



18600BUCMP

# 18600BUCMP

## Self-Contained Refrigerated Work Tables

Project \_\_\_\_\_  
 Item \_\_\_\_\_  
 Quantity \_\_\_\_\_  
 CSI Section 11400  
 Approved \_\_\_\_\_  
 Date \_\_\_\_\_

### Models

- 18648BUCMP 48" Worktop Refrigerator
- 18660BUCMP 60" Worktop Refrigerator
- 18672BUCMP 72" Worktop Refrigerator
- 18691BUCMP 91" Worktop Refrigerator
- 18699BUCMP 99" Worktop Refrigerator
- 186114BUCMP 114" Worktop Refrigerator



18648BUCMP

### Standard Features

- Stainless steel exterior is standard
- Compressor is located on right
- Finished stainless steel ends
- Stainless steel top
- Environmentally friendly R290 refrigerant
- Standard on casters
- High density foamed in place environmentally friendly, Kyoto Protocol Compliant, Non ODP (Ozone Depletion Potential), Non GWP (Global Warming Potential) polyurethane keeps energy costs low
- Electronic Control
- Three year parts and labor warranty and an additional two year compressor parts warranty

### Options & Accessories

- Stainless steel back
- Laminate facing (full front)
- Laminate end
- Laminate back
- Tray racks
- Cutting board (20" wide x .5" thick)
- 18" deep single tier stainless steel overshell
- Refrigerated drawers
- 4" casters
- 6" legs
- Lock
- Additional shelf (specify door size)
- Celsius readout for electronic control

### Specifications

**Exterior Top:** Constructed of heavy duty stainless steel, with integral 2.12" (5cm) high square nosing at the front. Top is insulated with high-density insulation. Exterior back and bottom are galvanized steel. Exterior ends are finished with stainless steel.

**Interior** base has stainless steel back and bottom. Interior ends and door frames are thermoformed ABS plastic. Base is insulated with high-density foamed-in-place environmentally friendly, Kyoto Protocol Compliant, Non ODP (Ozone Depletion Potential), Non GWP (Global Warming Potential) polyurethane. Each interior door section has (1) removable epoxy-coated wire shelf.

**Door(s)** have stainless steel exterior front, with a thermoformed ABS plastic interior liner. Black recessed handle(s) and a snap-in magnetic gasket which is readily replaceable.

**Base** has a machine compartment, standard on right, with a condensing unit with condensate evaporator and an electrical junction box installed. Machine

compartment has a removable louver for access to condensing unit. Blower coil(s) with expansion valve are located behind the door mullions.

**Refrigeration System:** R290 refrigerant, and maintains 36°F (2°C) to 40°F (4°C) interior cabinet temperature. Interior cabinet is cooled with mullion style blower coils (coated) with expansion valves mounted between each door/drawer section for even air and temperature control.

**Electronic** temperature controls and pre-wired condensing unit with hot gas condensate evaporator are installed in the machine compartment. Electronic control for base reads air temperature. On/Off switches for base are located behind the louvered panel.

**Electrical Connections:** 115 volts, 60 Hertz, single phase. Unit has a 8' (2.4m) long cord and plug.

**Casters:** Unit is mounted on 5" (13cm) diameter casters; overall height of casters is 6.13" (16cm).



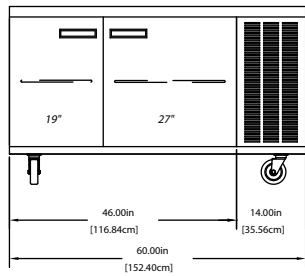
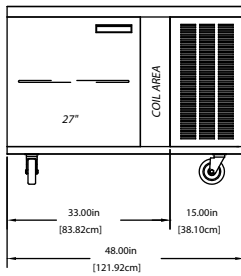
# 18600BUCMP



18648BUCMP



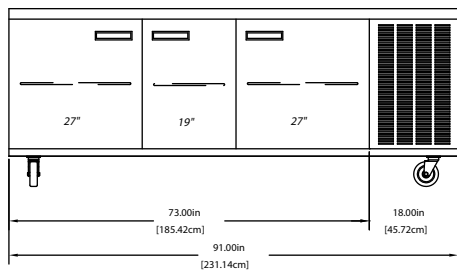
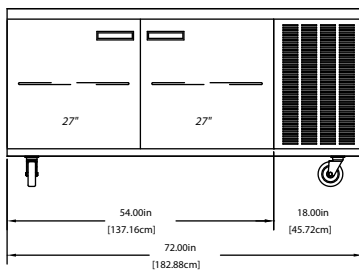
18660BUCMP



18672BUCMP



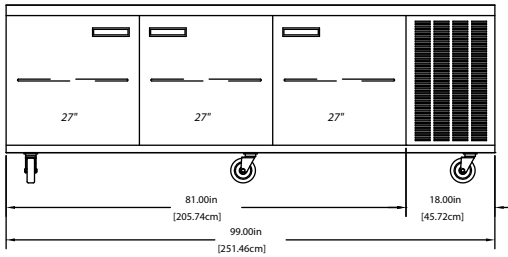
18691BUCMP



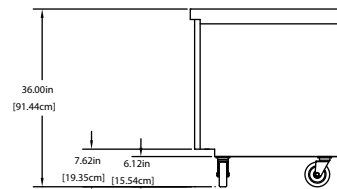
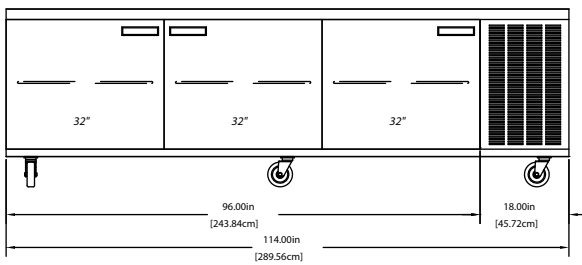
# 18600BUCMP



18699BUCMP

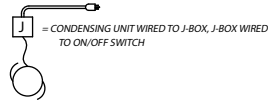
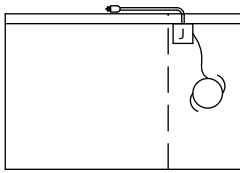


186114BUCMP

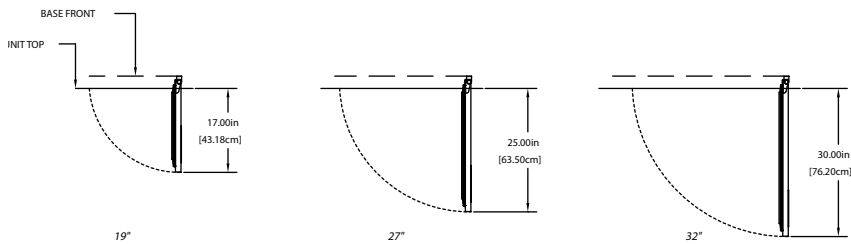


TYPICAL END

## Mechanical Data



## Door Swing



## 18600BUCMP

### Specifications

Model	Number of Doors	Shelf Area	Volume	BTU Load Base/Heat of Rejection	BTU Sys. Cap Base @ 100F	H.P.	V/Hz/Ph	Amps	Nema Plug	Ship Weight	Energy KWH/Day
18648BUCMP	(1) 27"	3.95	10.25	384	1550	0.20	115/60/1	2.9	5-15P	390lbs/177kg	1.07
18660BUCMP	(1) 19" & (1) 27"	6.51	15.1	456	1550	0.20	115/60/1	2.9	5-15P	435lbs/197kg	1.2
18672BUCMP	(2) 27"	7.9	18.04	501	1550	0.20	115/60/1	4.8	5-15P	495lbs/225kg	1.47
18691BUCMP	(2) 27" & (1) 19"	10.29	24.44	726	2440	0.25	115/60/1	4.8	5-15P	535lbs/243kg	2.01
18699BUCMP	(3) 27"	11.85	27.31	771	2440	0.25	115/60/1	4.8	5-15P	594lbs/269kg	2.1
186114BUCMP	(3) 32"	14.46	33	854	2936	0.33	115/60/1	6.3	5-15P	685lbs/310kg	2.68

18600BUCMP

Welbilt reserves the right to make changes to the design or specifications without prior notice.