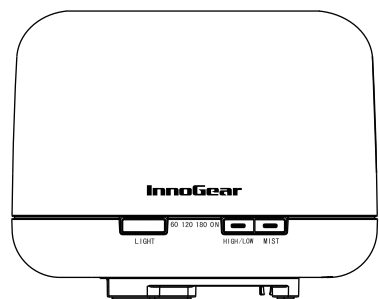


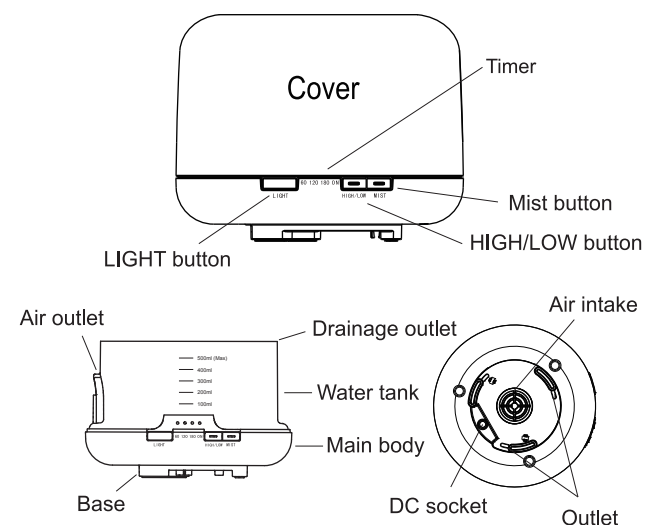
InnoGear

Aromatherapy Diffuser

User Manual



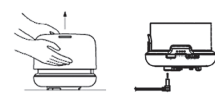
Aroma Diffuser



Aroma Diffuser

Operation

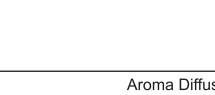
1. Please remove the upper cover.
(Fig. 1)



2. Please connect the AC adapter to the DC jack at the base of the main body.
(Fig. 2)



3. Add the right amount of water (no more than 500ml) and a few drops of essential oil into the water tank.
(Fig. 3)



Aroma Diffuser

Operation

4. MIST button (Fig. 4)

(1) First press -- 60 minutes timer mode begins and the LED indicator turns red.

(2) Second press -- 120 minutes timer mode begins.

(3) Third press -- 180 minutes timer mode begins.

(4) Fourth press -- Continuous mode "ON" begins.

(5) Fifth press -- turn off mist.

5. LIGHT button (Fig. 5)

(1) Press once to turn on the light and it will cycle through colors.

(2) Select the color by pressing additionally.

(3) Hold to turn off the light.

6. HIGH/LOW button (Fig. 6)

Select strong mist or low mist by pressing.

Aroma Diffuser

Troubleshooting

Cannot turn on	Is there enough water in the tank? --Please add enough water but do not exceed the MAX line. Is the AC adapter connected correctly? --Please unplug, check and re-plug correctly.
No mist or low mist	Not enough water or too much water? --Add the right amount of water but do not exceed the MAX line. Dust on the ultrasonic film? --Clean the product according to the instructions. Upper lid and inner cap installed improperly? --Align the inner cap nozzle with the mist outlet of lid when installing. Dust on the air intake? --If the air intake is dirty, mist will not come out. Just clean it.
Water leakage	Is there any crack at the bottom of the water tank? --Please check if there is any tiny crack at the bottom of diffuser through which water can leak. If you find a crack upon receipt of this product, please contact us for a free replacement. Is the steam water inside the lid wiped out? --Wipe out the steam water after each use, making sure the inner cap is completely dry before refilling in case steam water may leak out when putting the lid back on. Upper lid and inner cap installed improperly? --Align the inner cap nozzle with the mist outlet of lid when installing. Low temperature or high humidity? --In this case, mist may condense quickly into water drops.

Aroma Diffuser

FAQ

Q: Why can't I smell anything?

A: The strength of scent from different essential oils may vary. Choose a strong scented oil and don't put the diffuser near the air conditioner, fan or window.

Q: Can the lights be set for one specific color only?

A: Yes. Just press the LIGHT button.

Q: Can I turn off the diffuser by pressing the MIST button?

A: Yes. Hold the MIST button, and both the light and mist will turn off.

Q: Can I turn the lights off and just use the mist?

A: Yes. There are separate buttons for the light and the mist.

Aroma Diffuser

Precaution

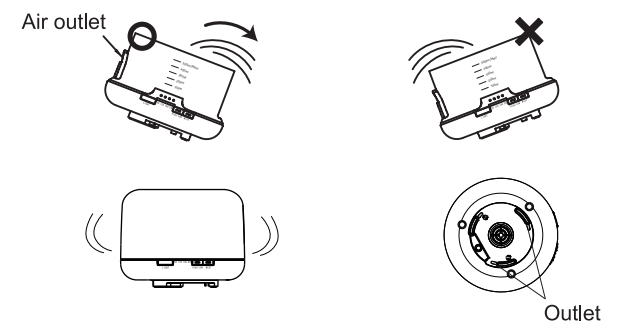
- To prolong the life span of the diffuser, do not use mineral water.
- Do not exceed the MAX line when filling water.
- If the diffuser runs out of water, it will shut off automatically.
- Please only use 100% essential oil with this diffuser. Low quality oil that contains chemicals, spices, or impurities may cause malfunction.
- Essential oils can stain. In the event of spillage, please wipe away with a soft cloth.
- Do not use for more than 10 hours at a time. Wait 60 minutes before restarting to avoid damage to ultrasonic plate.
- It's normal that the amount and intensity of the mist change during operation.
- There are many factors that may affect the mist including: water type, humidity, capacity, temperatur, and air currents.

Aroma Diffuser

Maintenance

Please clean the product as following after using 5-6 times (or 2-3 days):

- Turn off the power, unplug the power cord, and remove the upper lid.
- Pour out all the remaining water in the tank from the "DRAIN SIDE".
- Put a few drops of neutral kitchen detergent into warm water and clean the product with a soft rag.
- If the unit happens to be knocked over or tipped during operation, please shake the unit gently to drain the water inside the mechanism and put it in a well-ventilated place to dry naturally.



Aroma Diffuser

Specification

Dimensions	168 x 121mm
Weight	520g
Input Power	AC 100~240V 50/60Hz
Output Power	DC 24V 650mA
The Amount of Mist	45ml/h
Water Tank Capacity	500ml
Timer	1h / 2h / 3h / On
Control Mode	Mechanical
Power Consumption	About 13W
LED quantity	6 LEDs
Noise Level	< 35dBa
Main Material	PP+ABS
Ultrasonic Frequency	2.4MHz

Aroma Diffuser

After-sale Service

This product is guaranteed for 12 months from the date of purchase, please contact us if you need a replacement/refund.

Email: support@innogear.net

Phone: 800-806-3008

(Follow us on Facebook)



www.facebook.com/InnoGear.net

Aroma Diffuser