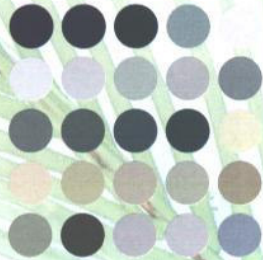




A - Basic

P4, P6, P10, P15, P16, P19, P21, P26, P31, P38, P41, P46, P50, P57, P64, P69, P70, P75, P79, P81, P89, P90, P92, P94, P102



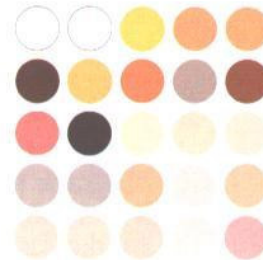
E - Warm/Cool Grays

P98, P99, P100, P180, P181, P182, P183, P184, P185, P186, P187, P188, P189, P190, P191, P192, P193, P194, P195, P196, P197, P198, P226, P227, P229



F - Pastel

P44, P74, P92, P101, P104, P110, P114, P115, P118, P120, P122, P126, P130, P135, P138, P146, P149, P156, P160, P161, P163, P177, P179, P206, P210



FLT25 - Portrait

P-0 (2 pieces), P50, P55, P56, P57, P62, P69, P70, P71, P74, P75, P137, P138, P139, P140, P142, P146, P147, P148, P149, (2 pieces), P152, P156, P160



J - Architectural

P11, P15, P18, P24, P26, P31, P34, P35, P44, P55, P62, P69, P74, P100, P117, P136, P137, P142, P178, P181, P183, P185, P187, P189, P209



K - Art Director

P7, P15, P16, P26, P31, P36, P41, P55, P56, P62, P69, P81, P98, P100, P102, P119, P137, P142, P149, P182, P184, P186, P188, P210, P220



L - Landscape

P191, P193, P195, P197, P100, P107, P106, P103, P118, P115, P16, P219, P122, P29, P126, P34, P31, P92, P81, P46, P74, P55, P50, P137, P147

Chartpak AD[®] Cubes



Each sturdy tabletop cube holds an assortment of 25 AD Markers specially selected to meet your design needs.

You'll also find 12-Sets, our extraordinary 100-Set to really expand your color range, and a convenient, fun Spin Tray assortment.

Chartpak Colorless Blender

Like our AD Markers, the Chartpak Blender is of highest U.S.-made quality and enduring usefulness to the artist. The Blender makes it possible to achieve smooth color gradations, transparent tones and an unlimited range of pastel shades.

For dazzling effects, blend color already applied to art surface, or use the Blender as you would a paint brush. For mixing, apply AD Marker colors to a nonabsorbent palette (mylar, glass, foil, ect.), pick up color with the Blender and apply it to art surface. A clean Blender can be used to pick up and remove unwanted color while still wet. Tip: Keep your Blender's Tri-Nib clean and spotless by wiping with a paper towel after use.

**Chartpak
Blender
P-0**

0270201