



## Introduction

The glass door fingerprint lock have been fully upgraded .

With simple and elegant design, the whole lock body is made of zinc alloy material.

The double hook bolt design and semiconductor fingerprint head makes the lock more safer. The dual motor protection mode of clutch + program makes the motor non-stuck.

Stylish appearance. The wide full-screen design, seamless touch screen display with personality, simplicity and three different colors make it refreshing.

Metal material, The front and back panel of the lock are made of zinc alloy, and the integrated panel is more durable.

Fingerprint recognition. The semiconductor fingerprint head recognition is not only sensitive and fast, but also can effectively prevent fingerprint copying, and with sensitive identification of wet and dry hands, elders and children.

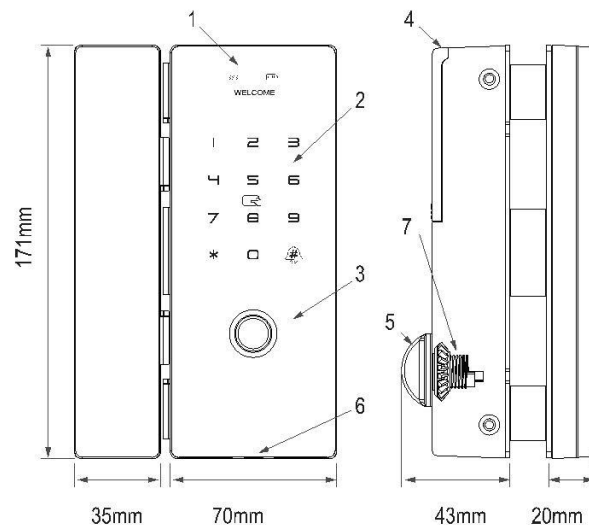
Double hook bolt .Unique design of double hook bolt can bear large resistance , and can be free of insert assembly.

Dual protection motor. With program + clutch design, the dual protection motor is with automatic control device,which effectively prevent motor from damage.And it makes the motor precise and powerful and work without sticking.

Unlocking mode. 6 unlocking designs - Fingerprint unlocking, password unlocking, magnetic card [ID card, bank card] unlocking, remote unlocking, Bluetooth unlocking,small program unlocking, wireless attendance.

## Panel schematic diagram

- 1 Display
- 2 password, IC card area
- 3 semiconductor fingerprint head
- 4 battery cover
- 5 switch knob
- 6 android interface of emergency power supply
- 7 patent clutch design



## Technical Parameters

Fingerprint speed:  $\leq 0.3S$

Working voltage: 4 5th 1.5V "AA" alkaline batteries

Misidentification rate:  $\leq 0.0001\%$

Frameless door seam: 3-16mm

Opening method: left and right interchange

Appearance material: zinc alloy

Fingerprint capacity: 200 pieces

Display: 0.96 inch

Static power consumption: less than 10ua

Identification rejection rate:  $\leq 0.0001\%$

The suitable door thickness: 8-12mm

Product color: pearl black, bright silver, rose gold

Fingerprint head: semiconductor biological recognition

Password + magnetic card + remote control: 1000 groups

Card type: M1, IC, second generation ID card

Emergency power supply: Android interface

Working temperature:  $-20^{\circ}C \sim +60^{\circ}C$

Product weight: 2.2kg

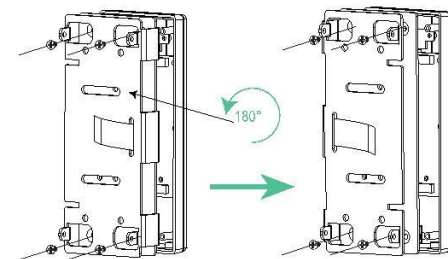
Applicable door: glass door, framed aluminum door, wooden door, sliding door

Unlocking method: fingerprint, password, magnetic card, remote control,

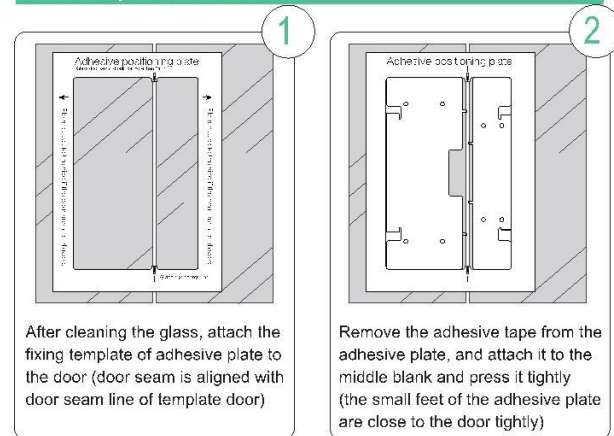
Bluetooth, small program unlocking, wireless attendance matching

## The reversing method of frameless glass door

Remove the 4 fixing screws on the front panel, rotate the U-shaped bracket by  $180^{\circ}$ , and then tighten the 4 screws.

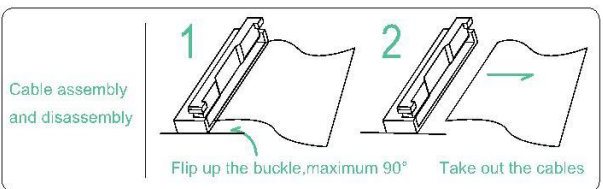
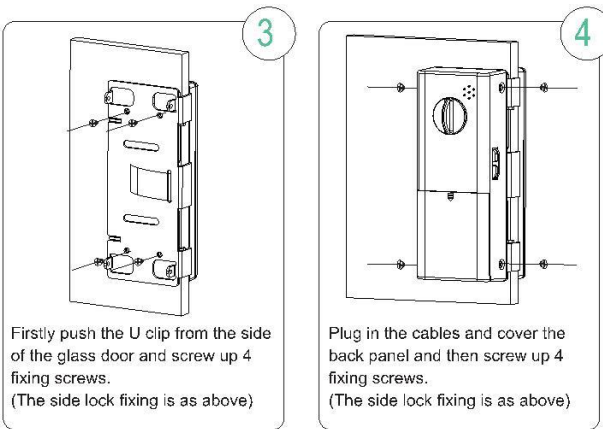


## Frameless glass door installation



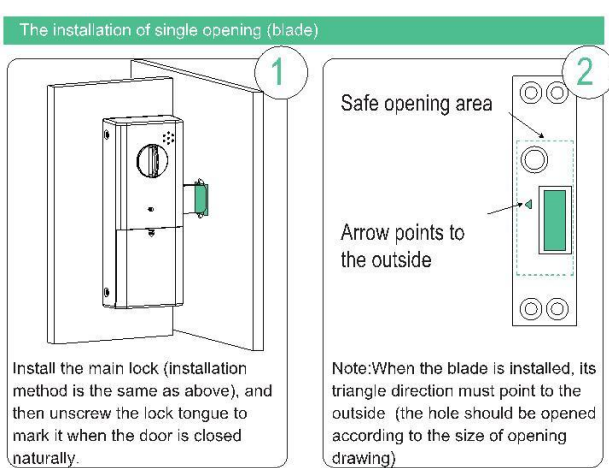
After cleaning the glass, attach the fixing template of adhesive plate to the door (door seam is aligned with door seam line of template door)

Remove the adhesive tape from the adhesive plate, and attach it to the middle blank and press it tightly (the small feet of the adhesive plate are close to the door tightly)

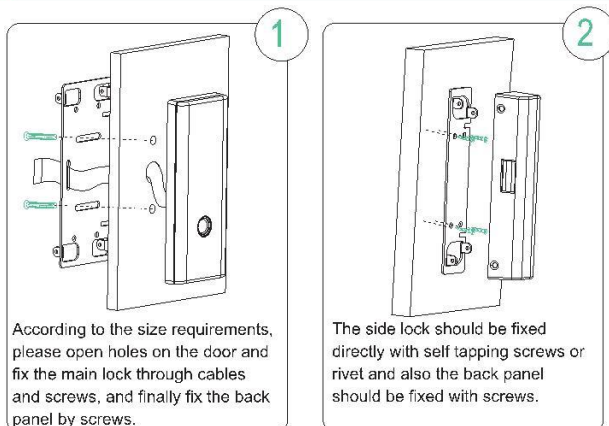


Note:

1. The template must be used for the position fixed plate. The door joint should not be less than or equal to 2 mm.
2. The thickness of the glass is 10-12 mm.



Installation of framed door with holes such as wooden doors and aluminum alloys doors.



Function setting description

Please touch to wake up the screen and then press #

