

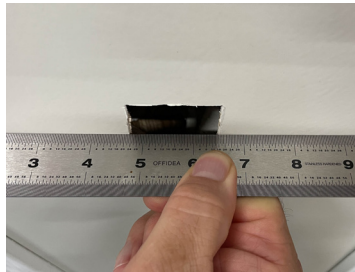
You will need:

- Pencil
- Scotch® or masking tape
- 3/16" drill bit
- Drill
- Hammer
- Phillips screw driver (**DO NOT USE** a powered screw driver)
- Small level
- Your tablet

CAUTION: Our frameless mount requires the installation of small metal discs to the back of your tablet. If you aren't ok with having discs on the back of your tablet **DO NOT PROCEED**.

1. Site survey

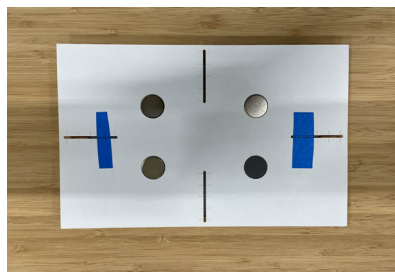
Identify a suitable location for installing your frameless mount. The location you select should be flat or nearly flat, and able to accommodate your power converter. Refer to the instruction sheet that came with your converter for additional installation information. If using the included wall anchors, please ensure nothing will be in the way when drilling anchor holes including studs, electrical wires, and plumbing.



Ensure that the frameless mount you received is for the size tablet you have. Our 7 inch frameless mount will work with tablets having a 7 inch screen. Our 8 inch frameless mount will work with tablets having an 8 inch screen. Similarly for tablets with 10, 11 and 12 inch screens.

2. Affix the metal discs to the tablet

Place your tablet, screen facing down, on a soft cloth or paper towel to protect it. Wipe the back of the tablet with the included alcohol pad to remove any dirt or grease that could prevent the disc from adhering well.



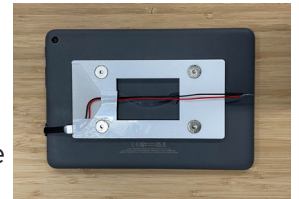
Place the disc template on the back of your tablet and use the left/right and top/bottom alignment windows

to ensure it is centered. Temporarily affix the template to the tablet by placing Scotch or masking tape across the alignment windows to hold it in place.

Remove the adhesive backing from the metal disc and apply it to the back of the tablet, centered in the associated template cutout. Repeat for the remaining 3 discs. Remove the template from the tablet.

3. Attach the slim charging cable to the mount

If you purchased a slim charging cable for your mount, with the tablet still laying screen down, place the tablet mount on the tablet aligning the mount magnets with the previously installed metal discs. The slim charging cable groove should be facing up and away from the tablet. Adjust the mount by moving it left/right and top/down so it is centered on the tablet.



Insert the slim ribbon cable connector into the tablet's charging port so that the slim charging cable wraps around to the back of the tablet where the mount is located.

Position the slim ribbon cable allowing for a small amount of slack near the cable's connector. This will make it easier to unplug the cable from the tablet for removal at a later time. Place a piece of the provided electrical tape where the slim ribbon cable first makes contact with the tablet mount.

Route the slim ribbon cable's red and black wires so that they are in the cable groove and are routed to the wire cutout. Place a piece of the electrical tape along the straight portion of the recess to hold in its place.

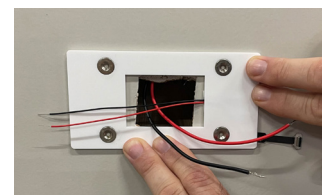
Unplug the slim charging cable from the tablet, remove the tablet mount from the tablet and set aside.

4. Install the power converter

If using an MB Mounts power converter, install it now following the instructions that came with it. Ensure the converter's 5v DC output wires are accessible at the location where you are installing the tablet mount.

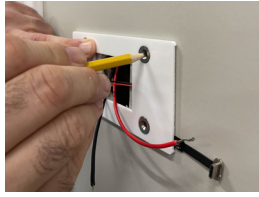
5. Attach the mount to the wall

With the slim charging cable groove facing the wall, locate the tablet mount such that the power converter 5v DC output wires and slim



charging cable wires meet at the wire cutout rectangle in the center of the mount.

If your wall isn't perfectly flat, you'll need to add washer shims behind one or more of the magnets. Try adding one or more of the optional shims to the appropriate tablet mount magnet back to ensure the mount will lay flat with all four of the shimmed mount magnets touching the wall without causing the tablet mount to bend or flex.



Adjust the mount until it is level, and using a pencil, mark the wall at each magnet center hole. Set the tablet mount aside.

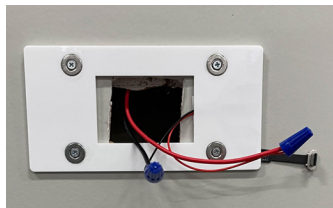
Using a 3/16 in. drill bit, drill holes at each of the marked magnet locations. Be careful to drill in the direct center of the marked location to ensure your hole lines up with the center of each magnet.

Insert the provided wall anchors and lightly tap with a hammer until they are seated in the holes and flush with the wall surface.

Place the tablet mount against the wall, lining up the center of each magnet with the center of each wall anchor. Insert screws into each magnet hole and tighten with a manual screw driver until just snug. **DO NOT** use a powered screw driver or **OVER TIGHTEN** the screws as this can cause the magnet to fracture.

6. Connect the converter and slim charging cable

With the converter's DC output wires and the slim charging cable's wires sticking out from the mount wire cutout, connect the red wires together and the black wires together, per the power converter instructions, using the wire nuts included with the converter. Once connected, tuck the wire nuts into the mount wire cutout so they don't interfere with the tablet.



7. Attach the tablet to the mount



Connect the slim ribbon cable connector to the tablet's charging port. Position the tablet with previously attached metal discs up against the wall mount aligning the discs with the mount magnets. The tablet should snap onto the mount. Adjust the side of the tablet up

or down to make level. Connect the slim charging cable to the tablet's charging port.

8. Removing the tablet from the mount

NOTE: our frameless mount is designed for infrequent removal of the tablet. Removing the tablet frequently can weaken the slim charging cable and result in degraded or non charging. Taking appropriate care will extend the life of your cable.

To remove the tablet from the wall mount, carefully disconnect the slim charging cable connector from the tablet's charging port. This can be accomplished using a fingernail or similarly thin object to pry it out of the port. Once disconnected, the tablet can be pulled away from the wall mount.

9. Removing the metal discs from the tablet

The adhesive on the metal disc is designed to hold the disc firmly to the tablet when pulled away from the magnet. Should you need to remove the metal discs, use a hair dryer to slowly warm up the disc and it's adhesive, being careful not to overheat the tablet, and while still warm, carefully pry up the disc using a thin flat tool such as a putty knife or metal spatula. Adhesive residue left behind can be removed using an adhesive remover such as Goo Gone. Please be sure to read and following the directions that came with your adhesive remover.

10. Interacting with your tablet

When pressing side buttons on your tablet it may be necessary to hold the tablet in place to avoid the tablet being pushed off of the mount.