

BEVERAGE CARTONS: USING A NATURAL RENEWABLE RESOURCE



ACE member companies are committed to sourcing their main raw material, wood fibre, from responsibly managed forests. This ensures the forests remain a renewable resource for generations to come.

WHAT ARE BEVERAGE CARTONS MADE FROM?

Beverage cartons, on average, are made from 75% paperboard, a renewable material if made from wood fibre sourced from responsibly managed forests. They also contain some low density polyethylene layers to prevent leakage (21%) and, in aseptic cartons, a very fine layer of aluminium as a barrier to light and oxygen (4%). All the materials are recyclable.

WHAT IS A RENEWABLE MATERIAL?

It's a material composed of biomass from a living source that is replenished at a rate equal or greater than the rate of depletion.

WHY ARE RENEWABLE RESOURCES IMPORTANT?

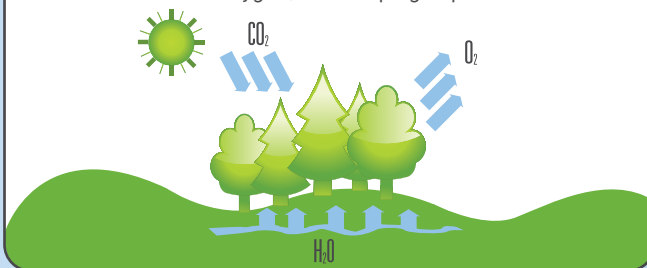
"If everyone in the world lived like an average European we would need three planets to live on."

Source: WWF, One Planet Living

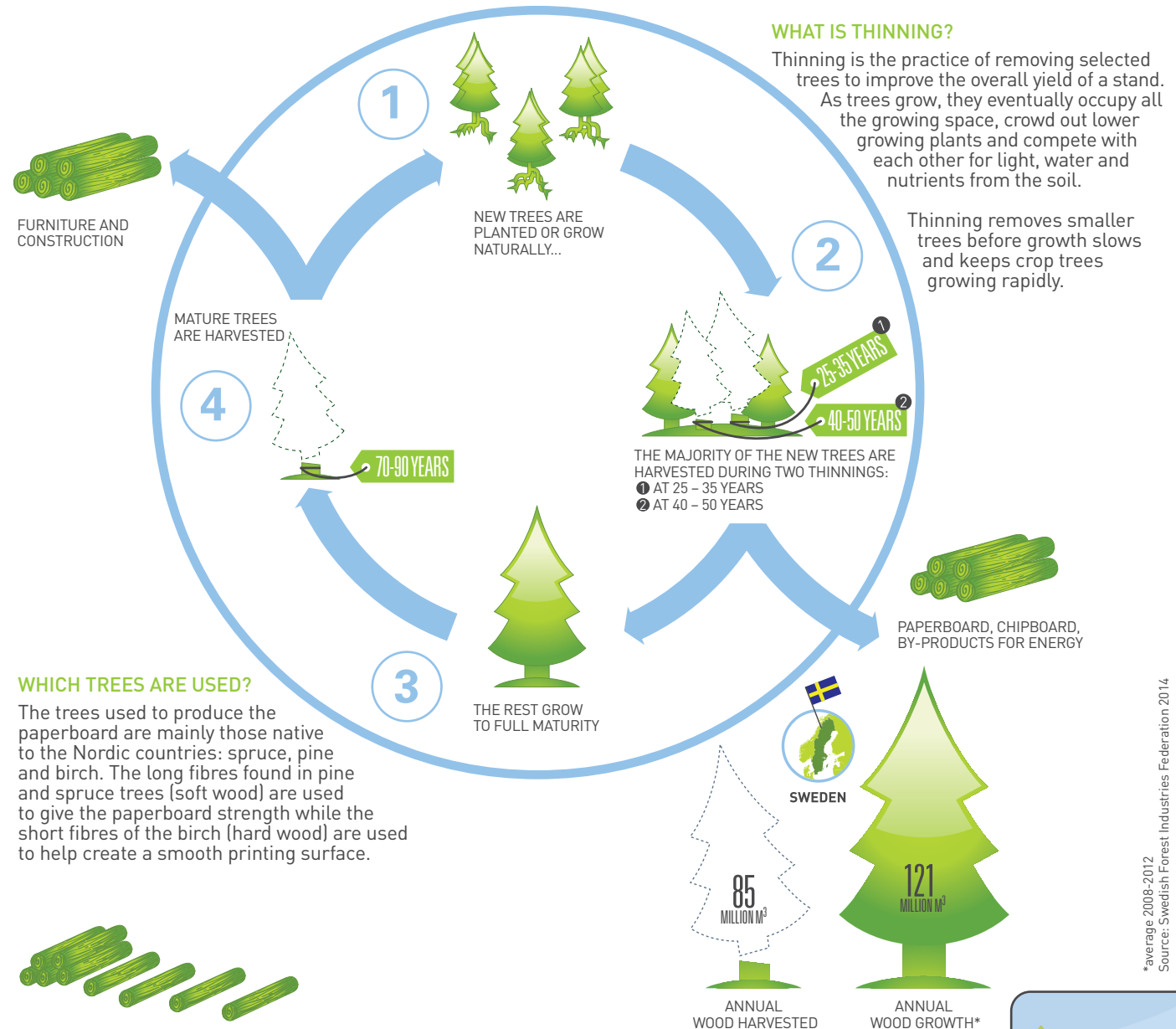
Sourcing responsibly managed renewable materials, such as wood fibre, can help to ensure that we have enough resources for today and tomorrow.

HOW ARE RENEWABLE RESOURCES USED IN BEVERAGE CARTONS?

The majority of wood fibre for European beverage cartons comes from Sweden and Finland, countries that have sound forest management practices where net wood volume is actually increasing year on year. This helps in the fight against climate change as growing forests are effective absorbers of CO₂. Through photosynthesis the trees absorb the carbon and release oxygen, also helping to produce clean air.



TYPICAL CYCLE SHOWING HOW NORDIC FORESTS ARE MANAGED RESPONSIBLY



*average 2008-2012
Source: Swedish Forest Industries Federation 2014



THE BASICS OF LIFE DEPEND ON BIODIVERSITY*

Biodiversity underpins every aspect of life: food, fuel, health, shelter and the inspiration to motivate ourselves each day.

Responsibly managed forests with certification schemes, such as FSC, contribute to biodiversity protection in Nordic forests. Respecting and upholding the ecosystem of the forest is critical both for the survival of the forest and the industry. To achieve this, foresters take a number of protective measures:

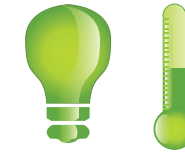
- 🌲 leave both living and dead trees
- 🌲 leave forest set-asides
- 🌲 maintain a mixture of tree species
- 🌲 plan logging routes in advance
- 🌲 fire management (where appropriate)
- 🌲 develop regeneration plans for renewing natural habitats once harvesting takes place
- 🌲 use biodegradable oils wherever possible in cutting and other machinery
- 🌲 no GMO use
- 🌲 leave buffer zones around water courses
- 🌲 use GPS to help manage planning and 'site-adapted forestry' techniques with far greater precision

The forest owners also ensure that the forests remain a source of pleasure and enjoyment for local communities.



NOTHING GOES TO WASTE

Although one tree* can produce over a thousand beverage cartons, this actually accounts for only a small percentage of the wood. Once a tree is harvested, every part of the log is used – even the sawdust.



BARK AND BY-PRODUCTS
FROM PAPER-MAKING
AND WOODWORKING
ARE USED AS FUEL FOR
BIO-ENERGY.



1 = 30 x 1l carton

SMALLER LOGS AND RESIDUES
FROM SAWN LARGER LOGS ARE
PULPED FOR PAPERBOARD,

1 TREE*
PROVIDES WOOD FIBRES
FOR AROUND
1500 BEVERAGE CARTONS

*average sized thinned tree



LARGER LOGS ARE USED
FOR
**FURNITURE,
CONSTRUCTION** ETC.

GUARANTEEING TRACEABILITY FROM FOREST TO CARTONS

Traceability is one of industry's most important strategic means to combat illegal logging and to avoid using unacceptable sources of wood. ACE members and their paperboard suppliers have put rigorous traceability systems in place so that they can trace their wood back to the forest area it came from.

These systems are independently verified and certified annually according to 'Chain of Custody' (CoC) standards set by the Forest Stewardship Council (FSC).

In addition, in 2007 Elopak, SIG Combibloc and Tetra Pak initiated a global voluntary sector commitment on wood traceability to have 100% chain-of-custody certification:

- 🌲 By 2015 for all liquid packaging board purchased worldwide for the manufacture of beverage cartons
- 🌲 By 2018 for all their own packaging material manufacturing plants worldwide

The commitment is subject to an annual review by ProForest, an independent verifier of forest supply chain practices. The latest review can be found on www.beveragecarton.eu

PAPER MILLS SOURCE FROM
INDEPENDENTLY CERTIFIED
FORESTS AND OTHER LEGAL AND
ACCEPTABLE SOURCES



TRACEABILITY AT PAPER
MILLS IS INDEPENDENTLY
VERIFIED ACCORDING TO CoC
STANDARDS SET BY FSC



BEVERAGE CARTON
MANUFACTURERS ARE COMMITTED
TO 100% CoC CERTIFICATION OF
THEIR PLANTS



CUSTOMER

CUSTOMERS HAVE CONFIDENCE
THAT ACE MEMBERS' CARTONS COME
FROM LEGAL AND ACCEPTABLE SOURCES



FOREST

PAPER MILL

CARTON MANUFACTURER

100% CoC NOW

100% CoC BY 2018

100% CoC BY 2015

100% CoC BY 2018