



Check out more of our products at mudbusters.com!

Upload your installed MudBusters & like us on Facebook!



fb.com/utvmudbusters

We may feature your ride on our website & social media!

Thank you for purchasing MudBusters® for your **2021+Yamaha RMAX4!** All MudBusters products are proudly made in the USA! Your product is manufactured from high-quality American made material! MudBusters manufactures the best-selling protection accessories that are designed to deflect debris and reduce the amount of mud that typically gets thrown from the tires into unwanted areas protecting you and your products.

Peace of Mind:

MudBusters offers you our "Peace of Mind" warranty which offers ever greater protection on your purchase. We do this not only because you are MudBusters family, but we also stand behind our product and services. MudBusters provides you peace of mind for the **LIFE** of the original product, original owner, and original UTV that item was purchased for. Should you damage/lose a MudBusters product on an adventure, contact us and we will replace it with the same or similar product free of charge. If you damage all your MudBusters product on an adventure, you likely have more damages to your vehicle than just our product, insurance coverage on your UTV could cover & replace your MudBusters product.

IMPORTANT:

Your MudBusters may get slightly distorted while in transit; apply pressure to the distorted areas to straighten/re-bend before installation. MudBusters are very durable and will not break from re-shaping!

Be cautious when drilling into factory panels of your vehicle. Be sure that you do not penetrate the surrounding parts or the chassis (unless instructed). You may find it useful to have a friend or a cold one to help you install your MudBusters.

MudBusters will withstand a lot of abuse, but they are not designed for crash protection, absorbing impacts, rollovers, or uprooting trees.

Unboxing:

MudBusters are formed to fit your machine but shipped in a narrow box. You may find it necessary to apply pressure and re-bend your MudBusters for a better fit. Again, do not worry, they are durable and will not break from re-shaping them!

For technical assistance or product inquiries, please call us at:

1-844-MUD-FLAPS or 844-683-3527

Hours: Mon-Fri 8-4 MST

You can also email us for [digital instructions](#) and product inquiries: Mudbusters@gracemfg.com

⚠ WARNING

This product can expose you to chemicals, including phthalates which are known to the State of California to cause cancer or birth defects or other reproductive harm. For more info, go to www.p65Warnings.ca.gov

Installation Instructions

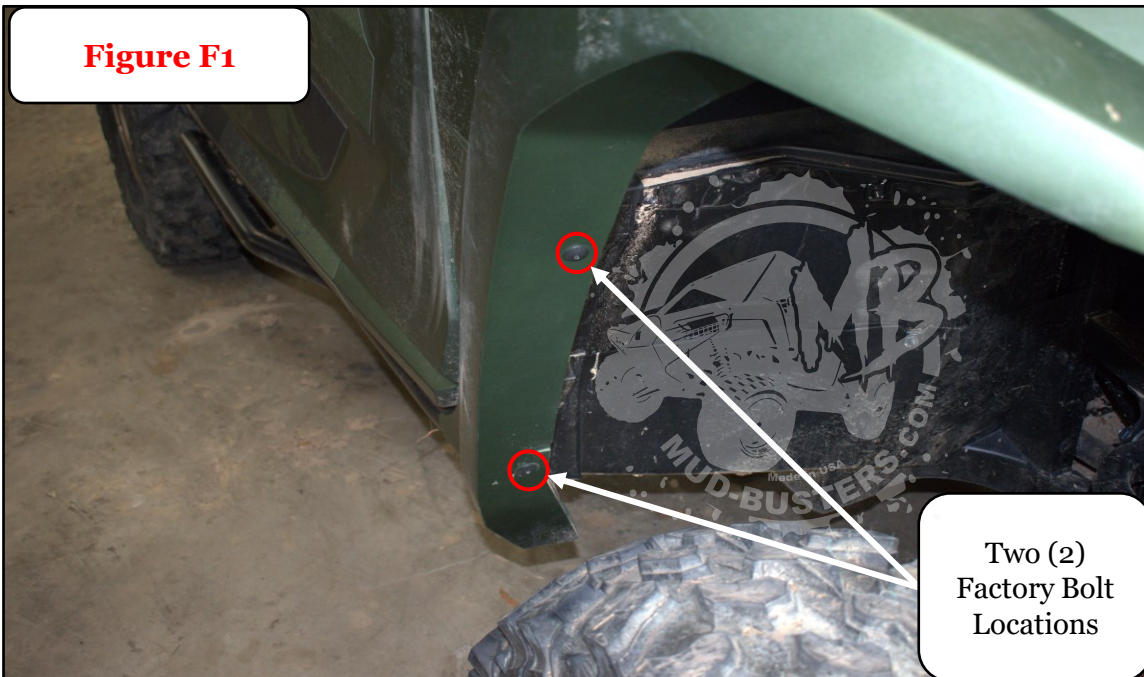
2021+ Yamaha RMAX4

Front Fender Flares

***** For better access to hardware, turn the steering wheel for better clearance. *****

- 1) Remove two (2) bolts (with a 5/32" allen wrench) from the back edge of the front fender, as shown in **Figure F1** circled in red.
- 2) Place the MudBusters fender flare against the factory fender and align the bolt holes. Insert the factory bolts, removed in step 1, through the MudBusters flare back in their original locations as shown in **Figure F2** circled in yellow and tighten.
- 3) Using a 21/64 drill bit, start at the bottom and work your way up and towards the front. Insert a rivet before moving to the next location. Check as you go that the front edge lines up with the factory fender, as shown in **Figure F2** circled in red.
- 4) Add one supplied tek-screw to fasten the front of your flare, as shown in **Figure F2** circled in blue.

Figure F1



Two (2)
Factory Bolt
Locations



MudBusters are hand-bent to mate up with the factory lines of your existing fender. They may get slightly distorted while in transit; apply pressure to the distorted areas to straighten/re-bend before installation. MudBusters are very durable and will not break from re-shaping!

Hardware Included

Front (Non-Mud-Lite)

(20) Rivets
(2) Tek-screws

Front Mud-Lite

(14) Rivets

Two (2) Factory Bolt
Reinstall Locations.

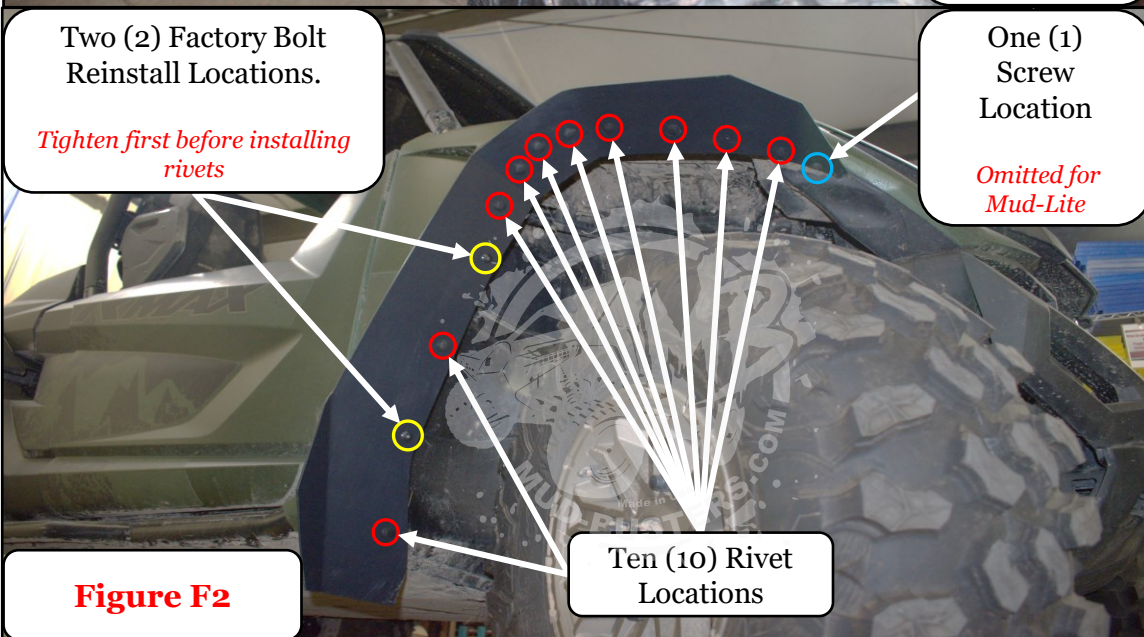
*Tighten first before installing
rivets*

One (1)
Screw
Location

*Omitted for
Mud-Lite*

Ten (10) Rivet
Locations

Figure F2

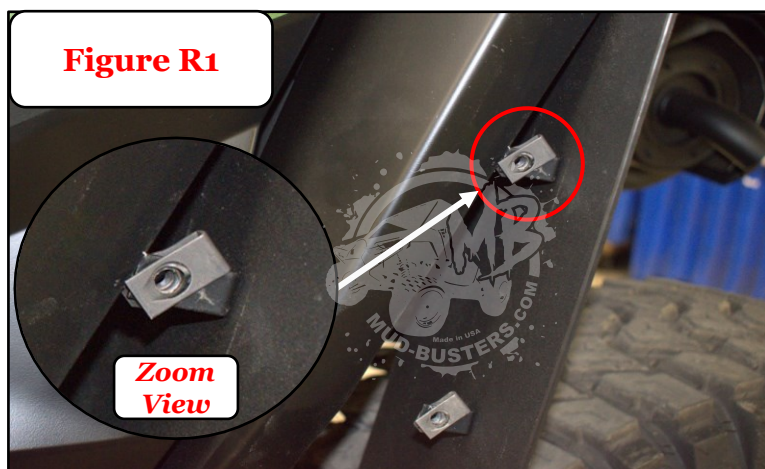


Installation Instructions

2021+ Yamaha RMAX4

Rear Fender Flares

- 1) Pre-assemble L bracket and U nuts as shown in **Image A** and install on your MudBusters flare as shown in **Figure R1**. Do not drill
- 2) Remove factory bolt as shown in **Figure R2** circled in red.
- 3) Place the MudBusters fender flare against the factory fender. Align the lowest MudBusters predrilled hole with the factory bolt location. Reinsert the factory bolt and tighten.
- 4) Push your MudBusters flare tight against the front of the wheel opening with brackets installed from step 1. From the backside of your flare, mark the locations of the centers of the u-nuts on the inside of the fender. Lower your MudBusters flare away from the fender, carefully drill a 1/4" hole in both locations marked, drilling from the inside of the wheel opening.
- 5) Place your MudBusters tight against the fender and insert a bolt in each of the locations you just drilled. Align MudBusters flare with the inner edge of the fender and tighten the bolts, as shown in **Figure R3**.

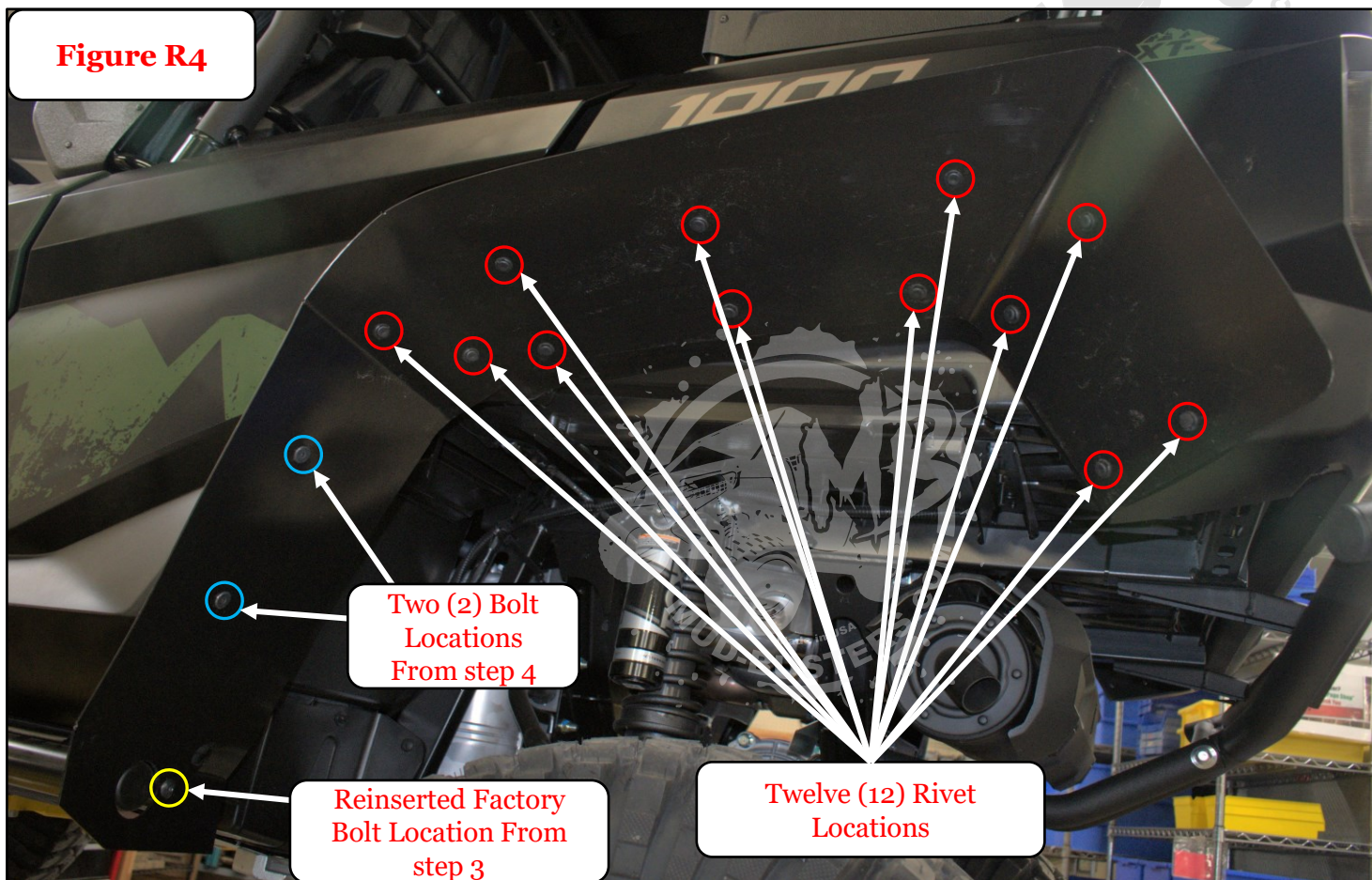


Installation Instructions

2021+ Yamaha RMAX4

Rear Fender Flares Continued

- 6) Using a 21/64 drill bit, drill the front rivet hole and insert a rivet. Make sure to align the MudBusters flare with the inside edge of the fender as you go and drill the remaining rivet holes one at a time and insert a rivet before moving to the next location, as shown in **Figure R4**.



Hardware Included

Rear Mud-Lite

(24) Rivets

Rear (Non-Mud-Lite)

(24) Rivets
(4) 1" L Brackets
(8) 1/4" U-Nuts
(8) 20mm Bolts

Installation Instructions

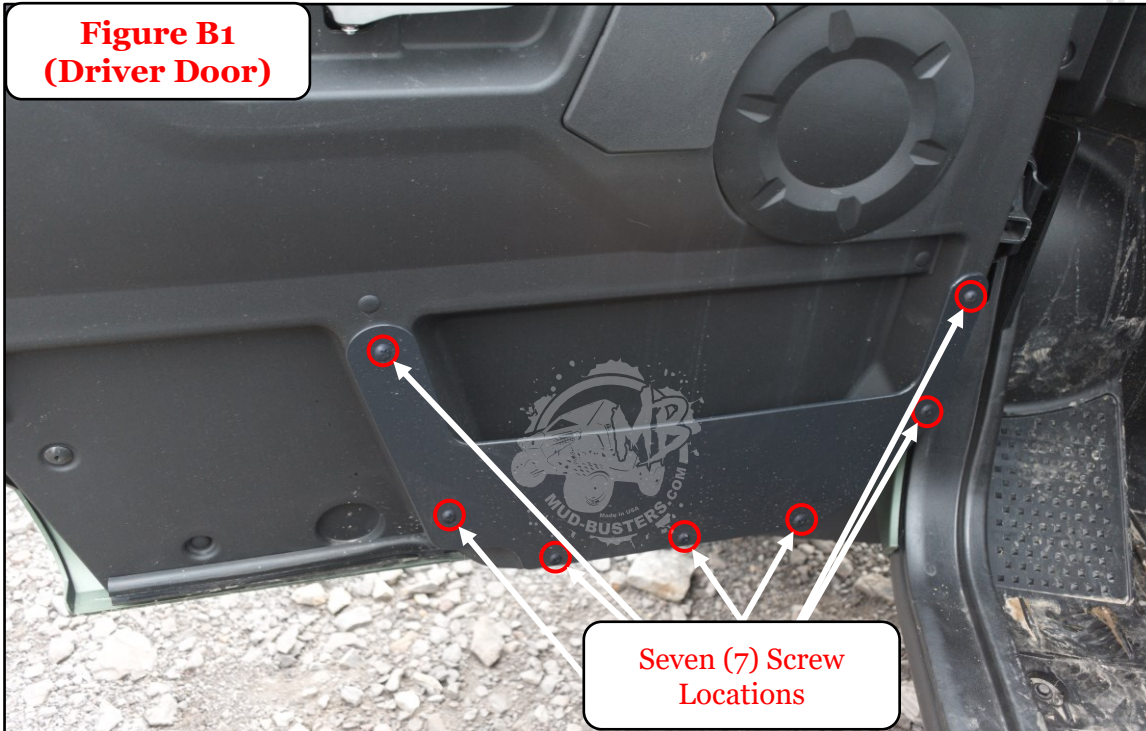
2021+ Yamaha RMAX4

Interior Door Pockets Front & Rear



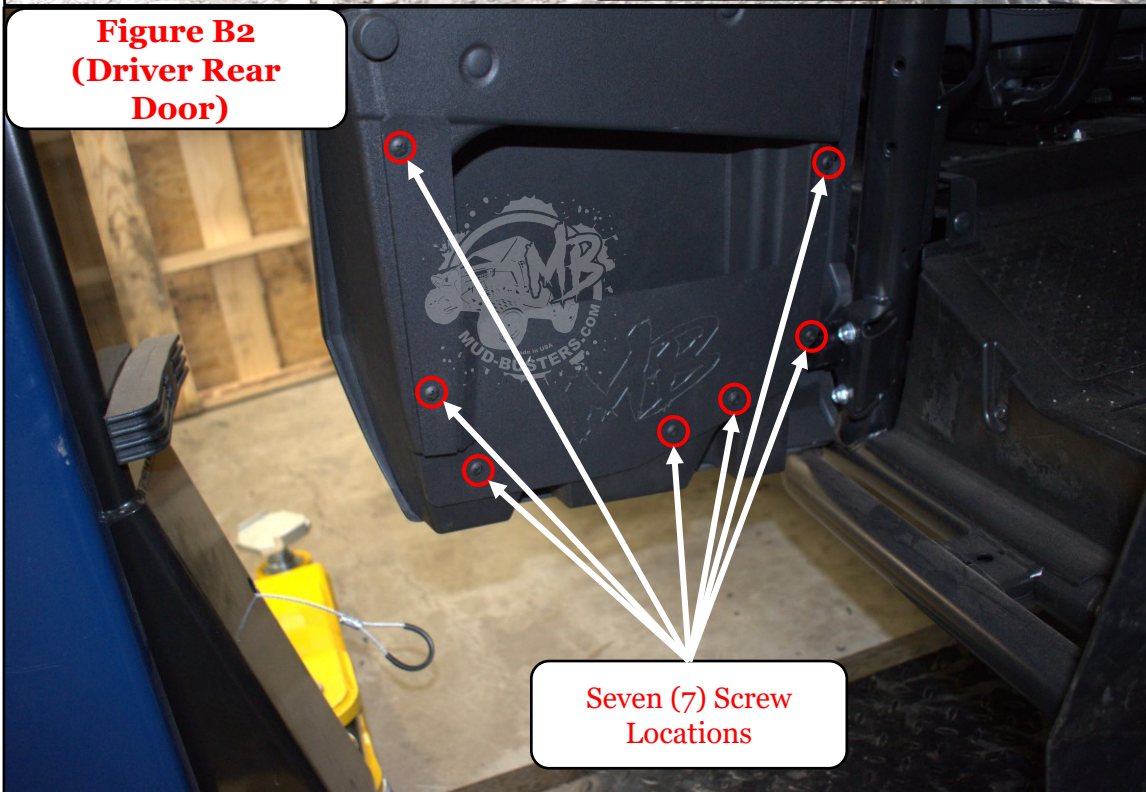
Place MudBusters Lower Door Pocket against the lower door, align the bolt holes and insert screws as shown in front door **Figure B1** & rear door **Figure B2** and tighten. Repeat on passenger sides

**Figure B1
(Driver Door)**



Seven (7) Screw Locations

**Figure B2
(Driver Rear Door)**



Seven (7) Screw Locations

Hardware Included

Front Door Pockets

(14) #10 x 3/4" Screws

Rear Door Pockets

(14) #10 x 3/4" Screws

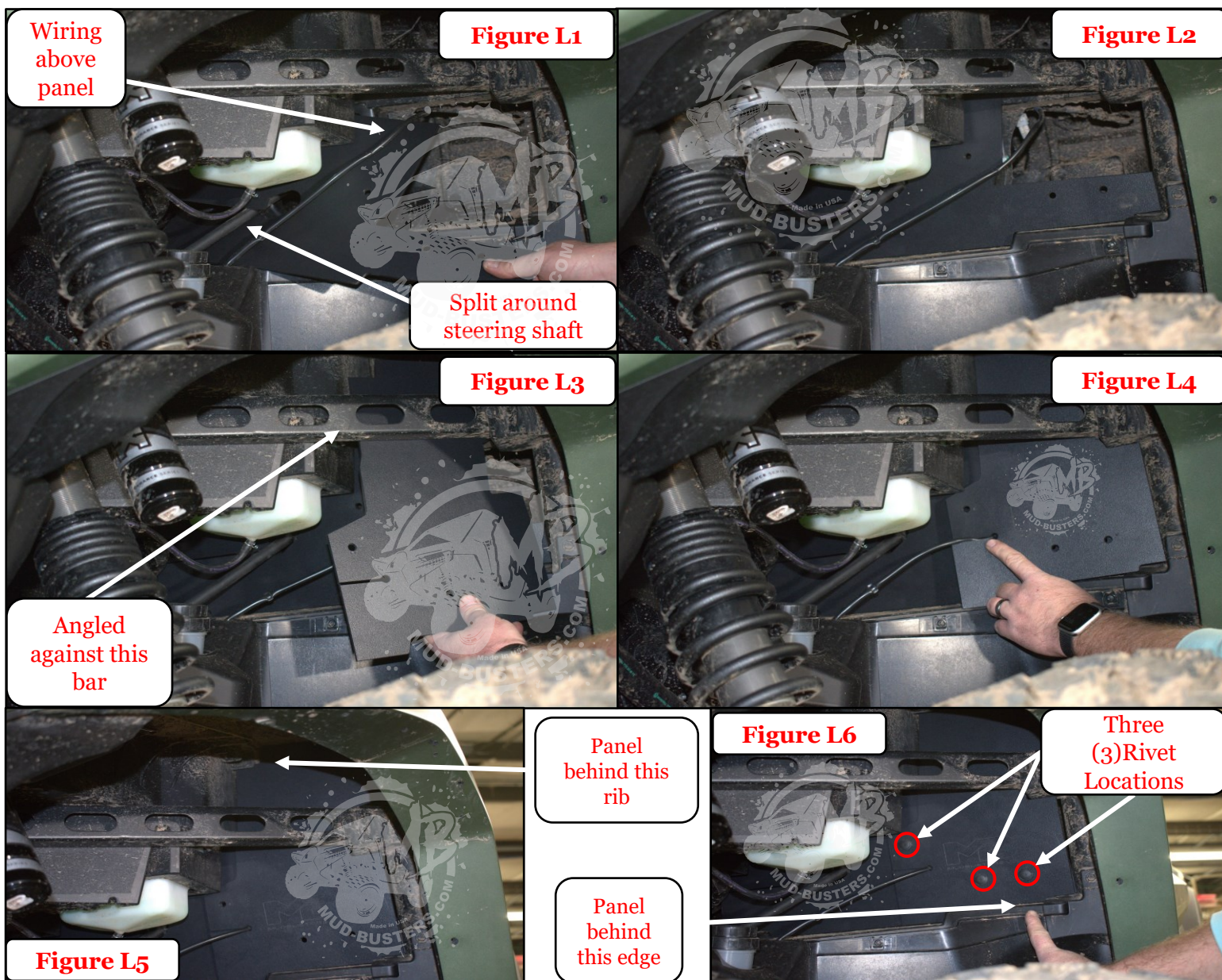
Installation Instructions

2021+ Yamaha RMAX4

Firewall Splash Shield Driver Side

***** Though not required for installation, it may be easier for visibility and access to raise the coolant reservoir from its recess from the top compartment. ***

1. Place left inner splash shield by splitting and installing around the steering shaft but underneath the wiring for the brake light switch as shown in **Figure L1**. Continue moving the piece inward until the steering shaft is in the opening and the wiring can rest in the corner cutout as shown in **Figure L2** (**The upper inside corner may need to be pushed towards the rear of your machine as you push the piece inward**).
1. The left outer splash shield will need to be placed in the opening at an angle and held against the crossbar as shown in **Figure L3**. Continue moving the piece upward until it can be rested on the ledge as shown in **Figure L4** then feed the wire through the slot and into the hole.
2. Be sure that the top corner is behind the rib as shown in **Figure L5** and the lower corner lands behind the edge shown in **Figure L6**. Install 3 rivets as shown in **Figure L6**.



Installation Instructions

2021+ Yamaha RMAX4

Firewall Splash Shield Passenger Side

*** This installation uses hardware in blind locations, you may not be able to see your fingers as you are installing, which may make it difficult. ***

1. Insert the panel behind the outer fender support, and in between the glove box and the box that hangs down as shown in **Figure R2**. Be sure to align the three holes with the bolt and the two plastic nipples on the backside of the glovebox panel.
2. Place a washer and locknut on the exposed end of the glovebox bolt and tighten. Be sure that the bolt doesn't back out as you are tightening the nut. This may require a friend to hold the bolt from the inside of the glovebox.
3. Insert the remaining piece as shown in figure R3. It will need to be inserted at this angle and rotated into place as you go. Be sure to tuck the corner shown behind the bar and bracket as shown in figure R4 for maximum clearance while installing. Ensure that the top of the shield goes behind the tab shown in figure R5 for best results.



Before installing your MudBusters firewall splash shield, open the glovebox and ensure that the bolt shown in **Figure R1** is tight, this bolt will be used to install the panel and a nut will need to be installed on the exposed portion of the bolt on the opposite side of the firewall.

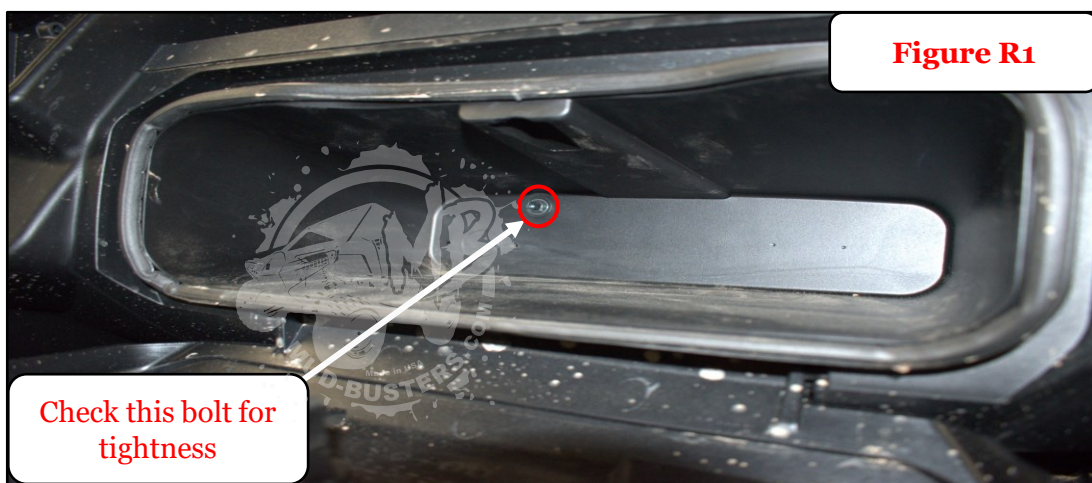


Figure R1

Check this bolt for tightness

Figure R2

Place panel behind this bar

Place panel behind this box

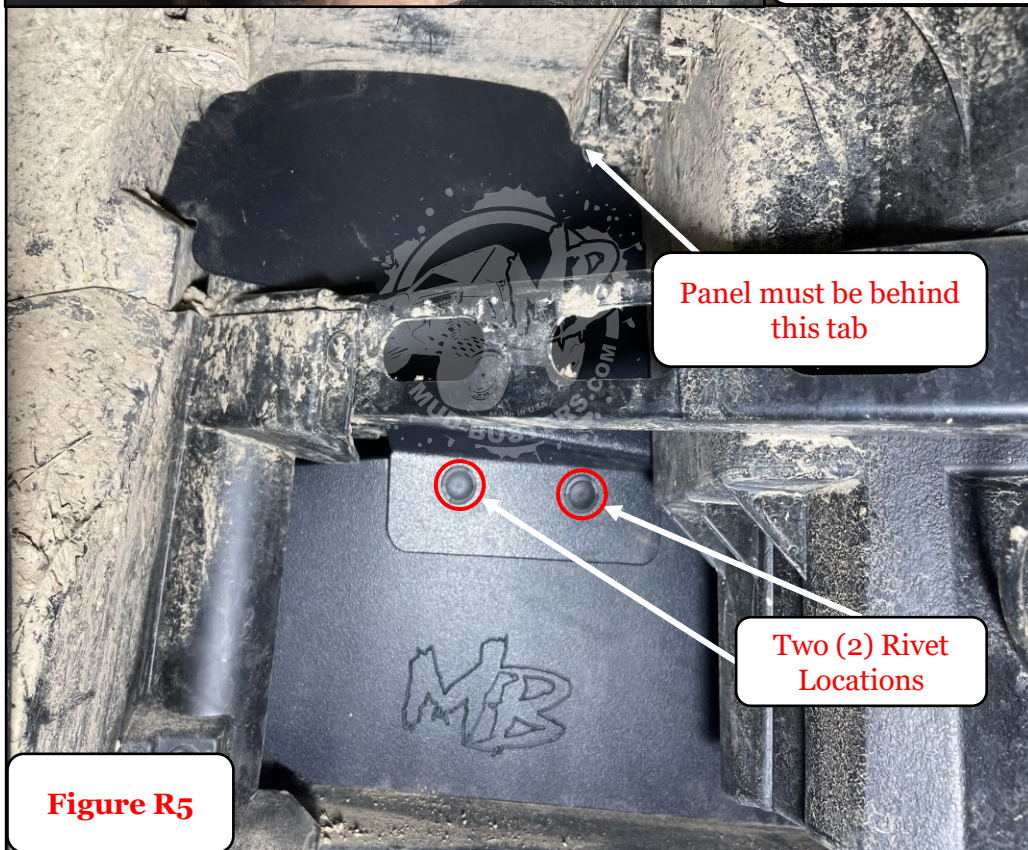
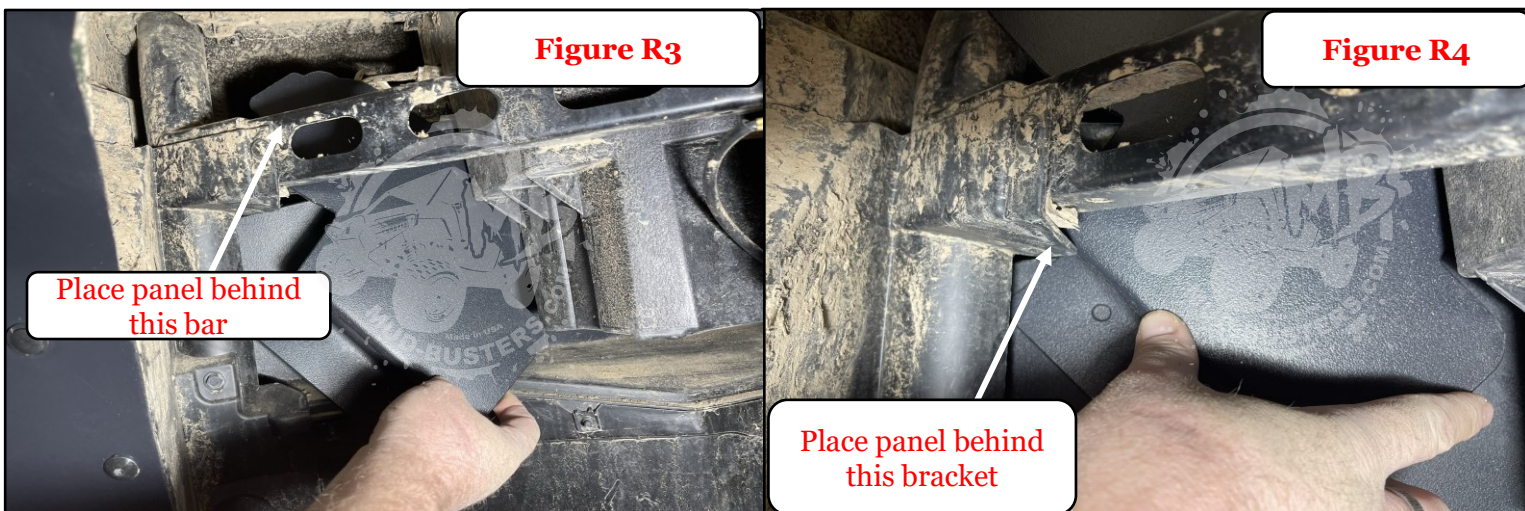
Glovebox bolt will go through this top hole

Installation Instructions

2021+ Yamaha RMAX4

Firewall Splash Shield Passenger Side Continued

1. Insert the remaining piece. It will need to be inserted at this angle and rotated into place as you go as shown in **Figure R3**.
2. Tuck the corner shown behind the bar and bracket as shown in **Figure R4** for maximum clearance while installing.
3. **Ensure that the top of the shield goes behind the tab shown in **Figure R5** for best results.**
4. Insert Rivets as shown in **Figure R5**.



- Hardware Included**
- (6) Plastic Rivets
 - (1) M6 Locknut
 - (1) 1/4" Fender Washer