



www.mud-busters.com

Email us for digital instructions: Mudbusters@gracemfg.com

Thank you for purchasing MudBuster's **fender flares for the 2009-2014 Polaris RZR S / RZR-4 800!** We manufacture the best-selling fender flare kits for UTVs and side by sides! All MudBusters products are made in the USA, and these fender flares are manufactured from high-quality American made material. Your new extended fenders are designed to deflect debris and reduce the amount of mud that typically gets thrown from the tires into unwanted areas. They can withstand a lot of abuse, but they are not designed for crash protection, absorbing impacts, rollovers, or uprooting trees. If you have an accident or if you happen to damage your fenders, order discounted replacement fenders by phone (for existing customers only). Unlike other manufacturers, you do not have to buy a complete set if you damage just one fender.

IMPORTANT:

Some of the images in the instructions below may differ from the actual product. In our continual effort to increase customer satisfaction, we may change the style, material, and/or hardware to serve you better. If your fenders get slightly distorted while in transit, apply pressure to the distorted areas to straighten them out before installation.

Use caution when drilling into the factory panels of your vehicle. Make sure that you do not penetrate the surrounding parts or the chassis (unless instructed). Self-tapping screws and push rivets are included as an effective and easy way to fasten the fender flares to your machine. However, you can use other methods of securing our extended fenders to your vehicle as well (i.e., rivets, misc. hardware, etc.). Remember, it may be helpful to have a friend assist you with the installation.

Unboxing:

Carefully open your package from the box's top (or bottom) by removing the staples with a flat-head screwdriver or pliers. Slide the fenders out of the box and make sure that any staples do not scratch your fenders. MudBusters are formed to fit your machine but shipped in a narrow box. You may find it necessary to apply pressure and re-bend some of your fenders for a better fit. Don't worry, they're very durable and will not break from re-shaping them!

Note: Using a larger drill bit may allow the fender to come off when riding! The rivets need to be a tight fit to secure the fender flare to the fender. We recommend a 21/64" drill bit.

Note: Max coverage set shown. Smaller sets (Mud-Lite, or Race-Lite) may have less hardware in the front of the front fender or the lower front of the rear fender than pictured. In these cases, it may be helpful to use the rear mounting locations first for installation ease.

Thank you for your business!

Please send us pictures and/or videos of your vehicle with MudBusters installed to our Facebook page

<https://www.facebook.com/UTVMudbusters/>

#utvmudbusters.com

or email us via mudbusters@gracemfg.com

We may feature your ride on our website, social media, Amazon and/or eBay!

For technical assistance or product inquiries, please call us at:

1-844-MUD-FLAPS or 844-683-3527

Hours: Mon-Fri 8-4 MST

▲ WARNING

This product can expose you to chemicals, including phthalates which are known to the State of California to cause cancer or birth defects or other reproductive harm. For more info, go to www.p65Warnings.ca.gov

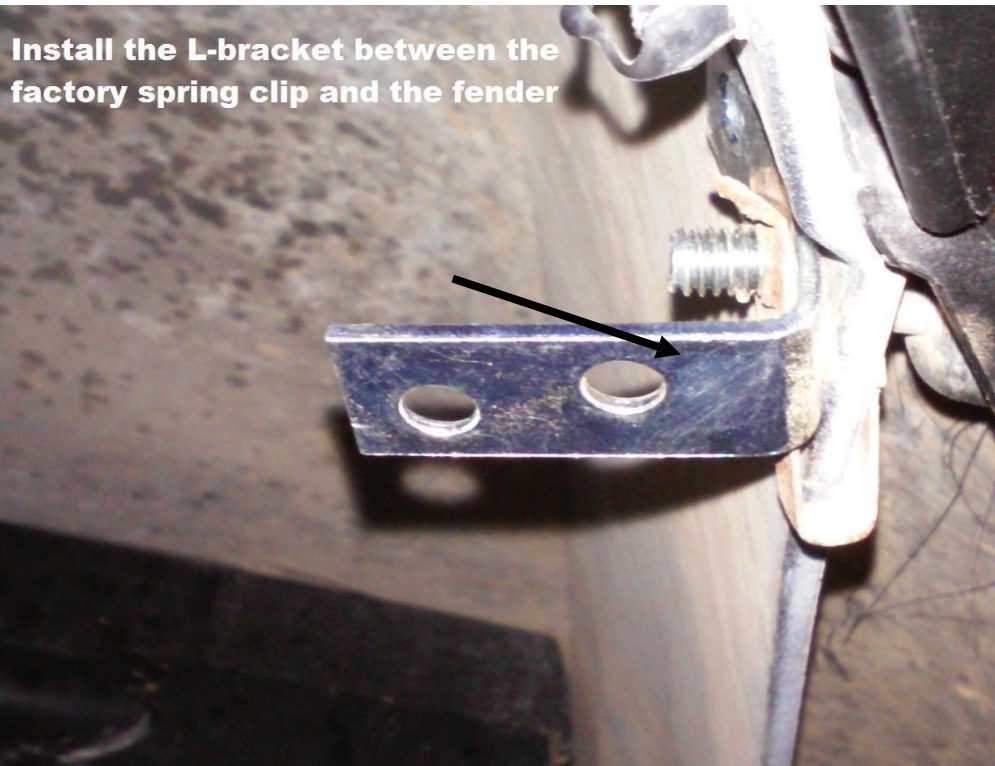
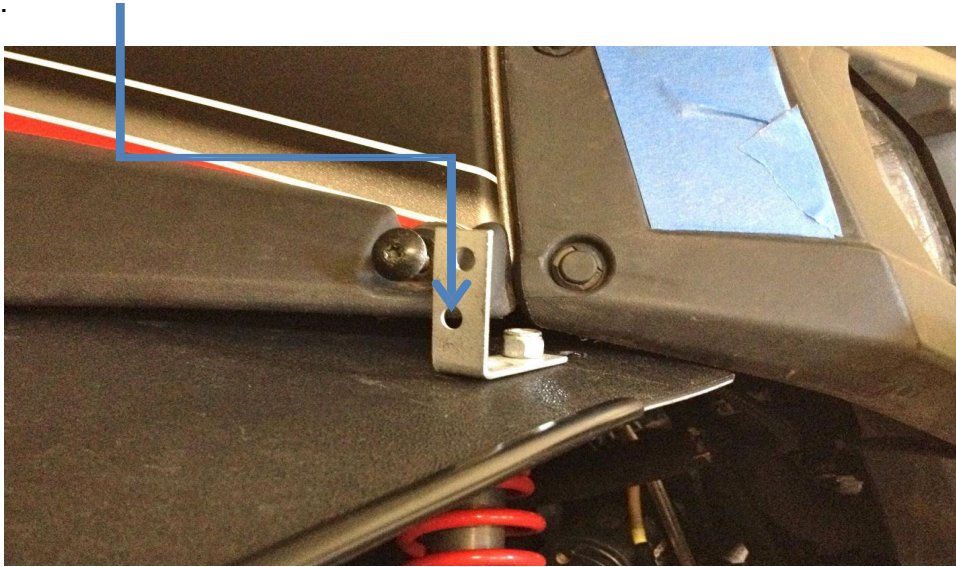
Installation Instructions

2009-2014 Polaris RZR S / RZR 4 800

Front Fender Flare Installation

On the top corner of the front fender flare, you will notice a 5/16" hole. This hole is to be used with the L bracket provided and the factory bolt shown in the picture below (just to the left of the L bracket). This picture is for illustration purposes only.

1) Install the L-bracket onto the factory bolt inside the wheel well through the bottom hole in the L-bracket and install a 1/4" lock nut to hold it in place. Now install a 3/4" bolt & a washer up through the new fender flare and install lock nut on top, but do not tighten it down completely yet. This will set the position of how far your new fender will extend.



Installation Instructions

2009-2014 Polaris RZR S / RZR 4 800

Front Fender Flare Installation

2. Remove the factory torx bolts located toward the bottom of the factory fender flare. The factory torx bolts can be re-used to fasten the fender flare or you can use the 1" bolts with washers provided in the hardware bag.
3. Next, push the new front fender flare bends into the inside of the stock fender angles. This is to reduce the gap as much as possible.
4. Align the holes in the fender flare with the factory holes located in toward the bottom of the fender.
5. Once the fender flare is in the desired position, re-use the factory torx bolts with a washer or use a new 1" bolt and a washer in the following locations.



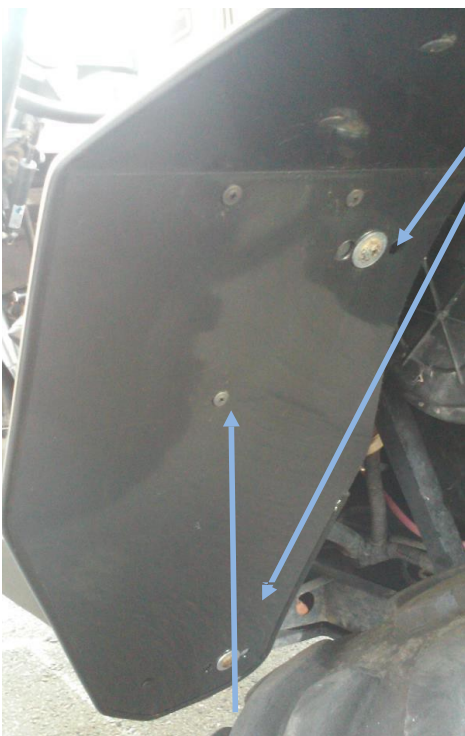
- 6) To secure the fender flare to the factory fender, install self-tapping

Installation Instructions

2009-2014 Polaris RZR S / RZR 4 800

Rear Fender Flare Installation

1. Remove the lower factory torx bolts.
2. Position the new fender flare to the back of the RZRS as shown below. Push the new flare angle up into the angle of the factory flare to reduce the gap as much as possible.
3. Re-use the factory torx bolts with a supplied washer, or use the 1" bolts with washers provided in the hardware bag, but do not tighten them down yet.
4. Once the fender is pushed into the factory bend, tighten down the two bolts in the lower portion of the fender.



5. Install self-tapping screws to reduce any gaps between the factory fender and the fender flare.



6. To secure the upper rear portion of the rear fender flares, install self-tapping screws through the underside of the fender flare and into the inner lip of the factory fender. The screws should not be visible from the outside of the vehicle as shown above.

Installation Instructions

2009-2014 Polaris RZR S / RZR 4 800

Hardware

Hardware Included

Included in Fender Flare Kit

- (2) Front Fender Flares
- (2) Rear Fender Flares
- (36) Tech screws to install New Fender Flares
 - (8) 1/4" x 1" Bolts
 - (4) 1/4" x 3/4" Bolts
 - (4) Lock Nuts
 - (10) Washers
 - (2) L Brackets

