



**www.mud-busters.com**

Email us for digital instructions: [Mudbusters@gracemfg.com](mailto:Mudbusters@gracemfg.com)

Thank you for purchasing MudBuster's **Fender Flares for the 2015+ Polaris RZR 900 Trail!** We manufacture the best-selling fender flare kits for UTVs and side by sides! All MudBusters products are made in the USA, and these fender flares are manufactured from high-quality American made material. Your new extended fenders are designed to deflect debris and reduce the amount of mud that typically gets thrown from the tires into unwanted areas. They can withstand a lot of abuse, but they are not designed for crash protection, absorbing impacts, rollovers, or uprooting trees. If you have an accident or if you happen to damage your fenders, order discounted replacement fenders by phone (for existing customers only). Unlike other manufacturers, you do not have to buy a complete set if you damage just one fender.

**IMPORTANT:**

Some of the images in the instructions below may differ from the actual product. In our continual effort to increase customer satisfaction, we may change the style, material, and/or hardware to serve you better. If your fenders get slightly distorted while in transit, apply pressure to the distorted areas to straighten them out before installation.

Use caution when drilling into the factory panels of your vehicle. Make sure that you do not penetrate the surrounding parts or the chassis (unless instructed). Self-tapping screws and push rivets are included as an effective and easy way to fasten the fender flares to your machine. However, you can use other methods of securing our extended fenders to your vehicle as well (i.e., rivets, misc. hardware, etc.). Remember, it may be helpful to have a friend assist you with the installation.

**Unboxing:**

Carefully open your package from the box's top (or bottom) by removing the staples with a flat-head screwdriver or pliers. Slide the fenders out of the box and make sure that any staples do not scratch your fenders. MudBusters are formed to fit your machine but shipped in a narrow box. You may find it necessary to apply pressure and re-bend some of your fenders for a better fit. Don't worry, they're very durable and will not break from re-shaping them!

**Note:** Using a larger drill bit may allow the fender to come off when riding! The rivets need to be a tight fit to secure the fender flare to the fender. We recommend a 21/64" drill bit.

**Note:** Max coverage set shown. Smaller sets (Mud-Lite, or Race-Lite) may have less hardware in the front of the front fender or the lower front of the rear fender than pictured. In these cases, it may be helpful to use the rear mounting locations first for installation ease.

**Thank you for your business!**

Please send us pictures and/or videos of your vehicle with MudBusters installed to our Facebook page

<https://www.facebook.com/UTVMudbusters/>

#utvmudbusters.com

or email us via [mudbusters@gracemfg.com](mailto:mudbusters@gracemfg.com)

We may feature your ride on our website, social media, Amazon and/or eBay!

For technical assistance or product inquiries, please call us at:

1-844-MUD-FLAPS or 844-683-3527

Hours: Mon-Fri 8-4 MST

**▲ WARNING**

This product can expose you to chemicals, including phthalates which are known to the State of California to cause cancer or birth defects or other reproductive harm. For more info, go to [www.p65Warnings.ca.gov](http://www.p65Warnings.ca.gov)

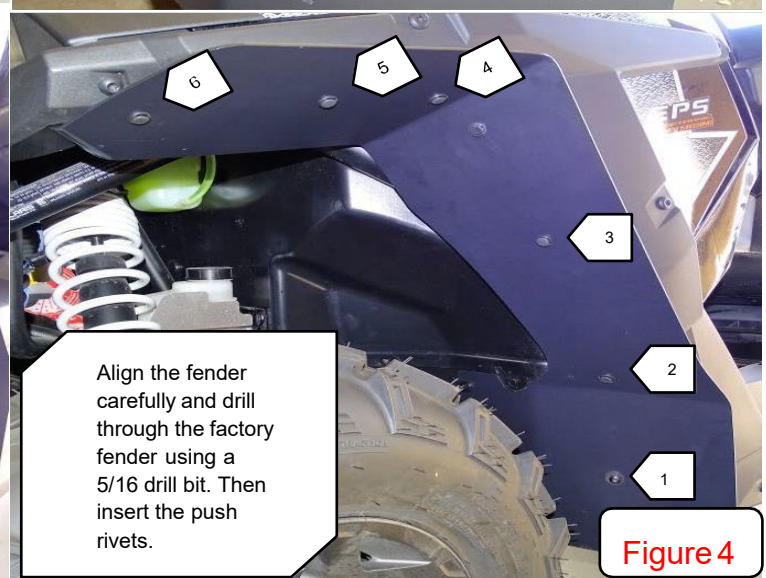
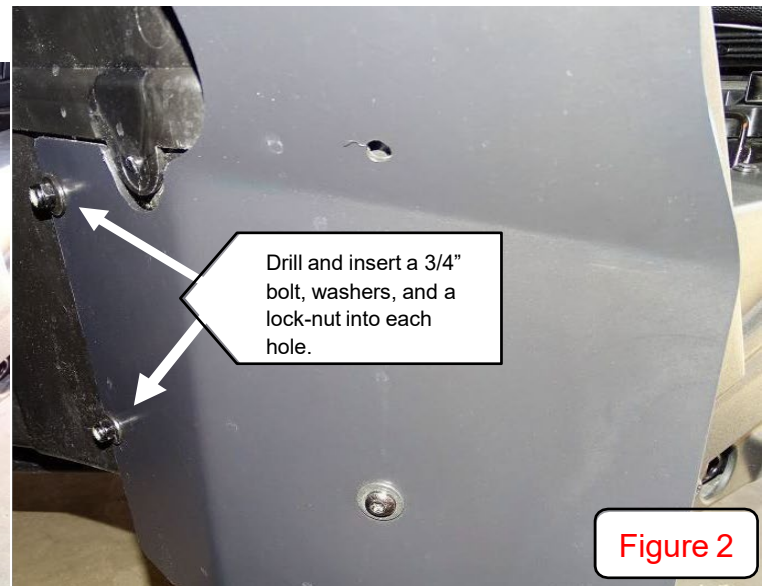
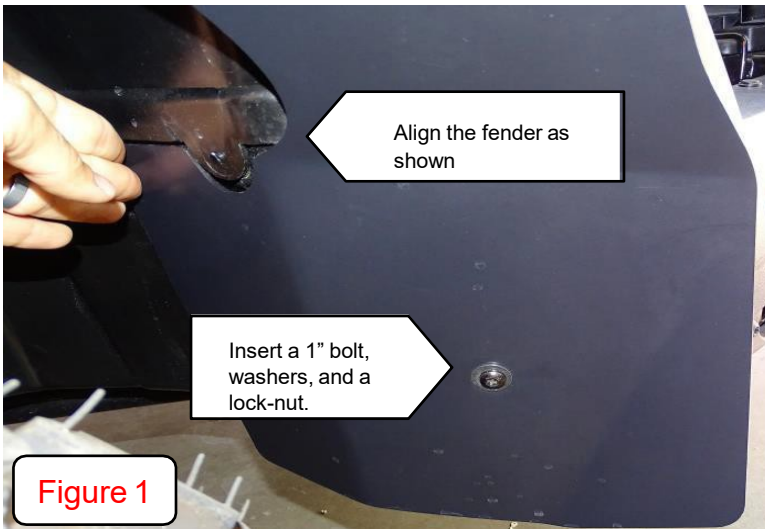
# Installation Instructions

## 2015+ Polaris RZR 900 Trail

### Front Fender Flare Installation



- 1) Place the fender flare against the inside of the factory front fender.
- 2) Insert (1) 1" bolt with a washer on both sides and a lock-nut on the inside of the fender, but do not tighten the bolt down yet. This will help you keep the fender into position (**Figure 1**).
- 3) Test fit the fender and drill the remaining lower fender holes as seen in **Figure 2** using a 5/16 drill bit. Insert (1) 3/4" bolt from the inside of the vehicle with a washer on both sides and a lock-nut. Do not tighten them yet.
- 4) Using clamps, test fit the fender flare by securing it to the factory fender before drilling. The top of the fender flare should seat against the upper bend in the top corner of the factory fender. If it does not, apply pressure to the fender flare and re-shape it to fit. The tip of the front fender flare will be tucked in as seen in **Figure 3**.
- 5) Starting at the bottom of the fender, carefully drill one hole at a time and insert a push rivet before proceeding to the next hole (**Figure 4**). The front tip of the fender flare will be tucked under the factory fender as shown.



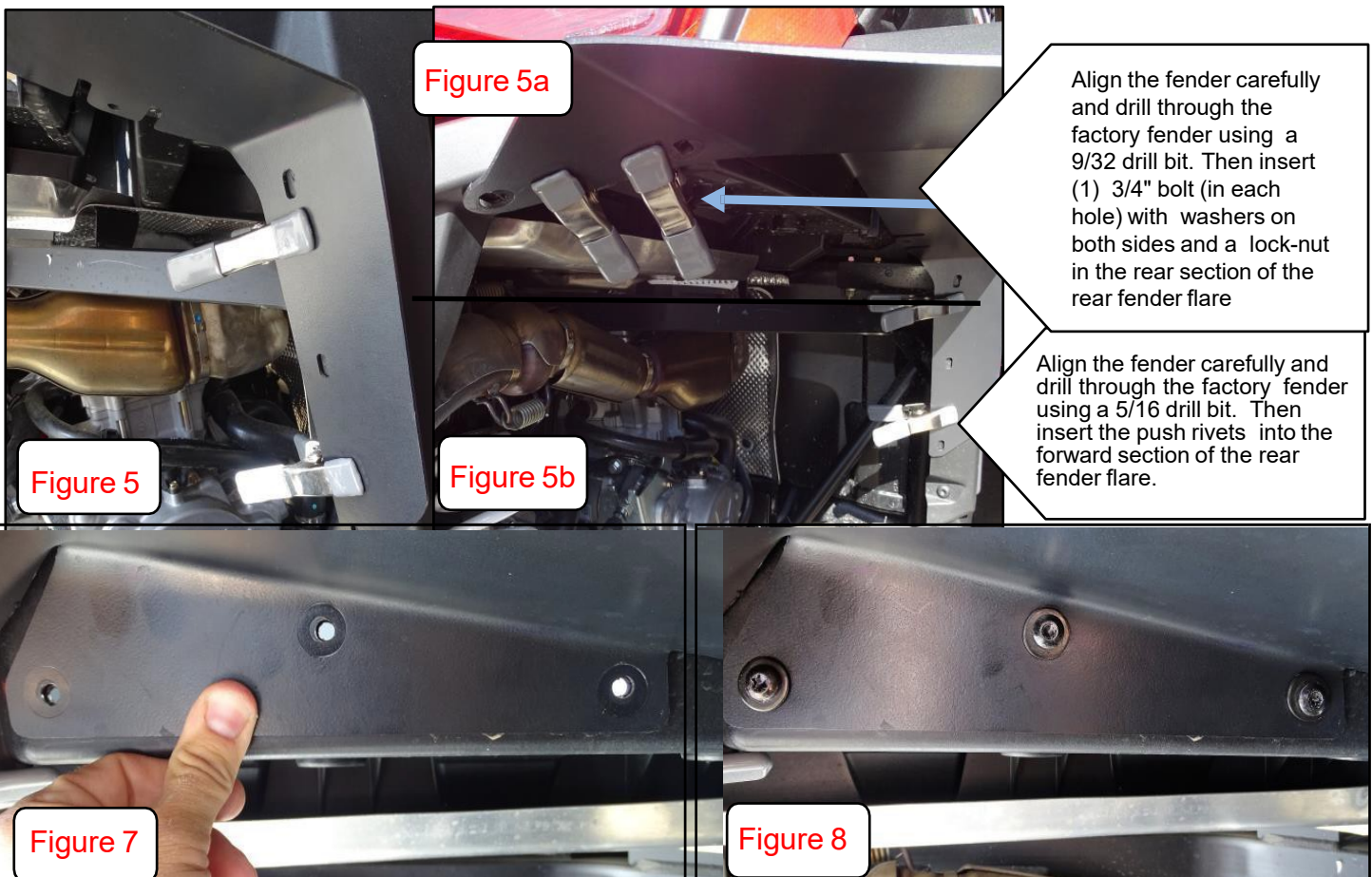
# Installation Instructions

## 2015+ Polaris RZR 900 Trail

### Rear Fender Flare Installation



- 1) Using clamps, test fit the rear fender flare by securing it to the factory fender before drilling. The bends in the fender flare should seat as close as possible against the bends in the corners of the factory fender. If they do not, apply pressure to the fender flare and re-shape it to fit.
- 2) Once fitted, see [Figure 5](#) & [Figure 5b](#). Drill the holes required to install the front section of the rear fender and insert 3 push rivets.
- 3) Align the fender and mark the 3 holes shown in [Figure 7](#) for drilling. Insert (1) 3/4" bolt (in each hole) with a washer on both sides and a lock-nut, but do not tighten down the hardware.
- 4) Proceed to [Figure 5a](#). Align the rearward section of the rear fender, drill, and insert (1) 3/4" bolt (in each hole) with a washer on both sides and a lock-nut, but do not tighten down the hardware.
- 5) Have a friend apply pressure to the fender flare so it is tight against the factory fender as you tighten all of the hardware down.
- 6) The rear fender is now installed. If you ride in extremely muddy terrain and find that the mud is pulling the middle of the fender down (causing a gap), you can use the additional mounting point detailed in [Figure 9](#).





# Installation Instructions

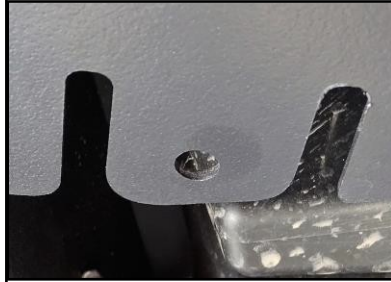
## 2015+ Polaris RZR 900 Trail

### Rear Fender Flare Installation



\*If you require an additional mounting point for your rear fenders, locate the tabs on the inner rear fenders. Bend the tabs up until they touch the inside of the factory fender. Mark the hole, drill, and insert (1) 3/4" bolt (from the outside of the factory fender) with a washer on both sides and a lock-nut on the inside.

\*We only recommend using this additional mounting point if you have a gap from the weight of mud pulling on the fender.



#### Hardware Included

##### Front Fenders

- (2) 1" bolts
- (4) 3/4" bolts
- (12) washers
- (6) lock-nuts
- (14) plastic rivets

##### Rear Fenders

- (12) 3/4" bolts
- (24) washers
- (12) lock-nuts
- (7) plastic rivets