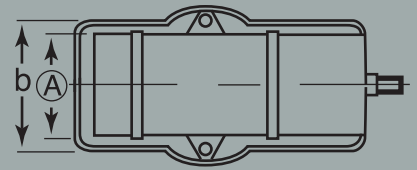
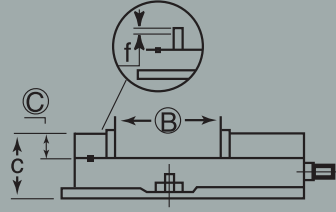




PRECISION MILLING MACHINE VISES

- Vises are Matched
- An integral key and large fasteners reduce deflection by 50%
- 4 jaw plate positions allow extra capacity with the jaw plates in the outside position
- The swivel base is graduated 360° in one degree increments
- Chip cover protects leadscrew from damage
- The quality movable jaw does not lift off the bed, and the deflection of the stationary jaw is minimized



Model	Jaw Width A	Jaw Open B	Jaw Height C	Bed Height	O.A.L.	b	c	f	Plain Ship Wt	Code No.	SALE \$
GS675	6	7.5	1.77	2.875	17.2	9.13	4.6	.39	80lbs	327-275M	395.00
GS890	6	8.9	1.5	2.875	17.2	8.3	4.6	.2	80lbs	327-290M	439.00
GS810	8	10.0	2.25	3.310	21.8	11.62	5.55	.43	158lbs	327-300	895.00



Capacity

	I	II	III	IV
GS 675	0-7-1/2"	2-1/8" - 10-1/4"	5" - 13-1/8"	7" - 15-7/8"
GS 890	0-8.89"	2.125" - 11.65"	5" - 14.44"	6.97" - 17.24"
GS 810	0-10.43"	2.36" - 3.66"	6.25" - 16.61"	8.58" - 20.79"

*Warranty is against manufacturing defects only

Driven tools for CNC turning centers allow milling, drilling and tapping operations on the lathes without additional parts handling. Also in this case GS can supply a wide range of types in order to equip the CNC lathes and turrets of the most popular builders on the market with an unbeatable price/quality ratio.

Main technical features

- Main body designed to maximize rigidity and reduce vibration
- Specially treated corrosion resistant steel body
- Angular contact bearings + taper roller bearings on output spindle for better rigidity and longer life
- Gleason spiral bevel gears with completely ground involute form

- Rated to 70Nm torque and 6000 rpm
- Internal coolant option - up to 100bar
- Designed, manufactured and assembled in Italy
- 2 Year guarantee

- ▼ Direction of rotation is opposite to the machine spindle
- ▲ Direction of rotation is the same as the machine spindle

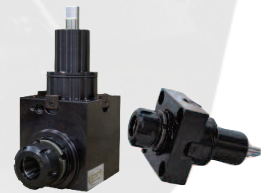
Driven Tools For DMG MORI Lathes

Model	Orient	Rotation	Output	Int. Coolant	Nm	RPM	Gage Length (mm)	Code No.	SALE \$
99.MS.A59	AX	▲	ER-32	-	60	10,000	Max 89.9	381-504	1,709.44
99.MS.A60	AX	▲	ER-32	• 80bar	60	10,000	Max 89.9	381-505	2,529.26
99.MS.A72	RD	▼	ER-32	-	60	10,000	90	381-506	3,662.99
99.MS.A73	RD	▼	ER-32	• 80bar	60	10,000	90	381-507	4,099.04



Driven Tools For DOOSAN Lathes

Model	Orient	Rotation	Output	Int. Coolant	Nm	RPM	Gage Length (mm)	Code No.	SALE \$
99.DS.A01	AX	▲	ER-25	-	40	8,000	57.2	381-512	1,482.66
99.DS.A02	AX	▲	ER-25	• 80bar	40	8,000	57.2	381-513	1,700.68
99.DS.A11	RD	▼	ER-25	-	40	8,000	70	381-514	2,790.89
99.DS.A12	RD	▼	ER-25	• 80bar	40	8,000	70	381-515	3,296.73
99.DS.A41	AX	▲	ER-32	-	70	6,000	72.5	381-516	1,744.29
99.DS.A42	AX	▲	ER-32	• 70bar	70	6,000	72.5	381-517	2,005.92
99.DS.A51	RD	▼	ER-32	-	70	6,000	72	381-518	2,930.38
99.DS.A52	RD	▼	ER-32	• 70bar	70	6,000	72	381-519	3,471.15



ASK ABOUT OUR PRICE MATCH GUARANTEE

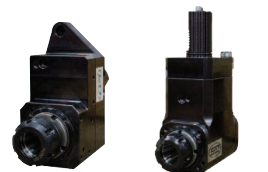
Driven Tools For HAAS Lathes

Model	Orient	Rotation	Output	Int. Coolant	Nm	RPM	Gage Length (mm)	Code No.	SALE \$
99.HA.590082	AX	▲	ER-32	-	63	6,000	82.1	381-500	1,290.81
99.HA.590082B	AX	▲	ER-32	• 25bar	63	6,000	82.1	381-501	1,613.47
99.HA.590084	RD	▼	ER-32	-	63	6,000	Max. 75	381-502	2,424.63
99.HA.590084B	RD	▼	ER-32	• 25bar	63	6,000	Max. 75	381-503	3,067.06



Driven Tools For MAZAK Lathes

Model	Orient	Rotation	Output	Int. Coolant	Nm	RPM	Gage Length (mm)	Code No.	SALE \$
99.MZ.A58	Off-AX	▲	ER-32	-	80	6,000	50	381-508	2,267.55
99.MZ.A59	Off-AX	▲	ER-32	• 80bar	80	6,000	116	381-509	3,488.57
99.MZ.A65	RD	▼	ER-32	-	80	6,000	130	381-510	2,423.10
99.MZ.A66	RD	▼	ER-32	• 80bar	80	6,000	130	381-511	3,197.87



WE INVITE INQUIRIES FOR OKUMA, NAKAMURA, MIYANO, BIGLIA



Download the brochure

PRECISION TOOLS

Asimeto Indicator/Mag Base Kit

ASIMETO



Description	Code No.	SALE \$
Includes 1 each of the following:	500-730	109.97
• 7602031 (Type III triple jointed magnetic base)		
• 7402261 (0-1" .001" AGD2 dial indicator)		

AGD2 Dial Indicators



- Reverse counter
- Stainless steel components
- Rotating bezel with clamp
- Lugback (1/4" hole)
- Interchangeable point
- Conforms to AGD 2 standards



Travel Range (in.)	Dial Reading (in.)	Grad. (in.)	Dial Colour	Code No.	SALE \$
1/4	0-100	.001	White	200-745	14.77
1/2	0-100	.001	White	200-718	14.77
1	0-100	.001	White	200-720	14.77
1	0-50	.0005	White	200-755	17.01
2	0-100	.001	White	200-725	33.53
1	0-100	.001	White	200-010*	17.71

Magnetic Back
For AGD2 series

200-722 **8.96**

Bezel & Crystal Assembly
For 200-720

200-721 **2.87**

* Teclock Style

Digital Indicator With Analog Display

ASIMETO

- Tolerance measurement feature
- Inch/Metric conversion
- SR44 battery
- Flat back (attached) and lug back supplied



Range	Resolution	Accuracy	Code No.	SALE \$
0-1"/0-25mm	.00005"/0.002mm	±.0006"/±0.015mm	7406011	153.37

Asimeto Precision Tools Kit

ASIMETO



Description	Code No.	SALE \$
Includes 1 each of the following:	500-128	387.24
• 7101637 (0-3" .0001" outside micrometer set)		
• 7307065 (6" digital caliper)		
• 7402261 (0-1" dial indicator .001")		
• 7601011 (magnetic base)		
• 7501733 (.0005" x .030" dial test indicator)		
• 7606009 (6" pocket rule with Asimeto logo)		
• 180-155 (Engineers Black Book)(Imperial)		

Rectangular Gage Block Set

ASIMETO

- Individual serial numbers on each block, regardless of grade
- A complete certificate of calibration traceable to the N.I.S.T. or P.T.B. showing the deviation of each block
- Mirror polished surfaces provide superior wringing characteristics
- 81 (ASME) blocks per set

Blocks Included In Set

- 1 Block: 0.050"
- 10 Blocks: 0.1000"-0.1009" x 0.0001" step
- 49 Blocks: 0.101"-0.149" x 0.001" step
- 17 Blocks: 0.150"-0.950" x 0.050" step
- 4 Blocks: 1.000"-4.000" x 1.000" step



Blocks	Grade	Code No.	SALE \$
81	AS-2 (B)	7650012	225.54

Surface Roughness Standards Set

ASIMETO

- Used for the visual comparison of surface roughness
- Set of 30 specimens, 7/8" x 3/8" electro-formed, solid nickel



Code No.	SALE \$
7506010	158.69

MIX & MATCH

**Any 3 Collet Chucks On This Page
(At 40% Off List)
And Get A Collet Set At Half Price.
Please Mention Promo USF2181 At Time Of Order**

ER Collet Sets



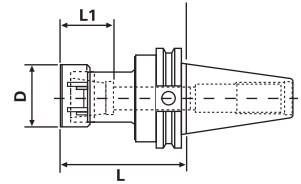
QUALITY IMPORT

• Shipped as set, no plastic container

Collet	Description	Range	Code No.	List \$	SALE \$
ER16	Inch 11pc Collet Set	1/16"-3/8" x 32nds	337-440	150.00	75.00
ER25	Inch 17pc Collet Set	1/8"-5/8" x 32nds	337-442	167.00	83.50
ER32	Inch 21pc Collet Set	1/8"-3/4" x 32nds	337-444	295.00	147.50

CAT40/50 ER Collet Chucks

- 100% Forged Construction
- CAT40 certified balanced 30,000 rpm
- CAT50 certified balanced 25,000 rpm
- Precision Ground Throughout
- DIN Coolant thru the flange - standard
- Threaded through holes for a back-up screw (tool stop) or coolant through when removed
- TIR, 0.003" at 4xDia.
- Wrench not included

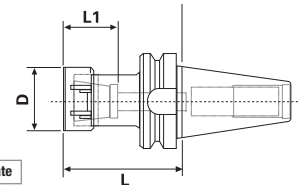


Taper	Collet Series	Collet Range	L	L1	D	Tightening Torque (Nm)	Code No.	List \$	SALE \$
CT40	ER16**	.019-.413"	2.50"	0.87"	1.26"	56.9	531-406	133.40	80.04
CT40	ER16**	.019-.413"	3.50"	0.87"	1.26"	56.9	531-408	149.10	89.46
CT40	ER16**	.019-.413"	4.00"	0.87"	1.26"	56.9	531-405	155.30	93.18
CT40	ER25	.059-.675"	2.50"	1.18"	1.65"	128.8	531-418	155.90	93.54
CT40	ER25	.059-.675"	4.00"	1.18"	1.65"	128.8	531-420	155.90	93.54
CT40	ER25	.059-.675"	6.00"	1.18"	1.65"	128.8	531-422	171.20	102.72
CT40	ER32	.078-.787"	2.50"	1.34"	1.97"	169.5	531-421	158.90	95.34
CT40	ER32	.078-.787"	3.13"	1.34"	1.97"	169.5	531-424	158.90	95.34
CT40	ER32	.078-.787"	4.00"	1.34"	1.97"	169.5	531-423	165.00	99.00
CT40	ER32	.078-.787"	9.00"	1.34"	1.97"	169.5	531-419	243.70	146.22
CT50	ER16**	.019-.413"	4.12"	0.87"	1.26"	56.9	531-432	221.80	133.08
CT50	ER32	.078-.787"	4.00"	1.34"	1.97"	169.5	531-454	231.60	138.96
CT50	ER32	.078-.787"	6.00"	1.34"	1.97"	169.5	531-456	238.50	143.10
CT50	ER32	.078-.787"	8.00"	1.34"	1.97"	169.5	531-458	286.90	172.14

** Hex Nut

BT Taper ER Collet Chucks

- 100% Forged Construction
- Certified balanced 30,000 rpm
- Precision Ground Throughout
- DIN Coolant thru the flange - standard
- Threaded through holes for a back-up screw (tool stop) or coolant through when removed
- Wrench not included



Taper	Collet Series	Collet Range	L	L1	D	Tightening Torque (Nm)	Code No.	List \$	SALE \$
BT40	ER16**	.019-.413"	3.50"	0.87"	1.26"	56.9	532-180	149.10	89.46
BT40	ER16**	.019-.413"	5.00"	0.87"	1.26"	56.9	532-182	160.90	96.54

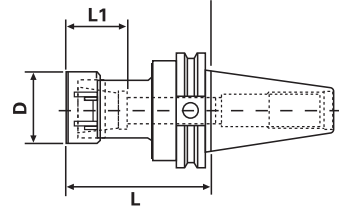
** Hex Nut

CAT40/50 ER Collet Chucks

- 100% Forged Construction
- CAT40 certified balanced 30,000 rpm
- CAT50 certified balanced 25,000 rpm
- Precision Ground Throughout
- DIN Coolant thru the flange - standard
- Threaded through holes for a back-up screw (tool stop) or coolant through when removed
- TIR, 0.003" at 4xDia.
- Wrench not included



Complete with certificate

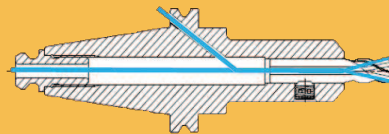


Taper	Collet Series	Collet Range	L	L1	D	Tightening Torque (Nm)	Code No.	List \$	SALE \$
CT40	ER11**	.019-.275"	4.00"	0.65"	0.75"	29.8	531-402	149.10	89.46
CT40	ER11**	.019-.275"	6.00"	0.65"	0.75"	29.8	531-404	160.90	96.54
CT40	ER20**	.019-.551"	2.50"	1.06"	1.38"	81.3	531-412	150.20	90.12
CT40	ER20**	.019-.551"	4.00"	1.06"	1.38"	81.3	531-414	150.20	90.12
CT40	ER20**	.019-.551"	6.00"	1.06"	1.38"	81.3	531-416	165.00	99.00
CT40	ER40	.118-1.023"	2.50"	1.50"	2.48"	219.6	531-427	160.50	96.30
CT40	ER40	.118-1.023"	6.00"	1.50"	2.48"	219.6	531-431	184.10	110.46
CT50	ER20**	.019-.551"	6.00"	1.06"	1.38"	81.3	531-442	246.20	147.72

** Hex Nut

FACTS ABOUT GS TOOLING HOLDERS

- 100% Forged Construction
- Certified Balanced up to 30,000 r.p.m. (with nut on holder)
- DIN Coolant Thru The Flange - Standard
- Traverse Ground Throughout



2 Coolant Options Standard



- **DIN Coolant through the flange standard** (Most competitors Standard Holders do not offer this - you need to order this as a special feature which is more expensive than GS standard holders)

- AT3 or better taper accuracy
- Material: Low Carbon Chromium-Molybdenum Alloy Steel - SCM415 hardened to HRC 58-60
- Maximum TIR 0.0002" O.D. to I.D.
- Each holder balanced with Haimer machine
- Each holder comes with a certificate of inspection lab report

End Mill Holders Taper/RPM

- BT30 End Mill Holders balanced to 20,000 rpm
- CAT/BT40 & HSK63 End Mill Holders Balanced to 30,000 rpm - (Competitors - 15,000 to 25,000 rpm)
- CAT/BT50 & HSK100 End Mill Holders balanced to 25,000 rpm

Shrink Fit Holders (Balanceable) -RPM

- BT30 balanced to 20,000 rpm
- CAT/BT40 & HSK63 balanced to 30,000 rpm
- CAT50 & HSK100 balanced to 25,000 rpm

Collet Chucks Taper/RPM

- Balanced with Nut on Chuck
- ER Chucks 30-20,000, 40-30,000, 50-25,000
- SA Collet Chucks 30/40-20,000, 50-15,000
- TG Single Angle Collet Chucks 30/40-20,000, 50-15,000
- DA Collet Chucks 30/40-20,000, 50-15,000



Note: You can see the compression of the steel core of the tool holder during the forging process
= Strongest holder on the market

CUTTING TOOLS

DS4 End Mill Kits



Coolant through



Consists of:
1 - DS4 45° End Mill
10 - LNMX151008PNR-M Inserts

Features Of The DS4 Insert

- Chip breaker has a high rake angle for smooth chip control
- Step design improves chip control by reducing the cutting load
- Major cutting edge for low cutting load
- Concave design to avoid interference between each cutting edge
- Specially designed minor cutting edge improves surface finish
- Periphery face has a strong and negative face (Clearance angle 0°)



*Ask about our guaranteed test

Kit Contents	Insert	Kit Code No.	SALE \$
1-1/4" (Z=2) DS4 4125HR-S125 (148-870) c/w 10 inserts (145-678)	LNMX151008PNR-M PM30P	149-781	158.76
1-1/2" (Z=3) DS4 4150HR-S125 (148-871) c/w 10 inserts (145-678)	LNMX151008PNR-M PM30P	149-782	191.36

DS4 Face Mill Kits



Coolant through



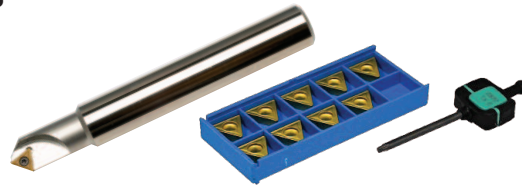
Consists of:
1 - DS4 45° Face Mill
30 - LNMX100605PNR-F2 Inserts



*Ask about our guaranteed test

Kit Contents	Insert	Kit Code No.	SALE \$
2-1/2" (Z=9) DS4 3250HR-M (148-374) c/w 30 inserts (145-636)	LNMX100605PNR-F2 PM30P	149-789	442.20
3" (Z=10) DS4 3300HR-M (148-376) c/w 30 inserts (145-636)	LNMX100605PNR-F2 PM30P	149-790	290.80

Chamfer Tool Kits



Consists of:
1 - CT 45° Chamfer Tool
10 - TCMT Inserts



*Ask about our guaranteed test

Kit Contents	Insert	Kit Code No.	SALE \$
1/8-5/8" Chamfer Tool 1 Flute (147-113) c/w 10 inserts (148-811)	TCMT 21.51 Inserts (Coated)	149-853	174.78
15/32-1-1/8" Chamfer Tool 2 Flute (147-112) c/w 10 inserts (148-707)	TCMT 32.52 Inserts (Coated)	149-855	131.16

Alumimill Kit



Consists of:
1 - AMFM Face Mill complete with
4 - VCKT 43.57.5 Inserts (Polished) (147-425)



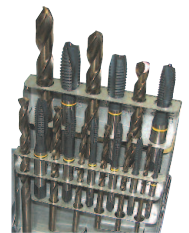
*Ask about our guaranteed test

Kit Contents	Kit Code	SALE \$
2-1/2" Face Mill (147-834) + 4 VCKT 43.57.5 Inserts	149-928	262.68

Yellow Ring Tap & Drill Set

Featuring Yellow Ring Taps
For tough materials including:

- High Carbon Steel
 - High Alloy
 - Titanium
 - Aluminum
- Premium HSS Drills with 135° split points
Comes in metal case.



Description	Code No.	SALE \$
N.C. Yellow Ring Spiral Point tap and drill set Set consists of the following Taps - 6-32 to 1/2-13 Drills - #36, #29, #25, #21, #7, F, 5/16, U, 27/64	113-651	168.35

SHOP SUPPLY CLEARANCE

Filter Regulator Combination



The **Filter-Regulator Combination** is one of the most popular air preparation units. The 2 are assembled together to form a single unit. The Filter is designed with a Separator & Shield for efficient moisture separation. It is combined with a Regulator which maintains a steady outlet pressure, unaffected by variations/fluctuations in the inlet pressure.



231-484

FRC-15

STANDARD

Max flow rate:

106 CFM / 3000 LPM

Bayonet type steel bowl guard,
Regulator with in-built Venturi for
Flow Compensation
Pressure Gage Port Size: 1/8"

- Max 145 PSI (10BAR)
- Ambient Temp
0-60°C (32-140°F)

Model	Description	Port Size	Bowl Size Oz. ml	Code No.	SALE \$
FRC159334-S	Standard	1/2"	1.5 44	231-484	51.40

Filter Regulator & Lubricator



The **Filter-Regulator Combination & Lubricator** are attached in series using spacers & piping adapters, which makes the 2 components easily removable / mountable without disturbing the pipe line. Comes complete with a wall mounting bracket.



231-488

FRCLM-15

STANDARD

Max flow rate:

99 CFM / 2800 LPM

Min flow rate:

1.59 CFM / 45 LPM

Bayonet type steel bowl guard,
Regulator with in-built Venturi
for Flow Compensation
Bowl Size (Filter): 44 ml
(Lubricator): 152 ml

- Max PSI: 145 (10BAR)
- Ambient Temp
0-60°C (32-140°F)
- Pressure Gage Port Size
1/8"



231-486

FRCLM-13

MINIATURE

Max flow rate:

18 CFM / 12 LPM

Min flow rate:

0.42 CFM / 12 LPM

Threaded type steel
bowl guard
Bowl Size (Filter): 9 ml
(Lubricator): 20 ml

Model	Description	Port Size	Code No.	SALE \$
FRCLM139134-S	Miniature	1/4"	231-486	50.92
FRCLM159334-S	Standard	1/2"	231-488	91.96

Fill Your Toolbox Today

3pc Aviation Snip Set



- Fine polish



Description	Code No.	SALE \$
Aviation Snip Set	505-003	13.80

Utility Knives



Description	Code No.	SALE \$
Folding Cutter Knife	505-010	2.72
Snap-Off Blade Utility Knife	505-011	0.44

9pc Combination Wrench Set



- 1/4" - 3/4"
- Mirror polished
- Drop forged
- Hardened and tempered



Description	Code No.	SALE \$
9pc Combination Wrench Set	505-001	15.32

Filter Regulator Combination w/ Pressure Gage & Bracket



Compact combination unit for removing contaminants & moisture from compressed air in addition to regulating air pressure. Regulator has a non-raising "Press to Lock" adjusting knob for locking at any set pressure. Filter is designed with a separator & shield for efficient moisture separation. Supplied complete with pressure gage and wall mounting bracket.



Model	Description	Gage Port Size	Inlet/Outlet Port Size	Code No.	SALE \$
FRC139134-S/G	Miniature	1/8"	1/4"	231-482	28.00

Air Regulator with Pressure Gage & Bracket



Maintains steady outlet pressure, unaffected by variations/fluctuations in the inlet pressure.

- Steps down the air line pressure & can be set at any desired pressure below the inlet pressure
- Max pressure: 220 psi
- Pressure Adjustment Range: 7 - 145 psi
- Can be installed in any position (horizontal, vertical, etc.)



Port Size	Max Flow Rate	Description	Model	Code No.	SALE \$
1/2" NPT	140 CFM/4000 LPM	Standard	R15934/G	231-480	34.16

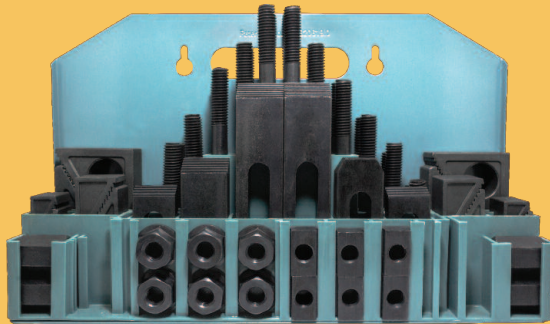


5/8" Table Slot Machinist Clamping Kit



Each set contains

- 24 1/2-13 Studs 4 each 3, 4, 5, 6, 7, 8" lengths
- 6 T-slot nuts
- 6 Flange nuts
- 4 Coupling nuts
- 6 1" Thick Step blocks
- 6 Serrated end clamps
- 1 T-slot cleaner
- 1 Metal holder



CODE: 333-550

\$81.00

\$110.40 Value

Coolant Proof Dial Indicator



- Water Resistant
- Reverse counter
- Stainless steel components
- Rotating bezel with clamp
- Lugback (1/4" hole)
- Interchangeable point
- Conforms to AGD 2 standards



Travel Range (in.)	Dial Reading (in.)	Grad. (in.)	Dial Colour	Code No.	SALE \$
0-.4	0-50	.0005	White	200-075	31.99

Single Beam Digital Height Gage with Hand Wheel

ASIMETO

- Resolution: .0005" / 0.01mm
- Large LCD display
- Hand wheel design for fine adjustment
- Metric/Inch conversion at any position
- Zero setting on any position
- Carbide tipped scriber provided
- Manual power On/Off



Range	Accuracy	Code No.	SALE \$
0-24"/0-600mm	±.0020"/±0.05mm	7626240	476.21

Distributed By:

Pricing valid from February 1 to May 31, 2018 or while quantities last.

We reserve the right to make changes without notice and accept no liabilities for mistakes and printing errors. All taxes extra.



Sowa Tool & Machine Co. Ltd.
500 Manitou Drive
Kitchener, Ontario
N2C 1L3

Maumee, Ohio Branch
416 W. Dussel Drive
Maumee, Ohio
43537

Toll Free: 1-800-265-8221
Phone: (519) 748-5750
Fax: (519) 748-9304
Email: sales@sowatool.com
web: www.sowatool.com



Printed in Canada