



DTP 340 A

Fast and reliable, heavy-duty, semi-automatic, desktop punching machine.
Very versatile machine for all types of book and calendar punching production.



PREMIUM QUALITY WORLDWIDE
MADE IN GERMANY 

Customer benefits:

- Punching dies for all types of ring wire, plastic comb, coil and calendars.
- Punch a wide range of mixed stocks
- Fast die changes
- Fastest machine in its class with automatic paper ejection. Up to 3 times faster than a standard bench top machine
- QSA (Quick Size Adjustment) for high flexibility of different paper formats⁽¹⁾
- Vertical paper feeding for precise punching


Maximum:

 Width
340 mm

 Punch up to⁽¹⁾
3.5 mm

Output:

 Mechanical cycles
per hour
1,200

 Max. punched
sheets per hour
36,000

All performance outputs are based on 80 gsm paper and may vary depending on the product type, the working environment and the operator. For best punching results we recommend a paper thickness of 2.0 - 2.5 mm.

⁽¹⁾ Dependent on the die type.





Strong and reliable German engineered punching dies with a working width of 340 mm. Available in a wide range of different punch patterns.



Simple vertical loading system for quick and effortless die changes.



QSA (Quick Size Adjustment) technology allows the quick cancellation of punching pins without the need to remove the die.



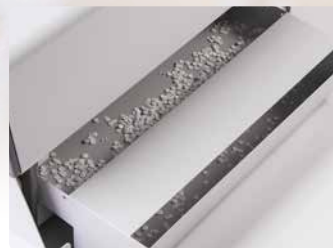
The depth gauge feature allows the operator to adjust the punched hole margin from 2 mm to 4,5 mm⁽¹⁾. This adds strength to the bound edge.



Simple to use control panel for adjusting paper format and pitch. The automatic sensor can be turned on or off.



Paper stop with automatic sensor. Activated when the paper is placed in the die and moved over the sensor allowing for fast and accurate punching.



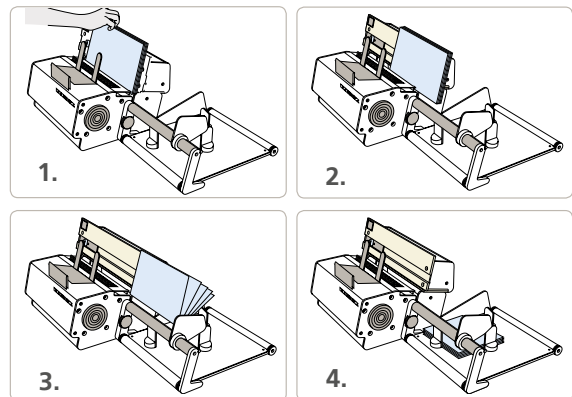
Large waste tray which can be easily removed allowing emptying from the rear of the machine.



The paper tray collects the automatically ejected punched sheets ready for binding.

Technical data:	DTP 340 A
Mechanical cycles per hr:	1,200
Min. punching width:	10 mm
Max. punching width:	340 mm
Min. unpunched length:	110 mm
Max. unpunched length:	800 mm
Max. punching thickness: ⁽¹⁾	3.5 mm
Punching operation:	Sensor or foot pedal
Punch dies available:	3:1, 2:1 ring wire, calendar, coil, plastic comb
Die type:	Standard
Selectable punch pins (QSA):	Yes
Bespoke dies:	No
Variable margin depth: ⁽¹⁾	Yes
Die changeover time:	2 min
Machine dimensions L x W x H:	880 x 640 x 380 mm
Machine weight: ⁽²⁾	53 kg
Machine packaging dimensions L x W x H:	1,080 x 600 x 500 mm
Machine weight with packaging: ⁽²⁾	89 kg
Power requirement:	230/250V / 50 Hz / 300W 115/200V / 60Hz / 300W

Workflow:



Technical modifications may be made without notice.

1 mm = 10 sheets of paper, based on 80 gsm.

All performance outputs are based on 80 gsm paper and may vary depending on the product type, the working environment and the operator. For best punching results we recommend a paper thickness of 2.0 - 2.5 mm.

⁽¹⁾ Dependent on the die type.

⁽²⁾ Weight excluding the die.

For further information and videos please visit: