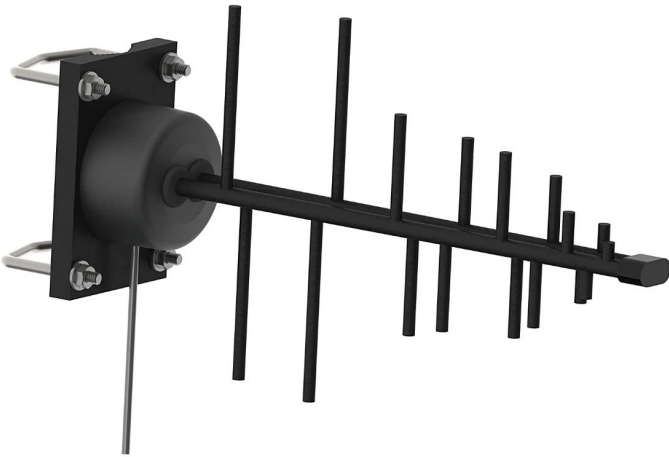


RY-4-14-SNF Wideband Yagi Antenna 9 Elements, 615-6100 MHz

This 9 element 4g/LTE/5G Yagi antenna provides excellent wide band performance over 615-6100 MHz.. The heavy duty mounting plate is extruded aluminum. Stainless steel V bolts are provided for long term reliability and resistance to corrosion. The elements are welded to the boom to provide excellent stability and internmod resistant operation. This Yagi antenna is easily installed by one person, yet is designed to withstand 126 MPH winds.



- Standard N Female connector
- Vertical Polarization
- Rugged and Weatherproof
- Lightweight and Durable
- UV inhibited ABS Material
- High gain directional antenna
- Cellular coverage includes 617 MHz Band 71
- Outdoor LTE implementations



WIFI



LTE



900 MHz



5G



N-Female



ELECTRICAL DATA

Frequency 1	615-4200 MHz
Frequency 2	4200-6100 MHz
Gain 1	13.9 dBi
Gain 2	6.1 dBi
Polarization	Vertical
VSWR	< 2:1
Impedance	50 Ohms
Max Power	150 W

ENVIRONMENTAL DATA

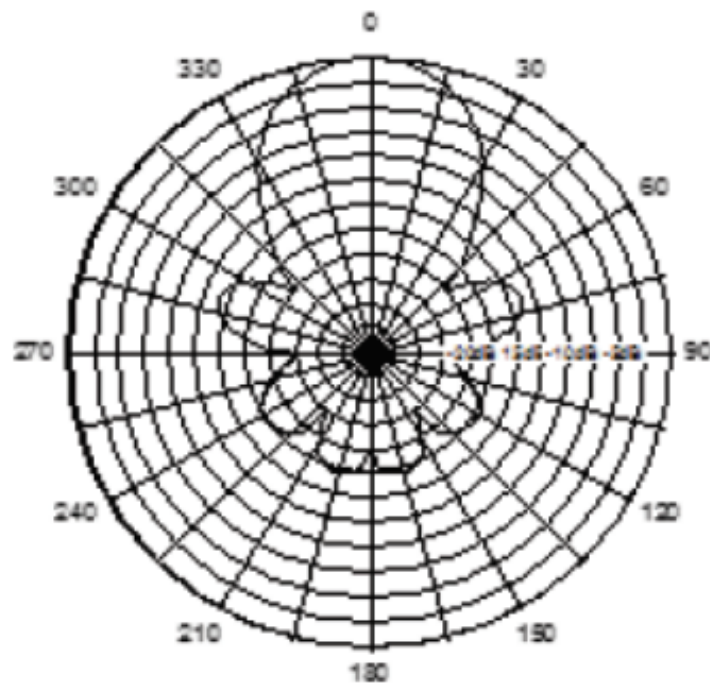
Wind Rating	126 MPH
Wind Load	8.1 lbs

MECHANICAL DATA

Color	Black
Connectors	N Female
Weight	2 lbs
Length	18.5" (470 mm)
Mounting	2 1/2" Mast (maximum)

Radiation Pattern

Horizontal Pattern



Vertical Pattern

