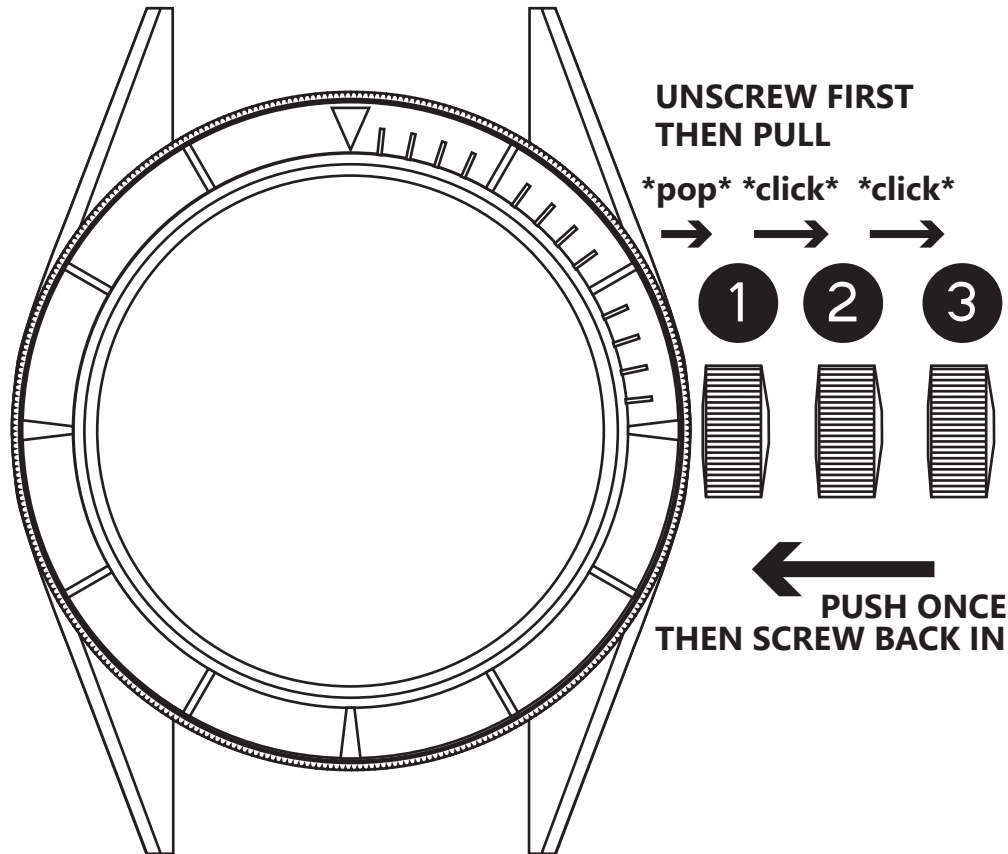


***HYDRA***  
**OWNER'S MANUAL**

# SETTING THE TIME



1

## WINDING POSITION

Rotate the crown counter-clockwise to unscrew it. The crown will "pop" out once fully unscrewed. Rotate clockwise to wind the watch. 40 turns will bring it to a full-wind state.

2

## DATE SET POSITION

Gently pull out the crown to Position 2 to and turn counter-clockwise to advance the date.

Note: please do NOT set the date between 10 PM and 2

3

## TIME SET POSITION

Gently pull out the crown to Position 3 to set the time. Turn the crown clockwise to set the time forward.

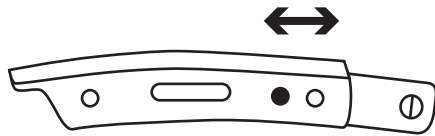
## SECURING THE CROWN

Push the crown back in only once. Keep pressure on the crown until you can feel the crown threads catch. Turn clockwise to screw back in.

## NOTE:

**Please keep the crown secured when the watch is in use.**

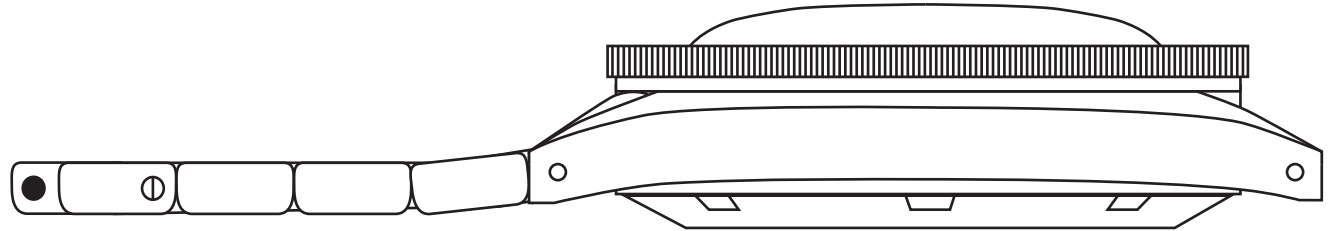
# RESIZING/CHANGING THE BRACELET



## MICROADJUSTMENT

Use the round end of the strap changing tool to push in the clasp springbar, then move the springbar into the desired slot.

Make sure it is in the same slot on both sides of the clasp.



## SIZING WITH LINKS

Use the screwdriver to remove and replace links as needed.

For a secure fit, we highly recommend applying low-strength threadlocker, such as Loctite 222/222MS (not included).



## CHANGING STRAPS

Use the strap changing tool to remove and replace the springbar.

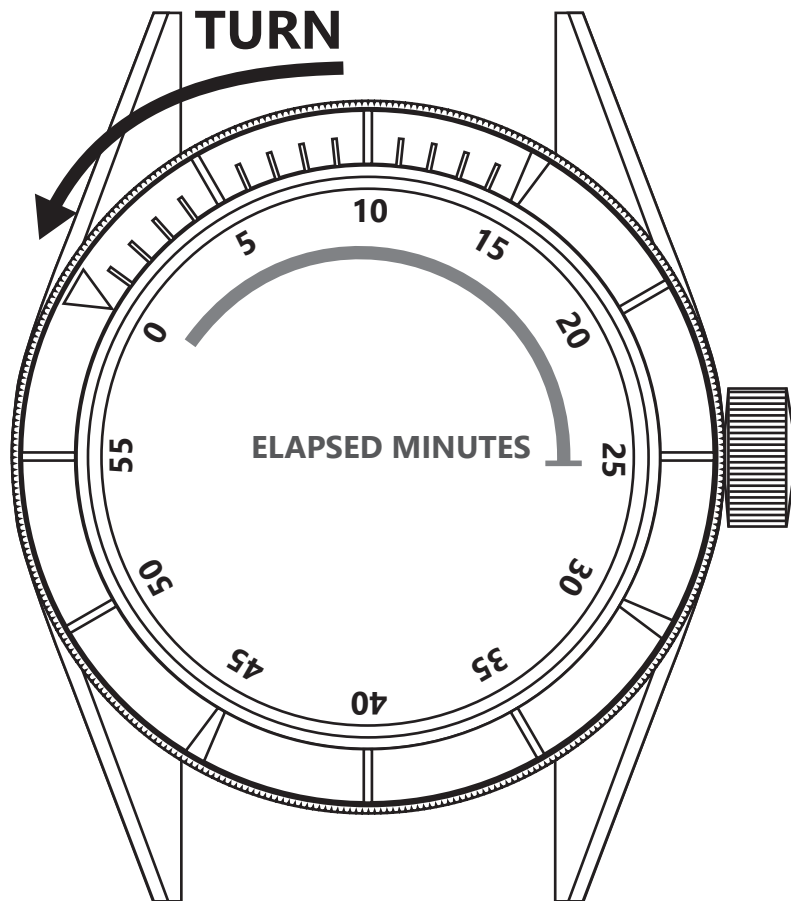
One side at a time, insert the round end into the lug holes and gently pull the bracelet so that both ends are out.

Place the springbar back into the holes for use with another strap.

**PLEASE USE CAUTION  
WHEN REMOVING THE  
SPRINGBAR AS IT COULD  
FLY OUT**



# OPERATING THE TIMING BEZEL (ELAPSED MINUTES)

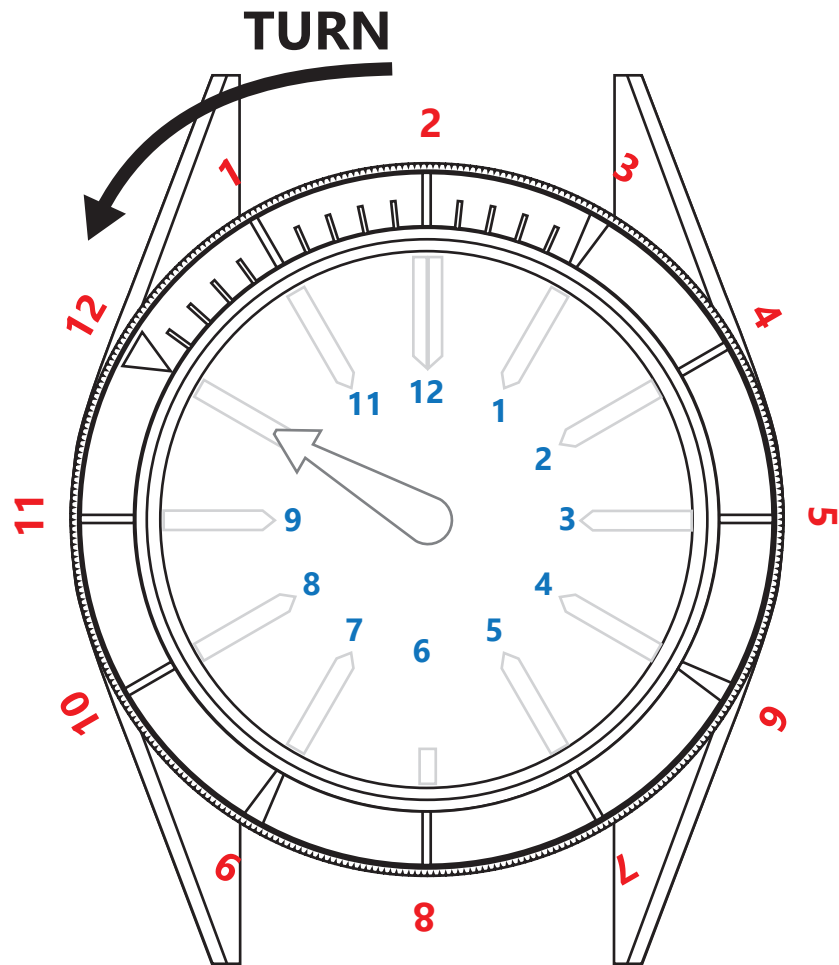


The timing bezel rotates counter-clockwise. Simply turn the bezel triangle to the current position of the minute hand in order to show elapsed time.

**NOTE:**

**Please do not force the bezel to turn clockwise as it will break the mechanism.**

# OPERATING THE TIMING BEZEL (TRACKING A SECOND TIME ZONE)



The timing bezel rotates counter-clockwise.

To track a second time zone, use the bezel markers as a second set of hour markers.

In the illustration, it is **10 o'clock in time zone A, as indicated on the dial**, and **12 o'clock in time zone B, as indicated on the bezel**.

## NOTE:

Please do not force the bezel to turn clockwise as it will break the mechanism.

## GENERAL CARE INSTRUCTIONS

- \* Always have the crown fully secured before submerging into water.
- \* Do not attempt to open caseback without prior approval from Lorier, as this will void your warranty.
- \* Scratches on the crystal can be buffed out using a soft cloth and a polishing compound such as Polywatch (not included). In a pinch, toothpaste will do as well.
- \* Scratches on the **brushed surfaces** of the case can be removed with a green 3M Scotchbrite pad (not included). Brush gently in one direction until the scratch is removed.
- \* Scratches on the **polished surfaces** of the case can be removed with a Cape Cod cloth (not included). Use caution NOT to make contact with brushed surfaces.
- \* Thoroughly rinse in fresh water after submerging in salt water.

## FREQUENTLY ASKED QUESTIONS

### 1. My watch stopped! What can I do?

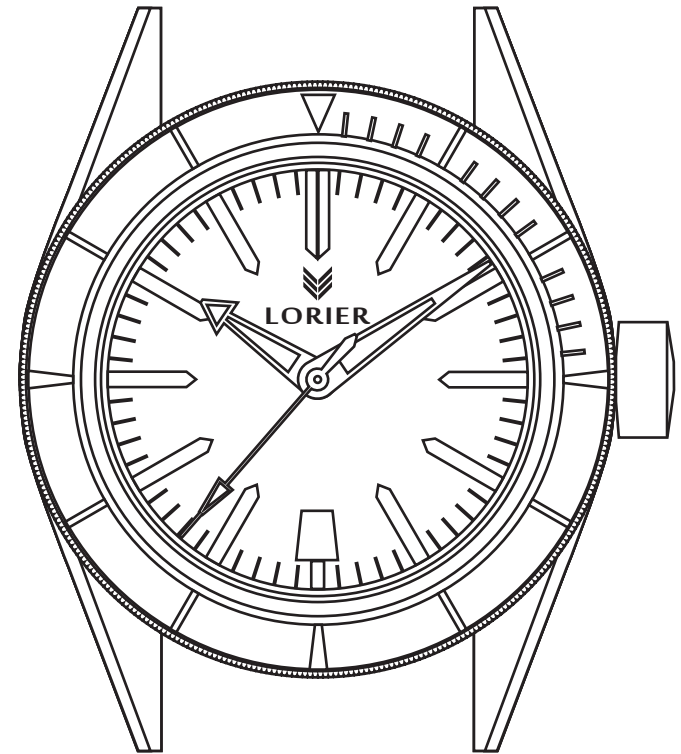
Your watch runs based on the movements of your arm. Give your watch a shake and wind using the crown to get the watch moving again.

### 2. My watch is not keeping time well! What can I do?

Your watch may be magnetized. A watchmaker with a demagnetizer will address the issue within minutes, for a minimal fee.

### 3. How do I remove the blue sticker on the crown?

Take a piece of tape, place it on the blue sticker, and peel off.



For any other inquiries,  
please contact

[info@lorierwatches.com](mailto:info@lorierwatches.com)