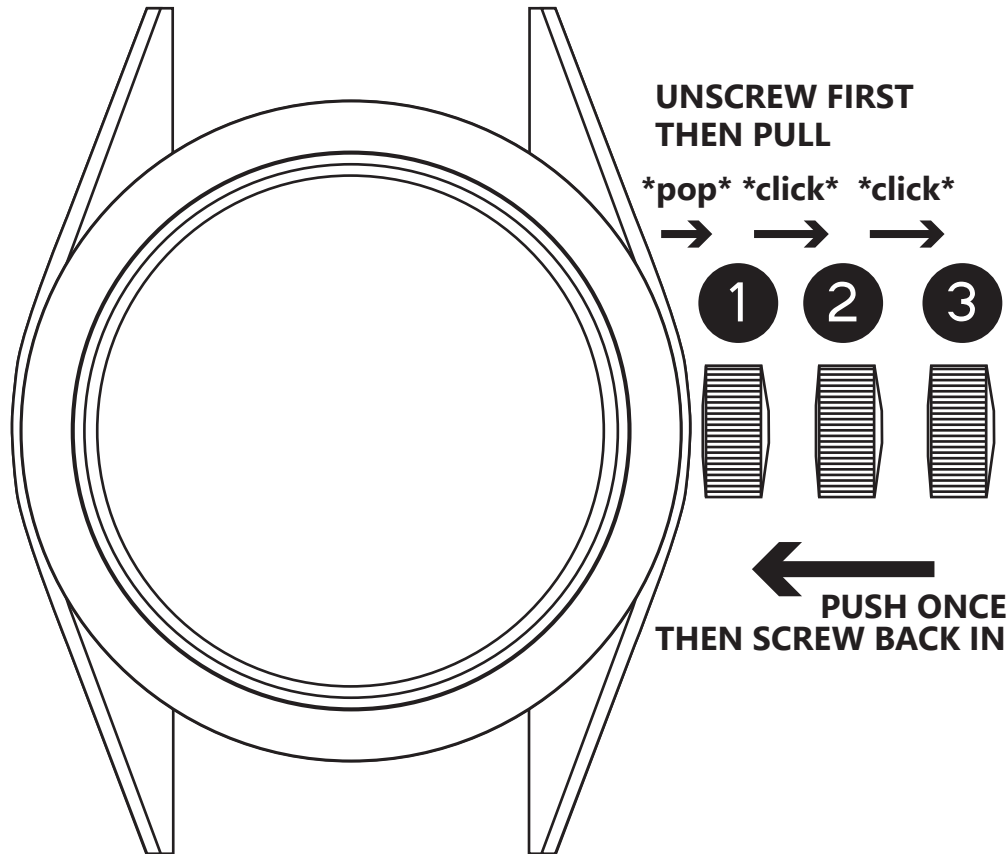




FALCON
OWNER'S MANUAL

SETTING THE TIME



1

WINDING POSITION

Rotate the crown counter-clockwise to unscrew it. The crown will "pop" out once fully unscrewed. Rotate clockwise to wind the watch. 40 turns will bring it to a full-wind state.

2

DATE SET POSITION

Gently pull out the crown to Position 2 to and turn counter-clockwise to advance the date.
Note: please do NOT set the date between 10 PM and 2 AM.

3

TIME SET POSITION

Gently pull out the crown to Position 3 to set the time. Turn the crown clockwise to set the time forward.

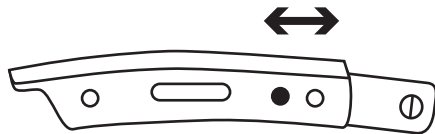
SECURING THE CROWN

Push the crown back in only once. Keep pressure on the crown until you can feel the crown threads catch. Turn clockwise to screw back in.

NOTE:

Please keep the crown secured when the watch is in use.

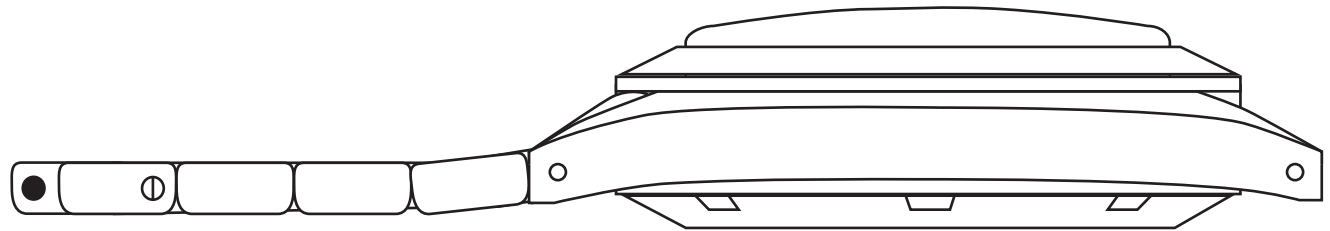
RESIZING/CHANGING THE BRACELET



MICROADJUSTMENT

Use the round end of the strap changing tool to push in the clasp springbar, then move the springbar into the desired slot.

Make sure it is in the same slot on both sides of the clasp.



SIZING WITH LINKS

Use the screwdriver to remove and replace links as needed.

For a secure fit, we highly recommend applying low-strength threadlocker, such as Loctite 222/222MS (not included).



CHANGING STRAPS

Use the strap changing tool to remove and replace the springbar.

One side at a time, insert the round end into the lug holes and gently pull the bracelet so that both ends are out.

Place the springbar back into the holes for use with another strap.

**PLEASE USE CAUTION
WHEN REMOVING THE
SPRINGBAR AS IT COULD
FLY OUT**



GENERAL CARE INSTRUCTIONS

- * Always have the crown fully secured before submerging into water.
- * Do **NOT** attempt to open caseback without prior approval from Lorier, as this will void your warranty.
- * Do **NOT** use alcohol to clean your watch. Warm water will suffice.
- * Scratches on the crystal can be buffed out using a soft cloth and a polishing compound such as Polywatch (not included). In a pinch, toothpaste will do as well.
- * Scratches on the **brushed surfaces** of the case can be removed with a green 3M Scotchbrite pad (not included). Brush gently in one direction until the scratch is removed.
- * Scratches on the **polished surfaces** of the case can be removed with a Cape Cod cloth (not included). Use caution NOT to make contact with brushed surfaces.
- * Thoroughly rinse in fresh water after submerging in salt water.

FREQUENTLY ASKED QUESTIONS

1. My watch stopped! What can I do?

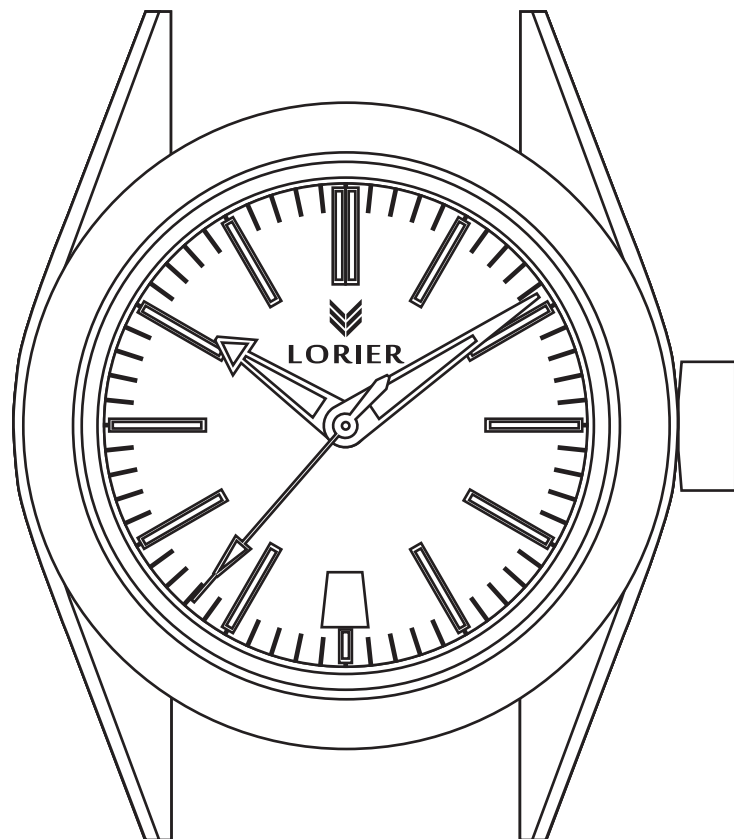
Your watch runs based on the movements of your arm. Give your watch a shake and wind using the crown to get the watch moving again.

2. My watch is not keeping time well! What can I do?

Your watch may be magnetized. A watchmaker with a demagnetizer will address the issue within minutes, for a minimal fee.

3. How do I remove the blue sticker on the crown?

Take a piece of tape, place it on the blue sticker, and peel off.



For any other inquiries,
please contact

info@lorierwatches.com