

20" MRS. CLAUS - Dress
Copyright 1998

(Fits 20" Mrs. Claus Head, Hands & 20" Old Woman Shoes)

FABRICS & NOTIONS

- 1 Yds. Red Velvet 45" Width - dress
- 1 Yds. White Seersucker 45" Width - apron
- 1 Yds. White Batiste 45" Width - pantaloons, slip
- 3 Yds. White Flat Eyelet Lace 2" Width - slip, pantaloons
- 2 Yds. White Eyelet Lace Beading 1/2" Width - slip, pantaloons
- 2 Yds. Red Satin Ribbon 1/4" Width - slip, pantaloons
- 2 Yds. Gold Metallic Flat Lace 3/4" Width - apron trim
- 7/8 Yd. Gold w/Burgundy Braid 1/4" Width - apron trim
- 14" Gold Metallic Flat Lace 3/8" Width - dress neckline
- 8 Small Snaps - dress
- 3 Dress Hook & Eye Sets - apron waistband, slip waistband
- Clear Monofilament Machine Thread - topstitching braid
- 1/2 yd. Braided Elastic 1/4" Width - pantaloons
- OPTIONAL - Red Hem Tape - dress hem, sleeve hem

READ ALL INSTRUCTIONS BEFORE CUTTING FABRICS

- A. All seams are 1/4" unless otherwise indicated.
- B. All pieces are sewn with right sides together unless otherwise indicated.
- C. Finish the velvet seams with a serge stitch, zigzag or use pinking shears to prevent raveling.
- D. There are two threads in the heading of the 3/4" Gold Metallic Lace. Pull these threads when gathering the lace.

DRESS CONSTRUCTION:

1. Fold and sew the shoulder tucks on the bodice front. Fold and pin the tucks on the lower bodice front and back to hold in place.
2. Sew the front and back bodice together at the shoulder seams. Repeat for neck facings.
3. Sew the facing to the neckline. Clip seam and turn. Pull the neck facing away from the bodice and edge stitch near the neck seam, sewing through the seam allowances and the neck facing. This will help the facing lie flat.
4. Tack the facing outer edge at the bodice shoulder seams.
5. Sew two rows of gathering stitches across the top of each sleeve. **SEE PATTERN FOR PLACEMENT.**
6. Pull up gathers to fit the armhole. Distribute gathers evenly, pin and set sleeves.
7. Sew bodice side seams and sleeve seams.
8. Sew two rows of gathering stitches across the skirt top.
9. Pull up gathers to fit the bodice. Finish both center back skirt edges. Open out center back bodice facings. Pin and sew skirt to bodice and facings.
10. Topstitch hemming tape to the skirt bottom edge. Turn under a 1 1/2" velvet hem plus width of hemming tape. Hand stitch in place. Turn in skirt center back facings and tack to hem.

11. Sew snaps on bodice back and skirt.
12. Slightly gather and hand stitch 3/8" gold metallic lace around the edge of the neckline. The scalloped edge of the lace should be pointed down toward the bodice.
13. Turn under and hem each sleeve according to the pattern. (Red hem tape can be sewn to edge)

APRON CONSTRUCTION:

14. Shoulder straps - Fold 1/4" seam under on the long edges and press. Then fold the strap in half lengthwise and topstitch the two folded edges together.
15. Sew two rows of gathering stitches across the top and bottom of apron bib. Pull up gathers to fit the bib lining.
16. Pin both shoulder straps to the bib lining. **SEE PATTERN FOR PLACEMENT.** Position bib on top of bib lining and straps. Sew the bib and lining together at the sides and across top. Clip corners, turn and press the seam edges only.
17. Gather an 11" length of gold lace and baste across the bib top about 1/8" below the seam edge. Topstitch a 5 1/2" length of gold/burgundy braid to cover the heading of the basted lace.

PATTERN NUMBER DA 1489
BODY NUMBER DA 1488

MOLD AVAILABLE FROM:

THE DOLLING ARTWORKS

37104 HWY CC
 LATHAM, MO 65050
 TEL. 660-458-6285
 ORDERS ONLY
 800-886-3655



www.dollartworks.com

18. Gather 3/4" gold lace and sew on the bib side and the shoulder strap. Top stitch gold/burgundy braid over the gathered lace heading. Prepare both sides of the bib and both shoulder straps. **SEE FLIER.**
19. Fold waistband in half lengthwise, right sides together, and sew both end seams. Turn and press.
20. Find center of waistband and mark with a pin. Find center of lower bib edge and mark with a pin. Pin the lower bib and lining edges to one side of the waistband at the center marks. Set aside.
21. Sew a 1/8" hem on each side of the apron skirt. Sew two rows of gathering stitches across the top edge. Pull up gathers
22. Sew the two skirt ruffle lengths together at one short end.
23. Fold the ruffle in half lengthwise and sew both end seams. Turn and press.
24. Pull up gathers to fit the bottom edge of the skirt, pin and sew ruffle to skirt. Serge the seam edge.
25. Find center of skirt and pin to the waistband at the center mark.
26. Sew skirt to waistband and bib.
27. Turn under remaining edge of the waistband 1/4" and blind stitch to the waistband and skirt seam.
28. Bring the shoulder strap ends down and sew to the waistband back 3 from the end of the waistband. Top stitch gold/burgundy braid to bottom edge of waistband.
29. Sew two dress hook and eyes to the waistband for closures. Decorate skirt with bells etc.

SLIP CONSTRUCTION:

30. Fold slip waistband in half lengthwise and sew the end seams. Turn right side out and press.
31. Sew two rows of gathering stitches across the skirt top.
32. Fold in 3/8" seam allowance on each skirt center back edge. Pull up gathers to fit the waistband, pin and sew skirt to waistband leaving the waistband lining free.
33. Turn under lower edge of lining 1/4" and hand stitch the folded edge to the waistband and skirt seam.
34. Skirt Ruffle - Gather 2" flat eyelet lace to fit the skirt bottom. Distribute gathers evenly, pin and sew ruffle to skirt. Press seam allowance upward.
35. Top stitch 5/8" eyelet beading at the skirt and ruffle seam. Weave 1/4" red satin ribbon through the beading.
36. Sew 3/8" center back skirt seam leaving the top 4" open.
37. Sew a dress hook and eye on the waistband.

PANTALOONS CONSTRUCTION:

38. Sew center front and center back seams.
39. Sew 2" flat eyelet lace to the wrong side of each leg, raw edges even. Turn lace to right side,

press seam upward. Topstitch eyelet beading over the lace and leg seam, thus covering the seam allowance. Weave 1/4" red ribbon through beading.

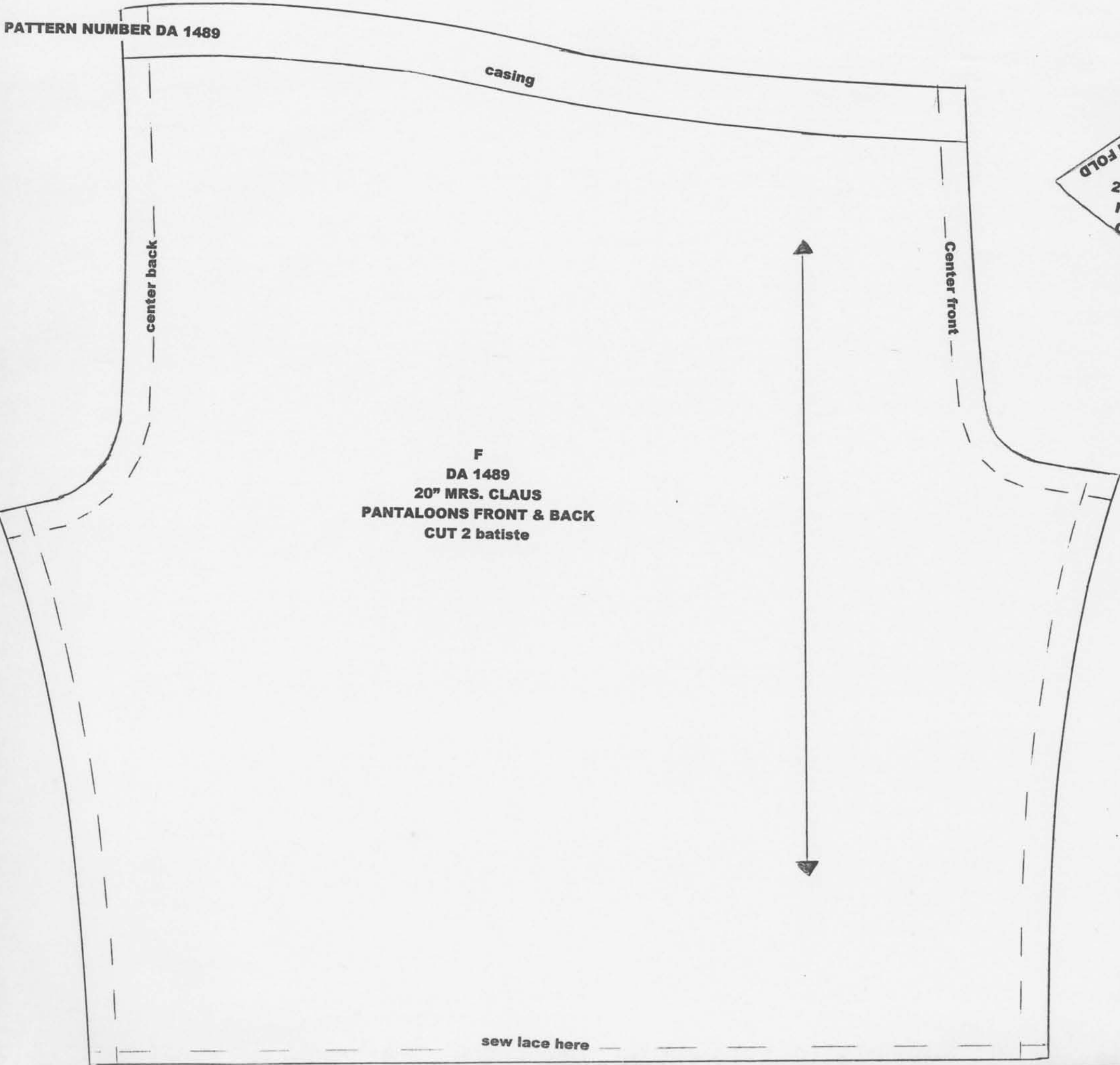
40. Sew the leg inseam.
41. Turn under and sew the waist casing leaving a small opening for inserting elastic at center back.
42. Insert 1/4" elastic, lap elastic ends one over the other and sew together.
43. Close the casing opening with a machine stitch.

This pattern contain 6 pieces:

- A- DRESS BODICE FRONT**
- B- DRESS BODICE BACK**
- C- SLEEVE**
- D- DRESS NECK FRONT FACING**
- E- APRON BIB LINING**
- F- PANTALOONS FRONT & BACK**

PATTERN PIECES ARE NOT PROVIDED FOR THE FOLLOWING:

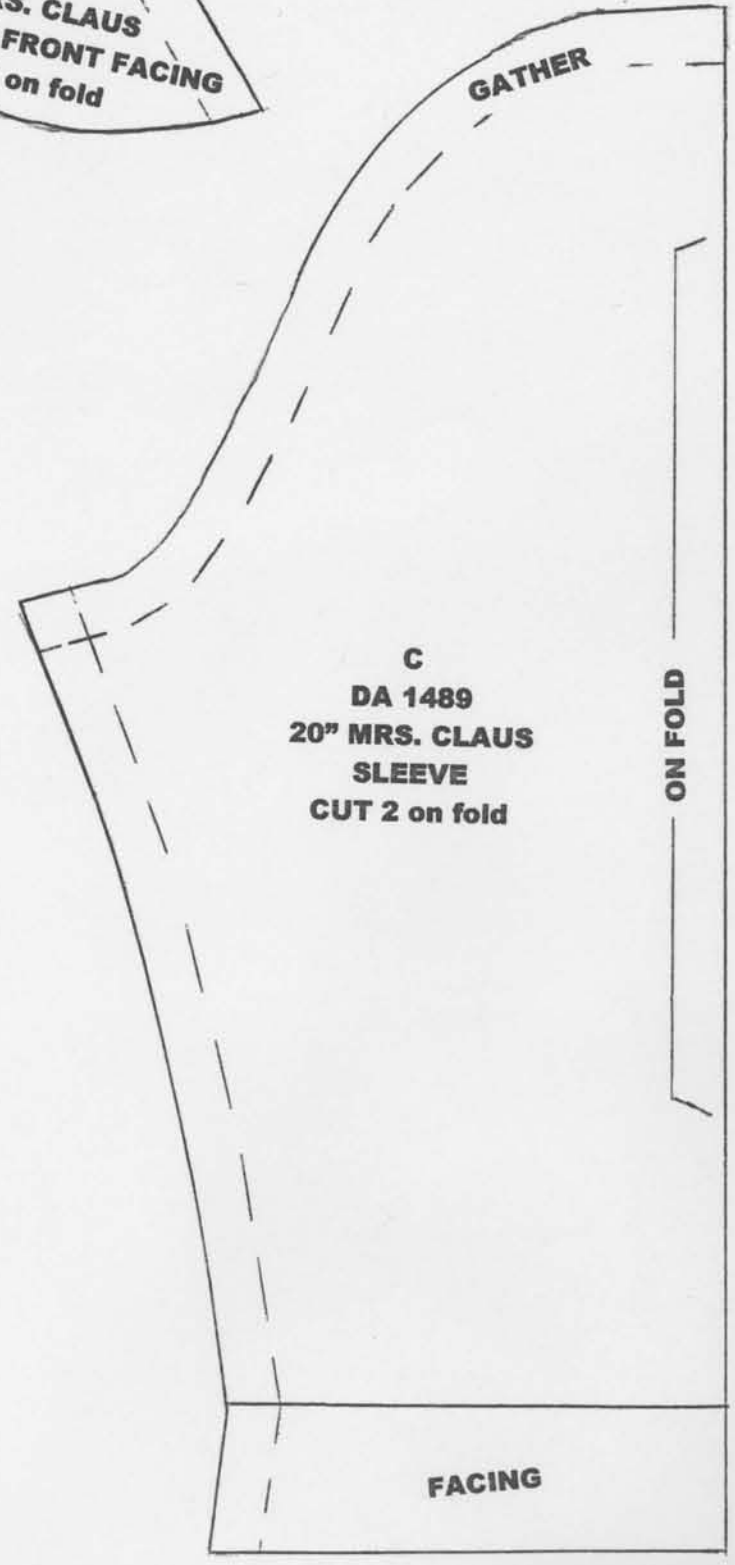
DRESS SKIRT CUT 1 - velvet 35" x 12"
APRON BIB CUT 1 - seersucker 6" x 3"
APRON SHOULDER STRAPS CUT 2 8 " X 1 "
APRON WAISTBAND CUT 1 18" X 2 "
APRON SKIRT CUT 1 35" X 7"
APRON SKIRT RUFFLE CUT 2 35" X 3"
SLIP SKIRT CUT 1 35" X 1 1"
SLIP WAISTBAND CUT 1 16" X 1"



F
DA 1489
20" MRS. CLAUS
PANTALOONS FRONT & BACK
CUT 2 batiste



D
DA 1489
20" MRS. CLAUS
NECK FRONT FACING
CUT 1 on fold



C
DA 1489
20" MRS. CLAUS
SLEEVE
CUT 2 on fold

FACING

