

20" MRS. CLAUS BODY

Copyright 1998

(Use 20" Mrs. Claus Head, Hands and 20" Old Woman Shoes)

FABRICS & NOTIONS

7/8 yd. Muslin 45" Width

Floral Wire 22 Gauge - joining porcelain to body

3 Ft. 2" Romex Wire 12/2 Gauge - arms

2 Ft. CPVC Pipe (Hot Water Pipe) 1/2" Diameter - legs & torso

Hot Glue Gun

Hot Glue Sticks

Polyfil

1/4 Cup Doll Pellets - droopy Ta Ta's

1 Fancy Weighted Doll Stand by The Doll Artwork's Inc.

READ ALL INSTRUCTIONS BEFORE CUTTING FABRIC

- A. All seams are 1/4" unless otherwise indicated.
- B. All pieces are sewn with right sides together unless otherwise indicated.
- C. The armature method given in this pattern can be used with a rod doll stand. Make a hole in the sole of the foot usually near the heel. The rod extends up into the leg. Prepare greenware following directions given with the stand.

BODY CONSTRUCTION:

1. Sew the fronts together at the center front seam.
2. Sew the backs together at the center back from the notch down to the point.
3. Sew two rows of gathering stitches between the notches on the seat.
4. Pull up gathering threads to fit the notches on the upper back. Pin and sew seat to back.
5. Sew the front and back together at the side seams. Carefully match and pin notches together before sewing.
6. Sew leg inseam. Double stitch the curve of the crotch, then clip the curve up to the second row of stitching. SEE PATTERN.
7. Sew the shoulder darts leaving an opening between the dots. SEE PATTERN.
8. Press the bias neck casing under 1/4" on both the long edges. Then fold it in half lengthwise like folded bias tape.
9. Place the neck casing on the neck and sew casing to neck. The casing ends will be slightly longer than the neck.

10. Prepare the arm wrist casing as directed in Step 8. Place casing on wrist and sew in place. The casing will be slightly longer than the wrist.
11. Fold the arm in half lengthwise and sew the long arm seam down to the dot.
12. Sew two rows of gathering stitches around the front "Ta Ta" piece. SEE PATTERN FOR PLACEMENT.
13. Pull up gathering threads to fit the back "Ta Ta" piece. The gathers should be concentrated around the bottom of the Ta Ta's and allowing slight gathering on the sides. Pin and sew the front and back pieces together. Double stitching on each side of the center point. Clip the seam to the stitching at the point. Turn "Ta Ta's" right side out.
14. With needle and doubled and knotted thread, sew a double row of gathering stitches about 1/8" apart on the front Ta Ta's piece. Sew from the seam allowance up to the dots. SEE PATTERN. Pull up

PATTERN NUMBER DA 1488

MOLD AVAILABLE FROM:

THE
DOLL INC
ARTWORKS

37104 HWY CC

LATHAM, MO 65050

TEL. 660-458-6285

ORDERS ONLY

800-886-3655



www.dollartworks.com

stitches to measure 1 1/2" and tie off. Set aside.

BODY ASSEMBLY:

15. CPVC pipe - Cut 2 each 9" long.
- 12/2 Gauge Romex Wire - Cut 2 each 15" long.
16. Hot glue 1 length of CPVC pipe into each shoe centering the pipe over the hole drilled in each shoe sole. Stuff polyfil around the pipe filling the shoe and all but 1/4" of the leg top. Fill the top 1/4" of the leg with hot glue. Let glue set up. Prepare both legs.
17. Bend a 1/2" "U" shape on one end of each arm wire. Place the bent end into the hand. Stuff with polyfil and fill the top 1/4" of the hand with hot glue. Let glue set up.
18. Insert floral wire into each cloth leg casing. Bind porcelain leg to the cloth leg. After tightening wire, bend the wire tails back into the cloth leg opening and over the top of the leg.
19. Stuff cloth legs firmly with polyfil keeping the pipe centered. Continue to stuff about 2 or 3" above the seat.
20. Place floral wire into the wrist casing. Bind the porcelain hands to the cloth.
21. After tightening the wire bend the wire tails back into the arm and over the top edge of the hand.
22. Softly stuff the arms with polyfil keeping the Romex wire in the center.
23. Insert arm wire into the cloth body through the opening in shoulder dart.
24. Measure 5" from the end of the arm wire and mark with a pencil. Bend the wire down at the "mark". Tape the wires together with strapping tape at this mark.
25. Insert the end of the wire from the right arm into the right leg pipe. Repeat for left side. Tape the wire and pipe together with strapping tape.
26. Finish stuffing the body firmly.
27. Stuff the doll head with polyfil then insert a length of floral wire into the neck

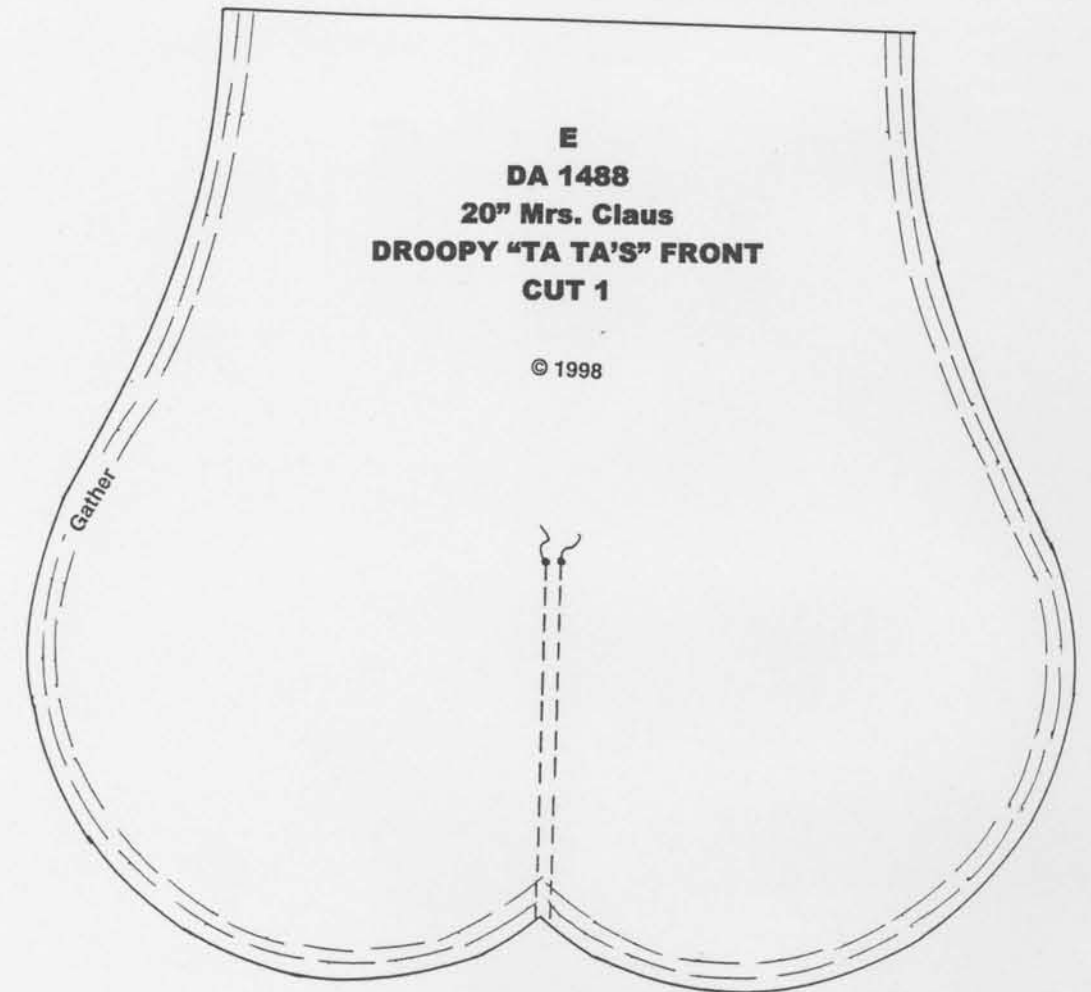
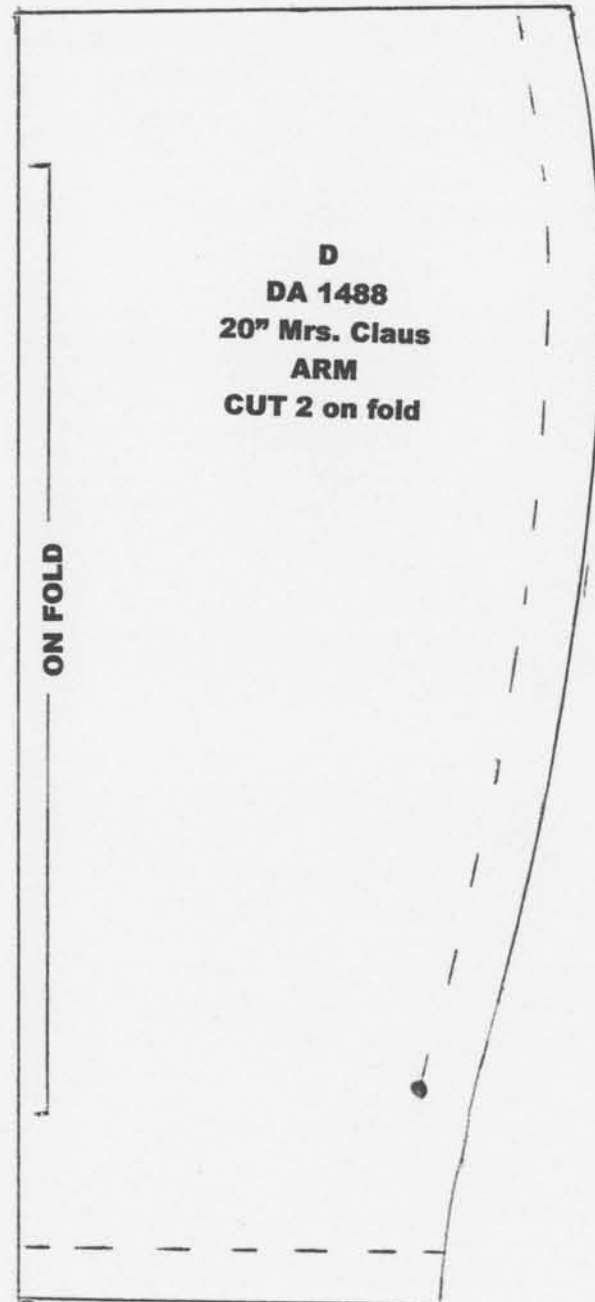
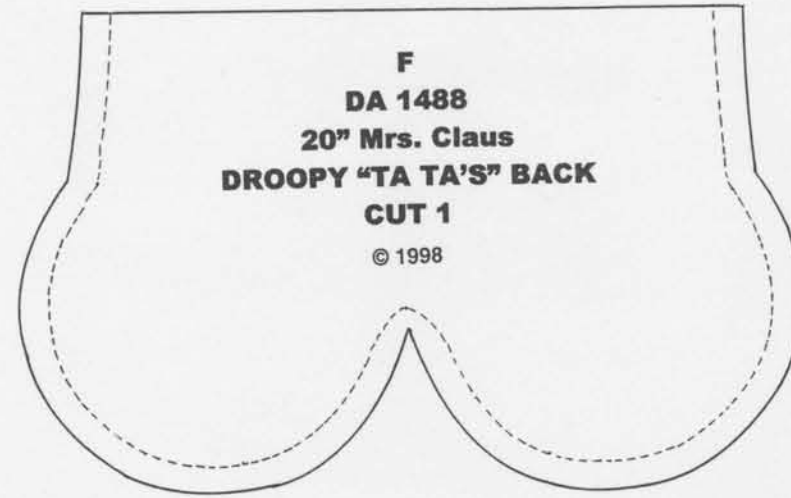
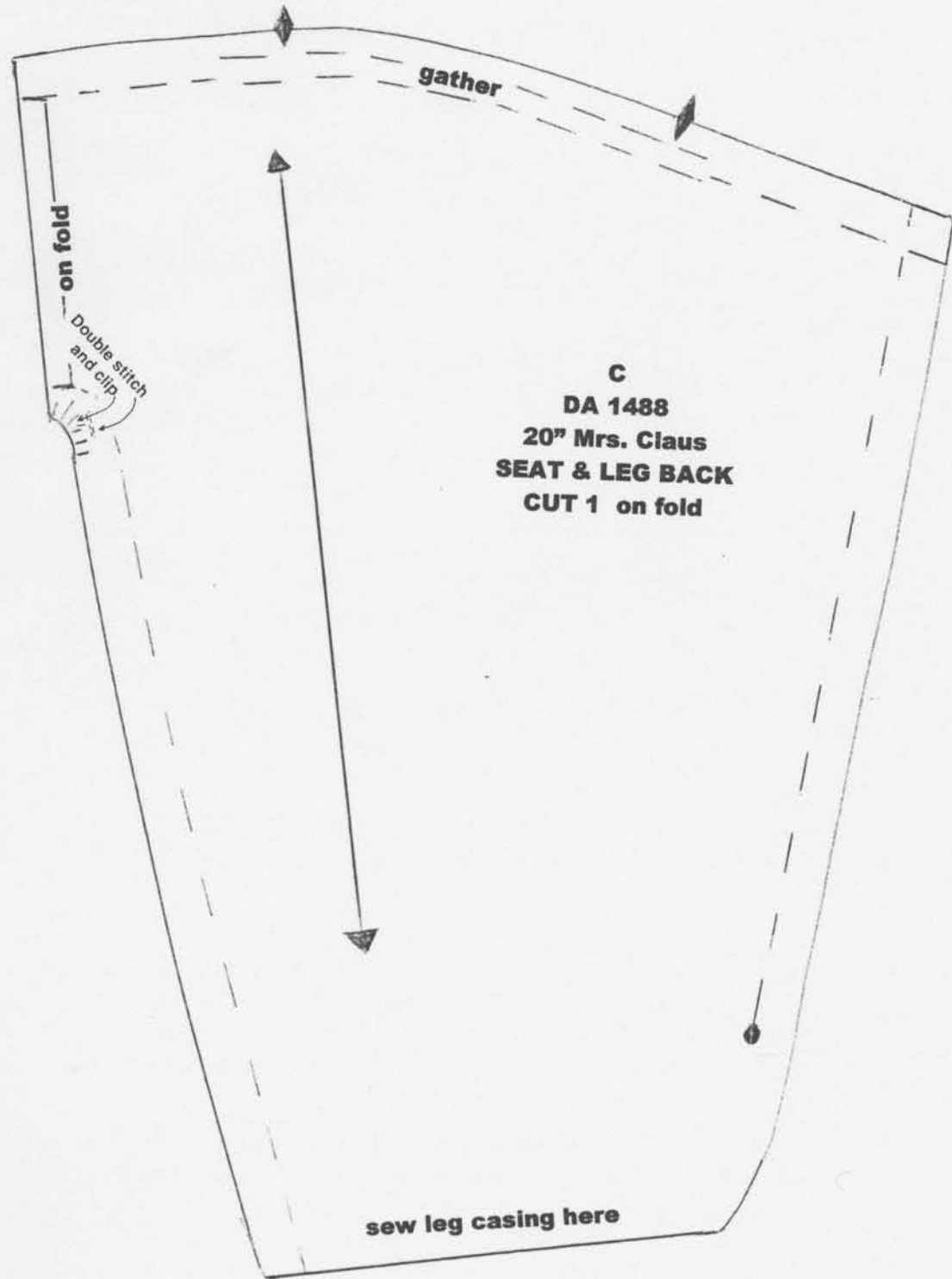
casing and mount head on the body. Folding the wire tails back into the body opening. Add more polyfil in the neck area if necessary, then close the body back opening with a whip stitch.

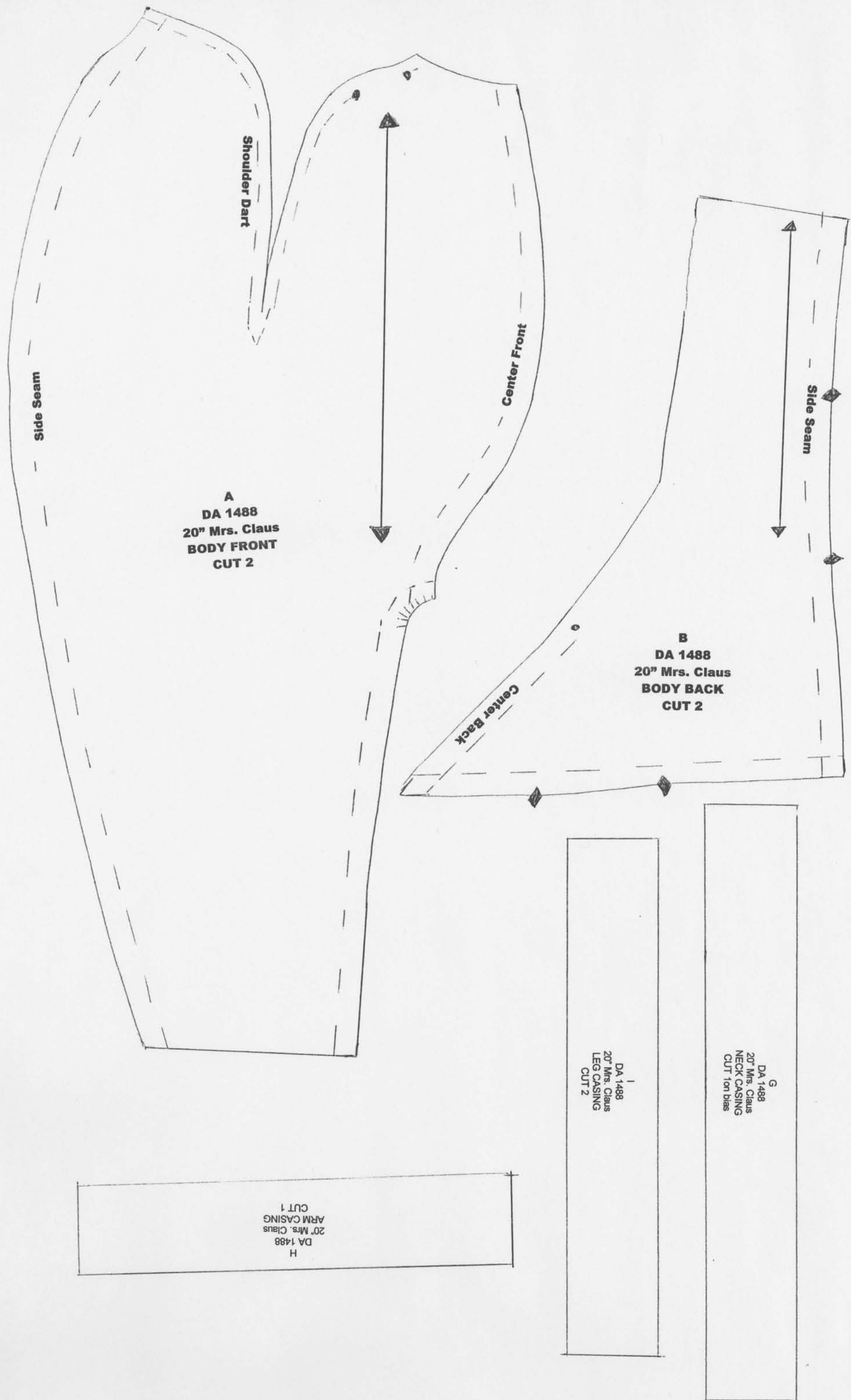
28. Fold under ends of the cloth arm and whip stitch to the shoulder near the neck. Arm is positioned properly when the wrist is even with the crotch.
29. Pour 1/8 cup pellets in each Ta Ta. Whip stitch the Ta Ta's to the body front. To position - measure down 1" from the top edge of the neck casing at center front.

This Pattern contains 9 pieces:

- A-- BODY FRONT
- B-- BODY BACK
- C-- SEAT & LEG BACK
- D-- ARM
- E-- DROOPY "TA TA'S" FRONT
- F-- DROOPY "TA TA'S" BACK
- G-- NECK CASING
- H-- ARM CASING
- I-- LEG CASING

PATTERN NUMBER DA 1488





A
DA 1488
20" Mrs. Claus
BODY FRONT
CUT 2

B
DA 1488
20" Mrs. Claus
BODY BACK
CUT 2

C
DA 1488
20" Mrs. Claus
NECK CASING
CUT 2

D
DA 1488
20" Mrs. Claus
LEG CASING
CUT 2

E
DA 1488
20" Mrs. Claus
ARM CASING
CUT 1

F
DA 1488
20" Mrs. Claus
NECK CASING
CUT 10% bias

G
DA 1488
20" Mrs. Claus
LEG CASING
CUT 10% bias

H
DA 1488
20" Mrs. Claus
ARM CASING
CUT 1

36" SANTA BODY
Copyright 1998

PATTERN NUMBER DA 1441

(Fits 36" Santa Head, Hands, Boots)

FABRICS & NOTIONS

- 1 1/2 yd. Muslin 45" Width - body
- White Iron-On Mending Patch (Cut 6 - 1" squares)
- 1 Pair Teddy Bear Joints 45mm - legs
- 2 Buttons 1/2"
- Dental Floss
- Soft Sculpture Needle
- Polyfil
- Doll Pellets
- Hot Glue Gun
- Hot Glue Sticks
- 4 Ft. Romex Wire 12/2 Gauge - arms
- Floral Wire 22 Gauge - binding porcelain to cloth body

READ ALL INSTRUCTIONS BEFORE CUTTING FABRIC

- A. Mark dots on wrong side of torso fronts and legs.
- B. Lay 2 of the leg pieces (1 right & 1 left) on your ironing board wrong side up.
- C. Iron a 1" square of iron-on mending patch directly over the marked dots.
- D. All seams are 1/4" unless otherwise indicated.

BODY CONSTRUCTION:

- 1. Right sides together, sew the body fronts together at the center front seam and the body backs at the center back seam.
- 2. Sew the front to the back at the side seams.
- 3. Bias neck piece - press under both long sides 1/4" then fold in the middle like bias tape. Place binding over the neck seam allowance and stitch to the neck. The bias piece ends will extend out longer than the neck.
- 4. Bias arm piece - fold and press as directed in Step 3. Place the casing over the end of each arm and sew in place. The bias ends will be longer than the width of the arm. Sew the long seam on each arm stopping at the dot. SEE PATTERN.
- 5. Sew the leg seams stopping at the dot. SEE PATTERN.
- 6. Turn under and sew leg casings.

BODY ASSEMBLY

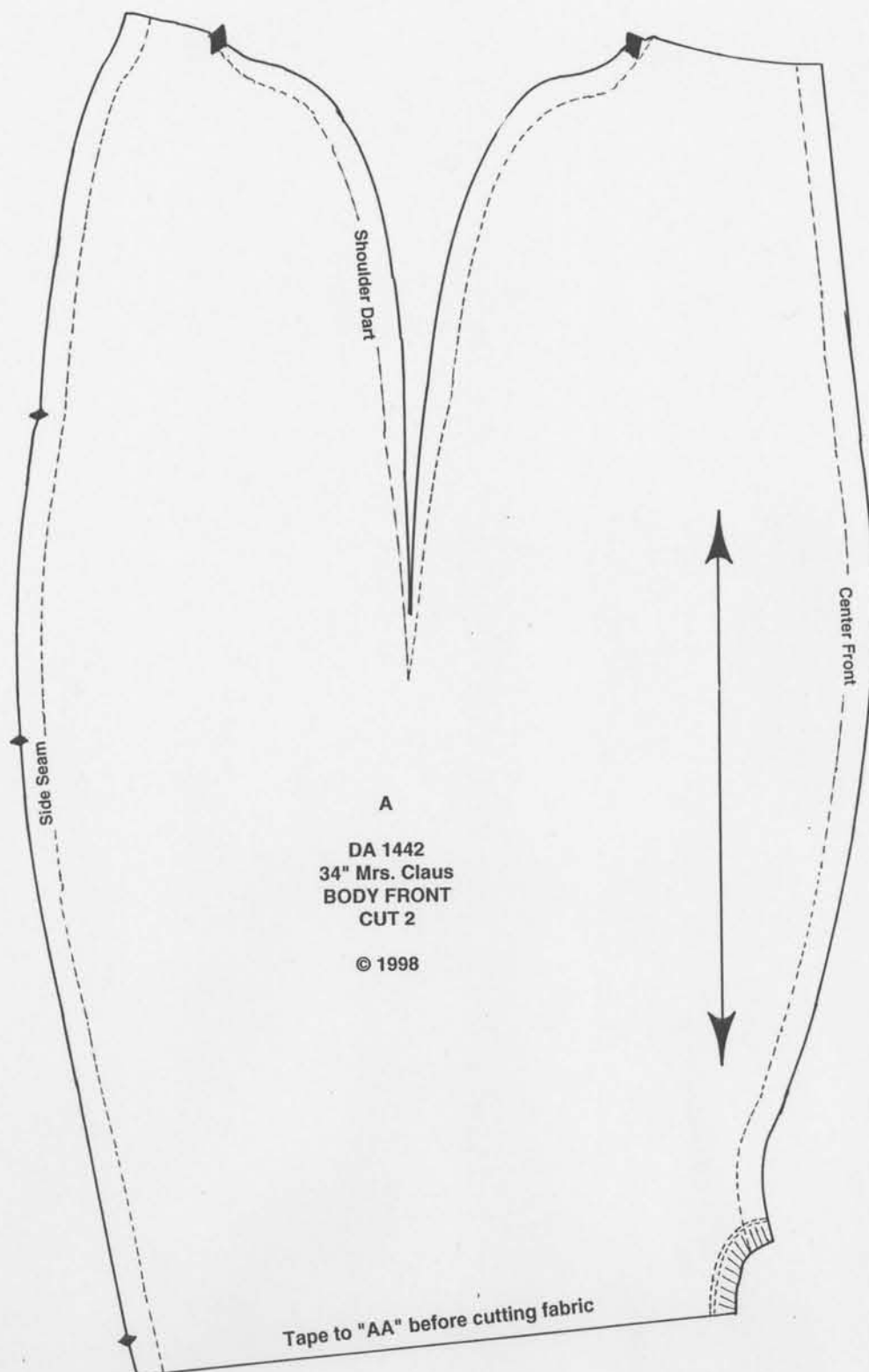
- 7. Pour pellets into the body up to the leg dots.
- 8. LEGS - Thread a soft sculpture needle with dental floss and knot the ends together. Push the needle through the mending patch on the body about 1/2" from the marked dot. Bring the needle out the opposite side of the body again 1/2" from the marked dot. Thread the needle through both eyes of a flat 1/2" button, taking the needle and floss back through patch near the hole previously pierced. Bring the needle out near the needle's first entrance. Thread the knotted end of the floss through one eye of the button and the needle through the other eye. Remove the needle from the floss. Grasp both ends of the floss and pull squeezing the buttocks. The length of the dental floss between the buttons will be approximately 9". Tie off with a double knot. Add a drop of glue to secure knot.

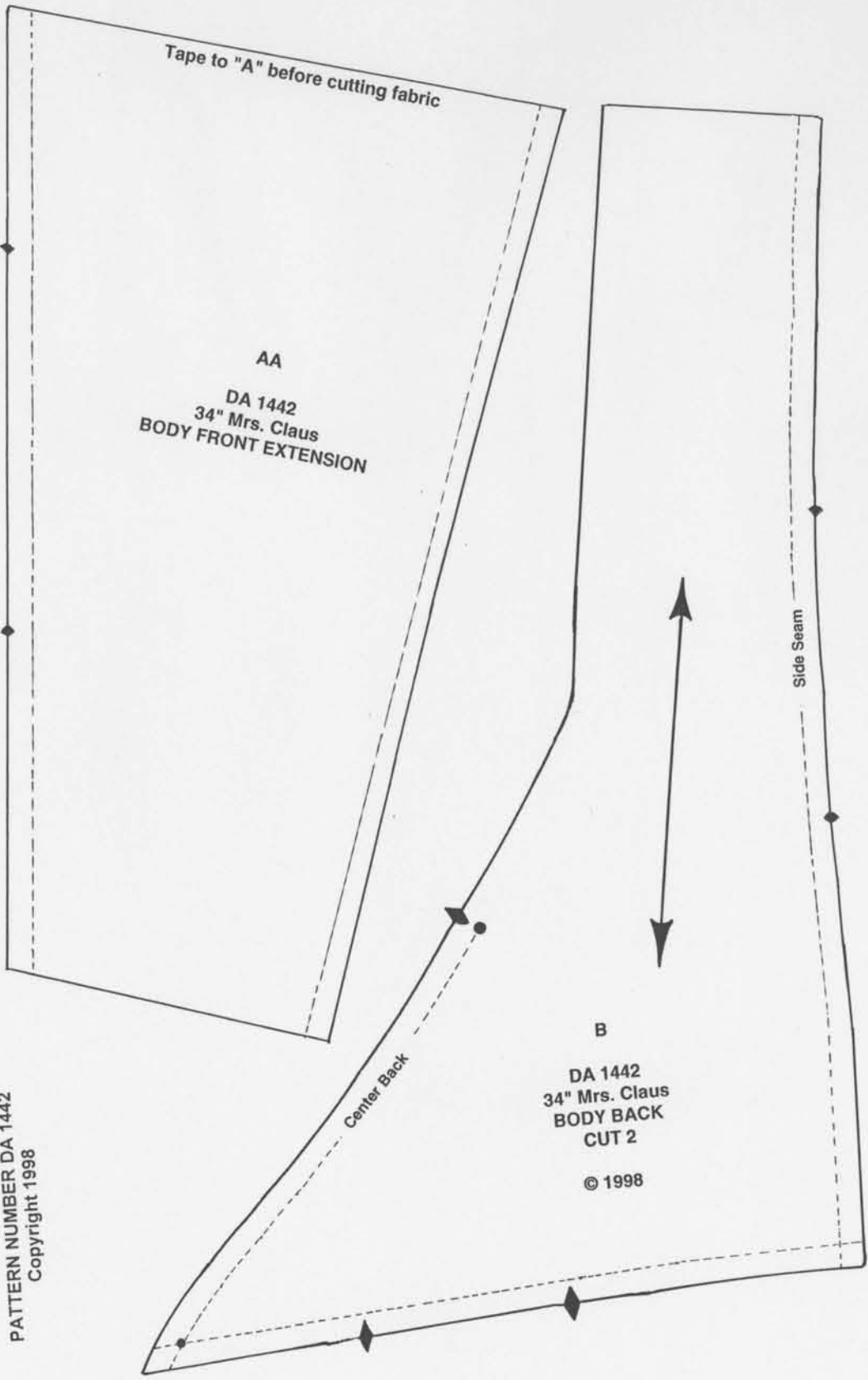
THE
DOLL INC
ARTWORKS
RT. 9 BOX 119
HWY 274
SEVEN POINTS, TX. 75143
TEL. 903-432-9426
FAX. 903-432-9502
ORDERS ONLY
800-886-3655

- 9. Snip an "X" just large enough for the shaft of the teddy bear joint to penetrate the body and also on the inner side of each leg.
- 10. Insert the joint with shaft inside each leg. Push shaft through the inner leg and into the body. Reaching inside the body, place a washer on the shaft. MAKE SURE THE LEGS ARE FACING THE CORRECT DIRECTION - then push and tighten a lock washer on the shaft.
- 11. Pour pellets into each boot to the line just above the ankle. Stuff the remaining area of the boot firmly with polyfil. Insert a length of 22 gauge wire into the leg casing.
- 12. Fill each leg with polyfil and tie boot onto the cloth leg. Push the wire tails into the cloth opening and bend over the boot top. Stuff polyfil into the cloth leg opening if needed.
- 13. Close the cloth leg opening with a hand stitch. Prepare both legs.
- 14. ARMS - Cut 2 lengths of 12 gauge Romex wire each 24" long. Bend one end on each wire under about 1/2". Place the bent end into each hand. Stuff with polyfil then add hot glue to the top 1/4" of the hand. Let set up.
- 15. Place a length of 22 gauge floral wire into each wrist casing and bind the porcelain hand to cloth arm. Bend the tails of the wire back into the cloth opening and over the end of the hand.
- 16. Loosely stuff the arms with polyfil.
- 17. Firmly stuff the body cavity with polyfil up to the arm area.
- 18. Cut a slit at each arm dot just large enough for the Romex wire to penetrate. Insert wire from each arm into the body. Measure and mark each arm wire 5 1/2" from the end. Bend the wire down at the 5 1/2" mark. Wrap the bent ends of the wires together with strapping tape. Allow the taped ends to extend down in the stuffing. Finish stuffing the body firmly to the top.
- 19. After mounting Santa's eyes and allowing them time to completely dry, stuff the head with polyfil.

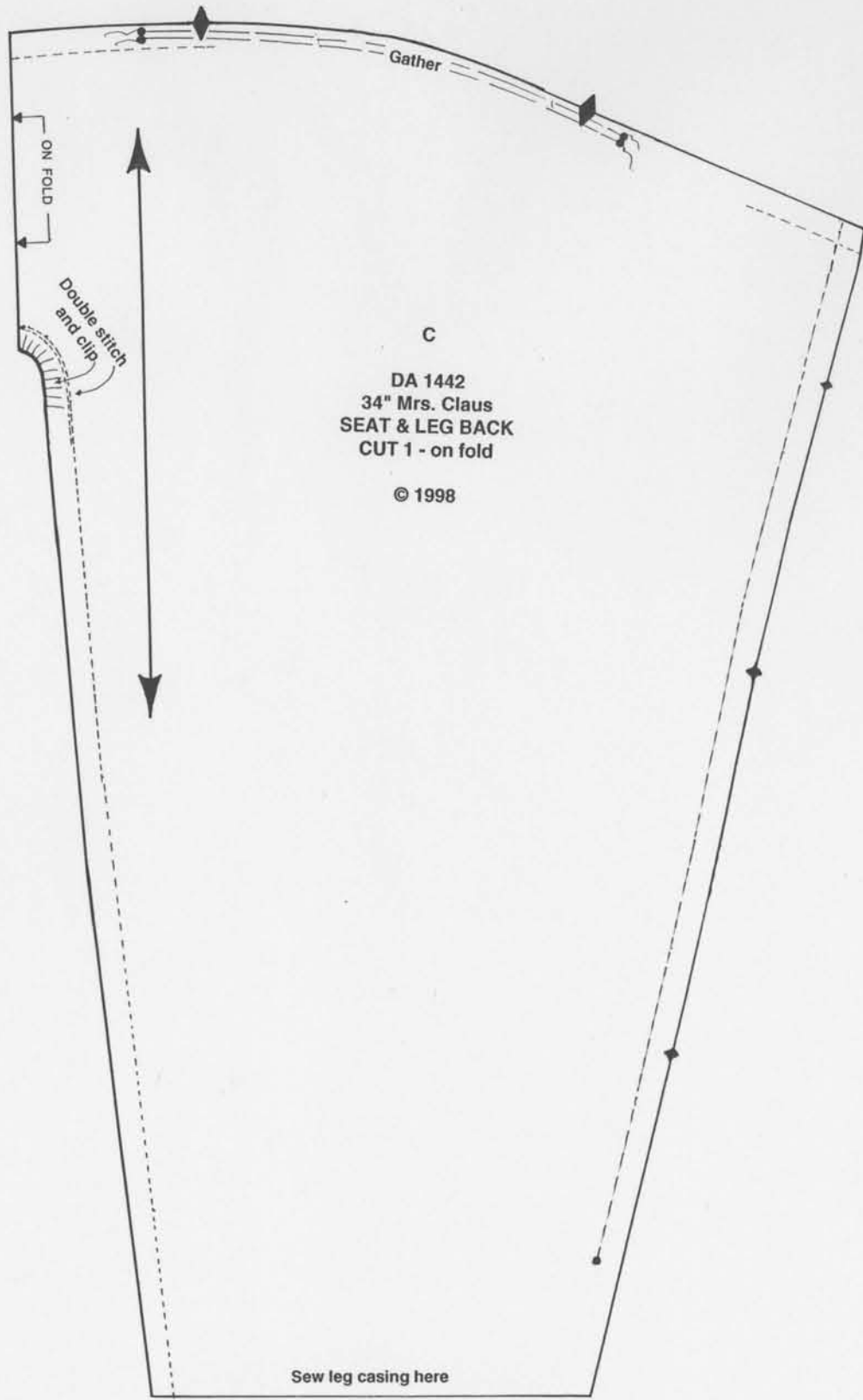
- 20. Insert a length of 22 gauge wire into the neck casing. Tie head on the body. Fold wire tails back into the body and hand stitch the body opening closed.

This pattern contains 9 pieces:
A - - BODY FRONT
AA- BODY FRONT - EXTENSION
B - - BODY BACK
BB - BODY BACK - EXTENSION
C - - NECK CASING
D - - ARM
DD - ARM - EXTENSION
E - - ARM CASING
F - - LEG





PATTERN NUMBER DA 1442
Copyright 1998



PATTERN NUMBER DA 1442
Copyright 1998

