

## 28" LAUREN

**COPYRIGHT 1999**

( Fits 28" Tom Sawyer Shoulder plate,  
28" Long Blythe Arms, 28" Right  
Straight, Left Bent Leg)

### FABRICS & NOTIONS

- 1 yd of Organza
- 1 yd of taffeta
- 1 yd of lining
- 5 large roses
- 4 small snaps
- 1 1/2 yd of horsehair braid

### READ ALL INSTRUCTIONS BEFORE CUTTING FABRIC

#### NOTES:

1. Everyone stuffs dolls differently. Please try costumes on dolls during construction to insure proper fit.
2. WRST, With Right Sides Together,
3. All Seams are 1/4" unless otherwise indicated.
4. Tape pattern pieces "E" and "EE" together before you cut the fabric.
5. For professional results, clip seams at curves and press frequently during construction.

### DRESS CONSTRUCTION

1. WRST, sew the Center Front and the Side Front together.
2. WRST, sew the Center Back and the Side Back together.
3. WRST, sew the side seams together.
4. WRST, sew the shoulder seams together.
5. Sew together the lining the same as steps 1-4.
6. WRST, sew the bodice and the lining together down the back.
7. Turn and press the back seams.
8. Baste the taffeta and the lining together at the neck.
9. Take pattern "F" and press one long side with a 1/4" seam, then press it in half.
10. Sew the side that is not pressed to the bodice neck WRST.
11. Turn the 1/4" press side in to the lining and hand sew it at your stitching line.
12. Set the bodice aside.
13. Put a gathering stitch at the bottom side of the sleeves, to fit the sleeve band.

### PATTERN DA 1473 BODY PATTERN DA 1114

MOLD AVAILABLE FROM:

**THE  
DOLLING  
ARTWORKS**

37104 HWY CC  
LATHAM, MO 65050  
TEL. 660-458-6285  
ORDERS ONLY  
800-886-3655

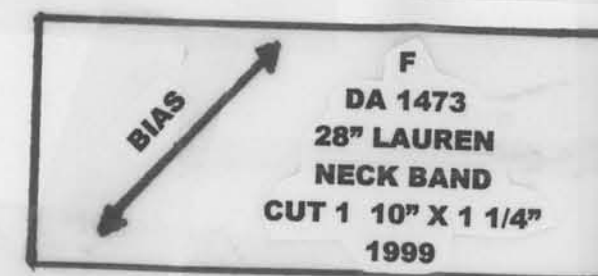
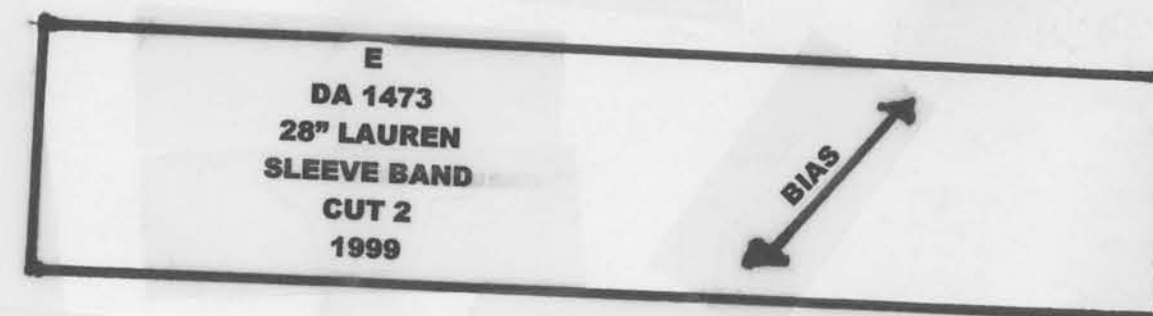
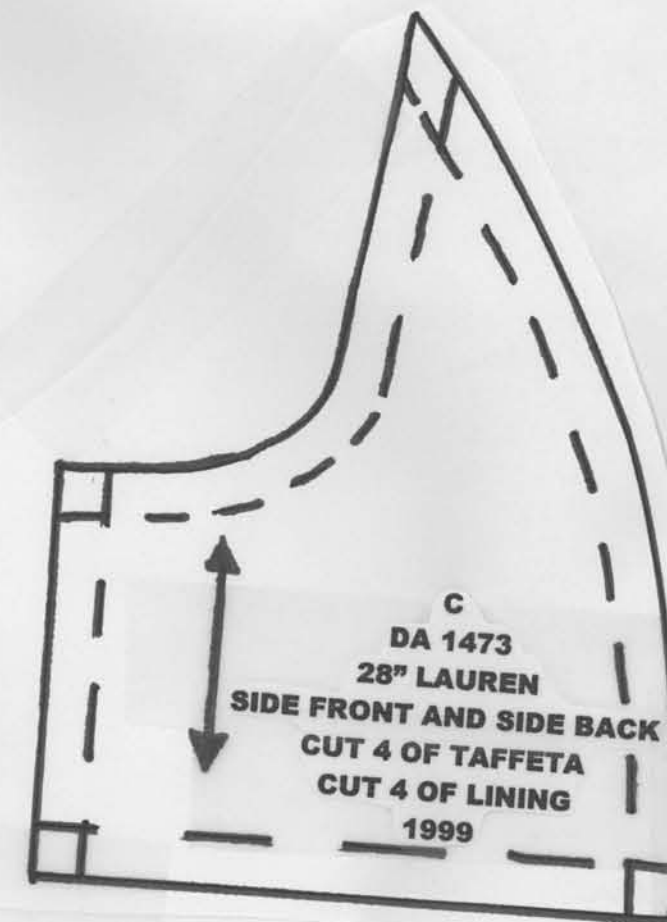


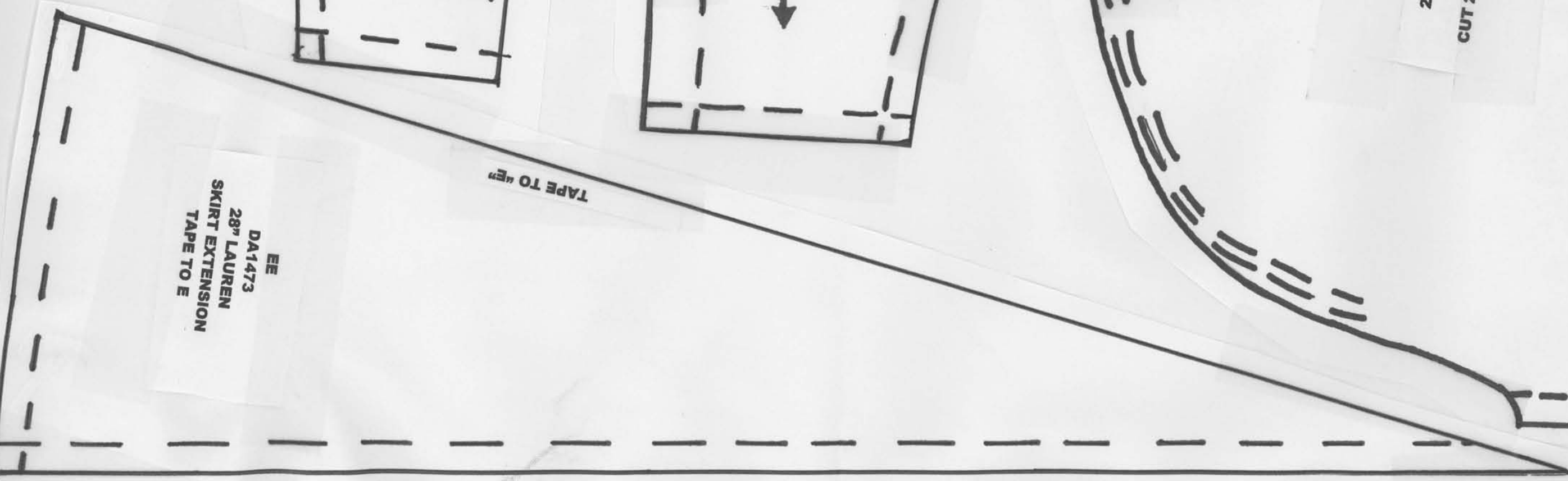
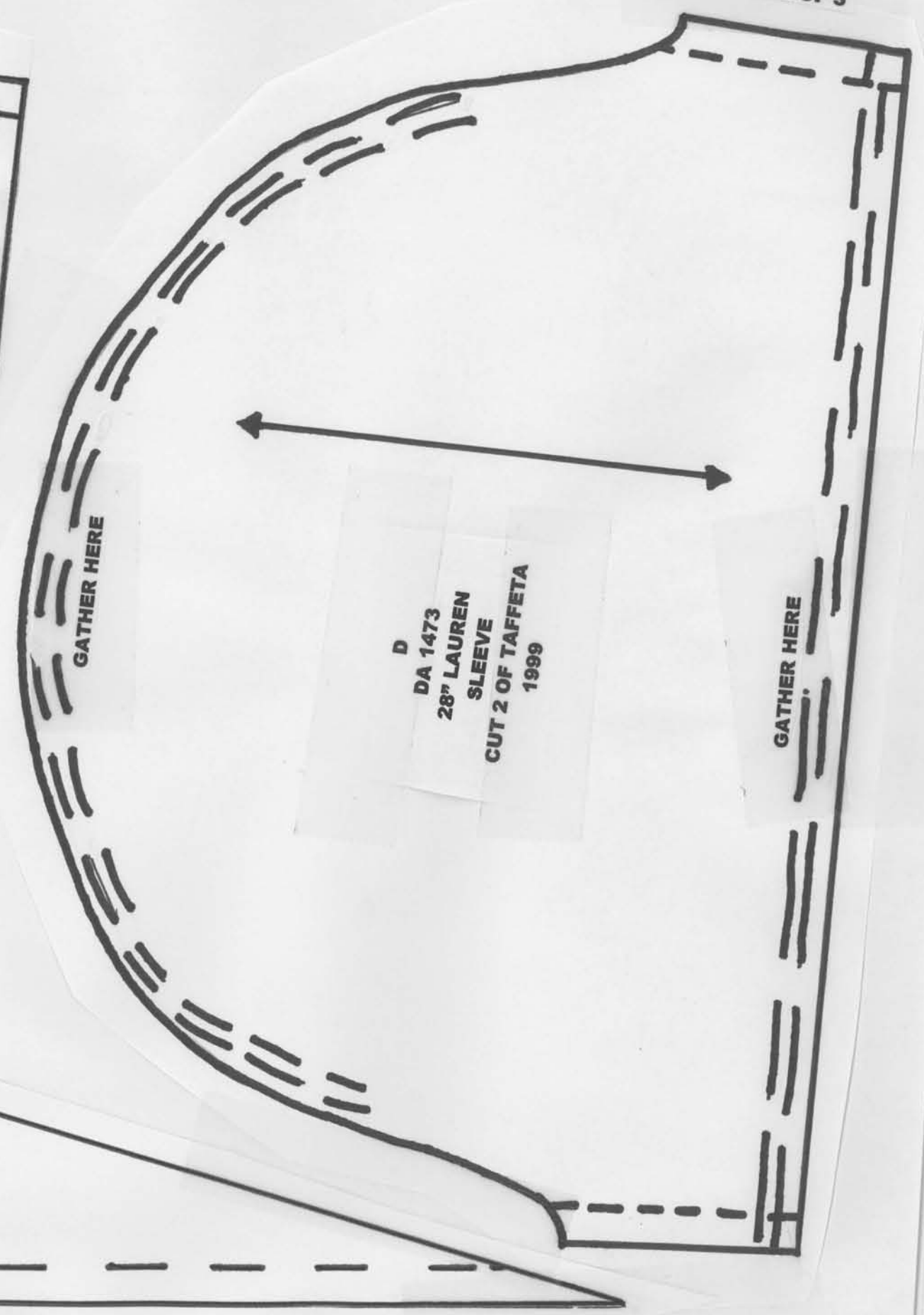
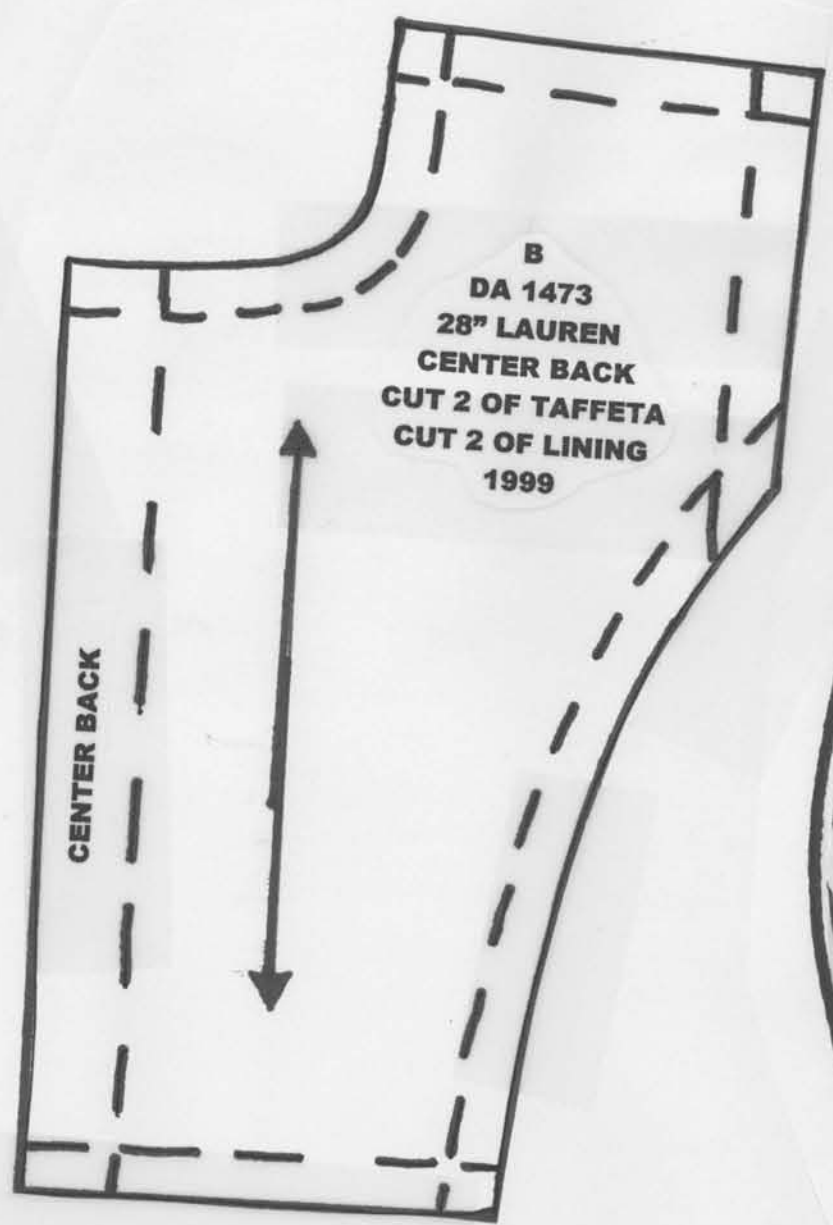
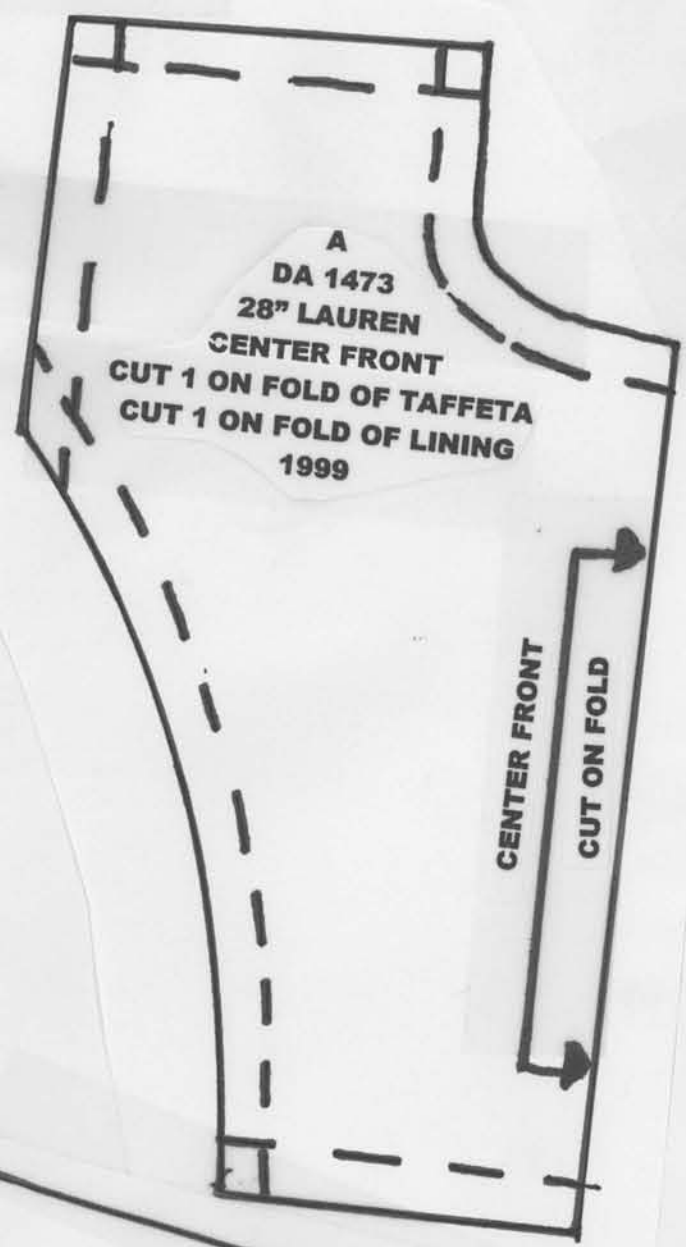
www.dollartworks.com

14. Do the same to the sleeve bands as you did to the neck band (Steps 7-9).
15. WRST, sew the seam on the under side of the sleeve.
16. Put a gathering stitch at the top side of the sleeve.
17. Fit the sleeve to the bodice, WRST sew the sleeve in to the bodice and finish the seam with a zigzag or surge.
18. Set the bodice aside.
19. WRST, sew the skirt together at the side seam, all of the layers have to be sewn separate.
20. Put a rolled hem in the lining and the taffeta skirt.
21. In the Organza you need to put in a horsehair braid hem.
  1. On the right side of the fabric, sew the horsehair braid, with a 1/8" seam.
  2. Turn the horsehair braid to the inside of the dress and top stitch very close to the bottom of the dress.
  3. You may need to hand sew the top of the horsehair braid to hold it up.
22. Cut down the center back fold 4", for the back opening and finish off the cut edge with a rolled hem or a zigzag.
23. Baste all of the skirt layers together at the waist.
24. Put a gathering stitch at the waist of the skirt and pull it to fit the bodice.
25. Sew the skirt to the bodice together and finish off the seam.
26. Make a tube out of the Pattern "G".
27. Hand sew the tube to the waist at the side seam and turn back on the center back to finish off the tube.
28. Hand sew the roses to the front of the dress, on to the waist tube and though the bodice.
29. The back of the dress is finished off with 4 small snaps down the back of the dress.

This pattern contains 9 pieces. They are as follows:

- A- Center Front
- B- Center Back
- C- Side front and back
- D- Sleeve
- E- Skirt front and back
- EE- Skirt Extension
- F- Neck Band
- G- Waist Band
- H- Sleeve Band





GATHER HERE

CENTER FRONT  
CENTER BACK

CUT ON FOLD

E  
DA 1473  
28" LAUREN  
SKIRT FRONT AND BACK  
CUT 2 ON FOLD OF TAFFETA  
CUT 2 ON FOLD OF LINING  
CUT 2 ON FOLD OF ORGANZA  
1999

TAPE TO "EE"