

24" ANNETTE & OLIVIA

Copyright 1998

(Use 24" 24" TT Sh/Pl., 24" TT Arms, 24" TT Sitting Legs - Annette)
(Use 24" TT Arms, 24" TT Sitting Legs - Olivia)

FABRICS & NOTIONS

ANNETTE - View 1

- 1 Yd. Cotton Print 45" Width - dress, panties
- 3/8 Yd. Ecru Batiste 45" Width - dress front yoke, slip
- 5/8 Yd. Ecru Lace Insertion 1" Width - dress yoke
- 2 7/8 Yds. Ecru Flat Lace Edging 5/8" Width - dress hem, sleeves, panties
- 1 1/4 Yds. Ecru Flat Lace Edging 1 3/4" Width - slip
- 7/8 Yd. Rose Silk Ribbon Braid 1/4" Width - yoke trim
- 1 1/4 Yds. Braided Elastic 1/8" Width - panties

OLIVIA - View 2

- 5/8 Yd. Voile Print 45" Width - dress
- 5/8 Yd. Cream Batiste 45" Width - slip, panties
- 5/8 Yd. Ecru Lace Insertion 1" Width - dress yoke trim
- 1 5/8 Yds. Ecru Flat Lace Edging 1" Width - sleeves, skirt hem
- 1 Yd. Ecru Embroidered Lace Edging 1 3/4" Width - panties
- 7/8 Yd. Braided Elastic 1/8" Width - panties, sleeves
- 1 1/4 Yds. Ecru Silk Ribbon Braid 1/4" Width - yoke trim

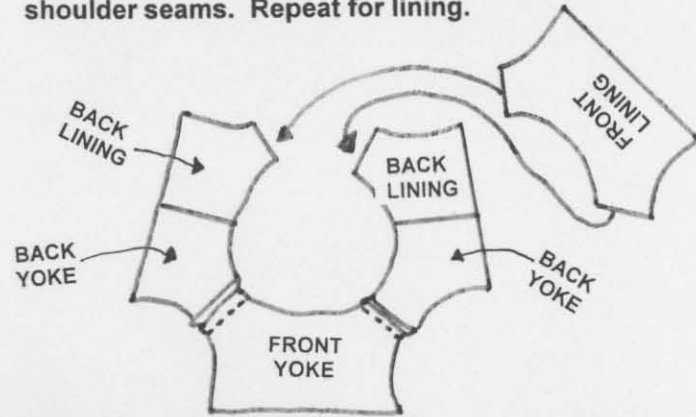
READ ALL INSTRUCTIONS BEFORE CUTTING FABRICS & TRIMS

- A. All seams are 1/4" unless otherwise indicated.
- B. All pieces are sewn with right sides together unless otherwise indicated.
- C. View 1 and View 2 both use the same skirt armhole template and panties pattern pieces.

VIEW 1 - DRESS CONSTRUCTION:

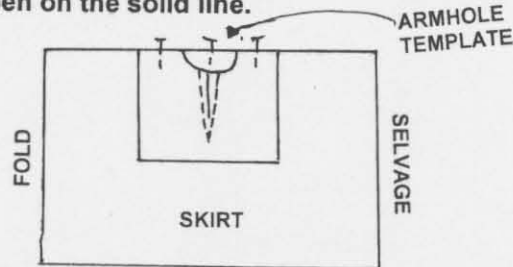
(SLEEVE ELASTIC 5")

- 1. Staystitch the lace and batiste front yoke pieces together around the outer edges. They will now be considered one fabric.
- 2. Sew the front yoke to the back yokes at the shoulder seams. Repeat for lining.



- 3. Sew the yoke lining to the yoke around the neck. Clip seam, turn and press.
- 4. Cut 1 dress skirt 43" x 10 1/2". Cut 1 slip skirt 43" x 8". Sew 1 3/4" lace edging to the slip skirt bottom using heirloom sewing technique. Fold each skirt in half. Measure over 10 3/4" from the fold and mark with a pin. Position armhole template at the top edge of the skirt. The solid line of the armhole dart should line up with the pin at the 10 3/4" mark. Pin

template to skirt and cut out armholes. Cut dart open on the solid line.



- 5. Sew two rows of gathering stitches across the top of the skirt. Pull up gathers to fit the front yoke. Pin and sew skirt front to yoke front leaving the lining free.
- 6. Turn under the lining edge 1/4" and whip stitch to the yoke and skirt seam.
- 7. Pull up gathers on the skirt backs to fit the yoke backs. Turn under each dress skirt center back 1" for center back facings. Pin and sew skirt backs to the yoke backs leaving the yoke linings free.
- 8. Turn under the lining edge 1/4" and whip stitch to the yoke and skirt seam. Prepare both backs.
- 9. Sew a 1/8" hem on each lower sleeve.
- 10. Position 1" flat lace on top of each sleeve with the scalloped edge of the lace even with the sleeve hem, topstitch lace to sleeve on the lace heading.

PATTERN NUMBER DA 1456
BODY PATTERN DA 1362

THE
DOLLING
ARTWORKS
RT. 9 BOX 119
HWY 274
SEVEN POINTS, TX. 75143
TEL. 903-432-9426
FAX. 903-432-9502
ORDERS ONLY
800-886-3655

- 11. Zigzag 1/8" elastic to each sleeve. See Pattern For Placement.
- 12. Sew two rows of gathering stitches on the sleeve caps. See Pattern For Placement.
- 13. Pull up gathers to fit the armholes, pin and set sleeves.
- 14. Sew the arm seams and the skirt side darts.
- 15. Turn under and sew a 1/4" hem on the skirt. Top stitch 5/8" lace on the hem edge.
- 16. Sew snaps to cent back opening.

PANTIES CONSTRUCTION:

(Leg Elastic 8") (Waist Elastic 15")

- 17. Sew center front seam and center back seam.
- 18. Zigzag 1" flat lace to the legs using the heirloom technique instructions. EXCEPTION - For View 2 use 1 3/4" embroidered lace.
- 19. Zigzag 1/8" elastic to each leg. See Pattern For Placement.
- 20. Sew leg inseams catching elastic ends in the seams.
- 21. Turn under and sew the waist casing leaving an opening to insert 1/8" elastic. Lap the elastic ends one over the other and stitch together.
- 22. Close the casing with a machine stitch.

SLIP CONSTRUCTION : View 1

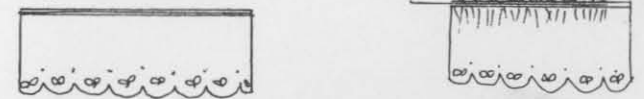
- 23. Sew front and back bodice together at the shoulder seams. Repeat for lining.
- 24. Sew lining to bodice at the neck and armholes. Trim seams to 1/8", turn and press. To turn, pull the backs through the shoulders.
- 25. Cut armholes in the skirt using same procedure as in Step 4.
- 26. Follow Steps 5 and 6.
- 27. Pull up gathers on skirt backs to fit the yoke backs. Turn under each skirt center back 3/8". Pin and sew skirt backs to the yoke backs leaving the yoke lining free.
- 28. Turn under lining edge and whip stitch to bodice and skirt seam. Prepare both backs.
- 29. Zigzag 1 3/4" wide lace on skirt. See Heirloom Technique Instructions.
- 30. Sew center back seam of skirt using 3/8" seam allowance.
- 31. Sew snaps on backs for closures.

VIEW 2 - DRESS CONSTRUCTION:

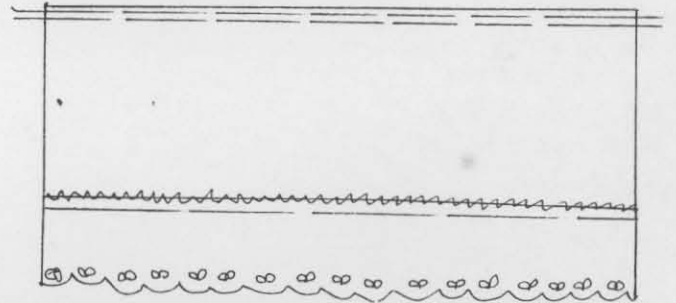
- 32. Follow Step 2.
- 33. Follow Step 3. See Pattern Piece.
- 34. Follow Step 4(omit slip) through Step 8.
- 35. Sew 1" lace insertion to the yoke neckline. See yoke back for placement of lace at back.
- 36. Zigzag 1" flat lace to each sleeve edge using the heirloom technique instructions.
- 37. Sew two rows of ease stitches on the sleeve caps. See Pattern For Placement.

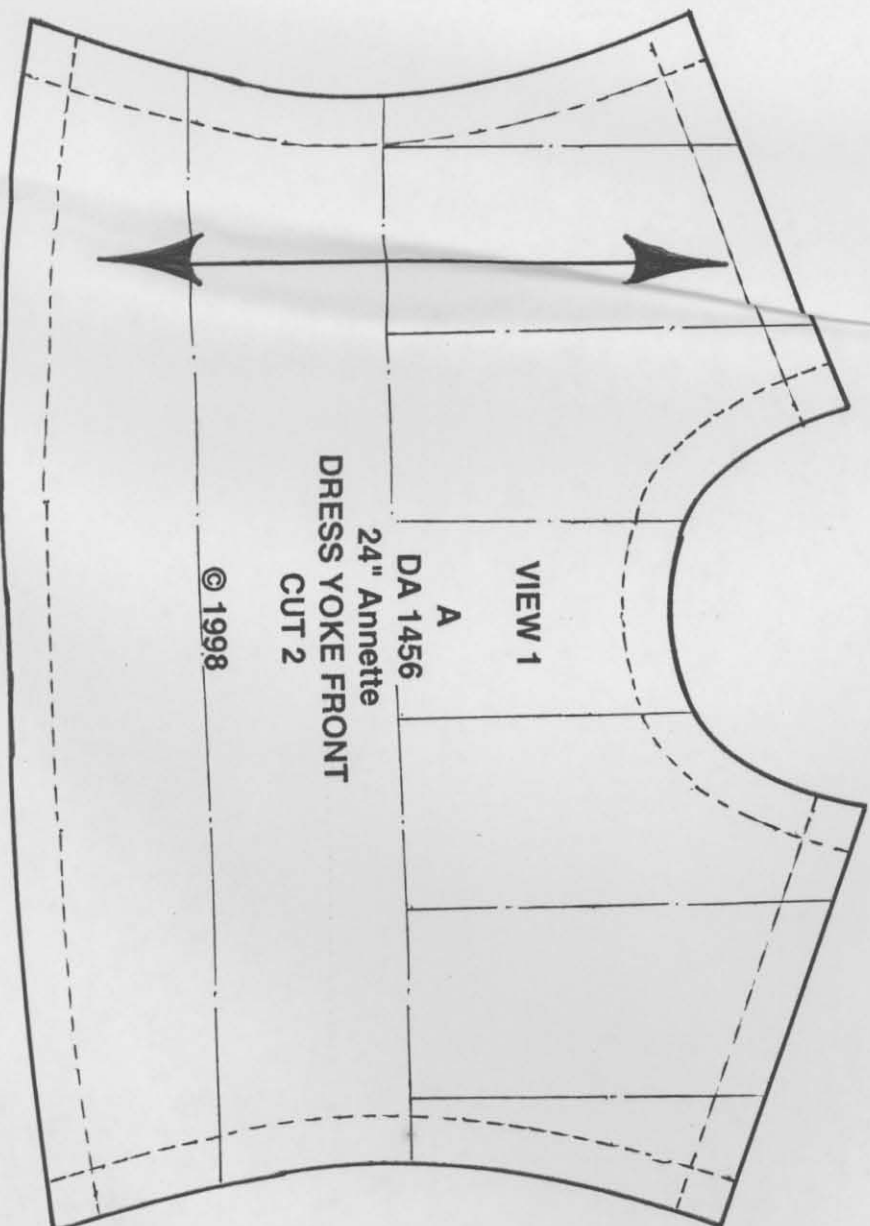
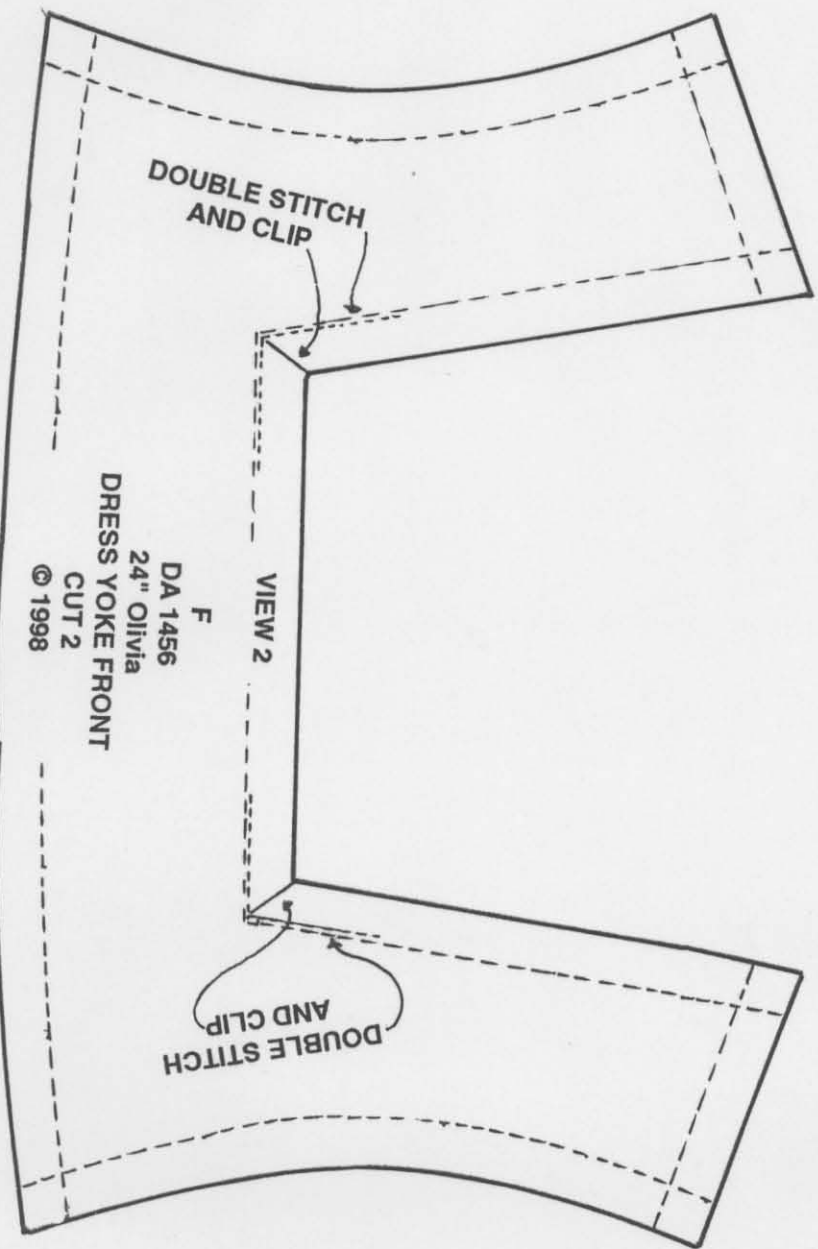
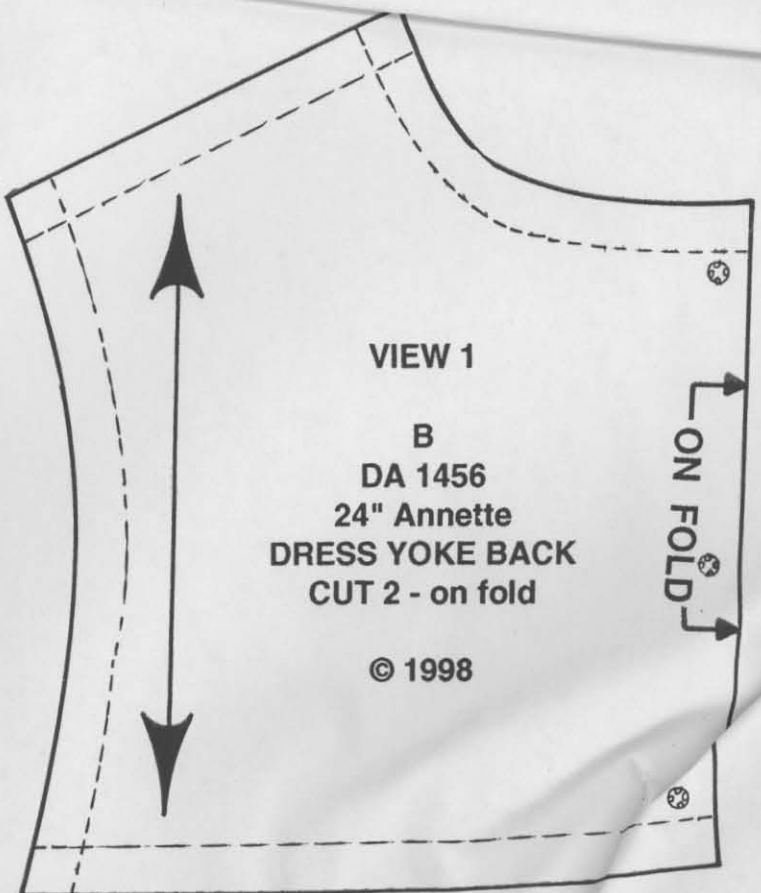
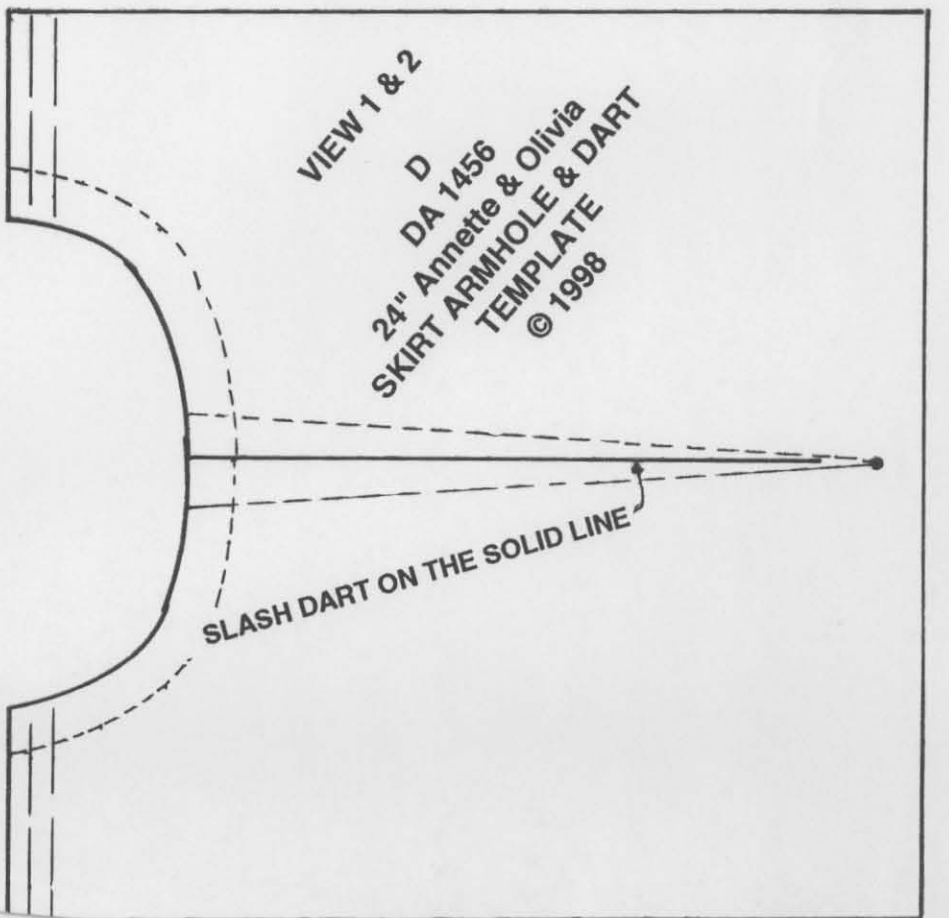
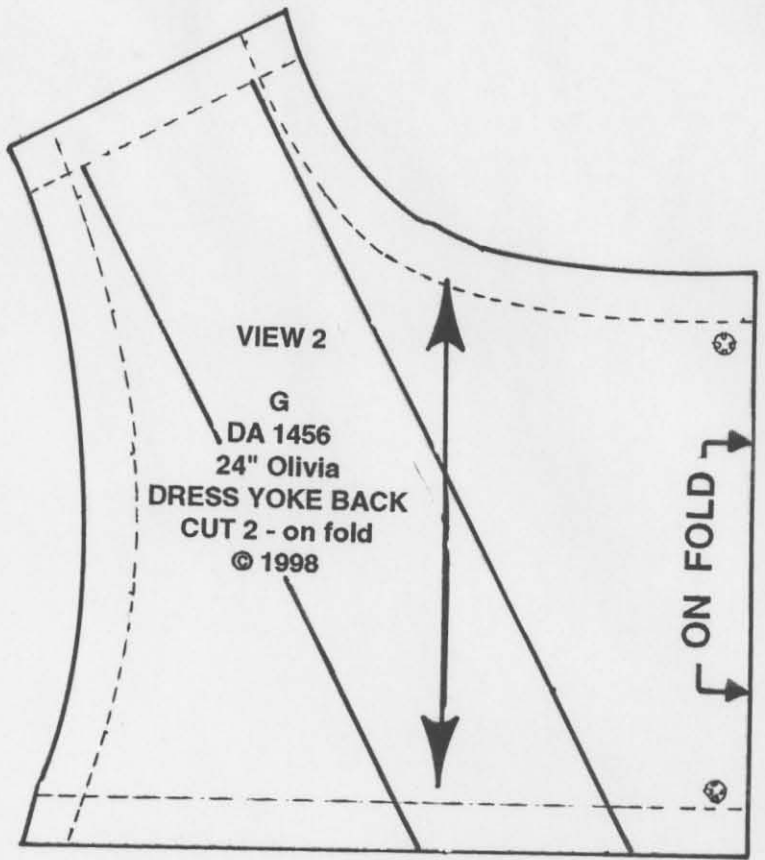
- 38. Pin and set sleeves to armholes.
 - 39. Follow Step 14.
 - 40. Zigzag 1" flat lace to the skirt bottom edge according to heirloom technique instructions.
 - 41. Turn under a 1/2" hem and stitch in place with a straight stitch. Lace should show about 1/2" from beneath the skirt hem. Add snaps to dress back opening.
 - 42. Follow Step 17 through Step 22.
- This pattern contains 9 pieces:
A -- DRESS YOKE FRONT - VIEW 1
B -- DRESS YOKE BACK - VIEW 1
C -- SLEEVE - VIEW 1
D -- SKIRT ARMHOLE TEMPLATE
E -- PANTIES FRONT AND BACK
EE - PANTIES FR. & BA. EXTENSION
F -- DRESS YOKE FRONT - VIEW 2
G -- DRESS YOKE BACK - VIEW 2
H -- SLEEVE - VIEW 2

LACE EDGING: Has one decorative edge and one straight edge. There is a heavy thread along the heading of the straight edge, which may be pulled to gather the lace.

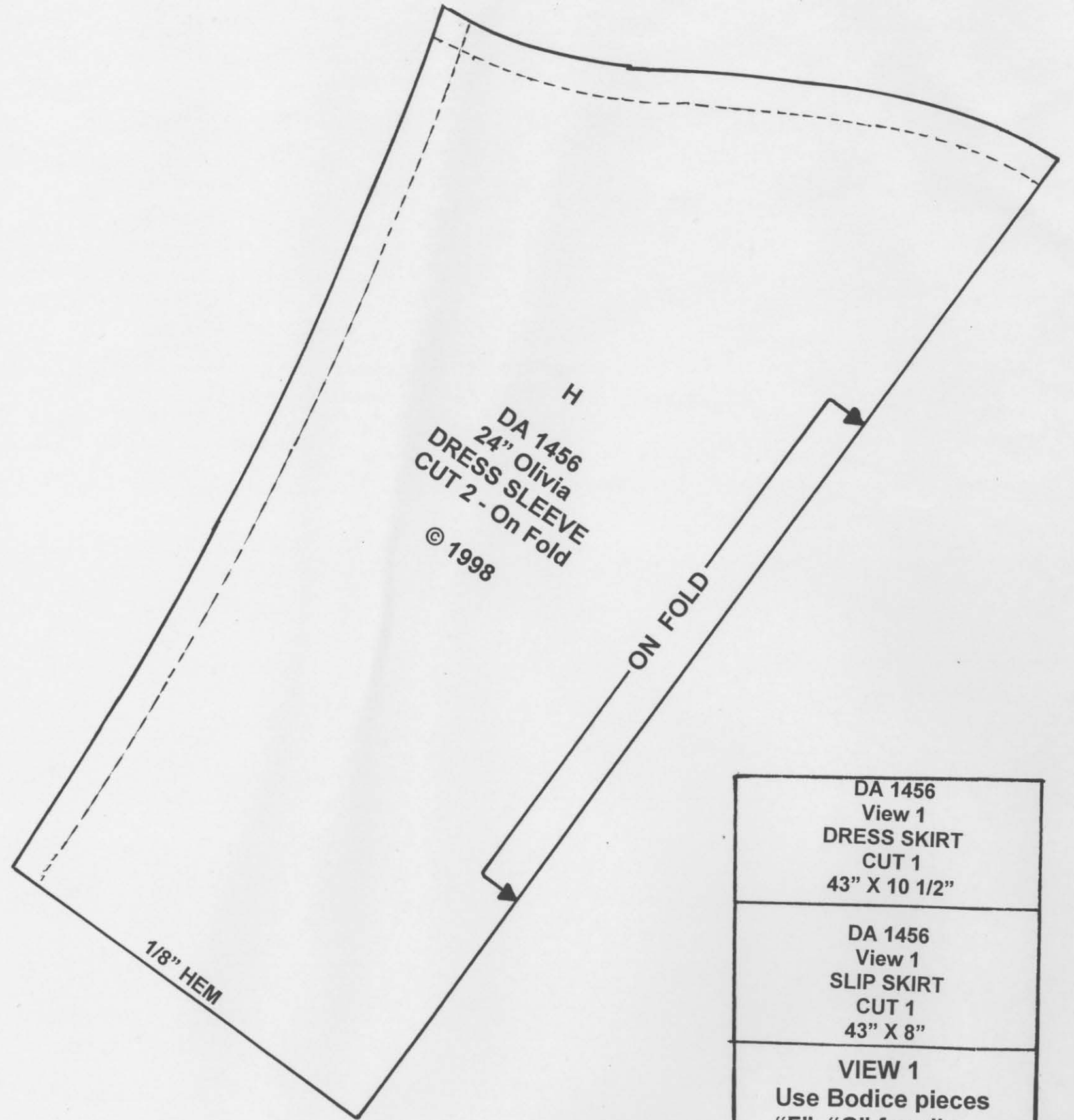
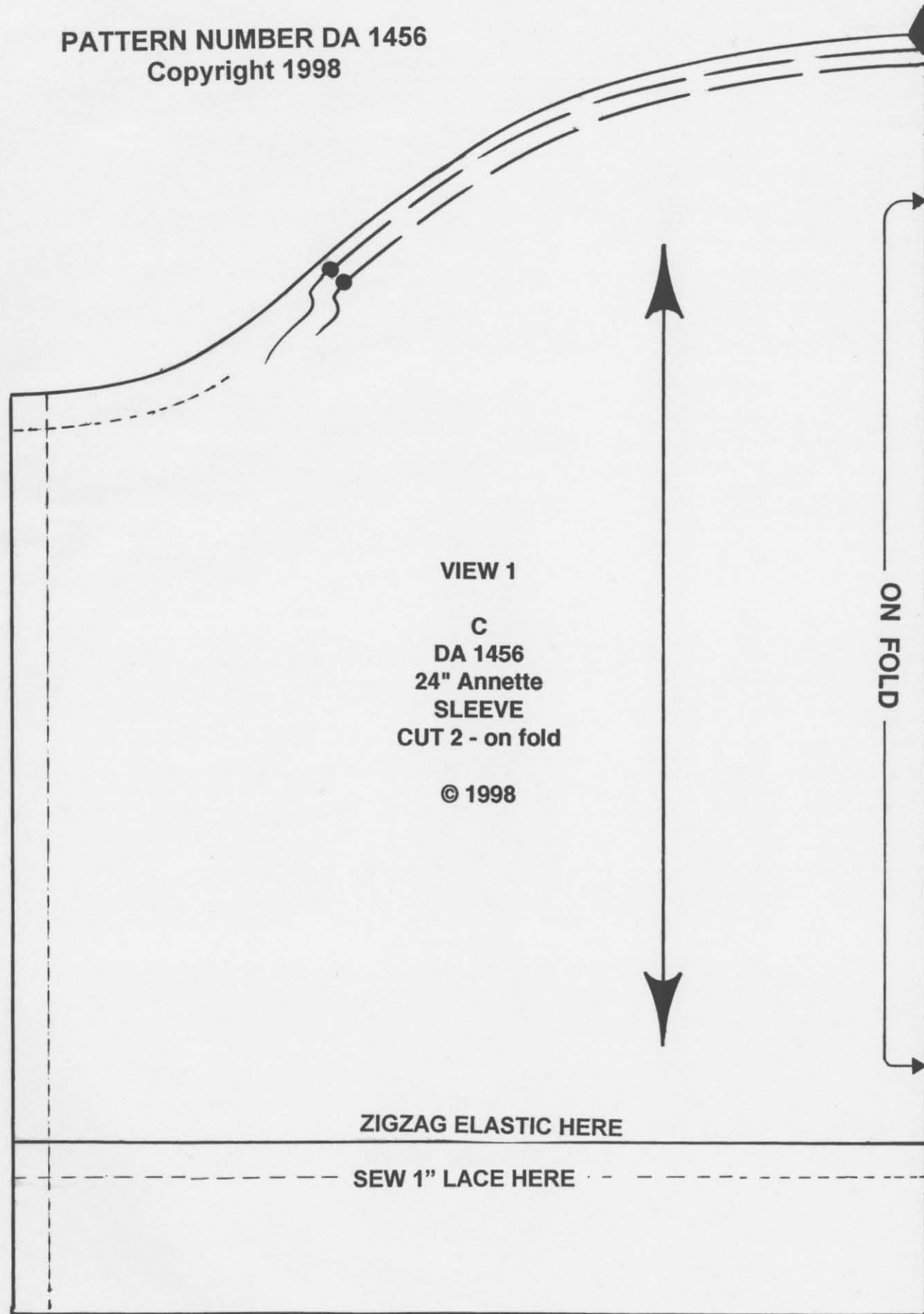


HEIRLOOM TECHNIQUE: To Finish Skirt Edge:
Lay flat lace on top of the skirt edge, with the top edge of the lace heading about 1/8" above the skirt edge. With a narrow zigzag stitch, sew along straight edge of lace. Press excess fabric to the wrong side of skirt section (away from lace) then zigzag again over previous stitching. Trim away any excess fabric.

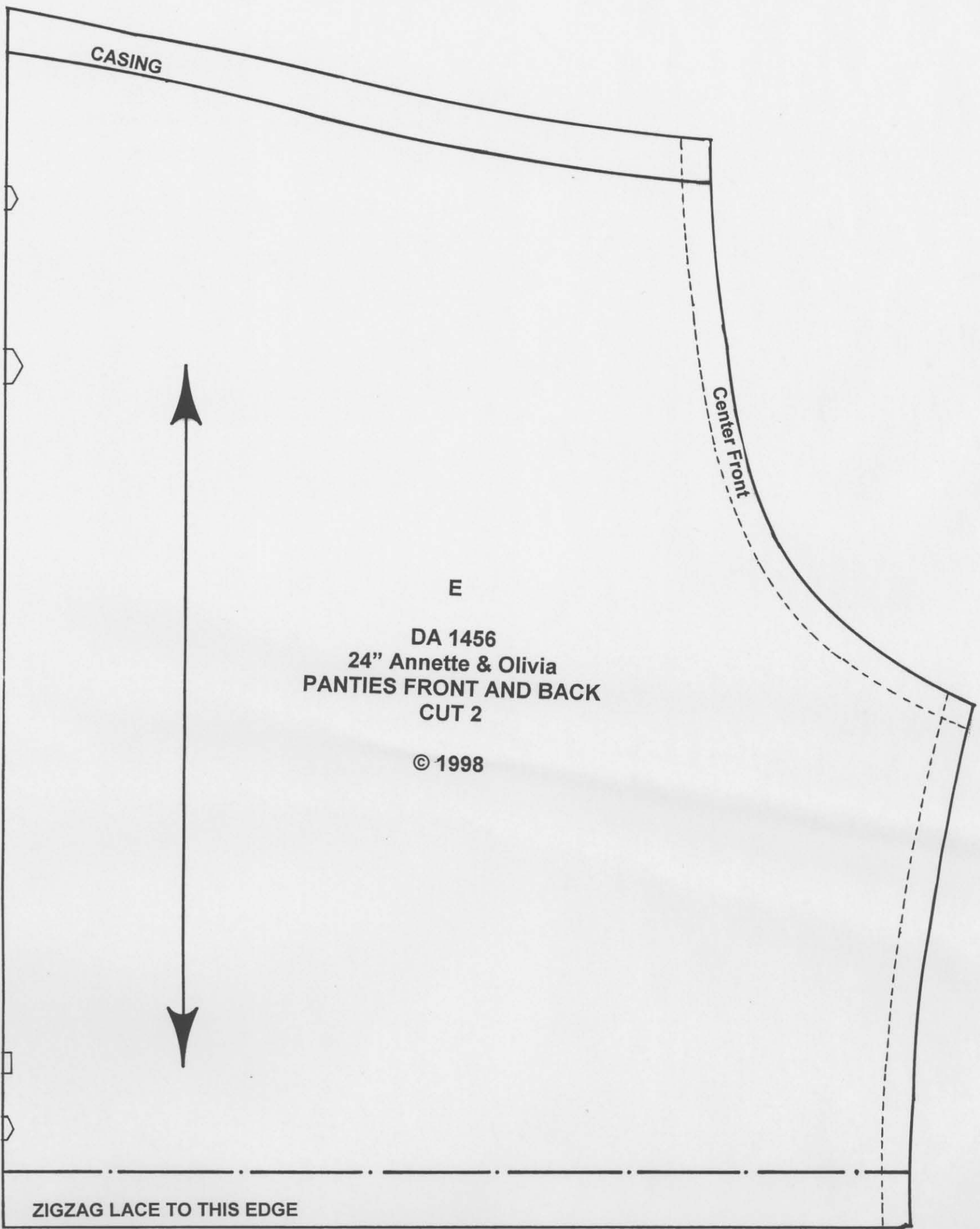


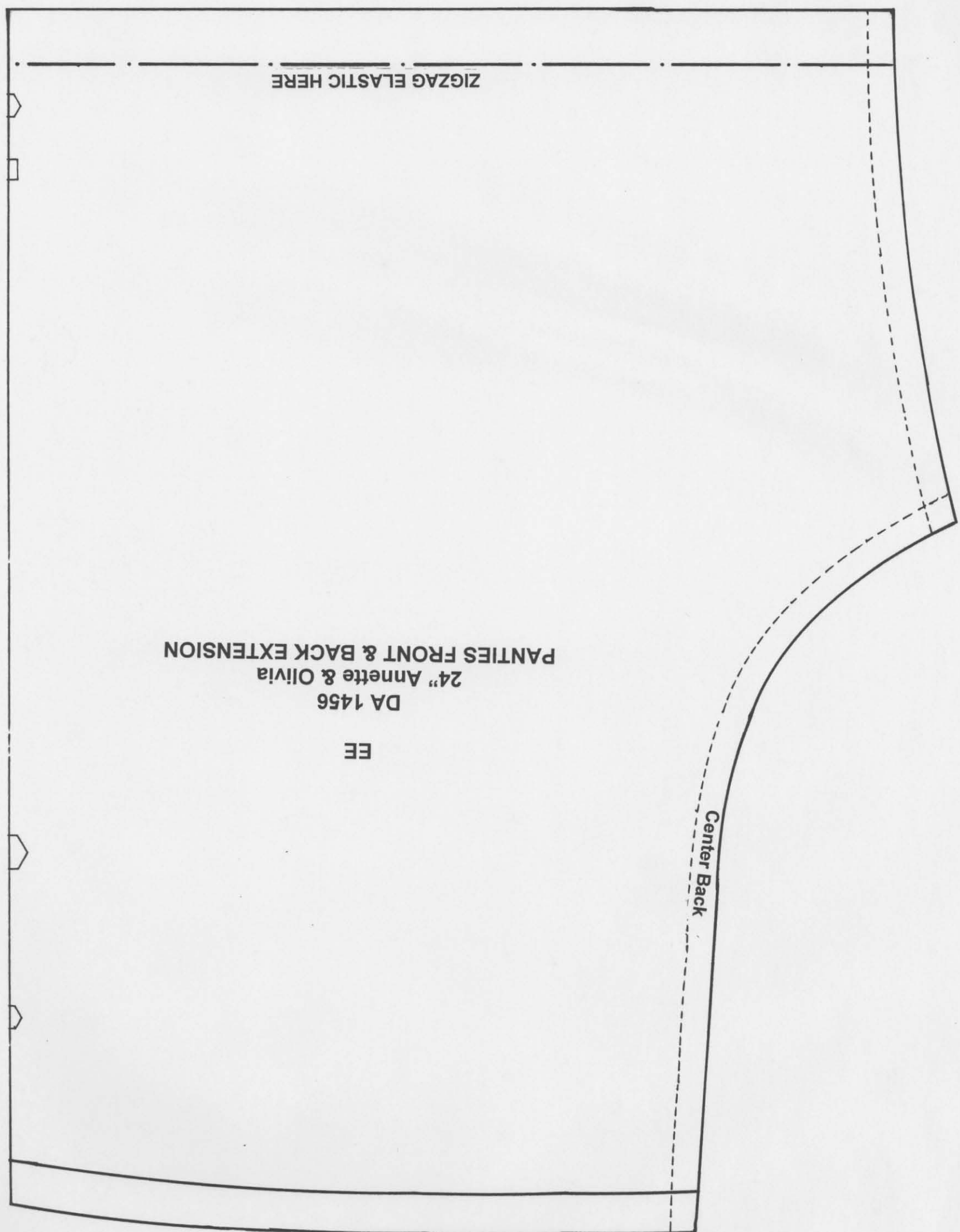


PATTERN NUMBER DA 1456
Copyright 1998



DA 1456 View 1 DRESS SKIRT CUT 1 43" X 10 1/2"
DA 1456 View 1 SLIP SKIRT CUT 1 43" X 8"
VIEW 1 Use Bodice pieces "F", "G" for slip.





EE
DA 1456
24" Annette & Olivia
PANTIES FRONT & BACK EXTENSION

ZIGZAG ELASTIC HERE

Center Back