

**28" MARKET GIRL
COPYRIGHT 1998**

**(Uses 28" Tom Sawyer Shoulder Plate, 28"
Blythe Arms, 28" Whitney Straight Legs)**

FABRIC & NOTIONS

BLOUSE

2/3 yd. Fabric – blouse
1/4 yd. 1/8" Elastic – sleeve
1 1/4 yd. Flat Lace Trim – sleeve
7/8 yd. Flat 2 1/2" Lace – 1st neck ruffle
1 1/2 yd. Flat 2 1/2" Lace – 2nd neck ruffle
1/2 yd. Lace Hemming Tape – neck line
4 Small Snaps – blouse back

SLIP SKIRT

5/8 yd. Fabric – slip skirt
1 1/2 yd. 2" Gathered Lace - slip skirt

SKIRT

18" – 3/4" Twill Tape – waist band
5/8 yd. 60" Fabric – skirt **OR**
1 yd. 45" Fabric – skirt
1 1/2 yd. – 3/8" to 1/2" Flat Braid Trim – skirt at
hem
1 Skirt Hook and Eye – skirt band

WESKIT

1/3 yd. Fabric – weskit
1/4 yd. Fabric – bow
1/2 yd. Braid Trim – weskit waist
Decorative Trim – center front weskit
1 Skirt Hook & Eye – weskit band

APRON

1/3 yd. Fabric – apron

BLOOMERS

1/2 yd. Fabric – bloomers
1 yd. Lace Fabric – bloomers and lace for mop
hat

3/8 yd. - 1/4" Elastic – bloomers **OR**

3/4 yd. – 1/4" Elastic - bloomers

MOP HAT

1/2 yd. Fabric – mop hat
1 1/4 yd. 2" Flat Lace – mop hat
1 1/4 yd. Flat 3/8" Trim – mop hat
2 yd. of Ribbon for Draw String – mop hat
1 1/4 yd. Lace or Trim for Ribbon Casing – mop
hat

BOLERO (VEST)

1/4 yd. Fabric - bolero
1/4 yd. Lining – bolero lining

POKE BONNET

1/2 yd. Fabric - bonnet
15" X 4" Stiffener - bonnet

**PATTERN NUMBER DA1386
BODY PATTERN DA 1114**

**THE
DOLLING
ARTWORKS**
RT. 9 BOX 119
HWY 274
SEVEN POINTS, TX. 75143
TEL. 903-432-9426
FAX 903-432-9502
ORDERS ONLY
800-886-3655

**READ ALL INSTRUCTIONS BEFORE
CUTTING FABRIC AND LACE.**

- NOTE: 1. All seams are 1/4" unless otherwise stated in the pattern instructions.
2. All pieces are sewn with right sides together unless otherwise stated.
 3. Serge or zigzag all raw edges.
 4. Optional lace neckline treatment available. Be sure to measure for one preferred.
 5. Fabrics used are cotton, taffeta, silk, and broadcloth 42" to 60".
 6. Fabrics used are dyed with tea or coffee as desired.
 7. The laces and ribbons we used were silk, cotton and polyester blend.
 8. **Shop your antique shops for laces and trims. USE YOUR IMAGINATION AND HAVE FUN WITH THIS PATTERN! ! !**
 9. If you use 60" fabric, you will not have side seams on the skirt or slip skirt. Measurements are included in instructions.

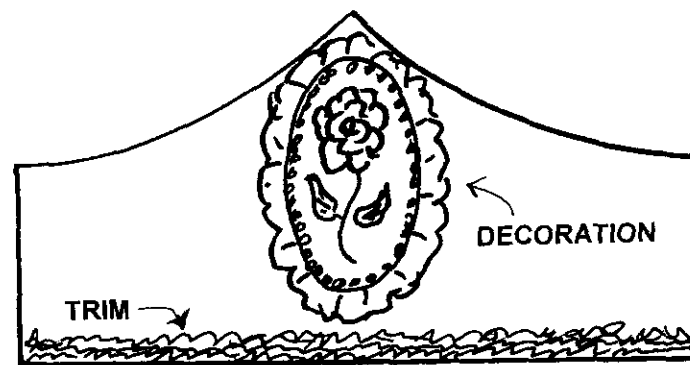
SKIRT/BLOUSE/SLIP ASSEMBLY

1. Be sure to place BLOUSE "A" on the fold for the front of the blouse and the same piece is to be cut on the center line for the back of the blouse.
2. Sew sleeves to the front and backs of the blouse at the armholes.
3. Sew two rows of gathering stitches at the neck line and pull threads to measure 14 1/2".
4. Pin 15" of lace hemming tape to the right side of the blouse neck line with 1/4" extended past the ends of the center backs. Top stitch the lace to the neckline.
5. Fold the ends under at the center backs. Fold the lace over lengthwise to cover the raw edges around the neckline and hand stitch in place on the back side of the blouse.
6. Sew two rows of gathering stitches along the bottom of the blouse front and back. Pull the front stitches to measure 8" and the backs to measure 4 1/2" each.
7. Fold under 1/4" and press the lower sleeve opening. Mark 1/2" line from the bottom of the pressed edge of each sleeve and sew the 3/8" lace or trim on the line on the right side of fabric. Double stitch lace (sew another stitch line approx. 1/8" above the first stitch line).
8. In order to have the bottom ruffle with no raw seam showing, sew sleeve side seams from the bottom of pressed edge to the underarms and down sides of blouse. Fold the sleeve bottoms, wrong sides together, up 1/2" just under the lace bottom and press. Pin along pressed edge and sew a casing 3/16" wide for the elastic. This will make the ruffle approx. 1/2" long. Make small hole at sleeve side seams and insert 4 1/2" of 1/8" elastic. Sew elastic ends together and stitch small holes closed.
9. If there are side seams on the slip and skirt, sew front and back together. If not, measure from the skirt center fronts and mark 23" for the skirt fronts. The remaining fabric will be the backs.
10. Lay the skirt on top of the slip skirt, both with right sides up. Pin and sew two rows of gathering stitches across the top of skirts. Pull the front to measure 8" and the backs to measure 4 1/2" each.
11. Pin the skirts to the blouse bottom, right sides together, and match side seam areas. Pin 3/4" twill tape along raw edges and sew the skirts and blouse together with 1/4" seam. Fold twill tape to cover raw edges and sew. Fold seam up toward the blouse bottom and tack at center back and side seams.
12. Fold the center backs of blouse and skirts under 1/8" and press. Fold again 1/4" and hem by hand with blind stitch. Press.
13. Sew hook and eye at the center back waist area.
14. Measure for the hems of the skirts. Be sure the center back bottoms of each are even. Turn under the skirt 1/8". Press. Turn under 1 3/4" and hem with blind stitch. Sew decorative trim around the skirt 1 3/4" from the bottom.
15. Turn under the slip skirt 1/4" and press. Turn under 2" and blind stitch. Press.
16. Sew the 2" gathered lace or trim of your choice around the bottom of the right side along the hem line or place so lace shows under skirt if preferred.
17. Decorate the neck line with your favorite antique laces or trims.
18. Using the template provided as a guide, sew the snaps on the back of the blouse.

**WESKIT RUFFLE/WESKIT BAND/APRON
ASSEMBLY**

19. **WRST**, sew the weskit band at the center back and top seams. Clip at the curves. Turn and press.
20. Fold the weskit ruffle in half lengthwise and sew the ends. Turn and press.
21. Fold apron sides 1/8", press, then 1/4" and hem sides with a blind stitch. Sew two rows of gathering stitches on apron top. Pull to measure 8".
22. Sew two rows of gathering stitches on the raw edges of the weskit ruffle. Pull to measure 17".
23. Find centers of the apron, weskit ruffle and weskit band. Lay apron right side up, weskit ruffle on top of apron, then with weskit band centered on these with right side to weskit ruffle. Leave lining free and pin all together with centers matching. Sew together with 3/8" seam allowance. Use small tight stitches, then sew another row to help prevent bulk in the seam. Trim and press.

24. Fold weskit band lining over and turn 3/8" hem and whip stitch in place.
25. Sew the decorative trim around the band at the waist area. Sew the trim on the weskit band at the front center.
SEE DIAGRAM BELOW.



26. Sew a skirt hook and eye to the back weskit band as indicated on the pattern.
27. Fold under 1/8", then 1 3/4" on the apron hem. Hand stitch with a blind hem stitch.

BOW ASSEMBLY

28. Sew the bow along the lengthwise seam leaving a 2" to 3" opening for turning.
29. Fold and place the seam in the center. Sew the ends. Turn, close opening and press.
30. Fold fabric in half. Stitch across the bow 9" from each end. Mark the center with a pin and match the stitched areas to the center. Hand stitch at the center through all fabric and pull threads to slightly gather.
31. Make the bow knot by sewing the lengthwise seam. Place the seam in the center and sew one end of the bow knot. Turn and press.
32. Place the raw edge of the bow knot on the back of the bow and wrap it around the center of the bow. Stitch the bow knot together at the back of the bow. Depending on the thickness of the fabric chosen adjust the bow knot front and secure with hidden stitch.
33. Stitch the bow to the center back of the weskit band.

BLOOMERS ASSEMBLY

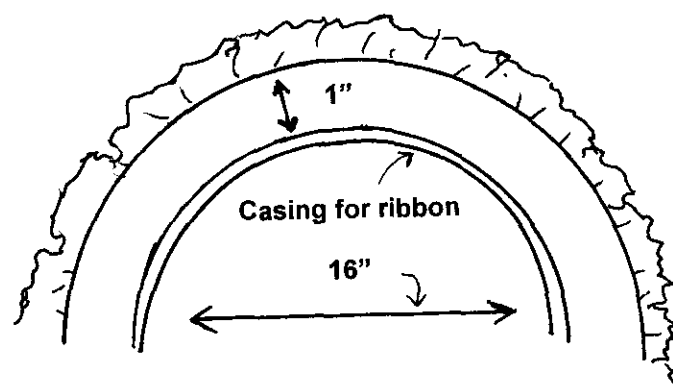
34. Cut lace bloomer from scalloped edge of lace fabric. Line with matching fabric.
35. Sew the inside leg/crotch seams. Turn and press.

36. Fold the bloomers top under 1/4"; press. Turn under 3/8" and sew for elastic casing, leaving 1" to 2" opening for inserting elastic.
37. Insert 10" of 1/8" elastic through the casing and secure the ends together. Whip stitch opening closed.
38. For fabric bloomers, sew hem on bloomer legs.

MOP HAT ASSEMBLY

39. Lay fabric right sides together or for both lace and fabric, lay right side of lace to wrong side of fabric and sew 1/4" seam around 16" circle, leaving 2" to 3" for turning. Turn, close opening with whip stitch and press.
40. Sew the lace or/and trim for the casing 1" from the edge of the circle.
41. Sew the 2" flat lace on the out side edge of the circle.

GUIDE FOR 2" LACE



42. Make small hole in casing and insert ribbon in casing.
43. Pull ribbon to fit doll head and tie a bow.

BOLERO(VEST) ASSEMBLY

44. With right sides together, sew the vest fronts to the back at the shoulder seams. Repeat for lining.
45. With right sides together, sew the vest and lining together at the armholes, around the neck and down the fronts, around the vest to the dot. See pattern piece. Trim these seams to 1/8".
46. Turn vest right side out with right side together and sew the side seams. Pull the wrong side of the unsewn portion of the vest front, wrong side out as much as possible. Sew the unsewn portion and also the back opening a couple of inches on each side. Turn right side out and hand stitch the rest of the back seam allowance closed. Press.

POKE BONNET

47. Sew two rows of gathering stitches around bonnet crown. With right sides together and the stiff lining of the bonnet brim, sew pieces together. Trim seams and turn right side out. Press.
48. Pull gathering stitches of crown to fit brim. Pin together and sew.
49. Sew two rows of gathering stitches to top of ruffle. Pull to approx. 6" to fit bottom of bonnet crown. Pin together and sew. Use rolled hem for bottom of ruffle.
50. Use lace hemming tape to match bonnet and sew around bonnet crown and ruffle. Attach 3 1/2" to 4" of clear elastic to each side of ruffle at the brim bottom. Fold hemming tape over unfinished edge and stitch around crown and ruffle. Decorate with lace and/or ribbons.

THIS PATTERN CONTAINS 18 PATTERN PIECES

- A - BLOUSE FRONT/BACK
- B - SLEEVE
- BB- SLEEVE
- C - SLIP SKIRT
- D - APRON
- E - SKIRT
- F - WESKIT BAND
- G - WESKIT RUFFLE
- H - BOW
- I - BOW KNOT
- J - BLOOMERS
- JJ - BLOOMERS
- K - BOLERO BACK
- L - BOLERO FRONT
- M - MOP HAT
- N - BONNET BRIM
- O - BONNET RUFFLE
- P - BONNET CROWN

TEMPLATE
D
DA 1386
28" Market Girl
APRON
Cut 1 - 28" X 12"
©1998

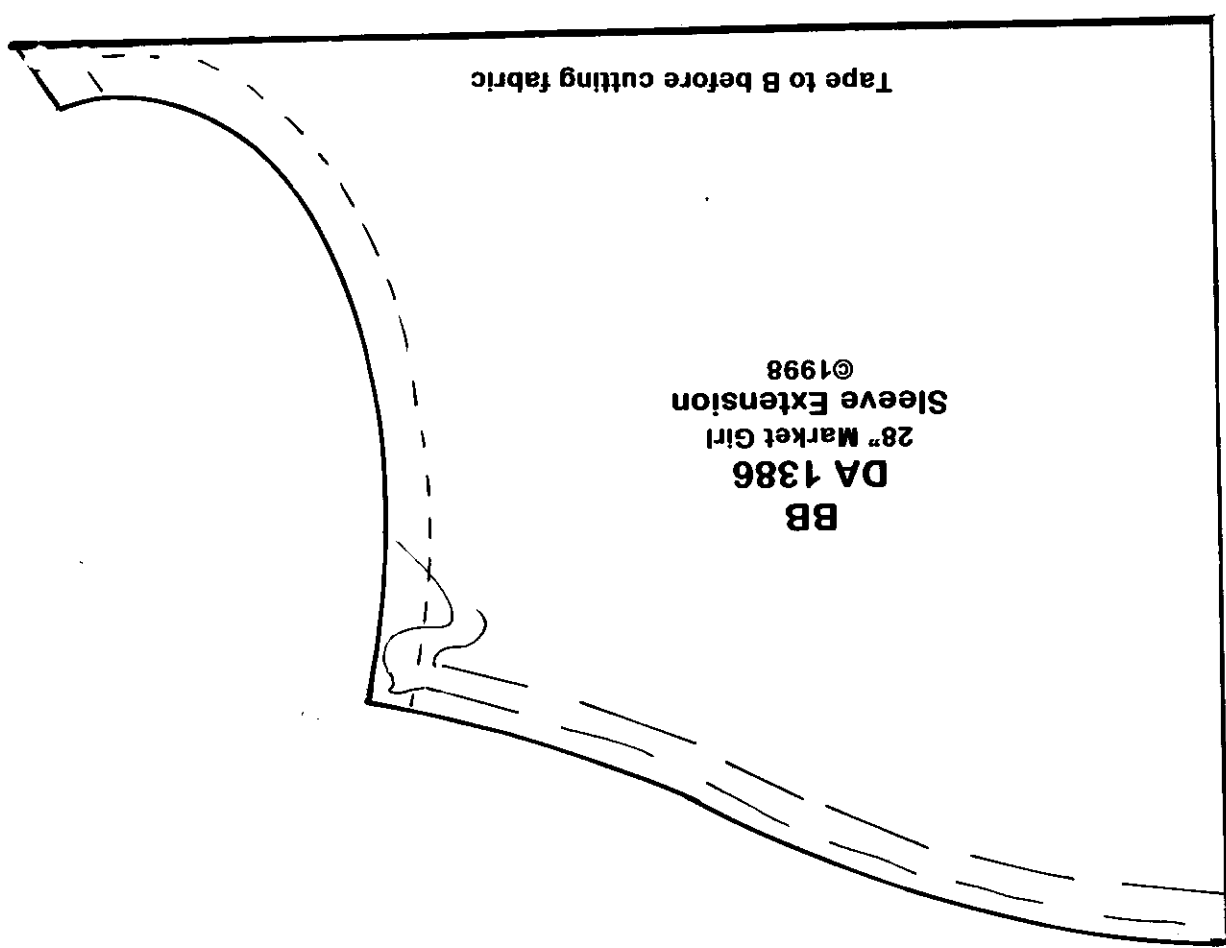
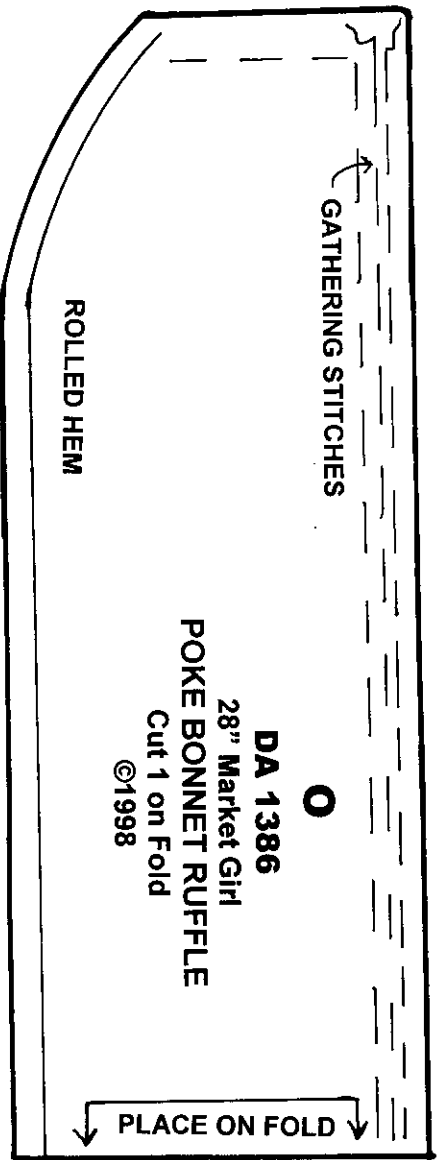
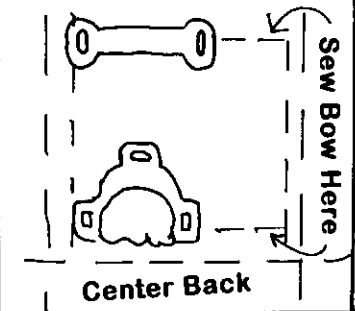
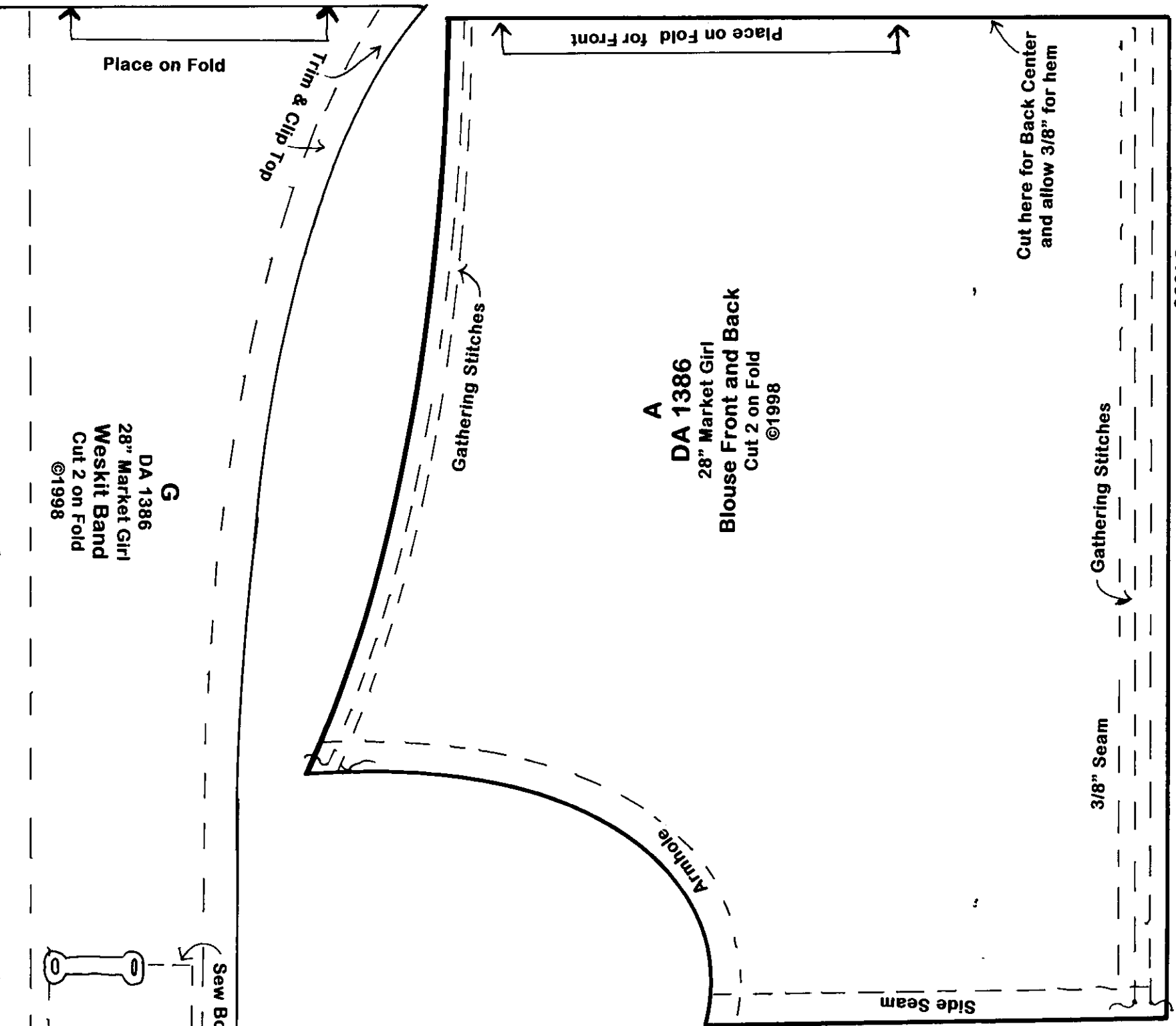
TEMPLATE
C
DA 1386
28" Market Girl
SLIP SKIRT
Cut 1 - 50" X 15" (60" Width)
Or
Cut 1 - 23" X 15" (45" Width) FRONT
Cut 2 - 13 1/2" X 15" (45" Width) BACKS
For Longer Slip, Add 3" ©1998

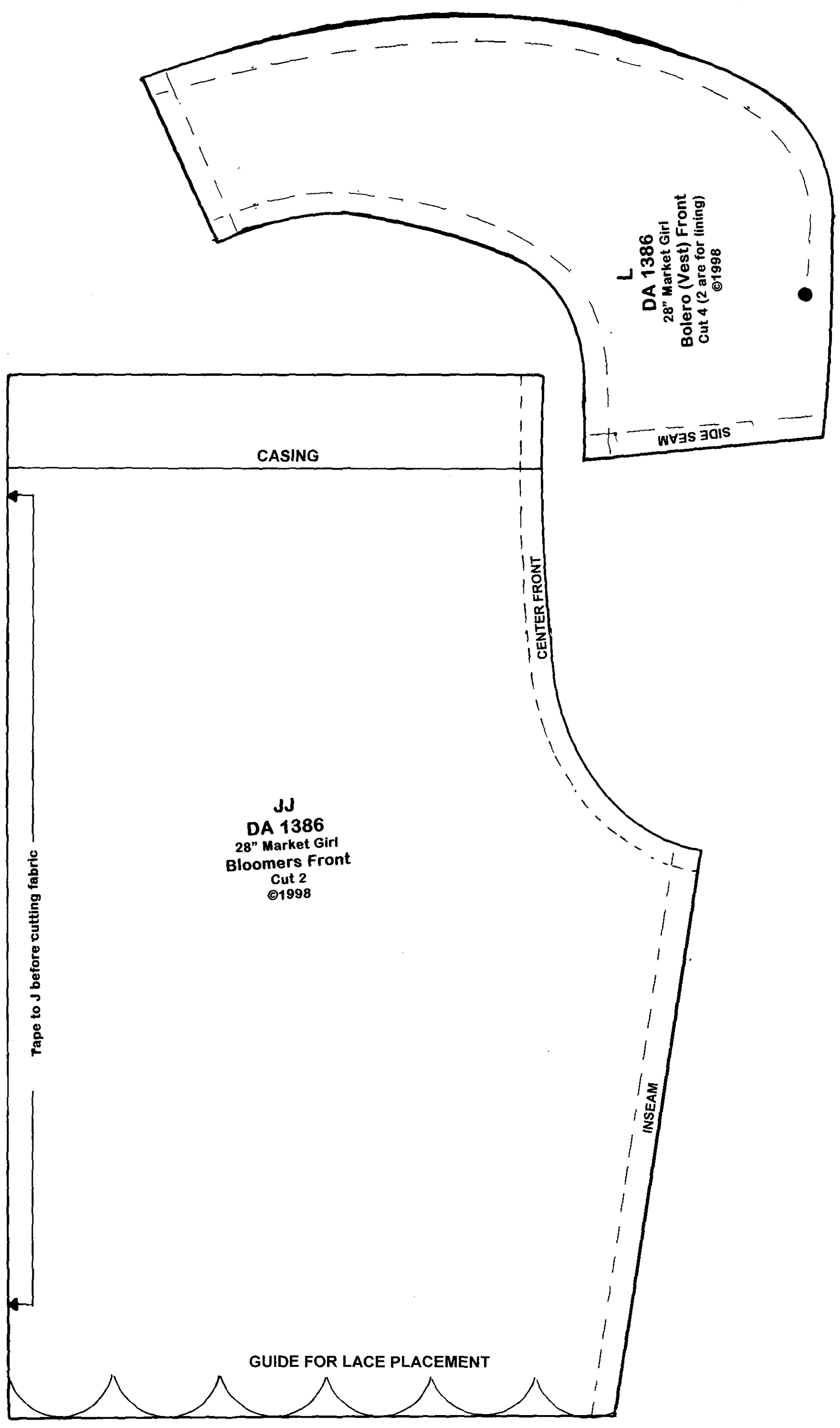
TEMPLATE
E
DA 1386
28" Market Girl
SKIRT
Cut 1 - 50" X 15" (60" Width)
Or
Cut 1 - 23" X 15" (45" Width) FRONT
Cut 2 - 13 1/2" X 15" (45" Width) BACKS
For Longer Skirt, Add 3" ©1998

TEMPLATE
F
DA 1386
28" Market Girl
WESKIT RUFFLE
Cut 1 - 45" X 6"
©1998

TEMPLATE
H
DA 1386
28" Market Girl
BOW
Cut 1 - 29" X 8"
©1998

TEMPLATE
I
DA 1386
28" Market Girl
BOW KNOT
Cut 1 - 4" X 5"
©1998





CASING

JJ
DA 1386
28" Market Girl
Bloomers Front
Cut 2
©1998

Tape to J before cutting fabric

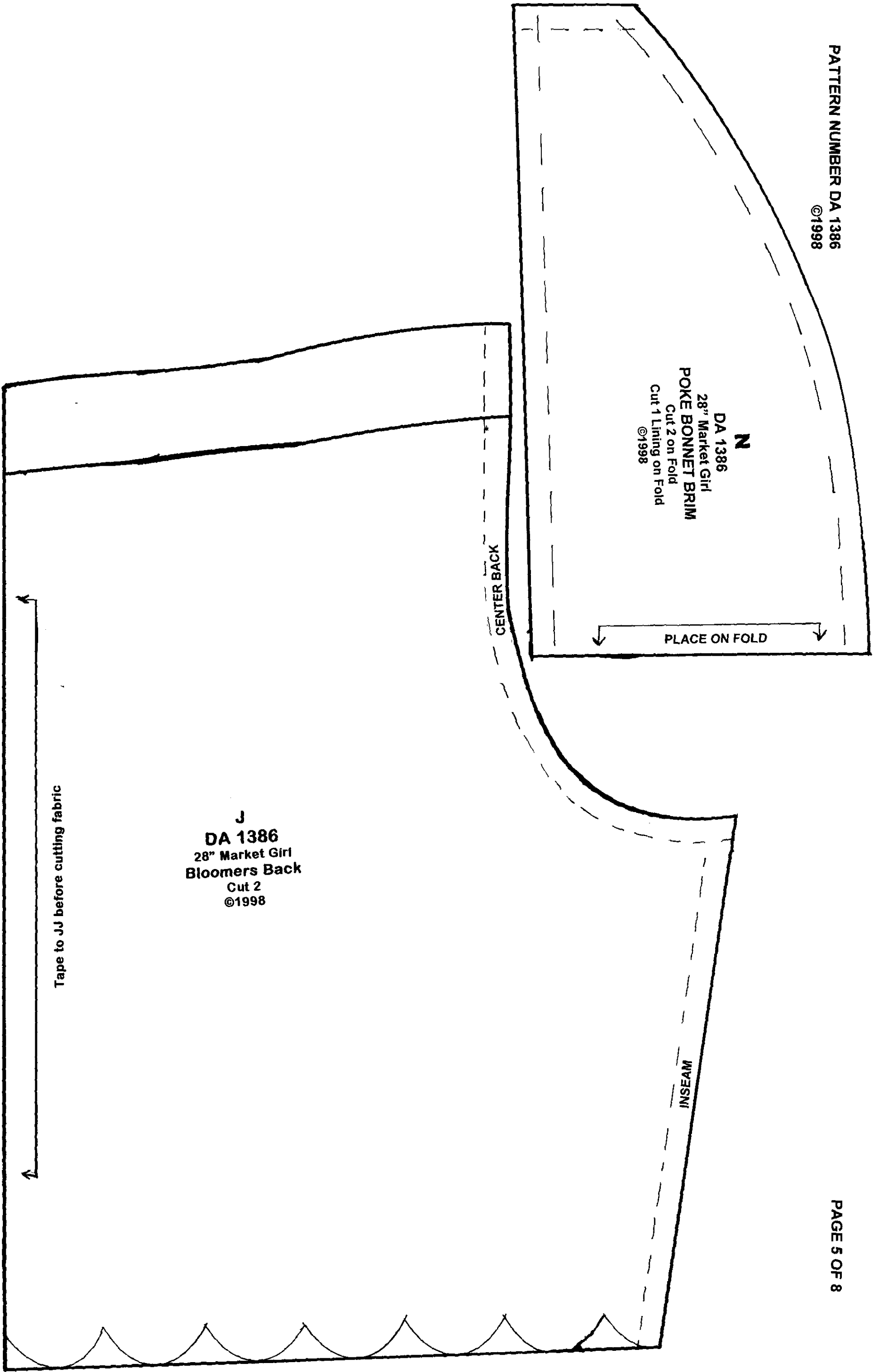
GUIDE FOR LACE PLACEMENT

CENTER FRONT

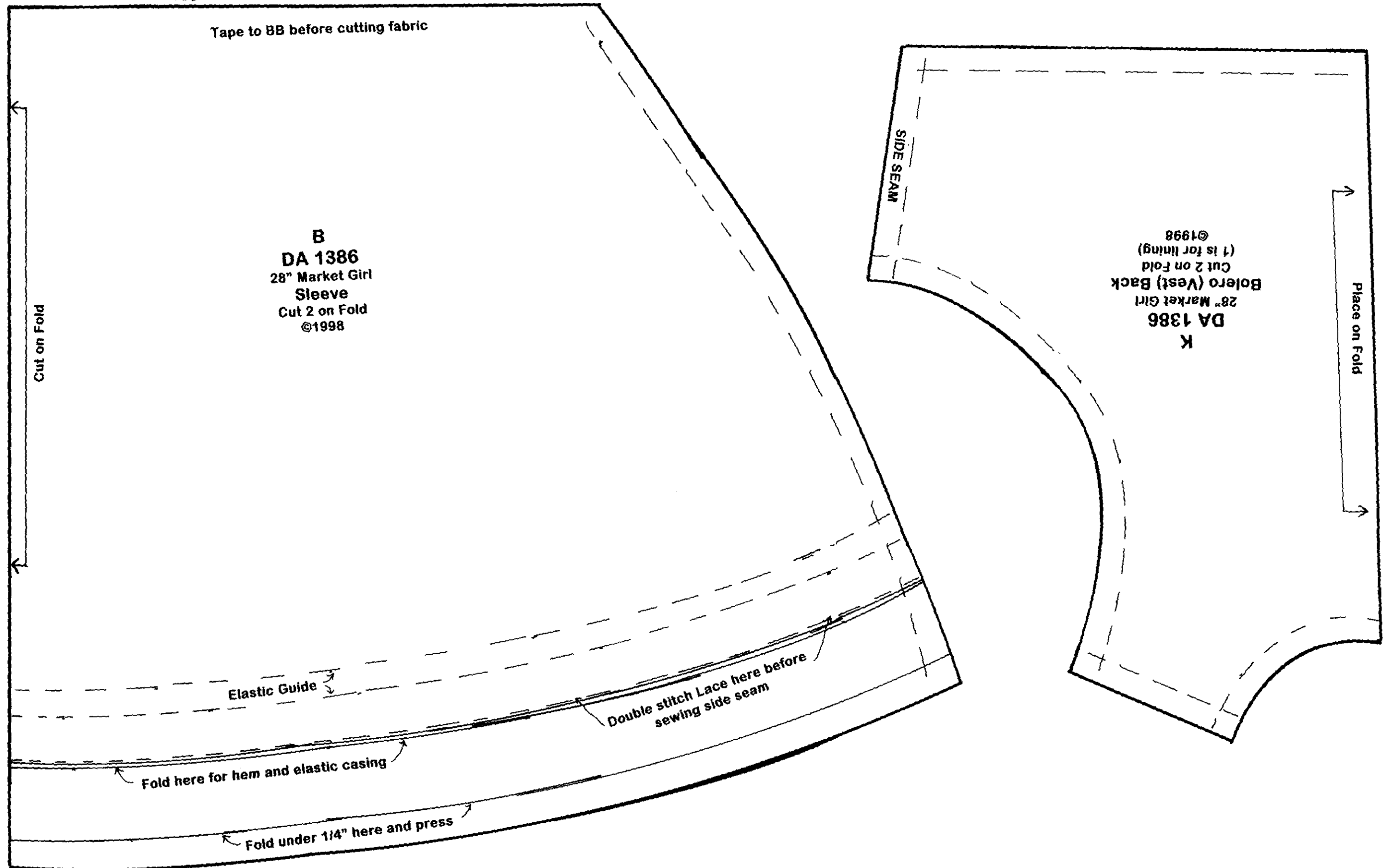
INSEAM

L
DA 1386
28" Market Girl
Bolero (Vest) Front
Cut 4 (2 are for lining)
©1998

SIDE SEAM



PATTERN NUMBER DA 1386
©1998



PATTERN NUMBER DA 1386
©1998

