

20" SLUMBER PARTY - Sleepwear

Copyright 1998

(Fits 20" Heads, 20" Whitney Sh/Pl.,
20" Crystal Bent Legs, 20" Whitney Straight Legs)

FABRICS AND NOTIONS

1 yd. Cotton Print 45" Width - View 1 (AMBER)
3 3/4 yd. Flat Lace 1 1/2" Width - sh/ruffle, sleeves, yoke, hemline
and bloomers - View 1

1 1/4 yd. Blue Batiste 45" Width - View 2 (SHAY)
1/3 yd. Lace Beading 1/2" Width - front yoke - View 2
3 1/2 yd. Flat Lace 1 1/2" Width - yoke, skirt ruffle, bloomers - View 2
1 yd. Blue Satin Ribbon 3/8" Width - yoke - View 2
5/8 yd. Flat Lace 1" Width - sleeves - View 2
5/8 yd. Flat Lace 1/2" Width - front yoke - View 2
1/3 yd. Blue Satin Ribbon 1/4" Width - front yoke - View 2

3/4 yd. Blue/Sunflower Cotton Print 45" Width - View 3 (BAILEY)
2 1/2 yd. Flat Lace 5/8" Width - yoke, sleeves, hemline, bloomers - View 3

3/4 yd. Pink Batiste - View 4 (FLOSSIE)
2 1/2 yd. Flat Lace 5/8" Width - yoke, sleeves, hemline, bloomers - View 4

12" x 5" Pink Batiste - View 5 (TUCKED YOKE PAJAMAS)
3/4 yd. Cotton Print 45" Width - sleeves, skirt, bloomers - View 5
2 1/3 yd. Flat Lace 3/4" Width - yoke, sleeves, bloomers - View 5

1 yd. Plaid Batiste 45" Width - View 6 (ROUND YOKE GOWN)
2 1/4 yd. Flat Eyelet Lace 5/8" Width - yoke, sleeves, bloomers - View 6
1 2/3 yd. Flat Eyelet Lace 1 1/2" Width - hemline

3/4 yd. Red/Khaki Cotton Check 45" Width - View 7 (BOY PAJAMAS)
5 Small Red Buttons - View 7
3 Snaps - View 7
Khaki Thread - top stitching - View 7

7/8 yd. Braided Elastic 1/8" Width - sleeves, bloomers - Views 1,2,3,4,5,6
1/3 yd. Braided Elastic 1/8" Width - boy pants - View 7

READ ALL INSTRUCTIONS BEFORE CUTTING FABRICS & LACES

NOTE 1. All seams are 1/4" unless otherwise indicated.
2. All pieces are sewn with right sides together unless otherwise indicated.

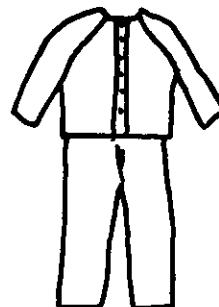
VIEW 5



VIEW 6



VIEW 7



**PATTERN NUMBER DA 1383
BODY PATTERN DA 1275
OR SITTING BODY DA 1176**

**THE
DOLLING
ARTWORKS**
RT. 9 BOX 119
HWY 274
SEVEN POINTS, TX. 75143
TEL. 903-432-9426
FAX. 903-432-9502
ORDERS ONLY
800-886-3655

GENERAL INSTRUCTIONS: (Sleeve Elastic 3 1/2")

- Step 1. Sew yoke backs to yoke front at the shoulder seams. Repeat for lining.
- Step 2. Gather lace to fit the yoke front lower edge. Stay stitch the lace 1/4" above the lower edge of the yoke. (Short Yoke Front = 11" lace, Long Yoke Front = 11 1/2" lace.)
- Step 3. Sew the yoke lining to the yoke around the neck and down the center backs. Trim seam to 1/8", turn and press.
- Step 4. Sew two rows of gathering stitches across the skirt top. Pull up gathering threads to fit the yoke front and backs.
- Step 5. Pin and sew skirt to yoke, leaving yoke lining free. Then turn under lower edge of yoke lining and hand stitch to skirt/yoke seam.
- Step 6. Sew flat lace to the sleeves lower edge with an overlock stitch or a rolled hem. Press seam toward the fabric. (Sleeve "F" = 9 5/8" flat lace per sleeve)
- Step 7. Set your sewing machine for a zigzag stitch with a 4.5 width and 3.0 stitch length and zigzag 1/8" elastic on each sleeve. *SEE PATTERN FOR PLACEMENT.*
- Step 8. Slash the skirt armhole dart on the solid line, as indicated on the pattern guide.
- Step 9. Sew two rows of gathering stitches across the upper sleeves. Pull up gathering threads to fit the armholes. Pin and sew sleeves in armholes.
- Step 10. Sew the sleeve underarm seams and the skirt armhole darts.
- Step 11. Sew proper width lace to the lower skirt edge if applicable. (30" flat or double and gather.)
- Step 12. Sew the center back skirt seam starting at the ●. *SEE PATTERN FOR PLACEMENT.*
- Step 13. Sew two snaps to the yoke backs.

BLOOMERS CONSTRUCTION: (Waist Elastic 11") (Leg Elastic 5")

- Step 14. Sew the fronts together at the center front seam and the backs at the center back seam.
- Step 15. Turn under and sew leg casings. Top stitch lace to the lower edge of each leg casing. (13 1/4" flat lace per leg)
- Step 16. Insert leg elastic in each casing anchoring the ends in the seam allowances.
- Step 17. Stitch crotch/inseam.
- Step 18. Turn under and sew waist casing leaving an opening for inserting elastic. Insert 1/8" elastic, lap ends and hand stitch together. Close casing with a machine stitch.

-- VARIATIONS --

VIEW 1 - (Pattern Pieces A,B,E,F,H, I)

- 19. Same as Step 1 and 2.
 - 20. Sew 9" flat lace to the straight edge of the shoulder ruffles with an overlock stitch or straight stitch then turn under edge 1/8" and top stitch in place. Press seam toward the fabric.
 - 21. Sew two rows of gathering stitches on the curved edge of the shoulder ruffles. Pull up the gathering threads to fit between the ●'s on the front and back yokes. Pin and stay stitch ruffles to the yoke.
 - 22. Follow Steps 3 thru 18.
- VIEW 2 - (Pattern Pieces C,D,F,H,I,V)**
- 23. Prepare yoke according to *DIAGRAM "A"*.
 - 24. Follow Step 1.

25. Cut a length of 1 1/2" wide lace 37" long. Gather lace and stay stitch to the seam allowance around the outer edge of the yoke, stopping at the center back seam allowance.
26. Follow Step 3 thru 10.
27. Sew the two fabric skirt ruffle pieces together at each end forming a circle. Press seams open, then fold ruffle in half lengthwise.
28. Sew two rows of gathering stitches around the cut edge of the ruffle. Pull up gathering threads to fit the lower edge of the skirt.
29. Cut a length of 1 1/2" wide lace 60" long. Sew ends of lace together then sew two rows of gathering stitches across the lace top. Pull up gathering threads to fit the skirt lower edge. Pin and staystitch gathered lace to skirt.
30. Position gathered skirt ruffle on top of lace with the two ruffle seams at the skirt sides. Pin and sew ruffle to skirt.
30. Finish the seam with an overlock stitch or overcast the seam with a zigzag stitch.

31. Follow Steps 14 thru 18 for bloomers.

VIEW 3 - (Pattern Pieces C,D,F,H,I)

32. Follow Steps 1 thru 18.

VIEW 4 - (Pattern Pieces A,B,F,G,H)

33. Follow Steps 1 thru 18.

VIEW 5 - (Pattern Pieces C,D,F,H,I) (SKIRT HEM 1 1/2")

34. Use pink batiste 12" x 5". Sew 1/8" tucks spacing the tucks 3/8" apart. SEE DIAG. "B".

35. After sewing 12 tucks - press six tucks to the right and the remaining six to the left.

36. Center the yoke front pattern piece on the tucked fabric. Pin and cut out yoke front.

37. Follow Step 1. Then gather 37" of lace and staystitch to the seam allowance across the front yoke, over the shoulders, and across back yokes. To finish follow Steps 3 thru 18.

VIEW 6 - (Pattern Pieces H,J,K,L,M)

38. Gather 27" flat eyelet lace and sew around the outside edge of the yoke. Turn under ends of lace and hand tack in place. Lace ends should not extend into the center back seam allowance.

39. Same as Step 3.

40. Same as Step 6 and Step 7. (13" flat eyelet lace per sleeve.)

41. Sew the sleeves to the armholes of the front and back skirts.

42. Then sew two rows of gathering stitches around the top edge of the skirt and sleeves.

43. Pull up gathering threads to fit the yoke. Pin and sew skirt and sleeves to yoke, matching notches and leaving the yoke lining free.

44. Turn under the yoke lining lower edge 1/4" and hand stitch to the skirt/yoke seam.

45. Gather 1 2/3 yds. of flat eyelet lace and sew to the lower edge of the skirt. Finish the seam edge with an overlock or zigzag stitch.

46. Sew the center back skirt seam starting at the ●.

47. Sew two small snaps on the yoke back.

VIEW 7 - SHIRT CONSTRUCTION - (Pattern Pieces N,O,P,S)

48. Sew the right side of the center front plackets to the wrong side of each shirt front.

49. Fold placket to the right side of the shirt front. Turn under remaining edge of placket. Pin and top stitch in place. Prepare both fronts.
50. Matching notches, sew the sleeves to the shirt fronts and back.
51. Sew the shoulder darts on both sleeves.
52. Sew the front and back neck facings together at the shoulder seams. Finish outer edge of facing by serging, zigzagging, or turn under 1/8" and stitch.
53. Fold under each facing end, then sew the facing to the shirt neck. Trim seam to 1/8", turn and press. Whip stitch outer edge of facing in place.
54. Sew the underarm sleeve seams and the shirt side seams.
55. Sew a narrow hem on the shirt bottom edge.
56. Finish each sleeve with a 1/4" hem.
57. Lap left front over the right. Sew snaps and buttons in place.

View 7 - PANTS CONSTRUCTION - (Pattern Pieces Q,R) (Waist Elastic 11")

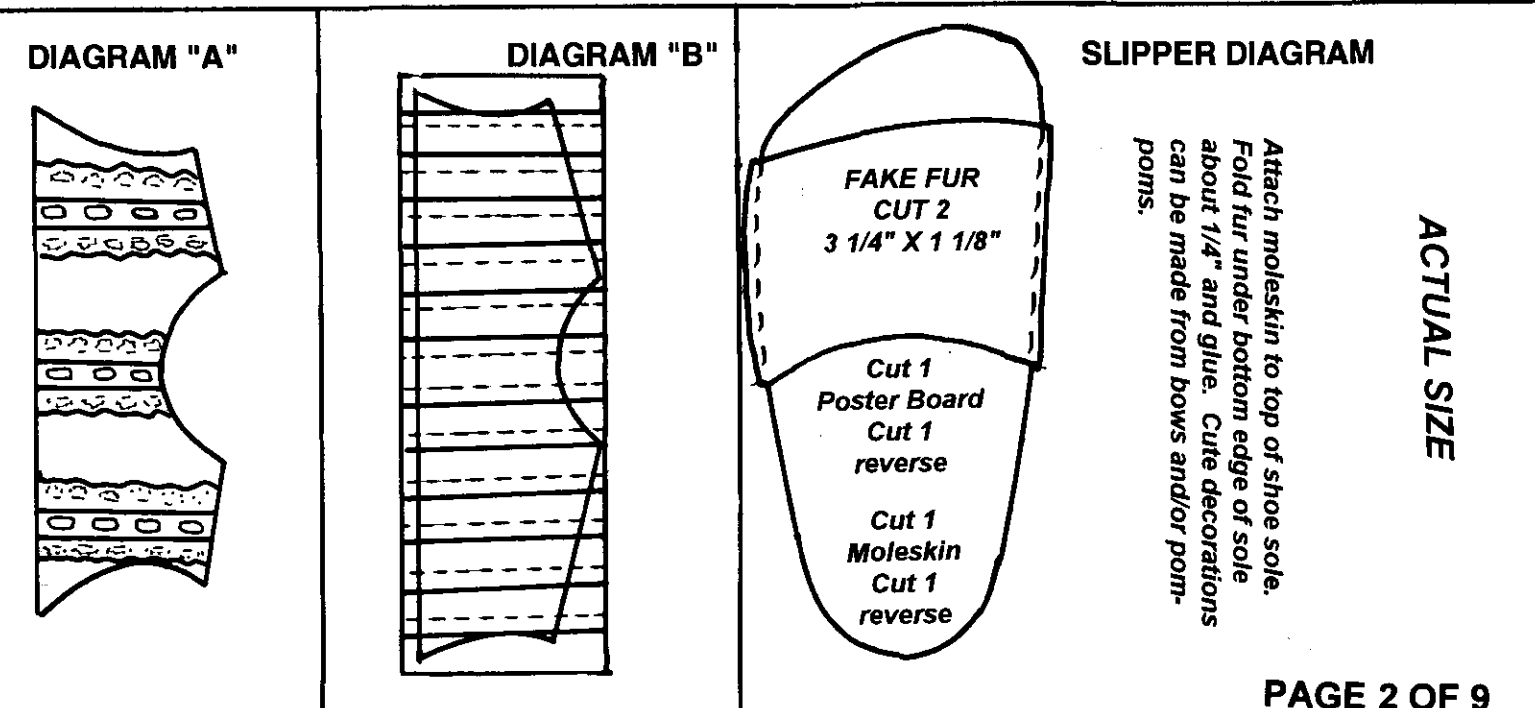
58. Sew the fronts together at the center front seam and the backs at the center back seam. Sew the front to the back at the side seams.

59. Turn under and sew waist casing leaving an opening at center back for inserting elastic. Insert elastic, lap the ends and hand stitch together. Close the casing opening with a machine stitch.

60. Sew the crotch/inseam then finish each pants leg with a 1/4" hem.

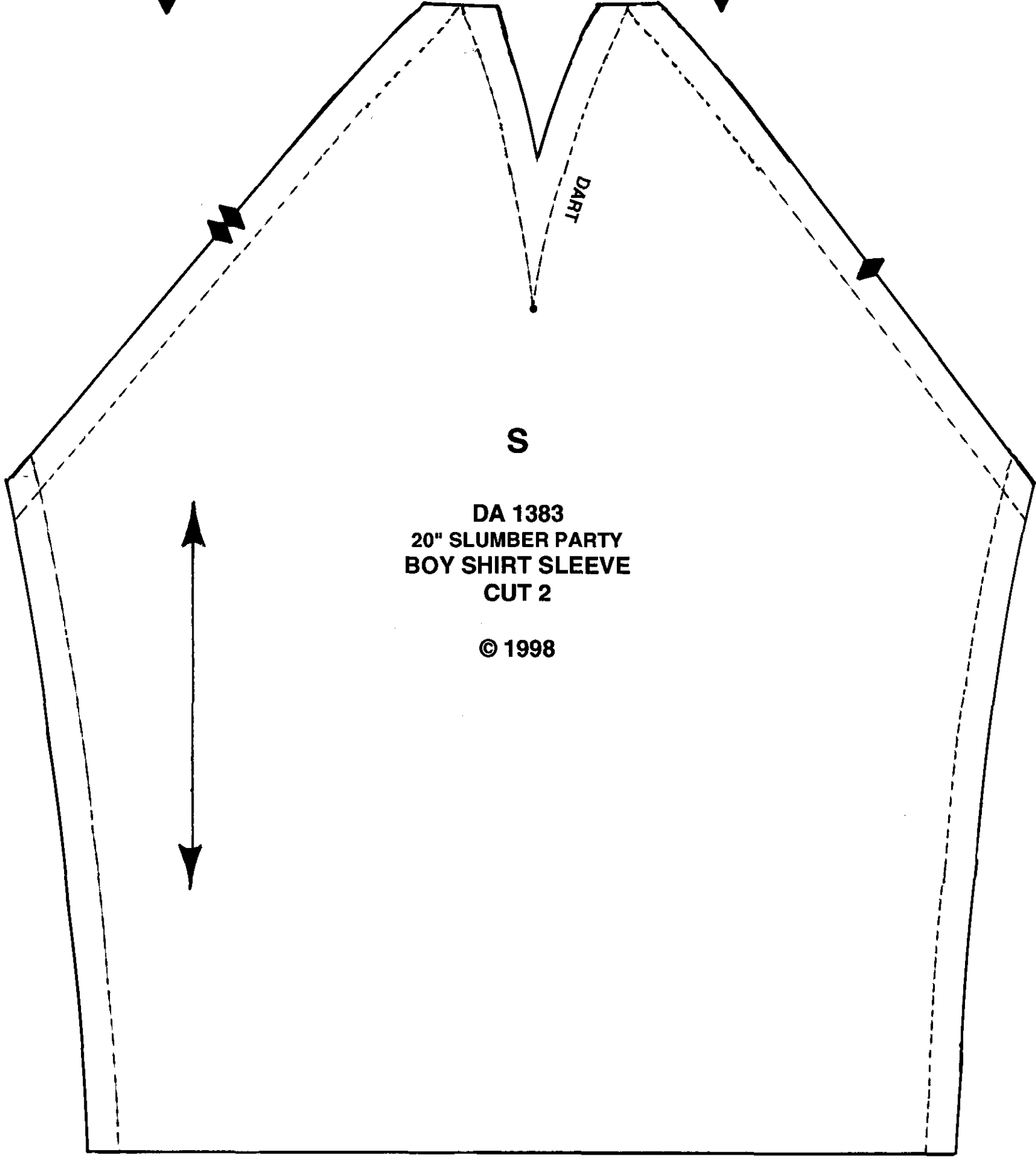
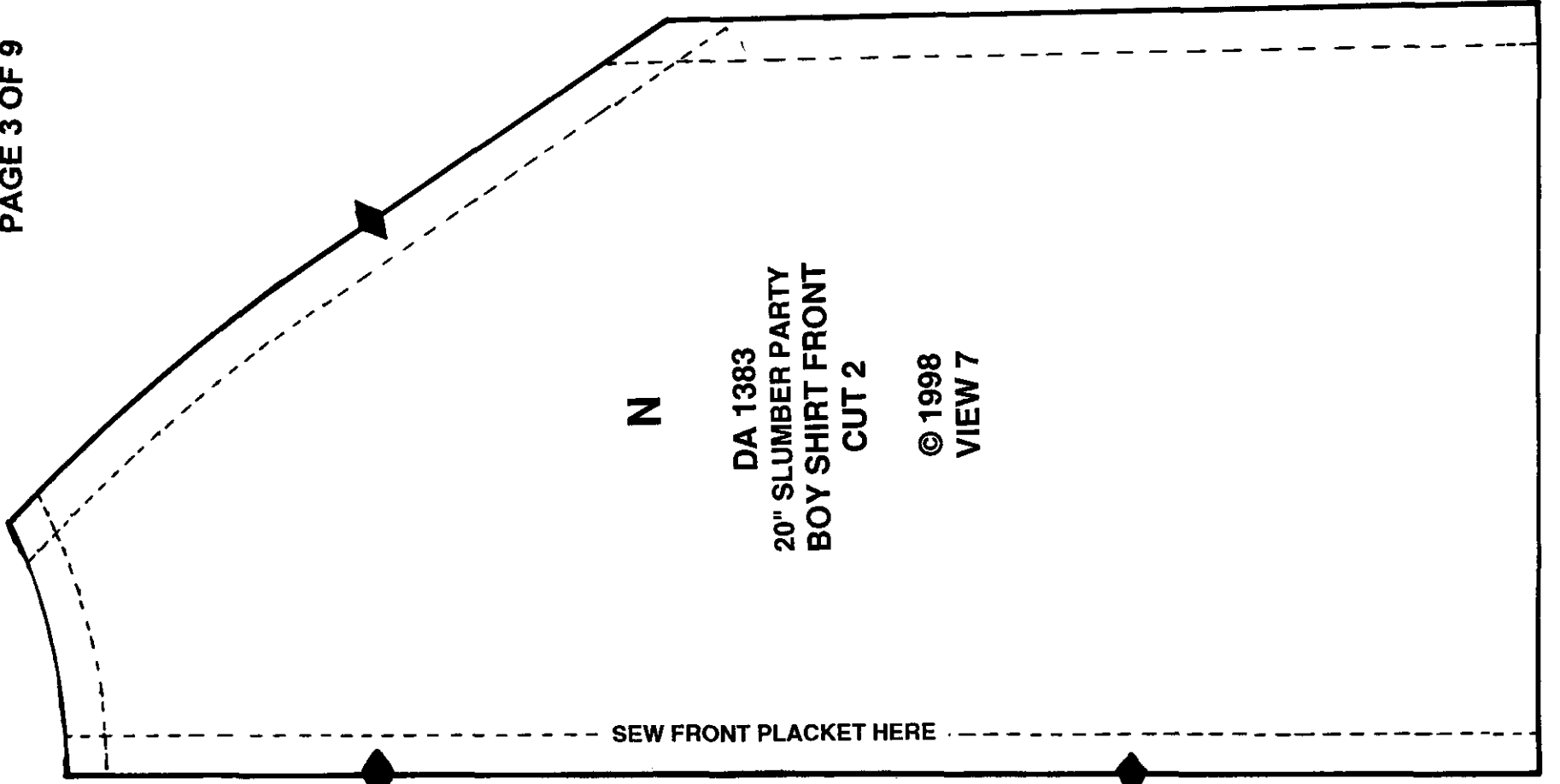
This pattern contains 22 pattern pieces. They are as follows:

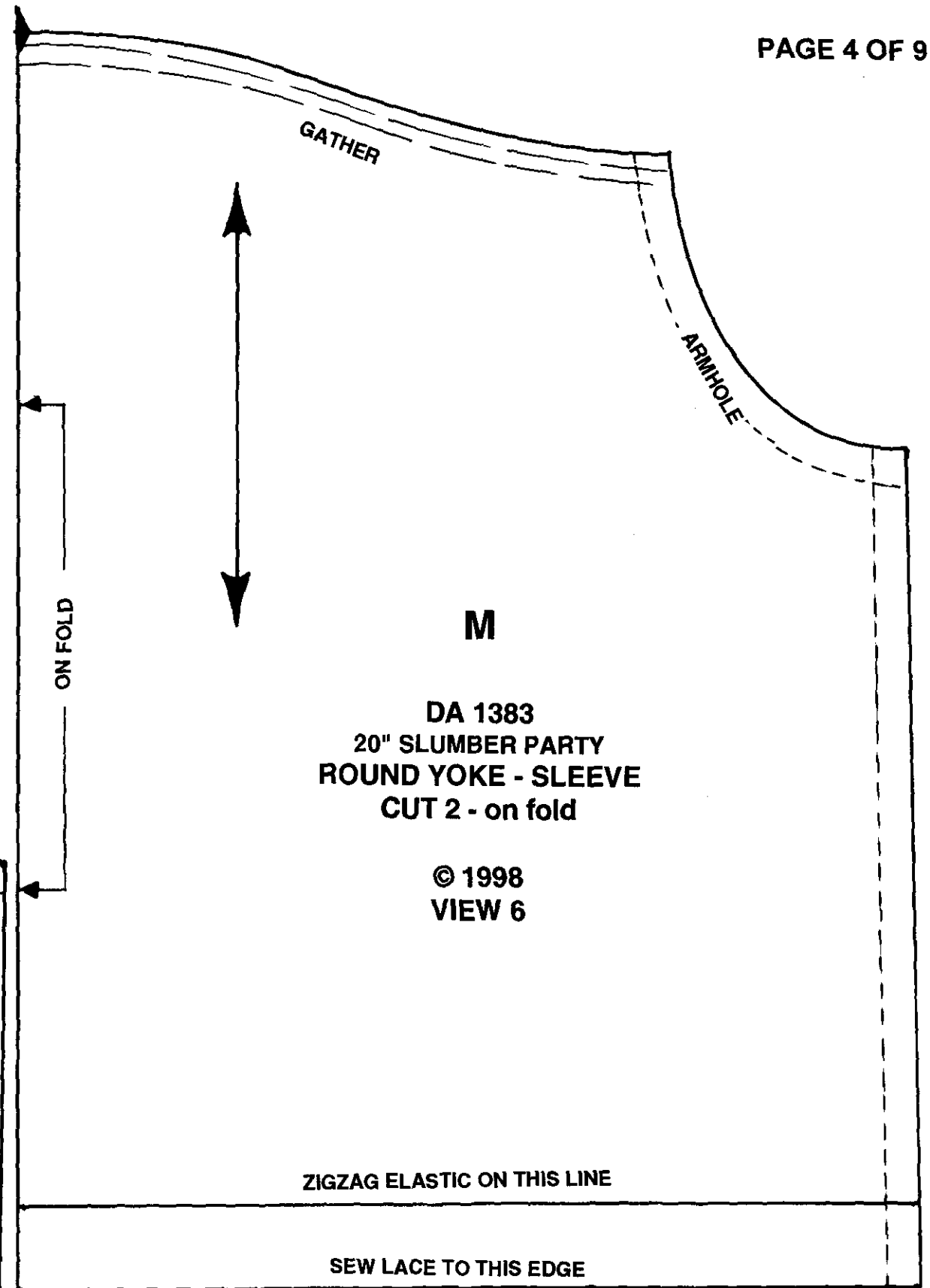
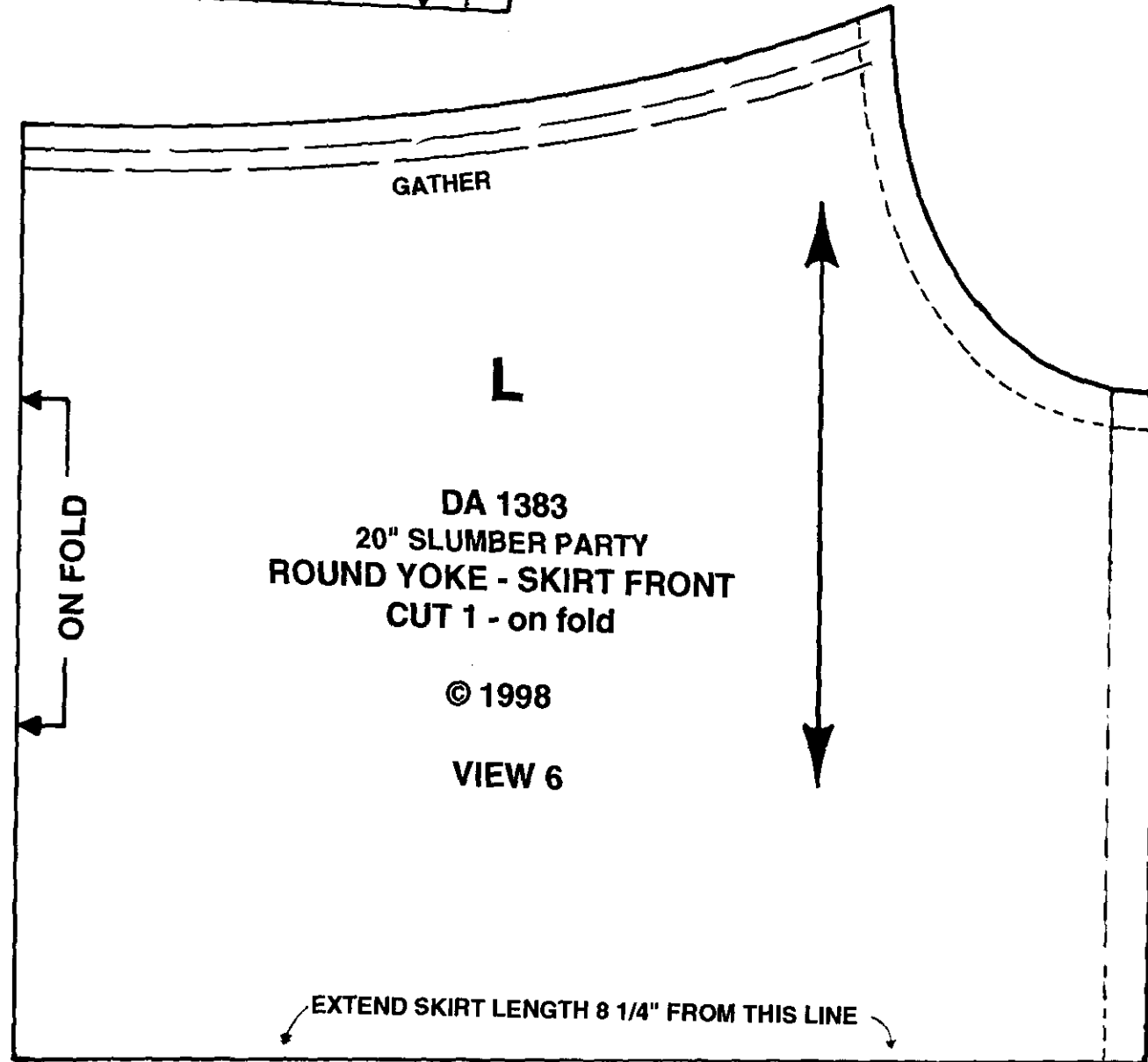
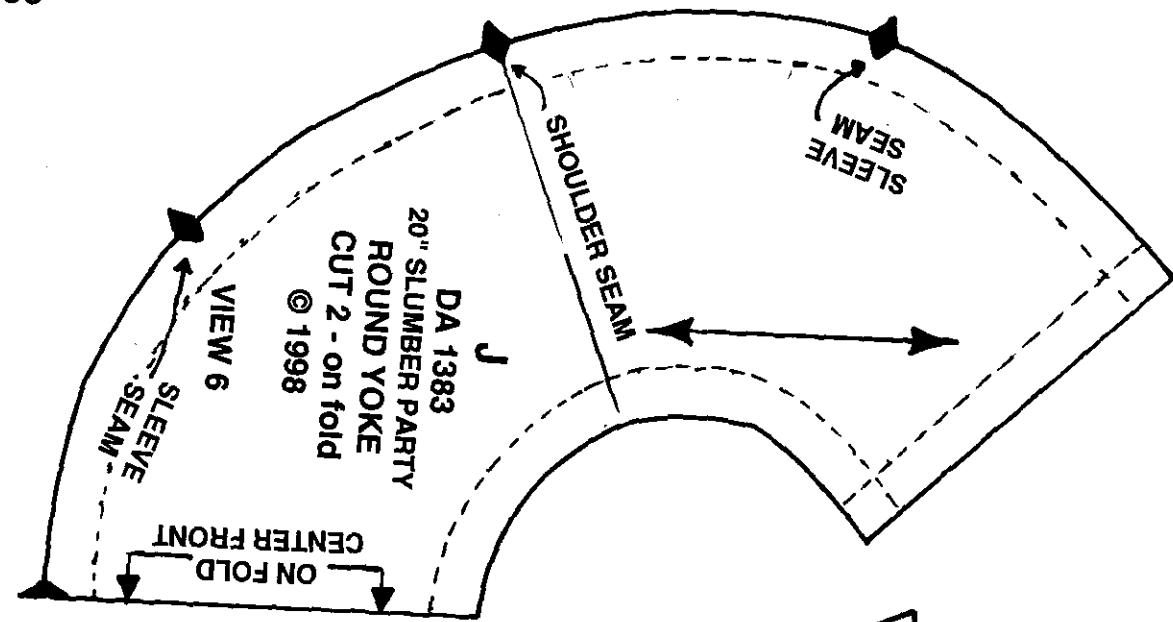
- | | | |
|-----------------------------|-----------------------------|----------------------------------|
| A -- Short Yoke Front | H -- Bloomers | O -- Boy Shirt Back |
| B -- Short Yoke Back | I -- Long Yoke Skirt Guide | P -- Boy Shirt Front Placket |
| C -- Long Yoke Front | J -- Round Yoke | Q -- Boy Pants Front |
| D -- Long Yoke Back | K -- Round Yoke Skirt Back | R -- Boy Pants Back |
| E -- Sleeve Ruffle | L -- Round Yoke Skirt Front | S -- Boy Shirt Sleeve |
| F -- Sleeve | M -- Round Yoke Sleeve | T -- Boy Shirt Front Neck Facing |
| G -- Short Yoke Skirt Guide | N -- Boy Shirt Front | U -- Boy Shirt Back Neck Facing |
| | | V -- Skirt Ruffle |

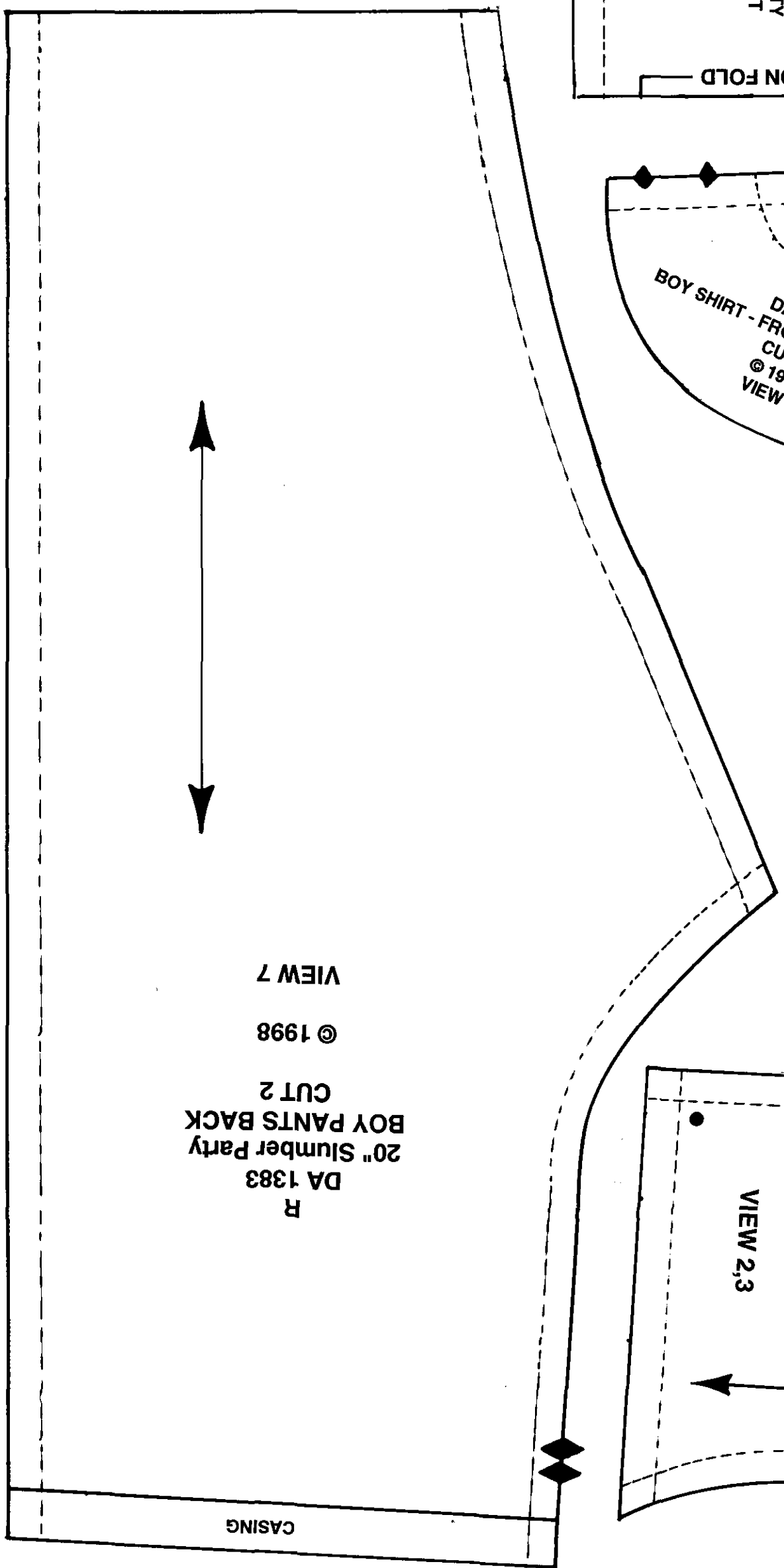
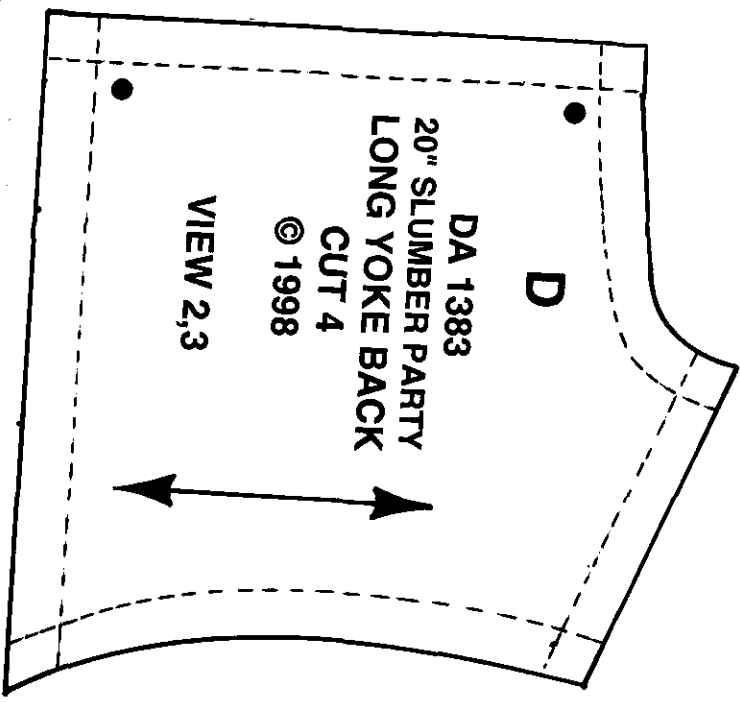
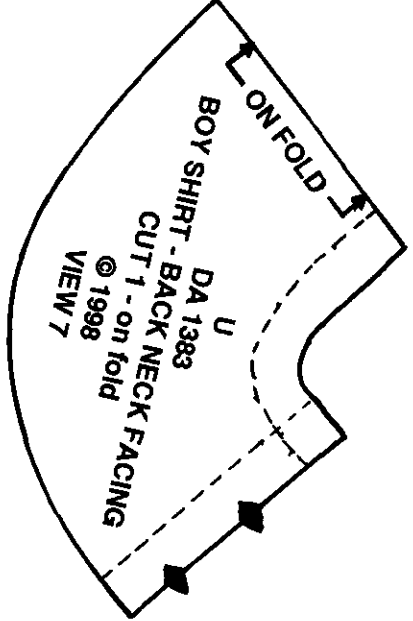
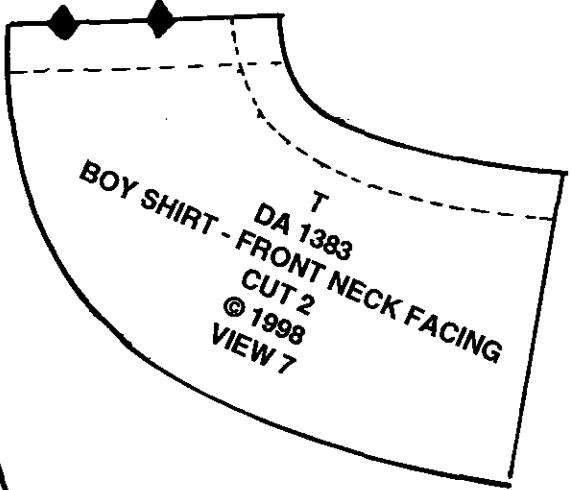
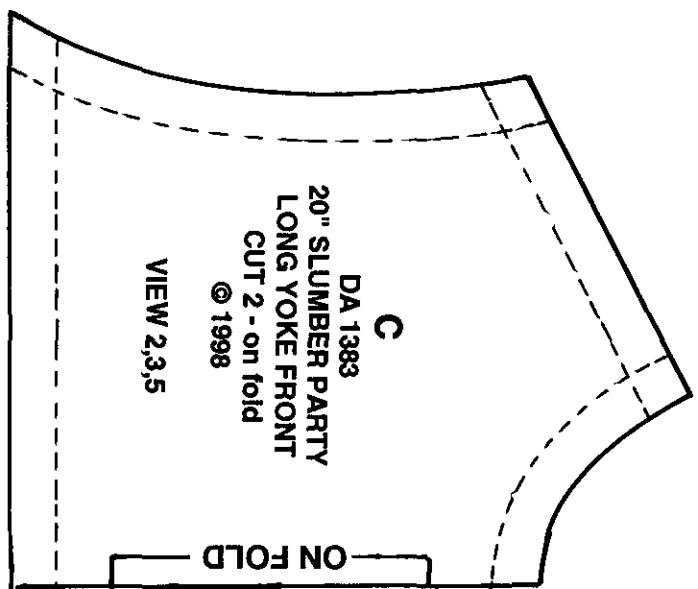


Attach moleskin to top of shoe sole. Fold fur under bottom edge of sole about 1/4" and glue. Cute decorations can be made from bows and/or pom-poms.

ACTUAL SIZE







VIEW 7
© 1998
CUT 2
20" Slumber Party
BOY PANTS BACK
DA 1383
R

