

28" JAZZ BABY - Tap Dance Costume
Copyright 1997

(Use 24" Chyna Sh/Pl., 28" Shay Hands,
 28" Right Whitney St. Leg, 28" Left Crystal Bent Leg)

FABRICS & NOTIONS

- 3/4 yd. Black Spandex - body suit
- 1/2 yd. Gold Sequined Knit - sleeves
- 3/8 yd. Black Crepe - skirt
- 38" Gold Braid 1/4" Width - skirt waistband
- 2 1/3 yd. Gold Iridescent Sequins - body suit front
- 1/4 yd. Tulle With Glitter 56" Width - hair bow
- 10 Small Snaps - shoulders, center back
- 1 Hook & Eye - skirt waistband
- 1/4 yd. Braided Elastic 1/8" Width - sleeves
- 1 3/8 yd. Ribbon 3/4" Width - shoe ties, neck bow
- Monofilament Thread - embellishment sewing

READ ALL INSTRUCTIONS BEFORE CUTTING FABRICS AND TRIMS

- NOTE:**
1. The body suit can be cut from a pair of ladies opaque spandex tights size large.
 2. Use a #80 machine needle for knits and a stretch stitch.
 3. Neck, shoulder and armhole seams are 1/4". Center front, center back and legs are 1/8" seams.

4. All pieces are sewn with right sides together unless otherwise indicated.

**** 5. When cleaning greenware, it is best to cut the forearm off the hands 1/2" above the wrist. Carve a groove 1/4" above the wrist.

BODY SUIT CONSTRUCTION:
(Sleeve Elastic 4")

1. Sew the fronts together at the center front seam. Then sew the backs together at the center back seam starting at the dot and sewing to the crotch.
2. Sew the front neck facing together at center front seam. Then sew the facing to the body front across the shoulders and neck. Trim seam to 1/8" and turn.
3. With right sides together, fold the **right back facing** on the seam allowance line. Fold the **left back facing** on the fold line with right sides together. **See Diagram "A"**. Sew the back neck facing to the neck. Trim seam and turn.
4. With a 4.5 zigzag stitch width and 2.0 stitch length - sew across the shoulder raw edge and the arm hole. This will hold the body and facing together and finish the edges. Lap the front shoulders over the back shoulders 1/4". Pin to hold in place.

PATTERN NUMBER DA 1378
BODY PATTERN DA 1114

THE DOLLING ARTWORKS
 RT. 9 BOX 119
 HWY 274
 SEVEN POINTS, TX. 75143
 TEL. 903-432-9426
 FAX. 903-432-9502
 ORDERS ONLY
 800-886-3655

5. Sew two rows of gathering stitches on each sleeve cap. **See Pattern For Placement.**
6. Sew the underarm sleeve seams.
7. Turn under casings on lower sleeves and stitch in place, leaving a small opening for inserting elastic.
8. Insert elastic in sleeves, lapping elastic ends. Hand stitch ends together and close the casing with a machine stitch.
9. Pull up gathering threads to fit armholes. Match notches, pin and sew sleeves to armholes.
10. Lap the **left back** over the **right back** at center back.
11. Sew the leg inseams.
12. Sew snaps on the shoulders and center back opening.

SKIRT CONSTRUCTION:

13. Sew seven skirt pieces together at the skirt opening seam.

14. Zigzag two 18 1/2" lengths of narrow gold braid together for the waist band with clear monofilament thread.

15. Open out skirt circle and using a small zigzag stitch, sew the skirt **top edge** to one edge of the waistband.

16. Hand stitch a length of 1/4" wide gold braid to the bottom of the skirt. The skirt bottom can also be decorated with a bead of fabric glue and gold glitter.

17. Sew a hook and eye on the waistband.

EMBELLISHMENTS:

18. Decorate the body suit front with gold braid and sequins. **See Pattern For Design.**

19. Hand stitch all embellishments to the suit.

20. Size 4 Infant Shoes - - Cut off straps, buckles and bows. Apply Elmer's Glue on outside of shoe and sprinkle with black glitter. Thin the glue with a small amount of water.

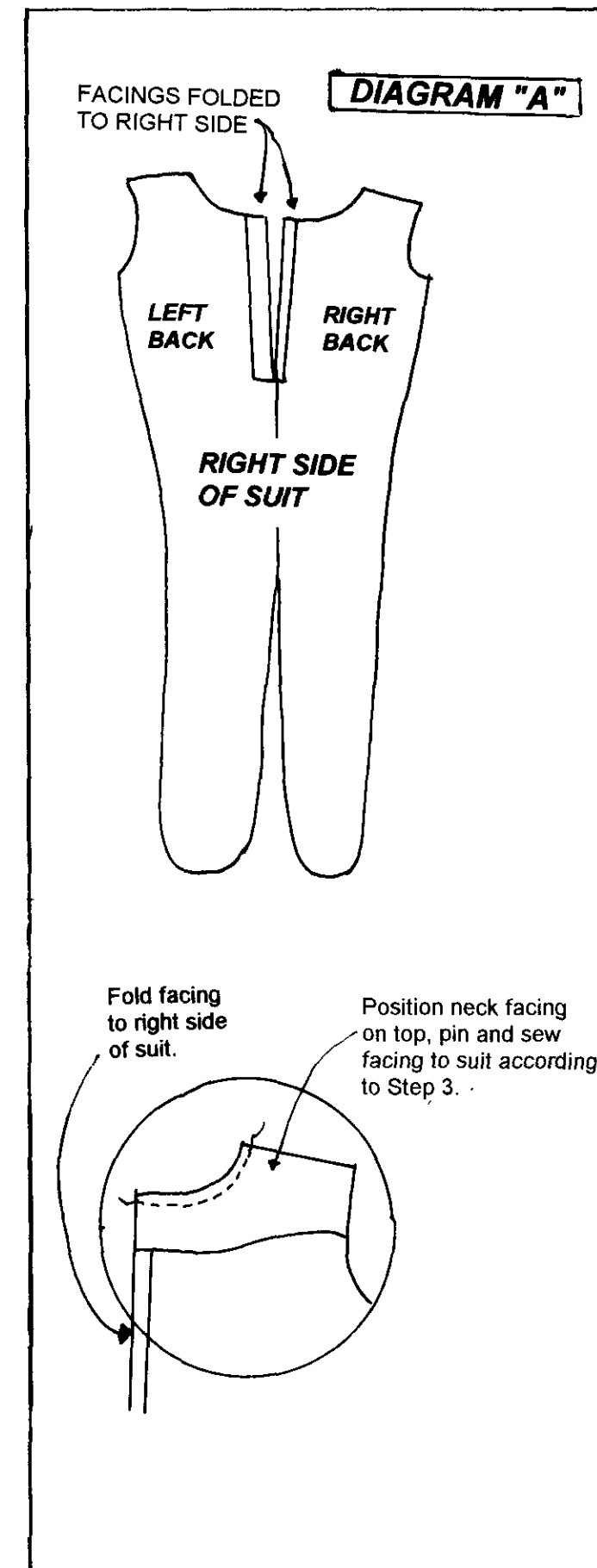
21. Hot glue ribbon ties inside of shoes. Allow glue to cool before mounting shoes on the doll.

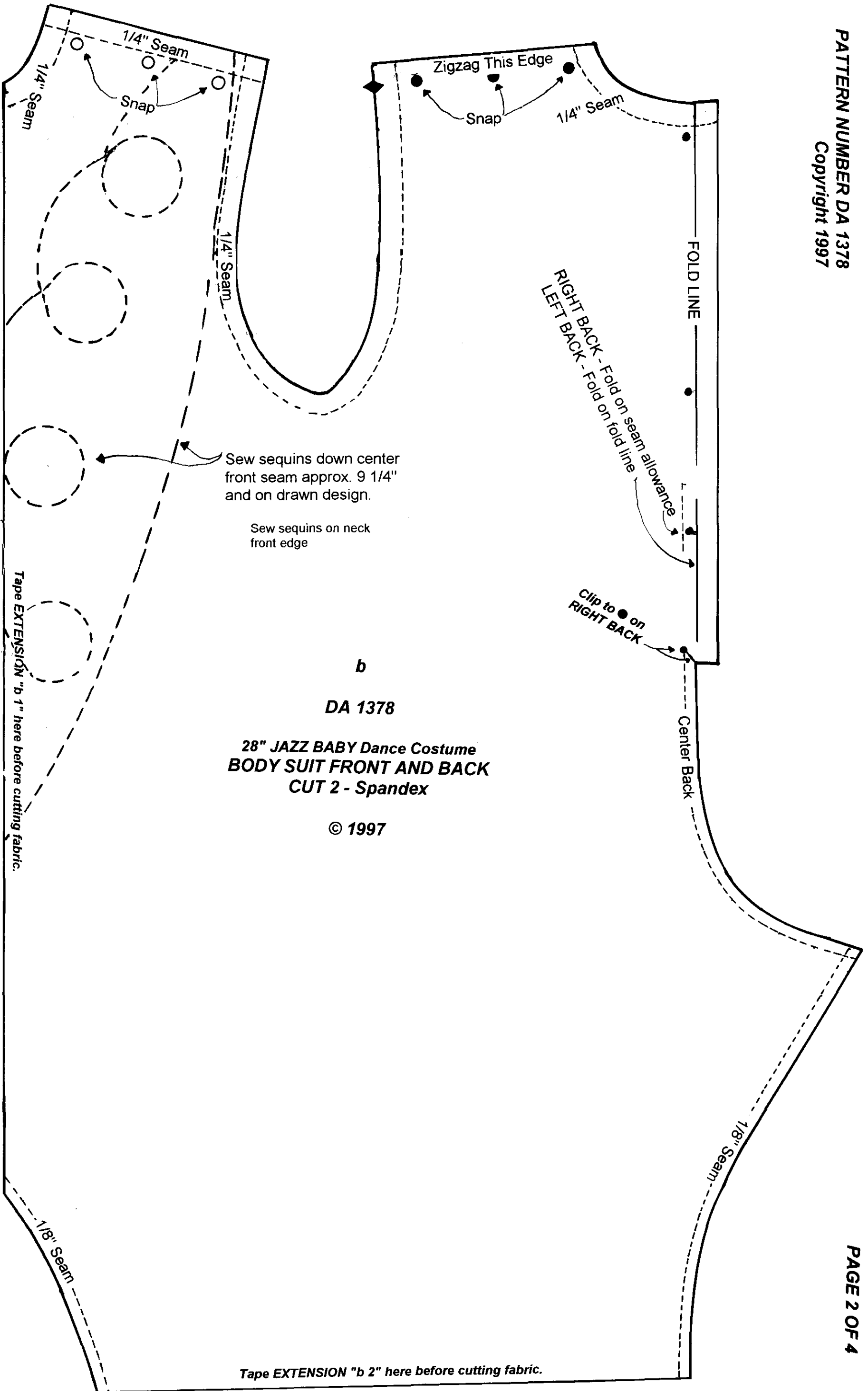
22. Make a large bow with glittered tulle. Add a drop of hot glue and glue bow to desired head location.

This pattern contains 8 pattern pieces. They are as follows:

- B - - Body Suit Front & Back
- B - - Body Suit Front & Back - Extension "B 1"
- B - - Body Suit Front & Back - Extension "B 2"
- C - - Sleeve
- C - - Sleeve - Extension "C 1"
- D - - Skirt
- E - - Front Neck/Shoulder Facing
- F - - Back Neck/Shoulder Facing

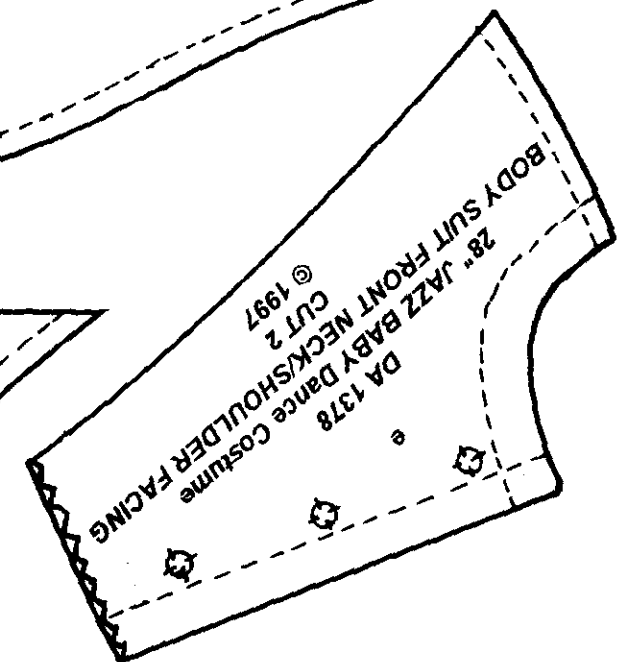
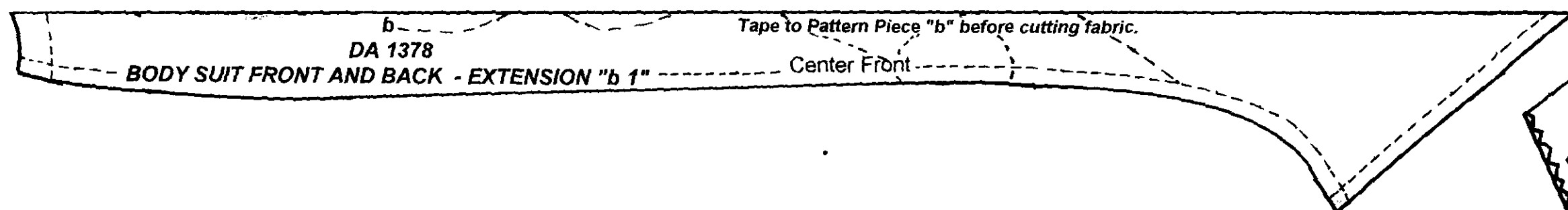
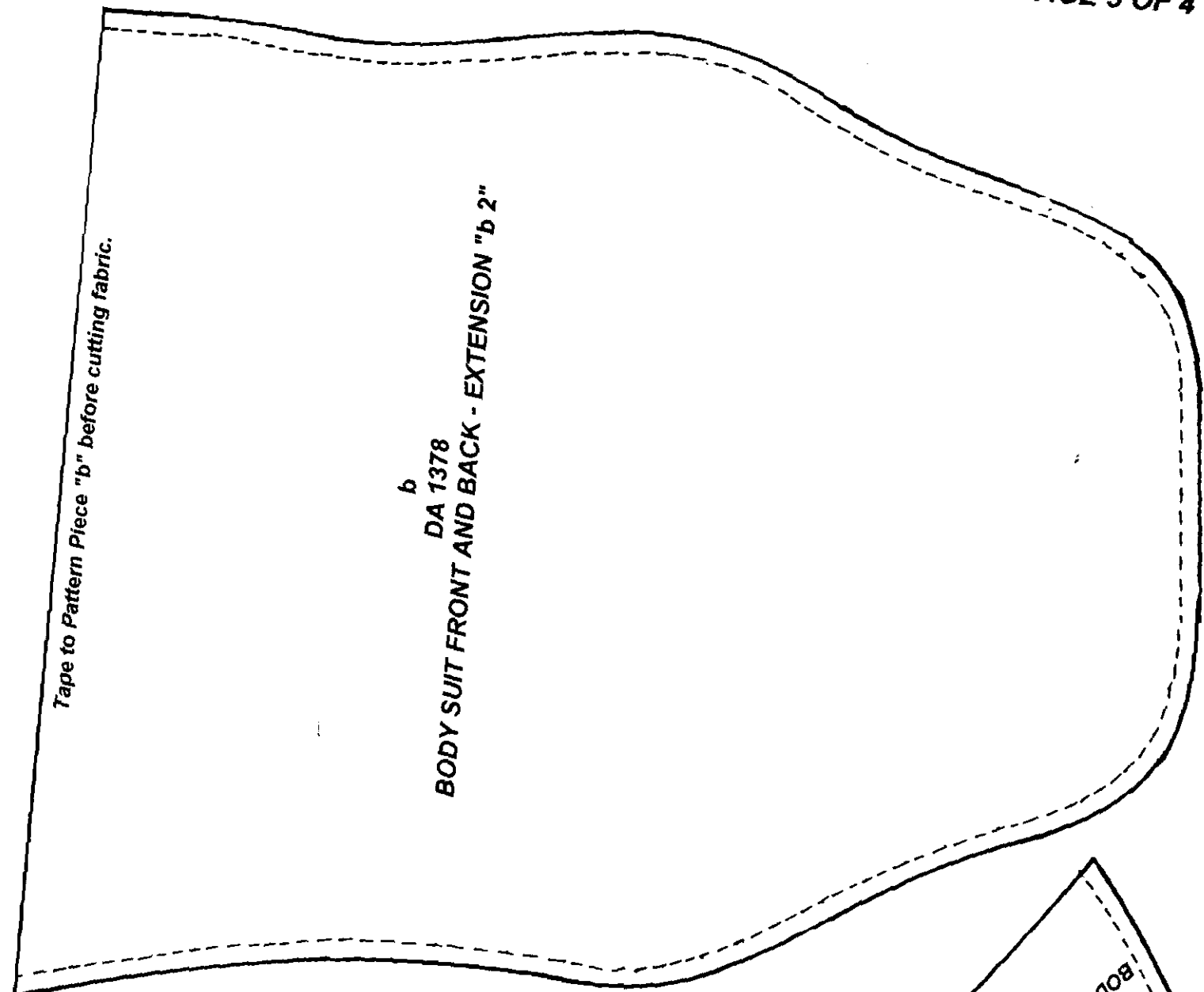
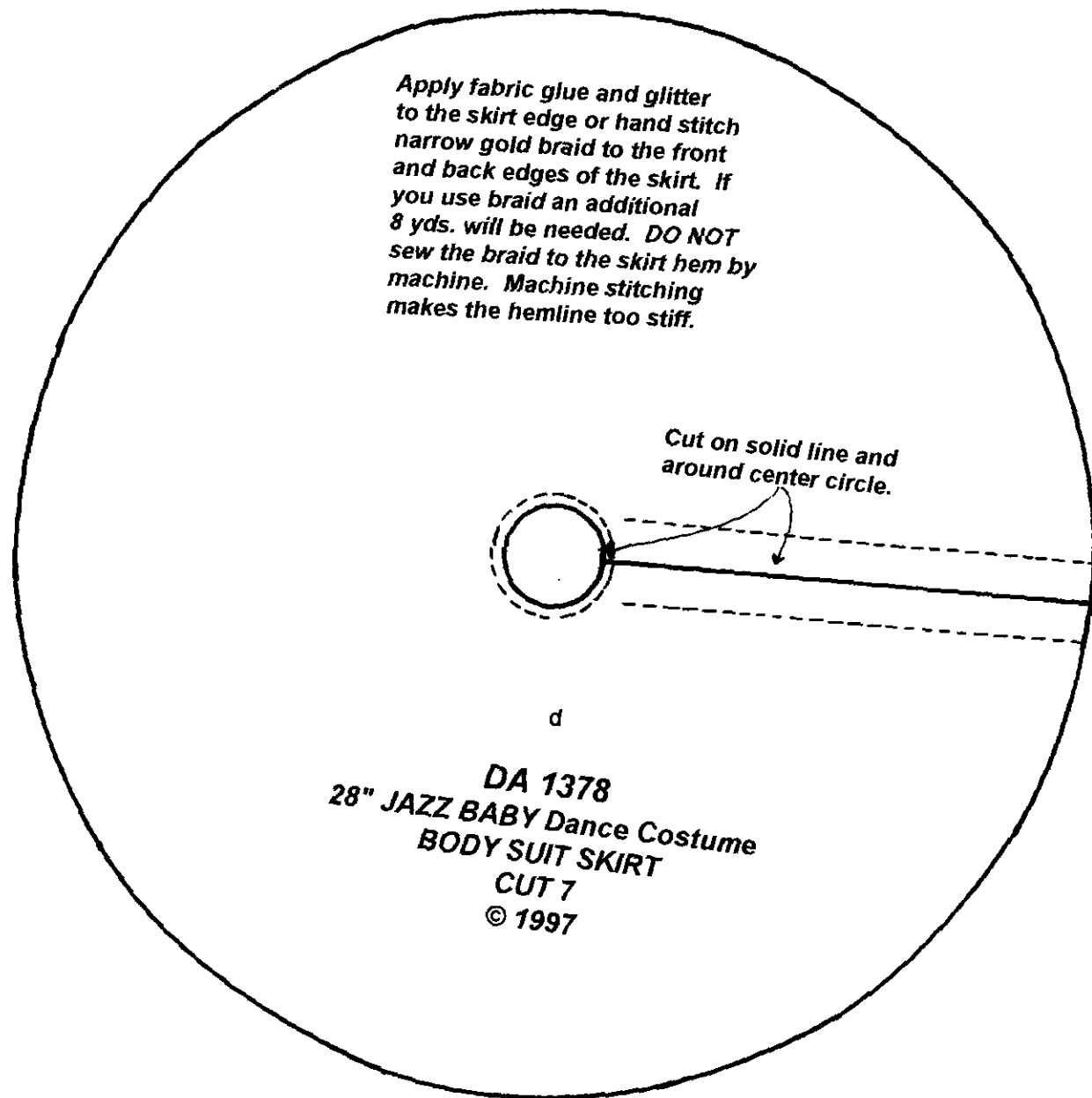
**** Indicates SPECIAL INSTRUCTIONS

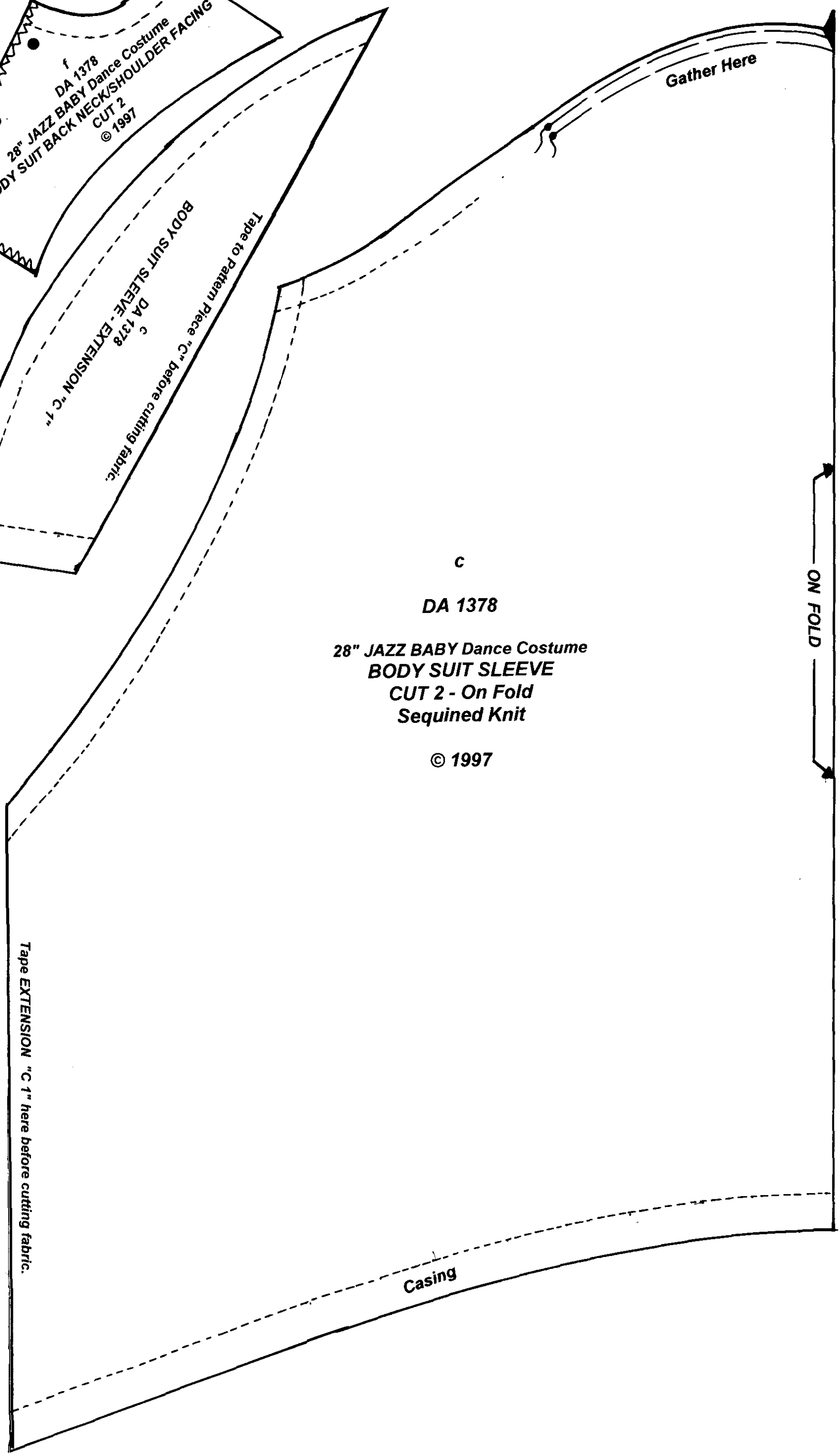
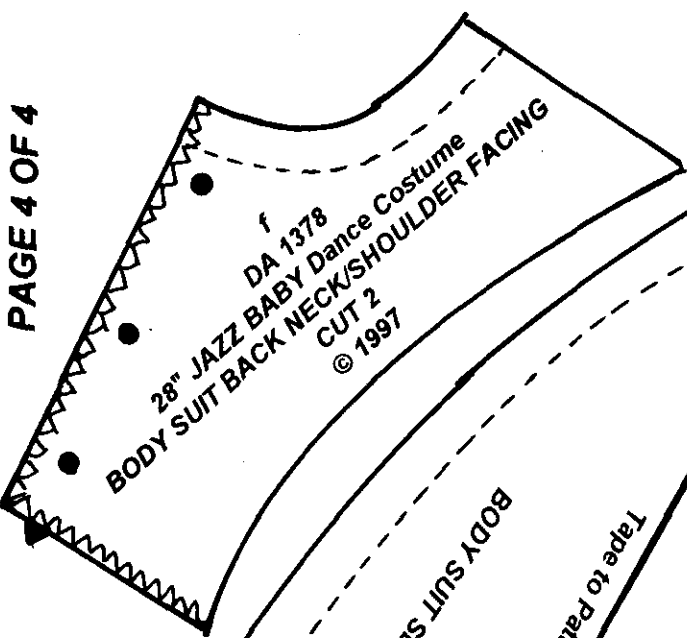




**28" JAZZ BABY Dance Costume
BODY SUIT FRONT AND BACK
CUT 2 - Spandex**

© 1997





DA 1378
28" JAZZ BABY Dance Costume
BODY SUIT SLEEVE
CUT 2 - On Fold
Sequined Knit
© 1997

Tape EXTENSION "C" 1" here before cutting fabric.