

**"SIMON" & "BERNARD" CLOWNS
TUXEDO JACKET, PANTS & TOP HAT
Copyright 1997**

(Use 24" Clown Heads, 20" Baby Shay Sh/Pl.,
24" Boy Clown Hands and 24" Boy Clown Shoes)

FABRICS & NOTIONS

3/4 yd. Cotton Stripe 45" Width - pants "Bernard"
1 yd. Cotton Print 45" Width - tuxedo jacket "Bernard"
1/8 yd. Cotton Print 45" Width - bow tie "Bernard"
1/2 yd. Cotton Print 45" Width - pants "Simon"
1/2 yd. Cotton Print 45" Width - tuxedo jacket "Simon"
1 yd. Cotton Print 45" Width - necktie "Simon"
1/3 yd. Cotton Print 45" Width - top hat
1/8 yd. Stripe T-Shirt Knit - leggings
5 Large Decorative Buttons - jacket
5 Small Snaps - jacket, pants

READ ALL INSTRUCTIONS BEFORE CUTTING FABRIC

NOTE: 1. All seams are 1/4" unless otherwise indicated.

2. All pieces are sewn with right sides together unless otherwise indicated.

3. Pattern pieces "E", "L", "M", and "O" have extensions due to their large sizes.

Tape each pattern piece and its corresponding extensions together before cutting fabric.

TUXEDO CONSTRUCTION:

1. Sew jacket fronts to the jacket back at the shoulder seams and the side seams. Repeat for lining.

2. Sew two rows of gathering stitches across the sleeve tops. Sew sleeves together at the underarm seams. Sew two rows of gathering stitches across the sleeve tops. Pull up threads to fit the armhole. Pin and sew sleeves to jacket, easing the sleeve fullness into the armholes. The sleeve should be sewn in smooth and not gathered.

3. Sew collar "D" at the ends. Trim end seams, turn and press. Matching notches, pin collar to neckline.

4. With right sides together, sew the jacket lining to the jacket at the neck opening. Thus enclosing the collar. Trim neck seam, turn and press.

5. Sew tuxedo tails. Trim seams, turn and press. Pin and sew the tails to the jacket back, matching notches, and leaving the jacket lining free.

6. Hand stitch the bottom of the jacket lining to the jacket. Zigzag or serge stitch around the armholes attaching the lining armholes to the jacket armholes.

**PATTERN NUMBER DA 1375
BODY PATTERN DA 1361**

**THE
DOLLING
ARTWORKS**
RT. 9 BOX 119
HWY 274
SEVEN POINTS, TX. 75143
TEL. 903-432-9426
FAX. 903-432-9502
ORDERS ONLY
800-886-3655

7. Hem sleeves and sew snaps and buttons on jacket front, tails and sleeves. **See Pattern For Placement.**

PANTS CONSTRUCTION:

8. Sew the pants front from dot to the front crotch seam. Fold and press along the fold line. Top stitch the fly to the right front. Fold in pleats and staystitch in place. Press pleats toward the center front seams.

9. Sew the pants backs together at the center back seam.

10. Sew the pants front to the pants back at the side seams. Then sew the waistband ends, trim seams, turn and press.

11. Pin and sew the waistband to pants top, leaving the waistband facing free. Fold under seam allowance on facing and hand stitch to the pants/waistband seam.

12. Hem pants legs with a blind stitch. Press.

13. Sew snaps on pants front.

NECKTIE CONSTRUCTION - "SIMON"

14. OPTIONAL: Satin stitch a fabric picture panel on the bottom area of the tie, before construction.

15. Fold and press under the seam allowances at the sides of the necktie and

across the narrow end. Then fold and press again on the fold lines. **See Pattern For Placement .**

16. Hand stitch the tie together at the center back seam allowance.

17. Close each end of the tie with a hand stitch.

BOW TIE CONSTRUCTION - "BERNARD"

18. Sew the long sides together, turn and press.

19. Roll the long seam to the center back of the tie. Then turn in the seam allowance on the short ends and carefully close with hand stitches.

20. Sew the bow knot "G" together at the sides, turn and press. Leave ends open.

Wrap the bow knot around center of bow, hand stitching the ends together at the bow back.

TOP HAT CONSTRUCTION - "BERNARD"

21. Sew seven of hat piece "K" together at the side seams. Press seams. Repeat for lining.

22. WRST, sew the crown to the hat top.

23. WRST, sew the hat and hat lining together at the brim. Turn under the seam allowance around the top edge of the hat lining. Pin and hand stitch the hat lining to the hat crown at the crown/hat seam.

24. Then top stitch 1/8" on each side of the hat seams and around the edge of the hat brim.

25. Decorate with flowers.

BIB CONSTRUCTION - both clowns

26. Sew bib to bib lining with right sides together. Trim seam to 1/8", turn and press.

27. Matching notches in the center, sew the bib neck band "I" to the bib, leaving the neck band facing free.

28. Turn under the seam allowance of the neck band facing and sew the facing edge to the previously sewn seam, thus enclosing the top bib edge.

**This pattern contains 20 pattern pieces.
They are as follows:**

A - -TUX JACKET FRONT
B - -TUX JACKET BACK
C - -TUX SLEEVE
D - -TUX COLLAR
E - - NECKTIE - "SIMON"
E - - NECKTIE EXTENSION - 2
E - - NECKTIE EXTENSION - 3
F - - BOW TIE TEMPLATE - "BERNARD"
G - -BOW KNOT - "BERNARD"
H - -BIB
I - - BIB NECK BAND
J - - HAT CROWN
K - -HAT SIDES
L - - PANTS FRONT
L - - PANTS FRONT EXTENSION
M - -PANTS BACK
M - -PANTS BACK EXTENSION
N - - PANTS WAISTBAND TEMPLATE
O - - TUX TAILS
O - - TUX TAILS EXTENSION

"PAPAW" CLOWN TUXEDO SHIRT, BOW TIE & TOP HAT

Copyright 1997

(Use 24" Clown Heads, 20" Baby Shay Sh/Pl.,
24" Boy Clown Hands and 24" Boy Clown Shoes)

"PAPAW" FABRICS AND NOTIONS

1/2 yd. Cotton Print 45" Width - shirt

1 yd. Corduroy Print 45" Pinwale - tux jacket

1/2 yd. Wool Tweed 45" - pants

1/4 yd. Bow Tie

1/4 yd. Cotton Stripe - legging

14" x 4" Fabric - hat band

Scraps - patches on jacket, pants

7 Small Snaps - jacket, shirt, pants, bow tie

Large Sunflower - jacket lapel

Large Button - tux jacket

Hot Glue Gun & Glue Sticks

Feather and Button - hat

Scalpel Knife or Xacto

Small Quaker Oats Box - top hat

Craft Glue

Black Glitter - Hat

Black Spray Paint - Hat

1 Small Sheet of Poster Board - Hat

PATTERN DA 1375

BODY PATTERN DA 1361

**THE
DOLLING
ARTWORKS**
RT. 9 BOX 119
HWY 274
SEVEN POINTS, TX. 75143
TEL. 903-432-9426
FAX. 903-432-9502
ORDERS ONLY
800-886-3655

SPECIAL INSTRUCTIONS FOR "PAPAW"

1. BODY PATTERN DA 1361 - - Lengthen front and back legs 4" before cutting fabric.
2. BODY PATTERN DA 1361 - - Lengthen arms 2" before cutting fabric.
3. Tape all pattern pieces and its corresponding extensions together before cutting fabrics.
4. TUX SLEEVE "C" - - Lengthen lower edge 2" before cutting fabric.
5. PANTS FRONT "L" - - Lengthen legs 4" before cutting fabric.
6. PANTS BACK "M" - - Lengthen legs 4" before cutting fabric.

TUXEDO CONSTRUCTION - - "PAPAW"

(Use pieces "A", "B", "C", "D")

1. thru 6. Same as Simon and Bernard.
7. Same as Simon and Bernard except buttons on the tux jacket sleeves are optional for Papaw.

PANTS CONSTRUCTION - - "PAPAW"

(Use pieces "L", "M", "N")

8. thru 13. Same as Simon and Bernard.

BOW TIE - - "PAPAW"

(Use pieces "T", "U", "V")

27. Sew bow tie "T" together, leaving an opening between the dots for turning. Trim seams, clip where indicated, turn and press. Close opening with a blind stitch.

28. Fold tie in the center then sew on the stitch line. **See Pattern For Stitch Line Placement.**

29. Open out the ends of the tie and position the center of the tie on top of the seam just stitched. Tack to hold in place.

30. Sew the bow knot "U" together at the side seams, turn and press.

31. Fold pleats and hand tack in place. **See Pattern For Placement.**

32. Wrap bow knot around the center of the tie. Turn under seam allowance on one end of the knot and stitch the ends together. Avoid catching the bow tie in the stitches.

33. Sew neck band "V" together on the long edge, turn and press. Turn in the ends and hand stitch.

34. Slip the neck band through the back of the bow knot and centering the bow on the band.

35. Sew a snap or a hook and eye on the ends of the neck band.

SHIRT CONSTRUCTION - - "PAPAW"

(Use pieces "P", "Q", "R", "S", "W" "V") -

36. Sew tucks on shirt front "P". Press tucks toward the side seams. **See Pattern For Placement.**

37. Turn under edge of center front facings 1/8" and sew in place.

38. Sew the fronts to the back at the shoulder seams.

39. Sew two rows of long stitches across the top of the sleeves. Match the center sleeve notch to the shoulder seam. Pin and sew, easing the sleeves into the armholes. The sleeves should be smooth and not gathered.

40. Sew the side seam and the under arm seams to the . Fold under the seam allowance from the and press.

41. WRST, fold the cuff piece "R" in half and sew at each end. Turn and press.

42. WRST, sew the sleeve cuffs to the sleeve, leaving open the underside of the cuff. Fold under the seam allowance of the back of the cuff and hand stitch in place.

43. Sew collar "S" together. Trim corners and clip curves, turn and press.

44. Matching notches, pin collar to shirt neck. Fold shirt front facing back over the collar and pin in place. Use piece "V" and cut on bias for neck binding. Pin bias neck binding on the neck seam allowance extending the ends past the facings about 1/2". Sew the collar to the shirt. Trim seam, turn and press.

45. Turn under neck binding and blind stitch in place.

46. Top stitch the center front. **See Pattern For Placement.**

47. Sew a 1/8" hem on the shirttail.

48. Sew snaps where indicated.

TOP HAT CONSTRUCTION:

(Use Small Oatmeal Box - Approx. 5" Radius)

49. Remove the lid and bottom of an empty oatmeal box. Press lightly on the box to give it an oval shape. The oval ends will be the front and back of the hat.

50. Using the box as a template, trace around the box on a 7" x 8" piece of poster board.

51. Using a ruler, draw another line 1 1/4" larger than the box tracing. (See Diagram "A") This will be the hat brim.

52. Place the poster board on the edge of a table top, with one hand holding the poster board and the other pulling downward. This will slightly curl the poster board so the hat brim will turn up at the sides.

53. Cut out the inside oval to the box tracing line. Check for fit and trim if necessary. Then cut on the larger oval line or outside edge of hat brim.

54. Measure 3 3/4" from one end of the box and mark with a marker. This will be the front of the hat. Measure 3 1/2" on the opposite side of the box and mark. This will be the back of the hat. **See Diagram "B".**

55. With curled side up, take the brim and gently push it over the box top. Align the brim to the marks for the front and back of the hat. **See Diagram "C".**

56. Stick pins in the box to hold the brim in place. Glue the brim to the box, placing a bead of glue on the top inside edge and the bottom inside edge of the brim. Completely dry then remove pins.

57. Place a bead of glue around the top of the hat and turn the hat top down on a 4" x 5" piece of poster board. Place another bead of glue around the edge of the hat top. Let dry completely.

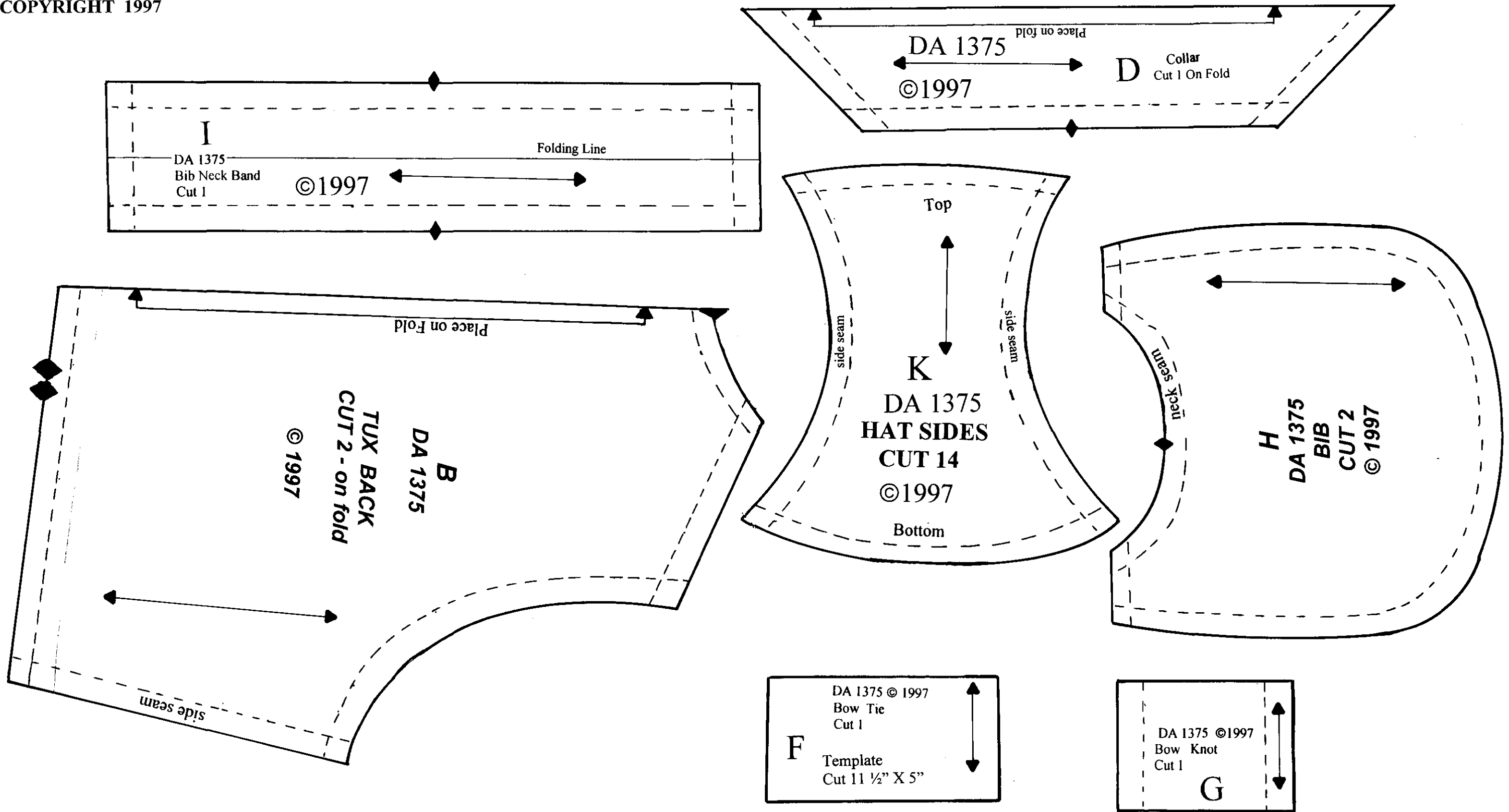
58. When dry, cut the excess of the hat top (poster board) off with a scalpel knife and also the excess box from the underside of the hat brim.

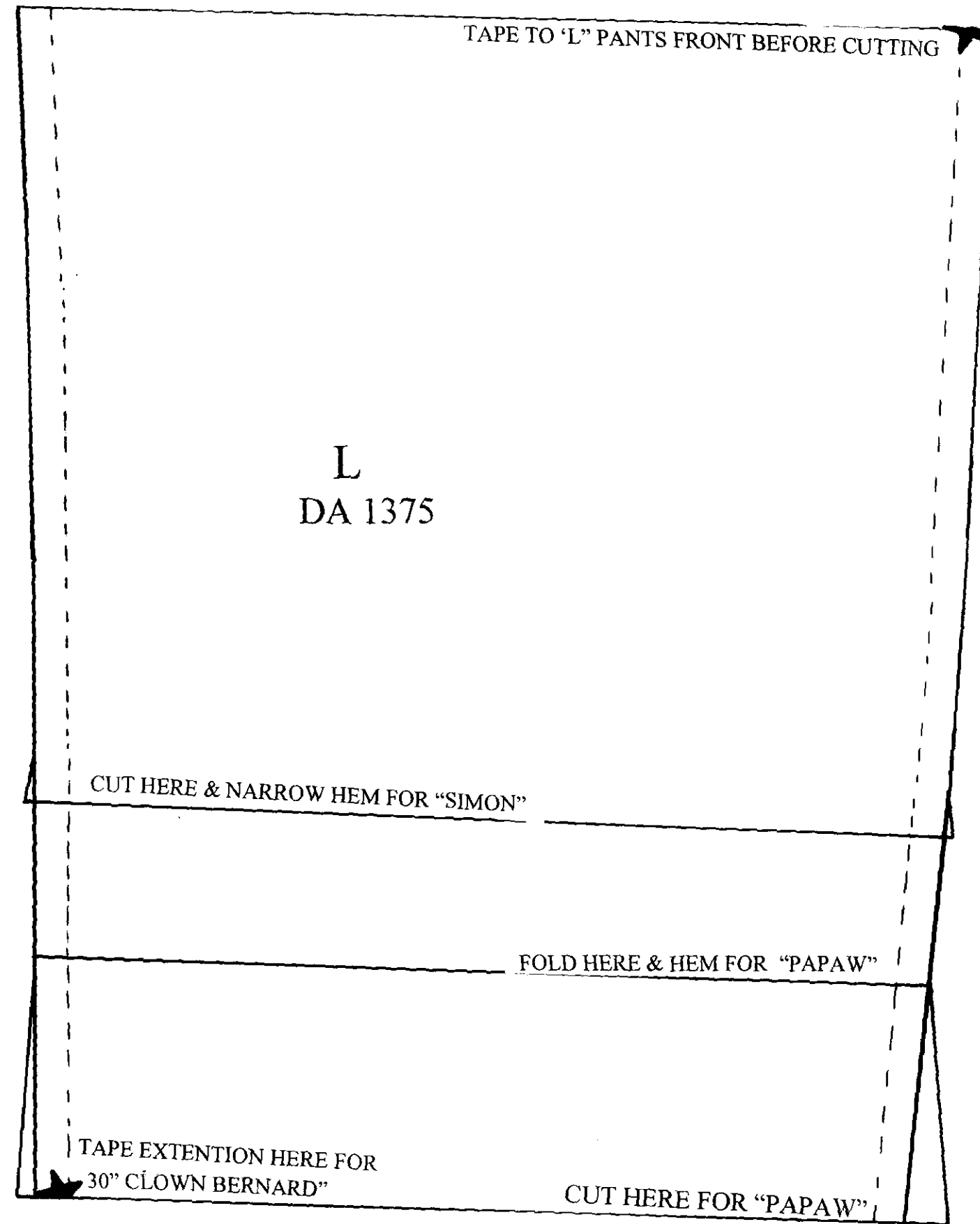
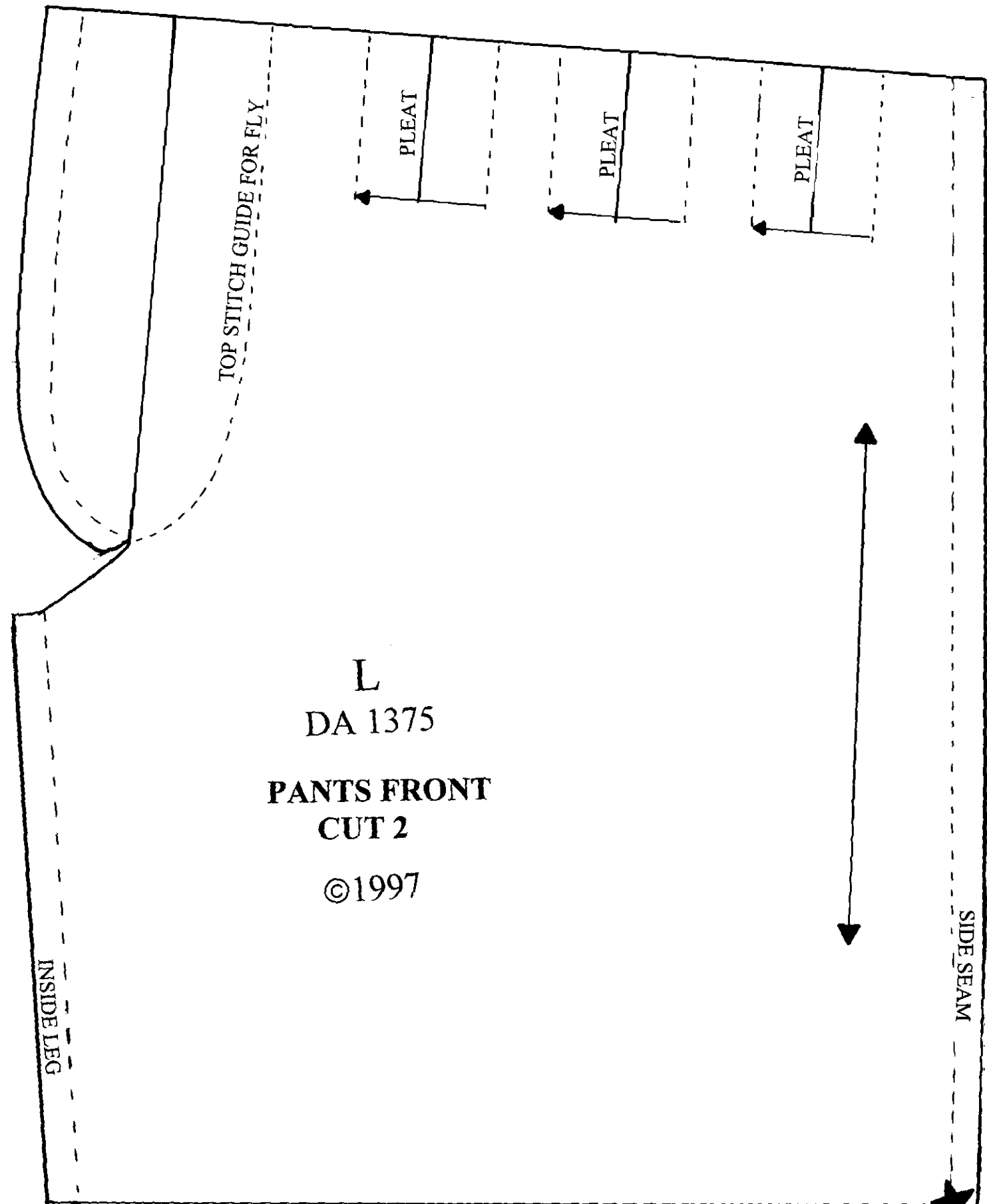
59. Coat the entire hat with craft glue. When glue is dry, cover entire hat with spray paint. Coat with glue once again and cover with black glitter.

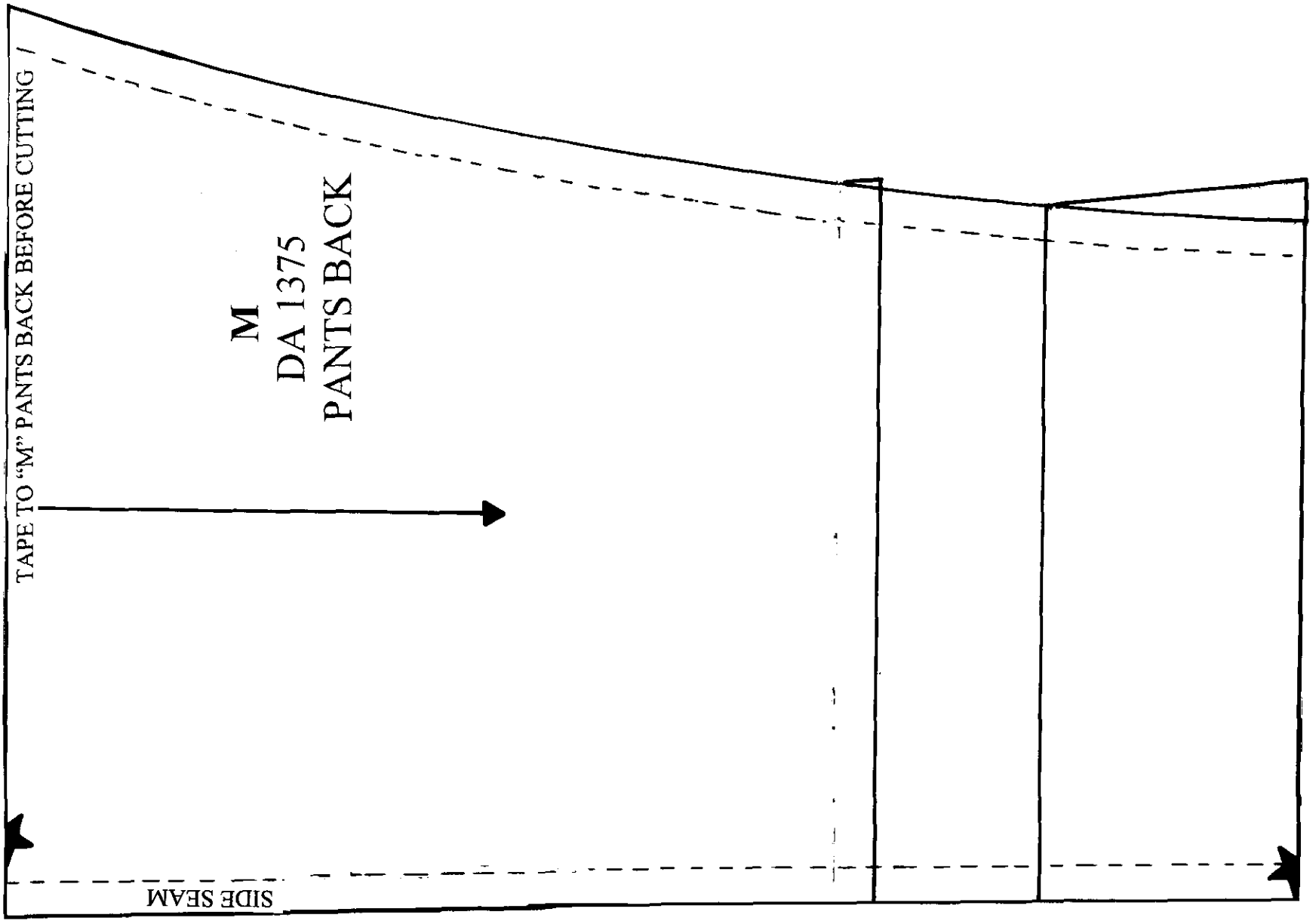
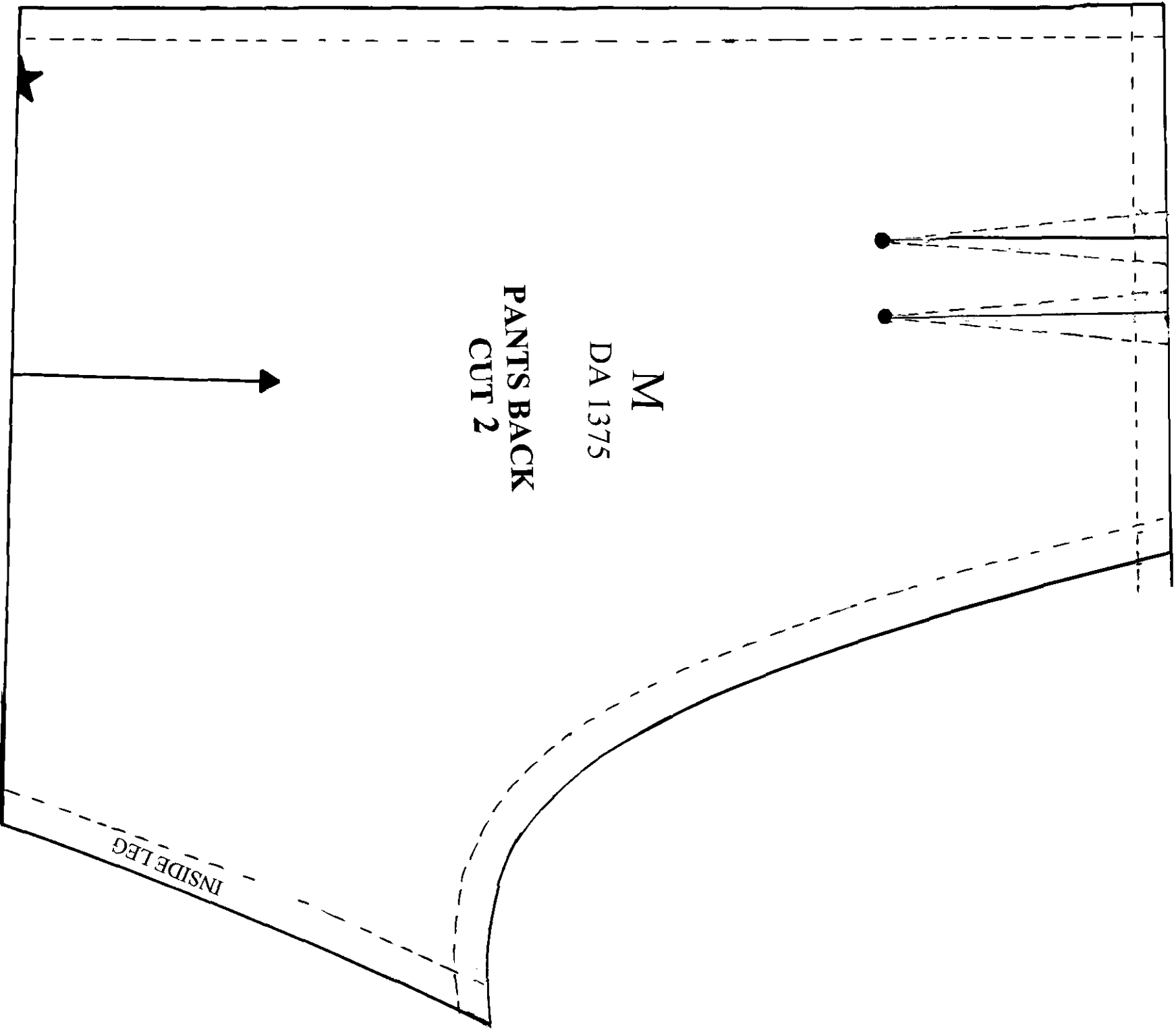
60. Fold hat band in half lengthwise and wrap around the hat crown. Fold under one end and lap over the remaining raw end. Hot glue in place.

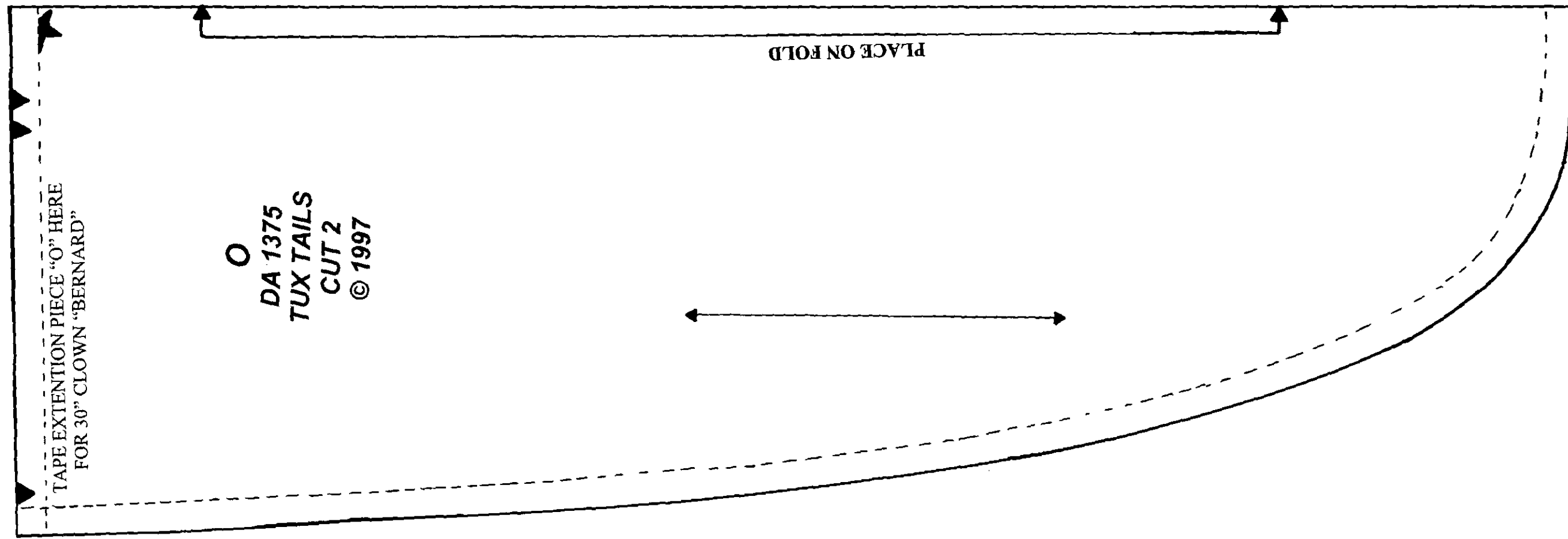
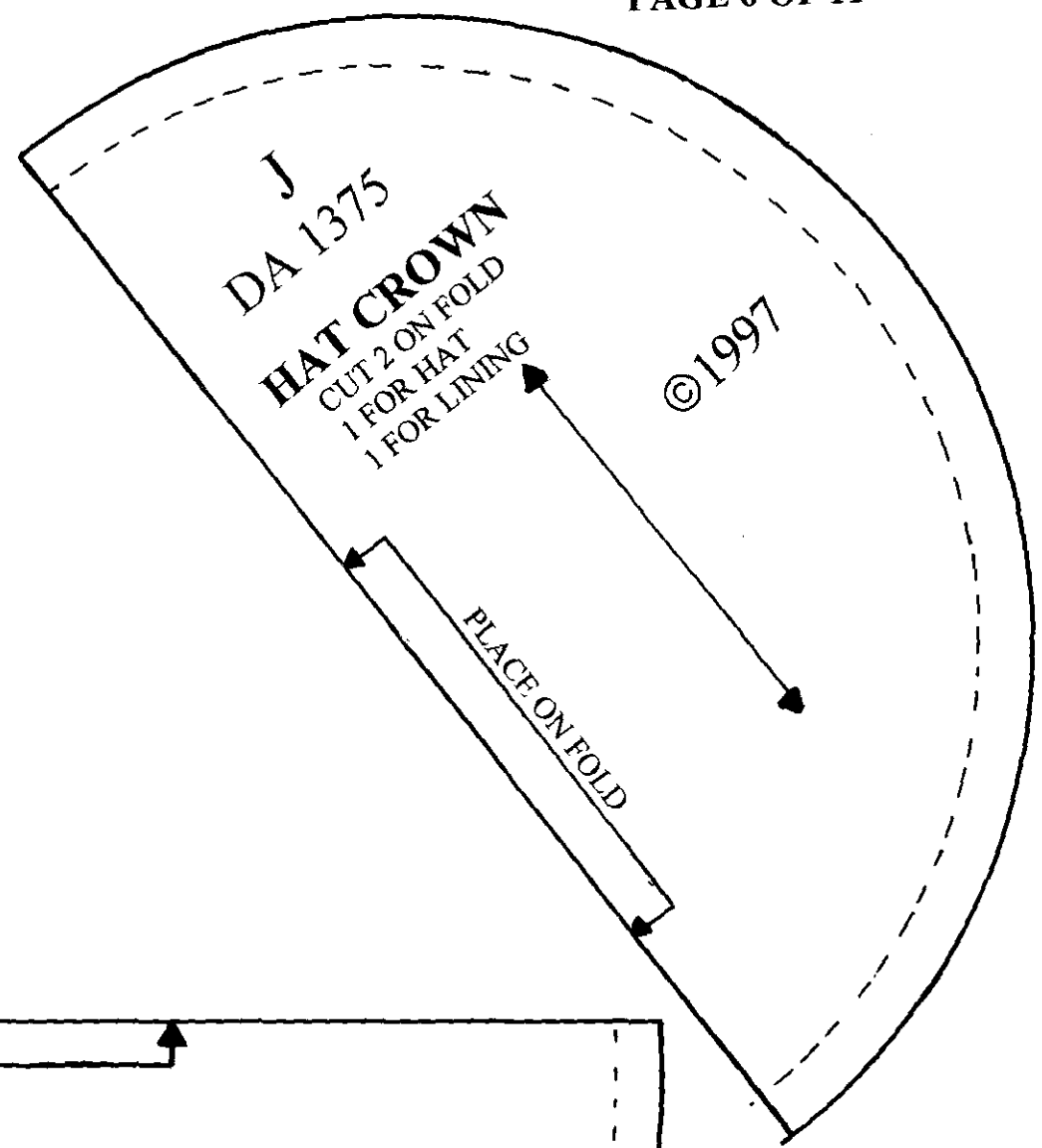
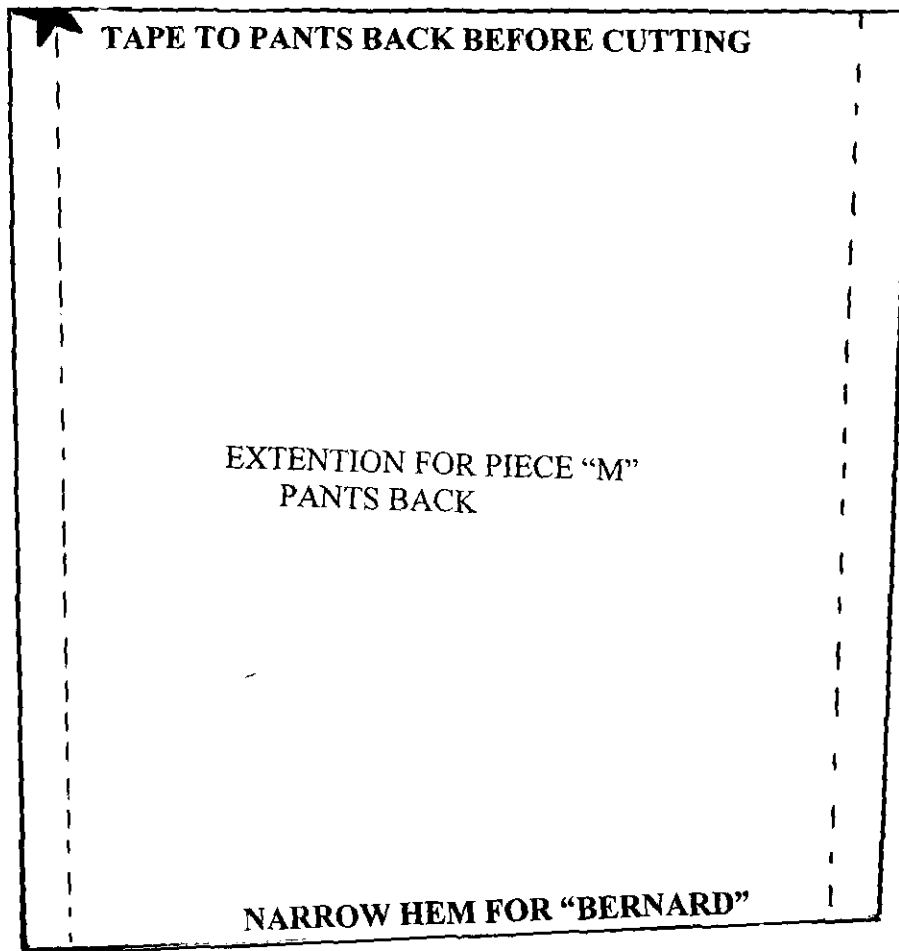
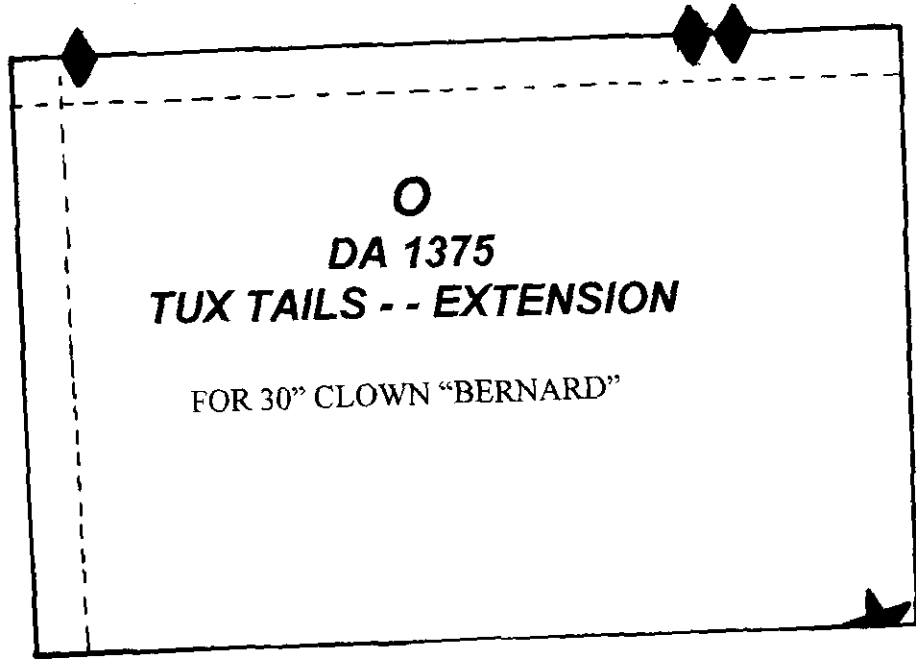
61. Hot glue feather and button in place. **This pattern insert contains 9 pattern pieces. They are as follows:**

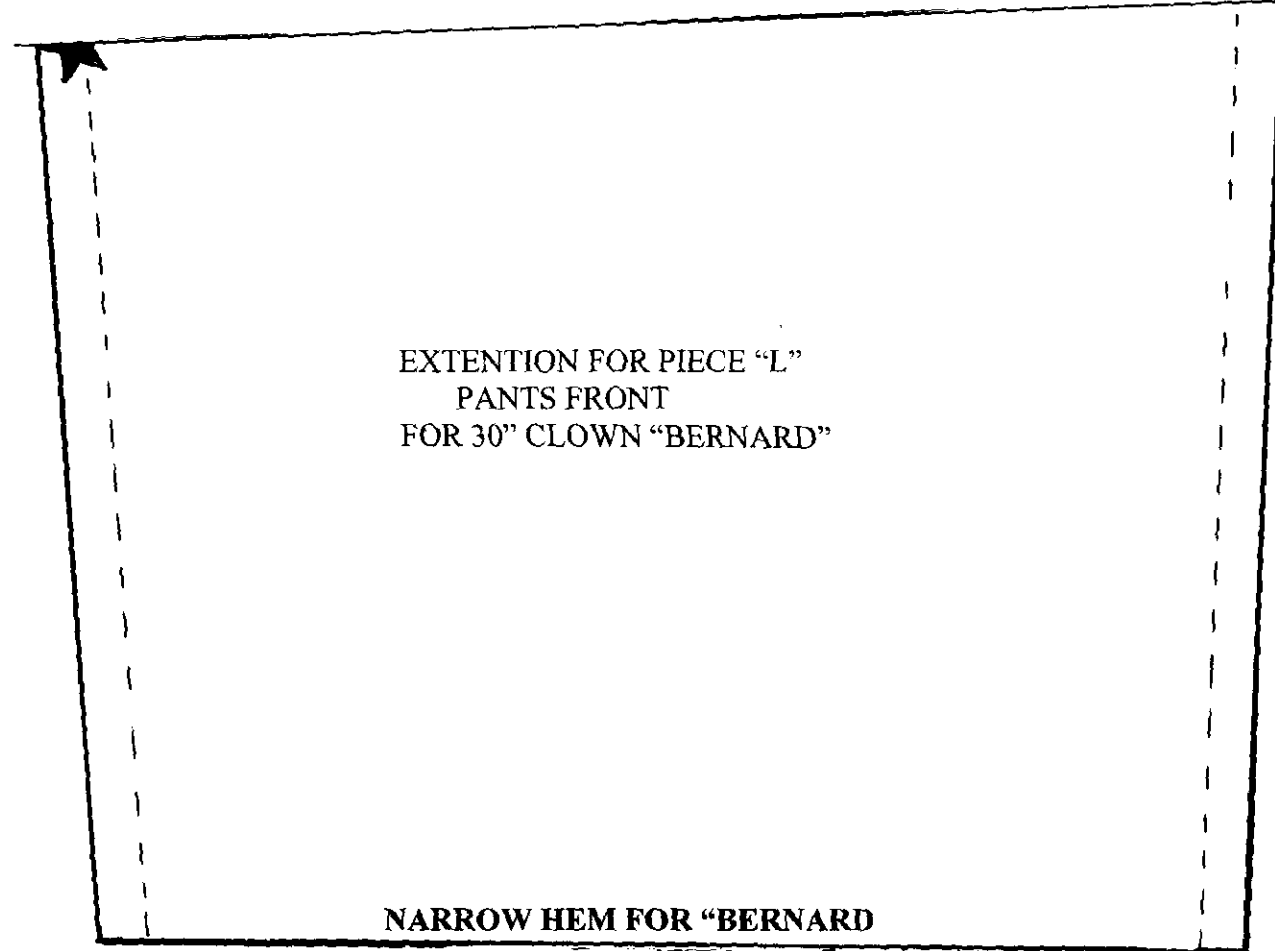
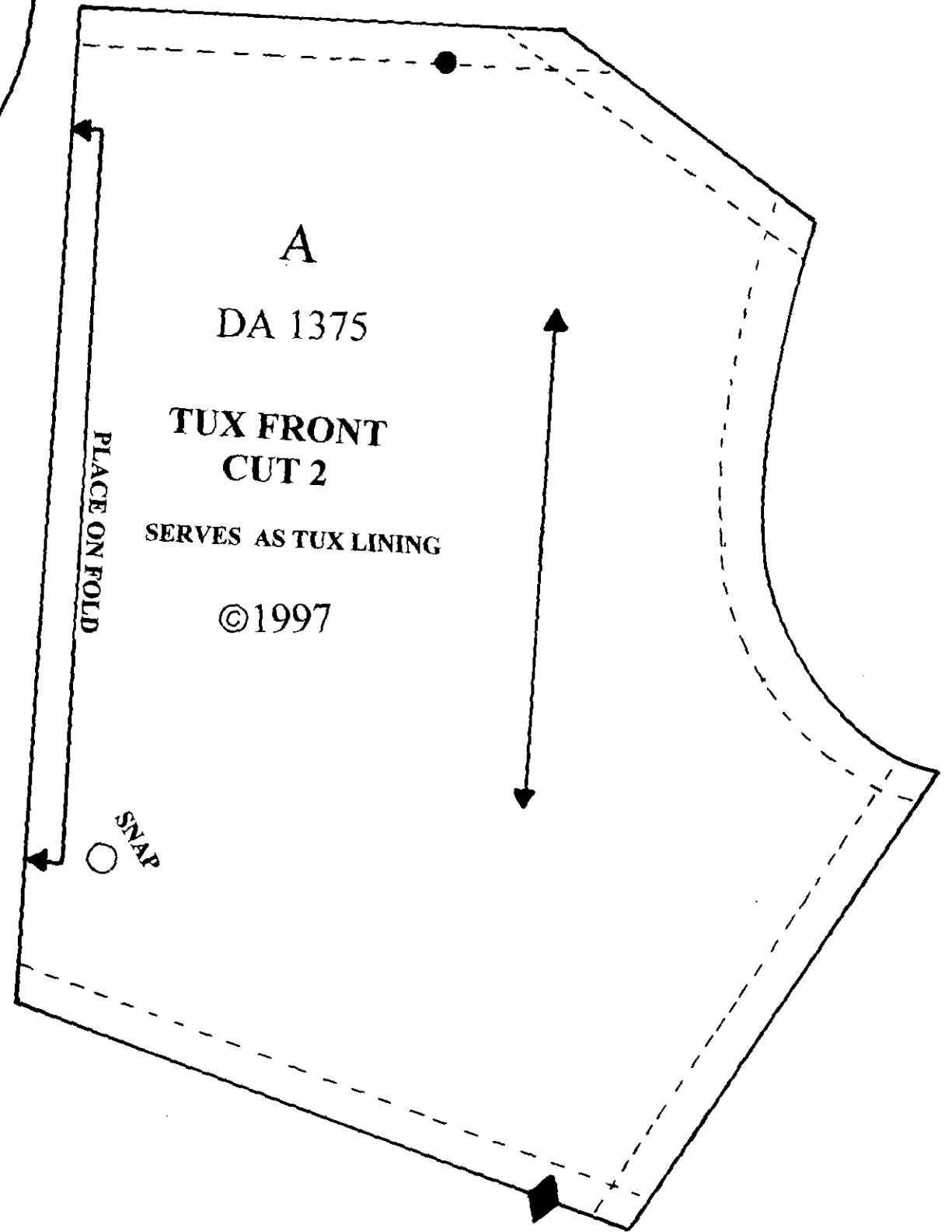
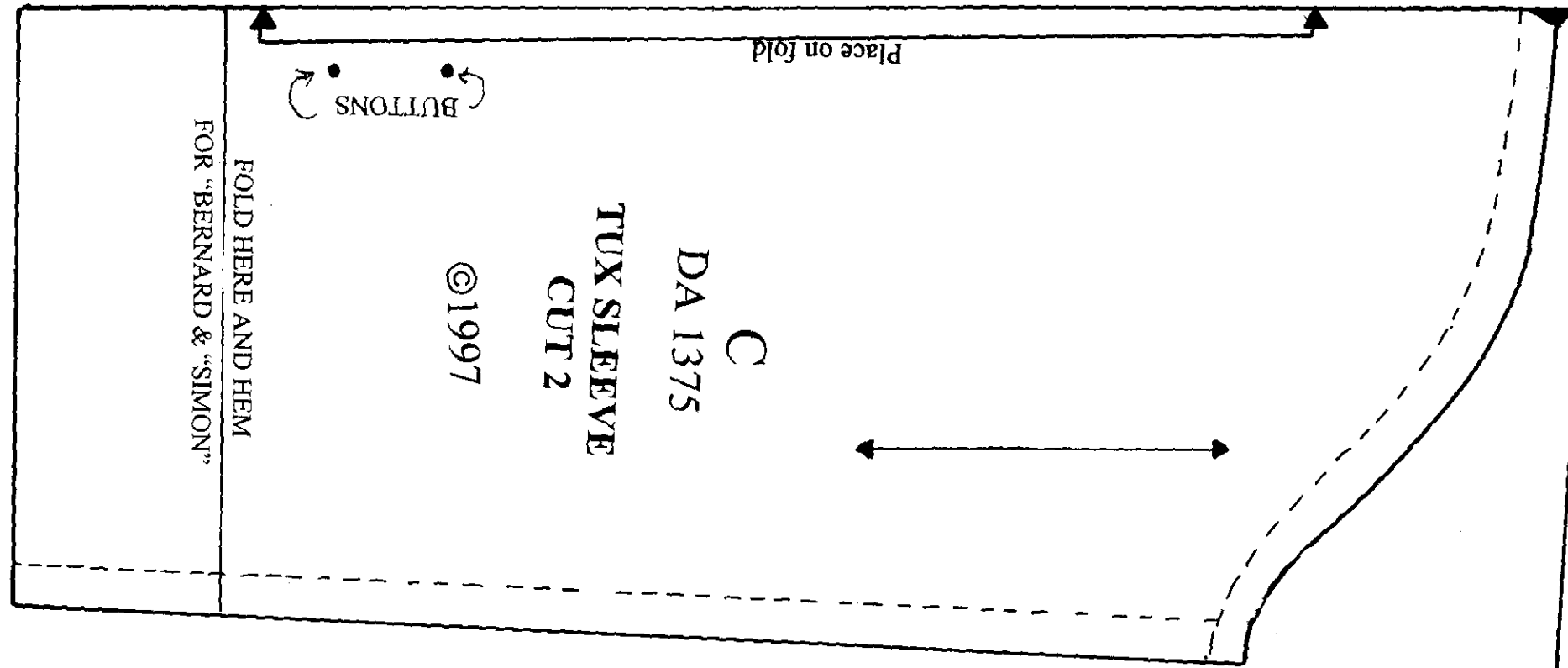
P - - SHIRT FRONT - "Papaw"
Q - - SHIRT BACK - "Papaw"
R - - SHIRT SLEEVE CUFF - "Papaw"
S - - SHIRT COLLAR - "Papaw"
T - - BOW TIE - "Papaw"
U - - BOW KNOT - "Papaw"
V - - BOW TIE NECK BAND - "Papaw"
 And Bias neck binding - "Papaw"
W - - SHIRT SLEEVE - "Papaw"
W - - SHIRT SLEEVE EXTENSION - "Papaw"







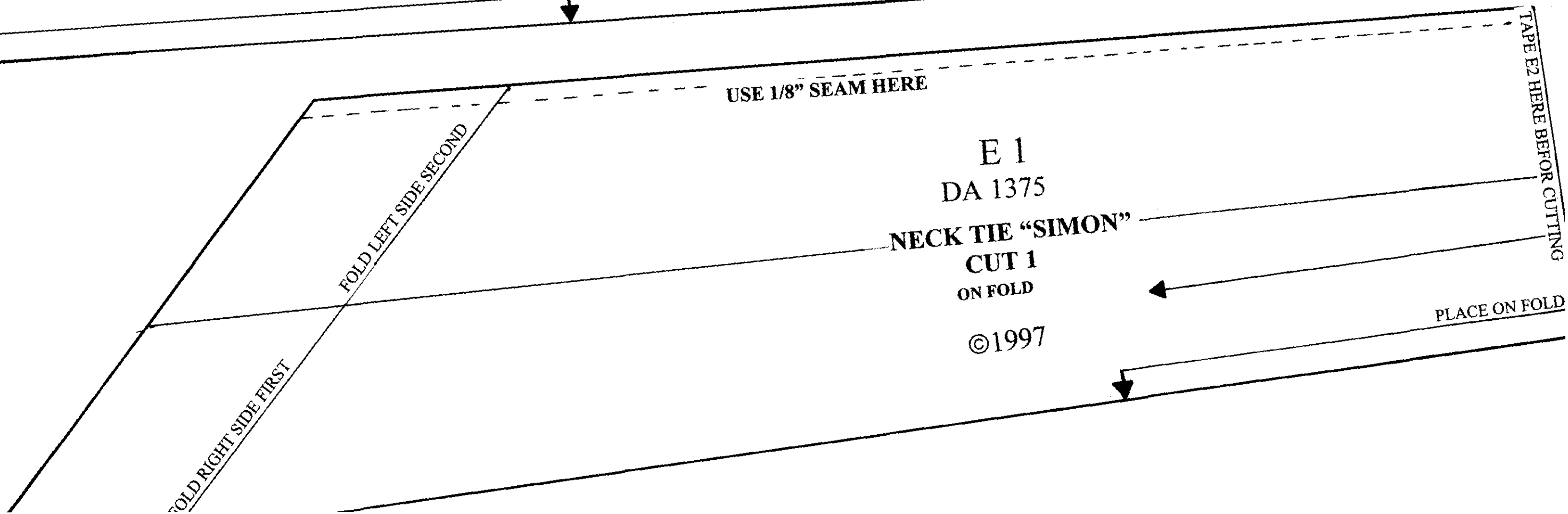
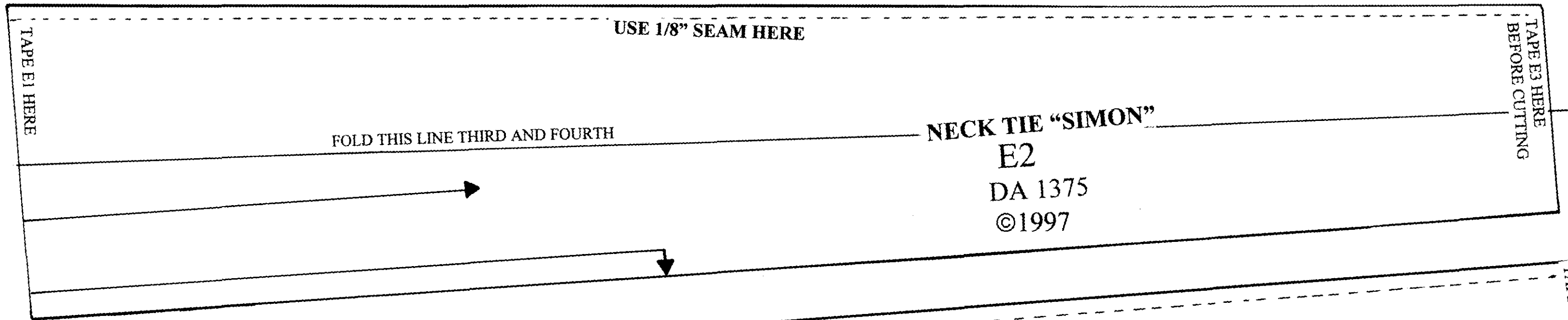


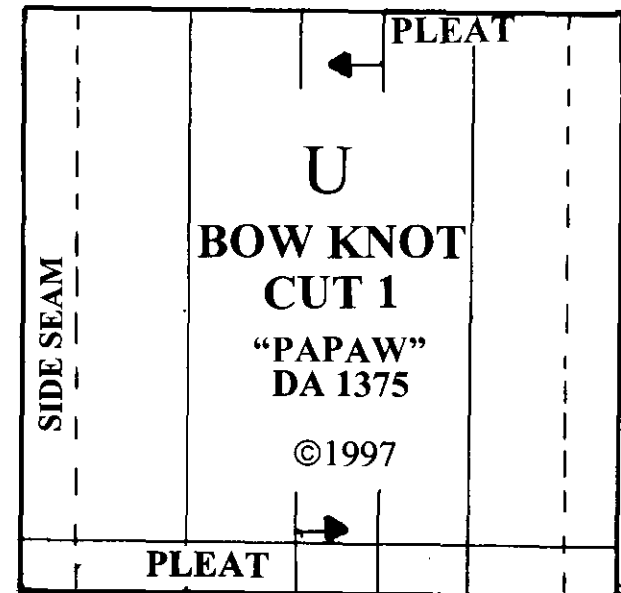
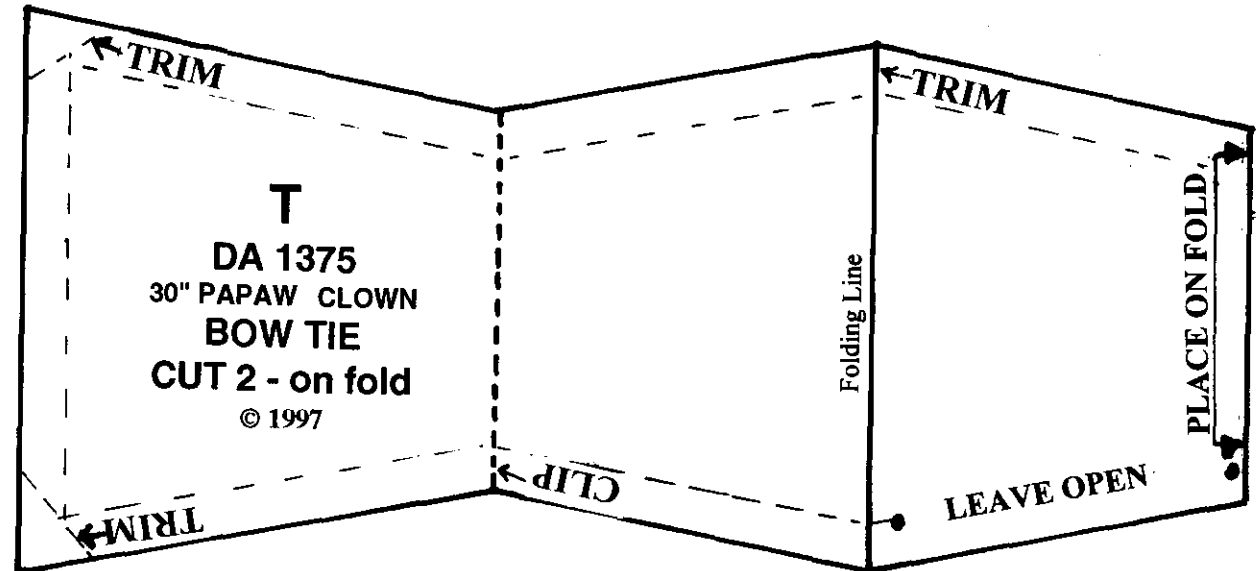
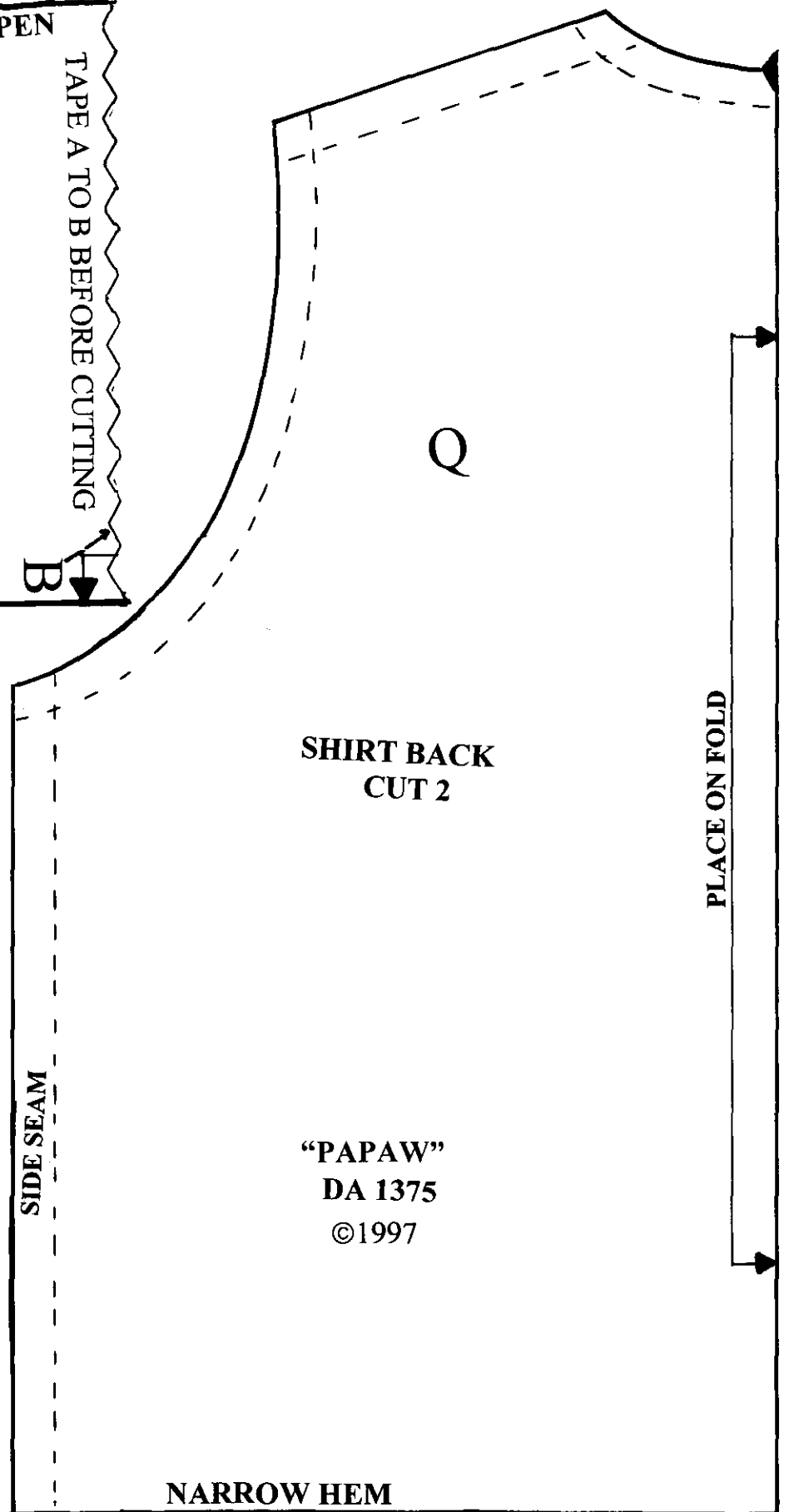
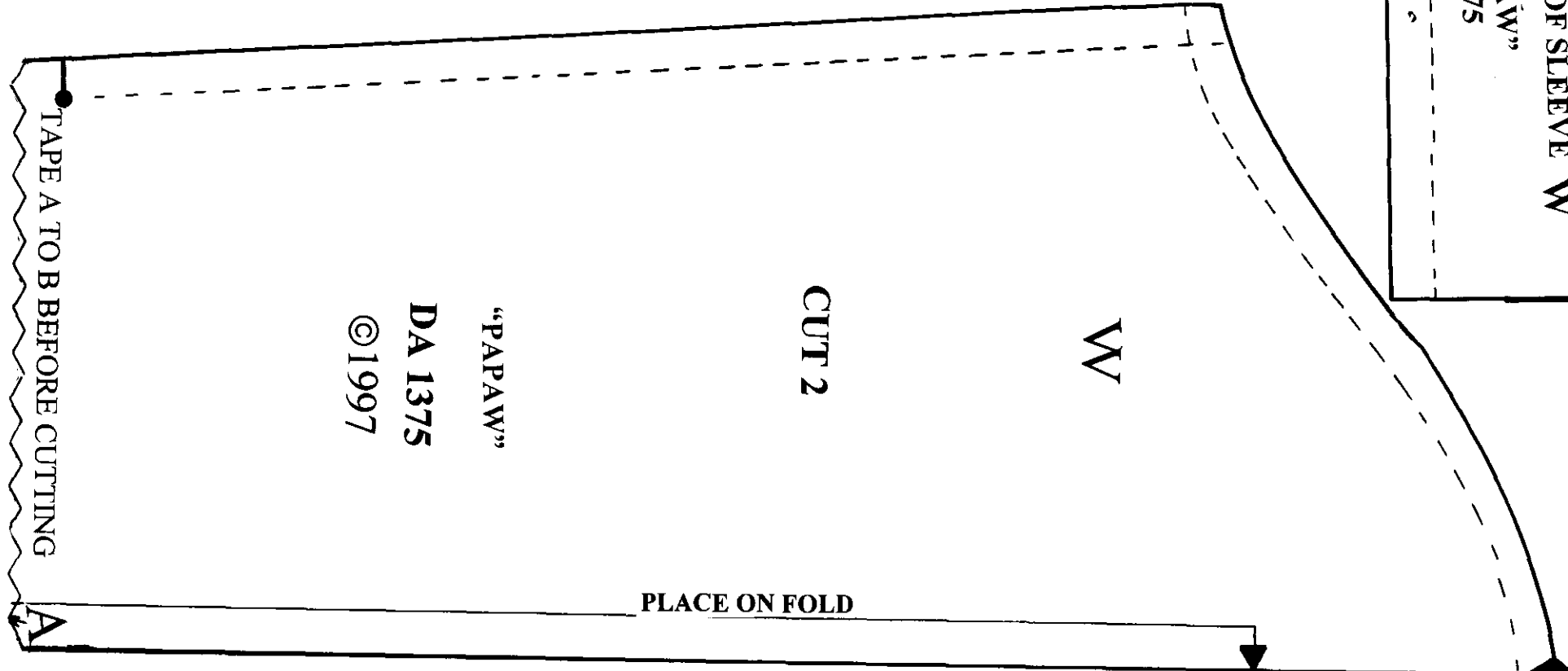
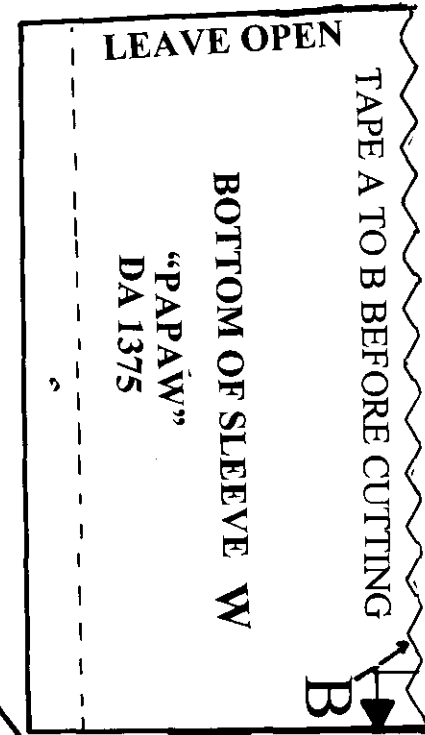
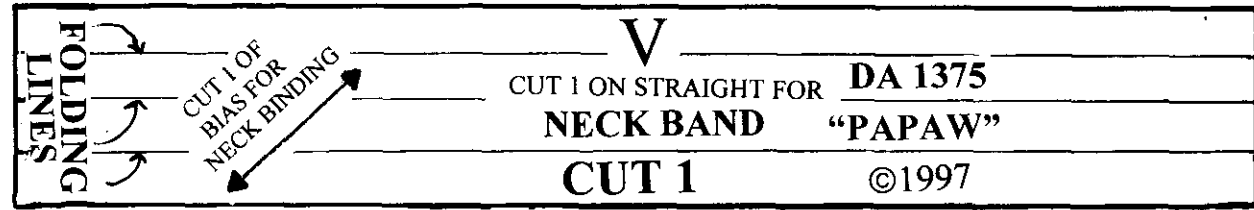


TEMPLATE
DA 1375 ©1997
Pants Waist Band N
Cut 1
Cut 1 @ 15" X 2 3/4"

PATTERN NUMBER DA 1375
COPYRIGHT 1997

©1997
E3
DA1375
NECK TIE "SIMON"
TAPE E2 HERE





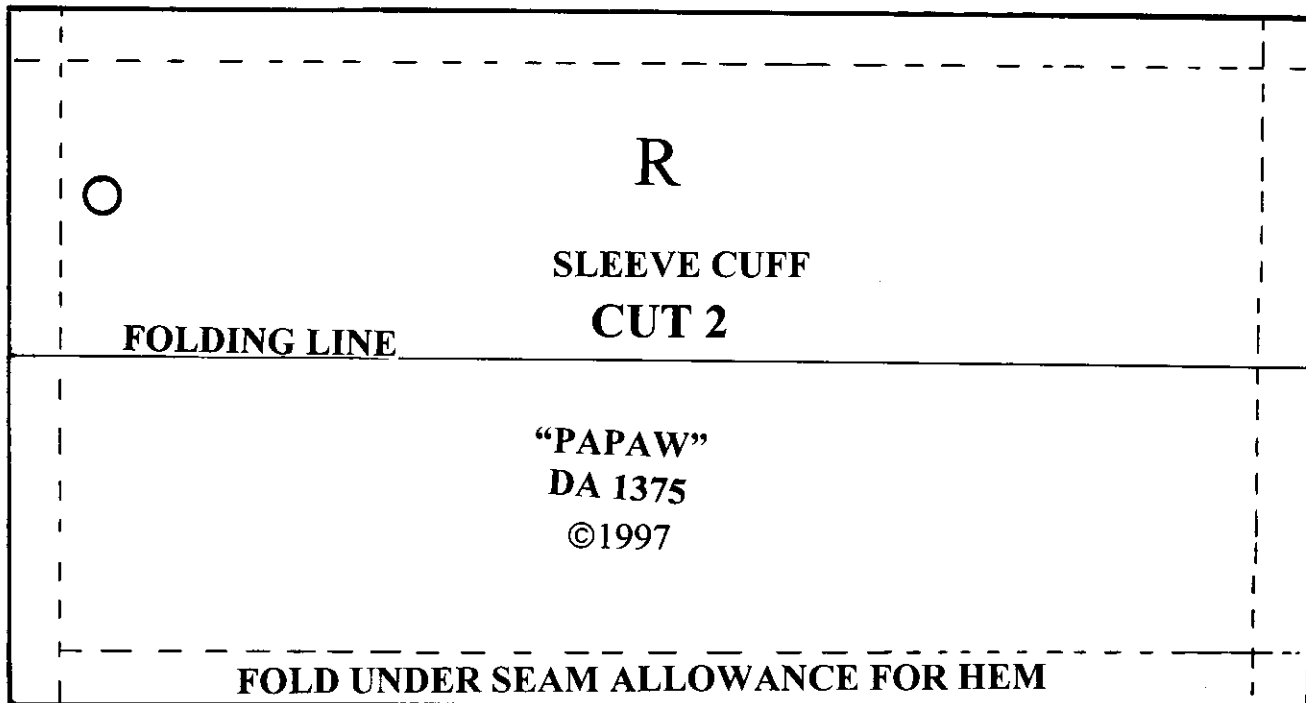
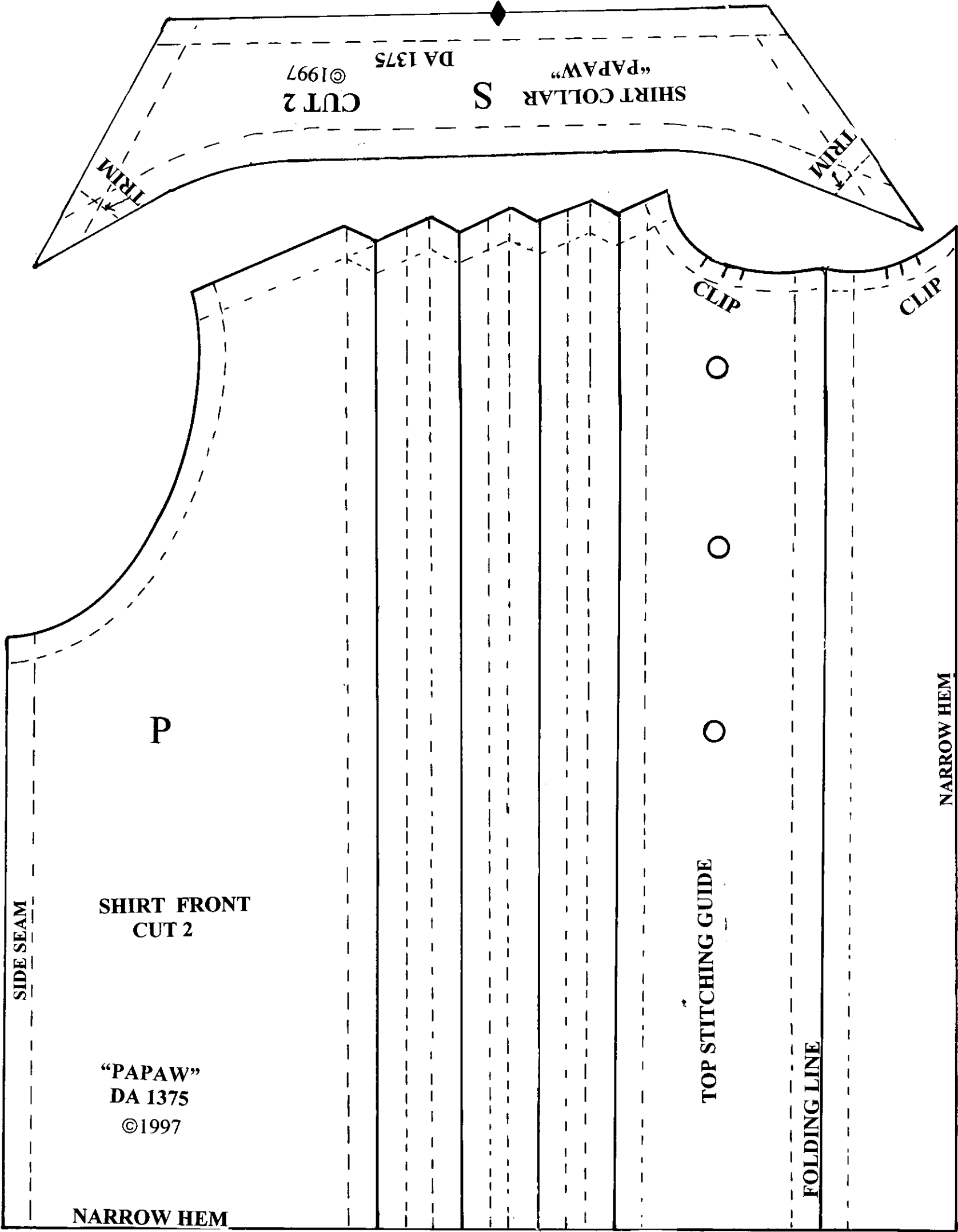


Diagram A

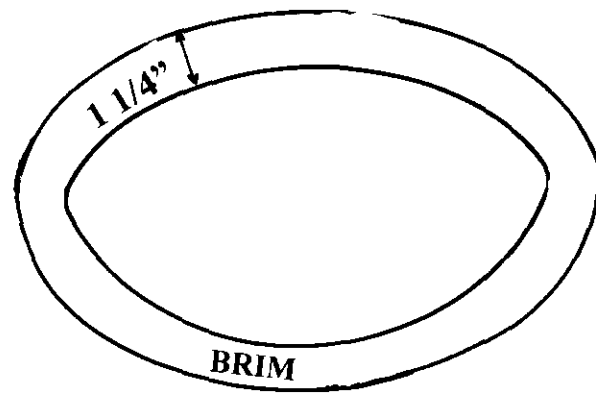


Diagram B

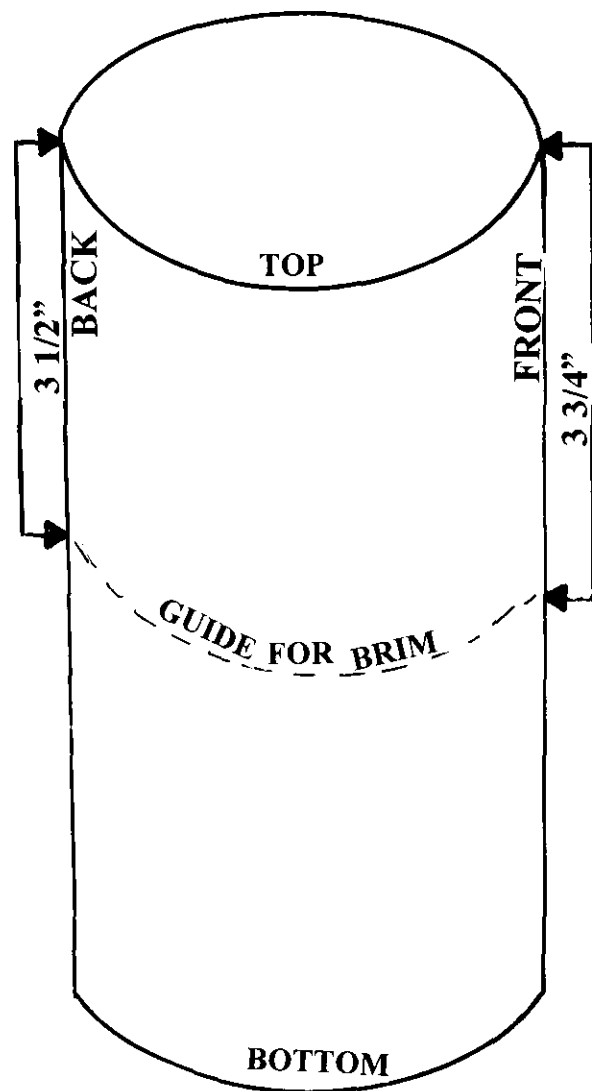


Diagram C

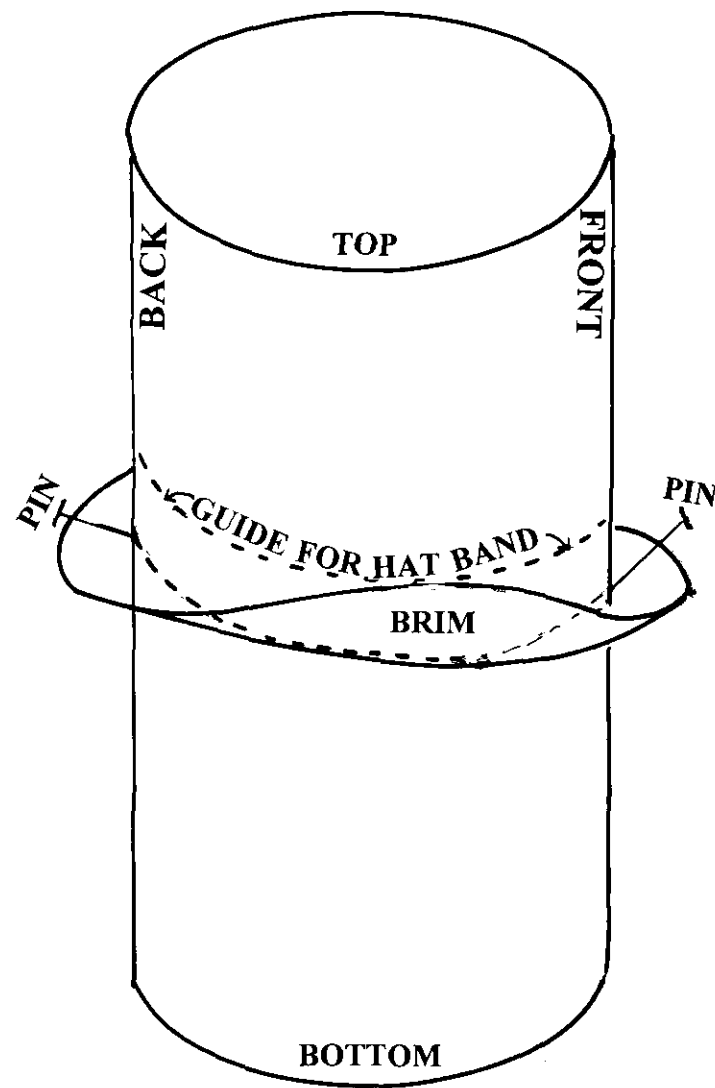


Diagram D

