

TERRIBLE TWO'S BODY (Approx 28")
Copyright 1997 REVISED

(Fits 28" Terrible Two's Breast/Pl., Arms,
Bent Legs and Straight Legs)

FABRICS & NOTIONS

3/4 yd. Muslin
1 1/2 Cups Pellets - sitting body
Polyfil - Stuffing
24" Cotton Twill Tape 1/2" Wide - shoulder plate ties
10 and 12 Gauge Romex Wire - or 1/2" armature for legs and torso - Standing body
Floral Wire - binding porcelain arms, legs
40mm Shoulder Plate Connector - mounting head to breast/pl.
Unwaxed Dental Floss - gathering stitches forming buttocks

READ ALL INSTRUCTIONS BEFORE CUTTING FABRICS

NOTE: 1. WRST, indicates With Right Sides Together.

2. All seams are 1/4" unless otherwise stated.

3. For maximum mobility, stuff cloth arms SOFTLY.

4. Stuff cloth legs SOFTLY when using bent porcelain legs.

5. When using straight porcelain legs, stuff cloth legs FIRMLY

**6. When cleaning greenware, make the ARM & LEG GROOVES DEEPER. SEE
DIAGRAM.**

BODY CONSTRUCTION:

1. WRST, sew the lower backs together at the center back seam to dot. Sew the upper fronts at the center front seam to dot.

2. Sew two rows of gathering stitches across the seat between the notches. Pull up the gathering threads to fit the upper back, pin and sew the seat to the upper back.

3. WRST, sew the front to the back at the side seams. Sew the four twill tape ties in place for breast plate. **SEE PATTERN FOR PLACEMENT.**

4. Sew the crotch/inseam.

5. WRST, sew the cloth arm tubes.

6. Leave body turned wrong side out.

7. Since the legs are so "hefty" it would be wise to put shoes on the feet or wrap each foot with bubble wrap to avoid breakage.

8. Place a porcelain leg inside the cloth leg and bind together at the leg groove with a length of floral wire. Twist the wire three or four times to tighten as much as possible.

9. After each leg is mounted to the body, carefully turn the body right side out.

10. Place an 18" length of 10 gauge wire or 1/2" armature into each leg. Pack polyfil around the wire in each porcelain leg leaving the top 1/4" open. Fill the 1/4" area with hot glue. Let cool. Prepare both legs.

11. Then very loosely place polyfil in the cloth legs and into the seat.

12. Sew Pellet Sack "E" together leaving an opening for inserting pellets. Pour about 1 1/2 cups of pellets in the pellet sack. Close sack with a machine stitch. Place pellet sack in seat of sitting body, then continue stuffing torso with polyfil.

13. Bring the two wires or armature together in the chest area and bind them together with floral wire or strapping tape. Hand stitch upper back together. Continue stuffing the torso until full.

14. Whip stitch the top of torso closed.

PATTERN NUMBER DA 1358

**THE
DOLL INC
ARTWORKS**
RT. 9 BOX 119
HWY 274
SEVEN POINTS, TX. 75143
TEL. 903-432-9426
FAX. 903-432-9502
ORDERS ONLY
800-886-3655

15. With a dental floss double threaded needle, sew 2 rows of gathering stitches from the notch down one side of the center back seam and on the seat to the crotch seam. Pull up gathering threads to measure about 2". Tie off in a double knot. Clip thread tails.

16. The doll is stuffed properly and is well balanced when the feet are flat on the floor. The torso sits upright and does not lean backwards. The cloth legs and the bend of the cloth legs at the torso **MUST BE STUFFED VERY LOOSELY** to achieve this balance. The legs can then be posed easily.

17. Set eyes in head and let dry. Then connect the head to the breast plate with a 40mm connector or method of your choice.

18. Place 16" of 12 gauge Romex wire into porcelain arm and stuff firmly with polyfil keeping the wire in the middle. Fill the top 1/4" of the arm with hot glue. Let cool. Prepare both arms.

19. Tie cloth arms to porcelain then turn cloth arm right side out. Stuff the cloth arm loosely. Measure from the tip of the middle finger to the 14" mark on the wire.

20. Place right arm armature into the right side of the breast plate. Place the left arm on the left side. Bend the two wires at 14" mark and tape together inside breast plate. Fold back excess wire and center taped area. Position the breast plate down on the torso.

21. Tie the breast plate to the torso with the twill tape ties.

22. For the sitting body put a soft sculpture stitches in each leg **See pattern for placement**

This pattern contains 6 pieces. They are as follows:

A - - BODY FRONT

A - - BODY FRONT EXTENSION

B - - UPPER BODY BACK

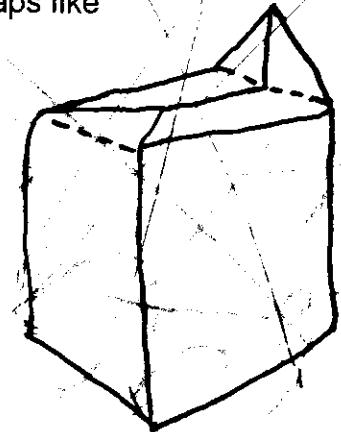
C - - SEAT

D - - ARM

E - - PELLET SACK for Sitting Body

CLOSING TORSO ENVELOPE STYLE

Fold over front & back.
Sew shut at sides.
Fold down flaps like an envelope.



**MAKING ARM & LEG GROOVES DEEPER
IN THE GREENWARE**



While cleaning the greenware deepen the grooves of the arms and legs by using a sawing motion with a large screw.

**ADDITION TO TERRIBLE TWO'S BODY
LEGS FOR DUTCH BOY & GIRL
Copyright 1997**

FABRICS & NOTIONS

Use 1 yd. of muslin
10 Gauge Romex Wire (37" for 1 doll)
1/2" PVC Pipe
1/2" PVC 45° Slip Connector
Plastic Pipe Cement
Rod Doll Stand
1 Pair Men's Acrylic Dress Socks - black
Super Glue - jell type

SPECIAL INSTRUCTIONS:

- A. When cleaning greenware make a hole in the sole of each shoe. **SEE DIAGRAM**
- B. Deepen the groove where the foot and top of the shoe meet. **SEE DIAGRAM**
- C. Cut the ribbed top off both socks.
- D. Cut 1/2" PVC Pipe into the following lengths:
11 1/2" --- Cut 2
2" --- Cut 2
- E. Cut 10 Gauge Romex Wire into the following lengths:
20" --- Cut 1
17" --- Cut 2
- F. Cement a 2" pipe length into a 45° Slip Connector - - prepare two connectors.

BODY CONSTRUCTION:

23. Same as Step 1 on Page 1.
24. Same as Step 2.
25. Same as Step 3.
26. Same as Step 4.
27. Fold pleat on solid line on each arm tube. Bring the "A" Dots down to match "B" Dots. Press pleat in place. WRST, sew arm tube seam.
28. Same as Step 6 and 7.
29. Place a bead of Super Glue in the groove at the shoe top. Slightly turn under the cut end of the sock tops. With a blunt needle or paper clip, push the turned under edge down into the groove. Then follow Step 8 and 9.
30. Hot glue 11 1/2" length of 1/2" PVC pipe into each shoe. Center the pipe over the hole in bottom of shoes. Stuff around PVC with polyfil up to the leg groove. Finish filling the porcelain leg with hot glue, keeping the PVC centered.
31. Then cement the connector to the top of the 11 1/2" leg pipe. Prepare both legs. **SEE DIAGRAM FOR POSITION.**
32. With body turned wrong side out, pull cloth legs down over the porcelain leg groove and sock. Straighten the sock then bind sock and cloth leg to the porcelain leg at the groove with floral wire. Trim some of excess sock top away if needed.
33. Turn body right side out. Pack polyfil around the leg PVC, filling the cloth legs to the hips.
33. Place one end of 20" Romex wire into the left leg and the other end in the right leg. The wire will go into each

leg pipe end about 3" then form an inverted "U" above the legs.

34. Continue stuffing polyfil firmly in the seat. The Romex wire will curve forward into the stomach area then curve the top part of the wire back up into the chest. **SEE DIAGRAM**

35. Hand stitch upper back together. Continue stuffing torso firmly until full.

36. Same as Step 14 and 15.

37. Same as Step 17.

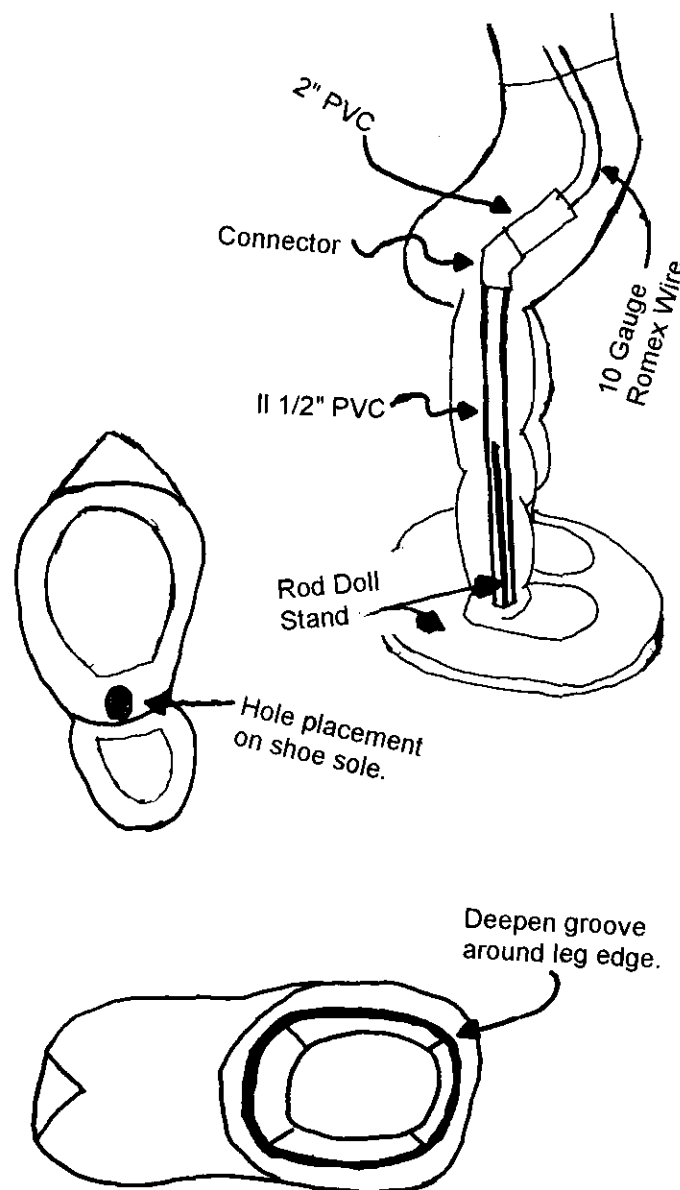
38. Same as Step 18 using 10 gauge wire.

39. Same as Step 19.

40. Same as Step 20.

41. Same as Step 21.

These three new pattern pieces will replace the REVISED Pattern Piece "A" BODY FRONT EXTENSION, REVISED Pattern Piece "C" SEAT, and REVISED Pattern Piece "D" ARM.



**GENERAL PAINTING TECHNIQUE
AS DONE BY DONNA RUBERT**

FYI:

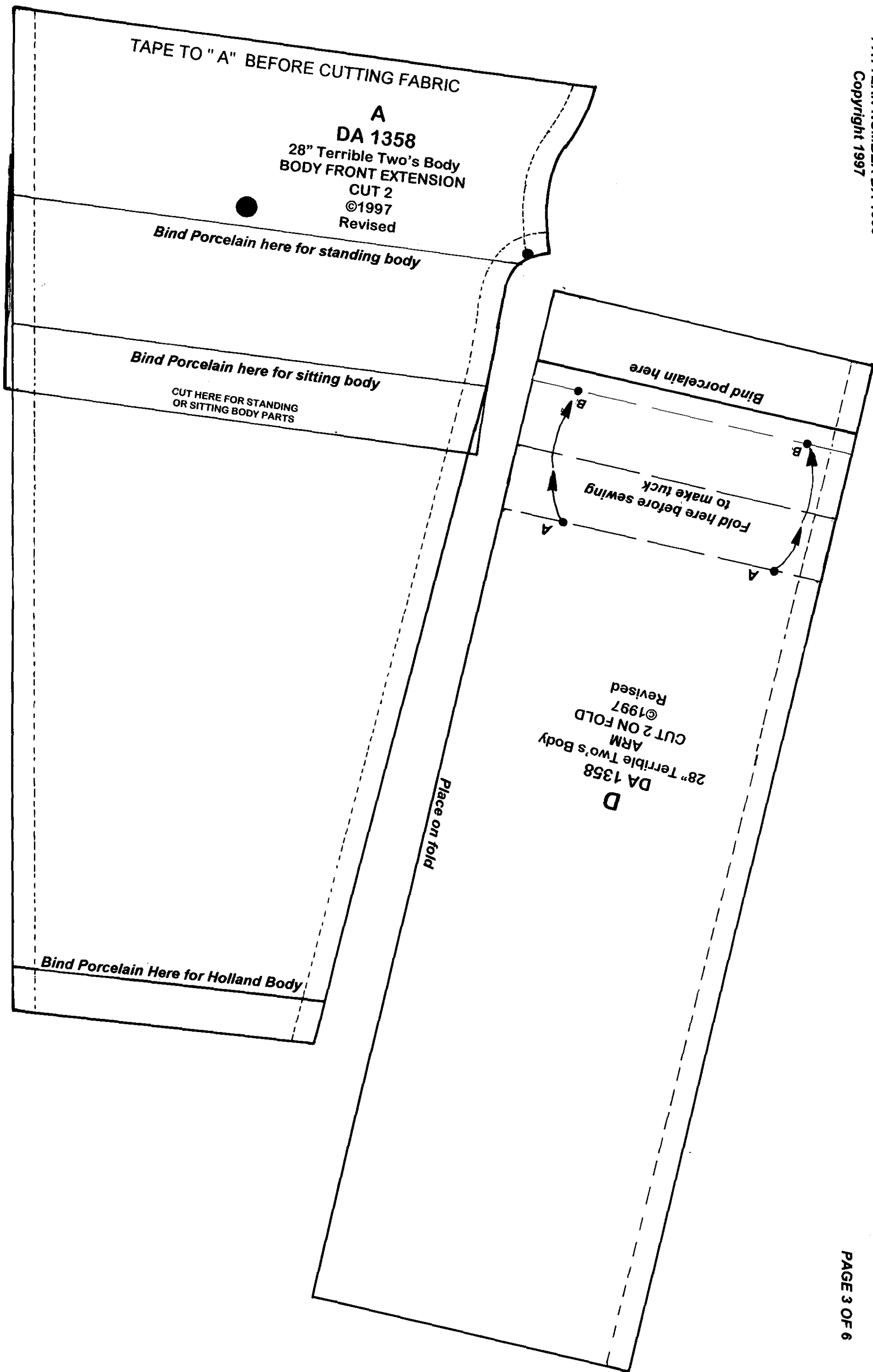
After the initial mixing of Watersilks #2 with the dry paint, I only use water to thin my paint. The only other time I use Watersilks #2 is after washing my brush. I dip my clean brush into Watersilks #2, then blot. This is more to get the water out of my brush than it is to add medium. When mixing two colors of paint, I always mix each color separately then pull a small amount of one color into the other color; then mix completely.

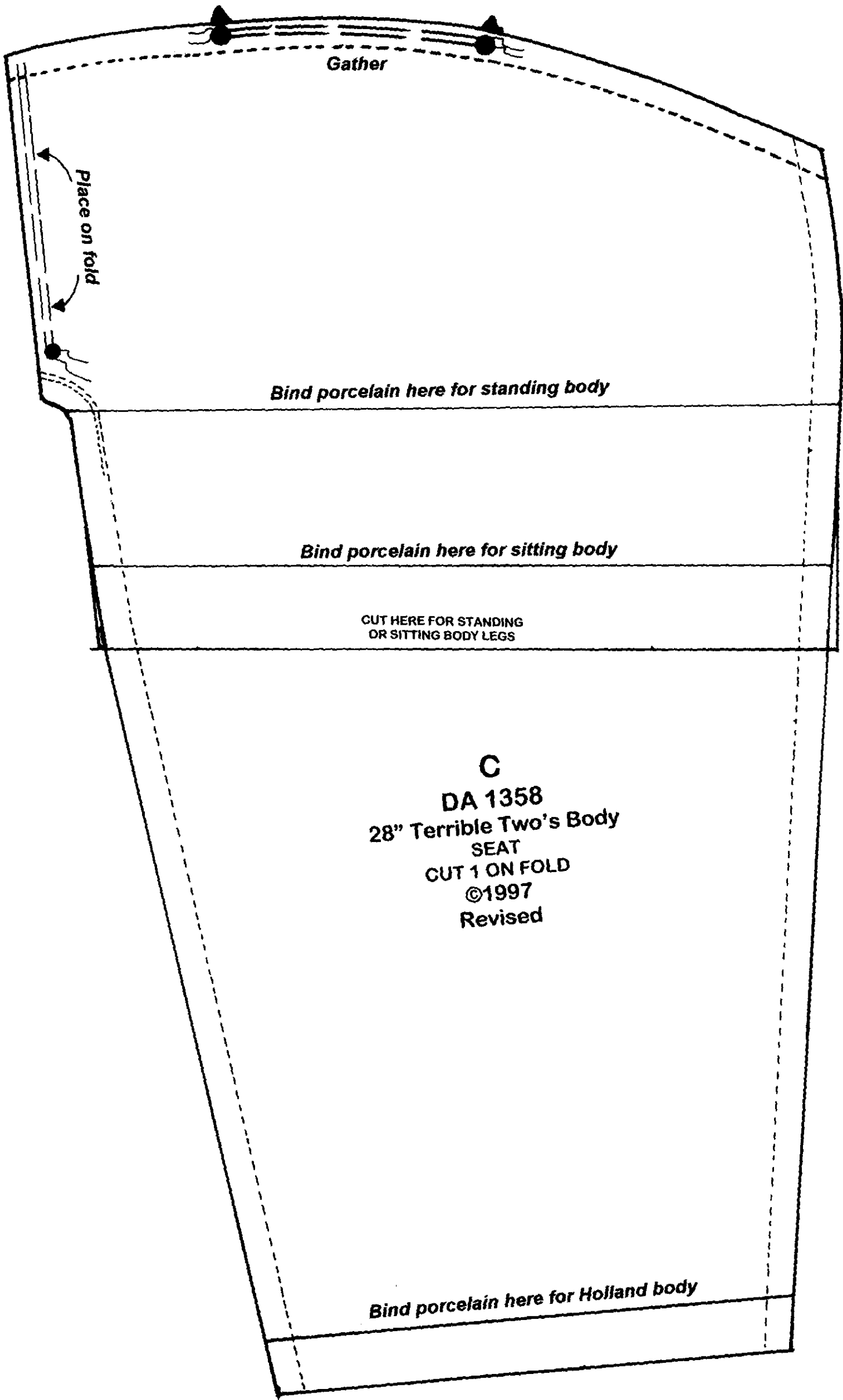
Unless otherwise stated, mix paints to the consistency of toothpaste.

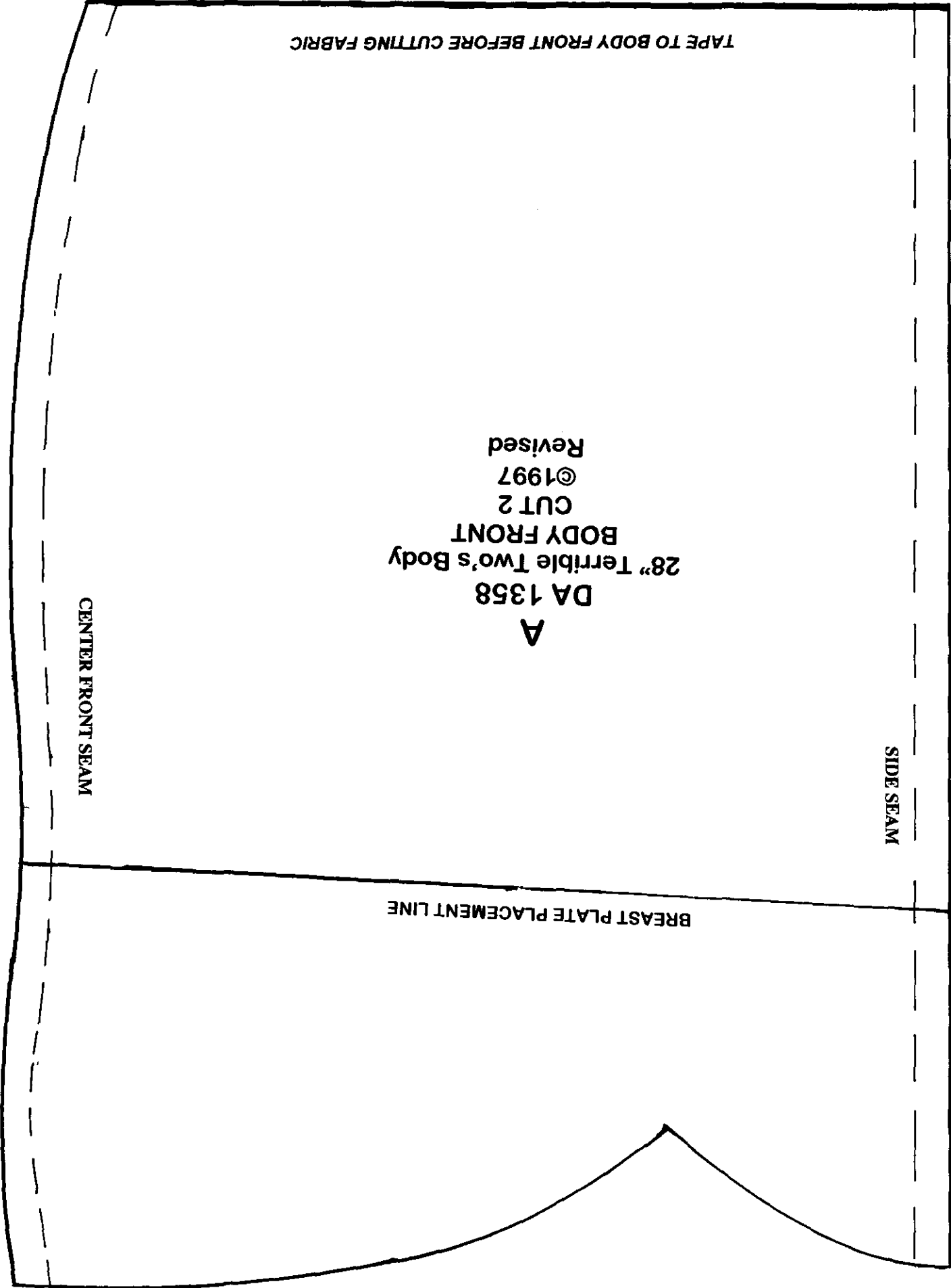
When I refer to antiquing a piece, that means putting color in the creases or low points of the piece (i.e.: behind the knees, in the bend of the arm, between the fingers and toes, etc.). On a head, antiquing would be done under the chin, behind the ears, in the ears, around the nose, in the space between the nose and the upper lip, and in each nostril, etc.. When I blush, I put paint on the high points on the piece (i.e. the knees, the back of the hands, the elbows, the knuckles, etc.) On the head I blush the cheeks, chin, forehead, and hairline, etc..

Clean greenware as usual, beveling the eyes to the proper size. FIRE TO A TRUE CONE 6.

1. Coat head, s/p, arms, legs, and with Watersilks #2. Wipe back with T-shirt material until there is a soft sheen.
2. Mix the antiquing color with Watersilks #2. Paint the fingernails and toenails with the antique color then blot so just a hint of color is on the nail bed. Apply and smooth out the antique color in the creases of the s/p, arms, and legs. Use a china mop to even out the color. -Reminder- antiquing is always done in the low points of a piece.
3. Mix the eyelid color with Watersilks #2. Apply the eyelid color and even out using a cosmetic Q-tip. Apply the lip crease color in the crease of the mouth. With a square shader, pull the color out just a little and make several lip lines on the lips. This color is not done heavy. Apply the antiquing to the head. Use china mop to even out color. FIRE HEAD, S/P, ARMS, LEGS, TO A TRUE CONE 018.
4. Coat entire head with Watersilks #2. Wipe back with T-shirt material until there is a soft sheen.
5. Mix eyelash color with Watersilks #1. Apply lower lashes that are short, straight, and close together. They should not be heavy.
6. Mix eyebrow color with Watersilks #1. Brush in single hairs of brows. The eyebrows should look natural, avoid long and heavy strokes. Children's brows should not be perfect.
7. Mix the lip color with Watersilks #2. Paint the lips making sure you go to and follow the lip line. Soften the outer lip with a Q-tip. Be sure there is no harsh line of paint left on the lip line. FIRE TO A TRUE CONE 018.
8. Coat head, s/p, arms, and legs with Watersilks #2. Wipe back with T-shirt material to a soft sheen.
9. Mix nail color with Watersilks #2. Paint a nail tip and a "half moon" (half moon is at the base of each nail) on each finger and toenail. This should be done very light. You want just a hint of color to look natural.
10. Mix blush color with Watersilks #2. Using your forefinger, apply the blush color to cheeks, chin, temple, forehead, hairline, knuckles, knees, toes, etc. Even out the color with a china mop. -Reminder- When blushing, always put paint on the high points. When you are satisfied with the color intensity FIRE TO A TRUE CONE 018.
11. Coat head with Watersilks #2. Wipe back with T-shirt material.
12. With the eyebrow color, take a Q-tip and scrub the color on top of the fired on brows. Use a clean Q-tip and soften the color until it appears like a light shadow under the brow hairs. With the eyelash color, shade over the lower lashes the same way; softening out the color at the lower edge away from the eye opening. If there is a second color on the eyelid, now is the time to apply it. Be sure to stay away from the eyebrow color you just applied.
13. Mix the lip accent color with Watersilks #2. Accent the fullest part of the center of the lower lip. Accent the fullest part of the upper lip (the milk lip). Doing this makes a "hot spot" of color on the lips.
14. Mix the cheek accent color with Watersilks #2. Blush the top half of the already blushed cheek area with the cheek accent color. Applying this color makes a "hot spot" of color on the cheeks. FIRE TO A TRUE CONE 018.
15. With the eyebrow/eyelash color, paint accent hairs on the brows and the lower lashes. Accent hairs are extra hairs to fill in or put on "top" of shading done in Step 12.
16. If the head has teeth (and you are painting them with china paint), mix teeth color with Watersilks #2 and paint the teeth. Be sure you don't get any of this color on the lips.
17. Check the color intensity on all of your pieces. If you need more color anywhere now is the time to intensify your colors. If you are completely satisfied with your work, FIRE TO A TRUE CONE 018.
18. The final step is to apply a no-fire sealer on the lips and teeth. The sealer should be thinned with water to cut the gloss somewhat. Note: This sealer can be removed with alcohol when it is completely dry.







PATTERN NUMBER DA 1358
Copyright 1997

