

28" HANNAH ROSE

© 1996

(Fits Bailey sh./pl., Hannah Rose arms,
28" bent legs)

PATTERN NUMBER DA 1338

BODY PATTERN DA 1130

FABRIC AND NOTIONS

- 5/8 yd. Denim 45" wide (jumper)
- 5/8 yd Blue Chambray (blouse)
- 5/8 yd. Plaid
- 1/2 yd Swimsuit Knit (bike pants)
- 1/2 yd. Stretch Lace 1" wide (bike pants)
- 1/2 yd Elastic 1/8" wide
- 3 Snaps (blouse)
- 2 Sets Overall Buckles Size 1 1/8" (jumper)
- 2 Sets Jumbo Decorative Snap Fasteners Size 9/16" (14 mm)

**THE
DOLLING
ARTWORKS**
RT. 9 BOX 119
HWY 274
SEVEN POINTS, TX. 75143
TEL. 903-432-9426
FAX. 903-432-9502
ORDERS ONLY
800-886-3655

READ ALL INSTRUCTIONS BEFORE CUTTING FABRIC AND NOTIONS.

NOTES:

1. WRST indicates with right sides together.
2. All seams are 1/4" unless otherwise indicated.
3. Finish all seams with a serge or zigzag stitch.
4. Because we all stuff differently, please try costume on your doll during construction for proper fit.

BLOUSE

1. WRST, sew blouse fronts and back together at the shoulder seams. Also, sew front blouse facings and back neck facing together at the shoulder seams.
2. WRST, sew the collar together around the outer seam only. (you may add piping trim around the collar edge when sewing the collar together if you choose). Turn the collar right side out and press. **DO NOT STRETCH THE NECK.**
3. Open blouse out flat with the right side facing up. Position collar on blouse, pin in place. Then position blouse facings on top of the collar (wrong side up), pin and sew.
4. Clip neck seam every 1/8". Turn facing to the inside and press. The facing raw edge should be finished with a turned under 1/8" seam, serge or zigzag stitch. Be sure to try blouse on doll at this point to check neck, if too small sew another seam in neck line clip seam and retry on doll.
5. Sew two rows of gathering stitches across the top of the sleeve cap. Pull up stitches to fit the armholes. Matching notches, pin and sew each sleeve in place.
6. WRST, sew sleeve seam and blouse side seams with one long row of stitching. Turn right side out.
7. WRST, sew sleeve cuff facings together. Slide this cuff facing onto the sleeve, WRST, sew a 1/4" seam at the end of each sleeve. Turn cuff facing to the inside. (See View 1)
8. Turn the blouse and sleeves wrong side out.
9. Turn the sleeve facing under 1/4" and pin in place. Whip stitch this edge to the sleeve.
10. Turn blouse right side out. Turn up end of sleeve and facing about 1 1/2" making a cuff.
11. Hem the blouse bottom edge with a shirttail hem.
12. Sew snaps or buttons and buttonholes on the blouse front, see pattern for placement.

View 1



JUMPER

1. Press 1/4" seams under all around the patch pocket. Top stitch two rows of stitching across the pocket top.
2. Iron the mouse appliqué or decoration of your choice on the center of the pocket.
3. Position pocket on the jumper bib front, pin and sew two rows of top stitching around pocket. (See view 2)
4. WRST, position lining on the front bib, sew side seams and top seam only. Turn right side out and press.

5. **WRST**, sew shoulder straps and strap linings together. Turn straps right side out and press. Again apply two rows of top stitching around each strap.
6. **WRST**, position shoulder straps on back bib. Place bib lining on top of the shoulder straps-wrong side facing up. (The shoulder straps are sandwiched between the bib and bib lining). Pin and sew around sides and top of the bib. Turn right side out and press.
7. **WRST**, sew the skirt front and back together at the side seams, as indicated on the pattern, fold placket facings under on fold line. Finish raw edges of placket with a zigzag stitch or serge stitch.
8. Sew two rows of gathering stitches across the top of the skirt front and back. Pull up gathering stitches to fit bottom edge of the front bib, pin and sew. Follow same procedure for the back bib and skirt.
9. Turn under bottom edge of the bib front lining. Whip stitch lining to the skirt and bib seam. Follow the same procedure for the back bib and skirt.
10. Sew two rows of top stitching around the bib front and bib back.
11. **WRST**, sew front and back skirt hem facings together at the side seams.
12. **WRST**, pin skirt hem facing to the skirt bottom. Sew facing and skirt together with a 1/4" seam. Turn facing to the inside. Press. Turn the top edge of the facing under 1/4", pin and whip stitch hem in place.
13. Apply a snap to each skirt side placket. See pattern for location. Buttons and buttonholes may be substituted.
14. Apply "overall fasteners" to each strap and the bib top. See pattern for placement. Buttons and buttonholes may be substituted.
15. **WRST**, fold bow knot on the fold line. Stitch 1/4" seam forming a tube. Turn tube right side out.
16. **BOW**: Open bow out flat and sew a narrow hem on each side of the bow. **WRST**, sew the ends of the bow together (1/4" seam). Turn right side out. Fold bow across the middle fold line and sew a row of loose gathering stitches down the center. Pull up the gathering stitch and wrap the bow knot tube around the bow. With needle and thread, whip stitch the bow knot ends down. Then place bow on the bib back and sew to bib.

BIKE PANTS

1. Zigzag stretch lace to the edge of each pants leg.
2. **WRST**, sew the center front seam together and the center back seam.
3. **WRST**, stitch the crotch seam.
4. Turn under waist casing and sew. Run elastic into casing. Hand stitch elastic ends together, then close casing.

NOW DIRTY HER UP AND MESS UP HER CLOTHES TO LOOK AS IF SHE'S BEEN IN A FIGHT WITH THE BOYS.

PATTERN PIECES

A & B BIKE PANTS AND BIKE PANTS LOWER EXTENSION-TAPE TOGETHER FOR ONE PATTERN PIECE

C SLEEVE

D BLOUSE BACK

E SHOULDER STRAPS

F JUMPER SKIRT FRONT AND BACK

G JUMPER SKIRT FACING

H COLLAR

I JUMPER FRONT BIB

J BLOUSE NECK FACING

K JUMPER BACK BIB

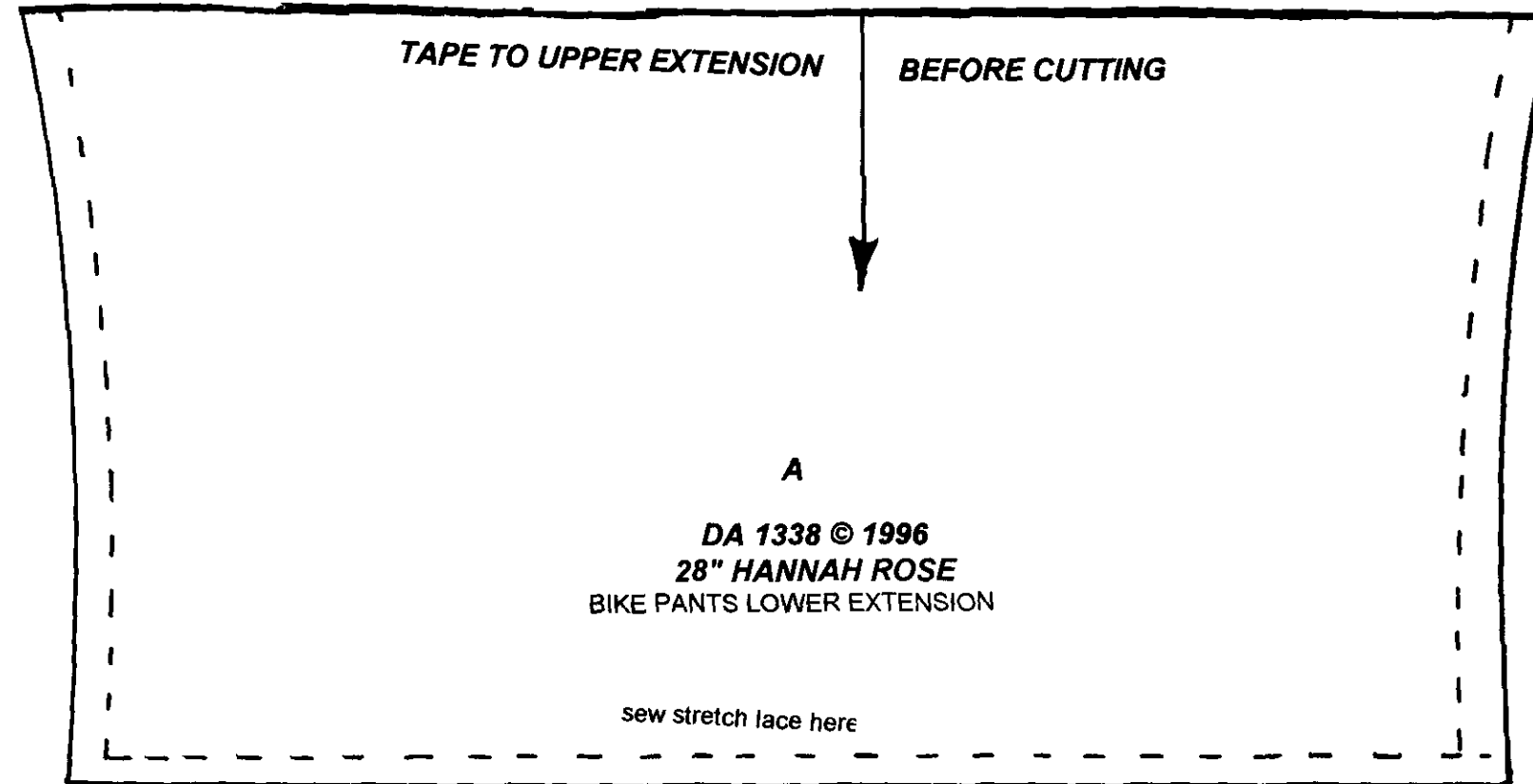
L BLOUSE FRONT

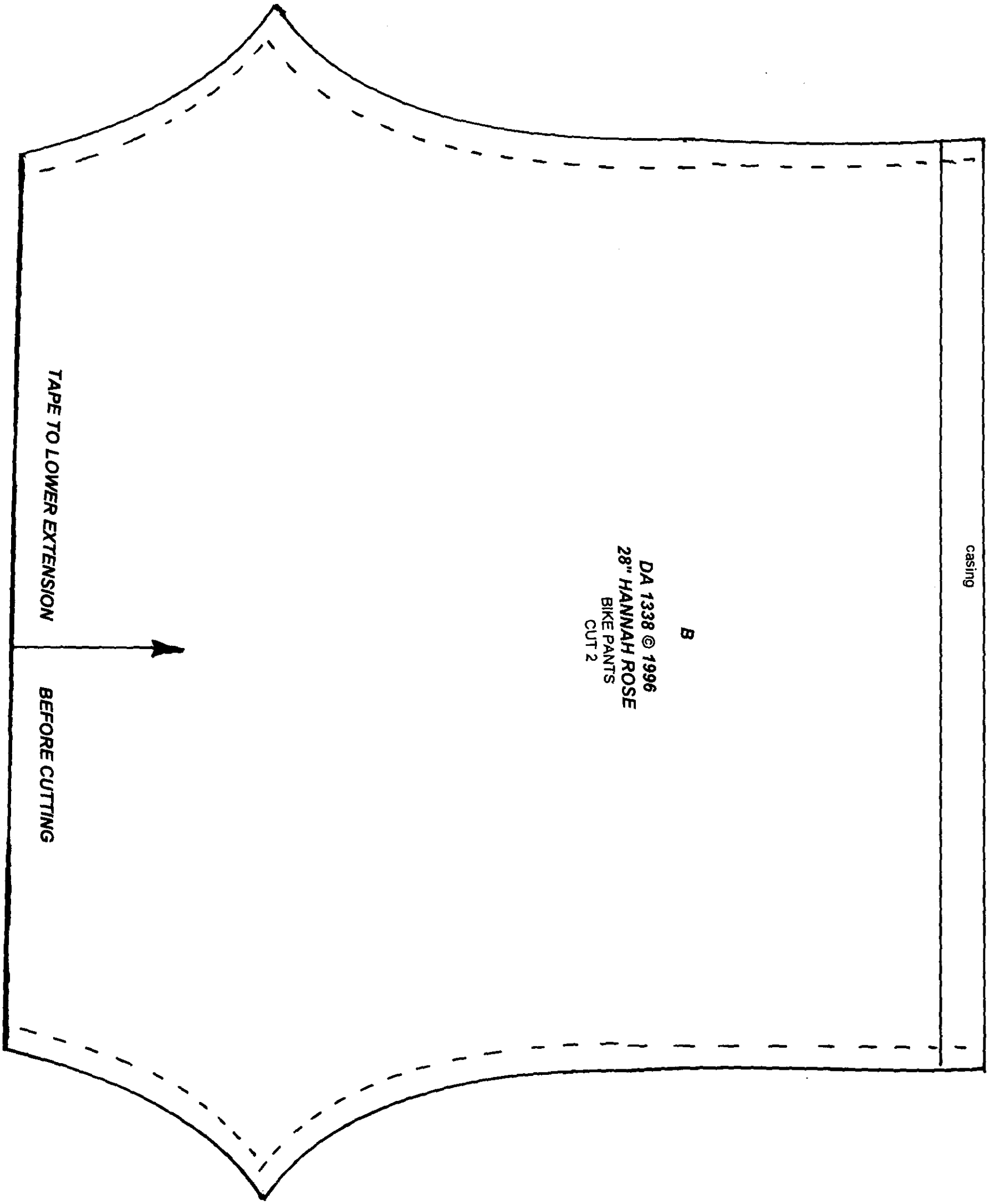
M. SLEEVE CUFF FACING

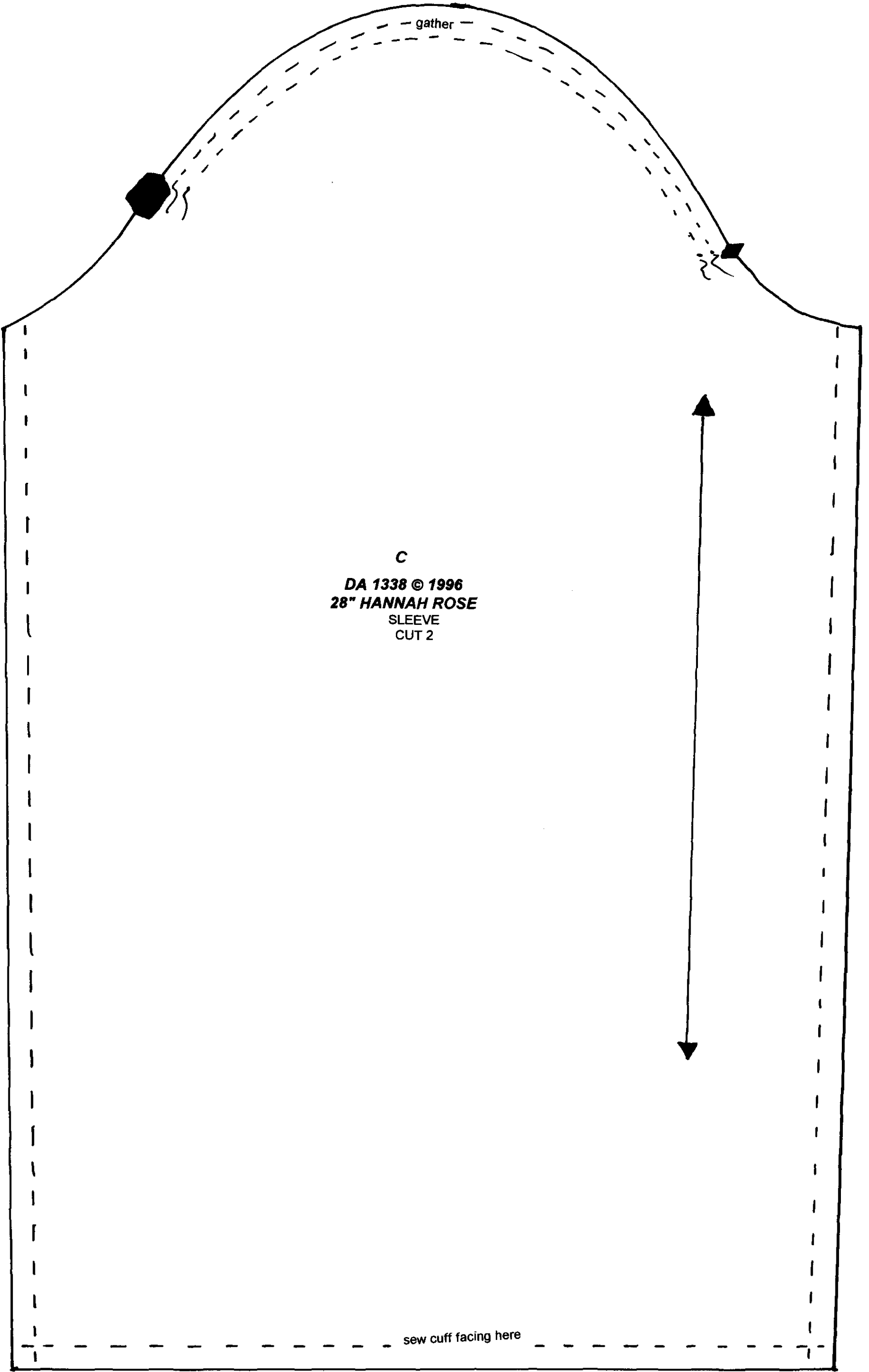
N JUMPER POCKET

O BOW

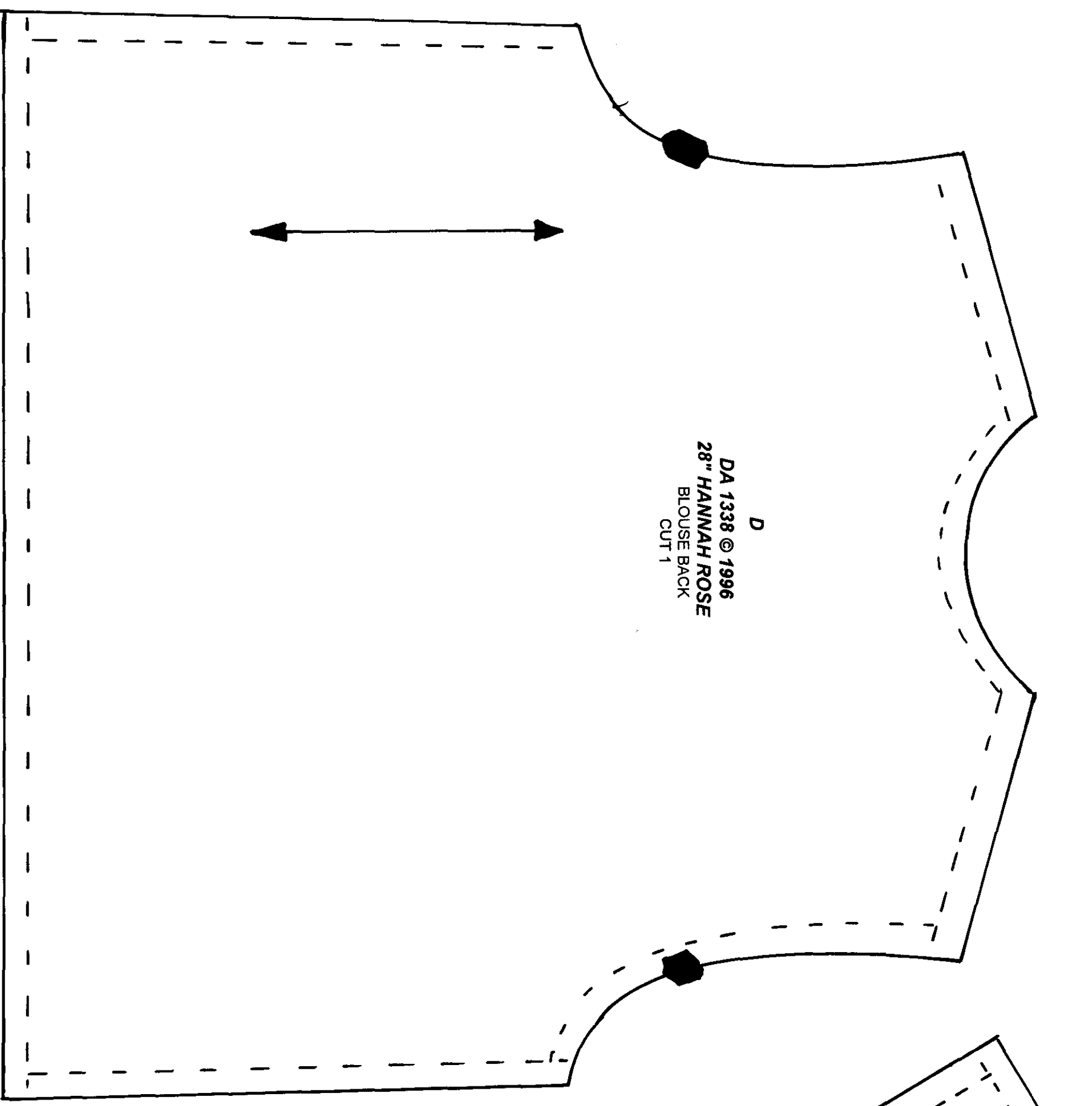
P BOW KNOT



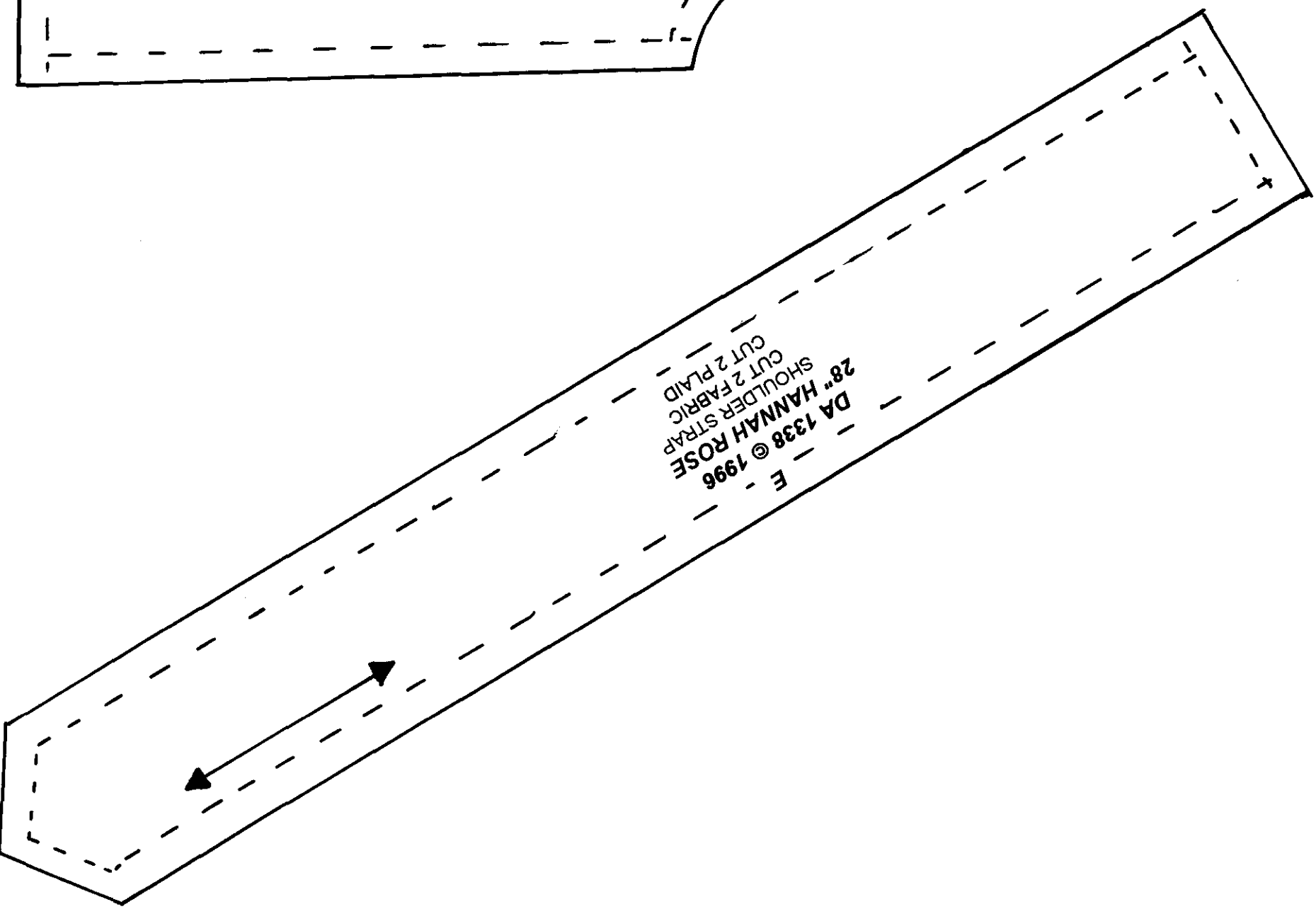


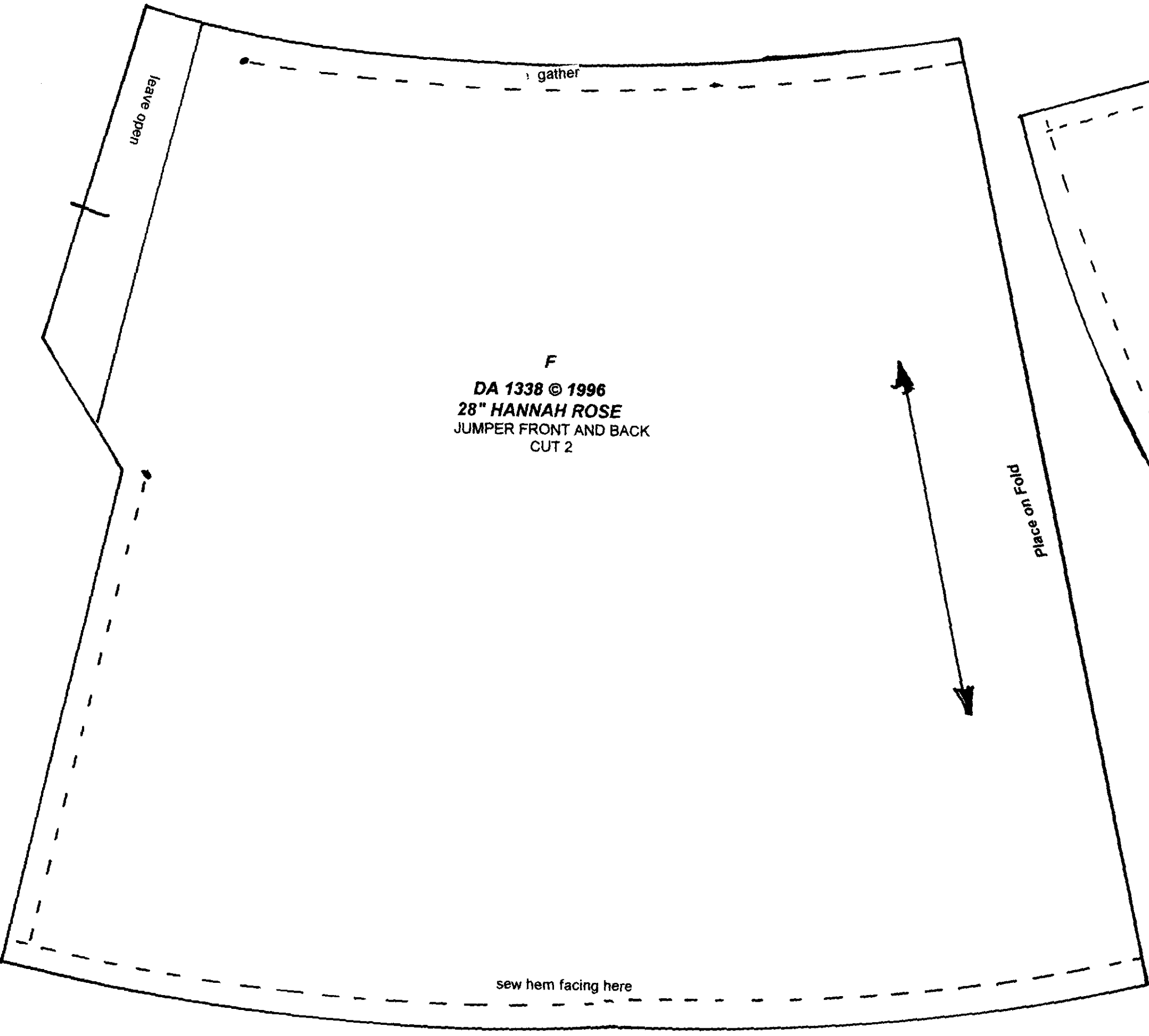


D
DA 1338 © 1996
28" HANNAH ROSE
BLOUSE BACK
CUT 1

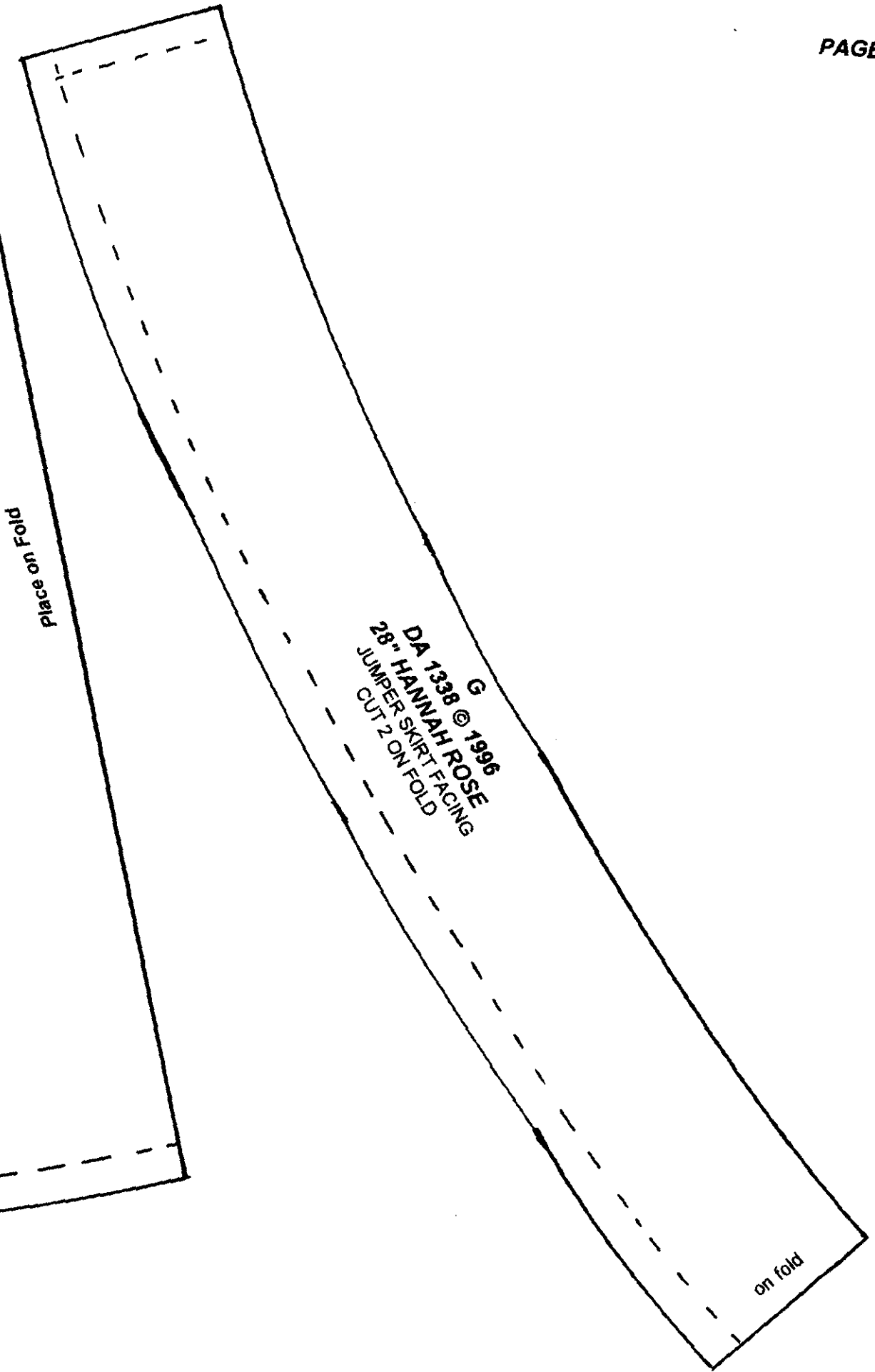


E
DA 1338 © 1996
28" HANNAH ROSE
SHOULDER STRAP
CUT 2 FABRIC
CUT 2 PLAID





F
DA 1338 © 1996
28" HANNAH ROSE
JUMPER FRONT AND BACK
CUT 2

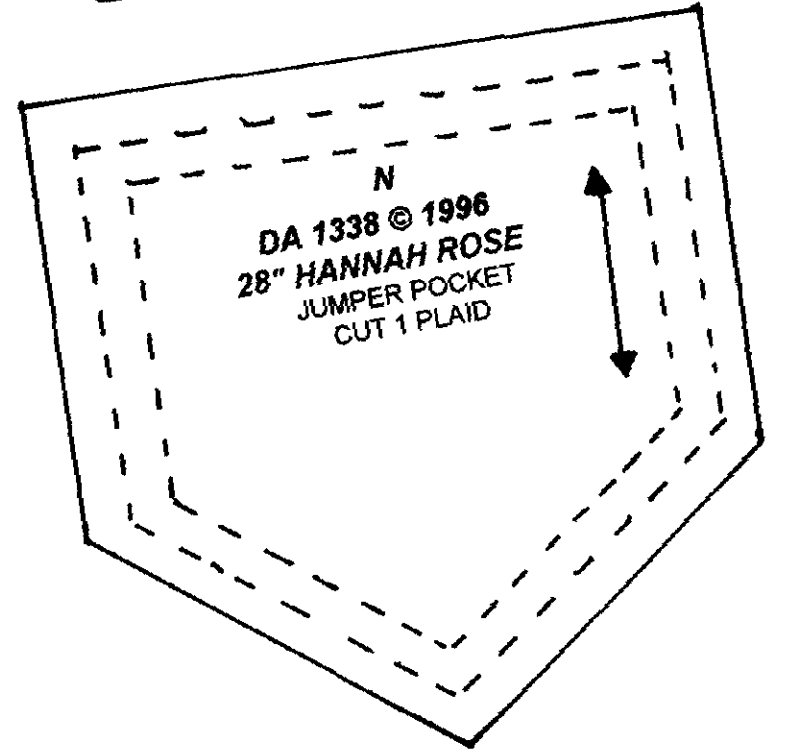
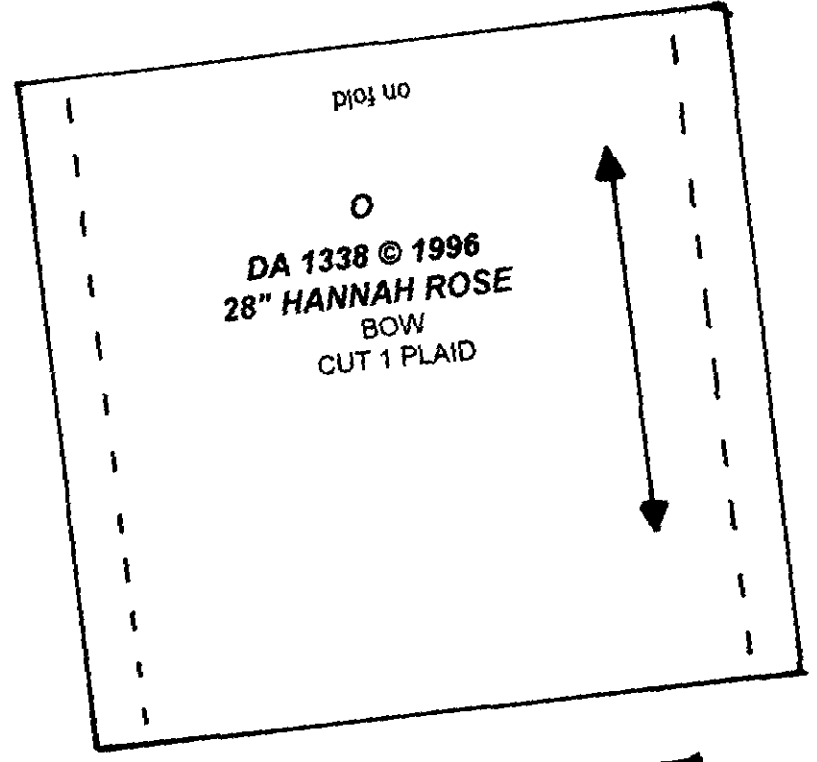
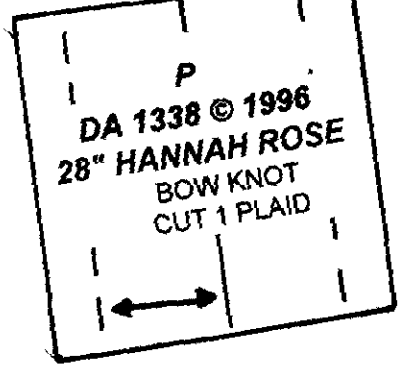
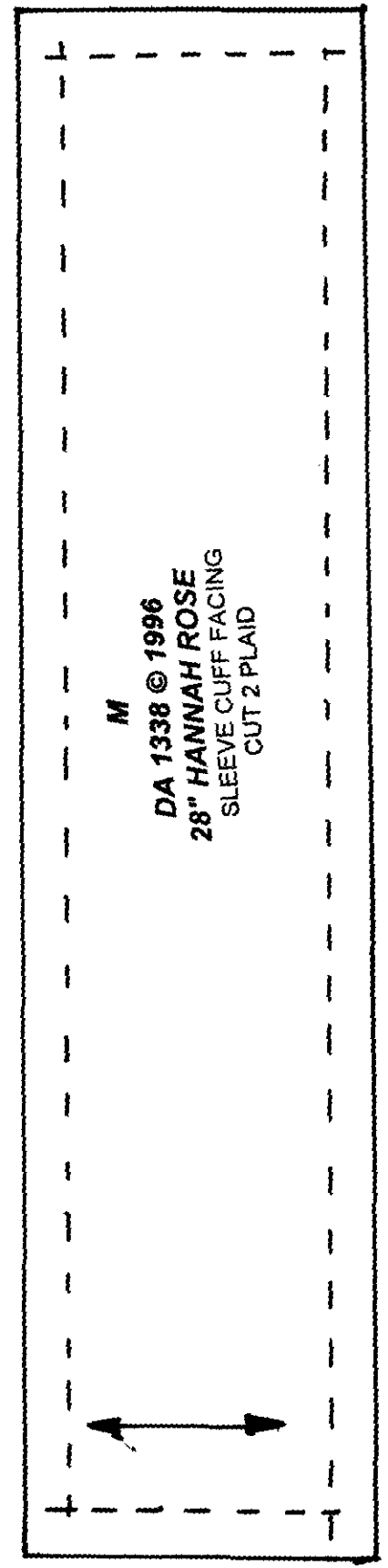
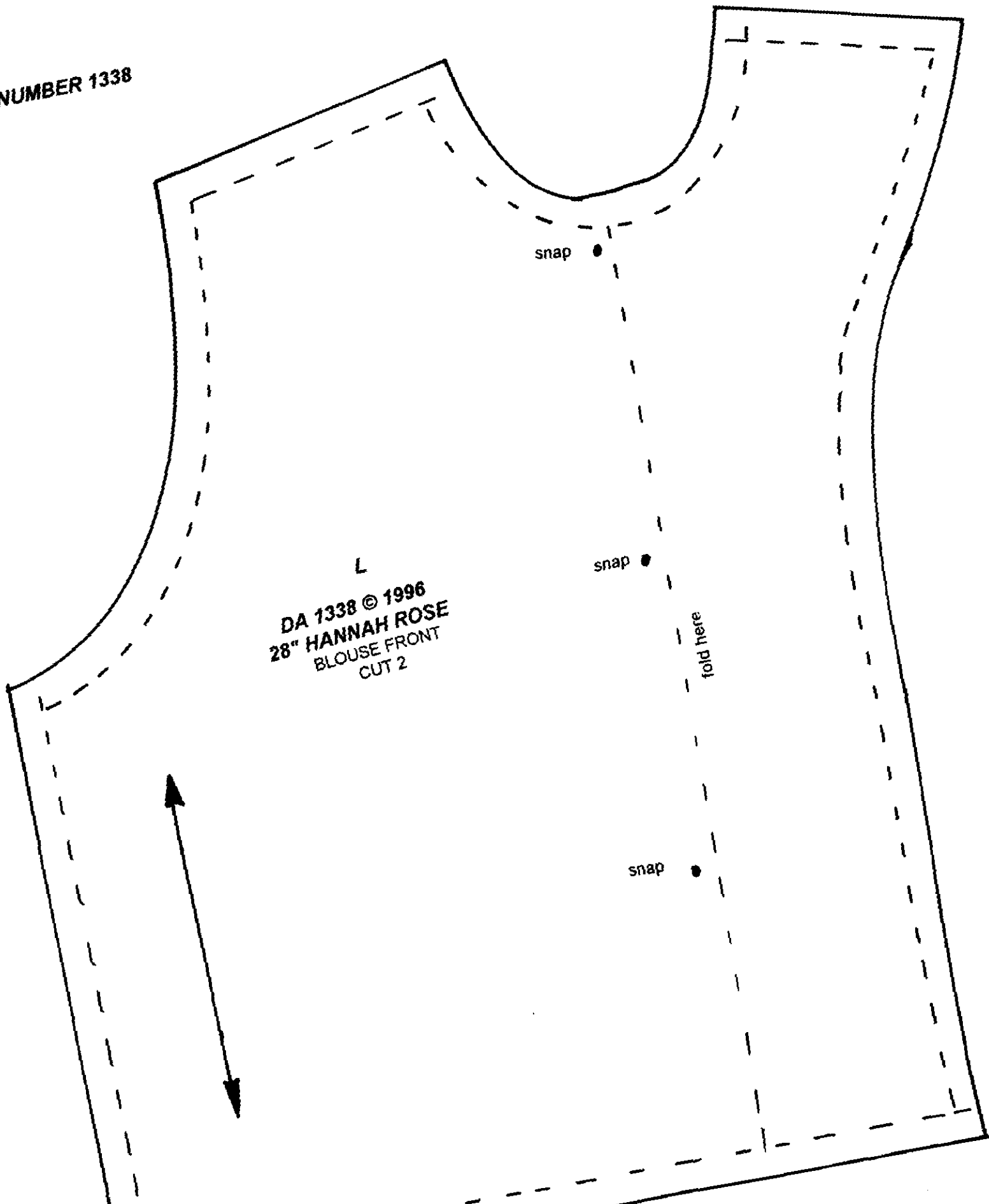


G
DA 1338 © 1996
28" HANNAH ROSE
JUMPER SKIRT FACING
CUT 2 ON FOLD

Place on Fold

on fold

PATTERN NUMBER 1338



GENERAL PAINTING TECHNIQUE AS DONE BY DONNA RUBERT

FYI:

After the initial mixing of Watersilks #2 with the dry paint, I only use water to thin my paint. The only other time I use Watersilks #2 is after washing my brush. I dip my clean brush into Watersilks #2, then blot. This is more to get the water out of my brush than it is to add medium. When mixing two colors of paint, I always mix each color separately then pull a small amount of one color into the other color; then mix completely.

Unless otherwise stated, mix paints to the consistency of toothpaste.

When I refer to antiquing a piece, that means putting color in the creases or low points of the piece (i.e.: behind the knees, in the bend of the arm, between the fingers and toes, etc.). On a head, antiquing would be done under the chin, behind the ears, in the ears, around the nose, in the space between the nose and the upper lip, and in each nostril, etc.. When I blush, I put paint on the high points on the piece (i.e. the knees, the back of the hands, the elbows, the knuckles, etc.) On the head I blush the cheeks, chin, forehead, and hairline, etc..

Clean greenware as usual, beveling the eyes to the proper size. FIRE TO A TRUE CONE 6.

1. Coat head, s/p, arms, legs, and with Watersilks #2. Wipe back with T-shirt material until there is a soft sheen.
2. Mix the antiquing color with Watersilks #2. Paint the fingernails and toenails with the antique color then blot so just a hint of color is on the nail bed. Apply and smooth out the antique color in the creases of the s/p, arms, and legs. Use a china mop to even out the color. -Reminder- antiquing is always done in the low points of a piece.
3. Mix the eyelid color with Watersilks #2. Apply the eyelid color and even out using a cosmetic Q-tip. Apply the lip crease color in the crease of the mouth. With a square shader, pull the color out just a little and make several lip lines on the lips. This color is not done heavy. Apply the antiquing to the head. Use china mop to even out color. FIRE HEAD, S/P, ARMS, LEGS, TO A TRUE CONE 018.
4. Coat entire head with Watersilks #2. Wipe back with T-shirt material until there is a soft sheen.
5. Mix eyelash color with Watersilks #1. Apply lower lashes that are short, straight, and close together. They should not be heavy.
6. Mix eyebrow color with Watersilks #1. Brush in single hairs of brows. The eyebrows should look natural, avoid long and heavy strokes. Children's brows should not be perfect.
7. Mix the lip color with Watersilks #2. Paint the lips making sure you go to and follow the lip line. Soften the outer lip with a Q-tip. Be sure there is no harsh line of paint left on the lip line. FIRE TO A TRUE CONE 018.
8. Coat head, s/p, arms, and legs with Watersilks #2. Wipe back with T-shirt material to a soft sheen.
9. Mix nail color with Watersilks #2. Paint a nail tip and a "half moon" (half moon is at the base of each nail) on each finger and toenail. This should be done very light. You want just a hint of color to look natural.
10. Mix blush color with Watersilks #2. Using your forefinger, apply the blush color to cheeks, chin, temple, forehead, hairline, knuckles, knees, toes, etc. Even out the color with a china mop. -Reminder- When blushing, always put paint on the high points. When you are satisfied with the color intensity FIRE TO A TRUE CONE 018.
11. Coat head with Watersilks #2. Wipe back with T-shirt material.
12. With the eyebrow color, take a Q-tip and scrub the color on top of the fired on brows. Use a clean Q-tip and soften the color until it appears like a light shadow under the brow hairs. With the eyelash color, shade over the lower lashes the same way; softening out the color at the lower edge away from the eye opening. If there is a second color on the eyelid, now is the time to apply it. Be sure to stay away from the eyebrow color you just applied.
13. Mix the lip accent color with Watersilks #2. Accent the fullest part of the center of the lower lip. Accent the fullest part of the upper lip (the milk lip). Doing this makes a "hot spot" of color on the lips.
14. Mix the cheek accent color with Watersilks #2. Blush the top half of the already blushed cheek area with the cheek accent color. Applying this color makes a "hot spot" of color on the cheeks. FIRE TO A TRUE CONE 018.
15. With the eyebrow/eyelash color, paint accent hairs on the brows and the lower lashes. Accent hairs are extra hairs to fill in or put on "top" of shading done in Step 12.
16. If the head has teeth (and you are painting them with china paint), mix teeth color with Watersilks #2 and paint the teeth. Be sure you don't get any of this color on the lips.
17. Check the color intensity on all of your pieces. If you need more color anywhere now is the time to intensify your colors. If you are completely satisfied with your work, FIRE TO A TRUE CONE 018.
18. The final step is to apply a no-fire sealer on the lips and teeth. The sealer should be thinned with water to cut the gloss somewhat. Note: This sealer can be removed with alcohol when it is completely dry.