

24" LIZA CLOWN

©1996

(Fits 24" Bailey Sh/Pl., 24" Blythe Arms, and
24" Bent Legs)

**24" LIZA CLOWN PATTERN BY LINDA HORNE
PATTERN NUMBER DA 1335
BODY PATTERN DA 1036**

FABRICS AND NOTIONS

- 1 yd. velvet (jacket and skirt)
- 1/3 yd. lining (jacket)
- buttons
- 1 yd. batiste (blouse and panties)
- 1 yd. of 1 1/2" lace
- 3 yds. of 1/2" Venise trim
- 2 yd of 1/4" ribbon
- 1/3 yd. of knit (socks)

**THE
DOLL INC
ARTWORKS**
RT. 9 BOX 119
HWY 274
SEVEN POINTS, TX. 75143
TEL. 903-432-9426
FAX. 903-432-9502
ORDERS ONLY
800-886-3655

READ ALL INSTRUCTIONS BEFORE CUTTING FABRIC AND NOTIONS

NOTES:

1. WRST, indicates with right sides together.
2. All seams are 1/4" unless otherwise indicated.
3. Finish all seams with a serge or zigzag.
4. Because we all stuff differently, please try costumes on your doll during construction for proper fit.

SOCKS

1. Serge upper edge.
2. Fold in half lengthwise, and sew, curving at toe.
3. Turn under 1/2" at top and sew for casing leaving 1/2" open so you can insert elastic.
4. Cut 2 pieces of 1/4" elastic 6 1/4". Insert elastic into casing and secure ends.
5. Slip stitch opening closed.

SKIRT

1. Sew side seams and center front.
2. Sew up center back leaving 3 1/2" opening at the top.
3. Gather top edge of the skirt to approximately 15".
4. WRST sew skirt to waistband leaving 1/4" on each side.
5. WRST fold short ends of waistband in half and sew .
6. Turn waistband right side out, turn under 1/4" and slip stitch closed.
7. Hem 1 1/2.
8. Try skirt on doll for placement of fastener.

PANTIES

1. Sew center front and center back seams.
2. Sew lace trim to legs gathering slightly as you sew.
3. Turn seam up and stay stitch.
4. Zigzag 1/8" elastic on legs stretching as you sew.
5. Sew inseam from one leg edge to crouch to other leg edge.
6. Turn under 1/2" at waist and sew around leaving 1/2" space at back to insert elastic.
7. Insert 10" of 1/4" elastic, secure ends, slip stitch opening closed.

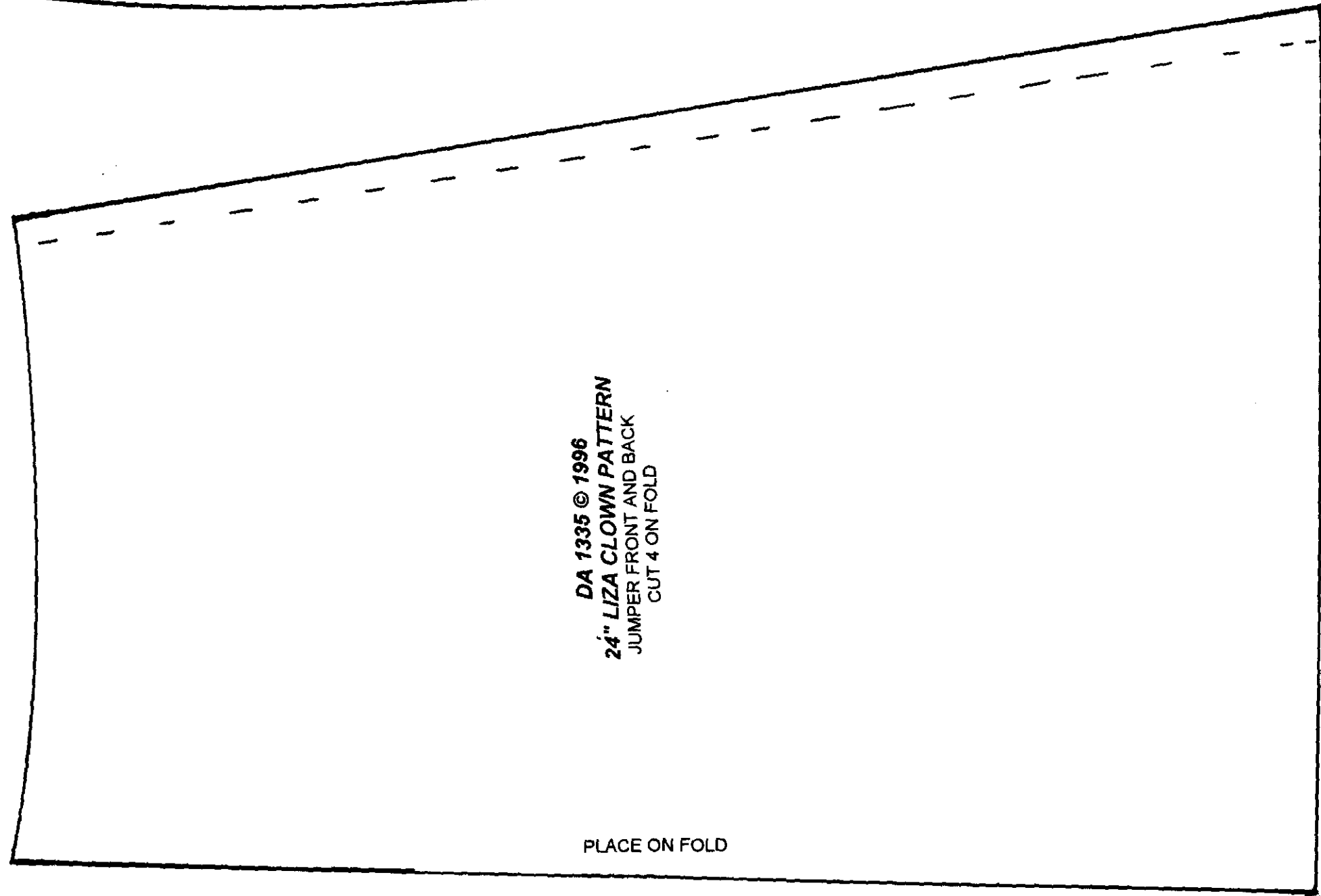
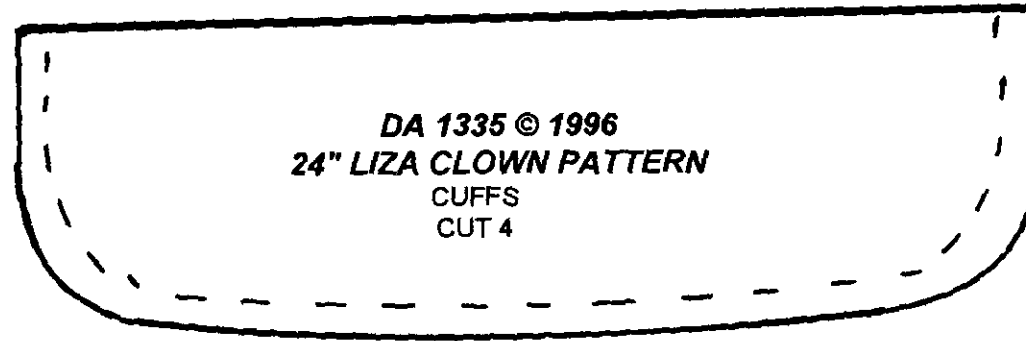
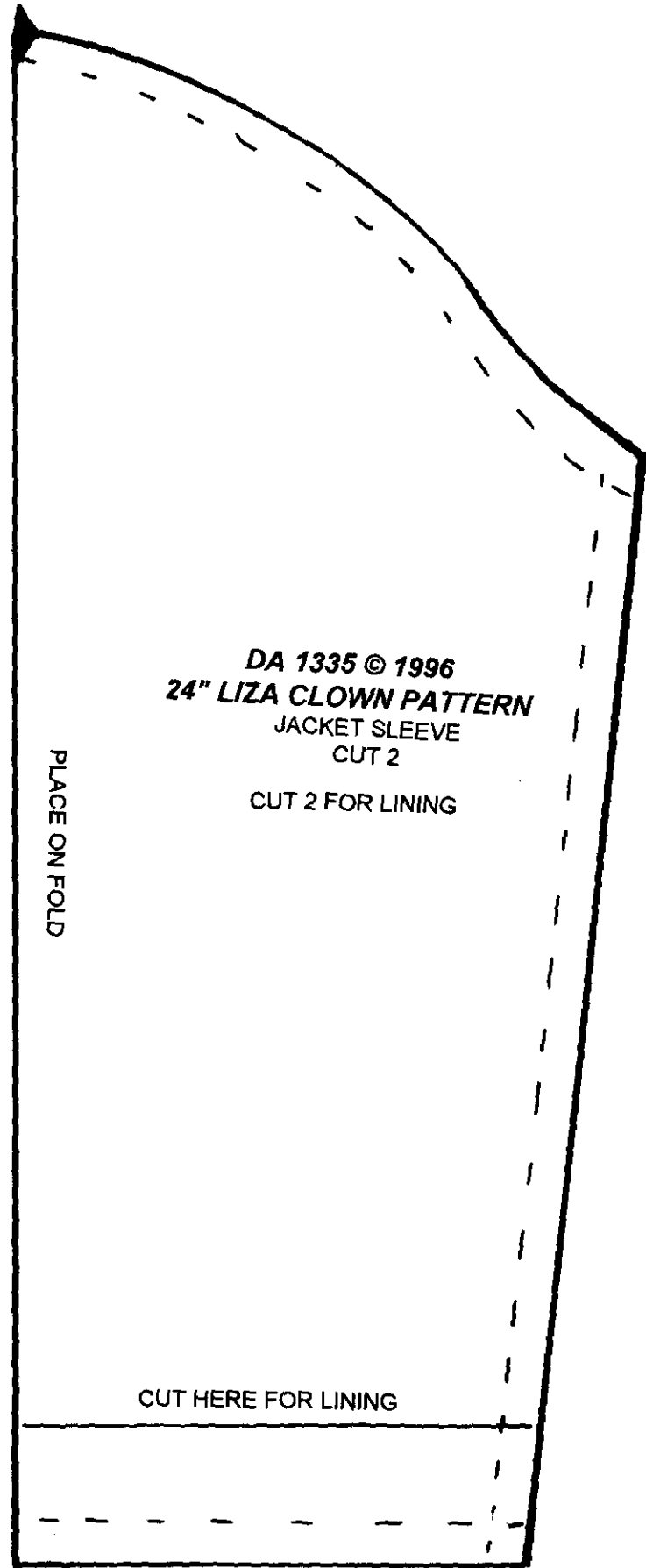
BLOUSE

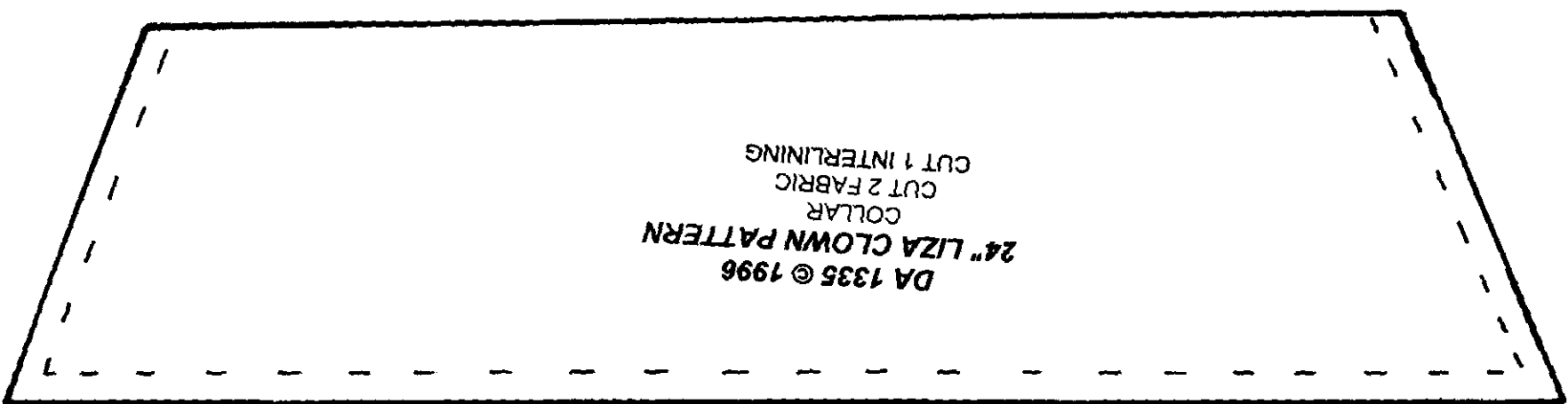
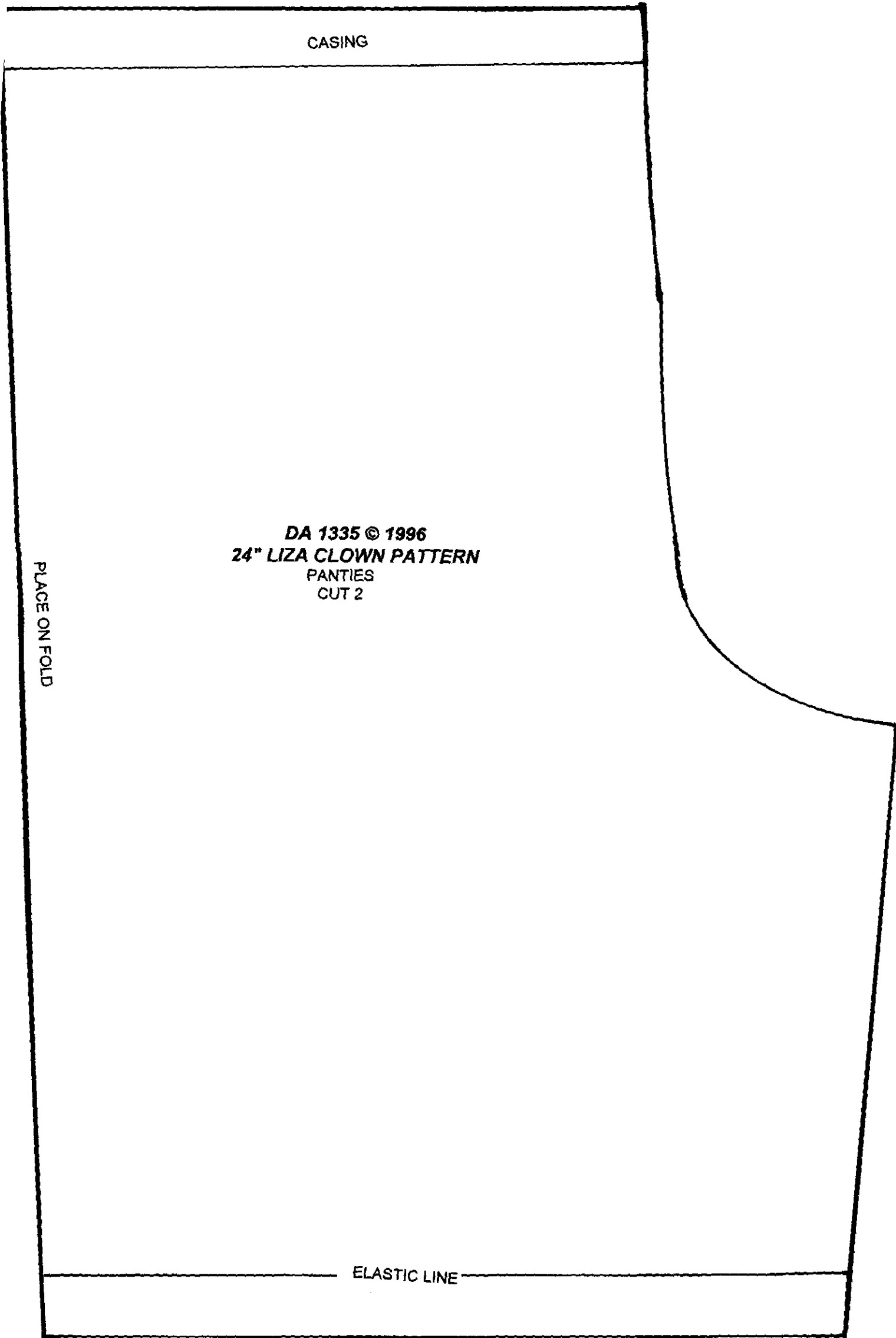
1. Sew front to back at shoulder seam, hold one back to attach latter. (this is self lined.)
2. Sew Venise trim and ribbon as indicated on pattern, being careful to have a right and a left side.
3. Stay stitch interlining to one collar.
4. Sew Venise trim to outside edges of collar easing in extra lace at corners, now lay gathered lace on top of the Venice lace again easing in extra lace at corners.
5. WRST sew collar to collar back. Turn. Stay stitch neck edge.
6. Set collar to shirt neckline.
7. WRST sew the second back to the fronts at the shoulder seams.

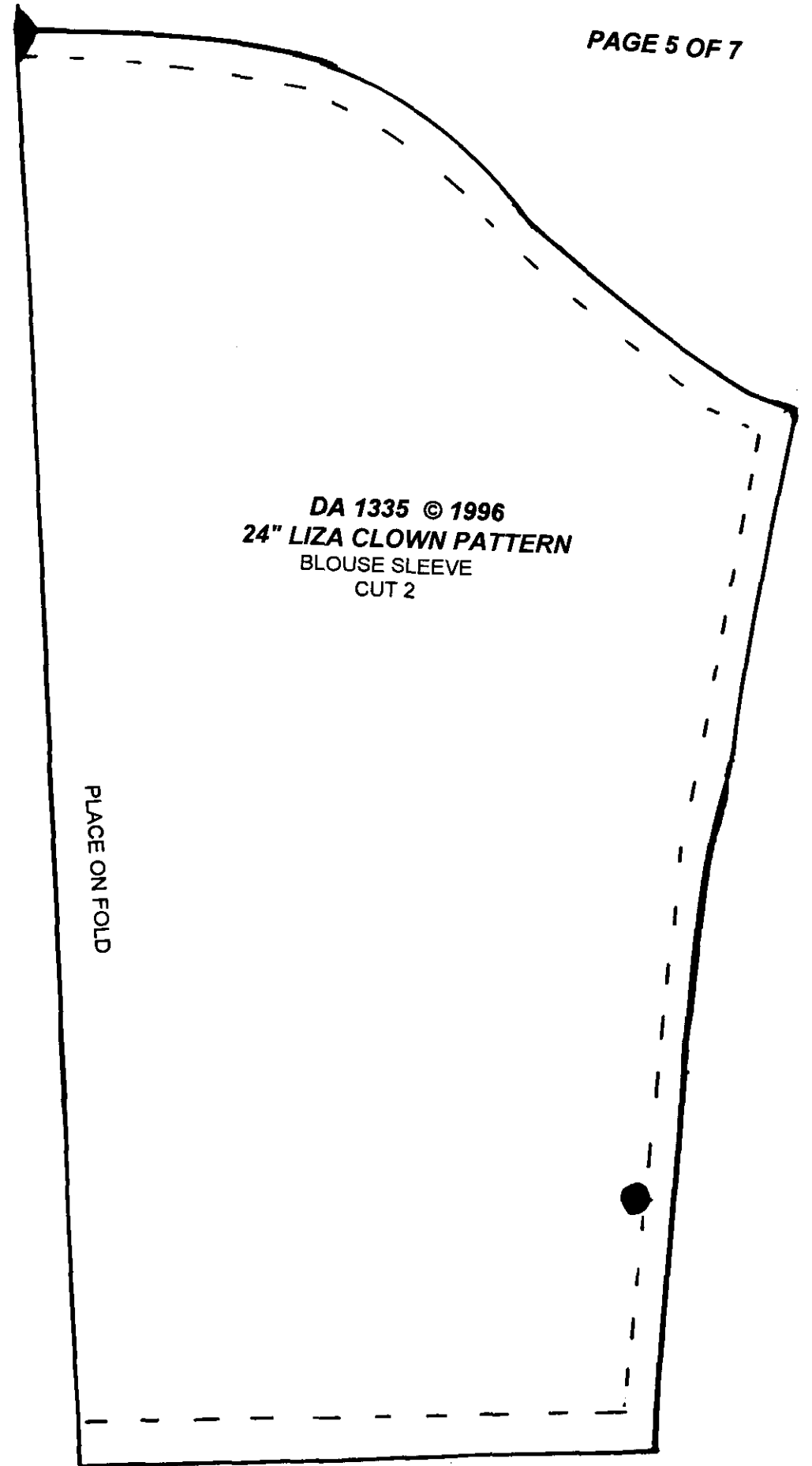
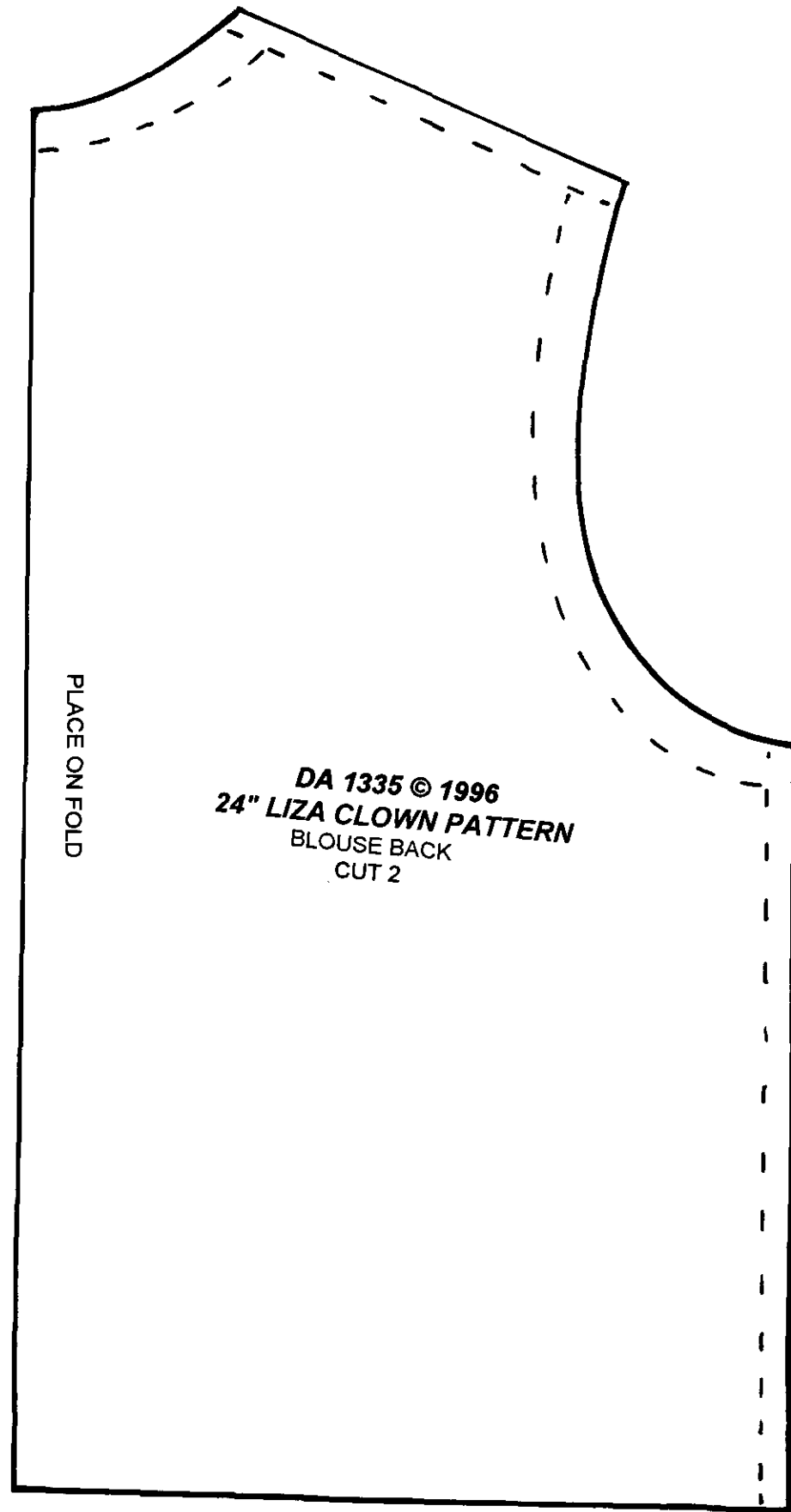
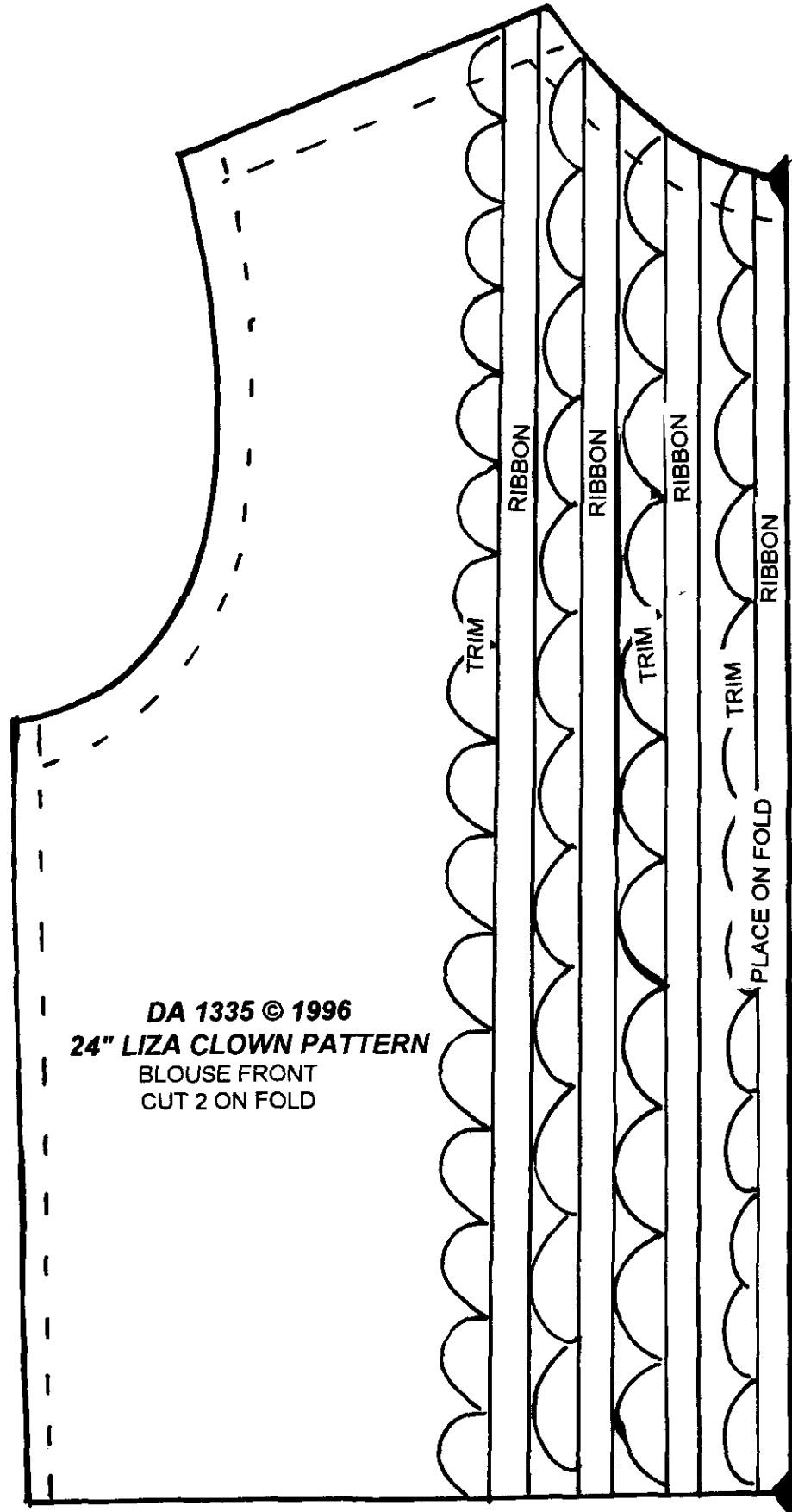
8. WRST fold neckline at notches, match shoulder seams and sew neck line. I usually sew this seam twice. Clip the curves and trim seam. Turn right side out.
9. Stay stitch lining to blouse.
10. On cuffs sew Venise trim and lace as you did for the collars. Turn right side out and stay stitch upper edges together.
11. Gather sleeves at shoulder and wrist.
12. Set cuffs on sleeves folding 1/4" back over the cuff on both sides.
13. Set sleeves to armhole matching notches to shoulder seams, and having gathers within 1 1/2" of both sides of shoulder seam.
14. Sew underarm seam starting at bottom of blouse to under arm then to notch on sleeve.
15. Fold 1/4" at hem line and sew.
16. Close with snaps and tiny buttons.

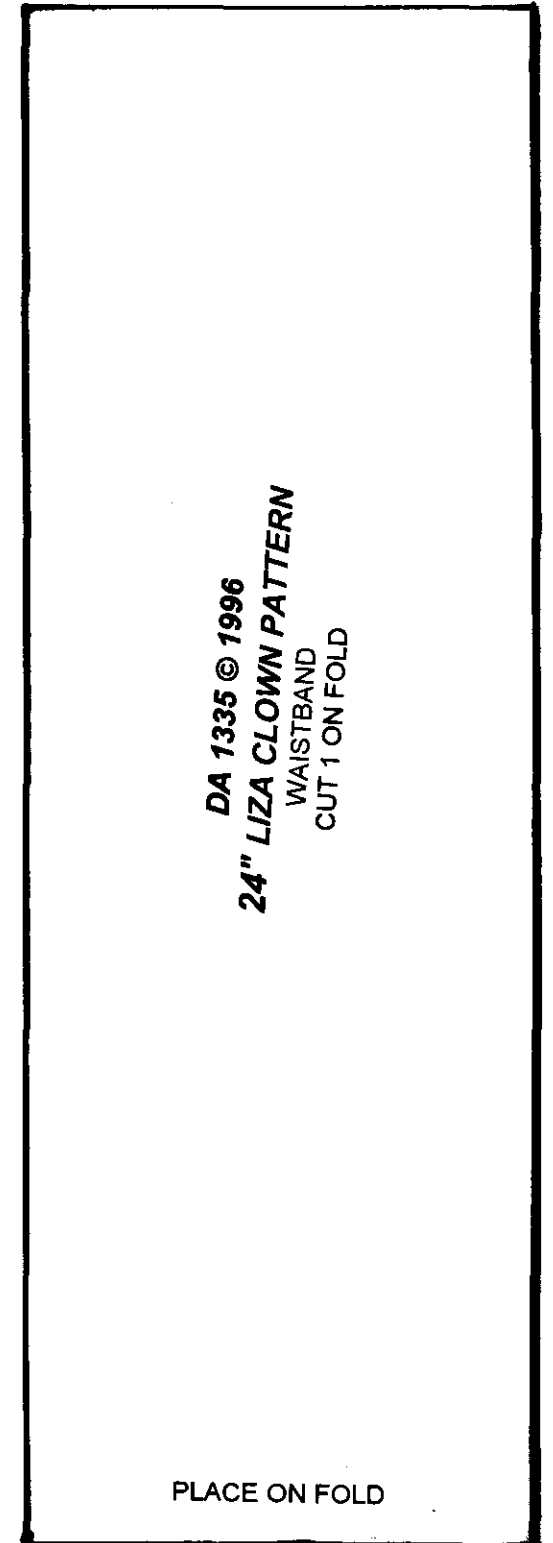
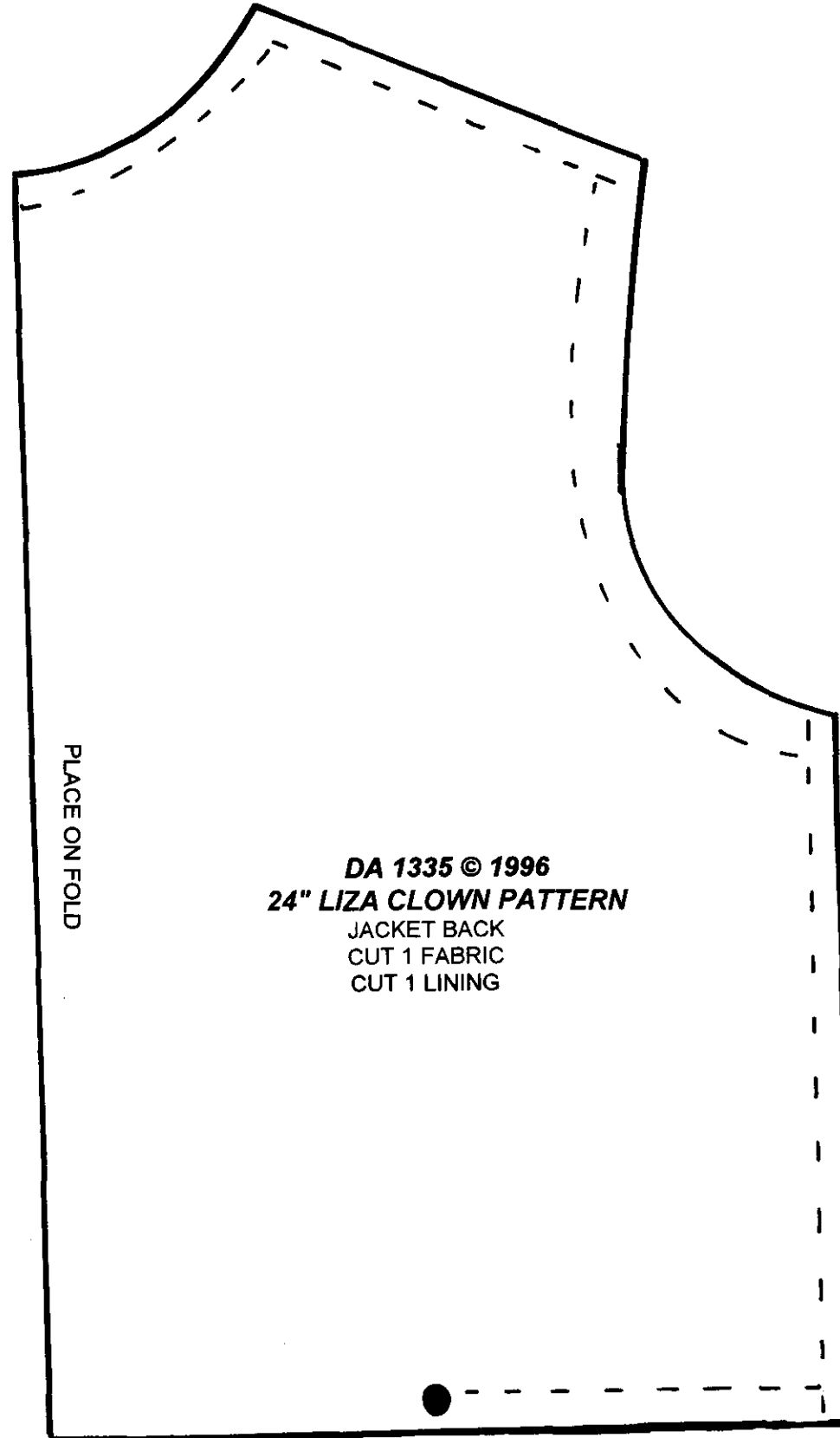
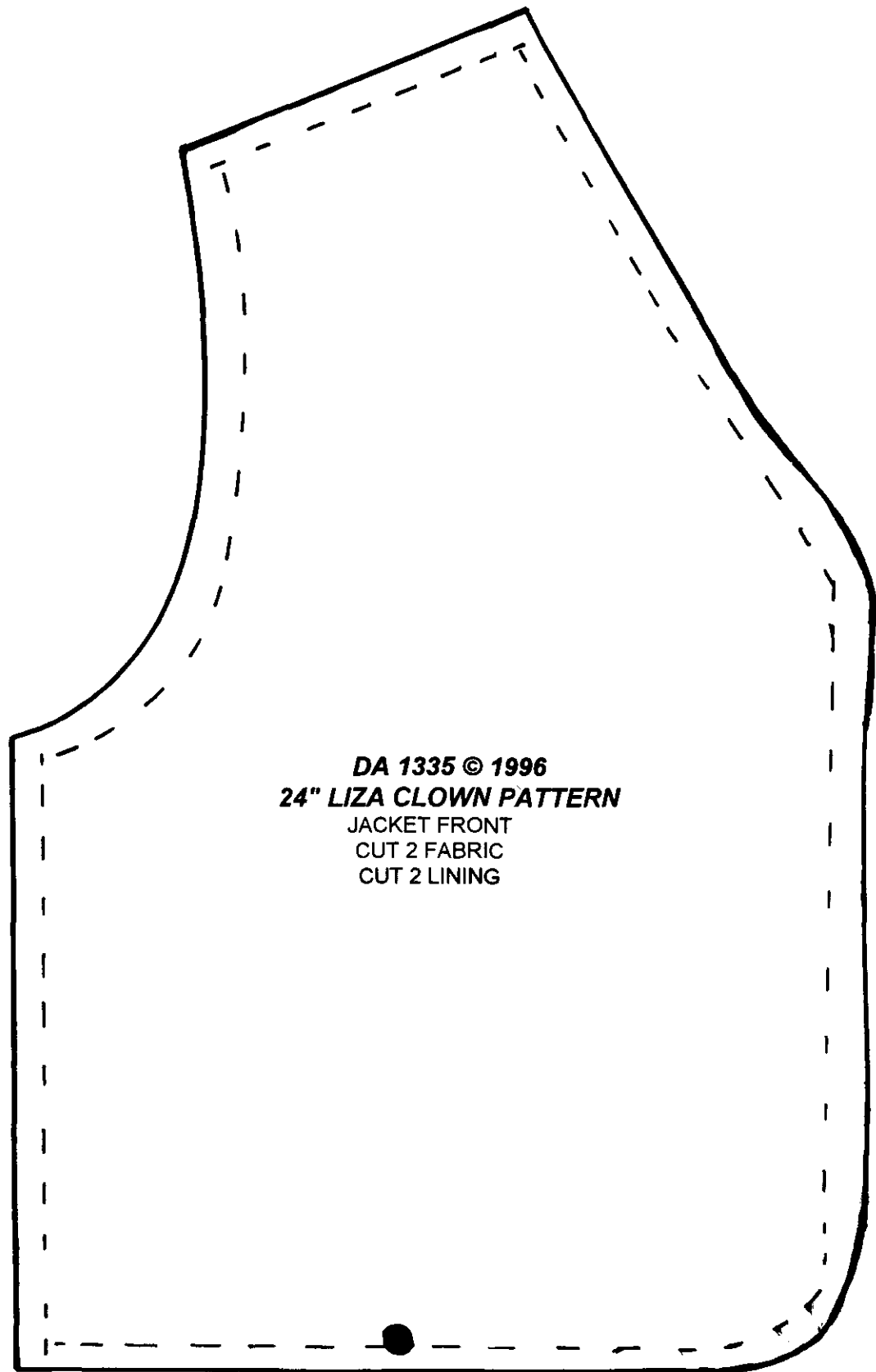
JACKET

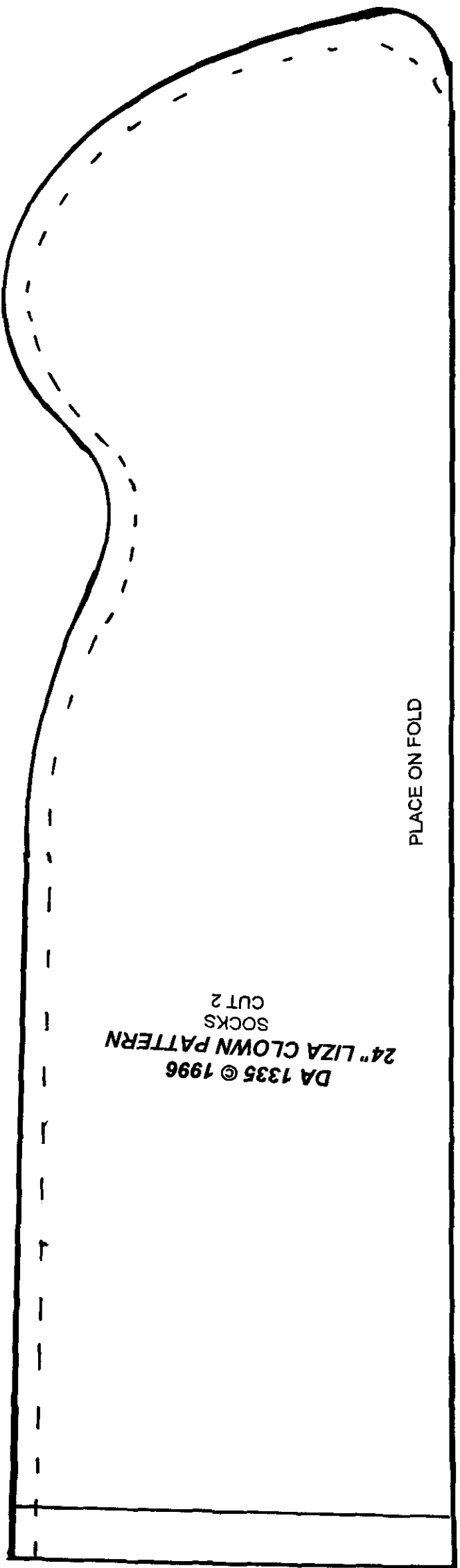
1. WRST sew fronts to back at shoulder seams on both the jacket and the lining
2. WRST set sleeves to both the jacket and the lining.
3. WRST sew from dot at lower front up to and around neck edge and down the other side to the dot. Trim and clip where necessary.
4. WRST sew wrist of jacket to wrist of lining.
5. WRST sew underarm sleeves (start at jacket lower edge up to underarm matching seams and down to lining lower edge, repeat for other side.
6. WRST sew from dot at center front to dot at center back, repeat for other side. Turn right side out by gently pulling jacket through space left open. Smooth everything into place.
7. Slip stitch opening closed.
8. Trim with buttons.











GENERAL PAINTING TECHNIQUE

AS DONE BY DONNA RUBERT

FYI:

After the initial mixing of Watersilks #2 with the dry paint, I only use water to thin my paint. The only other time I use Watersilks #2 is after washing my brush. I dip my clean brush into Watersilks #2, then blot. This is more to get the water out of my brush than it is to add medium. When mixing two colors of paint, I always mix each color separately then pull a small amount of one color into the other color; then mix completely.

Unless otherwise stated, mix paints to the consistency of toothpaste.

When I refer to antiquing a piece, that means putting color in the creases or low points of the piece (i.e.: behind the knees, in the bend of the arm, between the fingers and toes, etc.). On a head, antiquing would be done under the chin, behind the ears, in the ears, around the nose, in the space between the nose and the upper lip, and in each nostril, etc.. When I blush, I put paint on the high points on the piece (i.e. the knees, the back of the hands, the elbows, the knuckles, etc.) On the head I blush the cheeks, chin, forehead, and hairline, etc..

Clean greenware as usual, beveling the eyes to the proper size. FIRE TO A TRUE CONE 6.

1. Coat head, s/p, arms, legs, and with Watersilks #2. Wipe back with T-shirt material until there is a soft sheen.
2. Mix the antiquing color with Watersilks #2. Paint the fingernails and toenails with the antique color then blot so just a hint of color is on the nail bed. Apply and smooth out the antique color in the creases of the s/p, arms, and legs. Use a china mop to even out the color. -Reminder- antiquing is always done in the low points of a piece.
3. Mix the eyelid color with Watersilks #2. Apply the eyelid color and even out using a cosmetic Q-tip. Apply the lip crease color in the crease of the mouth. With a square shader, pull the color out just a little and make several lip lines on the lips. This color is not done heavy. Apply the antiquing to the head. Use china mop to even out color. FIRE HEAD, S/P, ARMS, LEGS, TO A TRUE CONE 018.
4. Coat entire head with Watersilks #2. Wipe back with T-shirt material until there is a soft sheen.
5. Mix eyelash color with Watersilks #1. Apply lower lashes that are short, straight, and close together. They should not be heavy.
6. Mix eyebrow color with Watersilks #1. Brush in single hairs of brows. The eyebrows should look natural, avoid long and heavy strokes. Children's brows should not be perfect.
7. Mix the lip color with Watersilks #2. Paint the lips making sure you go to and follow the lip line. Soften the outer lip with a Q-tip. Be sure there is no harsh line of paint left on the lip line. FIRE TO A TRUE CONE 018.
8. Coat head, s/p, arms, and legs with Watersilks #2. Wipe back with T-shirt material to a soft sheen.
9. Mix nail color with Watersilks #2. Paint a nail tip and a "half moon" (half moon is at the base of each nail) on each finger and toenail. This should be done very light. You want just a hint of color to look natural.
10. Mix blush color with Watersilks #2. Using your forefinger, apply the blush color to cheeks, chin, temple, forehead, hairline, knuckles, knees, toes, etc. Even out the color with a china mop. -Reminder- When blushing, always put paint on the high points. When you are satisfied with the color intensity FIRE TO A TRUE CONE 018.
11. Coat head with Watersilks #2. Wipe back with T-shirt material.
12. With the eyebrow color, take a Q-tip and scrub the color on top of the fired on brows. Use a clean Q-tip and soften the color until it appears like a light shadow under the brow hairs. With the eyelash color, shade over the lower lashes the same way; softening out the color at the lower edge away from the eye opening. If there is a second color on the eyelid, now is the time to apply it. Be sure to stay away from the eyebrow color you just applied.
13. Mix the lip accent color with Watersilks #2. Accent the fullest part of the center of the lower lip. Accent the fullest part of the upper lip (the milk lip). Doing this makes a "hot spot" of color on the lips.
14. Mix the cheek accent color with Watersilks #2. Blush the top half of the already blushed cheek area with the cheek accent color. Applying this color makes a "hot spot" of color on the cheeks. FIRE TO A TRUE CONE 018.
15. With the eyebrow/eyelash color, paint accent hairs on the brows and the lower lashes. Accent hairs are extra hairs to fill in or put on "top" of shading done in Step 12.
16. If the head has teeth (and you are painting them with china paint), mix teeth color with Watersilks #2 and paint the teeth. Be sure you don't get any of this color on the lips.
17. Check the color intensity on all of your pieces. If you need more color anywhere now is the time to intensify your colors. If you are completely satisfied with your work, FIRE TO A TRUE CONE 018.
18. The final step is to apply a no-fire sealer on the lips and teeth. The sealer should be thinned with water to cut the gloss somewhat. Note: This sealer can be removed with alcohol when it is completely dry.