

Atreum Lighting ARA LED Bar Data Sheet

Revision 2019.04.07



Versions

Item	Length	Note
ARA-40	1154 mm	Excluding end brackets
ARA-20	594 mm	Excluding end brackets

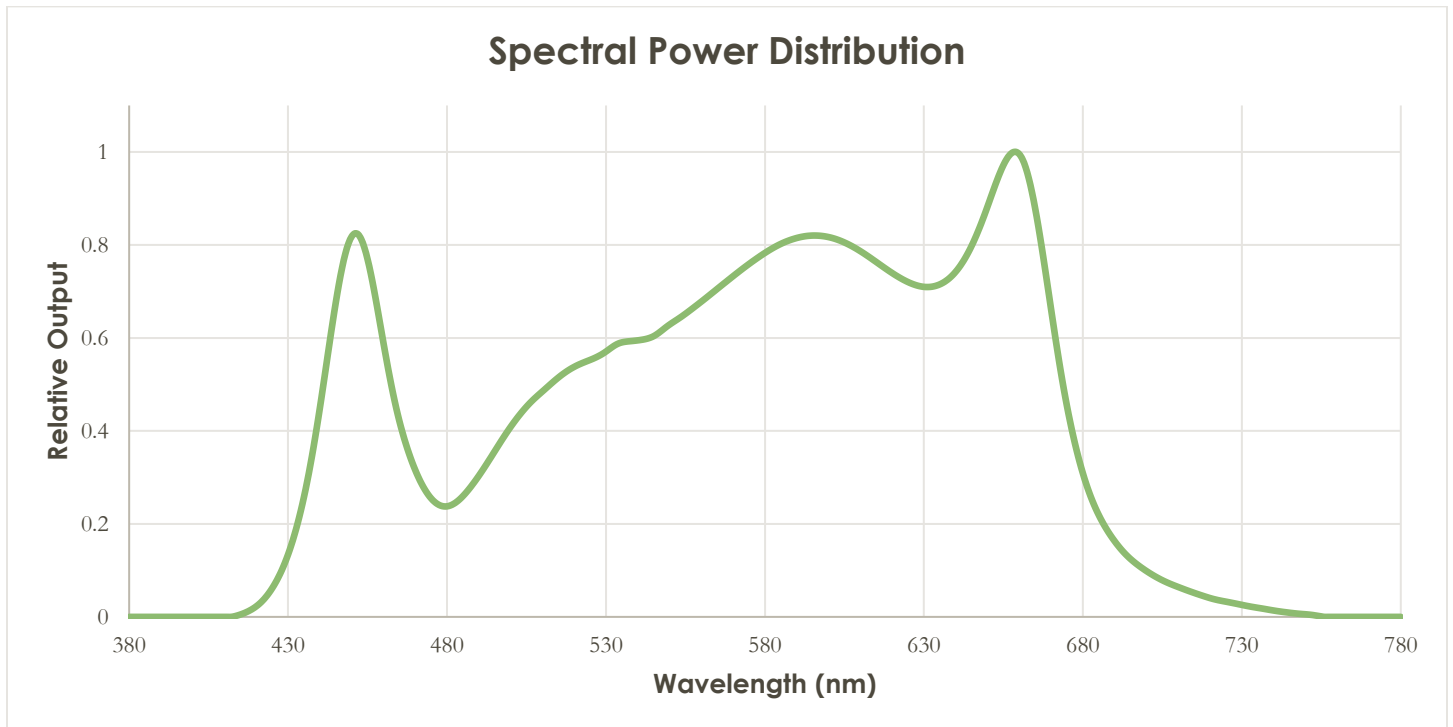
Basic Information

Item	Rating	Unit
Rated Lifetime	>50,000	hours
Ingress Protection (IP)	N/A	---
Ambient / Operating Temperature	-20 to +50	°C
Storage Temperature	-30 to +80	°C

Optical Characteristics

Item	Rating (Typical)	Unit	Remark
Correlated Color Temperature (CCT)	3600	K	
Photosynthetic Photon Flux (PPF)	298	µmol/s	ARA-40, (400 – 700 nm)
PPF Efficacy	2.54	µmol/J	
Color Rendering Index (CRI)	92	---	
Light Distribution Angle	120	degrees	

Spectrum



Electrical Characteristics

ARA-40

Current (mA)	Voltage (VDC)	Board Power (W)	Remark
500	47.68	23.8	@ 55°C
1000	49.12	49.1	
1500	50.35	75.5	
2000	51.37	102.7	
2300	52.09	119.8	
2500	52.39	131.0	

ARA-20

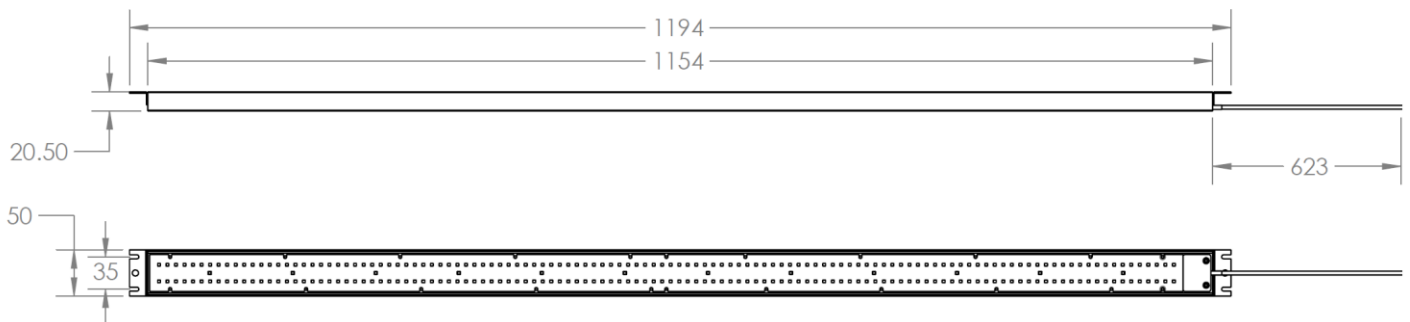
Current (mA)	Voltage (VDC)	Board Power (W)	Remark
250	47.31	11.8	@ 55°C
500	48.77	24.4	
750	49.83	37.4	
1000	50.77	50.8	
1150	51.33	59.0	
1250	51.70	64.6	

Mechanical Specifications

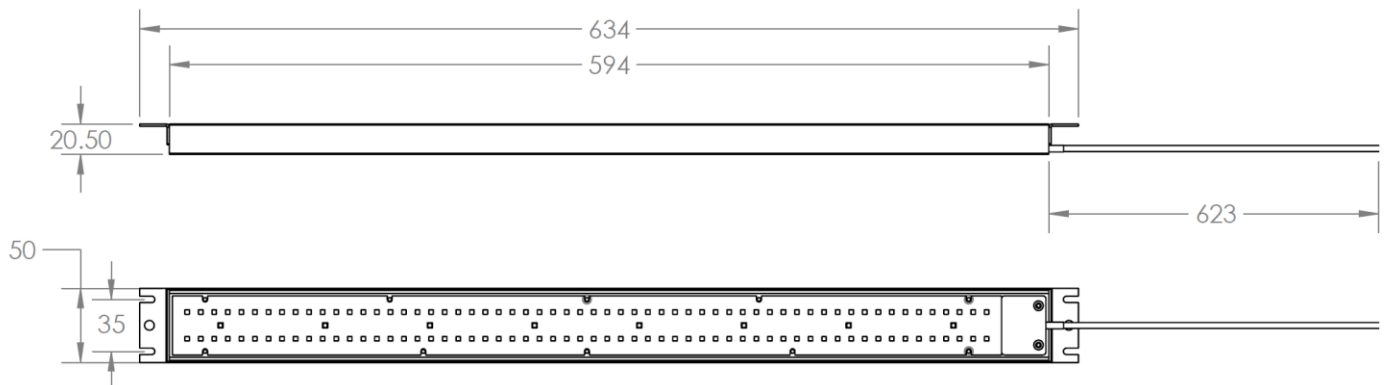
Specification	ARA-40	ARA-20
Module Length	1154 mm	594 mm
Module Width	50 mm	50 mm
Module Height	20.5 mm	20.5 mm
Weight		
PCB Material	Aluminum	
Heatsink Material	Aluminum	
Wire Gauge	18 AWG	
Wire Length	623 mm	
Wire Termination	Unterminated leads	

Dimensioned Drawing (Units in mm)

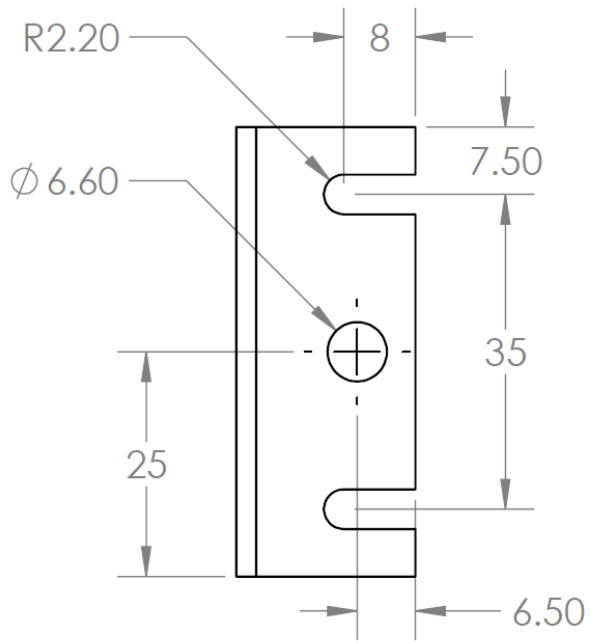
ARA-40



ARA-20



End Bracket Detail



Revision History

Date	Description of Revision
2019-02-02	Document created
2019-04-07	Added PPF, PPF Efficacy values

Contact Information

Atreum Lighting

General Inquiries: hello@atreumlighting.com

Support: support@atreumlighting.com

Sales: sales@atreumlighting.com