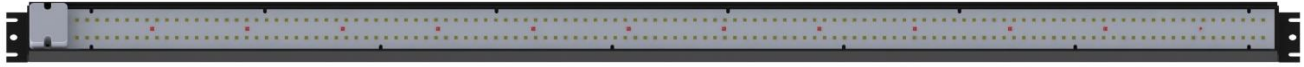


Atreum Lighting ARA-41 LED Light Bar Data Sheet

Revision 2020.01.27



Versions

Item	Length	Note
ARA-41	1100 mm	Excluding end brackets

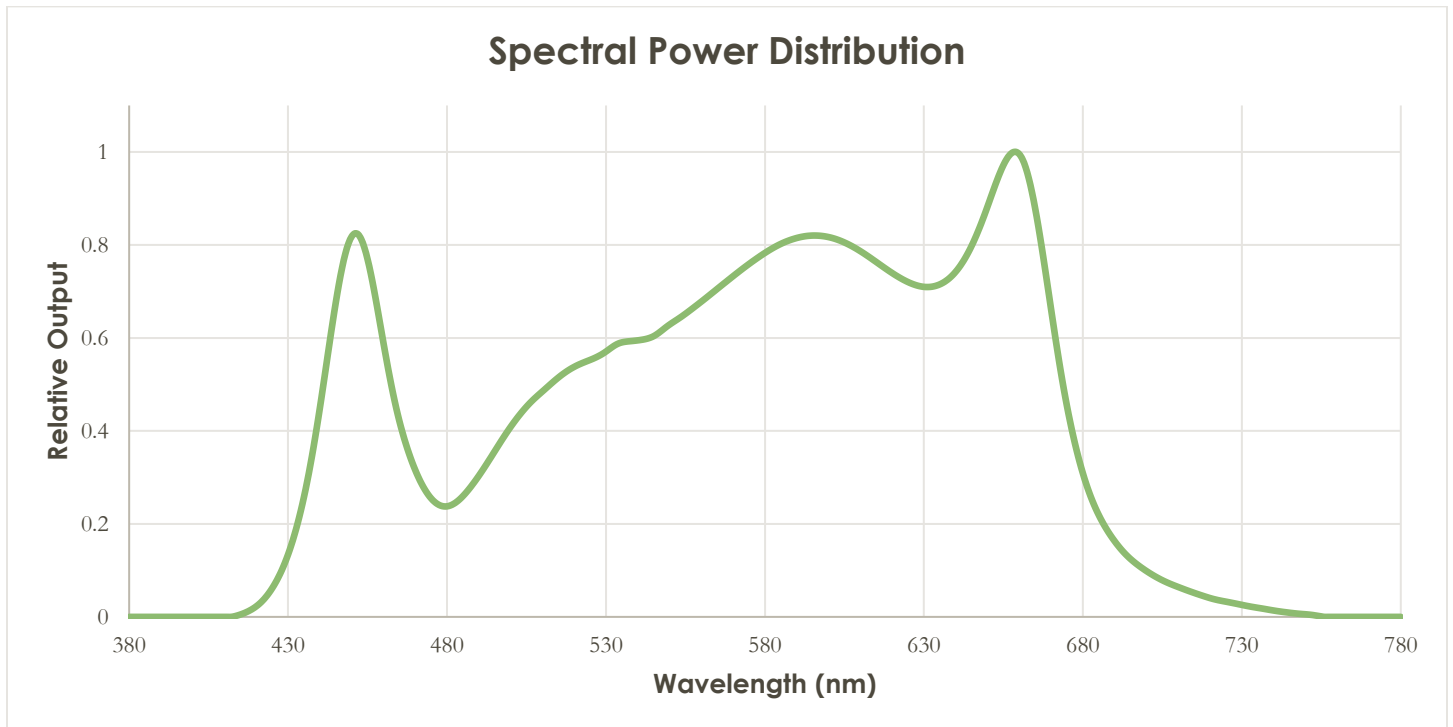
Basic Information

Item	Rating	Unit
Rated Lifetime	>50,000	hours
Ingress Protection (IP)	IP65	---
Ambient / Operating Temperature	-20 to +50	°C
Storage Temperature	-30 to +80	°C

Optical Characteristics

Item	Rating (Typical)	Unit	Remark
Correlated Color Temperature (CCT)	3600	K	
Photosynthetic Photon Flux (PPF)	298	µmol/s	ARA-41, (400 – 700 nm)
PPF Efficacy	2.54	µmol/J	
Color Rendering Index (CRI)	92	---	
Light Distribution Angle	120	degrees	

Spectrum



Electrical Characteristics

ARA-41

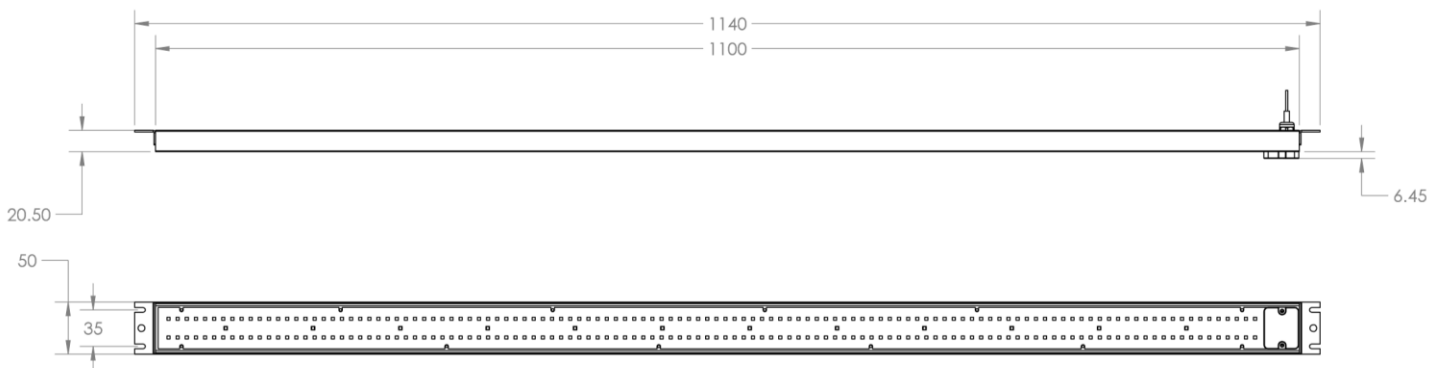
Current (mA)	Voltage (VDC)	Board Power (W)	Remark
500	47.0	23.5	@ 55°C
1000	48.4	48.4	
1500	49.6	74.4	
2000	50.7	101.4	
2300	51.3	118.0	
2500	51.7	129.3	

Mechanical Specifications

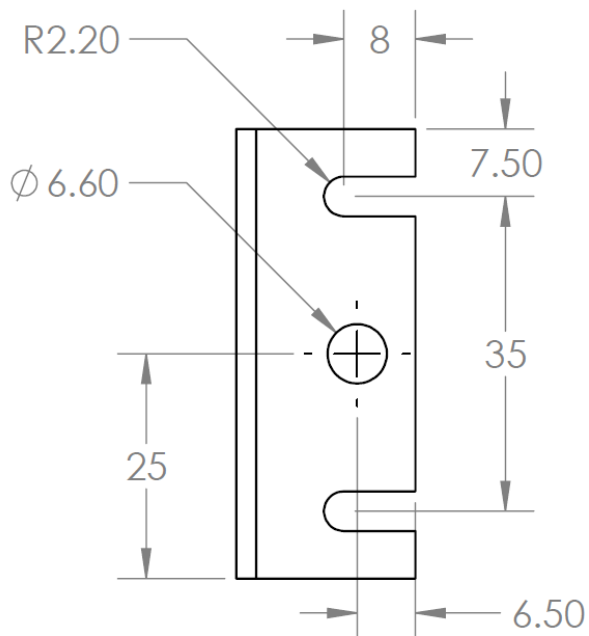
Specification	ARA-41
Module Length	1100 mm
Module Width	50 mm
Module Height	20.5 mm
Weight	1340 g
PCB Material	Aluminum
Heatsink Material	Aluminum
Wire Gauge	18 AWG
Wire Length	1400 mm
Wire Termination	Unterminated leads

Dimensioned Drawing (Units in mm)

ARA-41



End Bracket Detail



Revision History

Date	Description of Revision
2020-01-27	Document created

Contact Information

Atreum Lighting

General Inquiries: hello@atreumlighting.com

Support: support@atreumlighting.com

Sales: sales@atreumlighting.com