

Wicker Patio Bistro Bar Set



Assembly Instructions

Made in Vietnam

The owner's manual contains important safety information as well as assembly, use and maintenance instructions. Keep the packaging and bags away from children and dispose of all packaging properly before use. Keep this manual for future reference.



**PLEASE DO NOT
RETURN THIS
PRODUCT
TO THE STORE**

We will be happy to correct any problems that you may have, or answer any of your questions regarding the purchase of this product. Please contact us at our Toll Free customer service number 1-800-599-8898 for any assistance and replacement parts. Thank You.

Dist. by TDC USA, Inc. Fairfield, NJ 07004

©2022 All Rights Reserved.

Made in Vietnam

Item 22589

www.tdcusainc.com

**WARNING!**

- **Keep all children and pets away from assembly area. Children and pets should be supervised when they are in the area of the product construction.**
- **Some parts may contain sharp edges. When assembling and using this product, basic safety precautions should always be.**
- **Please read all the instructions and warnings before assembling. In order to make the whole product adjust to the best, please install all the screws on the product and tighten all the screws after adjusting the product which can stand on the floor even. Not intended for commercial use.**
- **Check all bolts for tightness before use.**
- **IMPORTANT - check and tighten bolts often to keep them secure**

• **CHOKING HAZARD** - Small parts. Not suitable for children under 36 months. The product contains small parts, keep children away when assembling.

• **ADULT ASSEMBLY REQUIRED.**

Always remove protective material and poly bags and dispose before assembly.

TABLE PARTS



AA (x8)
M6x20 Bolt



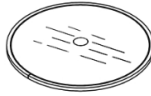
BB (x4)
M6x30 Bolt



CC (x12)
Washer



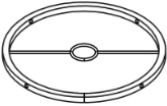
EE (x1)
Hex Key



A (x1)
Table Top



B (x4)
Leg



C (x12)
Table Ring

CHAIR PARTS



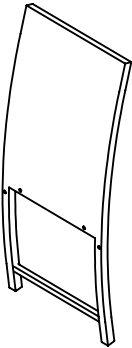
AA (x16)
M6x40 Bolt



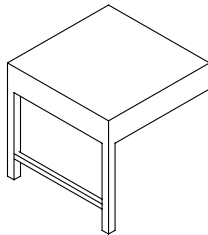
BB (x8)
M6x15 Bolt



CC (x24)
Washer



A (x4)
Chair Back



B (x4)
Chair Seat



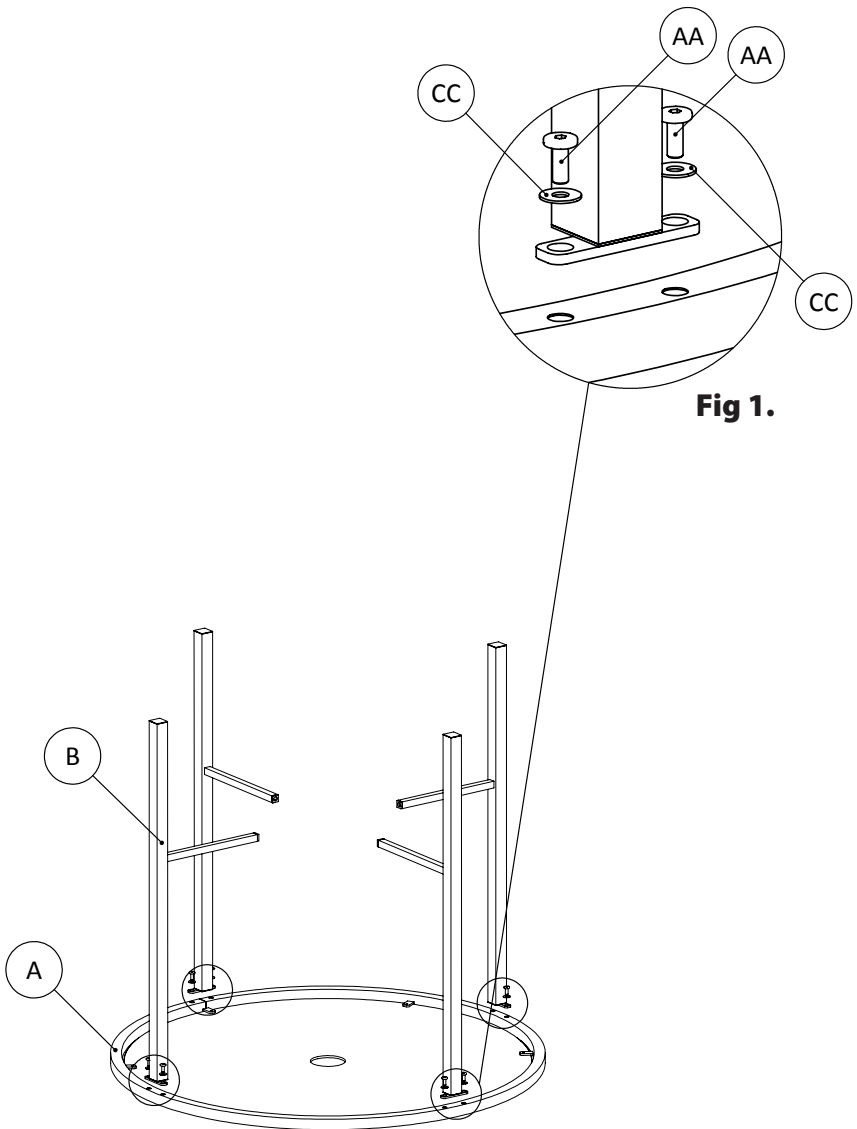
C (x4)
Bottom Support



D (x4)
Seat Cushion

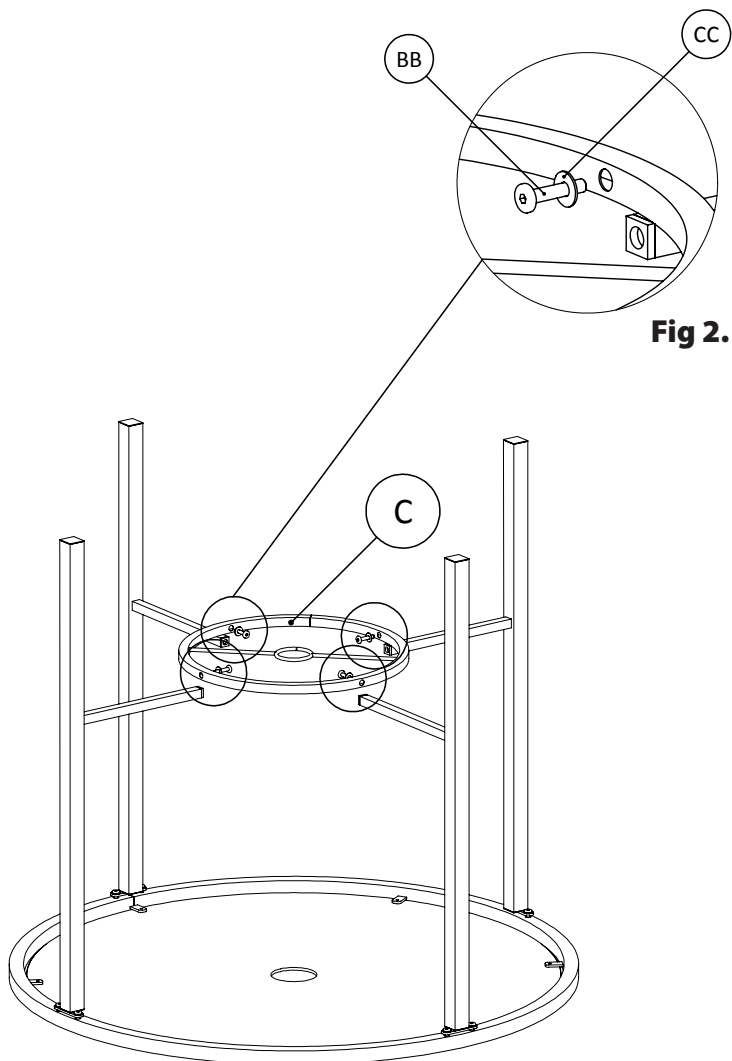


EE (x1)
Hex Key

**Fig 1.**

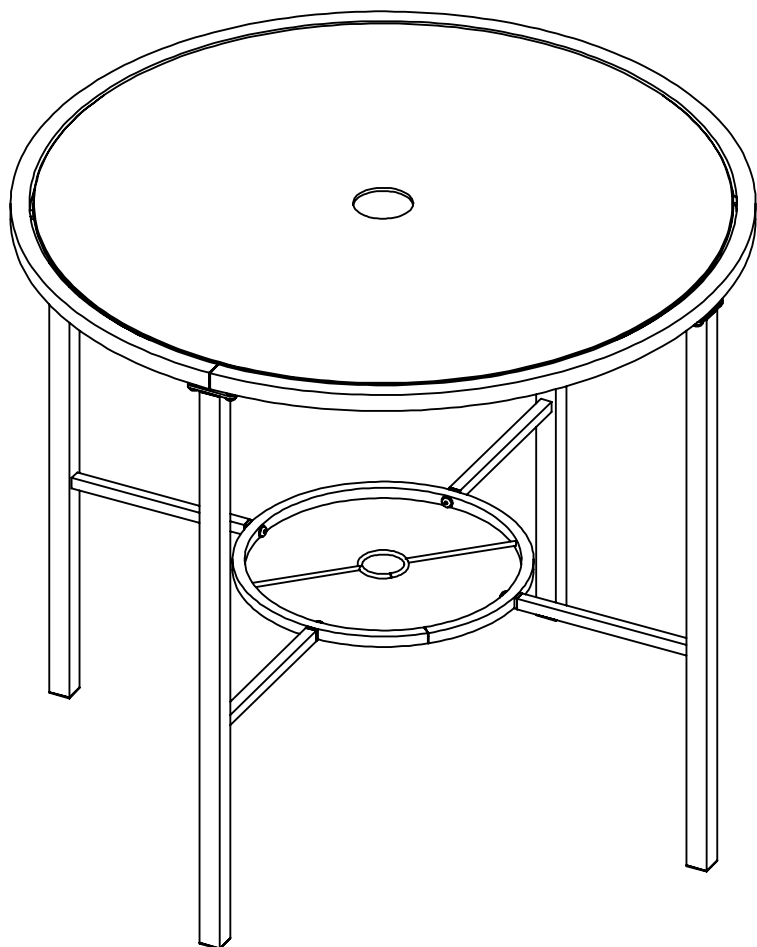
Step 1:

Carefully remove glass from Table Top (A) and set it aside until assembly is complete. Set Table Top (A) upside down on a soft, non-abrasive surface as illustrated above. Insert two M6x20 Bolts (AA) with Washers (CC) through eyelets at the top of each Leg (B), and into the bolt-threading found along the rim of Table Top (A), see Fig. 1.



Step 2:

Insert one M6x30 Bolt (BB) with Washer (CC) through eyelets found on the inside of Table Ring (C), and into the bolt-threading found at the end of the horizontal extensions of Legs (B), see Fig. 2. Use Hex Key (EE) to tighten all bolts left loose throughout assembly process.



Step 3:

Turn table right-side up and carefully set the glass into the center of Table Top (A). The table is now ready to use.

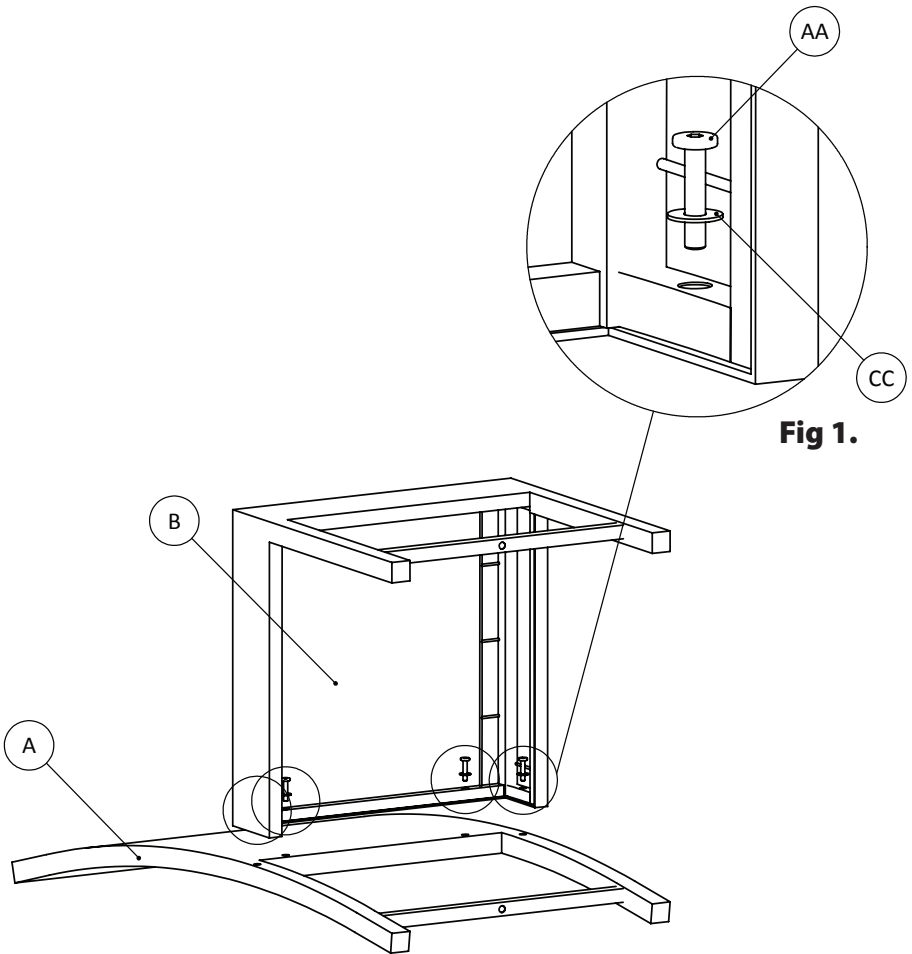
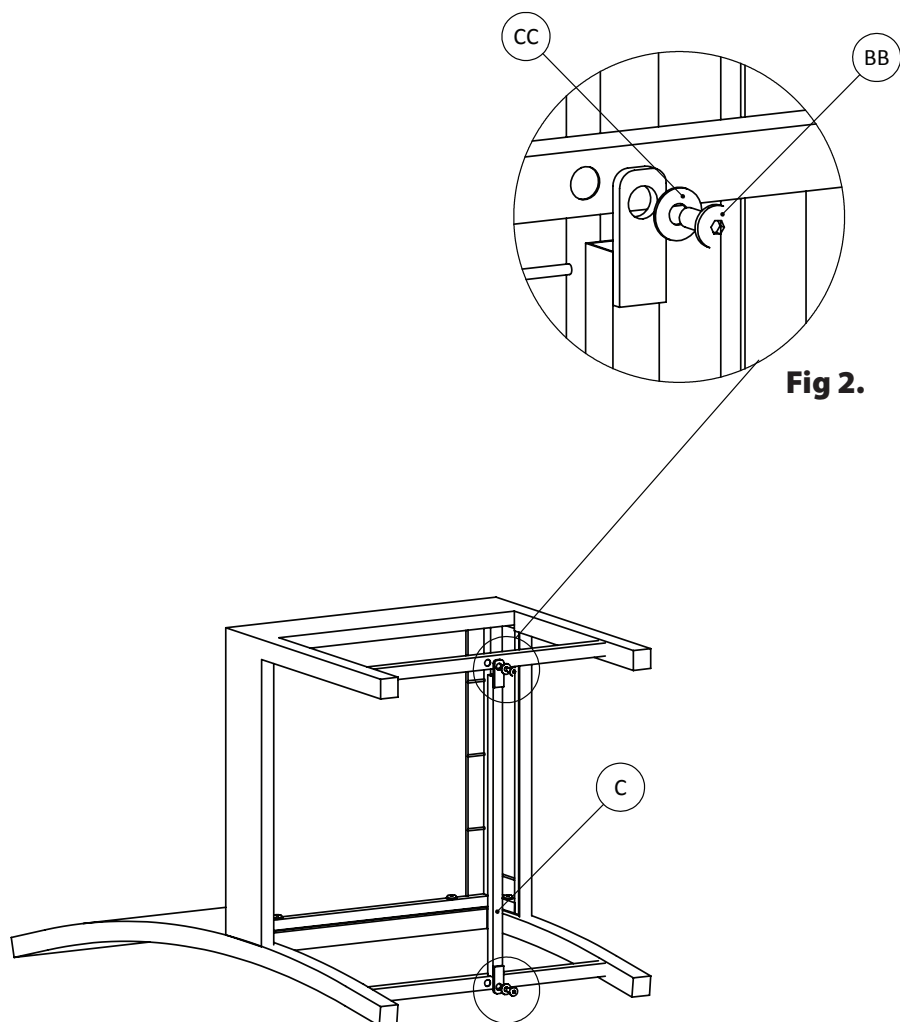


Fig 1.

Step 1 :

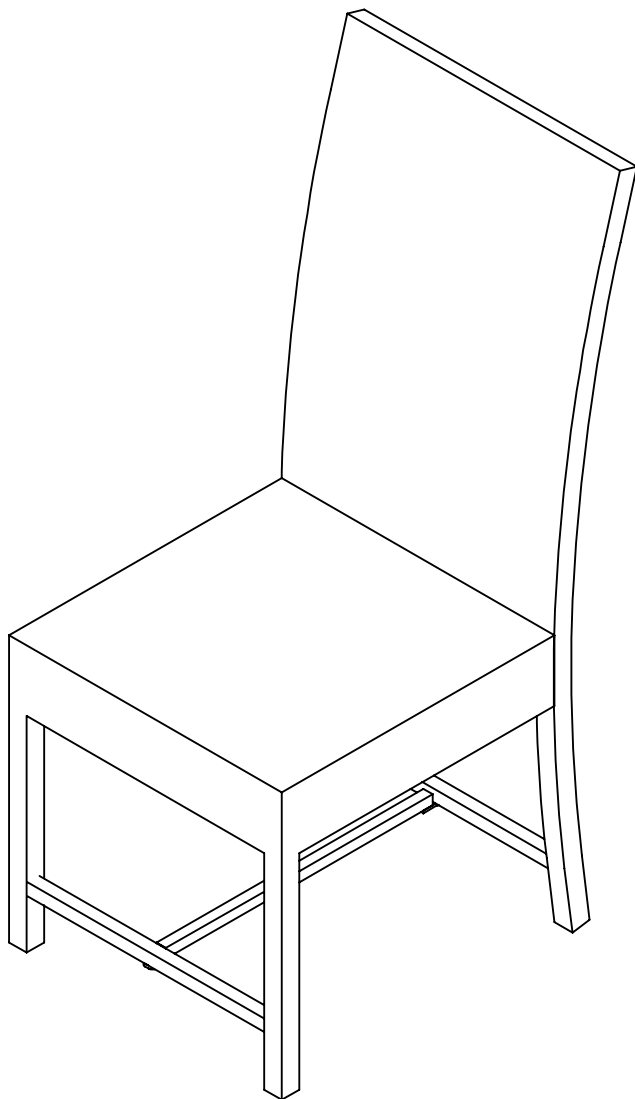
Insert two M6x40 Bolts (AA) with Washers (CC) through the backend [underneath] of the seat of Chair Seat (B), and into the bolt-threading found in the center of Chair Back (A), see Fig. 1. Follow these steps to assemble the opposite side of Chair Seat (B) to Chair Back (A).

**Fig 2.**

Step 2:

Place Support (C) in between the footrest of Chair Seat (B), and the horizontal bar near the bottom of legs of Chair Back (A) as illustrated above.

Insert one M6x15 Bolt (BB) with Washer (CC) through the bracket at the end of Support (C) into the bolt-threading found underneath the footrest of Chair Seat (B), see Fig. 2. Insert one M6x15 Bolt (BB) with Washer (CC) through the bracket at the opposite end of Bottom Support (C), and into the bolt-threading found underneath the horizontal bar of Chair Back (A). Use Hex Key (EE) to tighten all bolts left loose throughout assembly process.



Step 3:

Turn the chair right-side up when finished. Place Seat Cushion (D) onto Chair Seat (B). Secure the cushion to the chair by connecting the fastening straps around Chair Back (A), see Fig. 3. Your chair is now ready to be used. Follow these steps to assemble the remaining three chairs.

LIMITED WARRANTY

Please contact our service hotline by phone, email, or fax when needing assistance with assembly or with faulty parts. This allows us to provide support in the event of possible operator errors.

All furniture manufactured and sold by TDC USA, Inc. is warranted to the original purchaser against defects in workmanship and materials. If a product manufactured by TDC fails during the first year from date of purchase under the terms of our limited warranty, TDC will replace the item at no charge. After one year, it will be the original purchaser's responsibility to pay for freight and packing. TDC reserves the right, in the case of discontinued or out of production models, to replace with an item of similar quality. (Glass breakage is not warranted.)

NOTE: You must retain original receipt to obtain warranty!

FRAMES:

Frames are warranted against defects in materials and workmanship from the date of original purchase. Damage to frames or welds due to commercial use, improper assembly, exposure to water and sub-freezing temperatures, and/or abuse are not covered.

FABRIC:

Fabric on cushions, slings, and umbrellas is warranted against separation at the seams. Fading, mildew, and/or discoloration due to exposure to elements, chemicals, and spills are not covered.

POWDER COAT AND/OR PAINT:

The finish is warranted against blistering, peeling, or cracking. Fading resulting from exposure to the elements, chemicals, and spills are not covered. Scratches and chips due to normal wear and use are not covered.

FREIGHT & PACKING:

TDC will be responsible for shipping, handling, and packaging charges for all valid warranty claims.

CARE & MAINTENANCE:

Be careful to never allow water build up in frames as this will cause corrosion and freeze damage in cold climates. Wash all frames with a solution of mild soap and water. Rinse with clean water and dry with a soft absorbent cloth towel. Frames can be treated with a liquid wax for maximum protection against UV rays and/or salty damp air. If your set includes cushions, slings, and/or an umbrella, they may be cleaned by hand with a solution of soap and water with a clean water rinse.

LIMITED WARRANTY EXCLUSIONS:

- Damage caused by acts of nature
- Wind damage
- Failure caused by unreasonable, unanticipated, or abusive use
- Failure caused by a lack of reasonable and necessary care and maintenance
- Normal fade of fabrics, upholstery, or woven materials
- Glass table tops
- Bursting or cracking of tubing due to exposure to water and freezing temperatures
- Changes in wood color due to the natural aging of the wood

***A sales receipt must be provided to validate
1-Year Limited Warranty.***

Customer Service:

Monday - Friday • 9:00 am - 5:00 pm

Phone: 800-599-8898

Email: support@tdcusainc.com

**TDC USA, Inc.
5 Industrial Rd, STE 1
Fairfield, NJ 07004-3017**

Wicker Patio Bistro Bar Set

Dist. by TDC USA, Inc. Fairfield, NJ 07004
©2022 All Rights Reserved. Made in Vietnam.

Item #22589

Questions and Comments
1-800-599-8898 (9 am - 5 pm EST)
www.tdcusainc.com