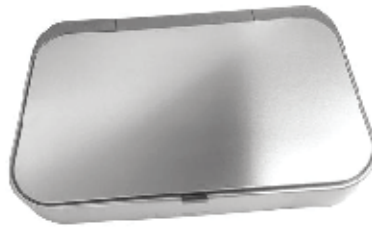


# install guide

## sensor can lid replacement



**Lid assembly PD6254**  
for ST2033 rectangular sensor can

**Tools you need:**  
small flathead screwdriver



video guide

## Removing Lid

1. Remove batteries or AC adapter from the sensor can.  
Wave hand over sensor to make sure there is no power.



2. Open lid and liner rim and push back until it is locked into place.



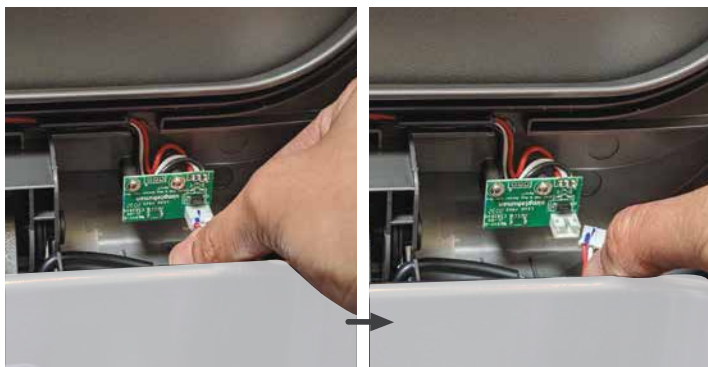
3. Insert screwdriver between the lid and panel, then push the screwdriver down to unlock the panel.



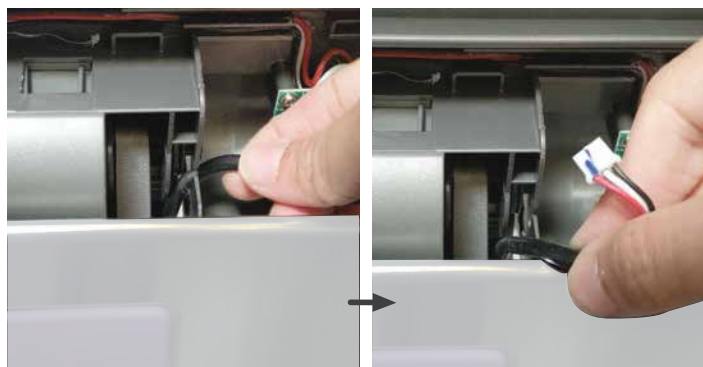
4. Remove inner panel around the lid.



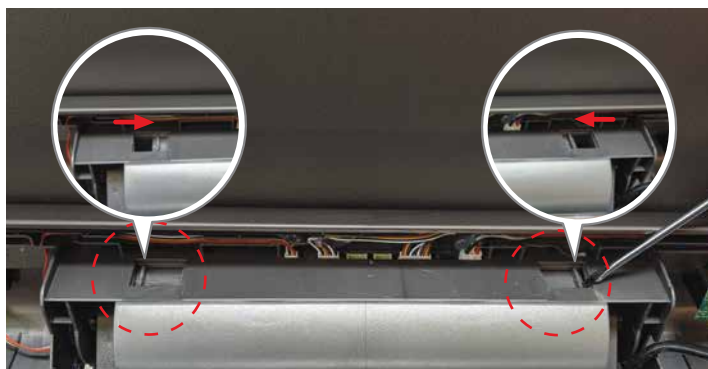
5. Unplug connector from the electronic board.



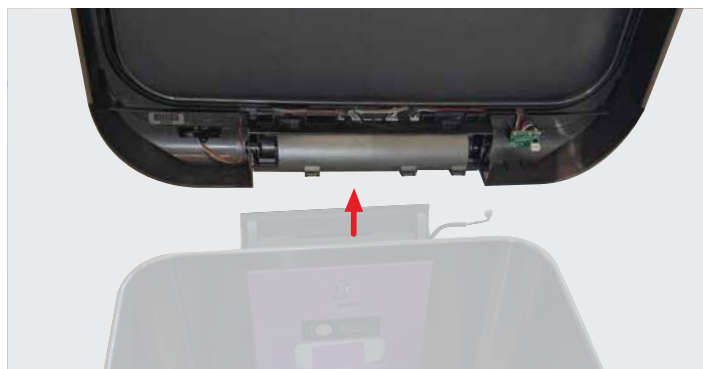
6. Unhook wire from its groove.



7. Use screwdriver to slide tabs toward the center. Make sure both tabs have been moved to their end-most positions.

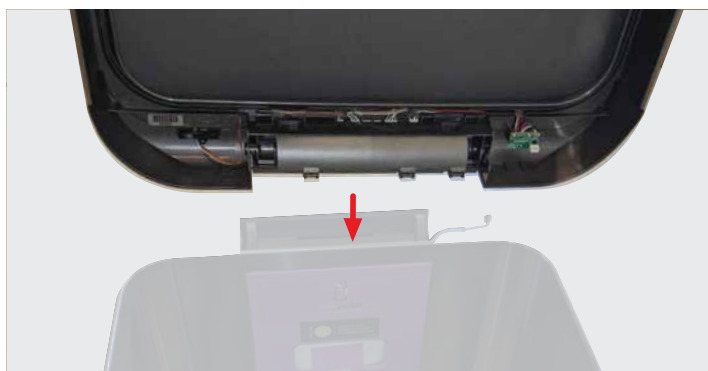


8. Firmly grasp lid assembly and pull it upward.

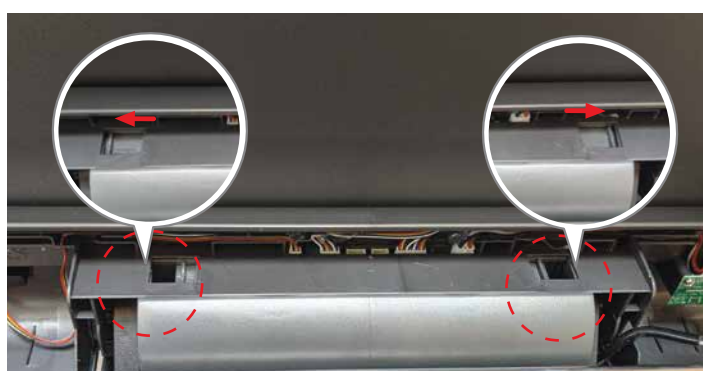


## Installing Lid

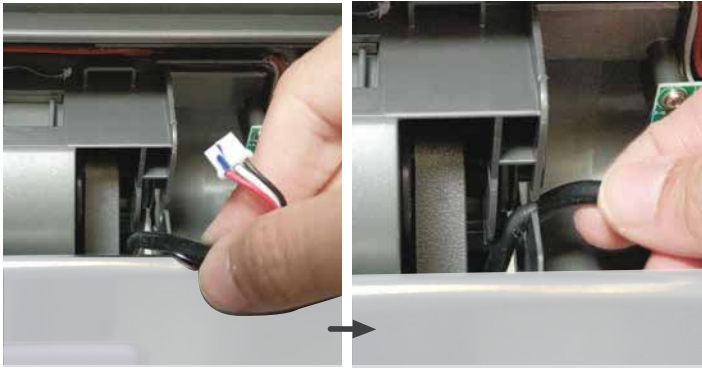
1. Remove inner panel from the new lid assembly. Place new lid assembly onto the sensor can in the open position.



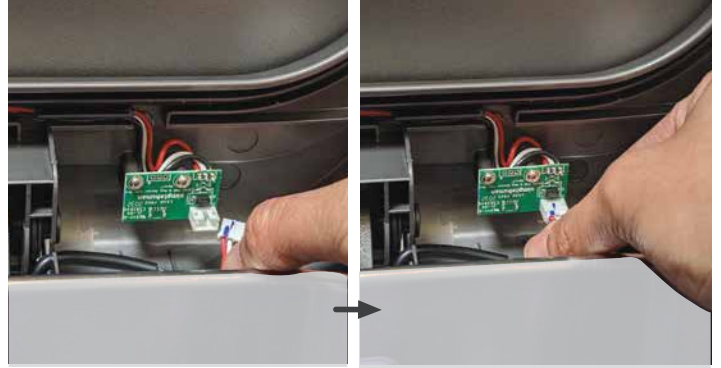
2. Slide tabs outward using screwdriver. Start with the left side first. **Tip:** You may need to constantly adjust lid while sliding the right tab.



3. Hook wire through its groove.



4. Plug connector into the electronic board.



5. Place inner panel back into lid. Make sure panel snaps into place.



6. Close lid and insert batteries or connect AC adaptor.



## Final Result



product questions or returns  
[customer.support@simplehuman.com](mailto:customer.support@simplehuman.com)