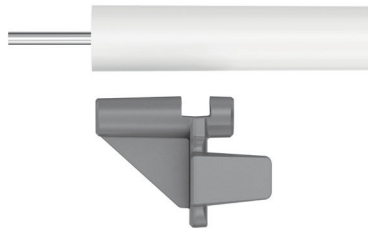


install guide

Damper replacement



Damper assembly PD6303
for 5L can CW2096/CW2101/CW2102

Tools you need:

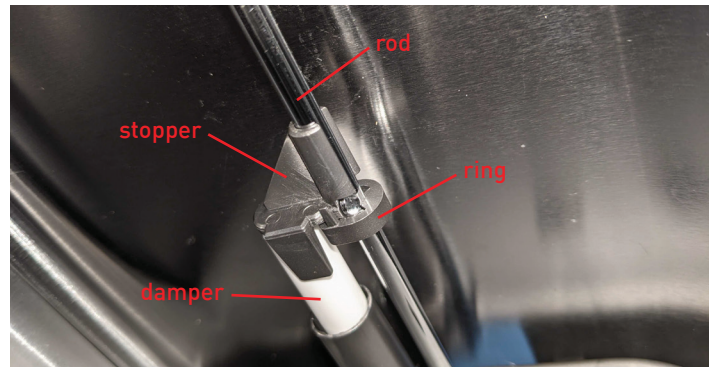
- New damper
- New pusher
- Small flathead screwdriver

Removing Damper

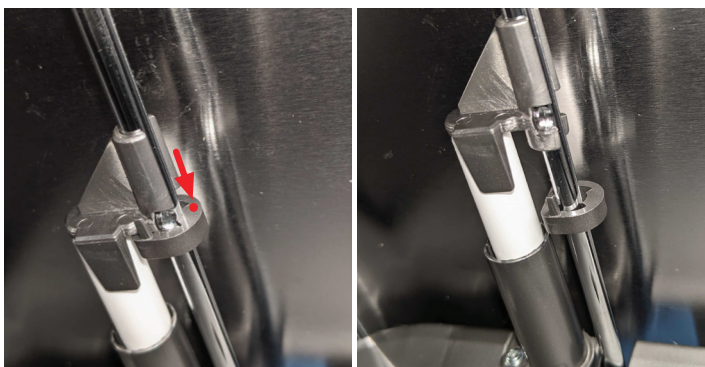
1. Remove bucket from can.



2. Lift liner pocket and locate damper behind liner pocket.



3. Using flathead screwdriver, push ring piece to disengage it from pusher.



4. Remove (unclip) pusher from rod.



5. Remove damper.



Installing Damper

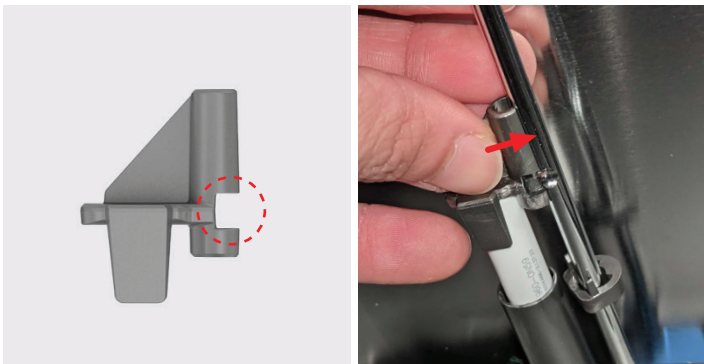
1. Insert new damper. **Note:** Align and insert damper's shaft into the slot.



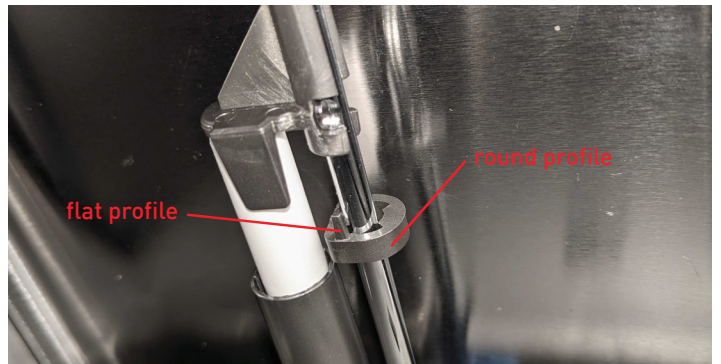
2. Locate protrusion on the rod.



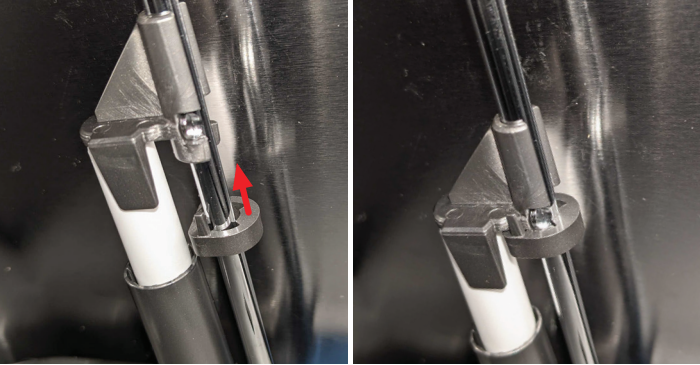
3. Clip pusher from rod. Make sure the rod protrusion is within pusher gap.



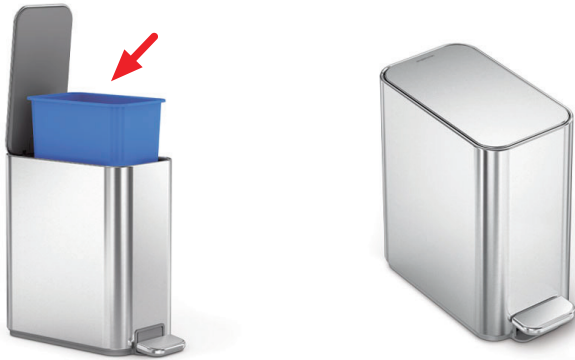
4. Align ring so its round profile is facing outward and flat profile is facing the damper.



5. Slide ring towards you until it clips to pusher.



Final Result



product questions or returns
customer.support@simplehuman.com