

# install guide

## semi-round sensor can lid replacement



**Lid assembly PD6265, PD6266**  
for ST2009, ST2021 semi-round sensor can

**Tools you need:**  
-phillips head screwdriver  
-flathead screwdriver



video guide

### Removing Lid

1. Remove batteries from can. Wave hand over sensor to make sure there is no power.



2. Open lid and liner rim and push back until it is locked into place.



3. Remove the liner pocket plate inside the can. Use a flathead screwdriver to remove the liner pocket plate.



4. Use a Philips head screwdriver to remove the 4 screws from the body of the can.



5. Pull up on lid to remove the full assembly.



## Installing Lid

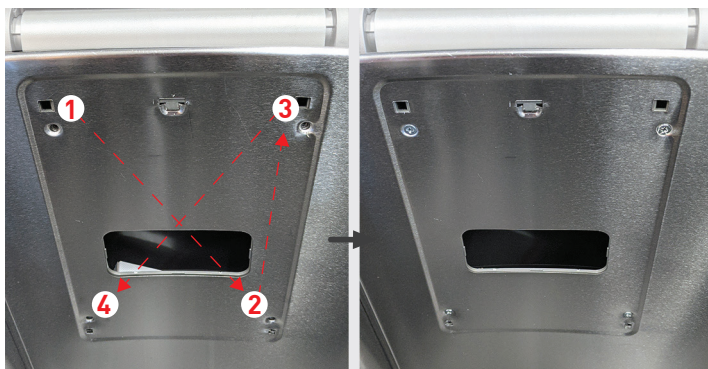
1. Align tab on assembly with its groove on back of can.



2. Insert the tab into the groove.



3. Reinsert the screws. Make sure to install the screws in a diagonal pattern.



4. Reinsert liner pocket plate. Ensure the liner pocket opening and the mouth of the plate are properly aligned.



5. Close lid and liner rim and reinsert batteries.



## Final Result



product questions or returns  
[customer.support@simplehuman.com](mailto:customer.support@simplehuman.com)