

install guide

dual compartment step can lid replacement



Lid assembly PD6257
for CW2025 58L dual compartment step can

Tools you need:
-new lid assembly
-needle-nose pliers



video guide

Removing Lid

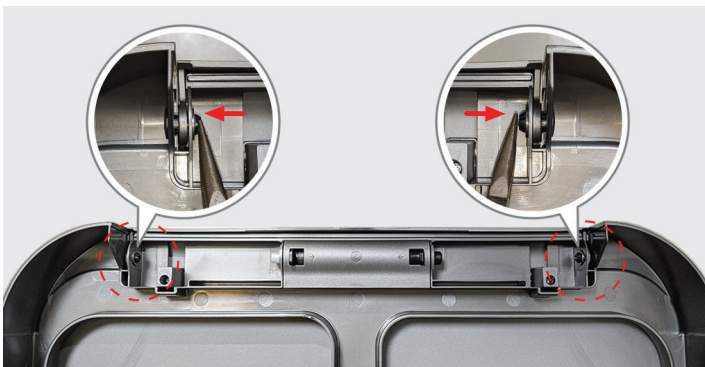
1. Open lid and liner rim and push back until it is locked into place.



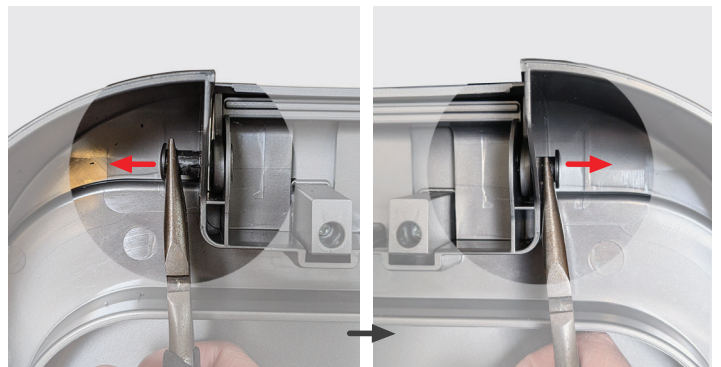
2. Remove lid assembly from can body by pinching center tabs and pulling lid assembly upward.



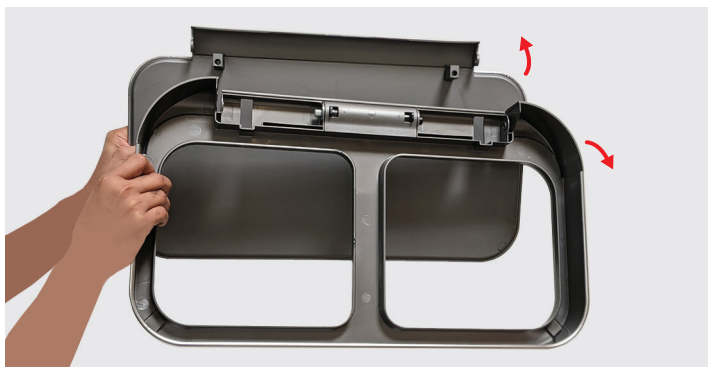
3. Identify fastener pins on lid and use needle-nose pliers to push each pin out.



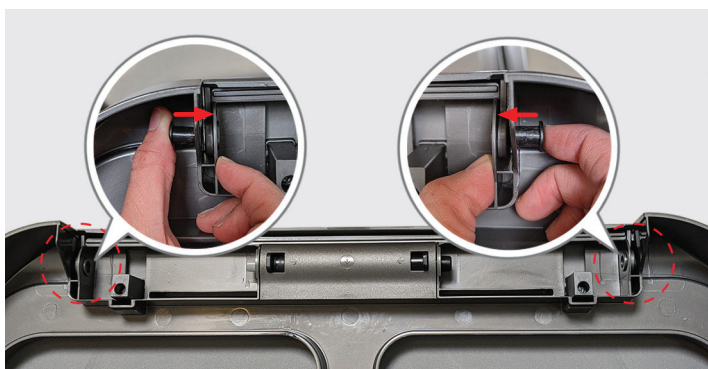
4. Use pliers to remove both pins.



5. Separate trim from lid.



2. Insert fastener pins back into both hinges. Firmly press on each pin until it snaps. This means they are now locked into place.



Installing Lid

1. Place new lid onto trim.



3. Pinch center tabs and place new lid assembly onto the can.



Final Result



product questions or returns
customer.support@simplehuman.com