

install guide

slim/semi-round liner rim step can air damper replacement



Air damper assembly

Section 1: for slim plastic liner rim cans - CW1390/CW1391/CW1392

Section 2: for slim liner rim cans - CW2044/CW2067/CW2069/CW2071/CW2087DC

Section 3: for semi-round liner rim cans - CW2030/CW2075/CW2029



video guide

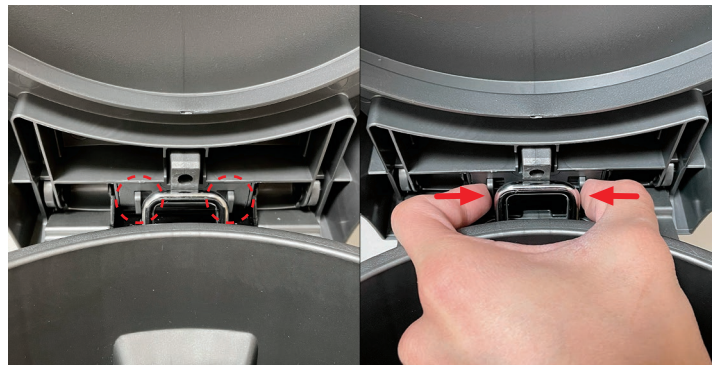
Section 1 slim plastic liner rim cans

Removing Air Damper

1. Open lid and liner rim and push back until it is locked into place.



2. Locate tabs on inner hinge. Squeeze both tabs toward center.



3. Pull lid up while squeezing tabs to remove it from can.



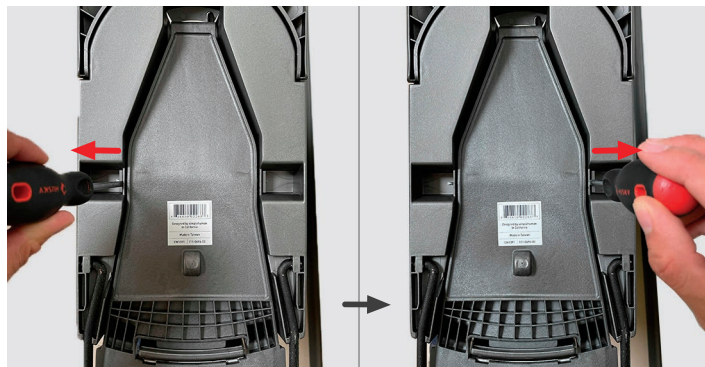
4. Turn can upside down. Push stabilizer bar up.



5. Push one end of stabilizer bar toward middle to remove it from can.



6. Remove pedal pins. **Tip:** You may need to use a flathead screwdriver to remove pins.



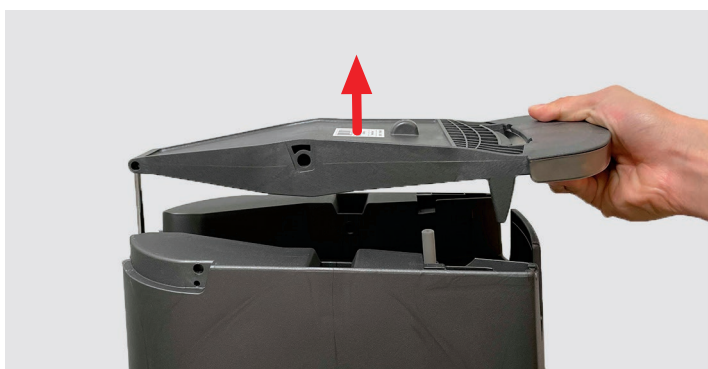
7. Push rear stabilizer up.



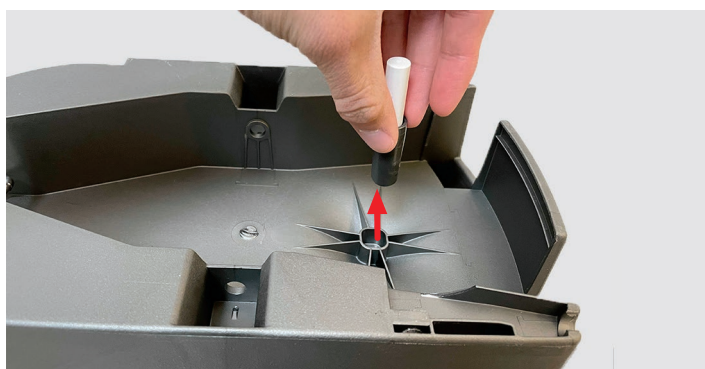
8. Pull one side out to release rear stabilizer.



9. Simultaneously lift pedal and vertical rod up to remove from can.

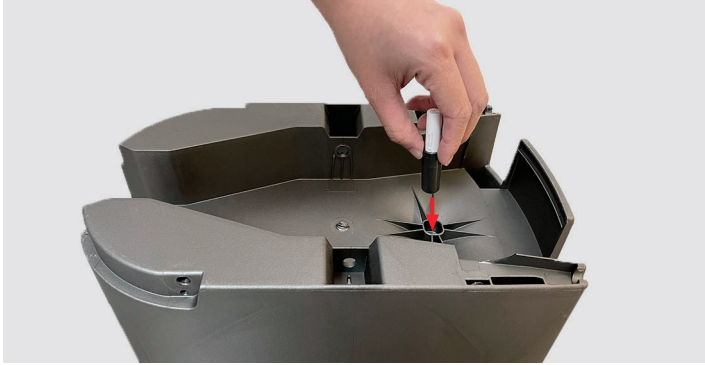


10. Remove linear damper.



Installing Air Damper

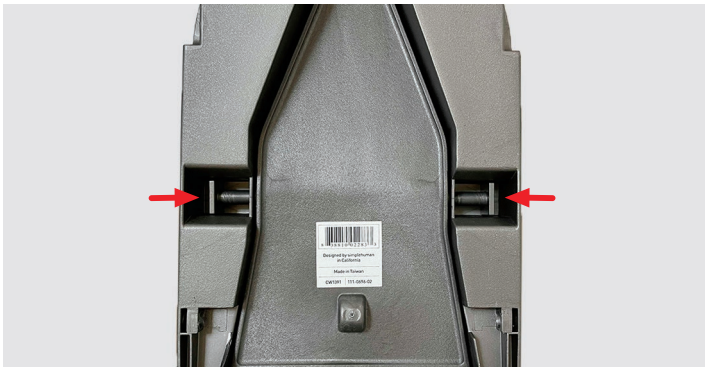
1. Place new damper into can.



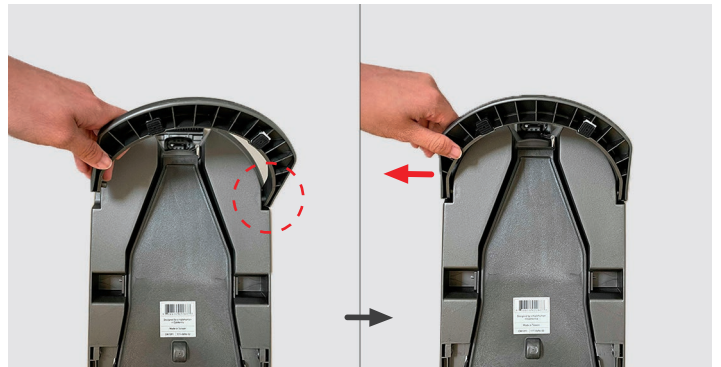
2. Place pedal and vertical rod back onto can. **Tip:** After vertical rod is fully inserted in pedal, push the pedal toward the rod a bit and push down.



3. Insert pedal pins on both sides of pedal.



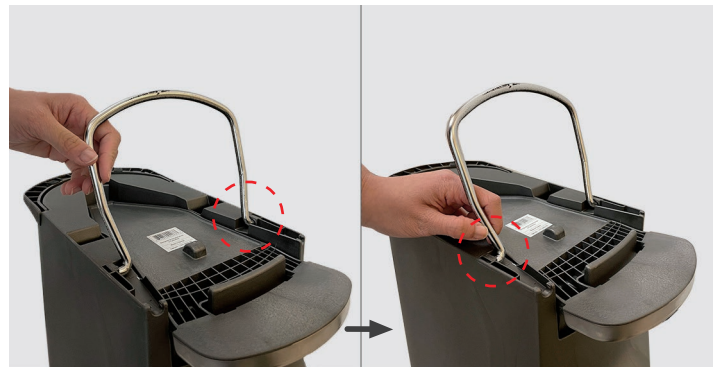
4. Insert right side of rear stabilizer into its respective slot, and gently pull on left side of rear stabilizer to secure it into other slot.



5. Push rear stabilizer down until it snaps into place.



6. Insert one side of stabilizer bar into one side and slide stabilizer bar toward connected side, then reconnect other side of bar.



7. Push stabilizer bar down until it snaps into place.



8. Turn can right-side up.



9. Lay lid onto can in the closed position. Make sure hinges on lid and can are properly aligned.



10. Hold front of can down and push down on back until both hinges snap into place.



Final Result



product questions or returns
customer.support@simplehuman.com

Section 2 slim liner rim cans

Removing Air Damper

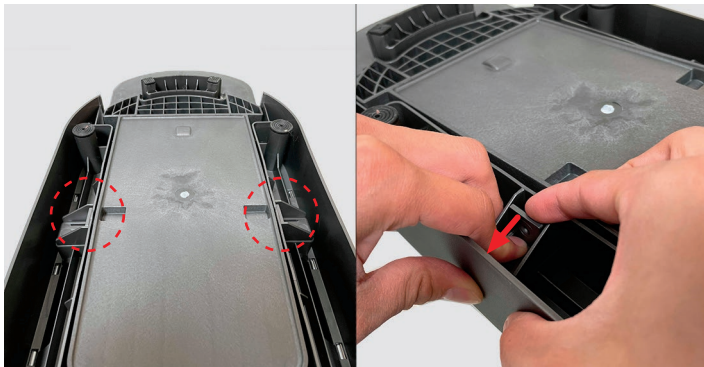
1. Open lid and liner rim and push back until it is locked into place.



2. Turn can upside down and place can onto a flat surface.



3. Remove both pedal pins by pushing tabs down on each side one at a time.



4. Lift pedal up from front of can, then slide it off vertical to remove it from the can.



5. Remove the damper.



Installing Air Damper

1. Insert new damper.



2. Place pedal and vertical rod back onto can. **Tip:** Make sure vertical rod is properly aligned with its slot near top of can.



3. Insert pins back into both sides of pedal.



4. Turn can over and close lid.



Final Result



product questions or returns
customer.support@simplehuman.com

Section 3 semi-round liner rim cans

Removing Air Damper

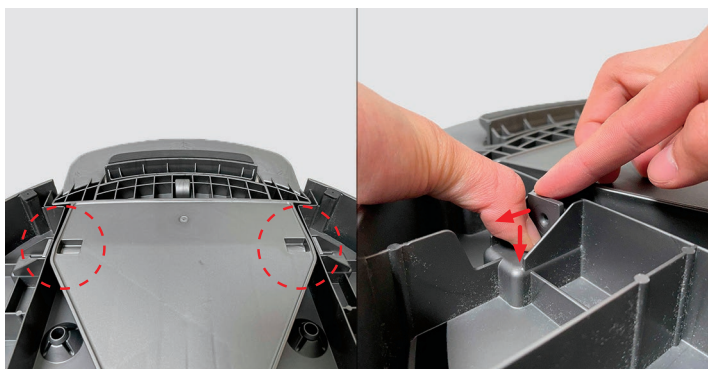
1. Open lid and liner rim and push back until it is locked into place.



2. Turn can upside down and place can onto a flat surface.



3. Remove both pedal pins by pushing tabs down on each side one at a time.



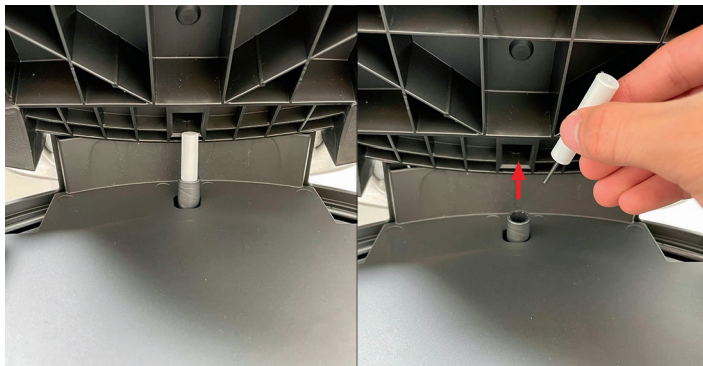
4. Push vertical rod towards pedal to lift pedal up.



5. Continue pushing rod toward pedal until pedal reaches height as shown below.

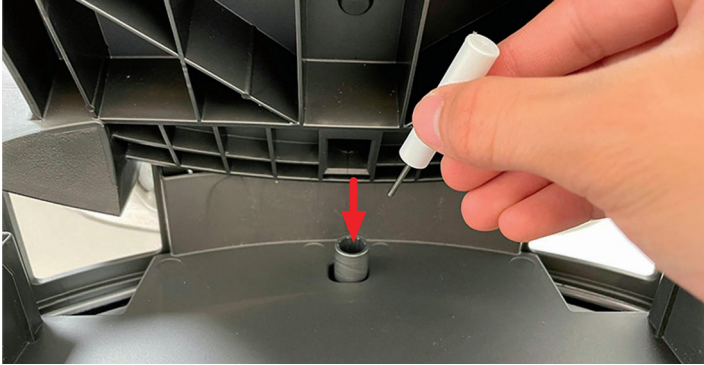


6. Lift the pedal and locate the damper to remove it.



Installing Air Damper

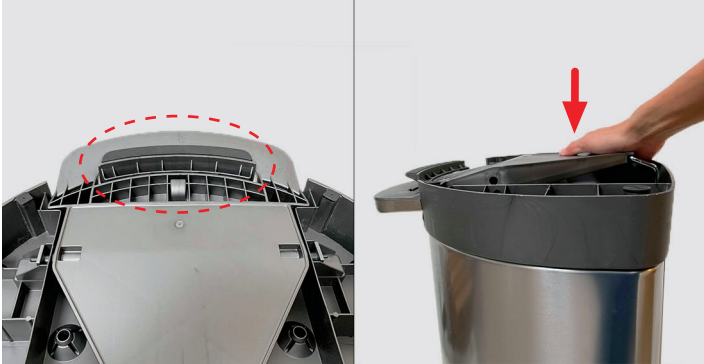
1. Insert new damper.



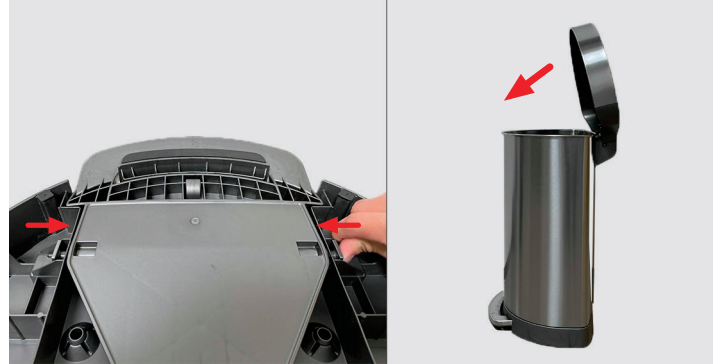
2. Pull pedal back down and ensure vertical rod is placed inside its slot.



3. Ensure the pedal is properly aligned with floor guard and push the pedal down.



4. Insert pins back into both sides of pedal. Turn can over and close lid.



Final Result



product questions or returns
customer.support@simplehuman.com

PD6216 | www.simplehuman.com | 121-0134-01