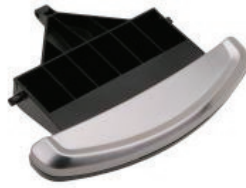


install guide

semi-round plastic can pedal replacement



Pedal assembly PD0421

for CW1355, CW1356, CW1367, and CW1358
50L semi-round plastic step can

Tools you need:

flathead screwdriver



video guide

Removal

1. Disconnect hinges. Unsnap one side at a time.



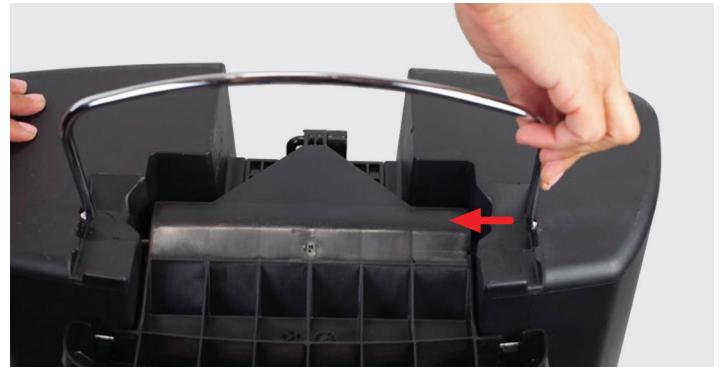
2. Remove lid from vertical rod.



3. Turn can upside down and push stabilizer bar up.



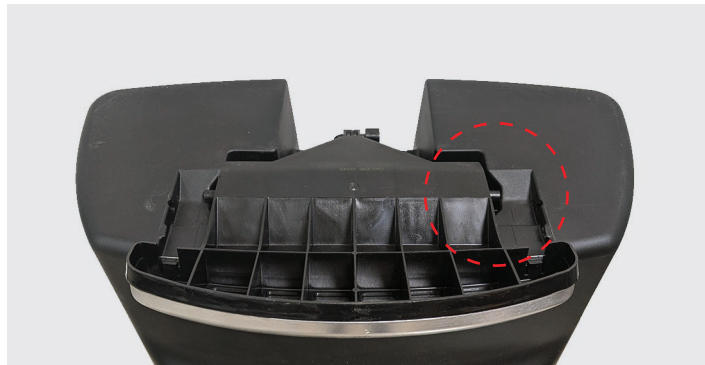
4. Push one end of stabilizer bar toward middle to remove it from can.



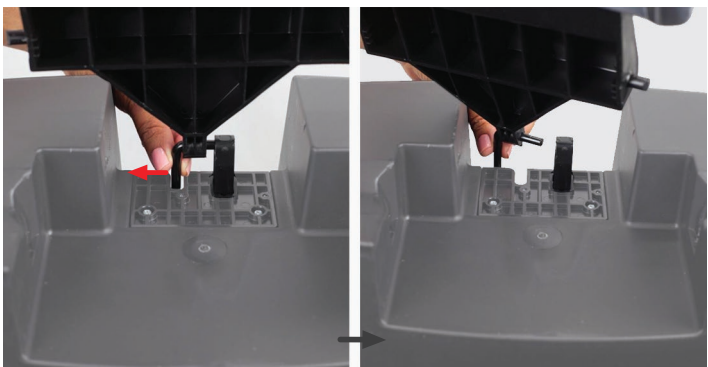
5. Insert flathead screwdriver in between left side of pedal. Carefully push down on screwdriver to pop the left side of pedal out from its socket.



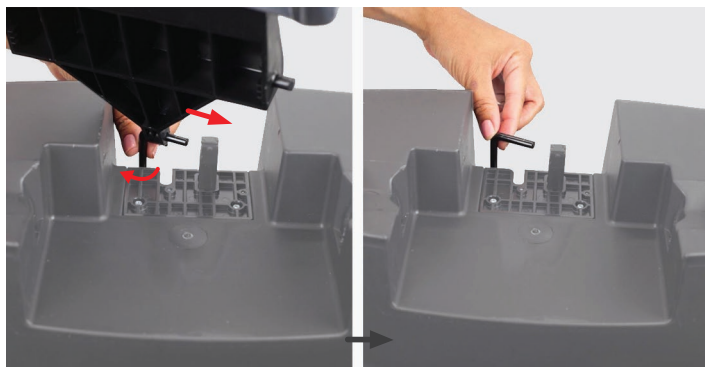
6. Remove pedal from other socket.



7. Pull rod out its groove.



8. Twist vertical rod and pull it out from pedal.

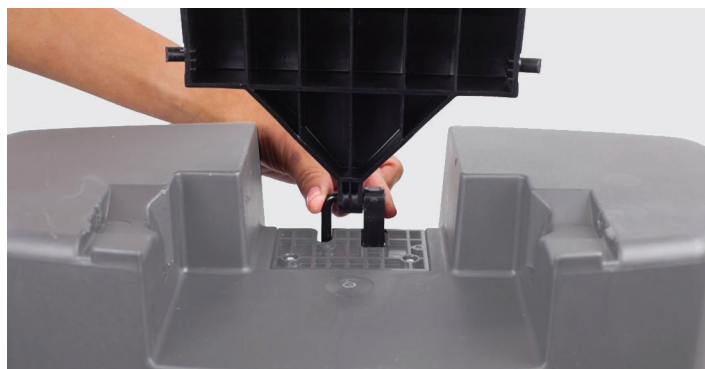


Installation

1. Insert rod into new pedal.



2. Connect rod and pedal to air damper. Push rod back into its groove.



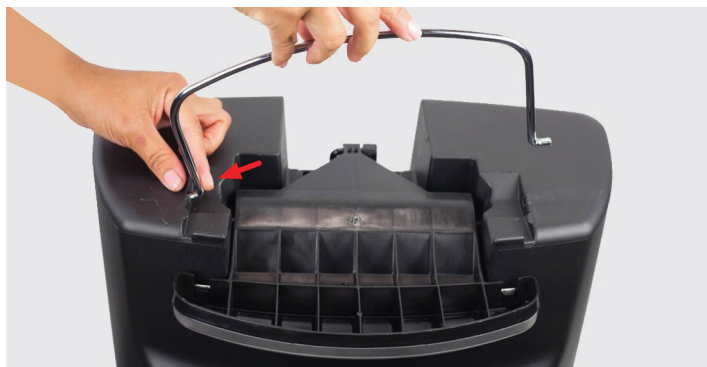
3. Push one side of pedal into one socket.



4. Push down on other side of pedal into other socket.



5. Insert one side of stabilizer bar into one side.



6. Slide stabilizer bar toward the connected side, then reconnect other side of bar.



7. Push stabilizer bar down until it snaps into place.



8. Turn can right-side up.



9. Insert vertical rod into middle portion on lid.



10. Lay lid onto can in the closed position. Make sure hinges on lid and can are properly aligned. **Tip:** Press on lock to ensure lid is secured to body of can.



11. Hold front of can down near silver lock and push down on one hinge until it snaps into place.



12. Snap other hinge into place.



Final Result



product questions or returns
customer.support@simplehuman.com