

install guide

semi-round plastic can lid replacement

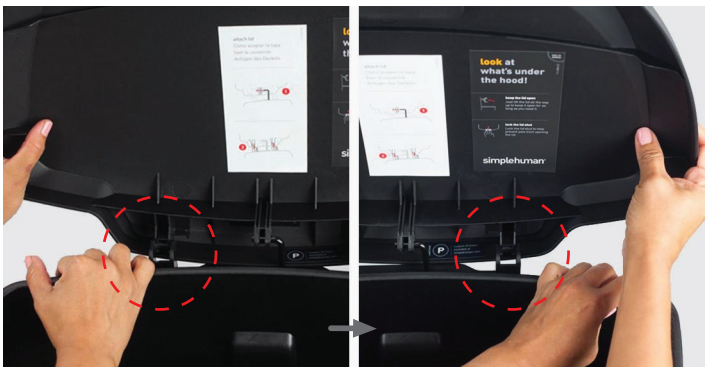


video guide

Lid assembly PD0417, PD0418, PD2001, PD2002, PD6173, PD6228
for CW1355, CW1356, CW1357, CW1358, CW1380 and CW1377
50L semi-round plastic step can

Removal

1. Disconnect hinges. Unsnap one side at a time.



2. Remove lid from vertical rod.



Installation

1. Insert vertical rod into middle portion on lid.



2. Lay lid onto can in the closed position. Make sure hinges on lid and can are properly aligned. **Tip:** Press on lock to ensure lid is secured to body of can.



3. Hold front of can down near silver lock and push down on one hinge until it snaps into place.



4. Snap other hinge into place.



Final Result



product questions or returns
customer.support@simplehuman.com