

install guide

rectangular step can leaf spring replacement



Leaf spring assembly PD0396

for rectangular step can

CW1814, CW1816, CW1830, CW1950, CW1961, CW1974

Tools you need:

-Phillips head screwdriver

Removing Leaf Spring

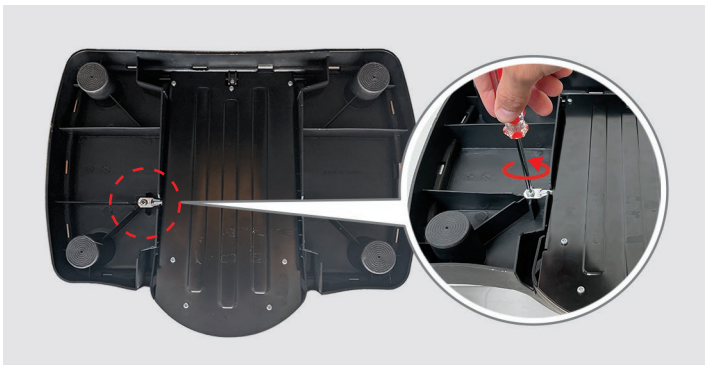
1. Open and lock lid. Remove inner bucket.



2. Turn can over and place on elevated surface with lid open.



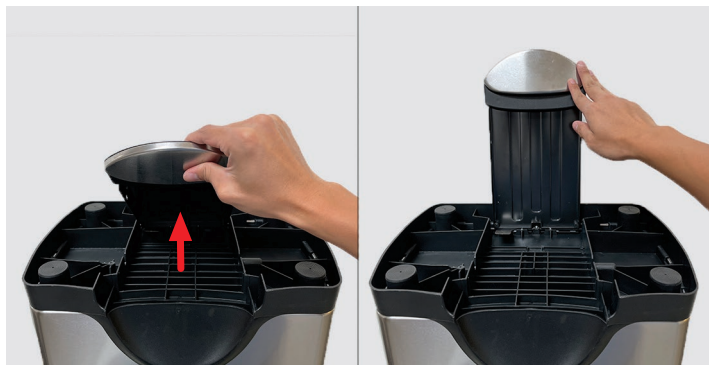
3. Use Phillips head screwdriver to remove screw on pedal rod.



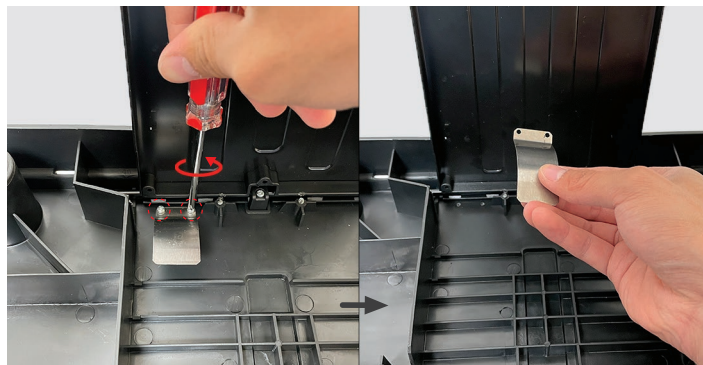
4. Pull out pedal rod.



5. Push pedal up as far back as possible.

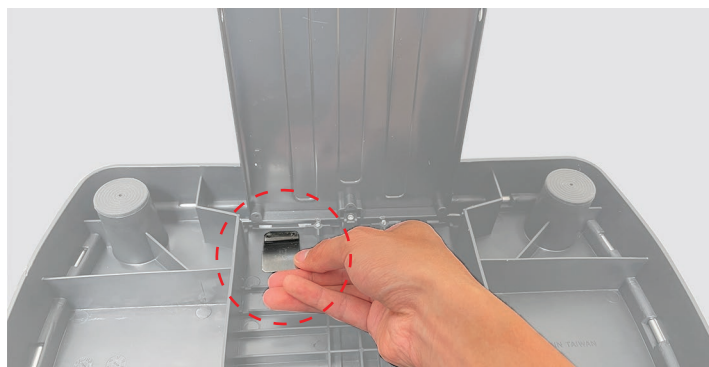


6. Use screwdriver to remove both screws securing leaf spring.

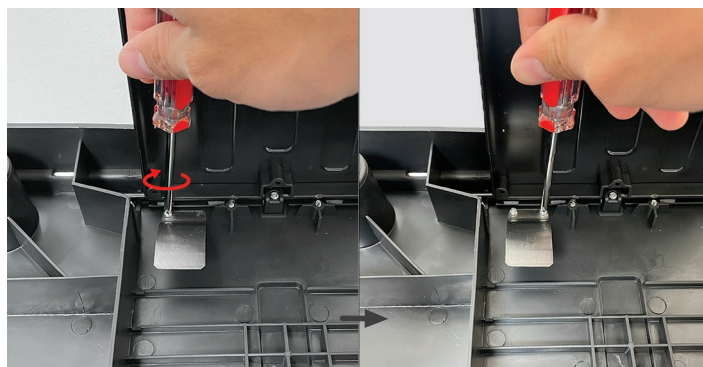


Installing Leaf Spring

1. Place new leaf spring onto can. **Tip:** Ensure screw holes on leaf springs are properly aligned with respective sections inside the can.



2. Insert screws into holes and tighten each screw with screwdriver. **Tip:** Slightly tighten each screw first to secure leaf spring, then fully tighten both screws.



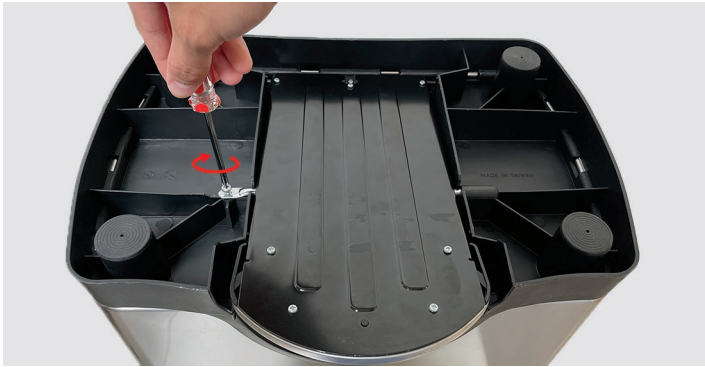
3. Pull pedal down.



4. Insert pedal rod through both holes on pedal, then push rod into its socket.



5. Insert pedal rod screw and tighten with screwdriver.



6. Turn can over.



Final Result



product questions or returns
customer.support@simplehuman.com