

# install guide

## semi-round/slim plastic can air damper replacement



### Air damper assembly PD0342

for 50L semi-round plastic step can  
CW1355, CW1357, CW1358, CW1377  
and 40L slim plastic step can  
CW1361, CW1362, CW1363, CW1381

### Tools you need:

- Phillips head screwdriver
- Flathead screwdriver

## Removal

1. Disconnect hinges. Unsnap one side at a time.



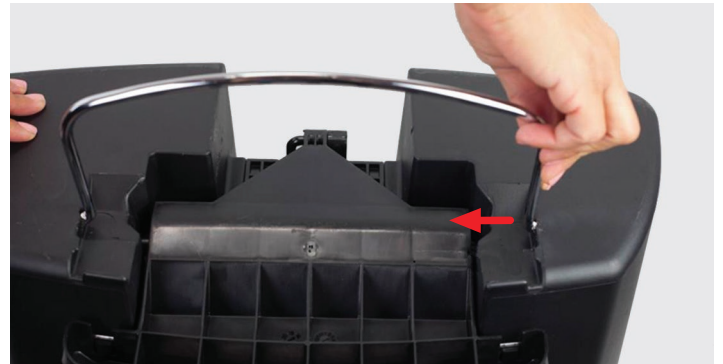
2. Remove lid from vertical rod.



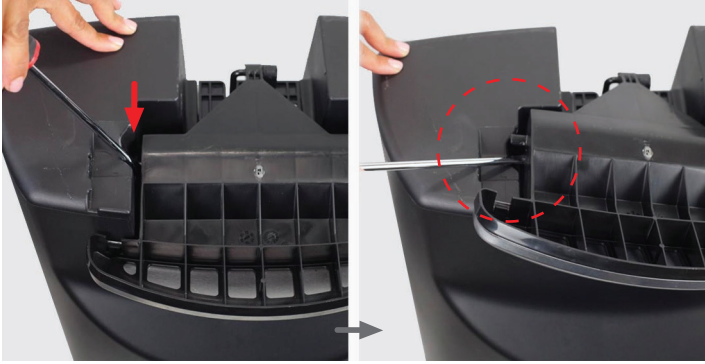
a. Turn can upside down and push stabilizer bar up. **Tip:** For 40L rectangular cans, remove screws on stabilizer bar.



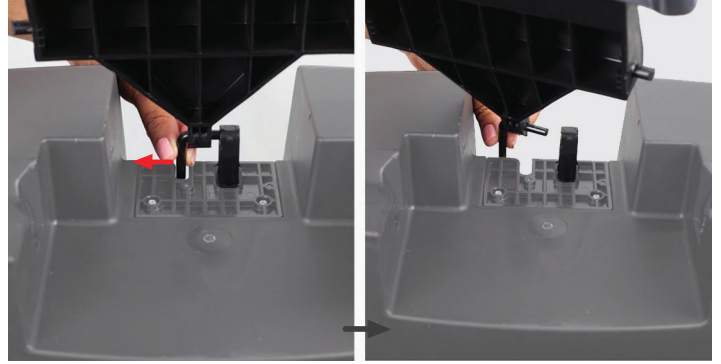
3. Push one end of stabilizer bar toward middle to remove it from can.



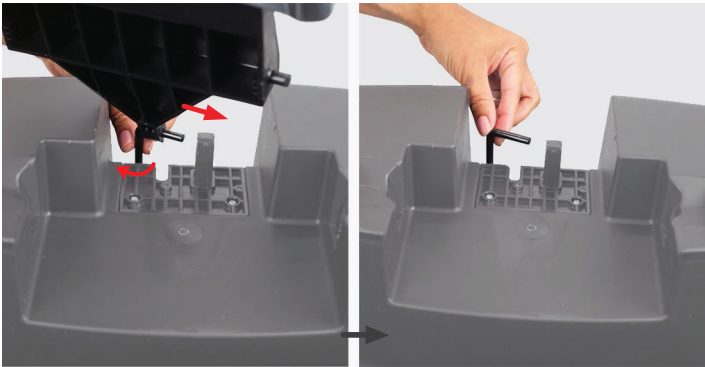
4. Insert flathead screwdriver in between left side of pedal. Carefully push down on screwdriver to pop the left side of pedal out from its socket.



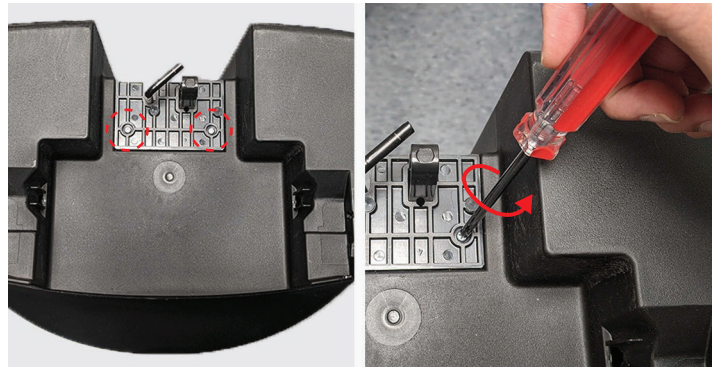
5. Pull rod out its groove.



6. Twist vertical rod and pull it out from pedal.



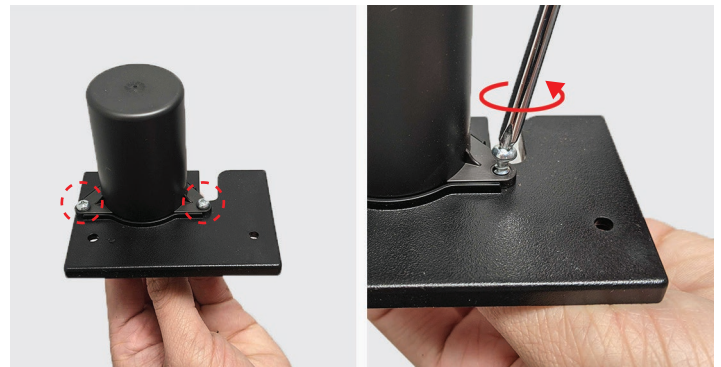
7. Use Phillips head screwdriver to remove screws on base plate.



8. Remove base plate from can.



9. Remove screws on air damper.



## Installation

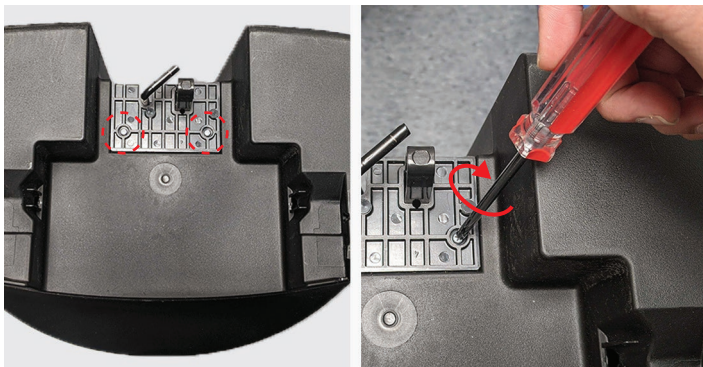
1. Remove black cover from air damper. Align the orientation of air damper parts.



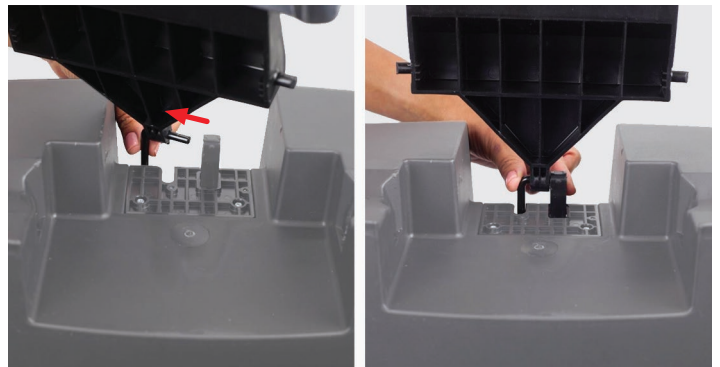
2. Insert screws into holes and tighten each screw with Phillips head screwdriver.



3. Attach base plate back onto can. Insert and tighten screws on base plate.



4. Insert rod into new pedal. Connect rod and pedal to air damper. Push rod back into its groove.



5. Push one side of pedal into one socket.



6. Push down on other side of pedal into other socket.



7. Insert one side of stabilizer bar into one side. **Tip:** For 40L rectangular cans, place stabilizer bar onto can, then fasten screws.



8. Slide stabilizer bar toward the connected side, then reconnect other side of bar.



9. Push stabilizer bar down until it snaps into place.



10. Turn can right side up and insert vertical rod into middle portion on lid.



11. Lay lid onto can in the closed position. Make sure hinges on lid and can are properly aligned. **Tip:** Press on lock to ensure lid is secured to body of can.



12. Hold front of can down near silver lock and push down on one hinge until it snaps into place.



13. Snap other hinge into place.



---

## Final Result



---

product questions or returns  
[customer.support@simplehuman.com](mailto:customer.support@simplehuman.com)