

# install guide

## Classic step can air damper replacement



### Air damper assembly

**Section 1:** for rectangular trash cans  
CW1814/CW1816/CW1830/CW1950/CW1974

**Section 2:** for butterfly trash cans  
CW1824/CW1897

### Tools you need:

-Phillips head screwdriver



video guide

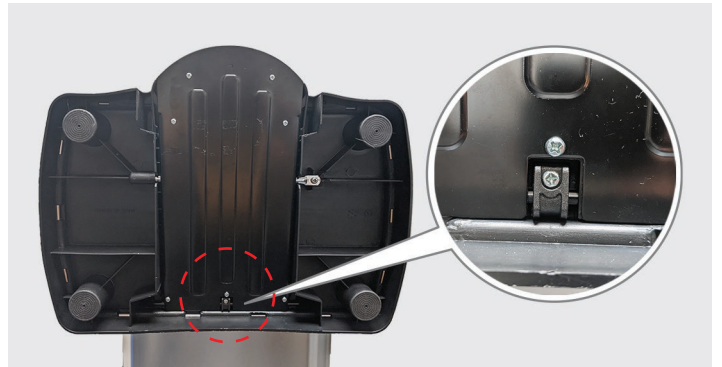
## Section 1 rectangular trash cans

### Removing Air Damper

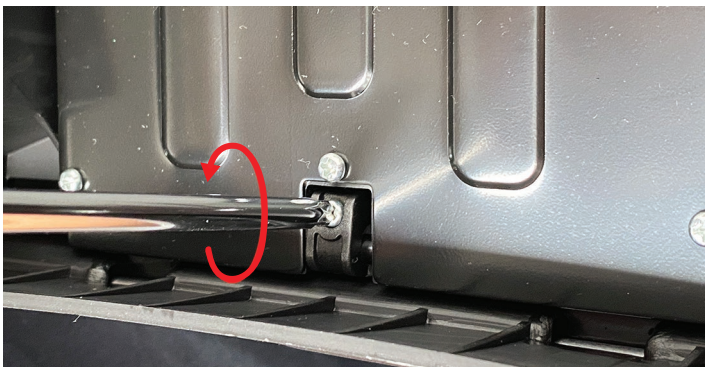
1. Open and lock lid. Remove inner bucket.



2. Lay can on its back. Locate piston screw. **Tip:** Place can on edge of a table or countertop.



3. Use Philips head screwdriver to remove piston screw.



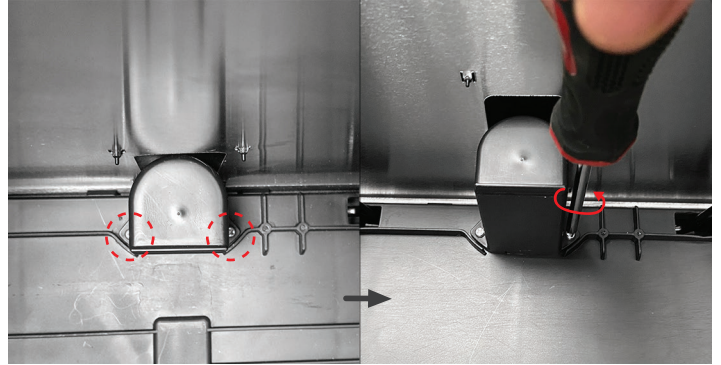
4. Remove piston screw and bracket.



5. Turn can right-side up. Locate air damper on inside of can.



6. Use screwdriver to loosen screws on each side of air damper.

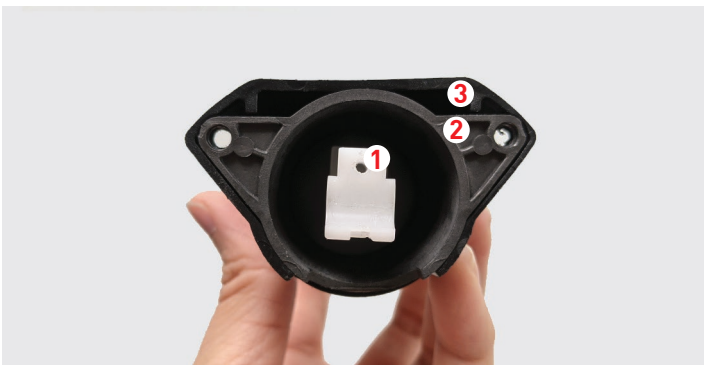


7. Remove air damper from can.



## Installing Air Damper

1. Align the orientation of air damper parts.

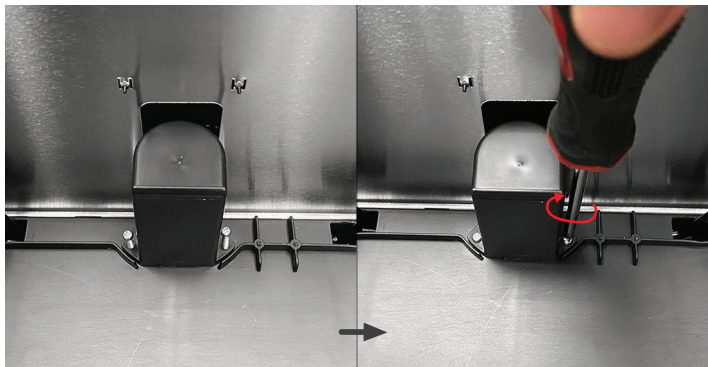


2. Place new air damper into can. **Tip:** Ensure screw holes on both the damper and inside the can are properly aligned.

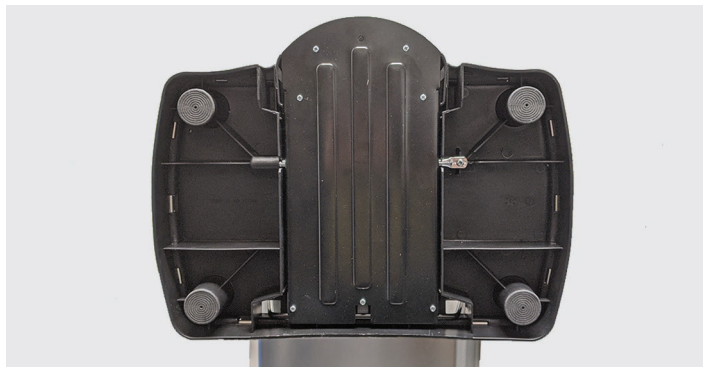




3. Insert screws into holes and tighten each screw with screwdriver. **Tip:** Slightly tighten each screw first to secure damper, then fully tighten both screws.



4. Lay can on its back.



5. Insert piston screw and bracket into their respective slot.



6. Tighten piston screw using screwdriver.



## Final Result



product questions or returns  
[customer.support@simplehuman.com](mailto:customer.support@simplehuman.com)

## Section 2 butterfly trash cans

### Removing Air Damper

1. Open can and remove inner bucket. **Tip:** Push metal rods into their respective sockets to keep the lid open.



2. Lay can on its side. Locate piston screw on bottom of can. **Tip:** Lay can on a table or countertop.



3. Use Philips head screwdriver to remove piston screw.



4. Remove piston screw and bracket.



5. Turn can right-side up. Locate air damper on inside of can.



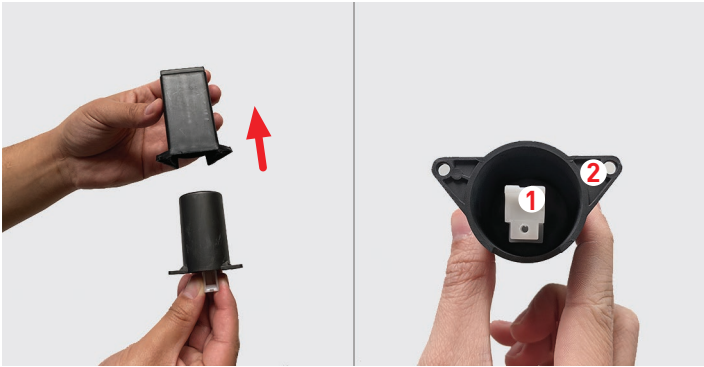
6. Use screwdriver to loosen screws on each side of air damper, and remove air damper from can.



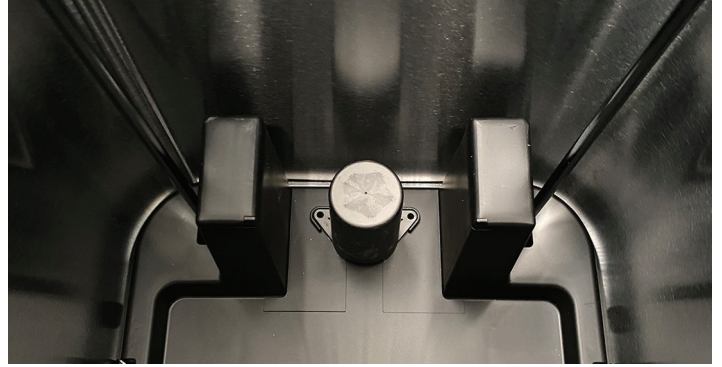


## Installing Air Damper

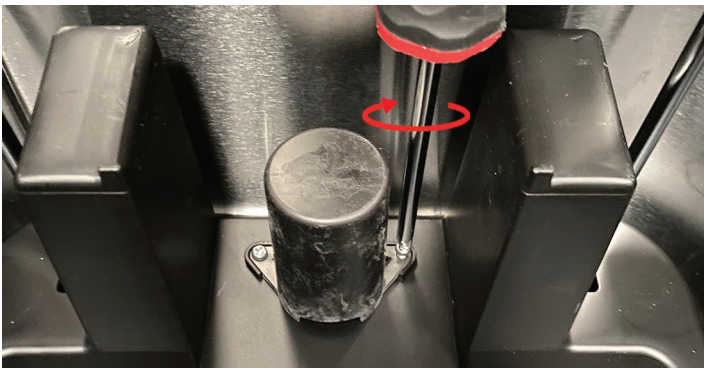
1. Remove black cover from air damper. Align the orientation of air damper parts.



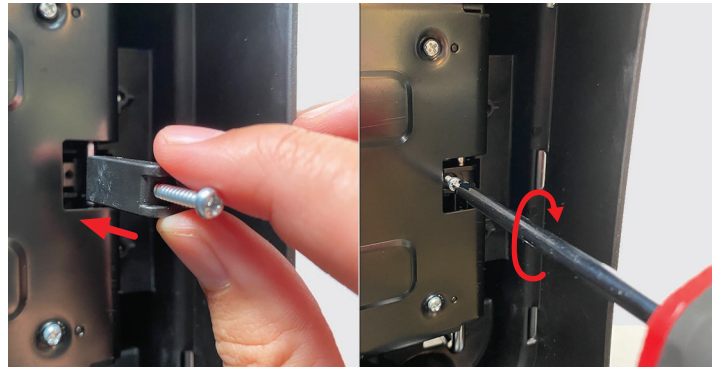
2. Place new air damper into can. **Tip:** Ensure screw holes on both the damper and inside the can are properly aligned.



3. Insert screws into holes and tighten each screw with screwdriver. **Tip:** Slightly tighten each screw first to secure damper, then fully tighten both screws.



4. Insert piston screw and bracket into their respective slot. Tighten piston screw using screwdriver.



## Final Result



product questions or returns  
[customer.support@simplehuman.com](mailto:customer.support@simplehuman.com)