

# install guide

## semi-round liner rim step can lid replacement



**Lid assembly PD6256 / PD6286**  
for CW2030 / CW2029 semi-round liner rim step can

**Tools you need:**  
-new lid assembly  
-small flathead screwdriver



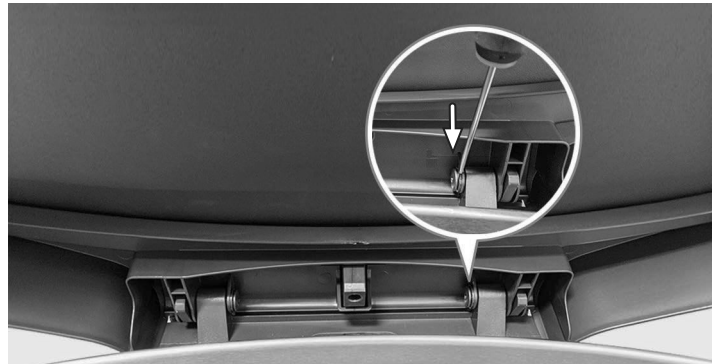
video guide

### Removing Lid

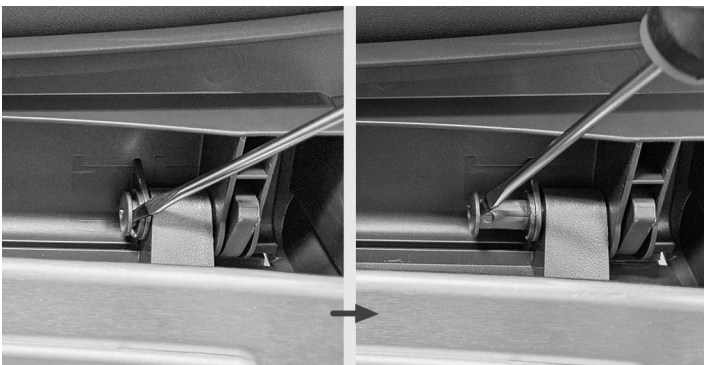
1. Open lid and liner rim and push back until it is locked into place.



2. Place screwdriver in between hinge and fastener pins.



3. Remove the two pins by sliding them towards the center with the screwdriver. **Tip:** You may need to use a bit of force when sliding the pins toward the center.



4. Firmly grasp lid assembly and pull it upward.

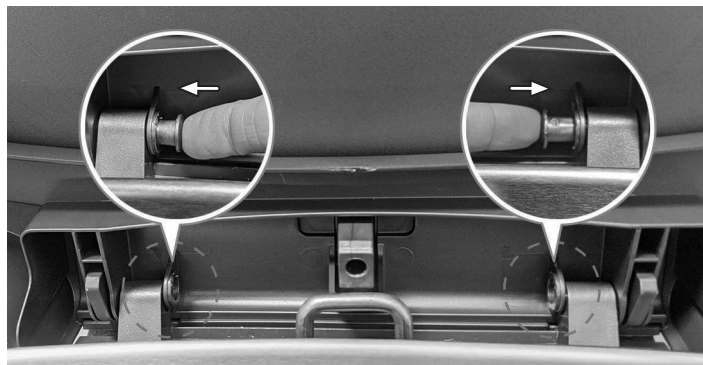


## Installing Lid

1. Place new lid assembly onto the step can in the open position.



2. Insert fastener pins back into both hinges.



3. Firmly press on each pin until it snaps. This means they are now locked into place.



---

## Final Result



---

product questions or returns  
[customer.support@simplehuman.com](mailto:customer.support@simplehuman.com)