



# AC750 Wireless Dual Band 4G LTE Router

4G LTE with Dual Band  
Wi-Fi for Home Network



Archer MR200

**4G** 4G(TDD&FDD)/3G/2G  
Compatible

 300Mbps+433Mbps  
Dual Band Wi-Fi

 LTE Antennas for  
Better Performance

# Highlights

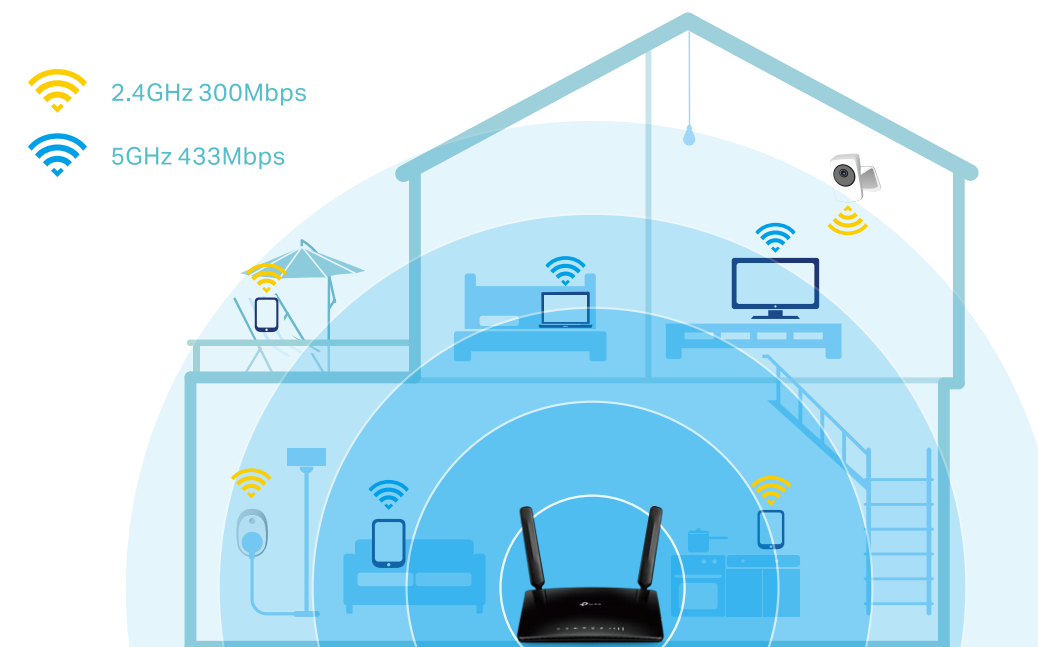
## Superfast 4G LTE Speed & Stream-Ready AC Wi-Fi

The Archer MR200 uses 4G LTE technology to achieve speeds of up to 150Mbps download and 50Mbps upload. It also shares a simultaneous dual band Wi-Fi network with maximum speeds of 300Mbps on 2.4GHz and 433Mbps on 5GHz for gaming, streaming, file-sharing and more.



## Design for Maximum Network Coverage

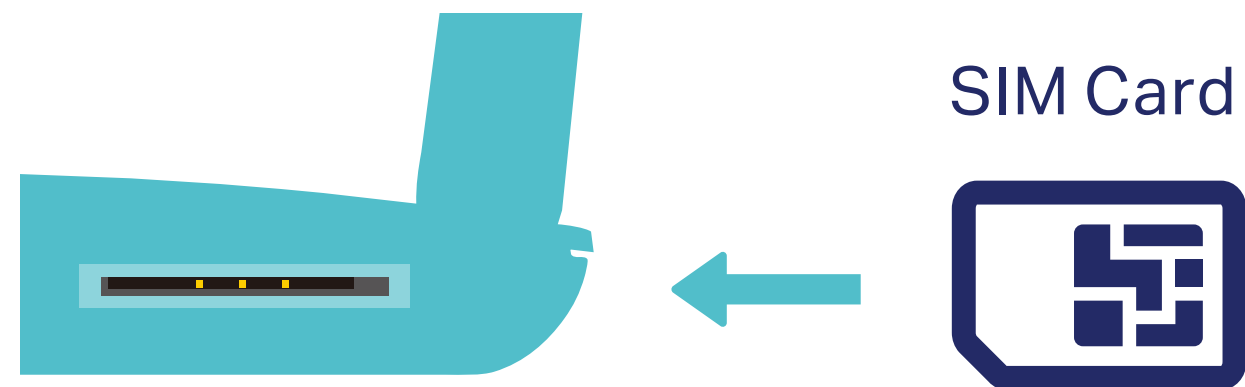
Advanced LTE antennas make efficient and stable connections to every device. Power Amplifier and Low Noise Amplifier boost sending and receiving capabilities, creating a wide-coverage Wi-Fi network for your home.



# Highlights

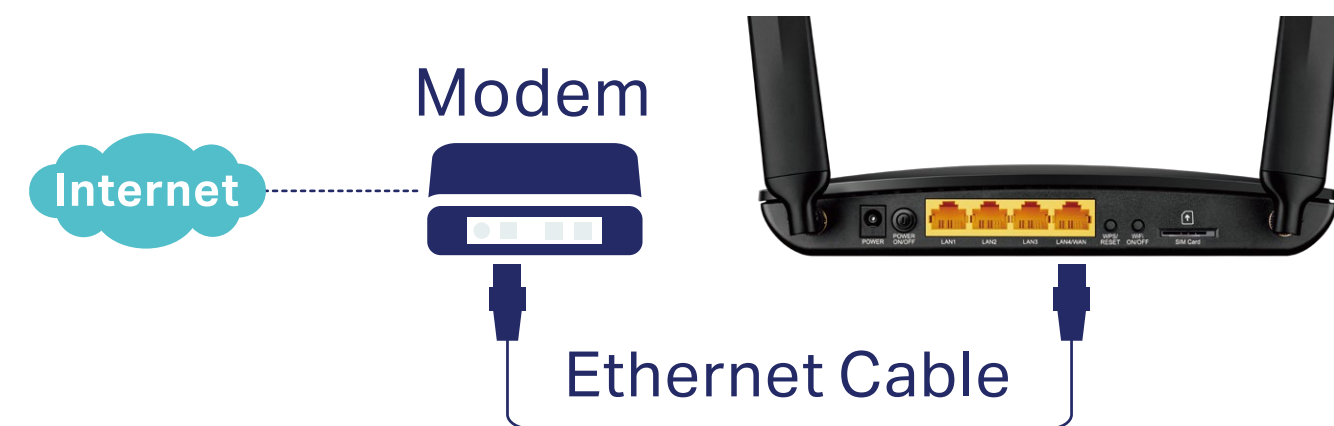
## Plug and Play

Simply insert your 3G/4G SIM card into the built-in slot, turn on the MR200 and start surfing.

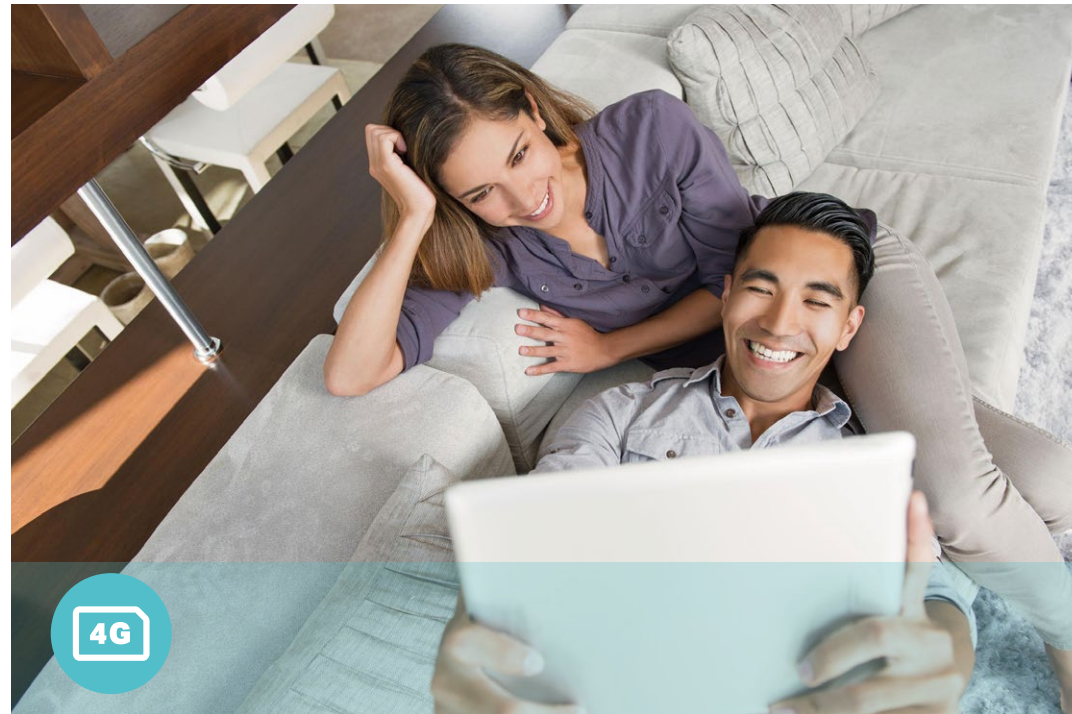


## Available WAN Connection Backup

With a fully functional WAN/LAN port, enjoy a variety of backup connection types, including cable, fiber, and DSL modems.



# Features



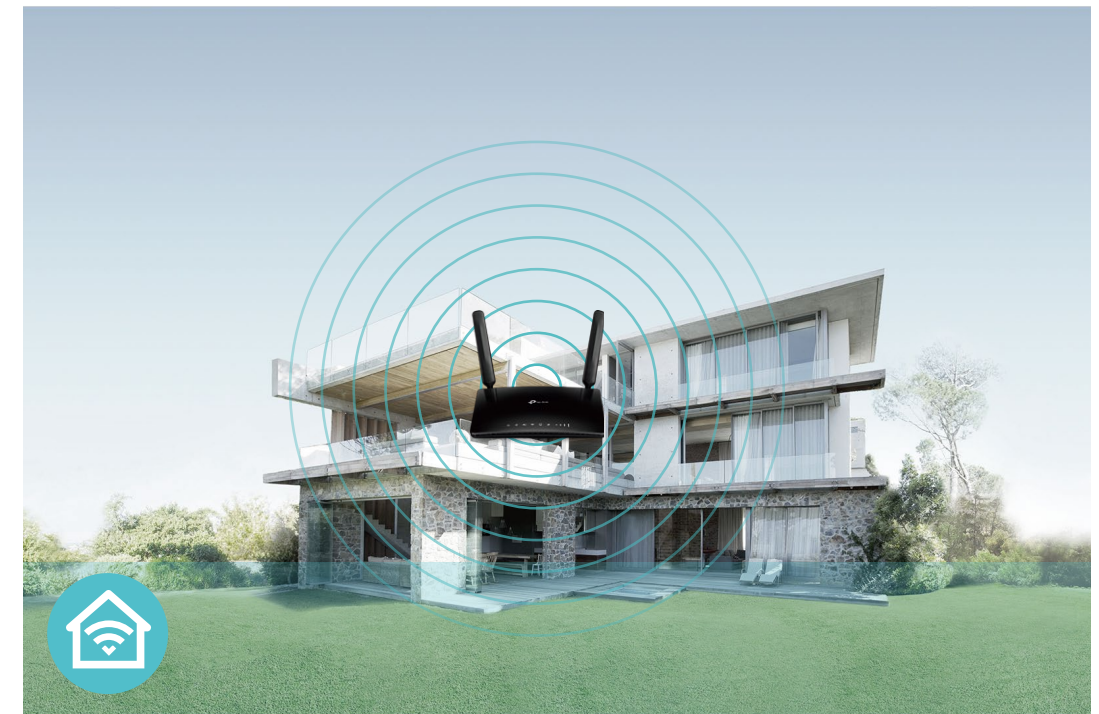
## 4G LTE

- 4G LTE – Ideal for cutting-edge 4G LTE network
- 150Mbps/50Mbps– Up to 150Mbps Download speed and 50Mbps upload speed
- Backward Compatible – Compatible with 4G/3G/2G network



## Wi-Fi Speed

- Superior Wireless Speed – Combined wireless speeds up to 300Mbps over 2.4GHz, and 433Mbps over 5GHz
- 802.11 ac Standard– Provides a data transfer rate 3 times faster than 802.11n for each stream



## Wi-Fi Range

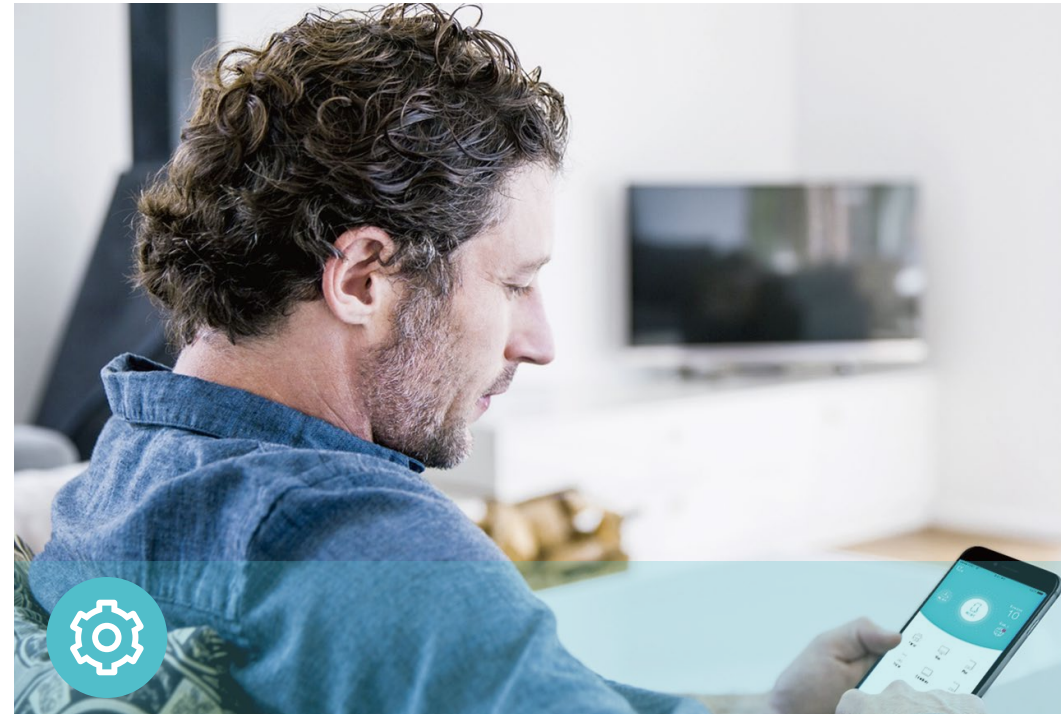
- Great Coverage – Powerful, integrated antennas provide stable wireless connections and better coverage

# Features



## Reliability

- **Simultaneous Dual Band** – Separate Wi-Fi bands enable more devices to connect to your network without a drop in performance
- **Easy Bandwidth Management** – Advanced QoS makes it easier for you to manage the bandwidth of connected devices



## Ease of Use

- **Intuitive Web UI** – Ensures quick and simple installation without hassle
- **Fast Encryption** – One-touch WPA wireless security encryption with the WPS button
- **Wi-Fi On/Off** – Conveniently turn on or off wireless radios as required
- **Hassle-free Management with Tether App** – Network management is made easy with the TP-Link Tether App, available on any Android and iOS device
- **Online Upgrade** – Keeps you informed of the latest firmware and allows online upgrade on the web UI



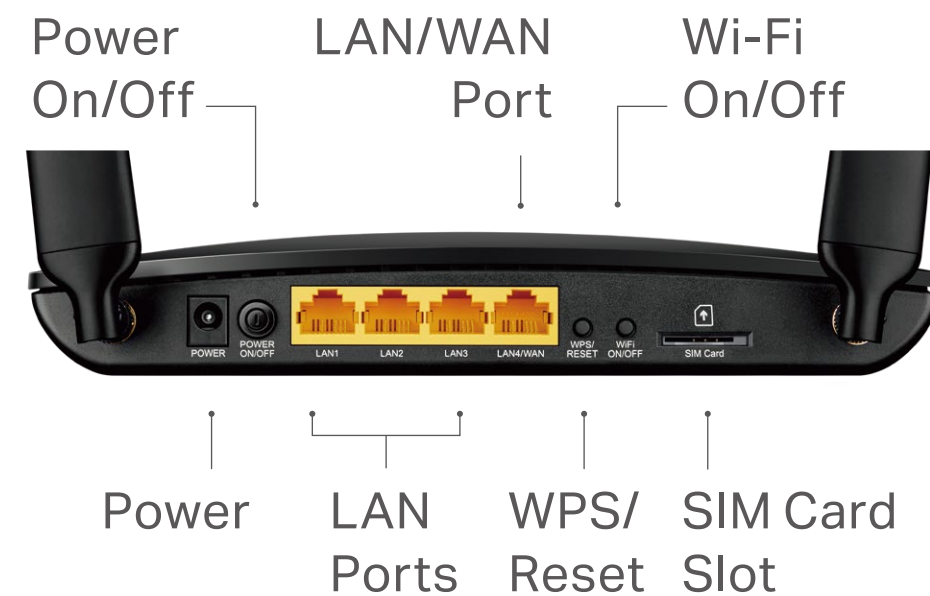
## Security

- **Guest Network** – Keeps your main network secure by creating a separate network for friends and visitors
- **Access Control** – Establishes a whitelist or blacklist to allow or restrict certain devices to access the internet
- **Parental Controls** – Restrict internet access time and contents for children devices
- **Encryptions for Secure Network** – WPA-PSK and WPA2-PSK encryptions provide active protection against security threats

# Specifications

## Hardware

- Interface: 3 10/100Mbps LAN Ports, 1 10/100Mbps LAN/WAN Port, 1 SIM Card Slot
- Buttons: Wi-Fi On/Off Button, WPS/Reset Button, Power On/Off Button
- Antennas: 3 Internal Wi-Fi Antennas, 2 Detachable External 4G LTE Antennas
- External Power Supply: 12V/1A
- Dimensions (W x D x H): 7.95 × 5.55 × 1.32 in. (202 × 141 × 33.6 mm)



## Wireless

- Network Type
  - 4G: FDD-LTE Cat4 (800/900/1800/2100/2600MHz), TDD-LTE (1900/2300/2500/2600MHz)
  - 3G: DC-HSPA+/HSPA+/HSPA/UMTS (900/2100MHz)
  - 2G: EDGE/GPRS/GSM (850/900/1800/1900MHz)
- Wireless Standards: IEEE 802.11ac/n/a 5GHz, IEEE 802.11b/g/n 2.4GHz
- Frequency: 2.4GHz and 5GHz
- Signal Rate: 300Mbps at 2.4GHz, 433Mbps at 5GHz
- Transmit Power:
  - CE: <20dBm(2.4GHz), <23dBm(5GHz);
- Reception Sensitivity:
  - 5GHz:
    - 11a 54M: -74dBm
    - 11ac HT20: -67dBm
    - 11ac HT40: -64dBm
    - 11ac HT80: -60dBm
    - 11n HT20: -71dBm
    - 11n HT40: -70dBm
  - 2.4GHz:
    - 11g 54M: -76dBm
    - 11n HT20: -73dBm
    - 11n HT40: -67dBm
- Wireless Function: Enable/Disable Wireless Radio, WDS Bridge, WMM, Wireless Statistics
- Wireless Security: 64/128-bit WEP, WPA/WPA2, WPA-PSK/WPA2-PSK encryptions

# Specifications

## Software

- Quality of Service: Traffic Control (IP QoS)
- Operating Modes: 3G/4G Router, Wireless Router
- WAN Type: Dynamic IP/Static IP/PPPoE/PPTP(Dual Access)/L2TP(Dual Access)/BigPond
- Management: Access Control, Local Management, Remote Management
- DHCP: Server, DHCP Client List, Address Reservation
- Port Forwarding: Virtual Server, Port Triggering, UPnP, DMZ
- Dynamic DNS: DynDns, NO-IP
- Access Control: Parental Controls, Local Management Control, Host List, Access Control
- Firewall Security: DoS, SPI Firewall, IP and MAC Address Binding
- Protocols: IPv4, IPv6
- Guest Network: 2.4GHz guest network x 1, 5GHz guest network x 1

## Others

- Certification:  
CE, FCC, RoHS
- System Requirements:  
Microsoft Windows 98SE/NT/2000/XP/Vista™/7/8/8.1/10, MAC OS, NetWare, UNIX or Linux  
Internet Explorer 11, Firefox 12.0, Chrome 20.0, Safari 4.0, or other Java-enabled browser  
SIM Card
- Environment:  
Operating Temperature: 0°C~40°C (32°F ~104°F)  
Storage Temperature: -40°C~70°C (-40°F ~158°F)  
Operating Humidity: 10%~90% non-condensing  
Storage Humidity: 5%~90% non-condensing
- Package Contents  
AC750 Wireless Dual Band 4G LTE Router Archer MR200  
Power Adapter  
Ethernet Cable  
Quick Installation Guide  
Micro to Standard SIM Card Adapter  
Nano to Standard SIM Card Adapter



For more information, please visit

<http://www.tp-link.com/en/products/details/Archer-MR200.html>

or scan the QR code left

Specifications are subject to change without notice. TP-Link is a registered trademark of TP-Link Technologies CO., Ltd. Other brands and product names are trademarks or registered trademarks of their respective holders. Copyright © 2018 TP-Link Technologies Co., Ltd. All rights reserved.

\* Attention: This device may only be used indoors in all EU member states and EFTA countries.

\* Maximum wireless speed of up to 750Mbps is the theoretical data rate derived from IEEE standard 802.11 specifications. Actual data throughput and wireless coverage will vary due to network conditions and environmental factors including volume of network traffic, building materials and construction, network overhead, actual data throughput rate, and wireless coverage. TP-Link makes no express or implied representations or warranties about this product's compatibility with any future standards.

[www.tp-link.com](http://www.tp-link.com)

TP-Link AC750 Dual Band 4G LTE Router Archer MR200