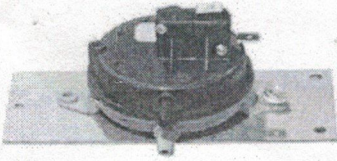


# Vacuum Switch Installation Instructions



**PART NUMBER**  
KS-5090-1300  
KS-5090-1310



### Parts Included

- 1 vacuum switch
- 1 mounting plate

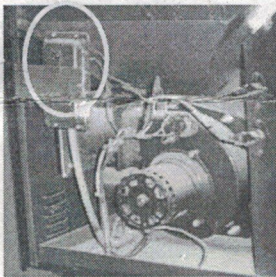
### Recommended Tools:

- 1/4" Hex nut setter & driver
- 1/4" Drill Bit & drill

**NOTE: Always Disconnect Power Before Performing Service Work**

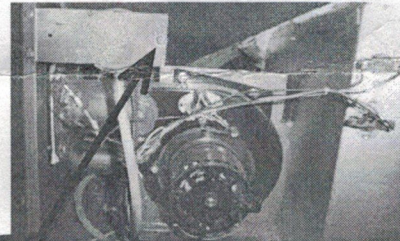
1. Disconnect the power supply to the stove and remove side panel.
2. Find the picture below that shows the vacuum switch that is currently in your stove and follow the instructions that go along with it. A, B, or C

A

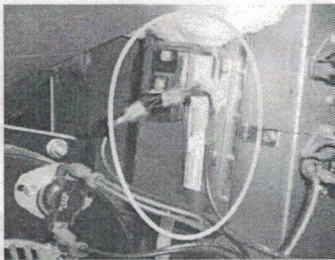


#### Instructions:

1. Remove hose and wires from old switch.
2. Remove screws from old vacuum switch
3. Separate the new vacuum switch from the mounting plate that comes with it
4. Attach hose to the GREY PORT on the new vacuum switch
5. Attach wires to new vacuum switch
6. Mount new switch onto metal plate as shown in the picture to the right (only one screw is necessary )

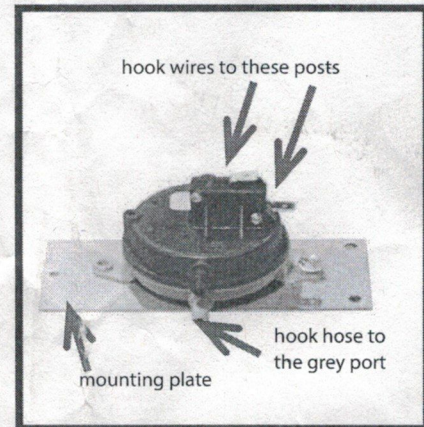


B



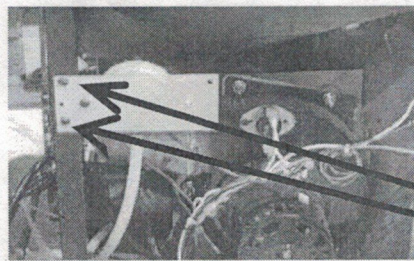
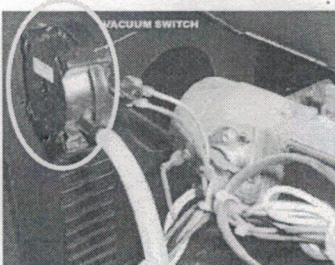
#### Instructions:

1. Remove hose and wires from old switch.
2. Remove screws
3. Drill 2 holes on back corner of stove to mount new switch and mounting plate.
4. Attach hose to the GREY PORT on the new vacuum switch
5. Attach wires to new vacuum switch
6. Mount new vacuum switch with metal plate onto stove as shown in the picture below



OR

C



holes need to be drilled here before plate can be mounted