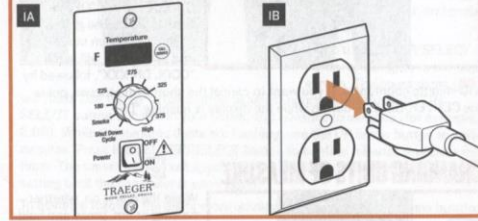
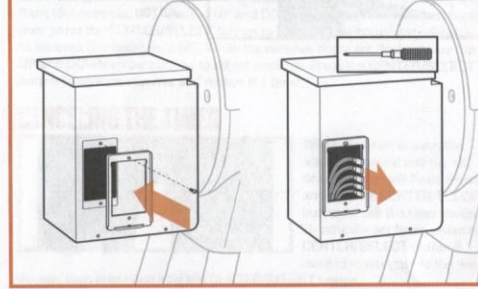


INSTALLING YOUR ARC CONTROL

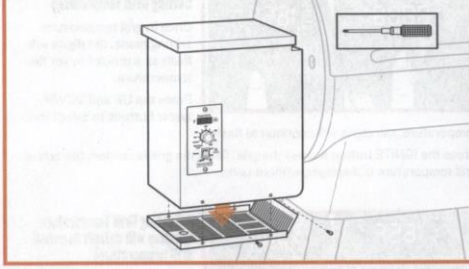
1 TURN POWER OFF (O) / DISCONNECT POWER CORD



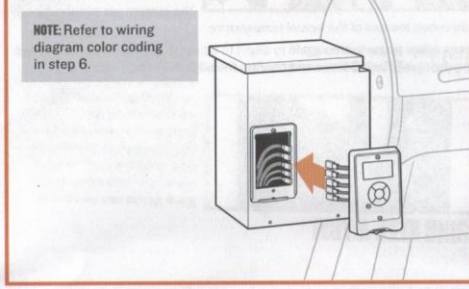
4 INSTALL TOP SCREW IN PLATE / THREAD CABLES



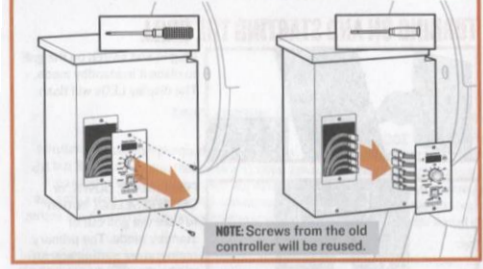
2 REMOVE BOTTOM HOPPER COVER (IF INSTALLED)



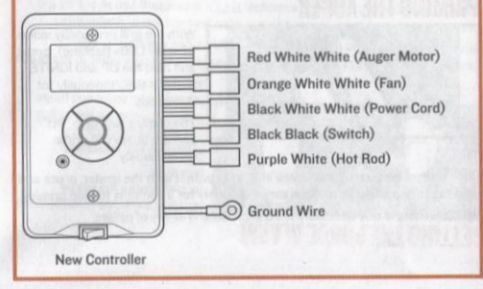
5 CONNECT CABLES TO NEW CONTROLLER



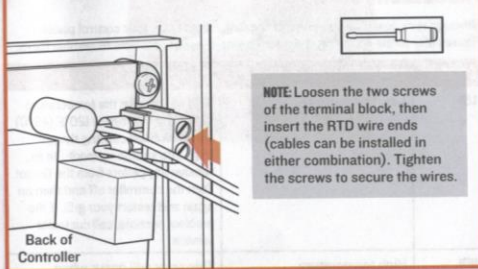
3 REMOVE CURRENT CONTROLLER / DISCONNECT CABLES



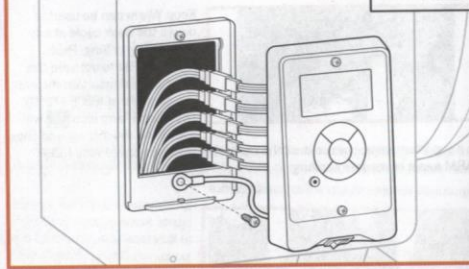
6 CABLE DIAGRAM



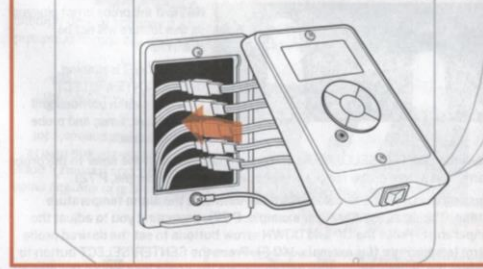
7 CONNECT RTD WIRES



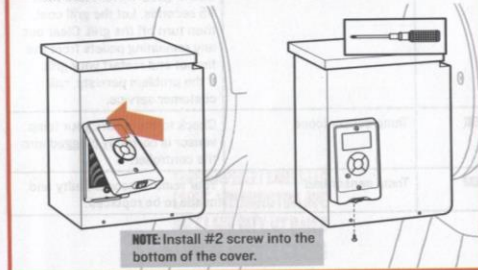
8 CONNECT GROUND SCREW



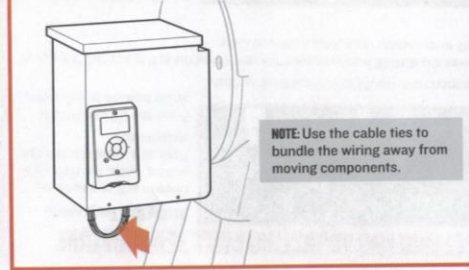
9 FEED CABLES INTO HOPPER



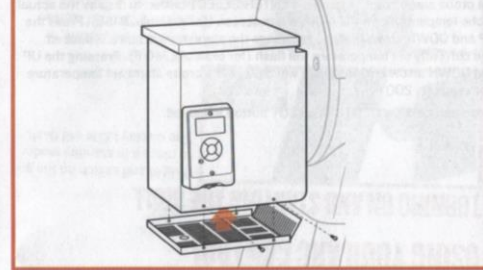
10 HOOK TOP OF CONTROLLER ONTO PLATE / SNAP BOTTOM



11 INSTALL CABLE TIES



12 REATTACH HOPPER BOTTOM COVER (IF REMOVED)



USING YOUR ARC CONTROL

TURNING ON AND STARTING THE GRILL



Plug in and switch on the grill to place it in standby mode. The display LEDs will flash.



Press the UP, DOWN, or CENTER/SELECT button to take the grill out of standby mode. The primary temperature setting screen will be displayed.

PRIMING THE AUGER



With the grill in standby mode (display LEDs flashing), press and hold the UP and IGNITE buttons simultaneously for 3 seconds.

The display will flash "Pri" and the auger will prime continuously.

Once a small amount of pellets are in direct contact with the igniter, press and hold the UP and IGNITE buttons simultaneously for 3 seconds to stop priming.

NOTE: Priming is only necessary if the auger tube is empty of pellets.

SETTING AND ADJUSTING GRILL TEMPERATURE



Setting Grill Temperature

Once in grill temperature setting mode, the digits will flash as a prompt to set the temperature.

Press the UP and DOWN arrow buttons to select the

temperature; the digits will continue to flash.

Press the IGNITE button to start the grill. Once the grill is started, the actual grill temperature is displayed without units.



Adjusting Grill Temperature (display will default to actual grill temperature)

When the grill is running and in grill temperature mode, press either arrow button to display the current set temperature in

Fahrenheit instead of the actual temperature.

Press either arrow button again to begin to adjust the temperature as needed. The digits will flash 3 times and confirm the adjusted temperature.

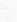
SETTING THE PROBE ALARM



NOTE: If the probe is not plugged in, this feature will not be available.

When the grill is running, use the CENTER/SELECT button to switch between grill temperature, timer, and probe alarm screens.

Press the CENTER/SELECT button twice to navigate past the timer to the probe alarm. The actual probe temperature is displayed (for example, P 72).


Pressing the UP or DOWN arrow buttons activates the alarm temperature setting. The digits will flash (for example, P 72), prompting you to adjust the temperature. Press the UP and DOWN arrow buttons to set the desired probe alarm temperature (for example, 140 F). Press the CENTER/SELECT button to confirm the alarm temperature and illuminate the probe icon  on the display. The display will show the current probe temperature until the controller is used again.

If a probe alarm is set, press the CENTER/SELECT button to display the actual probe temperature on the probe alarm screen (for example, P 155). Press the UP and DOWN arrow buttons to change the alarm temperature, if desired. The currently set temperature will flash (for example, 140 F). Pressing the UP and DOWN arrow buttons again will change the probe alarm set temperature (for example, 200 F).

Press and hold the CENTER/SELECT button to cancel.

USING KEEP WARM



Keep Warm can be used to pause the cook cycle at any time during grilling. Press KEEP WARM to activate the function and maintain the grill temperature at 165°F (75°C). The Keep Warm icon  will appear on the display and show

the Keep Warm temperature until the controller is used again. Press KEEP WARM again to resume cooking.

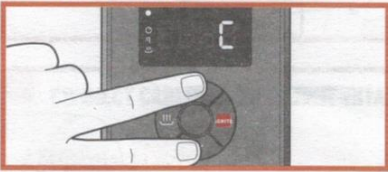
SHUTTING DOWN THE GRILL



When the grill is running and in grill temperature mode, press and hold the CENTER/SELECT button. "OFF" will flash 9 times. The grill will go into shutdown mode and the display will scroll "COOL DN XXX", followed by

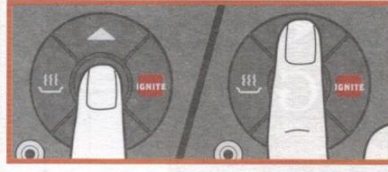
a 10-minute countdown. If you want to cancel the shutdown process, press the CENTER/SELECT button while the display is flashing "OFF."

CHANGING UNITS OF MEASURE



While the grill is on, whether running or not, press and hold the UP arrow and DOWN arrow buttons simultaneously for 3 seconds to change between °F and °C.

SETTING THE TIMER



When the grill is running, use the CENTER/SELECT button to switch between grill temperature, timer, and probe alarm screens.

Press the CENTER/SELECT button to navigate to the timer screen. The hours digits (00:) will flash.

Use the UP arrow button to select hours, press the CENTER/SELECT button to confirm your hours, and advance to minutes (for example, 2:00). While the minutes digits are flashing, use the UP arrow button to select minutes. Press the CENTER/SELECT button to confirm minutes and start the timer. The timer icon will appear on the display and show the current timer setting until the controller is used again.

To advance through the digits more quickly, press and hold the arrow buttons.

If the timer is set, press the CENTER/SELECT button to display the time remaining on the timer screen (for example, 1:46).

Press the UP or DOWN arrow buttons to change the set time. Hour digits will flash (for example, 01:). Use the UP and DOWN arrow buttons to adjust hours; then press the CENTER/SELECT button to confirm your hours and advance to minutes (for example, 1:46). While the minutes digits are flashing, use the UP and DOWN arrow buttons to adjust minutes. Press the CENTER/SELECT button to confirm minutes and restart the timer.

CANCELING THE TIMER



When the timer is over, the alarm will sound and the set time and icon will flash. Press and hold the CENTER/SELECT button to exit the timer mode. To cancel a set timer, press the CENTER/SELECT button if needed to navigate to the timer screen; then press and hold the CENTER/SELECT button.

TROUBLESHOOTING

Although rare, you may see an error message display on your control panel. Please refer to the following chart for potential issues and how to resolve them:

| CODE | ERROR | SOLUTION |
|------|-------------------|---|
| LER | Low temperature | This will occur if the temperature of the grill falls below 120°F (49°C) for 10 minutes, causing the grill to go into shutdown mode. To fix, remove any pellets from the firepot. Turn the controller off and then on again and restart your grill. If the problem persists, call customer service. |
| HER | High temperature | This error will occur when the temperature in the grill reaches temperatures above 550°F (288°C) for more than 45 seconds. Let the grill cool, then turn off the grill. Clear out any remaining pellets from the firepot and restart your grill. If the problem persists, call customer service. |
| ERI | Temp sensor loose | Check to make sure your temp sensor is correctly plugged into the controller. |
| ER2 | Temp sensor bad | Your temp sensor is faulty and needs to be replaced. |



TRAEGER PELLET GRILLS LLC
1215 E. WILMINGTON AVE
SALT LAKE CITY, UT 84106
TRAEGERGRILLS.COM