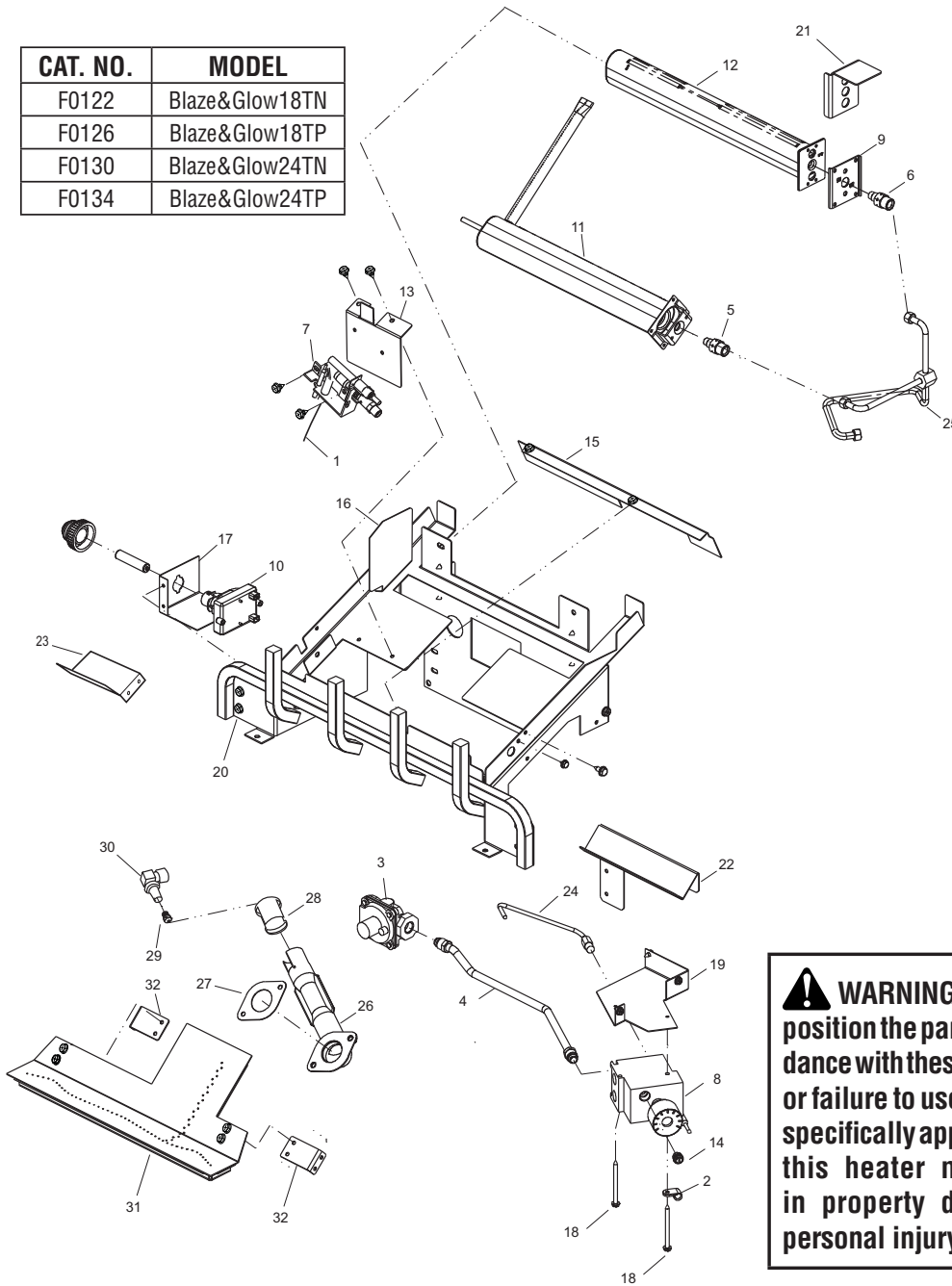


PARTS

THERMOSTATICALLY CONTROLLED MODELS

BLAZE&GLOW18TN, BLAZE&GLOW18TP, BLAZE&GLOW24TN, BLAZE&GLOW24TP

CAT. NO.	MODEL
F0122	Blaze&Glow18TN
F0126	Blaze&Glow18TP
F0130	Blaze&Glow24TN
F0134	Blaze&Glow24TP



WARNING: Failure to position the parts in accordance with these diagrams or failure to use only parts specifically approved with this heater may result in property damage or personal injury.

PARTS AVAILABLE NOT SHOWN

KEY NO.	CAT. NO.	DESCRIPTION	Blaze&Glow18TN	Blaze&Glow18PT	Blaze&Glow24TN	Blaze&Glow24TP	QTY.
	J5519	Flex Tube	•	•	•	•	1
	J3658	Warning Plate	•	•	•	•	1
	J3686	Lighting Instruction Plate	•	•	•	•	1
	J3664	Caution Decal	•	•	•	•	1
	J3689	Hardware Kit	•	•	•	•	1
	80L42	Volcanic Stone	•	•	•	•	1
	J6504	Left Ember Chunk #1			•	•	1
	J6505	Middle Ember Chunk #2			•	•	1
	J6506	Right Ember Chunk #3			•	•	1
	J6208	Glowing Embers (rockwool)	•	•	•	•	1
	J6207	Platinum Embers	•	•	•	•	1

PARTS

THERMOSTATICALLY CONTROLLED MODELS

This list contains replaceable parts used in your heater. When ordering parts, follow the instructions listed under *Replacement Parts* on **Page 40** of this manual.

KEY NO.	CAT. NO.	DESCRIPTION	Blaze&Glow18TN	Blaze&Glow18TP	Blaze&Glow24TN	Blaze&Glow24TP	QTY.
1	J3571	Cable Igniter	•	•	•	•	1
2	J3593	Thermobulb Clip	•	•	•	•	1
3	J3594	Gas Regulator	•		•		1
	J3595	Gas Regulator		•		•	1
4	F3339	Inlet Tube	•	•			1
	F3340	Inlet Tube			•	•	1
5	J3672	Front Orifice, (0.0530) 1.35mm		•		•	1
	J3680	Front Orifice, (0.0890) #43			•		1
6	J3674	Rear Orifice, (0.0400) #60		•			1
	J3675	Rear Orifice, (0.0453) 1.55mm				•	1
	J3678	Rear Orifice, (0.0720) 1.83mm			•		1
	J3676	Rear Orifice, (0.0670) 1.70mm	• (2 ea.)				1
7	J5527	Pilot, ODS LP		•		•	1
	J5530	Pilot, ODS NG	•		•		1
8	F3323	Gas Valve Service Kit	•				1
	F3324	Gas Valve Service Kit		•			1
	F3325	Gas Valve Service Kit			•		1
	F3326	Gas Valve Service Kit				•	1
9	**	Plate, NG Conversion	•		•		1
10	J4596	Electronic Igniter	•	•	•	•	1
11	J4818	Front Ramp Burner	•	•			1
	J4819	Front Ramp Burner			•	•	1
12	J4923	Rear Ramp Burner	•	•			1
	J4924	Rear Ramp Burner			•	•	1
13	J4842	Pilot Bracket	•		•		1
	J4843	Pilot Bracket		•		•	1
14	**	Min. Rate Screw	•	•	•	•	1
15	RP125489-01	Air Deflector Bracket	•	•			1
	RP125489-02	Air Deflector Bracket			•	•	1
16	J6143	Air Shield				•	1
17	J6144	Igniter Bracket	•	•	•	•	1
18	J3625	Screw, HWH AB 10-16 x 2.5	•	•	•	•	1
19	F3346	Manual Valve Bracket	•	•	•	•	1
20	**	Assembly, Ramp Base	•	•	•	•	1
21	J5665	Air Shield Bracket				•	1
22	J6490	Log Support Bracket			•	•	1
23	J5535	Log Support Bracket			•	•	1
24	J3635	Pilot Tube	•	•	•	•	1
25	F3339	Burner Tube	•	•			1
	F3340	Burner Tube			•	•	1
26	J5416	Venturi	•	•	•	•	1
27	J5456	Gasket	•	•	•	•	1
28	J4886	Air Shutter	•	•	•	•	1
29	J3619	Orifice, (0.038) PAN #62	•			•	1
	J3609	Orifice, (0.0625) 1/16"			•		1
	F3328	Orifice 0.0225 #74		•			1
30	J6127	Orifice Holder Elbow	•	•	•	•	1
31	J6398	Pan Burner	•	•			1
	J6399	Pan Burner			•	•	1
32	J6397	Support Bracket	•	•	•	•	2