

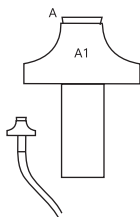
GENERAL INSTRUCTIONS

STEP ONE: WICK ADJUSTMENT:

Before assembling the candle, the wick must be set correctly.

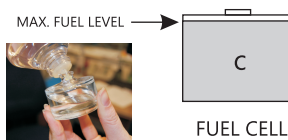
Adjust wick (A) so that the amount of wick showing above the wick holder (A1) is about 1mm or less than the thickness of a one pence piece.

Important: Measure height of wick against the thickness of a one pence piece. It should be less than the coin thickness. The wick should be adjusted by pushing and gently twisting it, from the underside of the wick holder. Do not try and pull the the wick through the wick from position A, especially once the candle has been used.



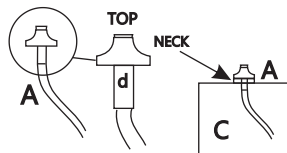
STEP TWO: FILL LAMP

Fill fuel cell © with fuel to within a few millimetres from the top, using your filler bottle and nozzle.



STEP THREE: ASSEMBLE LAMP

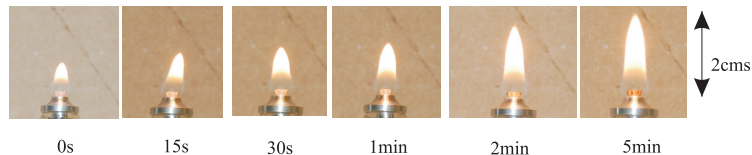
Insert wick structure (A) into fuel cell (C), ensuring that the longer thinner section, marked in the diagram as (d) goes inside the fuel cell.



LIGHTING THE LAMP

Once the candle has been assembled correctly, allow ten minutes for the oil to soak up before lighting for the first time.

Once lit, the flame will take a couple of minutes to achieve its final height, as illustrated in the sequence of pictures below.



IF YOUR FLAME IS VERY LARGE, AND/OR SMOKING, THE WICK IS SET INCORRECTLY!!

Extinguish the flame, allow to cool for **at least ten minutes** before attempting to touch the wick, then return to the beginning of the instruction sheet and re-set the wick to protrude less.

WARNINGS

Fuels such as methylated spirit, petrol or white spirit are unsafe and must not be used. Low grade paraffin is also unsuitable due to excessive smokiness.

The wick holder gets hot during use and should not be touched for several minutes after extinguishing the candle.

Do not move candle once lit.

As with any glass, check regularly for signs of damage. Do not use if there are any chips or cracks in the glass.

Keep away from draughts and flammable materials.

Keep out of the reach of children and pets

R65 Risk Phrase: Paraffin may cause lung damage if swallowed

WARNING: In the case of small children, just a sip of lamp oil or even sucking the wick may lead to life threatening lung damage.

WARNING: If the lamp oil is swallowed, do not induce vomiting. Seek medical advice immediately or contact a poison information centre and show these warnings.

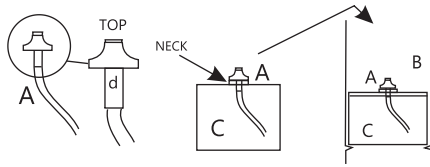
It is important that you do not let the oil run out completely as this can damage the wick. Try to ensure that every day your oil candles have enough fuel to last the whole of service.

Adjust and trim the wick by ½ cm every 60 burning hours to avoid it becoming brittle and snapping.

ASSEMBLY/SPECIAL INSTRUCTIONS

STOCKHOLM/OSLO/LA MANGA

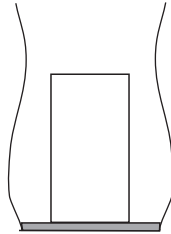
Insert wick structure (A) into fuel cell (C), ensuring that the longer thinner section (d) goes inside the fuel cell.



Holding the neck of the fuel cell between the thumb and forefinger, gently place fuel cell and wick (A + C) into top of shade and slide down until it rests against the waist of the shade.

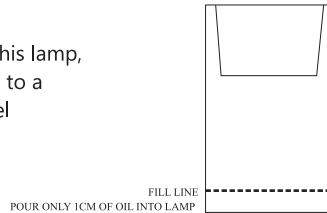
OTHER SHADED CANDLES

To ensure that the fuel cell is stable and sits evenly, the bottom of the shade can be filled with a thin layer of sand to the level shown in the diagram.



CIL2 INTRA LAMP

To achieve the anti-spill qualities of this lamp, it is important that you fill the candle to a height of between 1 and 2 cms of fuel



Clearcraft, Unit 11, Kingstons Farm, Downhall Rd, Matching,
Essex, CM17 0RB. Tel: 01279 731 621.
E-MAIL: sales@clearcraftltd.co.uk
Web: www.clearcraft-catering.co.uk

clearcraft

Instruction booklet