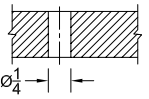
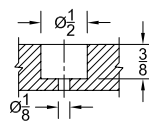
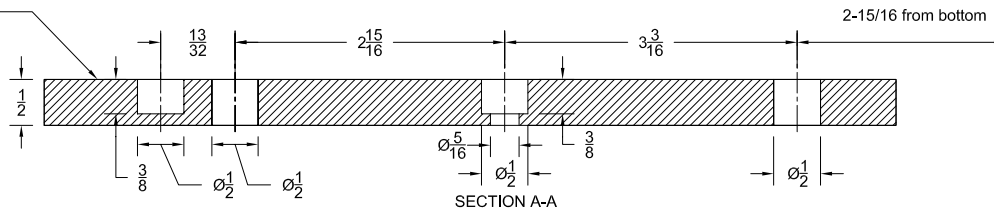
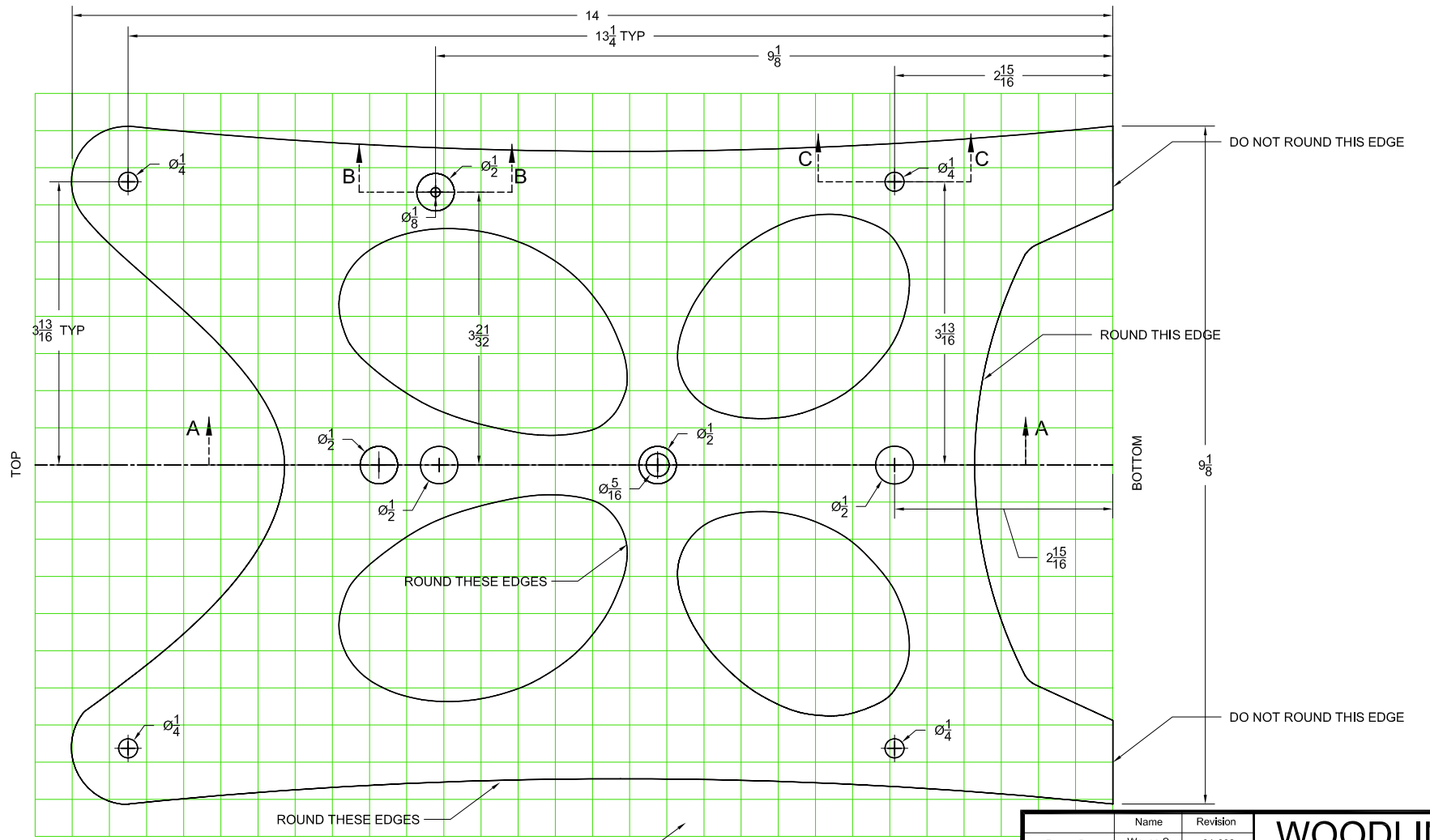


Inside Side of Front Plate



SECTION B-B

SECTION C-C



1/2" x 1/2" SQUARES

FRONT PLATE  
(Inside shown facing up)

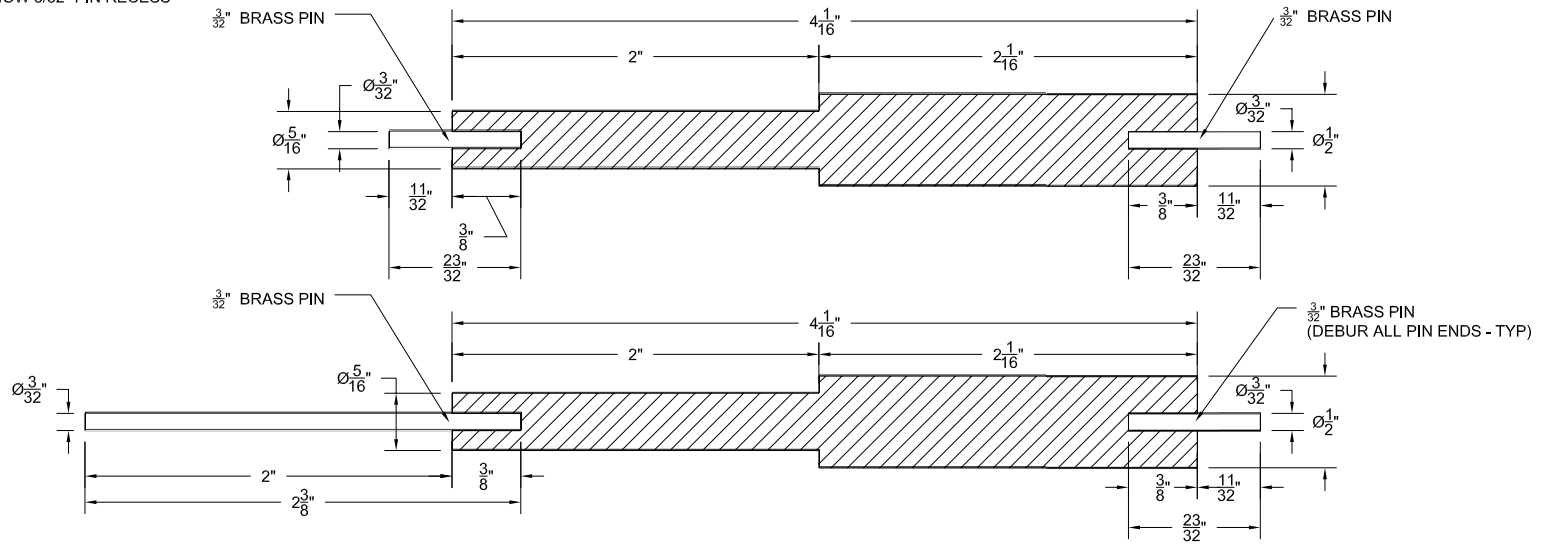
Drawn By	Name	Revision	<b>WOODLINE USA</b>
Wayne S	Wayne S	01-002	
All Drawings Are Property of Woodline USA And Cannot Be Duplicated Or Distributed Without Express Written Permission			Project Name
			WOODLINE CLOCK
Unless Otherwise Specified Dimensions are in Inches All Non-Standard Tolerances Are Specified In Affected Dimensions			Part Description
			FRONT PLATE - Part #1 1/2" SOLID WOOD
mke@woodline.com - 1-800-472-6950		Scale	Page #
3d Drawings by Gregg Zurek		DO NOT SCALE	1

# Part # 18 - ESCAPEMENT AND SECOND HAND ARBORS



1/4 SECTION REMOVED TO SHOW 3/32" PIN RECESS

## SECOND ARBOR SECTION VIEW

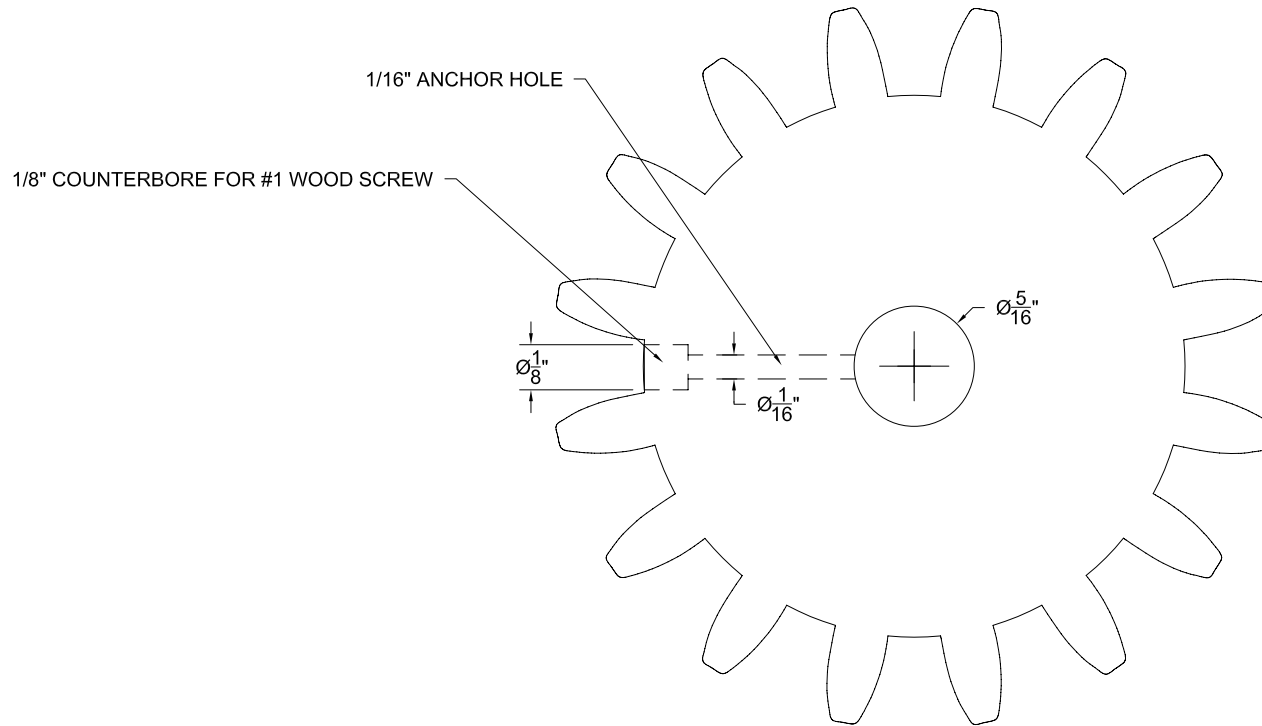


## ESCAPEMENT ARBOR SECTION VIEW

	Name	Revision	<b>WOODLINE USA</b>	
Drawn By	Wayne S	01-002		
All Drawings Are Property of Woodline USA And Cannot Be Duplicated Or Distributed Without Express Written Permission			Project Name <b>WOODLINE CLOCK</b>	
Unless Otherwise Specified Dimensions are in Inches All Non-Standard Tolerances Are Specified In Affected Dimensions			Part Description Part # 18 - Escapement Arbor and Second Hand Arbor - Wood Need 2 - The Second Hand Arbor Uses a Longer Pin To Attach The Second Hand To The Arbor	
mke@woodline.com - 1-800-472-6950			Scale	Page #
3d Drawings by Gregg Zurek			DO NOT SCALE	18

# Part # 17 - 16 Tooth Pinion Gear For Dial Train

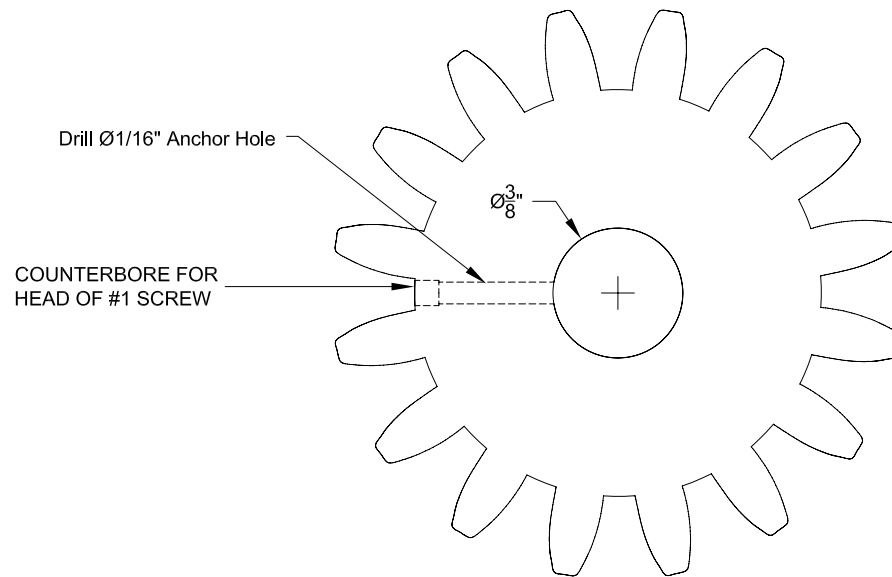
REFER TO TEMPLATE FOR  
GEAR TEETH AND SPOKES.



	Name	Revision	<b>WOODLINE USA</b>	
Drawn By	Wayne S	01-002		
All Drawings Are Property of Woodline USA And Cannot Be Duplicated Or Distributed Without Express Written Permission			Project Name <b>WOODLINE CLOCK</b>	
Unless Otherwise Specified Dimensions are in Inches All Non-Standard Tolerances Are Specified In Affected Dimensions			Part Description Part # 17 - 16 Tooth Pinion Gear For Dial Train - Wood 3/8" Thick - Solid Wood - Color Should Compliment Part # 12	
mke@woodline.com - 1-800-472-6950			Scale	Page #
3d Drawings by Gregg Zurek			DO NOT SCALE	17

# PART #16 - 16 TOOTH PINION GEAR

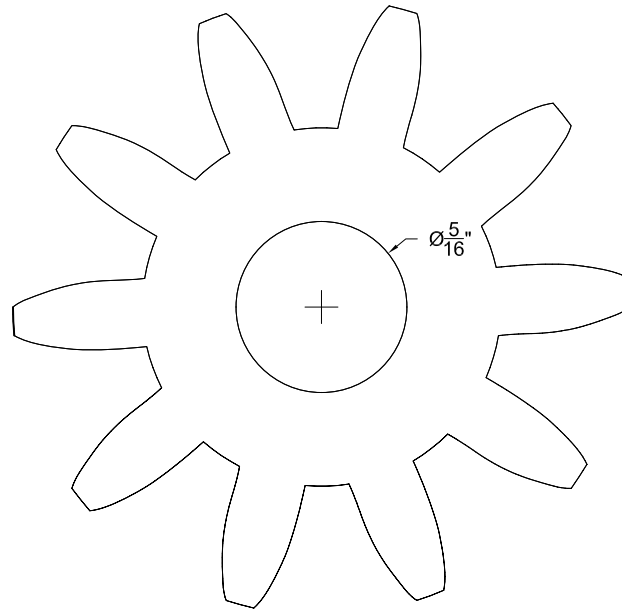
REFER TO TEMPLATE FOR  
GEAR TEETH AND SPOKES.



Name		Revision	<b>WOODLINE USA</b>	
Drawn By	Wayne S	01-002		
All Drawings Are Property of Woodline USA And Cannot Be Duplicated Or Distributed Without Express Written Permission			Project Name <b>WOODLINE CLOCK</b>	
Unless Otherwise Specified Dimensions are in Inches All Non-Standard Tolerances Are Specified In Affected Dimensions			Part Description Part # 16 - 16 Tooth Pinion Gear For Center Arbor - Wood 3/8" Thick - Solid Wood - Drill an Anchor Hole	
mke@woodline.com - 1-800-472-6950			Scale DO NOT SCALE	Page # <b>16</b>
3d Drawings by Gregg Zurek				

# PART #15 - 10 TOOTH PINION GEAR

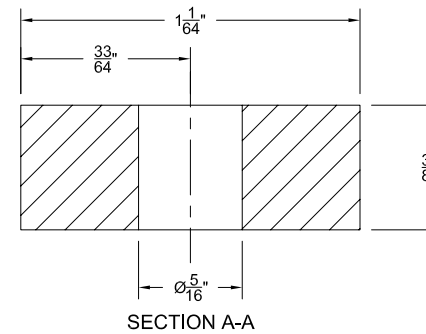
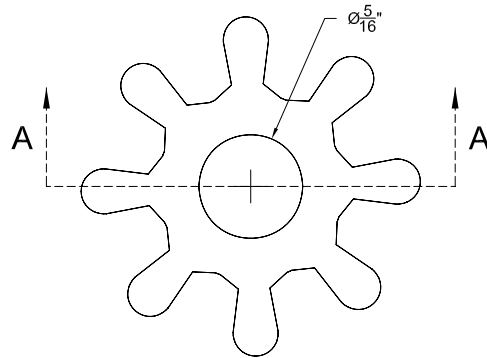
REFER TO TEMPLATE FOR  
GEAR TEETH AND SPOKES.



	Name	Revision	<b>WOODLINE USA</b>	
Drawn By	Wayne S	01-002		
All Drawings Are Property of Woodline USA And Cannot Be Duplicated Or Distributed Without Express Written Permission			Project Name WOODLINE CLOCK	
Unless Otherwise Specified Dimensions are in Inches All Non-Standard Tolerances Are Specified In Affected Dimensions			Part Description Part # 15 - 10 Tooth Pinion Gear For Dial Train - Wood 3/8" Thick - Solid Wood - Color Should Compliment Part # 10	
mke@woodline.com - 1-800-472-6950			Scale	Page #
3d Drawings by Gregg Zurek			DO NOT SCALE	15

PARTS 13 & 14 - 8 TOOTH PINION FOR  
ESCAPEMENT & SECOND HAND  
BOTH PIECES ARE IDENTICAL

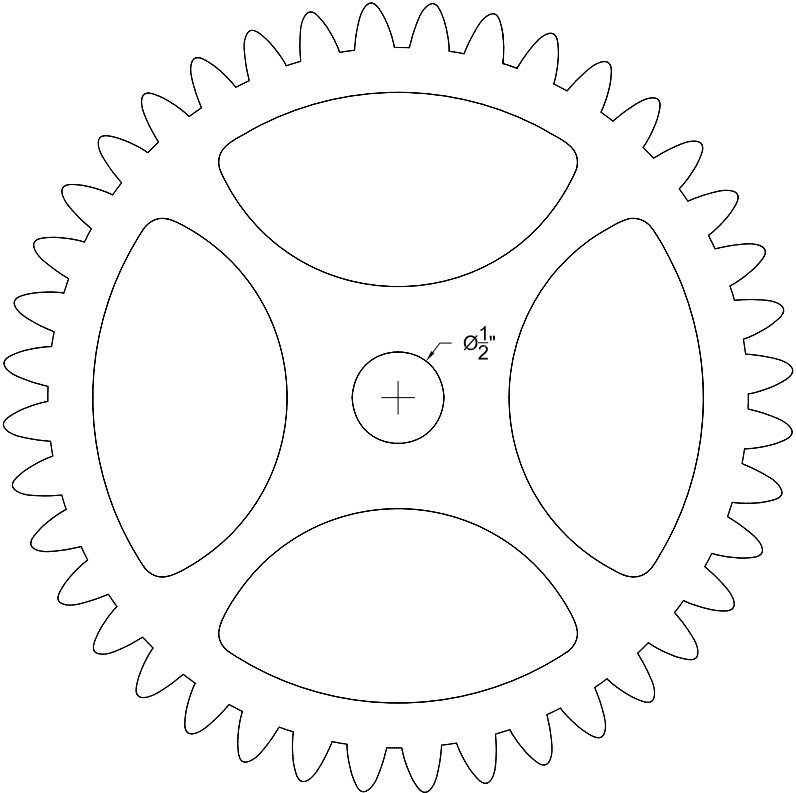
REFER TO TEMPLATE FOR  
GEAR TEETH AND SPOKES.



	Name	Revision	<b>WOODLINE USA</b>	
Drawn By	Wayne S	01-002		
All Drawings Are Property of Woodline USA And Cannot Be Duplicated Or Distributed Without Express Written Permission			Project Name WOODLINE CLOCK	
Unless Otherwise Specified Dimensions are in Inches All Non-Standard Tolerances Are Specified In Affected Dimensions			Part Description Part # 13 & 14 - 8 Tooth Pinion Gear For Escape and Second Hand 3/8" Thick - Solid Wood - Part # 13 is For Escape - Part # 14 is For Second Hand Arbor	
mke@woodline.com - 1-800-472-6950			Scale DO NOT SCALE	Page # 12
3d Drawings by Gregg Zurek				

# PART #12 - 40 TOOTH GEAR

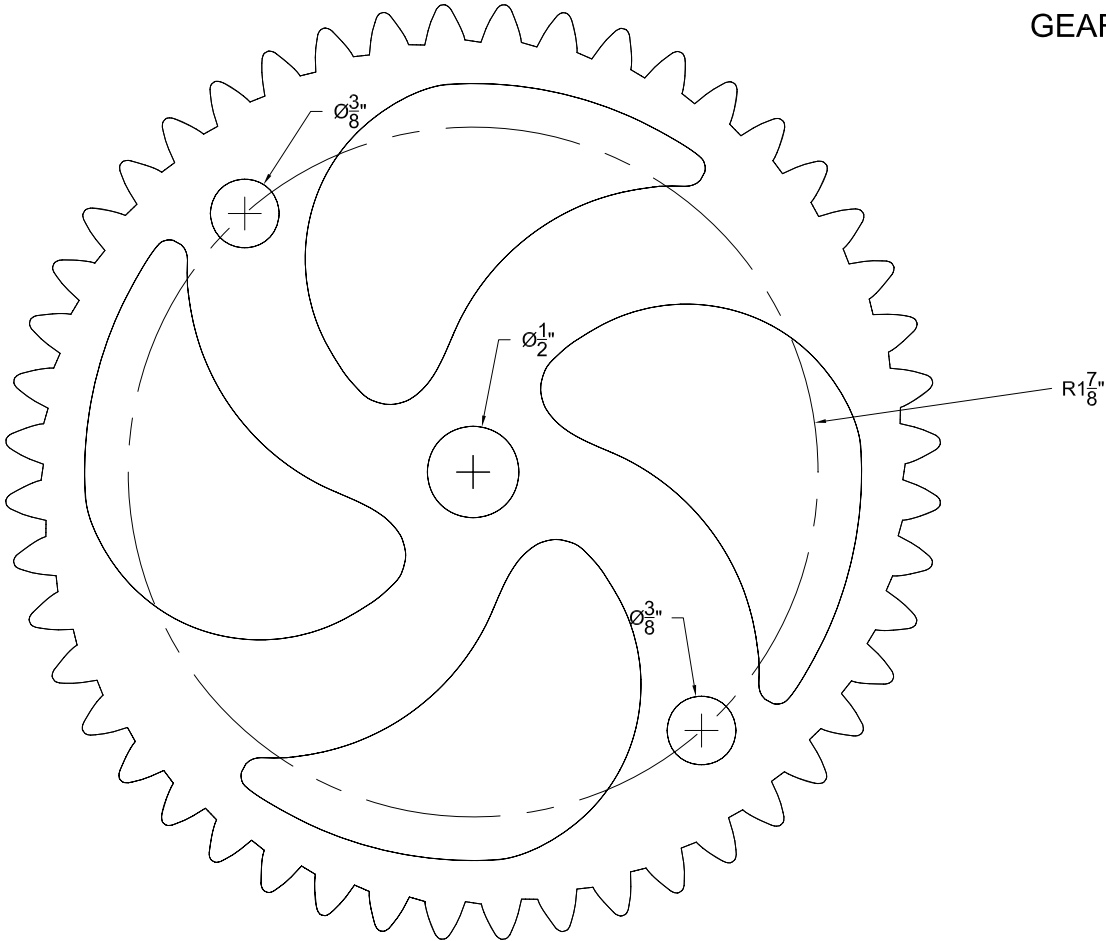
REFER TO TEMPLATE FOR  
GEAR TEETH AND SPOKES.



	Name	Revision	<b>WOODLINE USA</b>	
Drawn By	Wayne S	01-002		
All Drawings Are Property of Woodline USA And Cannot Be Duplicated Or Distributed Without Express Written Permission			Project Name WOODLINE CLOCK	
Unless Otherwise Specified Dimensions are in Inches All Non-Standard Tolerances Are Specified In Affected Dimensions			Part Description Part # 12 - 40 Tooth Gear - Wood 3/8" Thick - Color Should Compliment Part # 17	
mke@woodline.com - 1-800-472-6950			Scale	Page #
3d Drawings by Gregg Zurek			DO NOT SCALE	12

# PART #11 - 48 TOOTH GEAR FOR DRIVE TRAIN

REFER TO TEMPLATE FOR GEAR TEETH AND SPOKES.

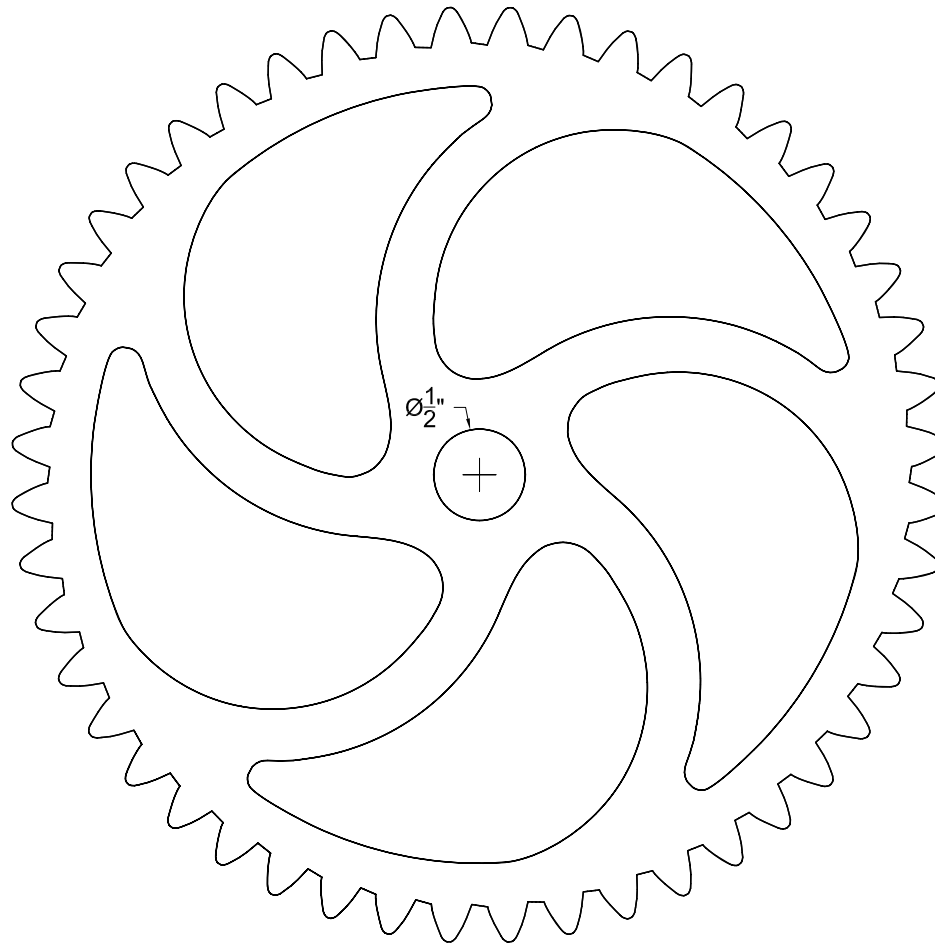


	Name	Revision	<b>WOODLINE USA</b>	
Drawn By	Wayne S	01-002		
All Drawings Are Property of Woodline USA And Cannot Be Duplicated Or Distributed Without Express Written Permission			Project Name <b>WOODLINE CLOCK</b>	
Unless Otherwise Specified Dimensions are in Inches All Non-Standard Tolerances Are Specified In Affected Dimensions			Part Description Part # 11 - 48 Tooth Gear For Drive Gear - Wood 3/8" Thick - Mount Pawls In Spoke Area	
mke@woodline.com - 1-800-472-6950			Scale	Page #
3d Drawings by Gregg Zurek			DO NOT SCALE	11



# PART #10 - 48 TOOTH GEAR FOR DIAL TRAIN

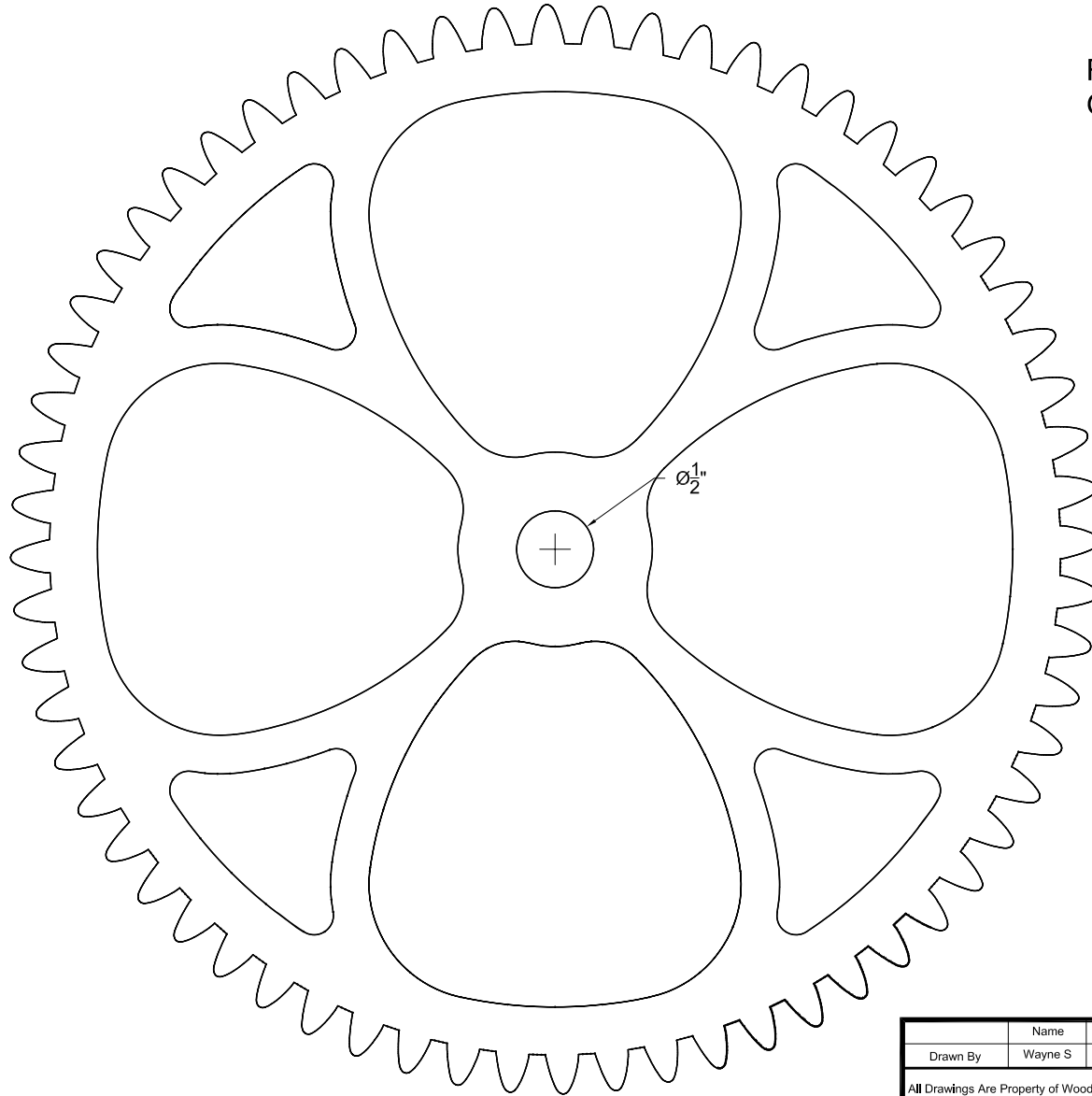
REFER TO TEMPLATE FOR  
GEAR TEETH AND SPOKES.



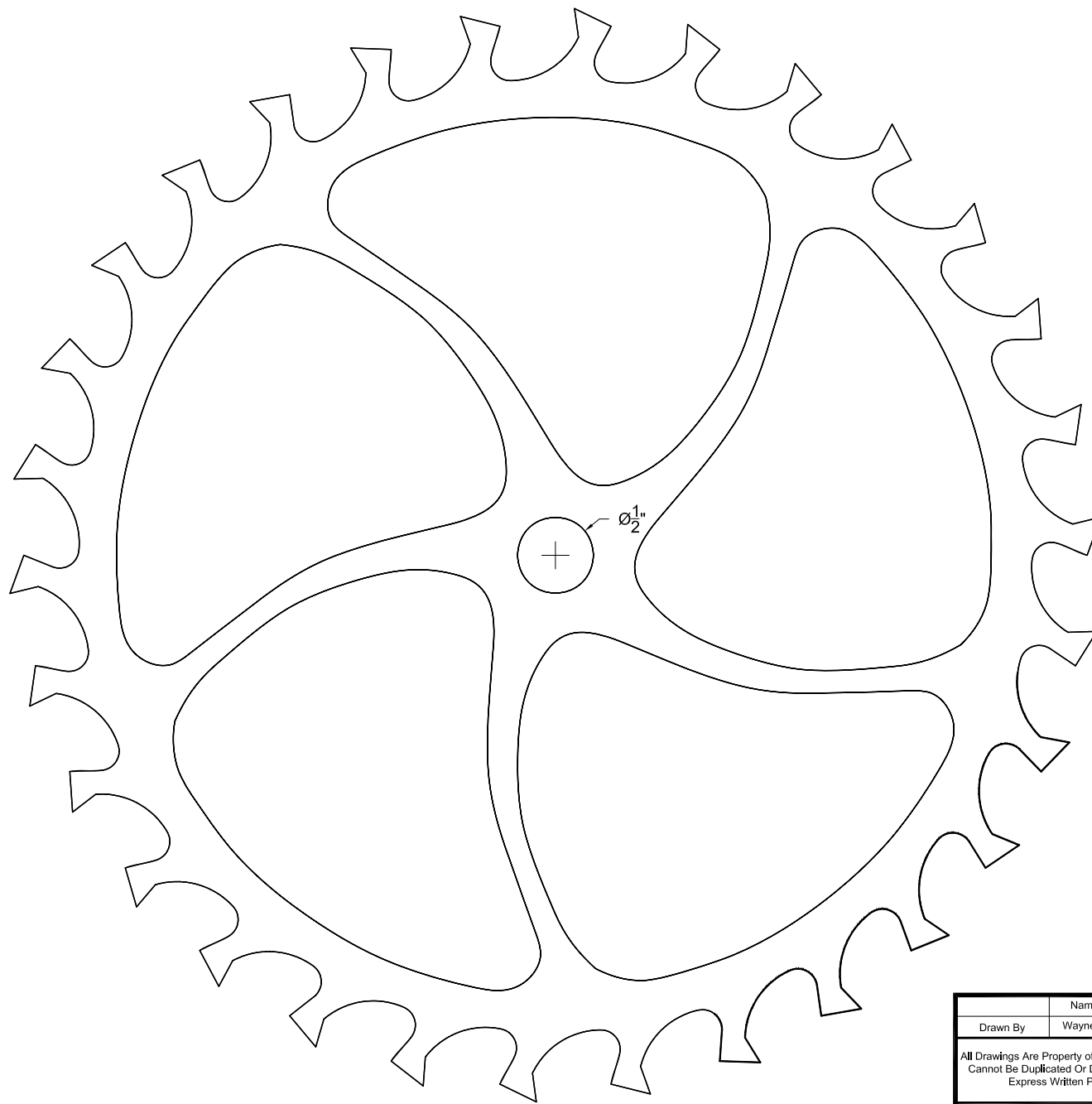
	Name	Revision	<b>WOODLINE USA</b>	
Drawn By	Wayne S	01-002		
All Drawings Are Property of Woodline USA And Cannot Be Duplicated Or Distributed Without Express Written Permission			Project Name WOODLINE CLOCK	
Unless Otherwise Specified Dimensions are in Inches All Non-Standard Tolerances Are Specified In Affected Dimensions			Part Description Part # 10 - 48 Tooth Gear For Dial Train 3/8" Thick - Very Visible - Highly figured Wood Works Well	
mke@woodline.com - 1-800-472-6950			Scale	Page #
3d Drawings by Gregg Zurek			DO NOT SCALE	10

# PART #8 - 64 TOOTH GEAR

REFER TO TEMPLATE FOR  
GEAR TEETH AND SPOKES.



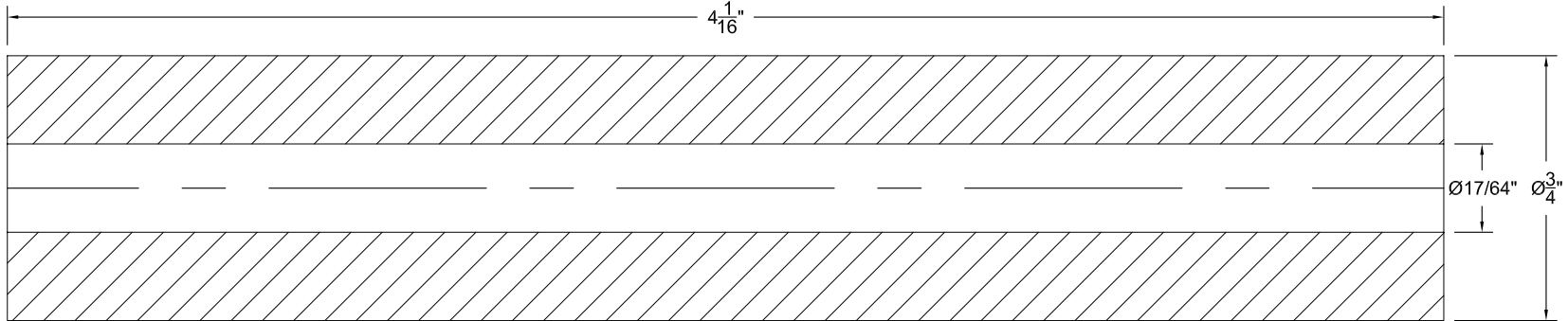
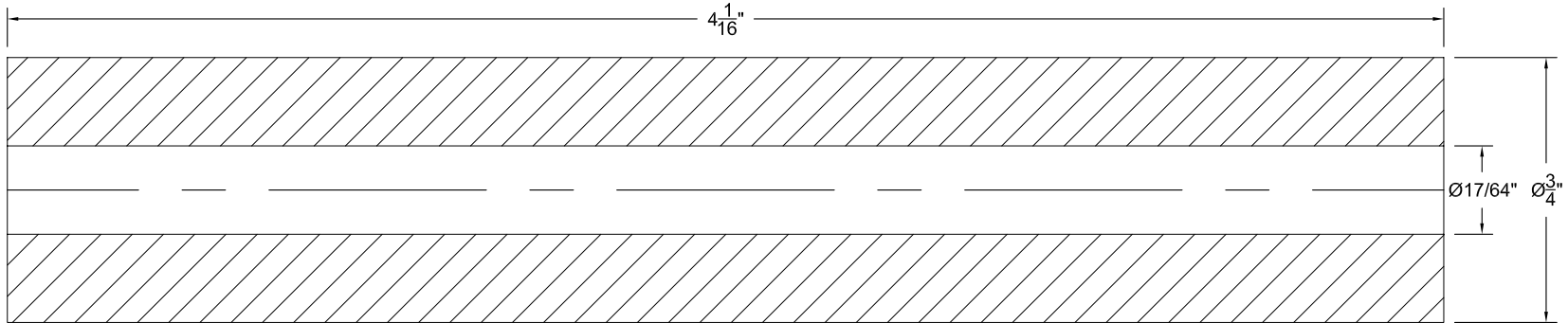
	Name	Revision	<b>WOODLINE USA</b>	
Drawn By	Wayne S	01-002		
All Drawings Are Property of Woodline USA And Cannot Be Duplicated Or Distributed Without Express Written Permission			Project Name <b>WOODLINE CLOCK</b>	
Unless Otherwise Specified Dimensions are in Inches All Non-Standard Tolerances Are Specified In Affected Dimensions			Part Description <b>PART #9 - 64 TOOTH GEAR 3/8" THICK PLYWOOD NEED 2PCS.</b>	
mke@woodline.com • 1-800-472-6950			Scale <b>DO NOT SCALE</b>	Page # <b>9</b>
3d Drawings by Gregg Zurek				



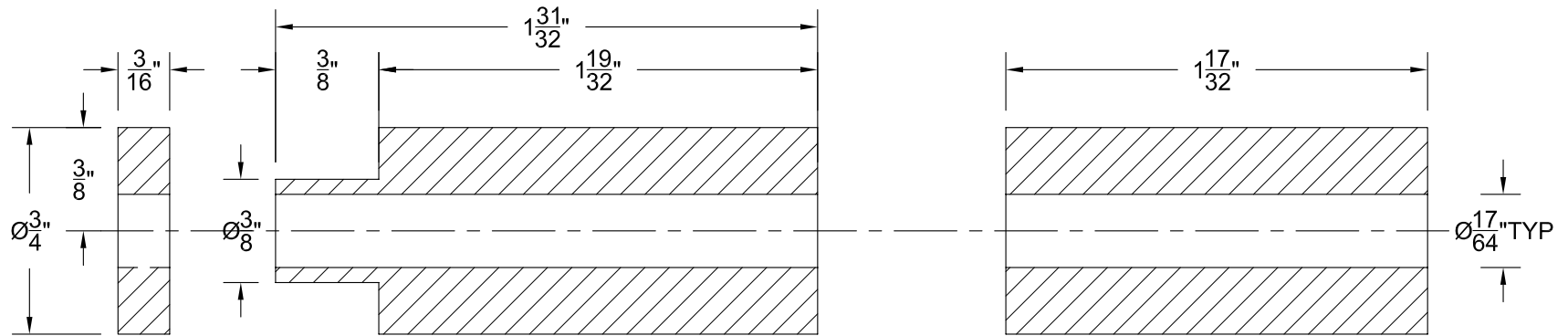
REFER TO TEMPLATE FOR  
GEAR TEETH AND SPOKES.

	Name	Revision	<b>WOODLINE USA</b>	
Drawn By	Wayne S	01-002		
All Drawings Are Property of Woodline USA And Cannot Be Duplicated Or Distributed Without Express Written Permission			Project Name WOODLINE CLOCK	
Unless Otherwise Specified Dimensions are in Inches All Non-Standard Tolerances Are Specified In Affected Dimensions			Part Description ESCAPEMENT GEAR - PART #8 3/8" THICK PLYWOOD CRITICAL PART- BE CAREFUL WHEN FINISHING	
mke@woodline.com • 1-800-472-6950			Scale DO NOT SCALE	Page # 8
3d Drawings by Gregg Zurek				

# PART #7 - UPPER SPACERS

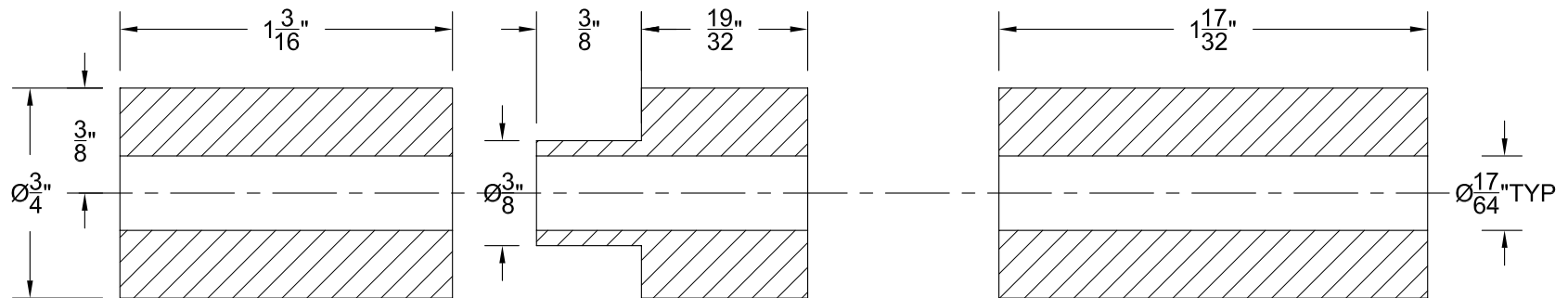


	Name	Revision	<b>WOODLINE USA</b>	
Drawn By	Wayne S	01-002		
All Drawings Are Property of Woodline USA And Cannot Be Duplicated Or Distributed Without Express Written Permission			Project Name WOODLINE CLOCK	
Unless Otherwise Specified Dimensions are in Inches All Non-Standard Tolerances Are Specified In Affected Dimensions			Part Description PART #7 - UPPER SPACERS 3/4" SOLID	
mke@woodline.com • 1-800-472-6950			Scale DO NOT SCALE	Page # 7
3d Drawings by Gregg Zurek				



**PART #4 (2 PCS)**  
RIGHT LOWER STANDOFF

**PART #5**  
STANDOFF SPACER

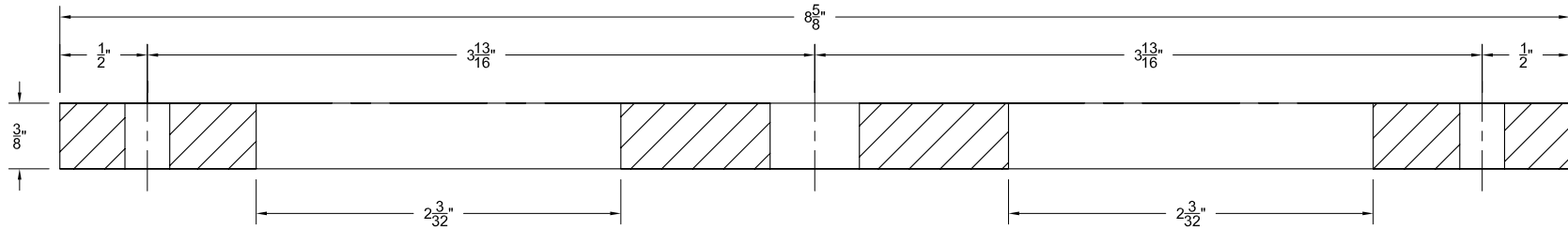


**PART #6 (2 PCS)**  
LEFT LOWER STANDOFF

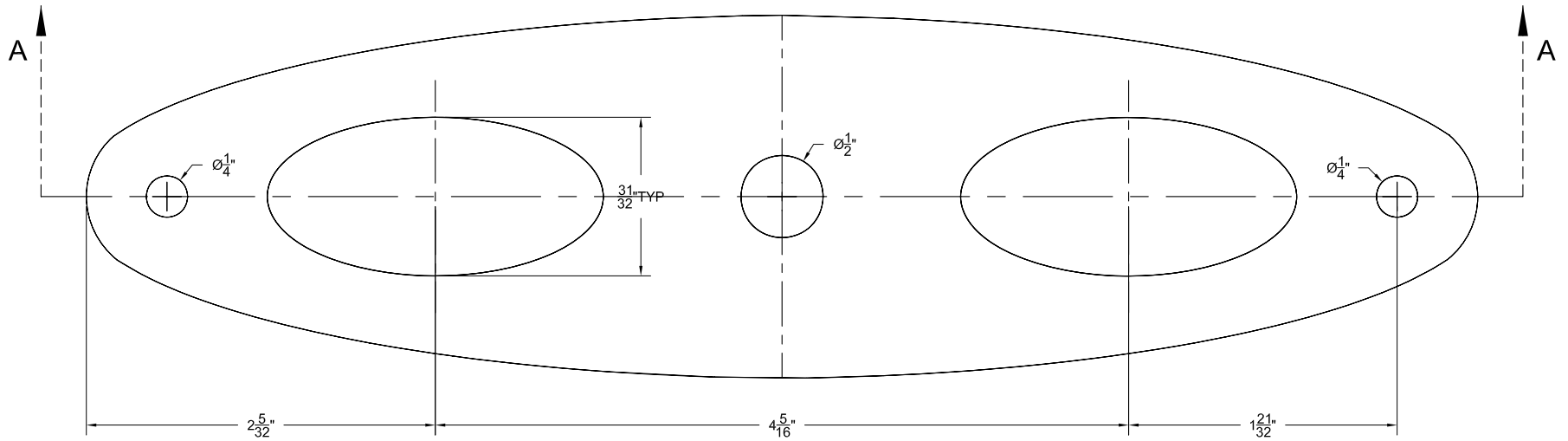
**PART #5**  
STANDOFF SPACER

Drawn By	Name	Revision	<b>WOODLINE USA</b>	
Wayne S	Wayne S	01-002		
All Drawings Are Property of Woodline USA And Cannot Be Duplicated Or Distributed Without Express Written Permission			Project Name WOODLINE CLOCK	
Unless Otherwise Specified Dimensions are in Inches All Non-Standard Tolerances Are Specified In Affected Dimensions			Part Description PARTS 4,5 & 6 - STANDOFFS 3/4" SOLID	
mke@woodline.com • 1-800-472-6950			Scale DO NOT SCALE	Page # 4
3d Drawings by Gregg Zurek				

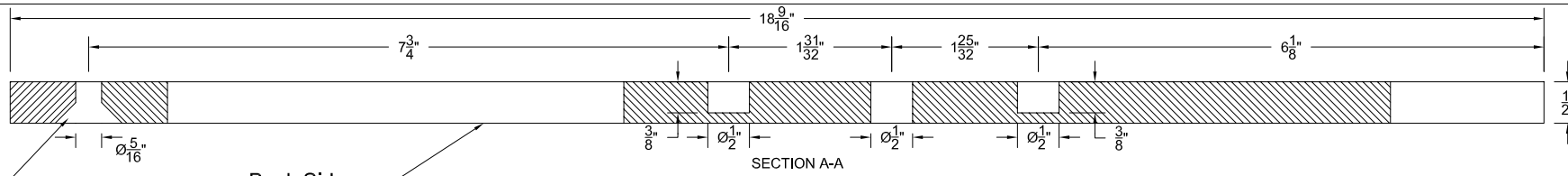
# INTERMEDIATE PLATE Part #3



SECTION A-A



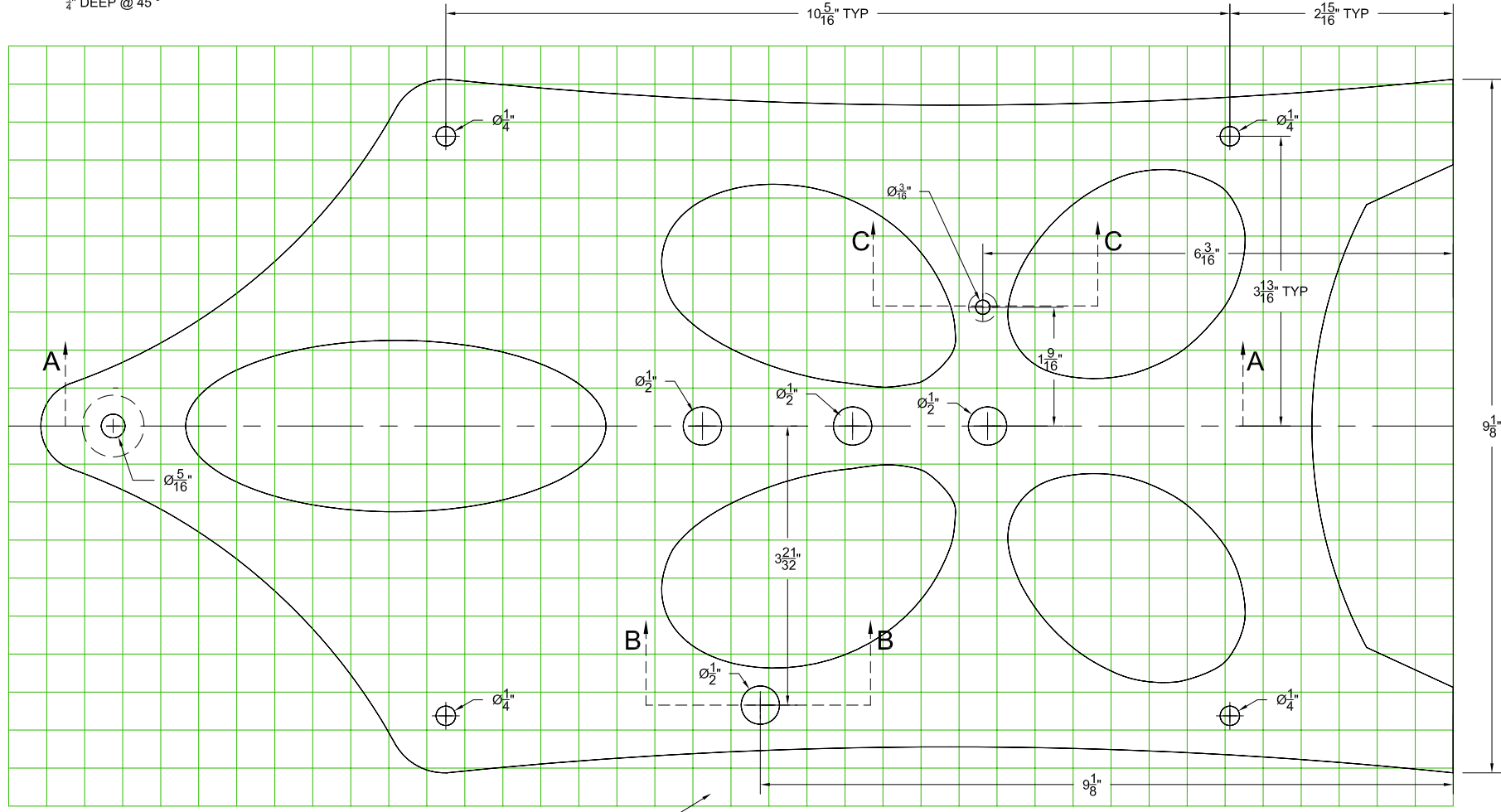
	Name	Revision	<b>WOODLINE USA</b>	
Drawn By	Wayne S	01-002		
All Drawings Are Property of Woodline USA And Cannot Be Duplicated Or Distributed Without Express Written Permission			Project Name <b>WOODLINE CLOCK</b>	
Unless Otherwise Specified Dimensions are in Inches All Non-Standard Tolerances Are Specified In Affected Dimensions			Part Description <b>INTERMEDIATE PLATE - Part #3 3/8" SOLID WOOD</b>	
mke@woodline.com • 1-800-472-6950			Scale <b>DO NOT SCALE</b>	Page # <b>3</b>
3d Drawings by Gregg Zurek				



COUNTERSINK THIS HOLE  
1/4" DEEP @ 45°

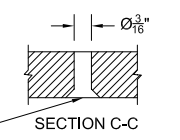
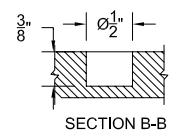
Back Side

SECTION A-A

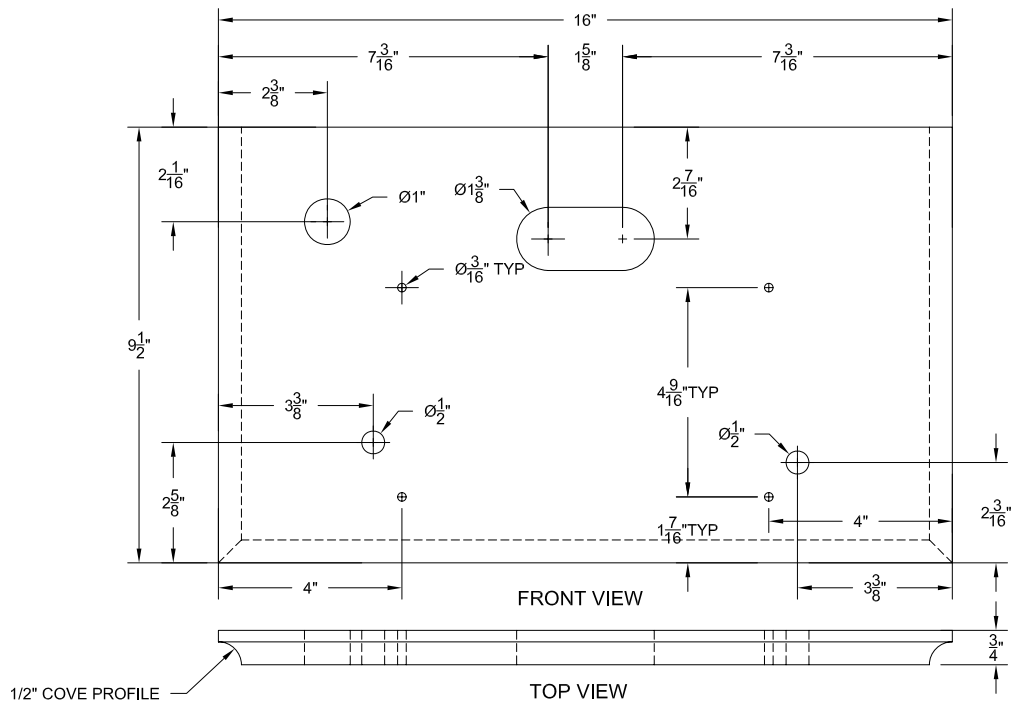


1/2" x 1/2" SQUARES

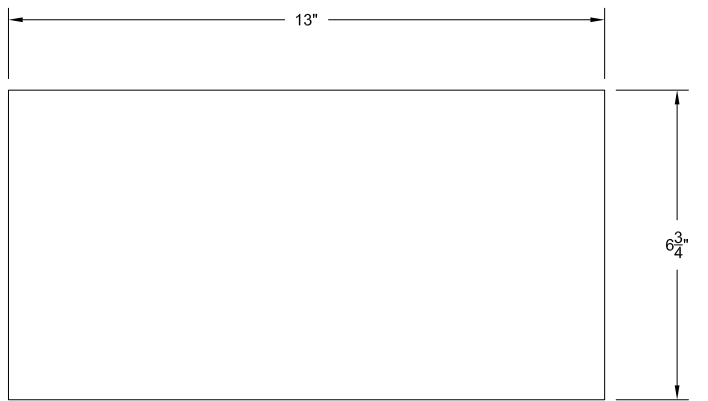
REAR PLATE  
(INSIDE SHOWN FACING UP)



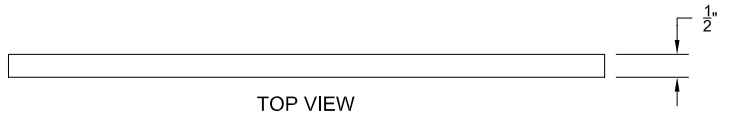
Name		Revision		<b>WOODLINE USA</b>	
Drawn By		01-002			
Wayne S				Project Name	
All Drawings Are Property of Woodline USA And Cannot Be Duplicated Or Distributed Without Express Written Permission				WOODLINE CLOCK	
				Part Description	
Unless Otherwise Specified Dimensions are in Inches				REAR PLATE - Part #2	
All Non-Standard Tolerances Are Specified In Affected Dimensions				1/2" SOLID WOOD	
mke@woodline.com • 1-800-472-6950				Scale	
3d Drawings by Gregg Zurek				DO NOT SCALE	
				Page #	
				2	



TOP SHELF - PART WS-1

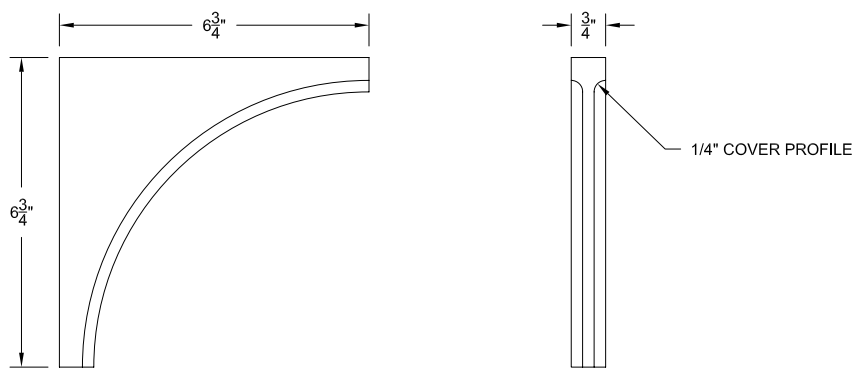


FRONT VIEW



TOP VIEW

BACK - PART WS-3



FRONT VIEW

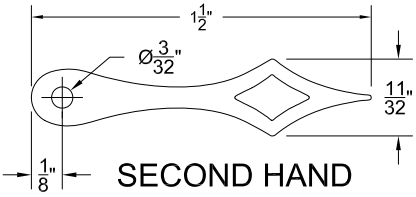
RIGHT VIEW

SHELF BRACKETS (2 NEEDED) PART WS-2

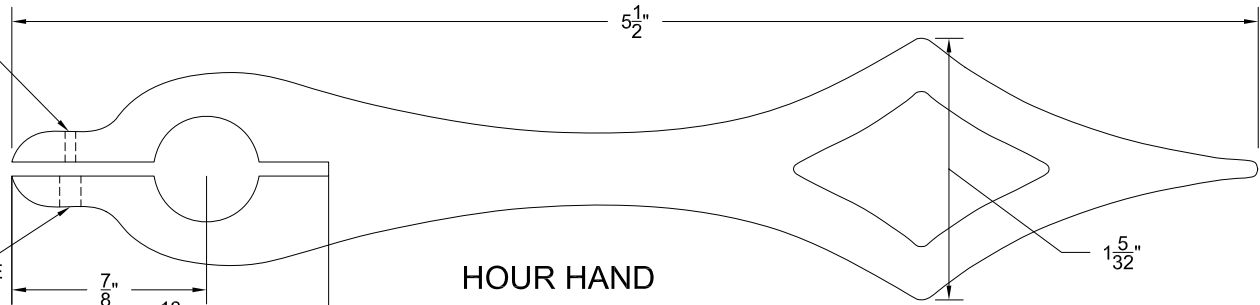
	Name	Revision	<b>WOODLINE USA</b>	
Drawn By	Wayne S	01-002		
All Drawings Are Property of Woodline USA And Cannot Be Duplicated Or Distributed Without Express Written Permission			Project Name <b>WOODLINE CLOCK</b>	
Unless Otherwise Specified Dimensions are in Inches All Non-Standard Tolerances Are Specified In Affected Dimensions			Part Description <b>WALL MOUNTED SHELF 3/4" SOLID WOOD</b>	
mke@woodline.com - 1-800-472-6950			Scale	Page #
3d Drawings by Gregg Zurek			DO NOT SCALE	WS1



REFER TO TEMPLATES



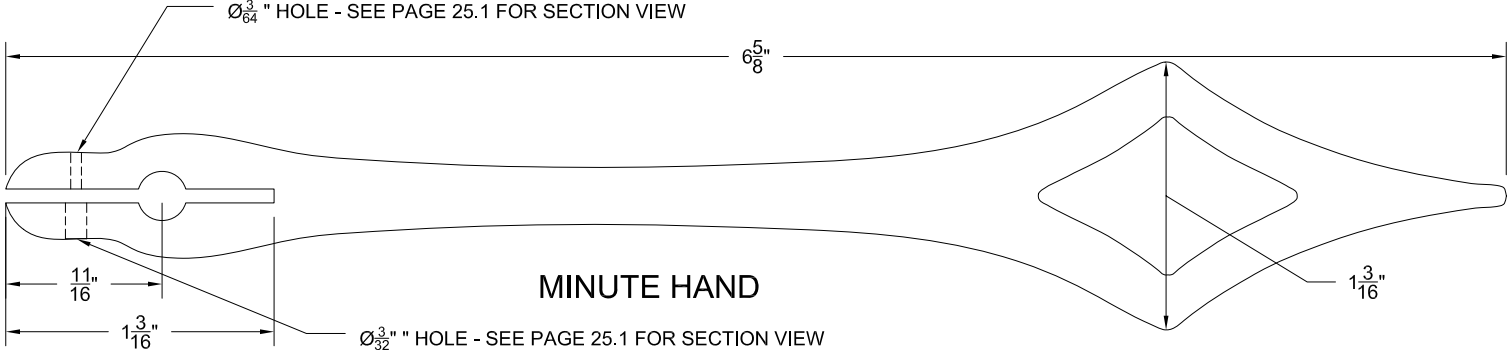
SECOND HAND



HOUR HAND

$\varnothing \frac{3}{64}$ " HOLE - SEE PAGE 25.1 FOR SECTION VIEW

$\varnothing \frac{3}{32}$ " HOLE  
SEE PAGE 25.1 FOR SECTION VIEW

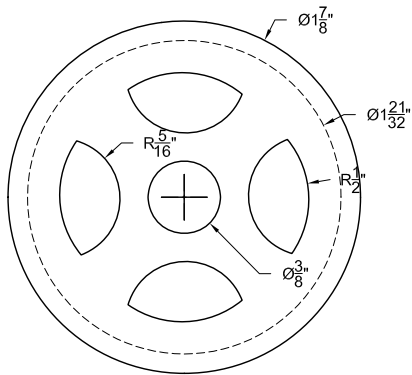


MINUTE HAND

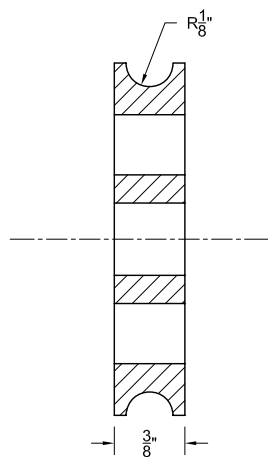
$\varnothing \frac{3}{64}$ " HOLE - SEE PAGE 25.1 FOR SECTION VIEW

$\varnothing \frac{3}{32}$ " HOLE - SEE PAGE 25.1 FOR SECTION VIEW

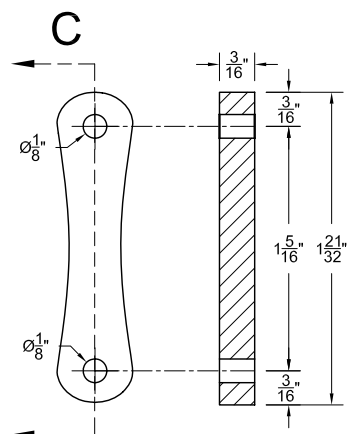
	Name	Revision	<b>WOODLINE USA</b>
Drawn By	Wayne S	01-002	
All Drawings Are Property of Woodline USA And Cannot Be Duplicated Or Distributed Without Express Written Permission			Project Name <b>WOODLINE CLOCK</b>
Unless Otherwise Specified Dimensions are in Inches All Non-Standard Tolerances Are Specified In Affected Dimensions			Part Description Part # 25 - Minute Hand - Part # 26 - Hour Hand - Part # 27 Second Hand Screw holds hand in place on arbor
mke@woodline.com - 1-800-472-6950			Scale <b>DO NOT SCALE</b>
3d Drawings by Gregg Zurek			Page # <b>25-27</b>



FRONT VIEW  
PART #52  
(2 REQUIRED)

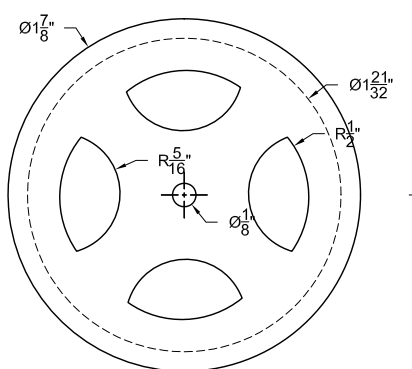


SECTION VIEW  
RIGHT VIEW

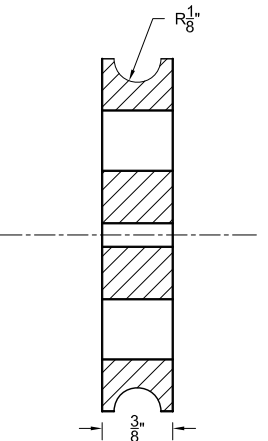


SECTION C-C  
FRONT VIEW RIGHT VIEW

PART #54  
(4 REQUIRED)



FRONT VIEW  
PART #53  
(2 REQUIRED)

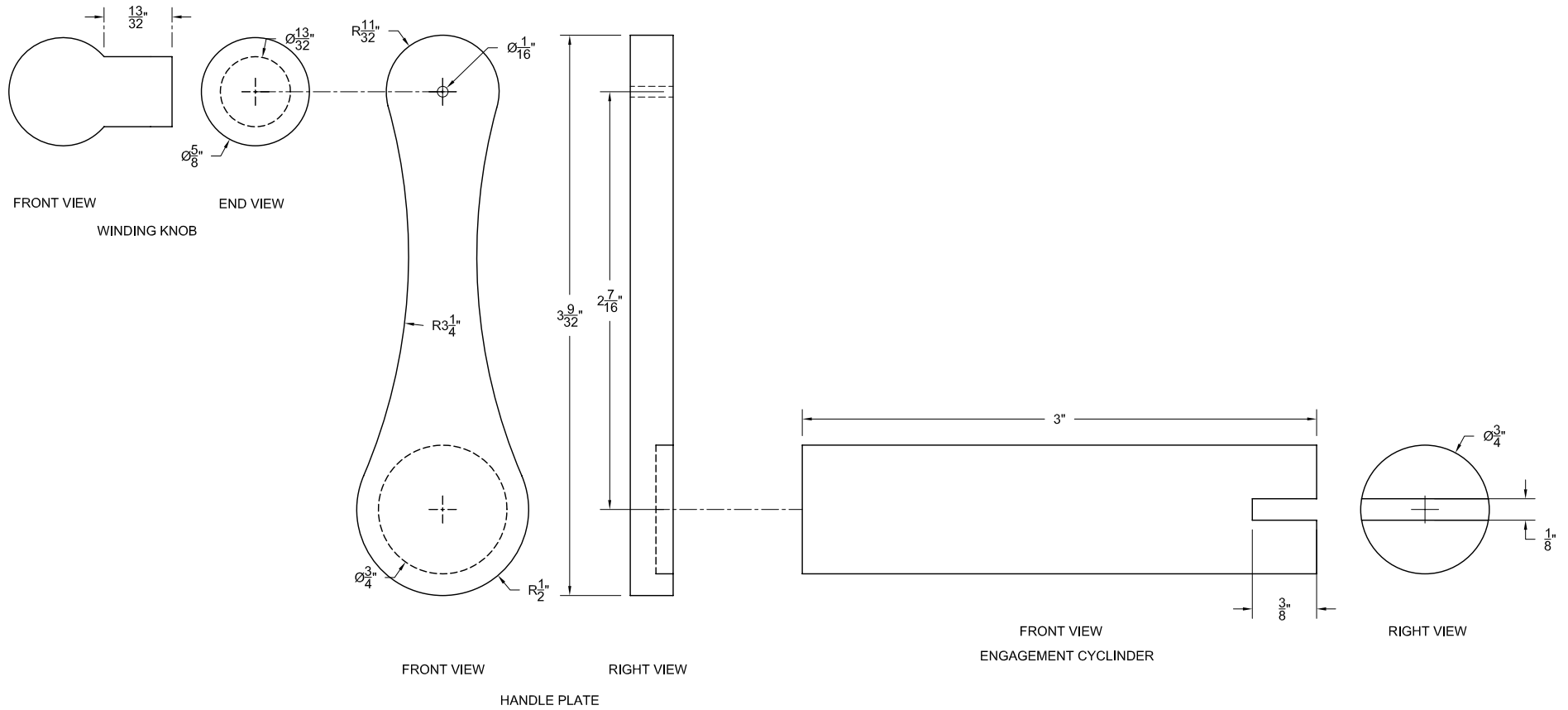


SECTION VIEW  
RIGHT VIEW

	Name	Revision	<b>WOODLINE USA</b>	
Drawn By	Wayne S	01-002		
All Drawings Are Property of Woodline USA And Cannot Be Duplicated Or Distributed Without Express Written Permission			Project Name <b>WOODLINE CLOCK</b>	
Unless Otherwise Specified Dimensions are in Inches All Non-Standard Tolerances Are Specified In Affected Dimensions			Part Description Part # 52 - Movement Pulley - Part # 53 - Weight Pulley - Part # 54 - Weight Pulley Links Weight Pulley System - Need 2 of Part # 52, Need 2 of Part # 53, Need 4 of Part # 54 - Tabs are held in place by brass pin	
mke@woodline.com • 1-800-472-6950			Scale	Page #
3d Drawings by Gregg Zurek			DO NOT SCALE	52

# PARTS #49 -50 & 51

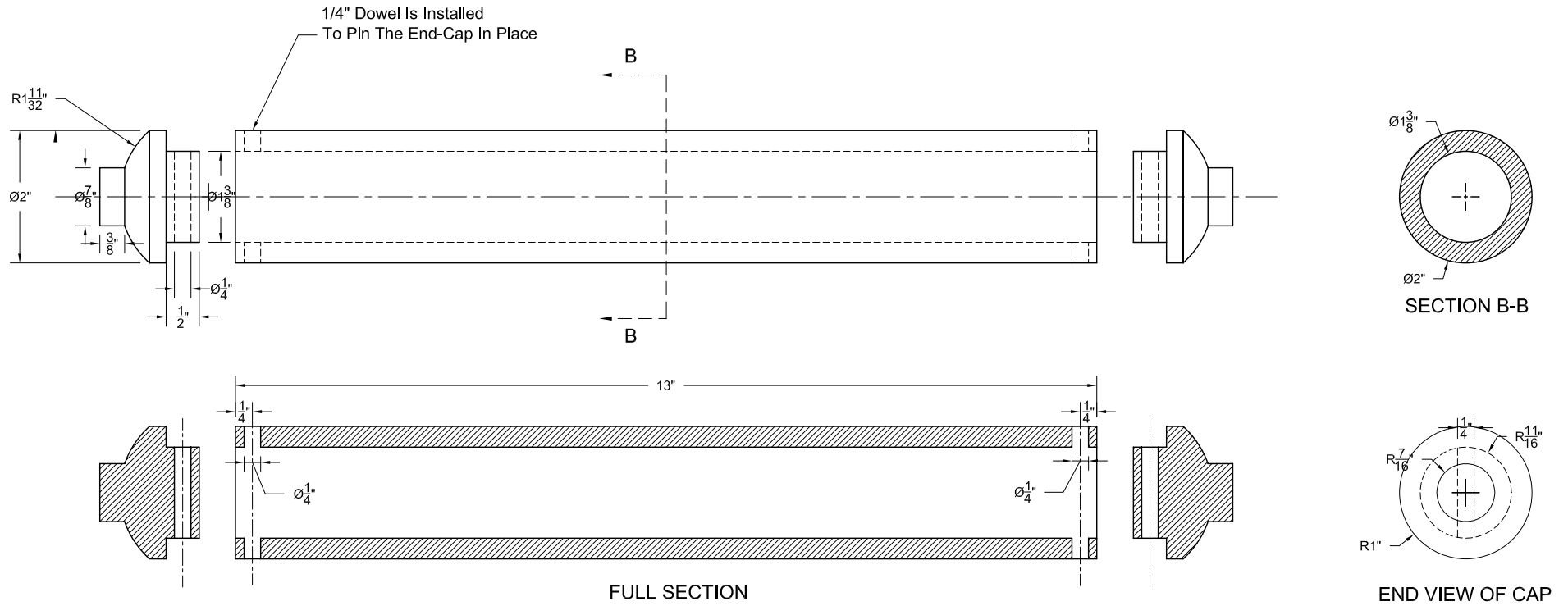
## WINDING ENGAGEMENT CYLINDER - KNOB - HANDLE PLATE



	Name	Revision	<b>WOODLINE USA</b>	
Drawn By	Wayne S	01-002		
All Drawings Are Property of Woodline USA And Cannot Be Duplicated Or Distributed Without Express Written Permission			Project Name	
			WOODLINE CLOCK	
Unless Otherwise Specified Dimensions are in Inches All Non-Standard Tolerances Are Specified In Affected Dimensions			Part Description	
			Part # 49 - Winding Engagement Cylinder - Part # 50 - Winding Knob - Part # 51 - Handle Plate The Three Parts The Combine To Produce The Winding Key	
mke@woodline.com - 1-800-472-6950			Scale	Page #
3d Drawings by Gregg Zurek			DO NOT SCALE	49

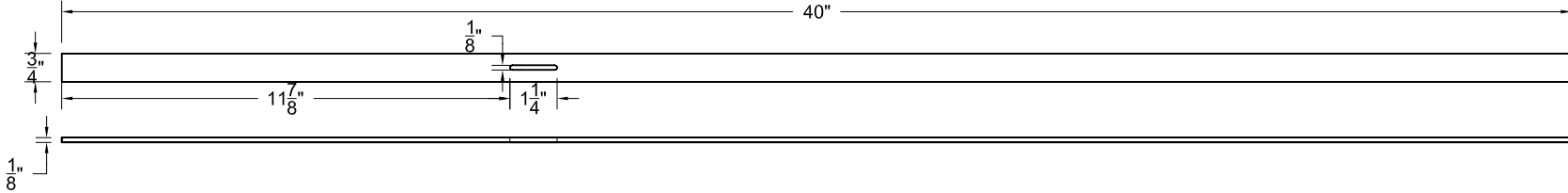
# PART #47 - WEIGHT CASE W / END-CAPS

Clock weight shell with ends  
 Fill with lead shot  
 Use screw eye in end to attach cable - see page 47.1



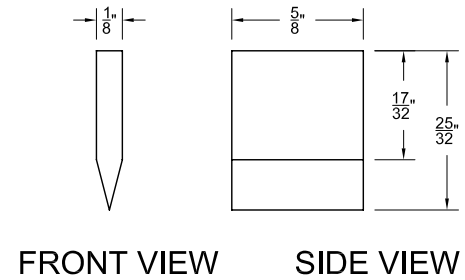
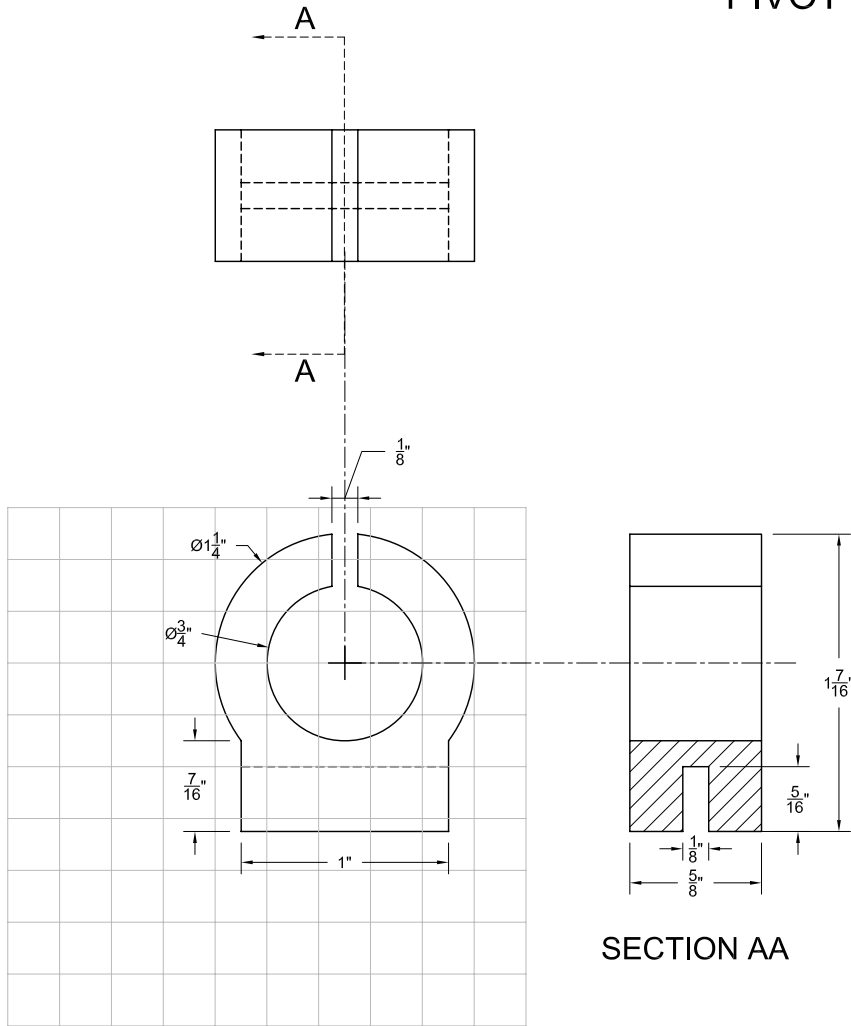
Drawn By	Name	Revision	<b>WOODLINE USA</b>	
Wayne S	Wayne S	01-002		
All Drawings Are Property of Woodline USA And Cannot Be Duplicated Or Distributed Without Express Written Permission			Project Name WOODLINE CLOCK	
Unless Otherwise Specified Dimensions are in Inches All Non-Standard Tolerances Are Specified In Affected Dimensions			Part Description Part # 47 - Weight Case With End-Caps - Wood Need 2 - Wooden Tube with End Caps to Hold Weight Material - Screw Hook In End-Cap to attach to Weight Cable	
mke@woodline.com - 1-800-472-6950			Scale	Page #
3d Drawings by Gregg Zurek			DO NOT SCALE	47

# PART #45 - PENDULUM ROD



	Name	Revision	<b>WOODLINE USA</b>	
Drawn By	Wayne S	01-002		
All Drawings Are Property of Woodline USA And Cannot Be Duplicated Or Distributed Without Express Written Permission			Project Name <b>WOODLINE CLOCK</b>	
Unless Otherwise Specified Dimensions are in Inches All Non-Standard Tolerances Are Specified In Affected Dimensions			Part Description Part # 45 - Pendulum Rod - Wood 1/8" Thick - Start With 40" and Shorten During Final Adjustment Of The Pendulum - Match Color and Grain With Pendulum	
mke@woodline.com - 1-800-472-6950			Scale	Page #
3d Drawings by Gregg Zurek			DO NOT SCALE	45

# PART #44 - PENDULUM RETAINER AND PIVOT WEDGE



FRONT VIEW

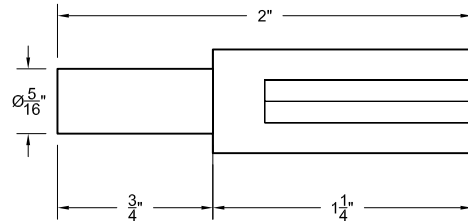
SIDE VIEW

SECTION AA

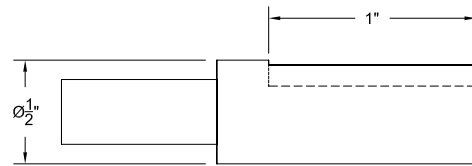
EACH SQUARE REPRESENTS 1/4" X 1/4"

Drawn By	Name	Revision	WOODLINE USA	
Wayne S	Wayne S	01-002	WOODLINE CLOCK	
All Drawings Are Property of Woodline USA And Cannot Be Duplicated Or Distributed Without Express Written Permission			Part Description Part # 44 - Pendulum Retainer and Pendulum Pivot Wedge - Wood Pendulum pivot wedge is glued into slot during assembly as it rides inside the V-Groove of the pendulum hanger support rod	
Unless Otherwise Specified Dimensions are in Inches All Non-Standard Tolerances Are Specified In Affected Dimensions			Scale	Page #
mke@woodline.com • 1-800-472-6950			DO NOT SCALE	44
3d Drawings by Gregg Zurek				

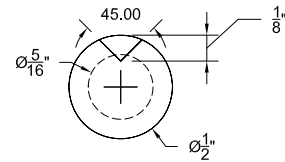
# PART #43 - PENDULUM HANGER SUPPORT



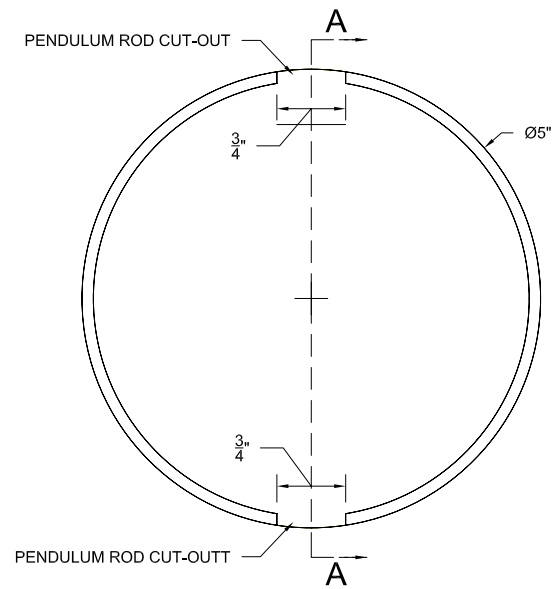
TOP VIEW



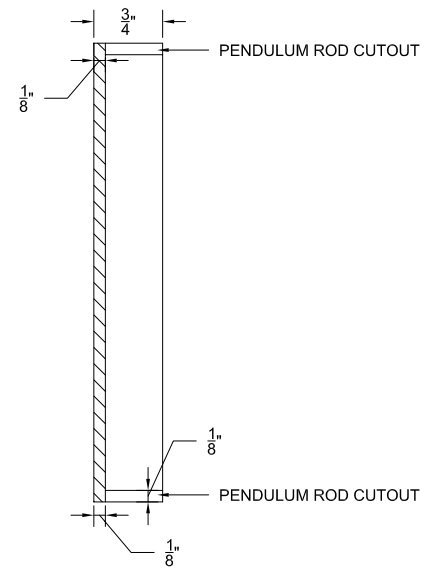
FRONT VIEW



	Name	Revision	<b>WOODLINE USA</b>	
Drawn By	Wayne S	01-002		
All Drawings Are Property of Woodline USA And Cannot Be Duplicated Or Distributed Without Express Written Permission			Project Name WOODLINE CLOCK	
Unless Otherwise Specified Dimensions are in Inches All Non-Standard Tolerances Are Specified In Affected Dimensions			Part Description Part # 43 - Pendulum Hanger Support - Wood Cut "V" in 1/2" section to accept pendulum pivot	
mke@woodline.com • 1-800-472-6950			Scale	Page #
3d Drawings by Gregg Zurek			DO NOT SCALE	43



BACK VIEW

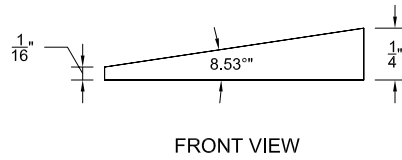
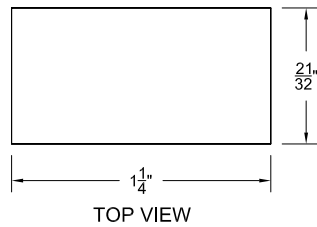


SECTION A-A

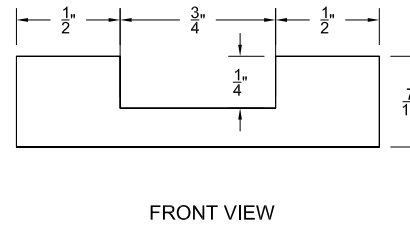
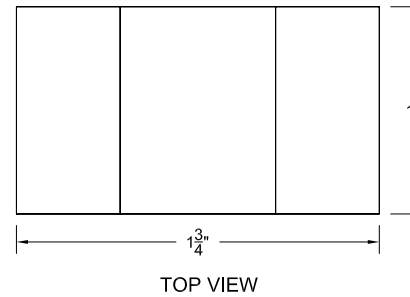
	Name	Revision	<b>WOODLINE USA</b>	
Drawn By	Wayne S	01-002		
All Drawings Are Property of Woodline USA And Cannot Be Duplicated Or Distributed Without Express Written Permission			Project Name <b>WOODLINE CLOCK</b>	
Unless Otherwise Specified Dimensions are in Inches All Non-Standard Tolerances Are Specified In Affected Dimensions			Part Description Part # 42 - Pendulum Bob - Wood Turn To a Hollow Shell - Must Be Fairly Light Weight	
mke@woodline.com • 1-800-472-6950			Scale	Page #
3d Drawings by Gregg Zurek			DO NOT SCALE	42



# PART #41 - PENDULUM LOCK ASSEMBLY



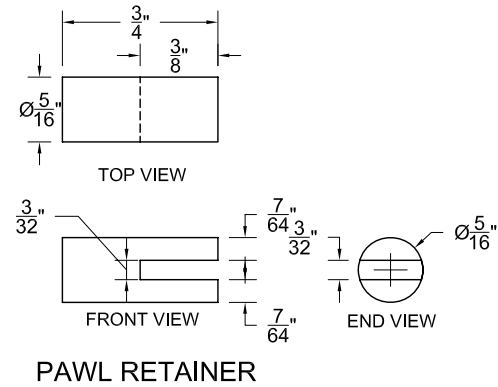
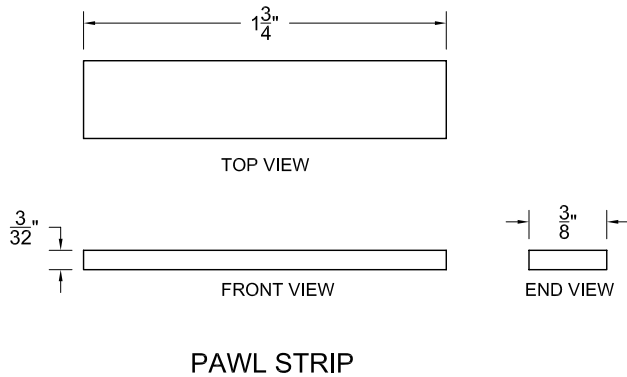
Pendulum Wedge



Pendulum Lock Bracket

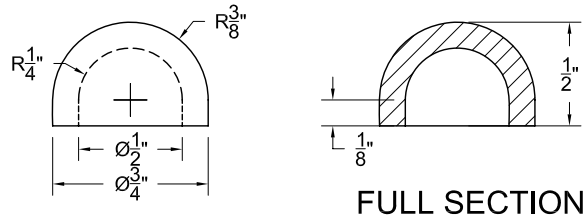
	Name	Revision	<b>WOODLINE USA</b>
Drawn By	Wayne S	01-002	
All Drawings Are Property of Woodline USA And Cannot Be Duplicated Or Distributed Without Express Written Permission			Project Name <b>WOODLINE CLOCK</b>
Unless Otherwise Specified Dimensions are in Inches All Non-Standard Tolerances Are Specified In Affected Dimensions			Part Description Part # 41 - Pendulum Lock Assm. - Includes Wedge and Adjustment Lock Bracket - Wood See Assembly Reference for Details on How these Parts Interact with the Pendulum Bob
mke@woodline.com - 1-800-472-6950			Scale <b>DO NOT SCALE</b>
3d Drawings by Gregg Zurek			Page # <b>41</b>

**PART #39 - PAWL STRIPS - 2 NEEDED**  
**PART # 40 - PAWL RETAINER DOWELS - 2 NEEDED**

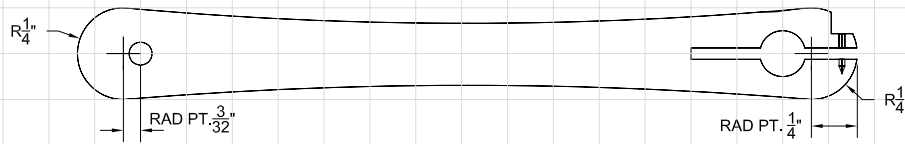


	Name	Revision	<b>WOODLINE USA</b>
Drawn By	Wayne S	01-002	
All Drawings Are Property of Woodline USA And Cannot Be Duplicated Or Distributed Without Express Written Permission			Project Name <b>WOODLINE CLOCK</b>
Unless Otherwise Specified Dimensions are in Inches All Non-Standard Tolerances Are Specified In Affected Dimensions			Part Description Part # 39 - Pawl Strips - Wood 3/32" Thick - Trim To Fit Rather as Assembly Part # 40 - Pawl Retainer Dowels - Wood Need 2 - 5/16" Diameter with 3/32" Slot 3/8" Deep
mke@woodline.com - 1-800-472-6950			Scale <b>DO NOT SCALE</b>
3d Drawings by Gregg Zurek			Page # <b>39-40</b>

# PART #37 - NUT COVERS



	Name	Revision	<b>WOODLINE USA</b>	
Drawn By	Wayne S	01-002		
All Drawings Are Property of Woodline USA And Cannot Be Duplicated Or Distributed Without Express Written Permission			Project Name WOODLINE CLOCK	
Unless Otherwise Specified Dimensions are in Inches All Non-Standard Tolerances Are Specified In Affected Dimensions			Part Description Part # 37 - Nut covers - Wood 8 pcs.	
mke@woodline.com - 1-800-472-6950			Scale	Page #
3d Drawings by Gregg Zurek			FULL SIZE	37

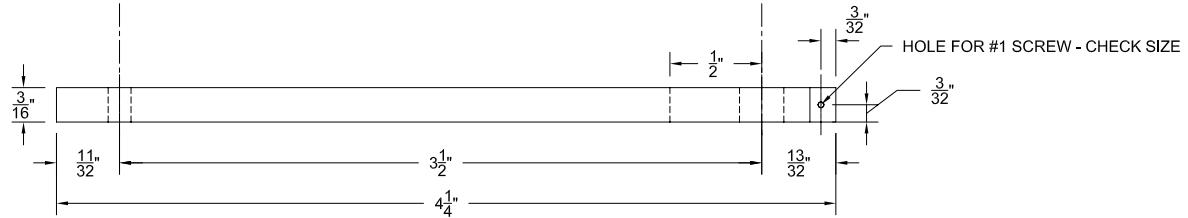


EACH SQUARE REPRESENTS 1/4" X 1/4"

PART #34 - CRUTCH



TOP VIEW

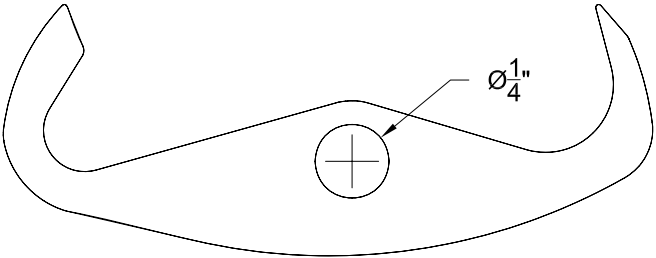


FRONT VIEW

Drawn By	Name	Revision	<b>WOODLINE USA</b>	
Wayne S	Wayne S	01-002		
All Drawings Are Property of Woodline USA And Cannot Be Duplicated Or Distributed Without Express Written Permission			Project Name <b>WOODLINE CLOCK</b>	
Unless Otherwise Specified Dimensions are in Inches All Non-Standard Tolerances Are Specified In Affected Dimensions			Part Description Part # 34 - Crutch - Wood 3/16" Thick - Tight Slip Fit onto escape lever arbor for beat adjust	
mke@woodline.com - 1-800-472-6950			Scale	Page #
3d Drawings by Gregg Zurek			FULL SIZE	30

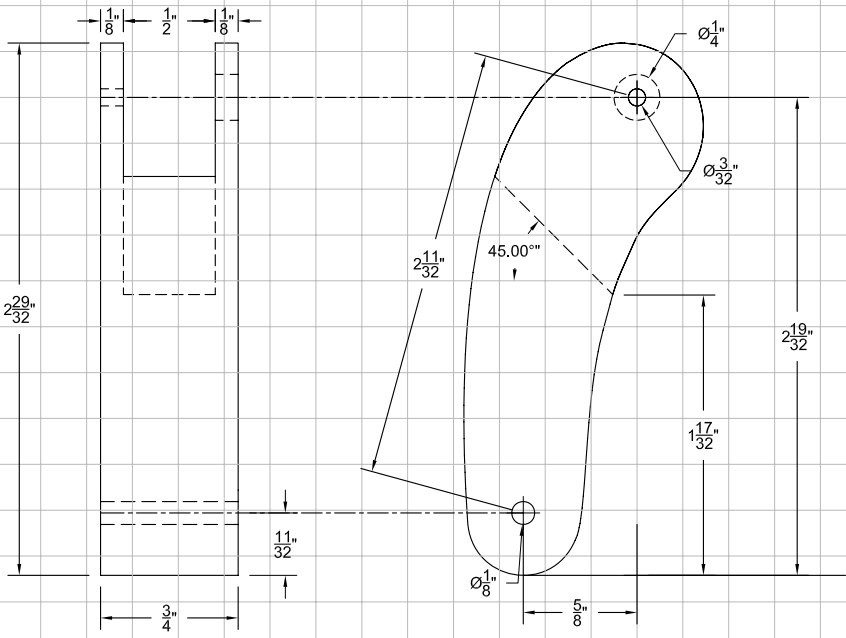
PART #29 - ESCAPEMENT LEVER

REFER TO TEMPLATE FOR GEAR TEETH AND SPOKES.



	Name	Revision	<b>WOODLINE USA</b>	
Drawn By	Wayne S	01-002		
All Drawings Are Property of Woodline USA And Cannot Be Duplicated Or Distributed Without Express Written Permission			Project Name WOODLINE CLOCK	
Unless Otherwise Specified Dimensions are in Inches All Non-Standard Tolerances Are Specified In Affected Dimensions			Part Description Part # 29 - Escapement Lever - Wood 3/8" Thick - Finish Very Smoothly On Pallet Edges	
mke@woodline.com - 1-800-472-6950			Scale	Page #
3d Drawings by Gregg Zurek			DO NOT SCALE	29

Part # 28 - Escapement Lever Bracket - Wood

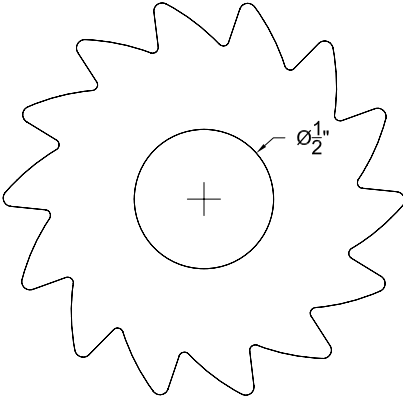


EACH SQUARE REPRESENTS 1/4" X 1/4"

Drawn By	Name	Revision	<b>WOODLINE USA</b>	
Wayne S	Wayne S	01-002		
All Drawings Are Property of Woodline USA And Cannot Be Duplicated Or Distributed Without Express Written Permission			Project Name WOODLINE CLOCK	
Unless Otherwise Specified Dimensions are in Inches All Non-Standard Tolerances Are Specified In Affected Dimensions			Part Description Part # 28 - Escapement Lever Bracket - Wood 3/4" Thick	
mke@woodline.com • 1-800-472-6950			Scale	Page #
3d Drawings by Gregg Zurek			DO NOT SCALE	28

# PART #24 - RATCHET

REFER TO TEMPLATE FOR  
GEAR TEETH AND SPOKES.

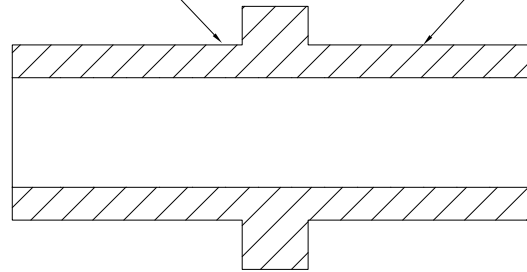


	Name	Revision	<b>WOODLINE USA</b>	
Drawn By	Wayne S	01-002		
All Drawings Are Property of Woodline USA And Cannot Be Duplicated Or Distributed Without Express Written Permission			Project Name	
			WOODLINE CLOCK	
Unless Otherwise Specified Dimensons are in Inches All Non-Standard Tolerances Are Specified In Affected Dimensions			Part Description	
			Part # 24 - Ratchet - Wood 3/8" Thick - 14 Tooth	
mke@woodline.com - 1-800-472-6950			Scale	Page #
3d Drawings by Gregg Zurek			DO NOT SCALE	24

# PART #23 - CANNON TUBE

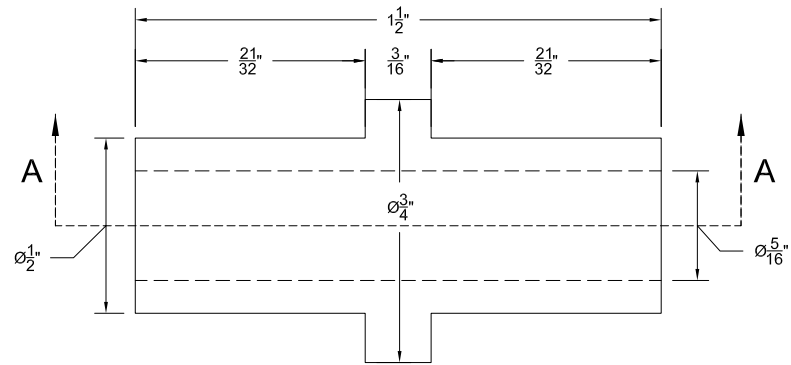
HOUR HAND MUST FIT SNUG BUT ROTATE WITH MILD FINGER PRESSURE

SNUG FIT IN 48 TOOTH DIAL TRAIN #10



TRIM LENGTH AFTER INSTALLED IN POSITION ON PART #10

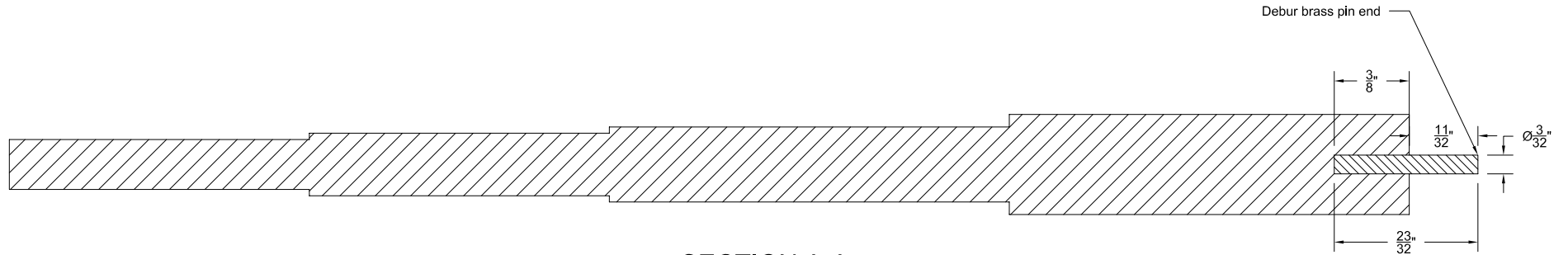
## SECTION A-A



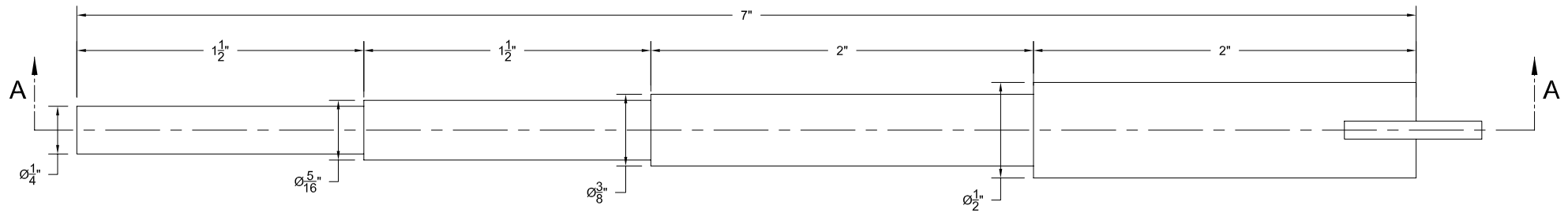
Name		Revision		<b>WOODLINE USA</b>	
Drawn By	Wayne S		01-002		
All Drawings Are Property of Woodline USA And Cannot Be Duplicated Or Distributed Without Express Written Permission				WOODLINE CLOCK	
Unless Otherwise Specified Dimensions are in Inches All Non-Standard Tolerances Are Specified In Affected Dimensions				Part Description	
mke@woodline.com • 1-800-472-6950				Part # 23 - Cannon Tube - Wood Part Is to be trimmed to fit at Installation	
3d Drawings by Gregg Zurek				Scale	
				DO NOT SCALE	
				Page #	
				23	



# PART #22 - CENTER ARBOR

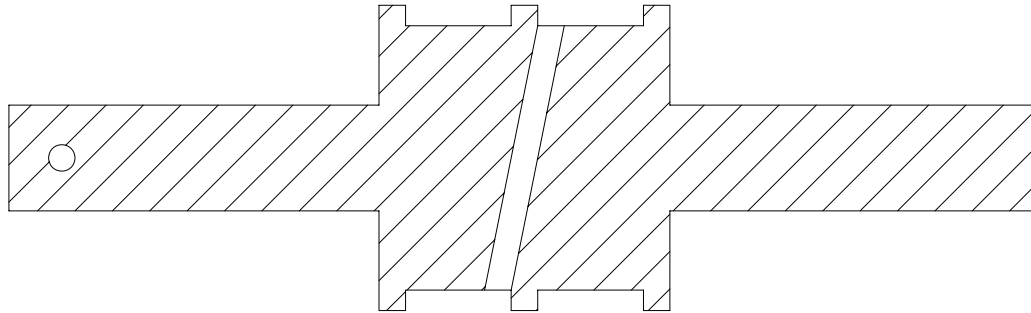


SECTION A-A

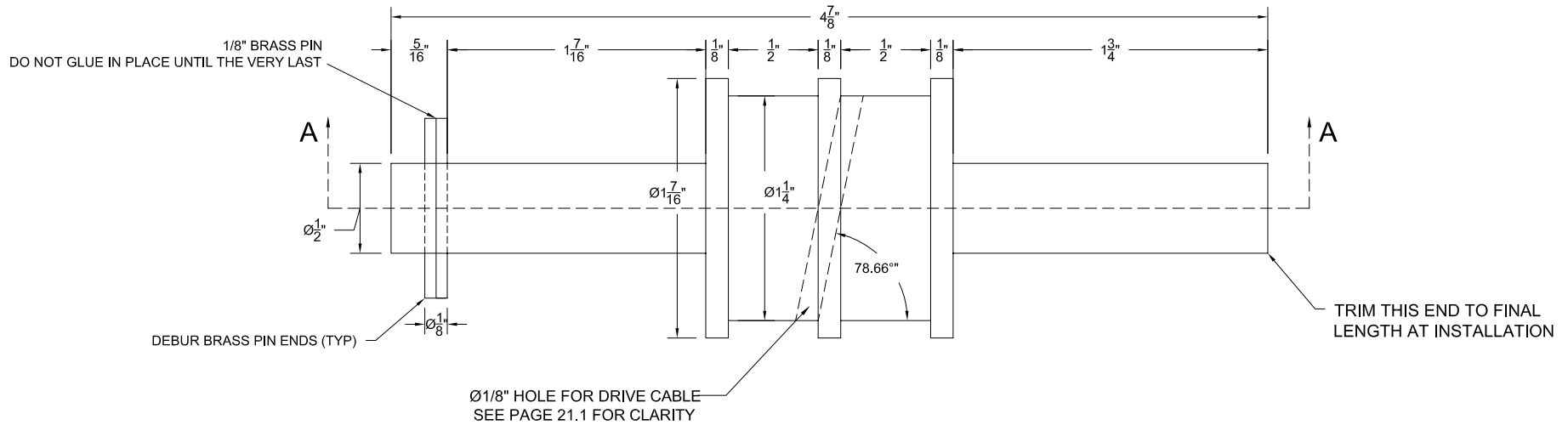


Name	Revision	WOODLINE USA	
Drawn By	Wayne S	01-002	
All Drawings Are Property of Woodline USA And Cannot Be Duplicated Or Distributed Without Express Written Permission		Project Name WOODLINE CLOCK	
Unless Otherwise Specified Dimensions are in Inches All Non-Standard Tolerances Are Specified In Affected Dimensions		Part Description Part # 22 - Center Arbor - Wood Size carefully to gears - Finalize length during assembly	
mke@woodline.com - 1-800-472-6950		Scale DO NOT SCALE	Page # 22
3d Drawings by Gregg Zurek			

# PART #21 - WEIGHT ARBOR

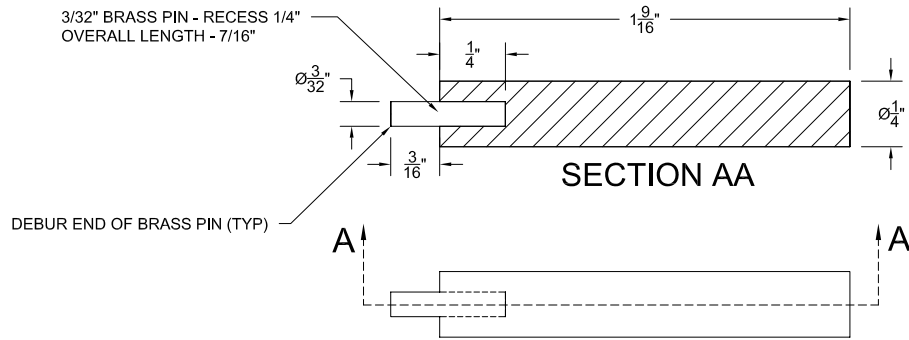


SECTION A-A



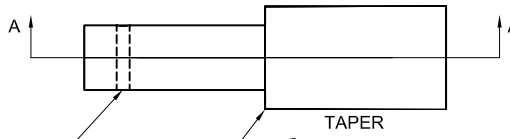
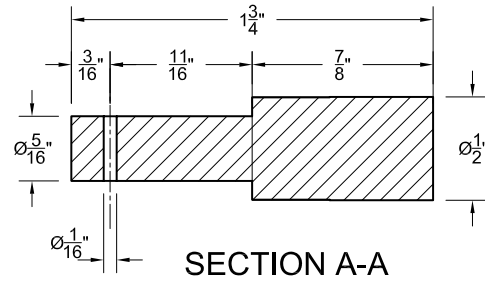
	Name	Revision	<b>WOODLINE USA</b>	
Drawn By	Wayne S	01-002		
All Drawings Are Property of Woodline USA And Cannot Be Duplicated Or Distributed Without Express Written Permission			Project Name <b>WOODLINE CLOCK</b>	
Unless Otherwise Specified Dimensions are in Inches All Non-Standard Tolerances Are Specified In Affected Dimensions			Part Description Part # 21 - Weight Arbor - Wood Can be built from solid wood or built up	
mke@woodline.com - 1-800-472-6950			Scale	Page #
3d Drawings by Gregg Zurek			DO NOT SCALE	21

# PART #20 - ESCAPEMENT LEVER ARBOR



	Name	Revision	<b>WOODLINE USA</b>	
Drawn By	Wayne S	01-002		
All Drawings Are Property of Woodline USA And Cannot Be Duplicated Or Distributed Without Express Written Permission			Project Name <b>WOODLINE CLOCK</b>	
Unless Otherwise Specified Dimensions are in Inches All Non-Standard Tolerances Are Specified In Affected Dimensions			Part Description Part # 20 - Escapement Lever Arbor - Wood Critical Dimensions - Must Rotate Freely Trim to length after installing	
mke@woodline.com - 1-800-472-6950			Scale	Page #
3d Drawings by Gregg Zurek			DO NOT SCALE	20

# PART #19 - DIAL TRAIN ARBOR



DRILL HOLE FOR PIN AFTER INSTALLING GEAR

Taper This End Slightly (0.0025)  
For Loose Fit On 40 Tooth Gear #12

	Name	Revision	<b>WOODLINE USA</b>	
Drawn By	Wayne S	01-002		
All Drawings Are Property of Woodline USA And Cannot Be Duplicated Or Distributed Without Express Written Permission			Project Name <b>WOODLINE CLOCK</b>	
Unless Otherwise Specified Dimensions are in Inches All Non-Standard Tolerances Are Specified In Affected Dimensions			Part Description Part # 19 - Dial Train Arbor - Wood	
mke@woodline.com - 1-800-472-6950			Scale	Page #
3d Drawings by Gregg Zurek			DO NOT SCALE	19