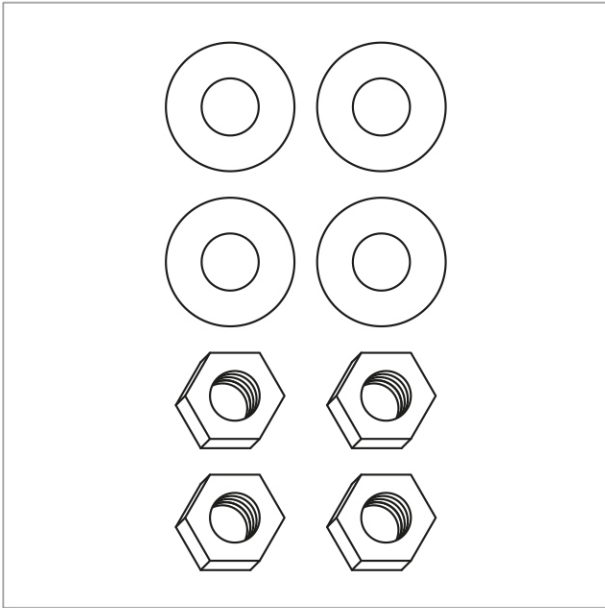


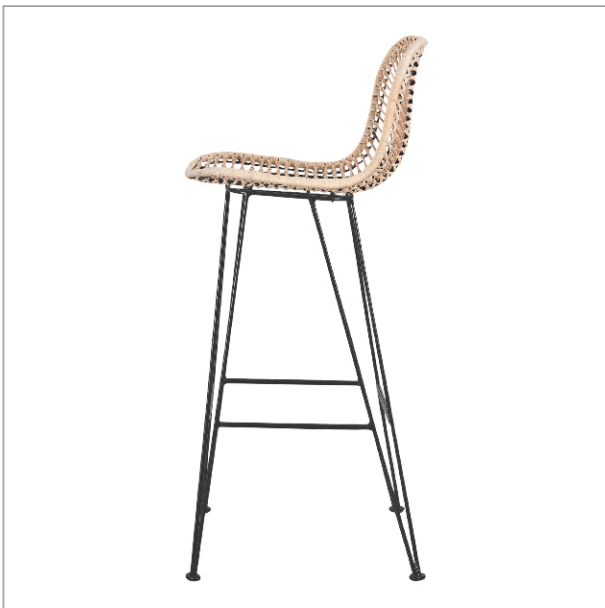
THE FAMILY
LOVE
TREE

Assembly Instructions

ZULU STOOLS



What you'll need:
Stool Top & Base
4 x Metal Washers
4 x Metal Nuts
A Cup of Tea (for post stool assembly...not supplied)



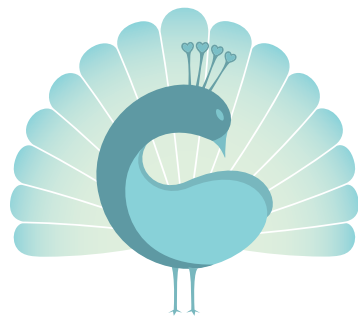
* The stools are designed so that the slightly straighter legs are at the front. This allows for a comfortable sitting possie in a slightly reclined position.



1 > Place the stool top upside-down on a smooth surface such as carpet or a towel.
Place the base (legs) of the stool in position on top of the chair top and line up the holes with the screws.



2 > Slip the washer onto each screw.



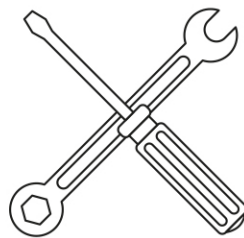
THE FAMILY
LOVE
TREE

Assembly Instructions

ZULU STOOLS



3 > Slip on each of the four nuts and tighten using your hands or a wrench. Ta da! Now you will be lift up to where you belong and can enjoy a cup of tea.



HELP

Call our warehouse for further assistance:

03 9568 1962
Mon/Wed/Fri