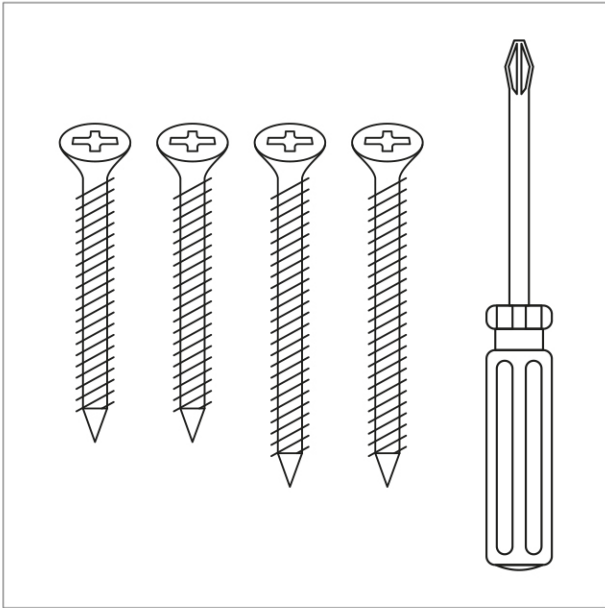


THE FAMILY
LOVE
TREE

Assembly Instructions

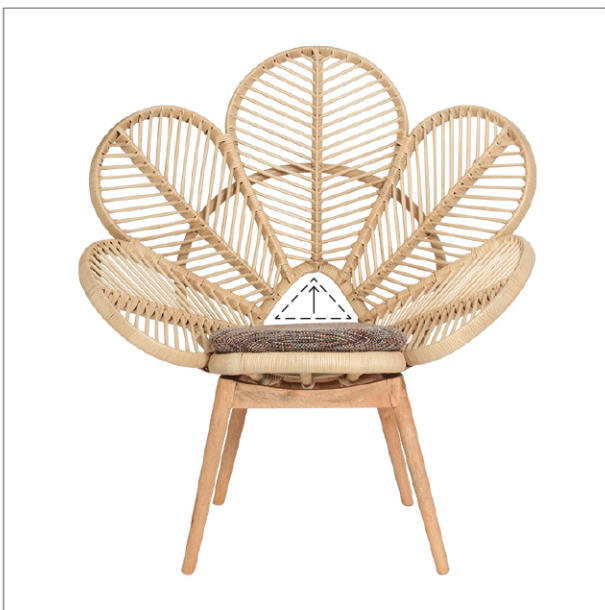
LOVE CHAIR



What you'll need:
Chair Top & Base
4 x Phillips Head Screws
Screw Driver or Drill (not supplied)



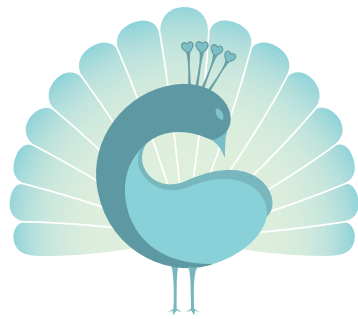
1 > Place the chair base on an even surface.



2 > Hold the chair top with the point of the triangle facing up.



3 > Place the top onto the base with the rattan circular brace slotting into the groove. It should be able to rest in this position.



THE FAMILY
LOVE
TREE

Assembly Instructions

LOVE CHAIR



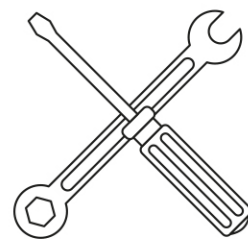
4 > You should be able to see four pre-drilled screw holes, two in the base and two at the back. The longer length screws go into the base, the shorter length screws go into the back.



5 > Using your hands to start with, rotate the screws into the holes until firm. Use a drill or screw driver to complete until screws are all the way in. It's suggested to tighten each screw by a few rotations before tightening one all the way.



6 > Ta da! Tie on your cushion and you are good to go!



HELP

Call our warehouse for further assistance:

03 9568 1962
Mon/Wed/Fri