

Model 3/Y Ultra Mini Screen Display Installation Manual

Note:

1.The installation instructions may differ slightly from the actual operation. If there are any differences, please follow the actual situation or contact us. 2.Warning: Please do not disassemble any part by yourself; any improper operation will not be covered by our warranty.



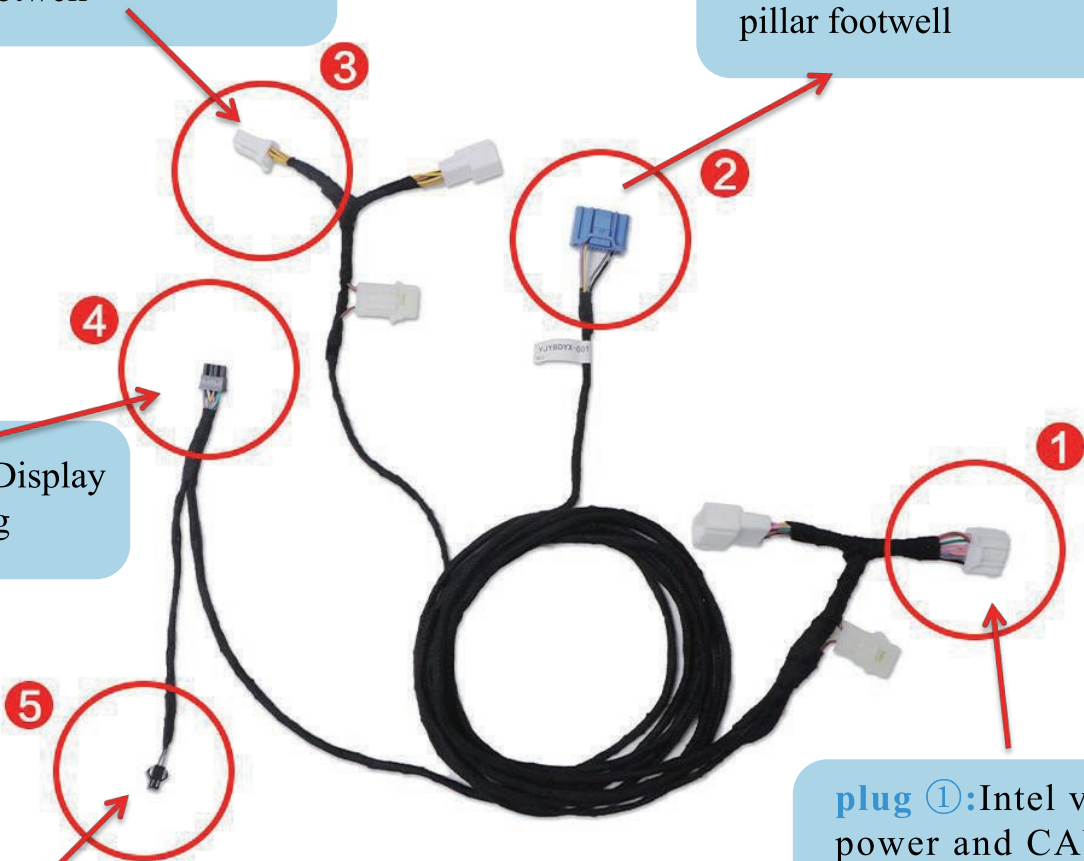
plug ③ : AMD version power plug-right door A pillar footwell

plug ② : AMD CANBUS adapter cable-right door A pillar footwell

plug ④ : Display power plug

plug ①: Intel version power and CANBUS plug-computer

plug ⑤: spare upgrade cable



Model 3/Y Ultra Mini Screen Display Installation Manual

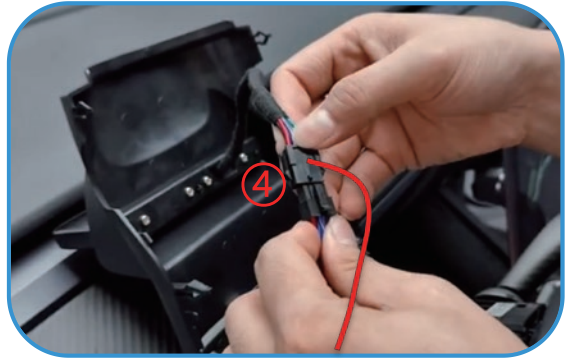
Intel Version



1. Slide the steering wheel to the bottom and then turn left to move the steering wheel to the the outermost position



2.Pry up the cover with a pryboard



3. Then pry the harness plug ④ from the upper cover plate of the driver's footwell and pull the harness to the upper part according to the instructions in the picture and plug it into the screen

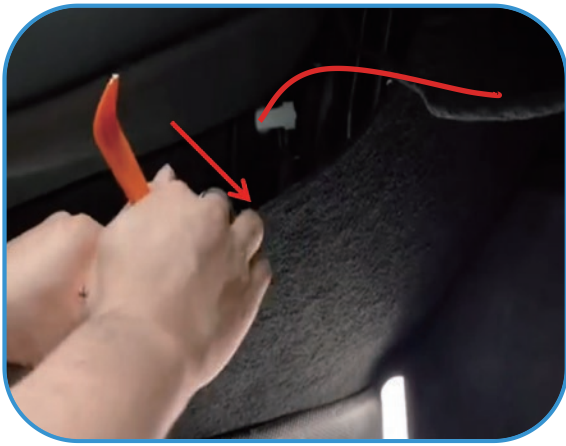


4.Install the cover

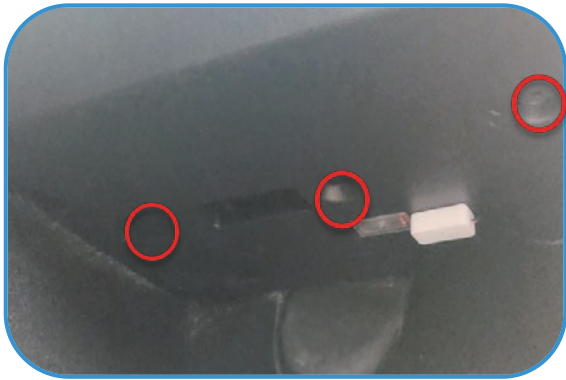


Harness wiring diagram

Model 3/Y Ultra Mini Screen Display Installation Manual



5. Pull harness ① to the side of passenger's footwell



6. Remove the upper cover of the passenger's footwell



7. Remove the side cover of the passenger's footwell



8. Find the second gray plug of the host above the passenger's footwell and connect it to plug ①

Model 3/Y Ultra Mini Screen Display Installation Manual

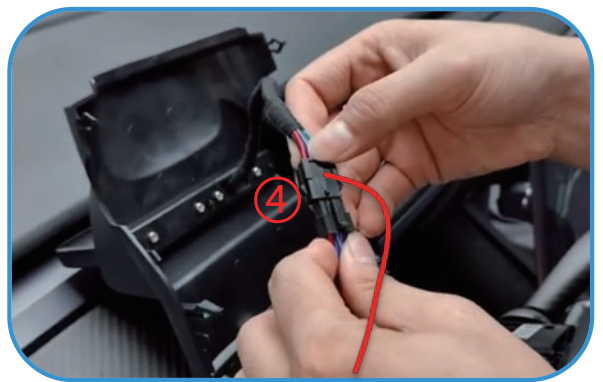
AMD Version



1. Slide the steering wheel to the bottom and then turn left to move the steering wheel to the the outermost position



2.Pry up the cover with a pry board



3.Then pry the harness plug ④ from the upper cover plate of the driver's footwell and pull the harness to the upper part according to the instructions in the picture and plug it into the screen



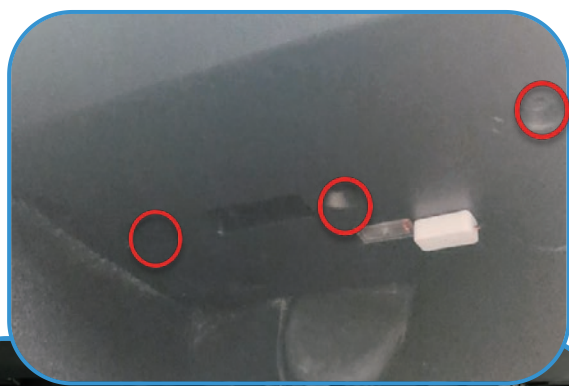
4.Install the cover

harness wiring diagram

Model 3/Y Ultra Mini Screen Display Installation Manual



5. Pull harness ②/③ to the side of passenger's footwell



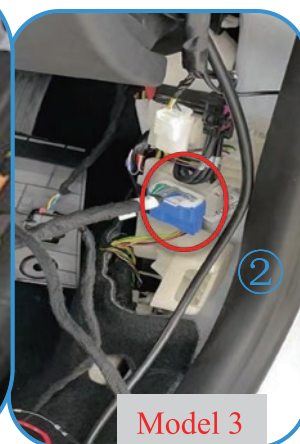
6. Remove the upper cover of the passenger's footwell



7. Remove the side cover of the passenger's footwell



8. Connect the plug ③ to the white plug under the A pillar of the front right seat



9. Connect the plug ② to the blue plug under the A pillar of the front right seat