

# Model Y Rim Protector

For 21" Uberturbine Wheel

Installation Manual



Before using this product, please read this manual carefully

## Package Include (Set For 4 Wheels)



### ① Front Wheel

- 10 Segments
- 2 Valve Segments



### ② Rear Wheel

- 10 Segments
- 2 Valve Segments

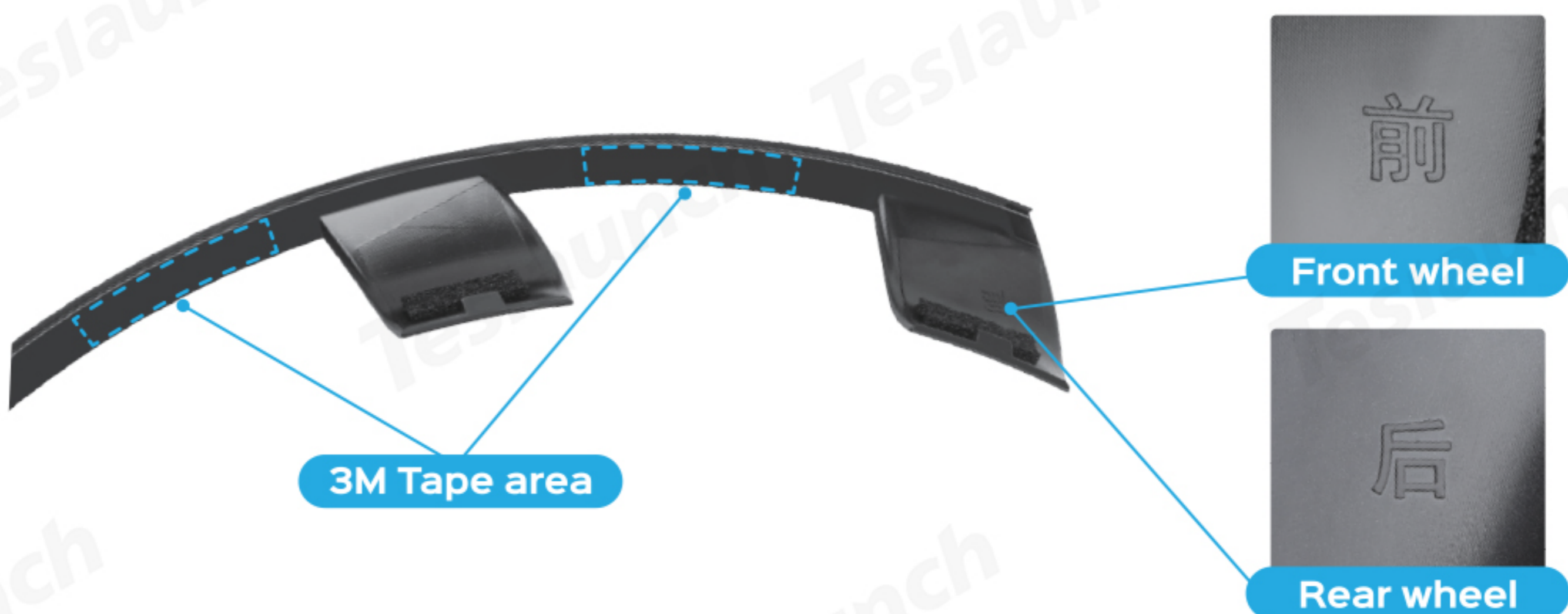


### ③ 3M Tape

## Instructions Before Use

### How to identify front and rear wheels, the 3M tape area?

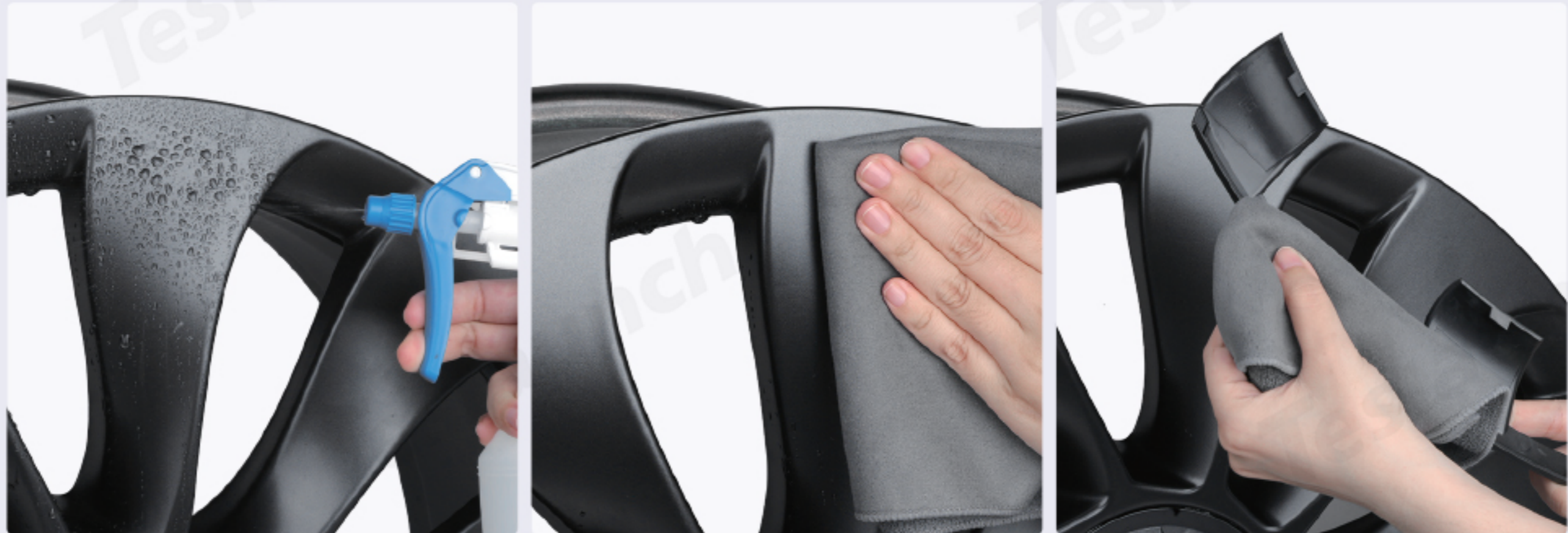
Before installation, please identify the rim protector's front and rear wheels, the 3M tape area to finish the correct installation.



## Installation Steps

- 1 Clean the wheel and hub protectors thoroughly.

**Note:** Be sure to dry the water on the wheel or it may affect the adhesion of the 3M tape.



- 2 Apply a small piece of 3M tape. Repeat this step for the rest of the parts.

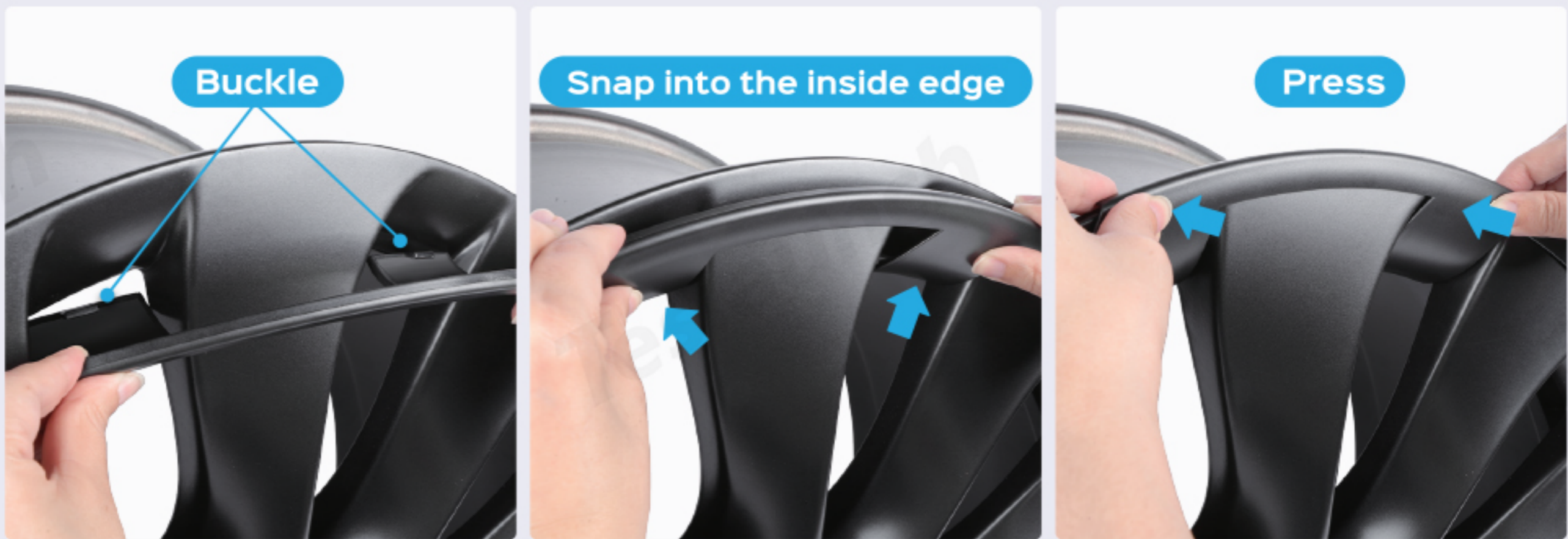
**Note:** Trim refer to the length shown, not exceed the tape area. If the length is too long, it may cause the 3M tape to protrude on the hub due to 3M tape's stretchiness.



- 3** Peel off all the red part backing of the 3M tape.



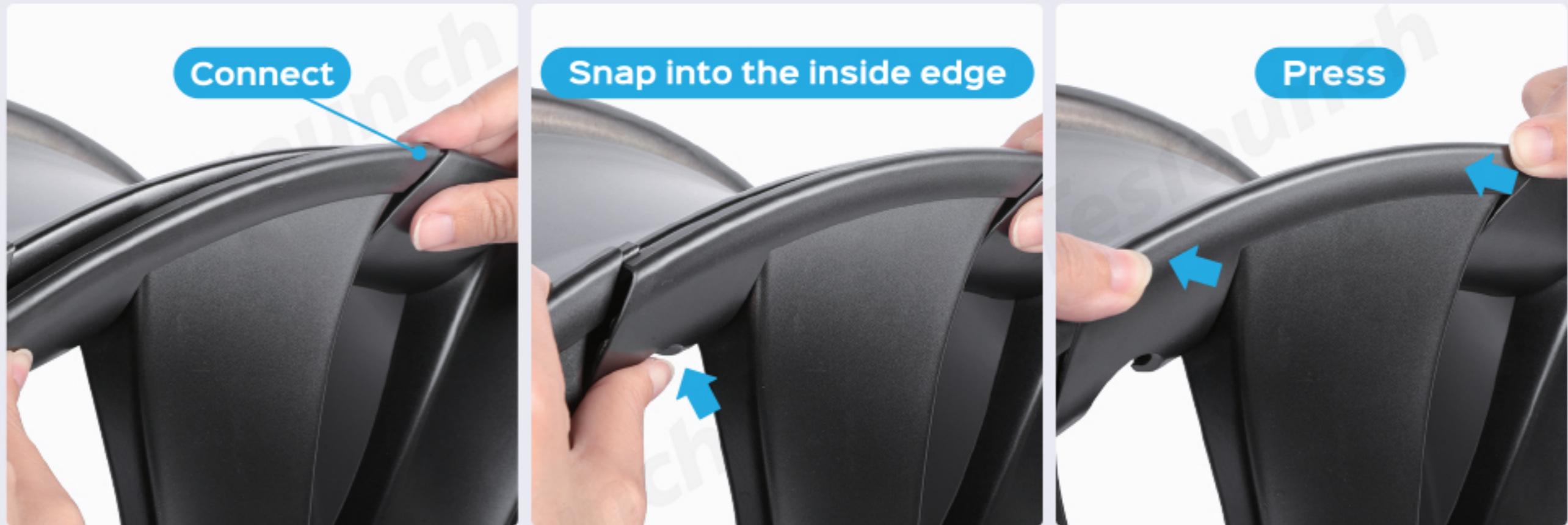
- 4** Insert the hub protector into the wheel hub, then press the edges inward to secure.



- 5** Align the next hub protector segment with the edge of the previous one and press it in. Repeat this step for all segments.



- 6 When installing the last valve segment, first connect its end to the previous segment, then insert it into the wheel hub and press firmly until it fits snugly.



- 7 Press hard again on the edge of the protector to ensure it more firmly, especially on the area with 3M tape.



- 8 Please check again if the hub protector fully covers the wheel rim edge, attempt to pry the hub protector outward with your hand, if it comes off, press firmly to ensure it is properly installed. (To avoid fall off during drive).



## Remove

Pull it out from the inside and lift it up to easily remove it.



## Installation Video

Scan the QR code to watch the rim protector's installation video.