

Electric Power Frunk Lift Kit

Tesla Model S (2016–2022)

Operation Instructions:

1. After installation, the first trial run, don't close the hood, buckle the lock latch with a screwdriver, then click the button to confirm whether unlock the original lock block (do the above steps twice, this step only tests whether unlock the original lock block). When can't unlock, you check whether the wiring and plugs are proper, don't close the hood.
2. After unlocking the lock latch, push the hood to the top, click the button, the hood is closed. (If the electric suction isn't sucked, press the hood to close by hand.)
3. After closing the hood, double-click the key or click the center console screen button, push the hood to the top, locate the gray cable to the ground with long press, then click the button to close the hood.

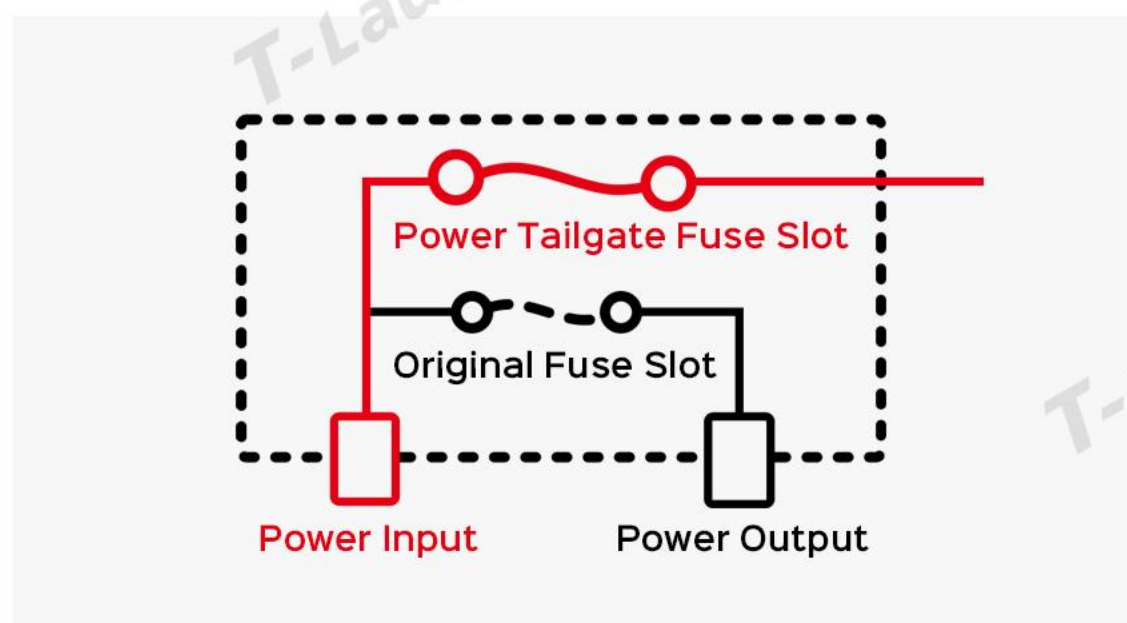
	Button	Key	Phone	Central Control
ON	Click	Double-click	Click	Click
OFF	Click	Double-click	Click	Click

Note: The installation guide may slightly differ from the actual operation. If discrepancies occur, please follow your vehicle's actual condition or contact us for support.

• Power Supply Adapter



• Power Supply Adapter Schematic



Note: The power input terminal must be connected to the live side of the vehicle's constant power fuse slot. If connected incorrectly, it may cause the original fuse to blow due to over current. Before installation, always use a test pen to confirm the correct input terminal. The current direction follows the red line shown in the schematic.

Packing List:

1. Lift Strut Assembly [2pcs]
2. Power Cable
3. Decoder
4. Frunk Sensor Cable
5. Dedicated Power Supply Adapter
6. Power Latch
7. 3M Tape [4pcs]
8. Cable Ties [10pcs]
9. User manual
10. Certificate of Conformity

Steps:

Step 1

Remove the frunk insulation pad as shown in the picture below.



Step 2

Remove the trim panel at the marking as shown in the picture below.



Step 3

Remove the trim panel as shown in the picture below.



Step 4

Remove the air vent as shown in the picture below.



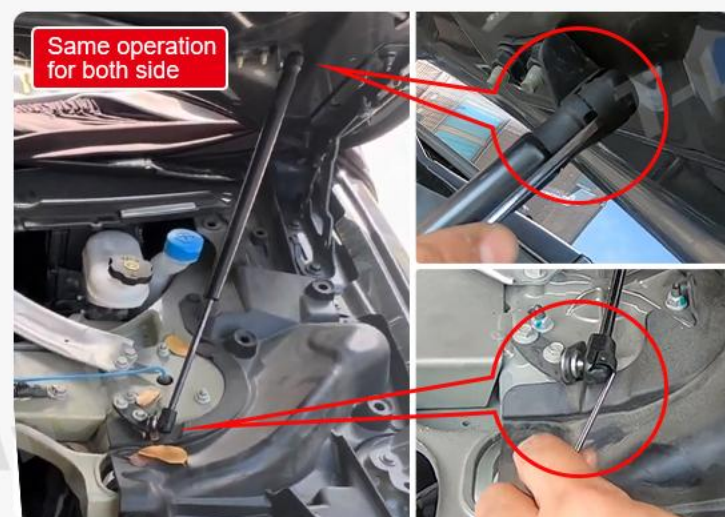
Step 5

Remove the screws at the marking to remove the frunk. (12 screws in total)



Step 6

Pry ball joint rear steel clip with a straight screwdriver, remove the strut.



Step 7

Install the left and right supplied struts onto the original vehicle brackets.



Step 8

Remove the two screws to take out the original frunk latch.



Step 9

Remove the spring from the original frunk latch.



Step 10

Hang the square hole of the pull-rod bracket onto the latch hook.



Step 11

Hang the supplied spring back onto the original spring position.



Step 12

Install the original latch back to the front trunk.

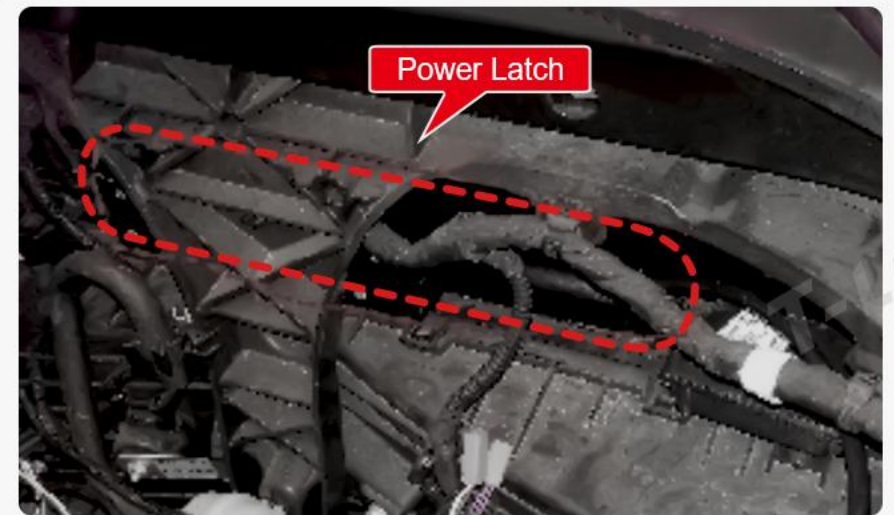


Step 13

The power latch must be mounted below the original frunk latch. (behind the front bumper)

Note:

Do not pull the emergency release cable when the latch is operating normally. The emergency cable is only for use when the latch fails to retract.

**Step 14 Wiring Location**

Connect the positive terminal to the frunk battery positive.

**Step 15 Wiring Location**

Connect the negative terminal to the frunk battery negative.

**Step 16 Wiring Location**

Status connector (no plug required) at the frunk latch location.

**Step 17 Wiring Location**

Motor connector (no plug required) at the lower right of the frunk.

**Step 18**

Secure the controller in this position.

**Step 19**

Wiring diagram.

